

B.M. S.G. 2061 ELEV. 719.998
 L.A. COUNTY B.M. S.G. 2061 TAG IN CONC. WALK
 AROUND MOUNTAIN 4' EAST OF WEST E.C. 170'
 EASTERLY AND 8' IN DISTANCE OF THE S.
 INTERSECTION OF BIRDA CANYON ROAD AND
 DIAMOND BAR BLVD.
 OTTERBEIN QUAD. 19 55

DOUBLE SCALE VERTICAL
 SAN DIMAS BLDG. DIST. NO. 10

PROFILE ALIGNMENT AND GRADE OF
 SANITARY SEWERS PAGE 1
 P.C. 7279

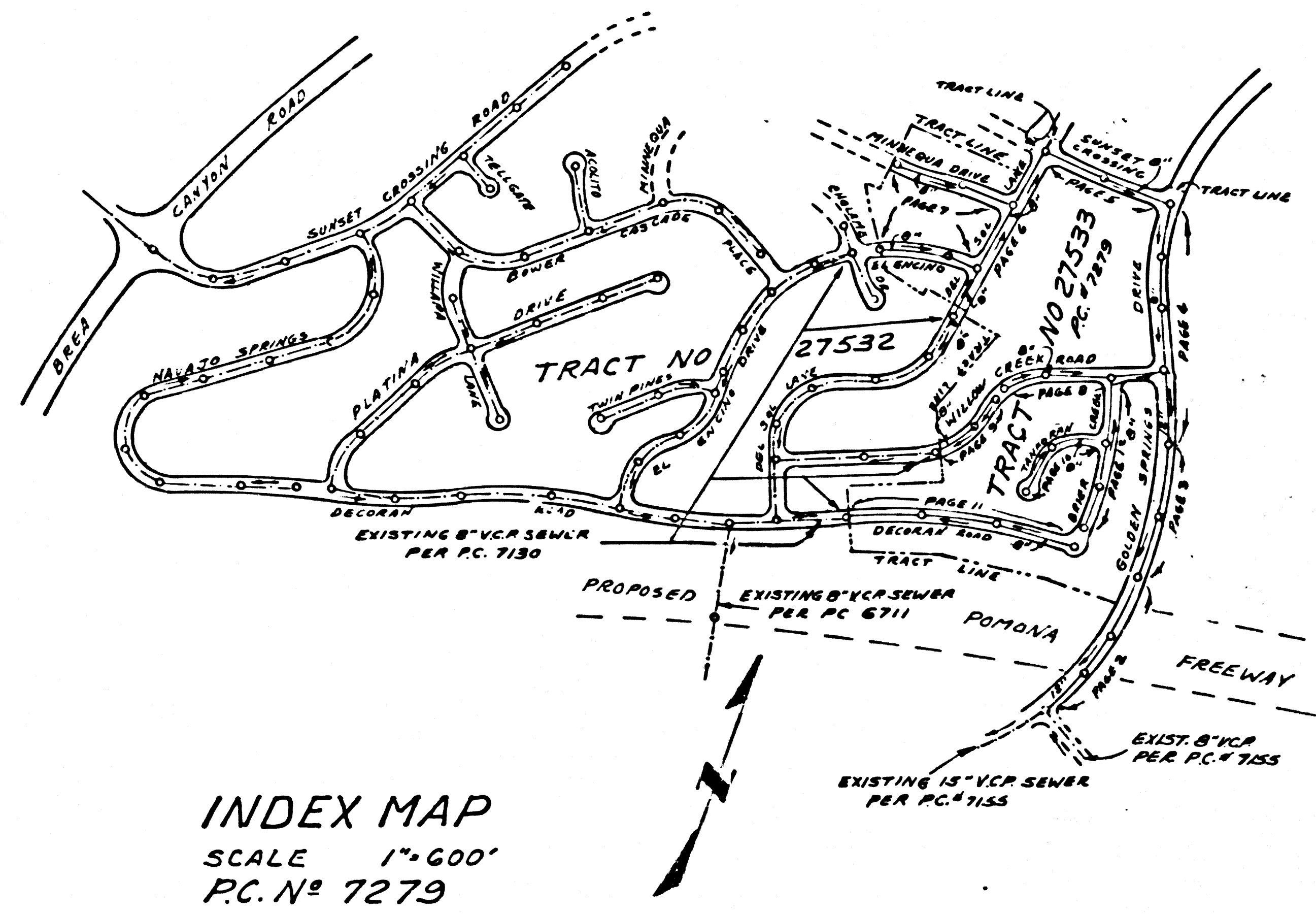
TRACT NO. 27533
 PRIVATE CONTRACT NO. 7279

37663

W.S. 53
 6 SHEETS, 12 PAGES
 SCALE: HORIZ. 1"=80'
 VERT. 1"=4'
 FEBRUARY, 1965

PREPARED IN THE OFFICES OF
 THE STATE ENGINEER, L.A. CO.
 515 SOUTH REYNOLDS AVENUE
 LOS ANGELES, CALIFORNIA
 PHONE BR 6-3141, BR 7-9510
 REG. C. E. NO. 12507

FOR LEGEND SEE PLAN NO. S-1



INDEX MAP
 SCALE 1"=600'
 P.C. No 7279

ISSUE NO HOUSE CONNECTION
 PERMITS UNTIL P.C.s 7155 AND
 7130 HAVE BEEN ACCEPTED
 BY THE COUNTY ENGINEER

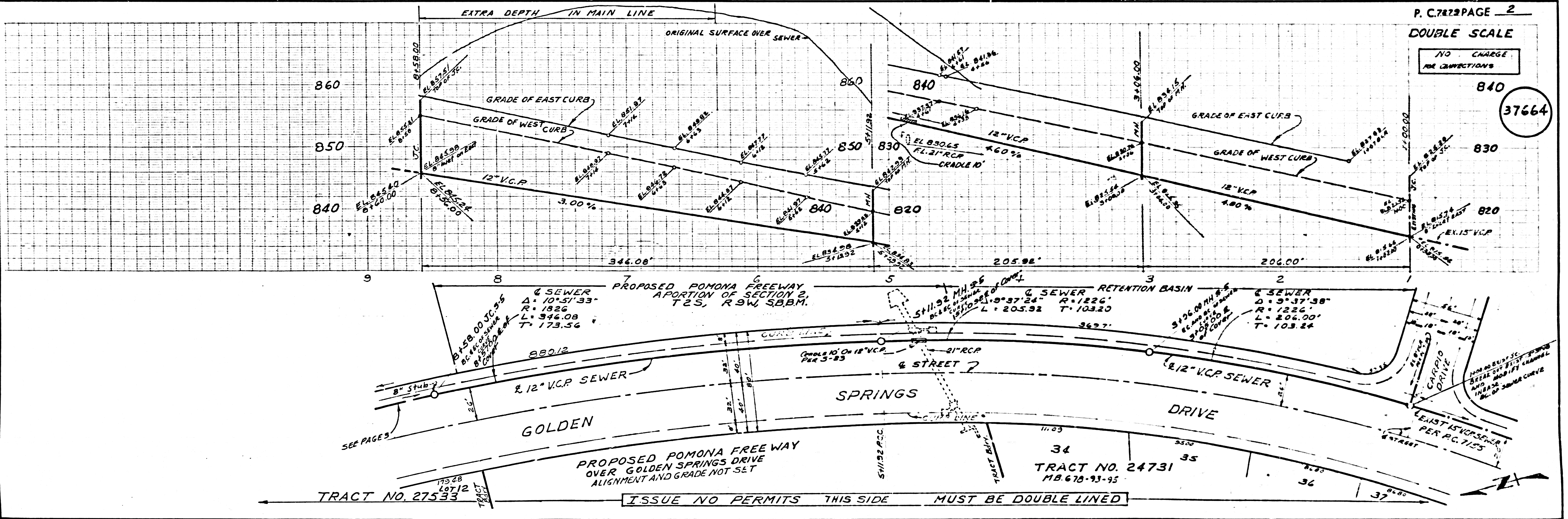
COLLECT CHARGES
 AS INDICATED
 J. D. Parkhurst 5-11-65

NO CONNECTIONS FOR THE DISPOSAL OF
 INDUSTRIAL WASTES SHALL BE MADE TO
 SEWERS SHOWN ON THESE DRAWINGS
 WITHOUT WRITTEN PERMISSION FROM THE
 CHIEF ENGINEER AND GENERAL MANAGER
 OF THE COUNTY SANITATION DISTRICTS.

NOTE:
 GRADES TO WHICH THIS IMPROVEMENT IS TO BE CONSTRUCTED ARE SHOWN ON PLANS AND PROFILES. GRADE POINTS FOR TOP OF CURBS, CENTER LINE OF STREETS, OR CENTER LINE OF ALLEYS ARE SHOWN BY CIRCLES ON PROFILES AT ALL POINTS BETWEEN DESIGNATED POINTS. THE GRADE SHALL BE ESTABLISHED SO AS TO CONFORM TO A STRAIGHT LINE BETWEEN SAID DESIGNATED POINTS. ELEVATIONS ARE IN FEET ABOVE U.S.C. & G.S. SEA LEVEL DATUM OF 1929. THIS DRAWING AND THE DATA HEREON ARE HEREBY MADE A PART OF THE SPECIFICATIONS. WORK SHALL BE CONSTRUCTED ACCORDING TO STANDARD SPECIFICATIONS DATED JULY 26, 1964, ON FILE IN THE OFFICE OF THE COUNTY ENGINEER AND SHALL BE PROSECUTED ONLY IN THE PRESENCE OF THE COUNTY ENGINEER. WORK CAN BE STARTED. THE CONTRACTOR MUST OBTAIN A PERMIT TO EXCAVATE IN COUNTY STREETS FROM THE L.A. COUNTY ROAD DEPT., DISTRICT OFFICE NO. 1 AND PAY A FEE TO THE COUNTY ENGINEER, ROOM 308, COUNTY ENGINEERING BUILDING, 515 WEST SECOND STREET, LOS ANGELES, CALIFORNIA. REGIONAL OFFICE, SUPPLEMENT TO COVER THE COST OF CONSTRUCTION INSPECTION AND RECORD PLANS. APPROVAL OF THIS PLAN BY THE COUNTY OF LOS ANGELES DOES NOT CONSTITUTE A REPRESENTATION AS TO THE ACCURACY OF THE LOCATION OF OR THE EXISTENCE OR NON-EXISTENCE OF ANY UNDERGROUND UTILITY PIPE, OR STRUCTURE WITHIN THE LIMITS OF THE PROJECT. THIS NOTE APPLIES TO ALL PAGES. IF WORK IS TO BE DONE IN A STATE HIGHWAY, A PERMIT MUST BE OBTAINED FROM THE STATE OF CALIFORNIA, DIVISION OF HIGHWAYS, THE SOUTH SPRING STREET, LOS ANGELES, CALIFORNIA.

COUNTY OF LOS ANGELES, CALIFORNIA
 JOHN A. LAMBE, COUNTY ENGINEER J. D. PARKHURST, CHIEF ENGINEER
 CO. SAN DIST. NO. 10
 APPROVED BY *[Signature]* APPROVED BY *[Signature]*
 ASSISTANT SANITATION ENGINEER OFFICE ENGINEER
 SUBMITTED BY *[Signature]* W. R. RAYL 5-11-65
 SAN DIMAS REGIONAL ENGINEER
 CHECKED BY *[Signature]* 5-11-65
 REG. C. E. NO. 16623

J.N. 0365.13

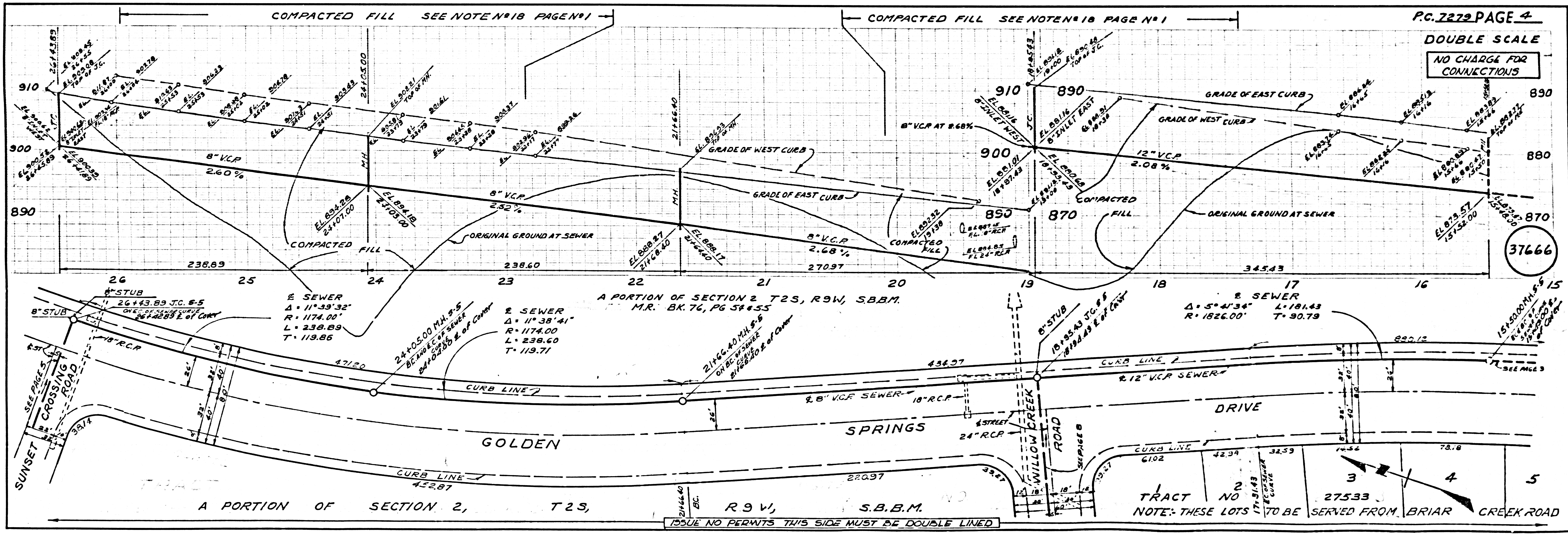
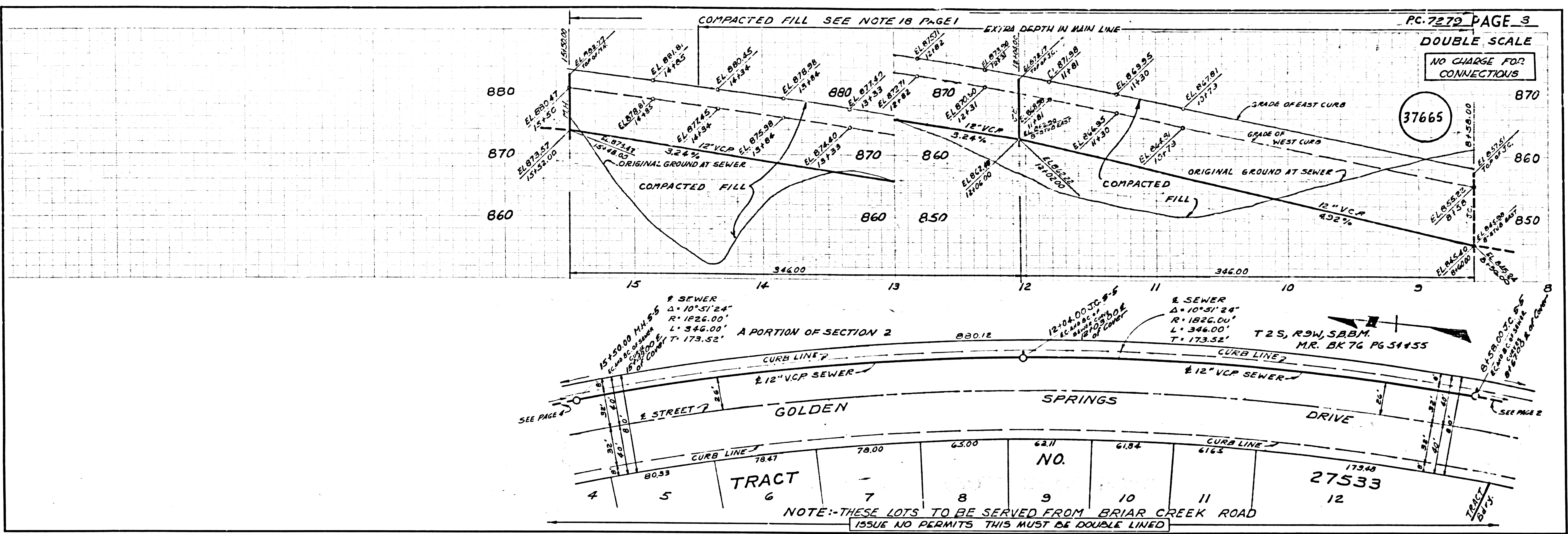


P. C. 7279 PAGE 2
 DOUBLE SCALE

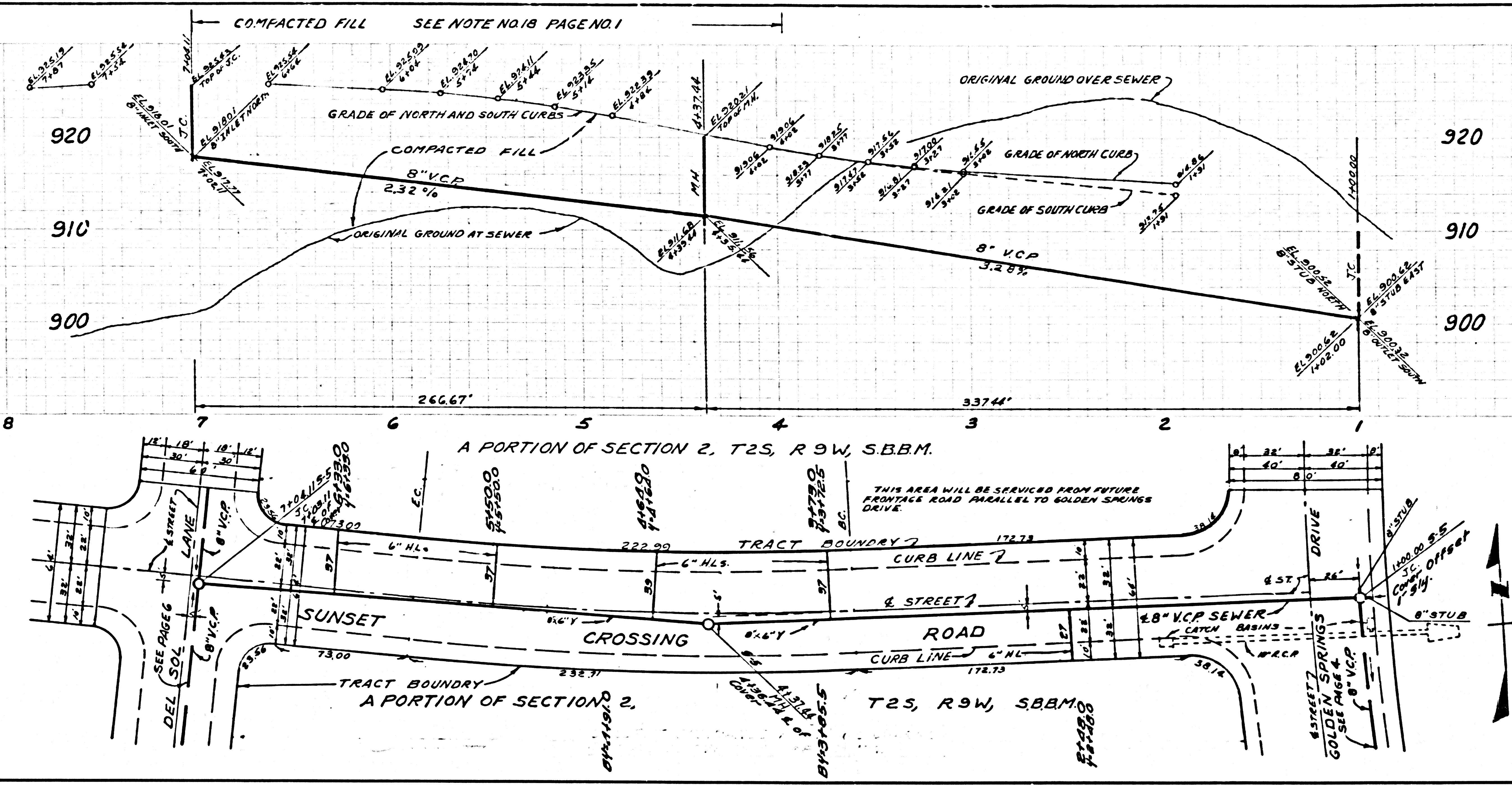
NO CHARGE
 FOR CONNECTIONS

37664

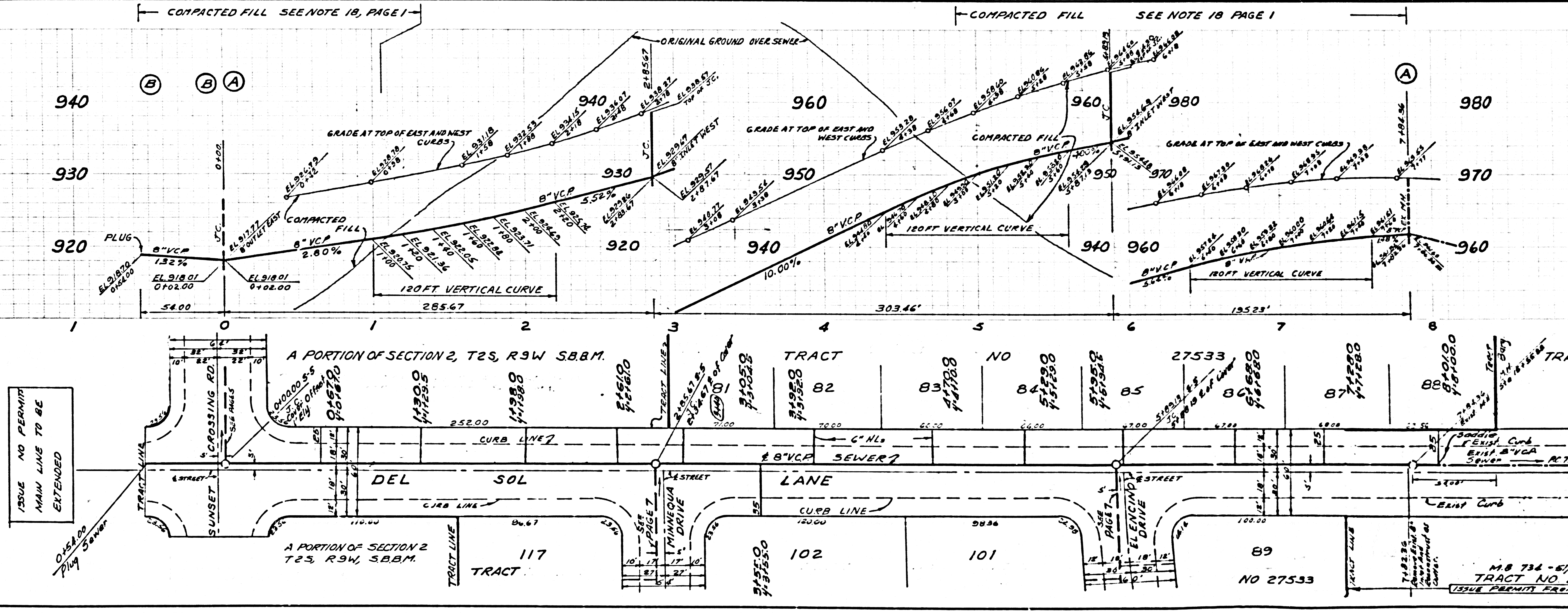
ISSUE NO PERMITS THIS SIDE MUST BE DOUBLE LINED



37667



37668



ISSUE NO PERMIT MAIN LINE TO BE EXTENDED

