

B.M. 54.926 ELEV. 1302.166  
 R.O.B.M. 710 IN N.W. COR. CORNER BASE OF  
 S.R.R.D. SEMAPHORE #1457-2 IN SW COR. OF  
 SALDADO CTR. RD. 2 1000' 4" W. OF POINT A  
 31.74' N. 87.1' W. OF BOUNDARY CORNER  
 NEWHALL QUAD. 19.58

REVISION: 6-15-65  
 PAGE 6-A MOVE UPPER M.H. FROM  
 14+83.24 TO 13+75.00.  
 CHANGE S.W.ER GRADE TO 0.72%  
 PAGES 6-2 & 7, REVISE PIPE SIZE (FROM  
 8" TO 12") S.W.ER GRADES & STATIONS  
 APPROVED: *[Signature]*  
 OFFICE OF COUNTY ENGINEER  
 APPROVED: *[Signature]*  
 CO. SAN. DIST. NO. 26

NEWHALL BLDG. DIST. NO. 82

PROFILE ALIGNMENT AND GRADE OF  
 SANITARY SEWERS PAGE 1  
 CONSTRUCTED IN

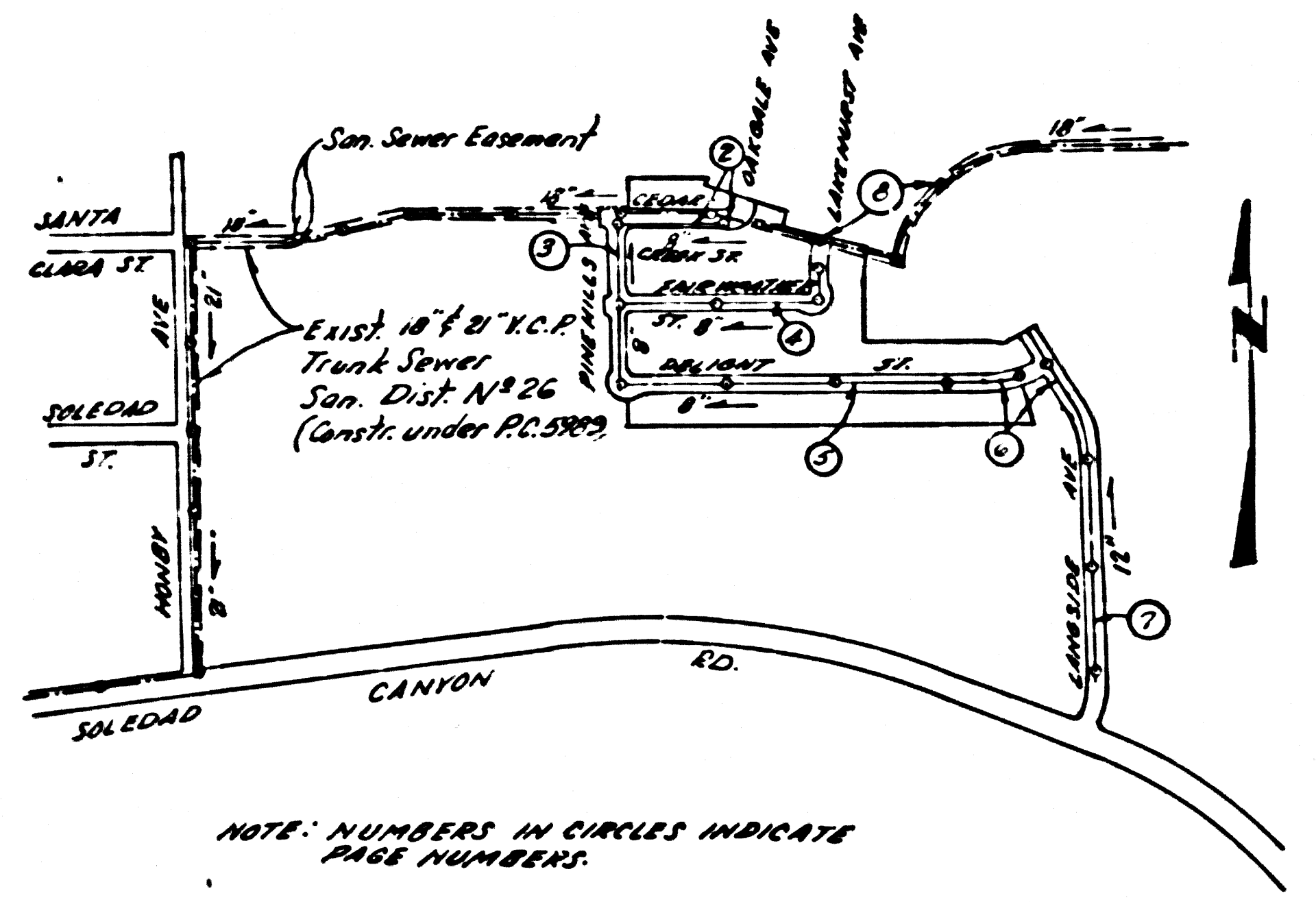
TRACT NO. 30317  
 PRIVATE CONTRACT NO. 7283

W.S. 62  
 SHEETS: 8 PAGES

SCALE: VERT. 1"=4'  
 HORIZ. 1"=40'  
 JANUARY, 1965

PREPARED IN THE OFFICES OF  
 MCINTIRE & QUIROS INC.  
 670 INDUSTRIAL PARK, BAY  
 PREPARED BY: *[Signature]*  
 REG. C. E. NO. 12297

37404



NOTE: NUMBERS IN CIRCLES INDICATE  
 PAGE NUMBERS.

INDEX MAP  
 TRACT NO. 30317  
 PC. 7283  
 Scale: 1"=400'

Any connection to the sewer system of County Sanitation District, provided directly or indirectly by the sewer shown on these plans, shall be considered a temporary connection until all are completed and is annexed to said district, at which time the connection shall become permanent. If for any reason the annexation to the district of any area sewered hereunder is not completed, the property not in the district will be required to disconnect unless a contract is entered into with the district providing for the disposal of sewage from the area.

- NOTES:
1. PROVIDE STAKES ON THE PROPERTY LINE OR PROPERTY LINES PRODUCED AT RIGHT ANGLES TO THE SEWER LINE AT THE CENTER LINE OF EACH MANHOLE.
  2. THE PRIVATE ENGINEER SHALL SURVEY OR LAY OUT ANY PORTION OF THE WORK.
  3. THE PRIVATE ENGINEER SHALL FURNISH THE COUNTY ENGINEER WITH GRAD SHIFTS AND STATIONING FOR ALL HOUSE LATERALS AND BRANCHES AND SHALL PROVIDE STAKES FOR THEM AT THEIR PROPER LOCATIONS WITH STATIONING PLAINLY MARKED. ALL HOUSE LATERALS SHALL BE CONSTRUCTED IN A STRAIGHT ALIGNMENT AT RIGHT ANGLES FROM THE MAIN LINE SEWER EXCEPT AS SHOWN ON THE PLANS. HOUSE LATERALS FROM CHIMNEYS SHALL NOT HAVE AN ANGLE OF LESS THAN 45° WITH THE MAIN LINE SEWER. ANY CHANGE IN ALIGNMENT SHALL BE REQUESTED IN WRITING BY THE PRIVATE ENGINEER.
  4. THE PRIVATE ENGINEER SHALL JUMP THE HOUSE LATERAL DEPTH AT THE PROPERTY LINE BELOW THE TOP OF CURB ELEVATION FOR EACH HOUSE LATERAL ON THE GRADE SHEET.
  5. NO REVISIONS SHALL BE MADE IN THESE PLANS WITHOUT THE APPROVAL OF THE COUNTY ENGINEER.
  6. THE CONTRACTOR SHALL NOTIFY THE CONSTRUCTION DIVISION BY TELEPHONE, MADISON 9-4747, EXT. 8133, AT LEAST TWENTY-FOUR HOURS BEFORE STARTING ANY WORK UNDER THIS CONTRACT.
  7. MANHOLES SHALL BE 20" SEWER STRUCTURES PER S-3 PRECAST CONCRETE MANHOLES PER S-5 OR S-6 MAY BE USED AS AN ALTERNATE IN LOCATIONS APPROVED BY THE COUNTY ENGINEER.
  8. USE STANDARD MANHOLE FRAMES AND COVERS, S-18, EXCEPT AS NOTED.
  9. MANHOLE TOPS IN UNIMPROVED RIGHTS-OF-WAY TO BE SIX INCHES ABOVE FINISHED GRADE.
  10. USE EXTRA STRENGTH PIPE. ALL PIPE IS STANDARD DEPTH EXCEPT AS NOTED.
  11. USE MECHANICAL COMPRESSION JOINTS FOR ALL V.C.P. JOINTS PER SPECS., SECS. 36, 48, & 49.
  12. IF A POWER POLE IS WITHIN THREE FEET OF THE SEWER, THE SEWER SHALL BE ENCASED, PER S-23 TWO FEET ON EITHER SIDE FROM THE POINT OF INTERFERENCE.
  13. IF DURING THE COURSE OF CONSTRUCTION IT IS DETERMINED THAT THERE IS LESS THAN FOUR FEET OF COVER OVER THE TOP OF A MAIN LINE OR HOUSE LATERAL V.C.P. SEWER WHICH IS NOT INDICATED ON THE PLANS, THE PIPE SHALL BE ENCASED PER S-23 UNLESS OTHERWISE APPROVED BY THE COUNTY ENGINEER.
  14. HOUSE LATERALS TO BE CONSTRUCTED WITH INVERTS AT PROPERTY LINE... FEET BELOW CURB GRADE EXCEPT AS NOTED.
  15. SURFACE ALL TRENCHES WITHIN PAVED AREAS TO MEET L.A. COUNTY ROAD DEPT. OR CALIFORNIA STATE HIGHWAY REQUIREMENTS IN ACCORDANCE WITH PERMITS.
  16. FOR ALLOWABLE LEAKAGE TEST USE FORMULA NO. 1, SPECS., SEC. 54.
  17. ALL STATE AND LOCAL TRENCH SAFETY ORDERS WILL BE RIGIDLY ENFORCED.

NO CONNECTIONS FOR THE DISPOSAL OF INDUSTRIAL WASTES SHALL BE MADE TO SEWERS SHOWN ON THESE DRAWINGS WITHOUT WRITTEN PERMISSION FROM THE CHIEF ENGINEER AND GENERAL MANAGER OF THE COUNTY SANITATION DISTRICTS.

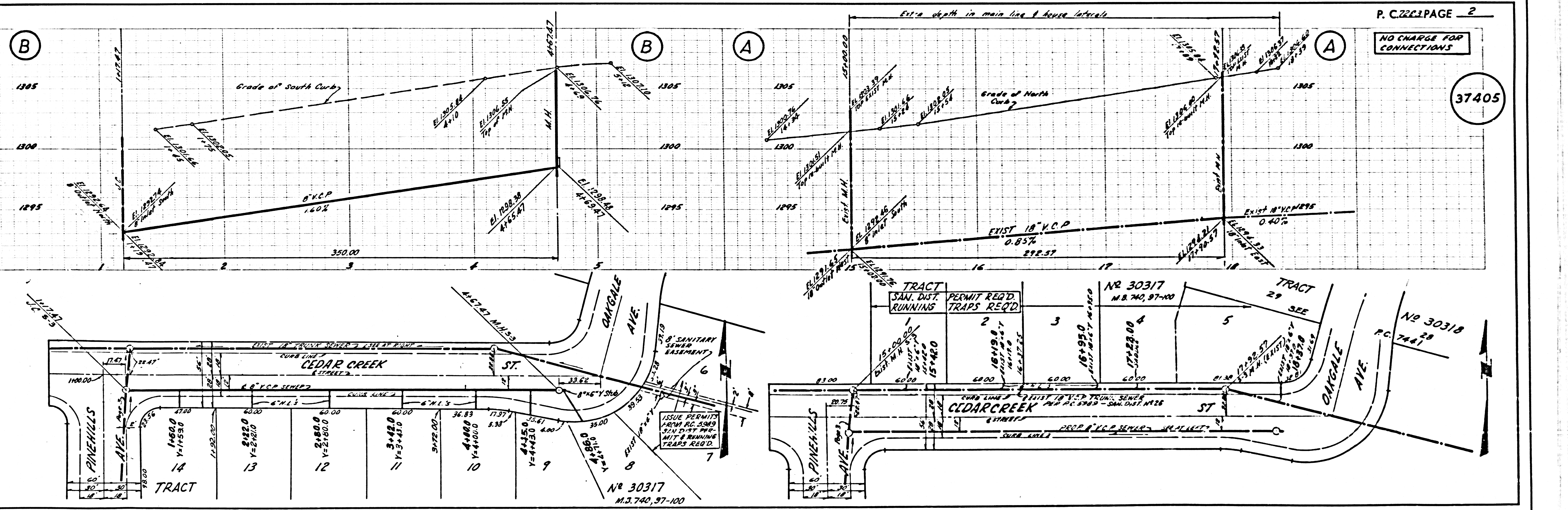
BEFORE BREAKING INTO ANY EXISTING STRUCTURE AND BEFORE FINAL ACCEPTANCE OF THIS WORK, COUNTY SANITATION DISTRICT (DU 4-1281) SHALL BE NOTIFIED IN ORDER THAT REQUIRED INSPECTION CAN BE MADE.

COLLECT CHARGES AS INDICATED  
*[Signature]*

NOTE:  
 GRADES TO WHICH THE IMPROVEMENTS ARE TO BE CONSTRUCTED ARE SHOWN ON PLANS AND PROFILES. GRADE POINTS FOR TOP OF CURB, CENTER LINE OF STREETS, OR CENTER LINE OF ALLEYS ARE SHOWN BY CIRCLES ON PROFILES. AT ALL POINTS BETWEEN DESIGNATED POINTS THE GRADE SHALL BE ESTABLISHED SO AS TO CORRESPOND TO A STRAIGHT LINE DRAWN BETWEEN SAID DESIGNATED POINTS. ELEVATIONS ARE IN FEET ABOVE U.S.C. & G.S. SEA LEVEL, DATUM OF 1929.  
 THIS DRAWING AND THE DATA HEREON ARE HEREBY MADE A PART OF THE SPECIFICATIONS.  
 BEFORE WORK CAN BE STARTED, THE CONTRACTOR MUST OBTAIN A PERMIT TO EXCAVATE IN COUNTY STREETS FROM THE L.A. COUNTY ROAD DEPT., DISTRICT OFFICE NO. 2, 475 S. GARDEN ST., LOS ANGELES, CALIF. AND A PERMIT TO THE COUNTY ENGINEER, ROOM 300, COUNTY ENGINEERING BUILDING, 100 WEST SECOND STREET, LOS ANGELES, CALIF. AND A PERMIT TO THE COUNTY ENGINEER, REGIONAL OFFICE, SUFFICIENT TO COVER THE COST OF CONSTRUCTION INSPECTION AND RECORD PLANS.  
 APPROVAL OF THIS PLAN BY THE COUNTY OF LOS ANGELES DOES NOT CONSTITUTE A REPRESENTATION AS TO THE ACCURACY OF THE LOCATION OF OR THE EXISTENCE OF ANY UNDERGROUND UTILITY PIPE, OR STRUCTURE WITHIN THE LIMITS OF THIS PROJECT. THIS NOTE APPLIES TO ALL PAGES.  
 IF WORK IS TO BE DONE IN A STATE HIGHWAY, A PERMIT MUST BE OBTAINED FROM THE STATE OF CALIFORNIA, DIVISION OF HIGHWAYS, 220 SOUTH SPRING STREET, LOS ANGELES, CALIFORNIA.

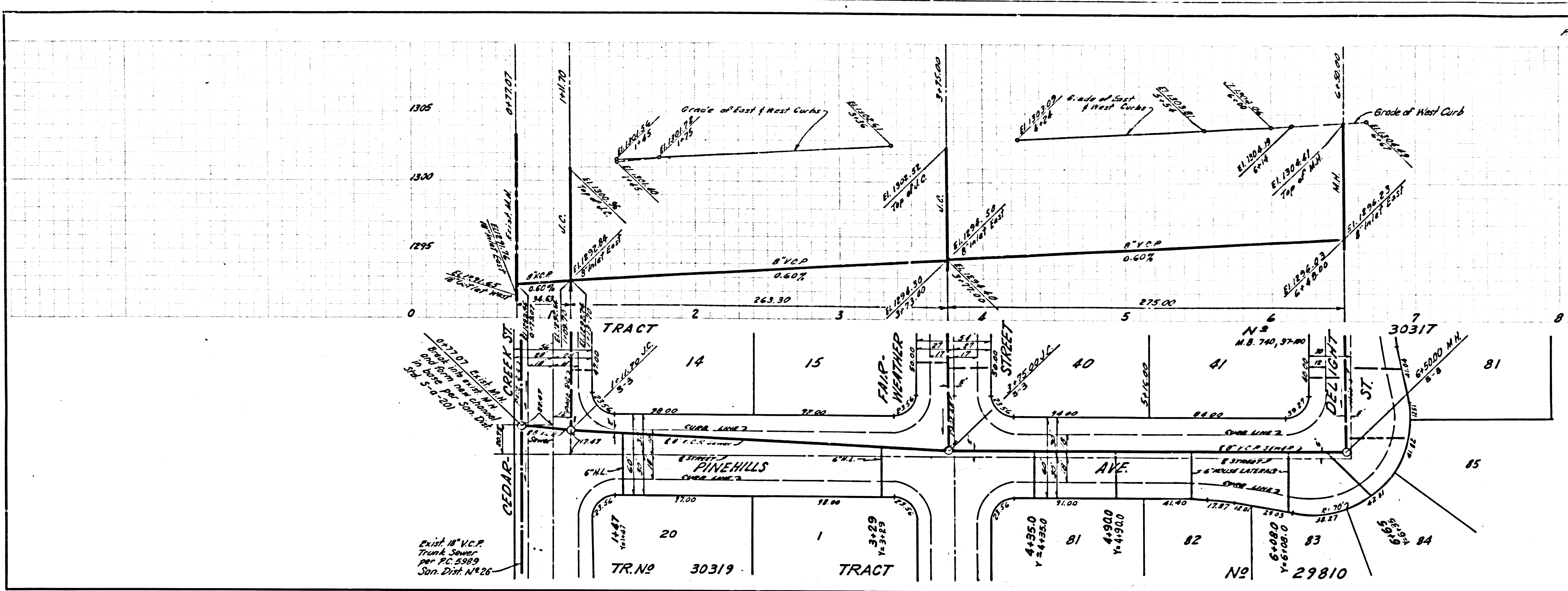
COUNTY OF LOS ANGELES, CALIFORNIA  
 JOHN A. LAMBIE, COUNTY ENGINEER J. D. PARKHURST, CHIEF ENGINEER  
 APPROVED BY: *[Signature]* APPROVED BY: *[Signature]*  
 ASSISTANT SANITATION ENGINEER OFFICE ENGINEER  
 CHECKED BY: *[Signature]*  
 MR. C.E. NO. 3446

J.N. 0265.15

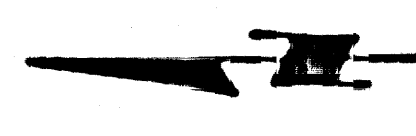


NO CHARGE FOR CONNECTIONS

37406



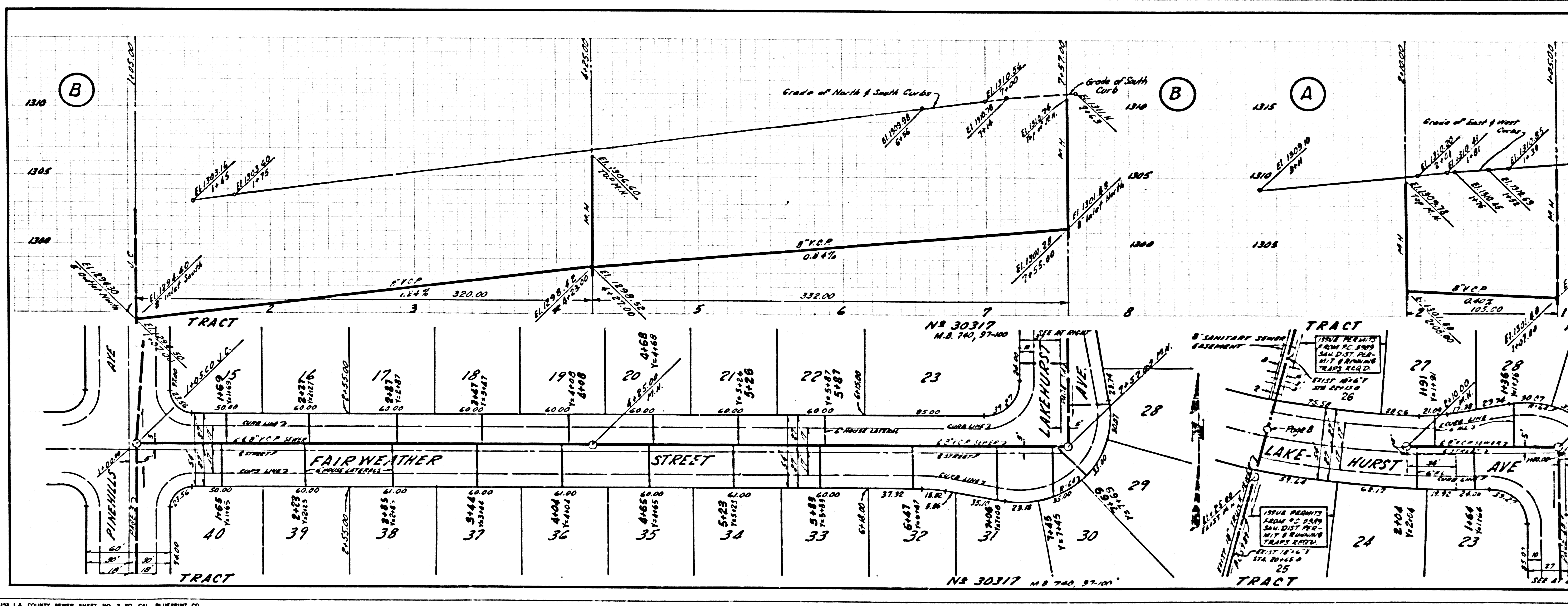
1305  
1300  
1295



Exist. 18\"/>

NO CHARGE FOR CONNECTIONS

37407

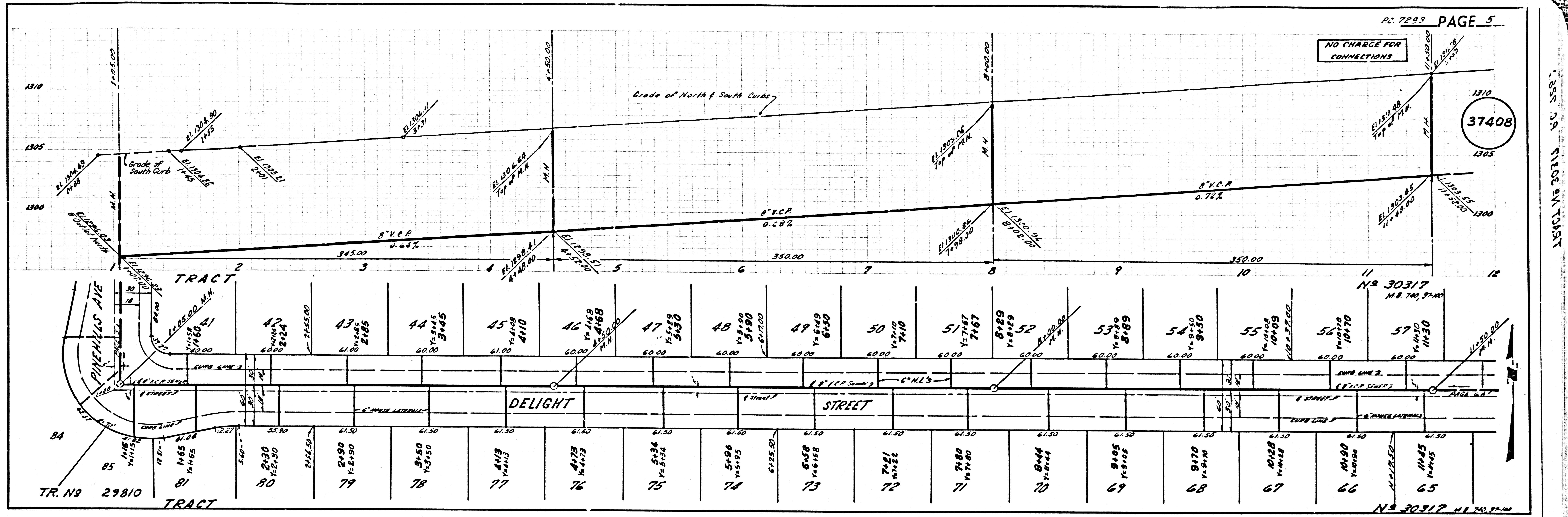


1315  
1310  
1305  
1300

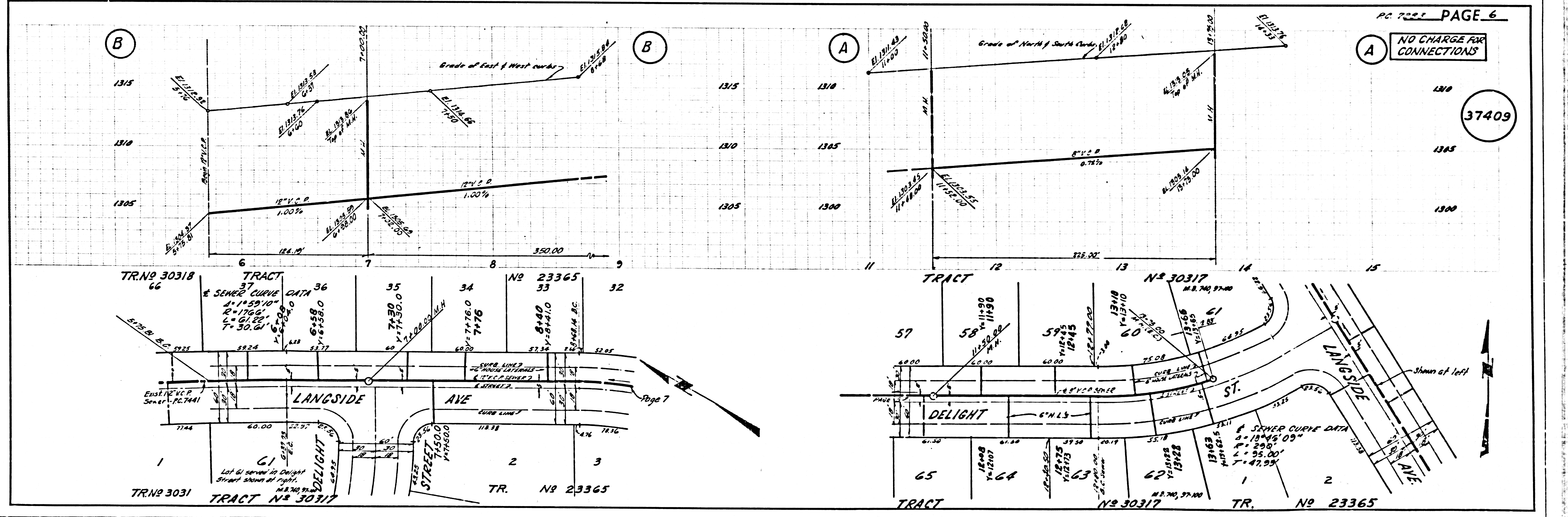


15\"/>

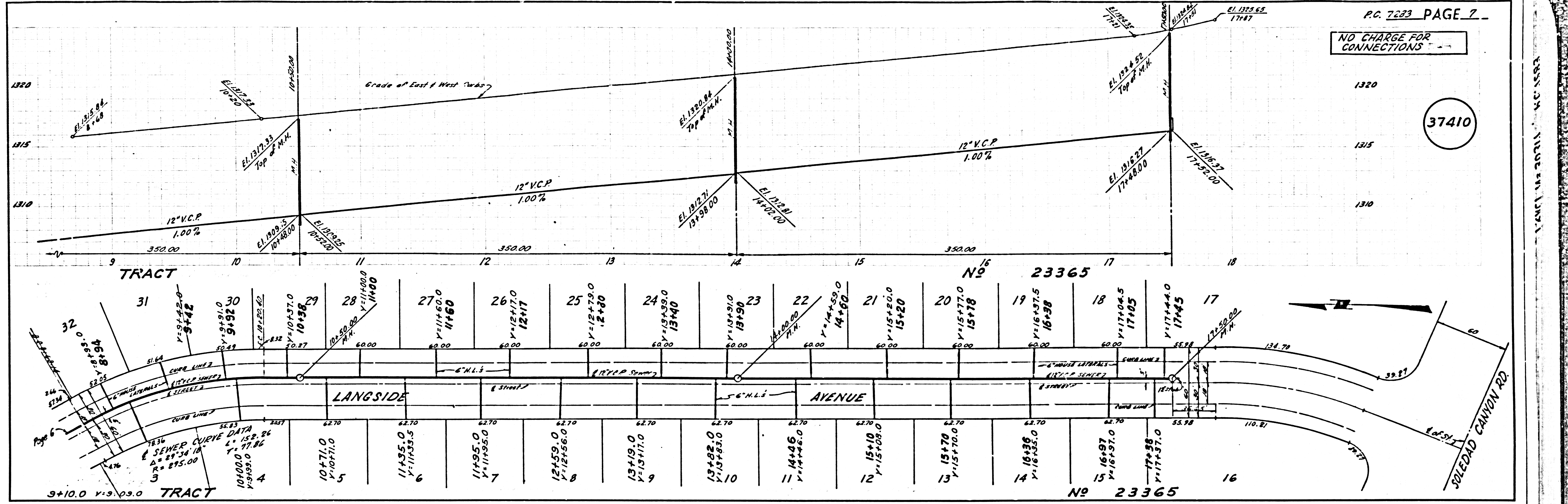
NO CHARGE FOR CONNECTIONS



NO CHARGE FOR CONNECTIONS

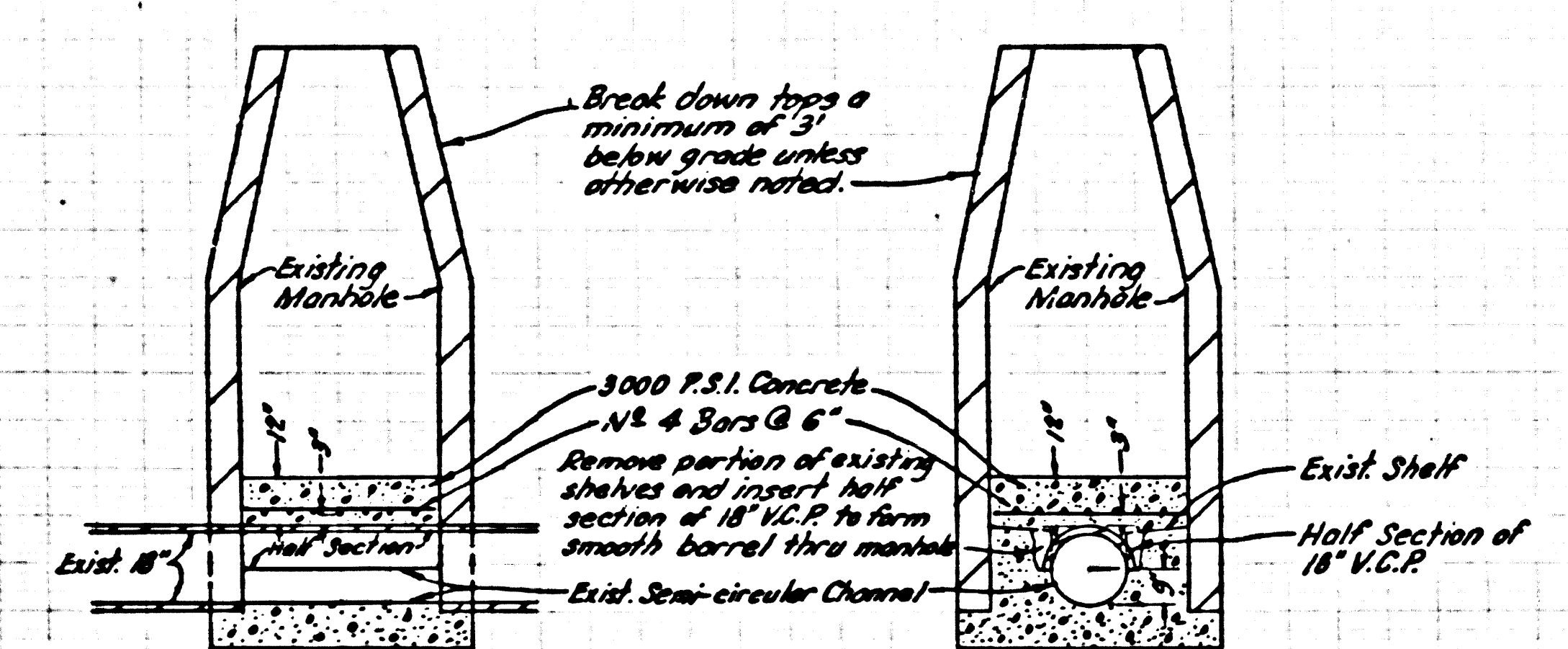


NO CHARGE FOR CONNECTIONS



ISSUE NO PERMITS FROM THIS PAGE

ALL INSPECTION ON THIS PAGE TO BE DONE BY SAN. DISTRICT.



DETAIL FOR MANHOLE ABANDONMENT  
NO SCALE

- NOTES:
1. No work is to be done on the abandonment of manholes or new manhole construction except in the presence of a Sanitation District representative.
  2. Contact Mr. Robert Powell, County Sanitation District Engineer of Construction 48 hours prior to commencing this work. Tel. Nevada 6-3097
  3. Salvage frames and covers and use on new manholes.

