

B.M. 5Y-4124-A ELEV. = 20.125  
 L & BN. COM. DWY. OF HOUSE  
 NE 716.53 VERA ST. 55' WEST OF  
 E 4 110 2 N. CARSON ST. MKD. B.M.  
 GARDENA QUAD. 19 42

LOMITA BLDG. DIST. NO. 12

PROFILE ALIGNMENT AND GRADE OF  
 SANITARY SEWERS PAGE 1  
 TO BE CONSTRUCTED IN

TRACT No 28467  
 PRIVATE CONTRACT NO. 7284

W.S. 28  
 2 SHEETS, 4 PAGES  
 SCALE: VERT. 1" = 4' HORIZ. 1" = 40'  
 FEBRUARY, 1965  
 PREPARED IN THE OFFICES OF  
**LANGO ENGINEERING**  
 Clark M. Leonard  
 REG. C.E. NO. 13167  
 FOR LEGEND SEE PLAN NO. 2-7

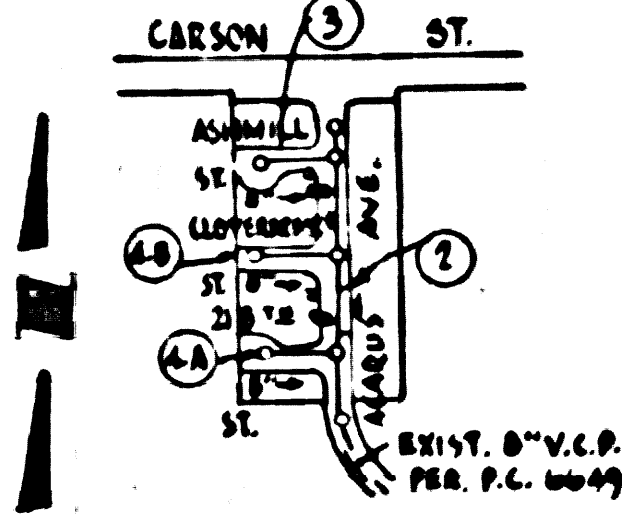
- NOTES
1. PROVIDE STAKES ON THE PROPERTY LINE OR PROPERTY LINES PRODUCED AT RIGHT ANGLES TO THE MAIN LINE AT THE CENTER LINE OF EACH MANHOLE.
  2. NO REPRESENTATIVE OF THE COUNTY ENGINEER WILL SURVEY OR LAY OUT ANY PORTION OF THE WORK.
  3. THE PRIVATE ENGINEER SHALL FURNISH THE COUNTY ENGINEER WITH GRADE SHEETS AND STATIONING FOR ALL HOUSE LATERALS AND Y BRANCHES AND SHALL PROVIDE STAKES FOR THEM AT THEIR PROPER LOCATIONS WITH STATIONING PLAINLY MARKED. ALL HOUSE LATERALS SHALL BE CONSTRUCTED IN A STRAIGHT ALIGNMENT AT RIGHT ANGLES FROM THE MAIN LINE EXCEPT AS SHOWN ON THE PLANS. HOUSE LATERALS FROM CHIMNEYS SHALL NOT HAVE AN ANGLE OF LESS THAN 120° WITH THE MAIN LINE SEWER. ANY CHANGE IN ALIGNMENT SHALL BE REQUESTED BY WRITING BY THE PRIVATE ENGINEER.
  4. THE PRIVATE ENGINEER SHALL FURNISH THE HOUSE LATERAL DEPTH AT THE PROPERTY LINE BELOW THE TOP OF CURB ELEVATION FOR EACH HOUSE LATERAL ON THE GRADE SHEET.
  5. NO REVISIONS SHALL BE MADE IN THESE SHEETS WITHOUT THE APPROVAL OF THE COUNTY ENGINEER.
  6. THE CONTRACTOR SHALL NOTIFY THE CONSTRUCTION DIVISION BY TELEPHONE, MARSHEN 9-4747, EXT. 8148, AT LEAST TWENTY FOUR HOURS BEFORE STARTING ANY WORK UNDER THIS CONTRACT.
  7. MAN HOLES SHALL BE BRICK SEWER STRUCTURES PER S-9 PRECAST CONCRETE MANHOLES PER S-6 OR S-6 MAY BE USED AS AN ALTERNATE IN LOCATIONS APPROVED BY THE COUNTY ENGINEER.
  8. USE STANDARD MANHOLE FRAMES AND COVERS, S-16 EXCEPT AS NOTED.
  9. ALL STATE & LOCAL TRENCH SAFETY ORDERS WILL BE RIGIDLY ENFORCED.
  10. USE EXTRA STRENGTH PIPE. ALL PIPE IS STANDARD DEPTH EXCEPT AS NOTED.
  11. USE MECHANICAL COMPRESSION JOINTS FOR ALL V.C.P. JOINTS PER SPCS, SECS. 34 & 40, § 49.
  12. PER ALLOWABLE LEAKAGE TEST USE FORMULA NET, SPCS, SEC. 34.
  13. IF A POWER POLE IS WITHIN THREE FEET OF THE SEWER, THE SEWER SHALL BE ENCASED, PER S-25 CASE IN TWO FEET ON EACH SIDE FROM THE POINT OF INTERFERENCE.
  14. IF DURING THE COURSE OF CONSTRUCTION IT IS DETERMINED THAT THERE IS LESS THAN FOUR FEET OF COVER OVER THE TOP OF A MAIN OR HOUSE LATERAL V.C.P. SEWER WHICH IS NOT INDICATED ON THE PLANS, THE PIPE SHALL BE ENCASED PER S-25 UNLESS OTHERWISE APPROVED BY THE COUNTY ENGINEER.
  15. HOUSE LATERALS TO BE CONSTRUCTED WITH INVERTS AT PROPERTY LINE, ... 6 ... FEET BELOW CURB GRADE EXCEPT AS NOTED.
  16. BRUSHPILE ALL TRENCHES WITHIN PAVED AREAS TO MEET L.A. COUNTY ROAD DEPT. OR CALIFORNIA STATE HIGHWAY REQUIREMENTS IN ACCORDANCE WITH PERMITS.

NOTE  
 GRADES TO WHICH THIS IMPROVEMENT IS TO BE CONSTRUCTED ARE SHOWN ON PLANS AND PROFILES. GRADE POINTS FOR TOP OF CURBS, CENTER LINE OF STREETS, OR CENTER LINE OF ALLEYS ARE SHOWN BY CIRCLES ON PROFILES AT ALL POINTS BETWEEN DESIGNATED POINTS. THE GRADE SHALL BE ESTABLISHED SO AS TO CONFORM TO A STRAIGHT LINE DRAWN BETWEEN SAID DESIGNATED POINTS. ELEVATIONS ARE IN FEET ABOVE U.S.C. & G.S. SEA LEVEL DATUM OF 1929.  
 THIS DRAWING AND THE DATA HEREON ARE HEREBY MADE A PART OF THE SPECIFICATIONS.  
 WORK SHALL BE CONSTRUCTED ACCORDING TO STANDARD SPECIFICATIONS DATED MAY 25, 1952, ON FILE IN THE OFFICE OF THE COUNTY ENGINEER AND SHALL BE PROSECUTED ONLY IN THE PRESENCE OF THE COUNTY ENGINEER.  
 BEFORE WORK CAN BE STARTED, THE CONTRACTOR MUST OBTAIN A PERMIT TO EXCAVATE IN COUNTY STREETS FROM THE L.A. COUNTY ROAD DEPT., DISTRICT OFFICE NO. 2, AND PAY A FEE TO THE COUNTY ENGINEER, ROOM 309, COUNTY ENGINEERING BUILDING, 126 WEST SECOND STREET, DE PALOS VERDES - CANTONELLA VALLEY REGIONAL OFFICE, SUFFICIENT TO COVER THE COST OF CONSTRUCTION INSPECTION AND RECORD PLANS.  
 APPROVAL OF THIS PLAN BY THE COUNTY OF LOS ANGELES DOES NOT CONSTITUTE A REPRESENTATION AS TO THE ACCURACY OF THE LOCATION OF OR THE EXISTENCE OR NON-EXISTENCE OF ANY UNDERGROUND UTILITY PIPE, OR STRUCTURE WITHIN THE LIMITS OF THIS PROJECT. THIS NOTE APPLIES TO ALL PAGES.  
 IF WORK IS TO BE DONE IN A STATE HIGHWAY, A PERMIT MUST BE OBTAINED FROM THE STATE OF CALIFORNIA, DIVISION OF HIGHWAYS, 126 SOUTH SPRING STREET, LOS ANGELES, CALIFORNIA.

COUNTY OF LOS ANGELES, CALIFORNIA  
 JOHN A. LAMBIE, COUNTY ENGINEER  
 APPROVED BY: *R. E. Kelly* ASSISTANT SANITATION ENGINEER  
 SUBMITTED BY: *Clark M. Leonard* PROFESSIONAL ENGINEER  
 CHECKED BY: *Edward J. Volante* REG. C.E. NO. 10653  
 J. D. PARKHURST, CHIEF ENGINEER  
 APPROVED BY: *J. D. Parkhurst* OFFICE ENGINEER

NO CONNECTIONS FOR THE DISPOSAL OF INDUSTRIAL WASTES SHALL BE MADE TO SEWERS SHOWN ON THESE DRAWINGS WITHOUT WRITTEN PERMISSION FROM THE CHIEF ENGINEER AND GENERAL MANAGER OF THE COUNTY SANITATION DISTRICTS.

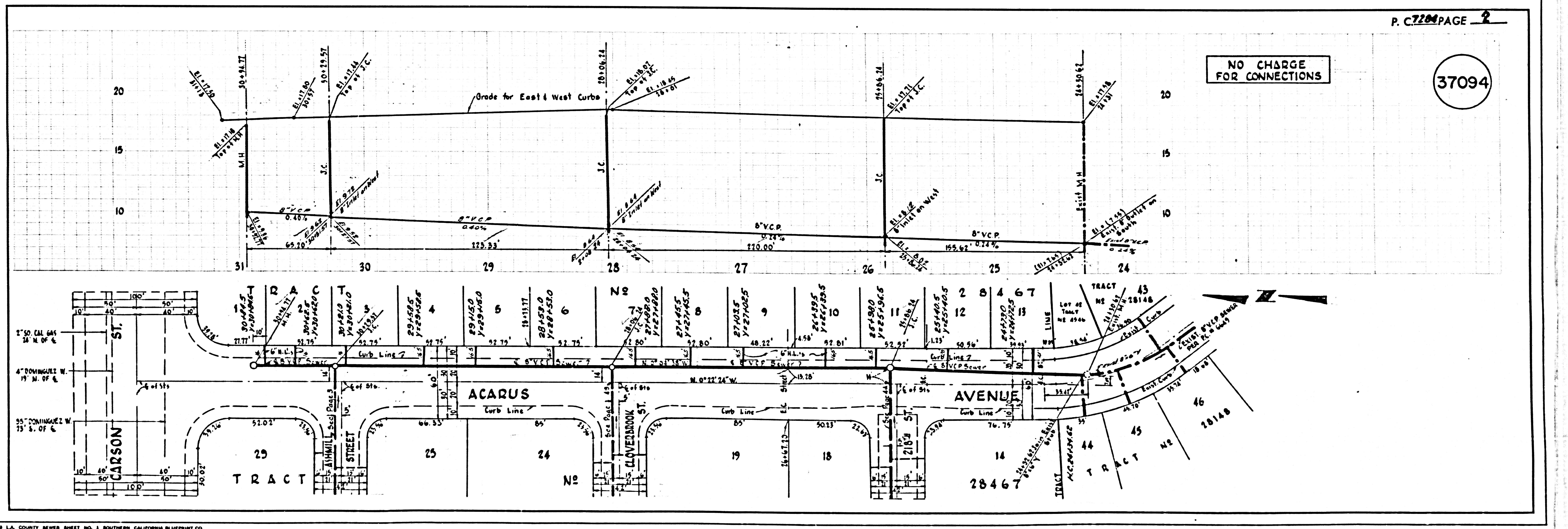
COLLECT CHARGES AS INDICATED  
*Revised 7/27/65*



INDEX MAP  
 TRACT No 28467  
 Scale: 1" = 600'  
 P.C. 7284

REVISIONS  
 PAGE 4A - MOVED MANHOLE, 20' W/ELY & HARD 3 HOUSE LATERALS.  
 Approved: *Edward J. Volante*  
 REG. C.E. NO. 10653

NOTICE TO CONTRACTOR  
 The existence and location of any underground utility pipes or structures shown on these plans are obtained by a search of the available records. To the best of my knowledge there are no existing utilities except as shown on these plans.  
 The contractor is required to take due precautionary measures to protect the utility lines shown and any other lines not of record or not shown on these plans.  
 Clark M. Leonard  
 REG. C.E. NO. 13167

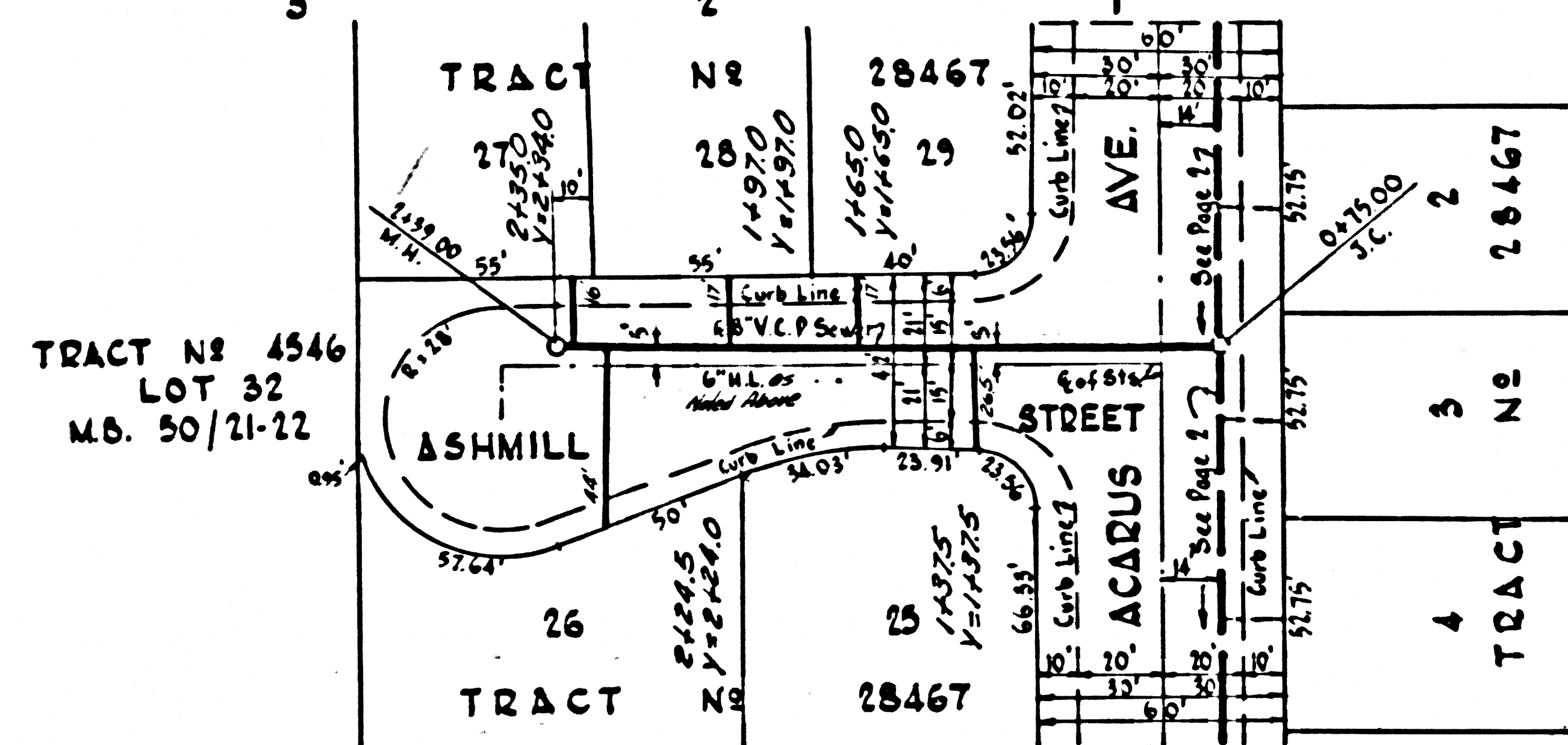
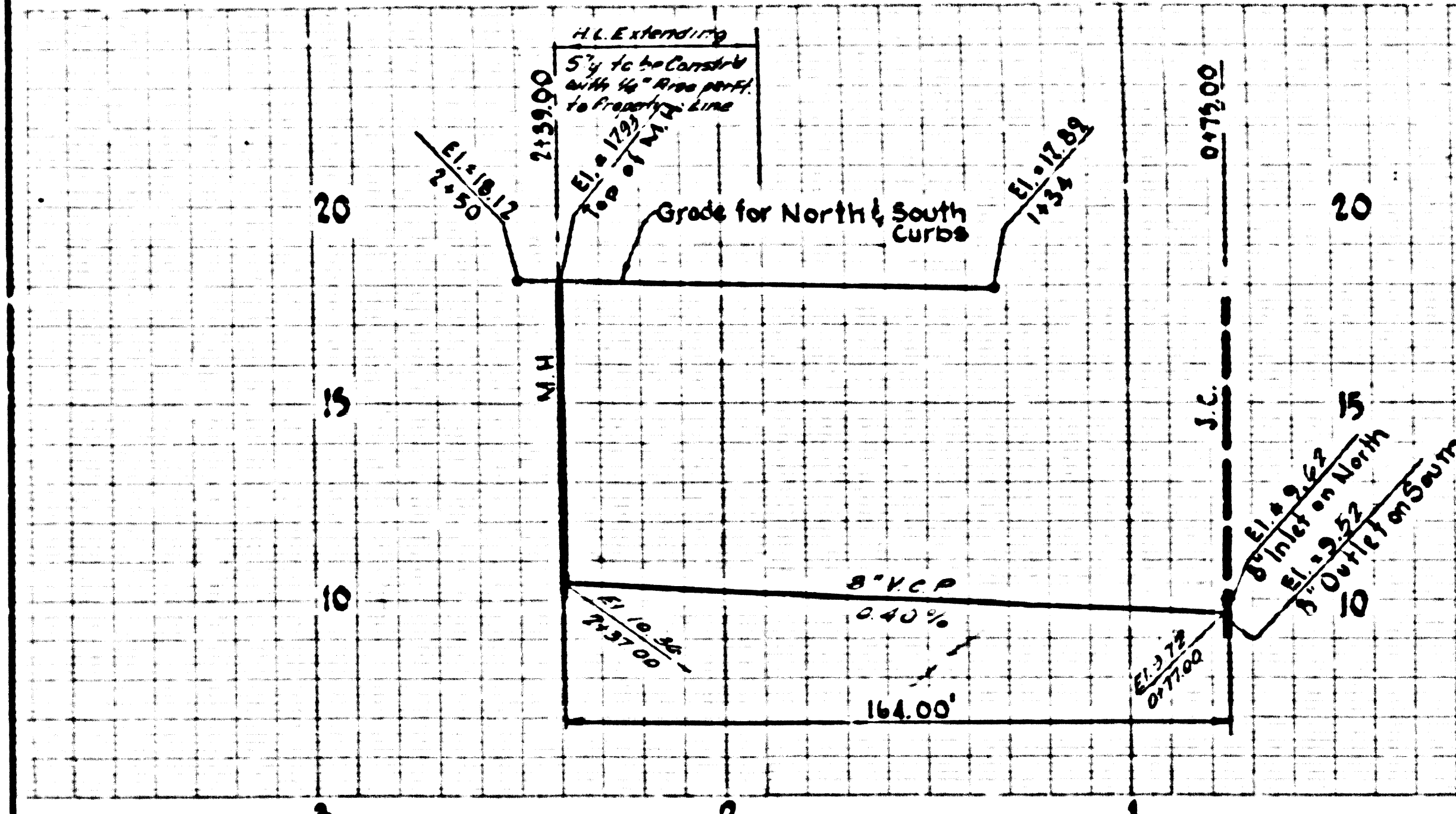


NO CHARGE FOR CONNECTIONS

37094

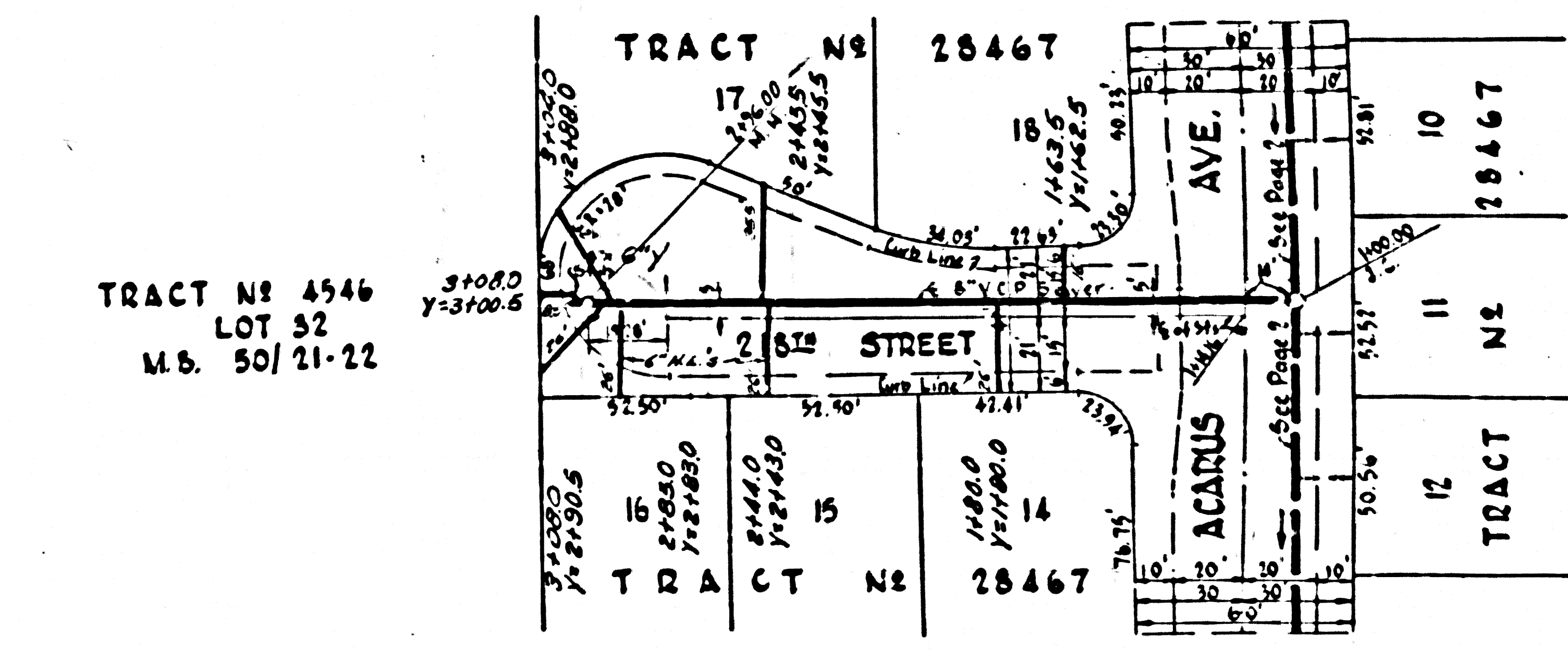
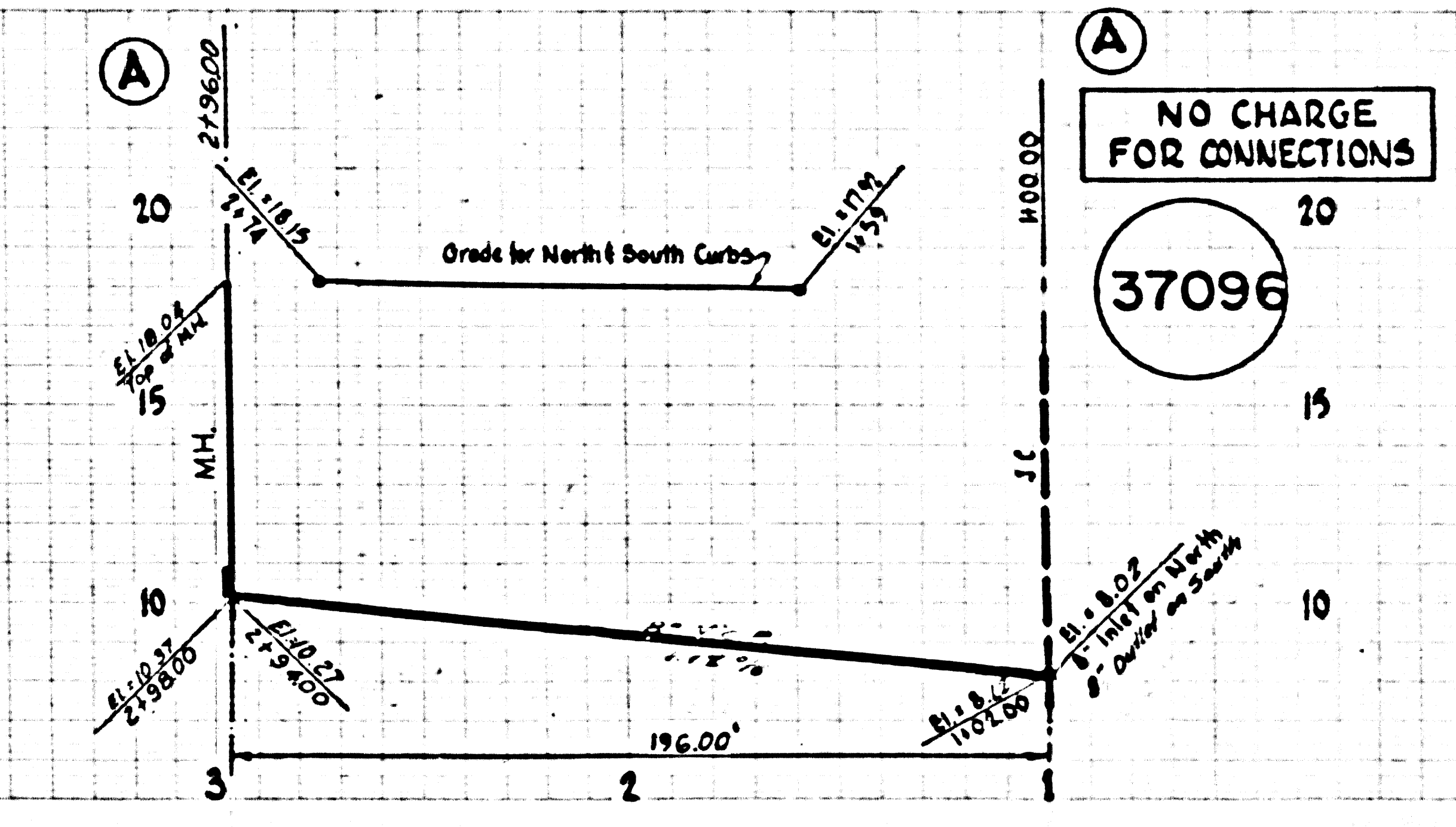
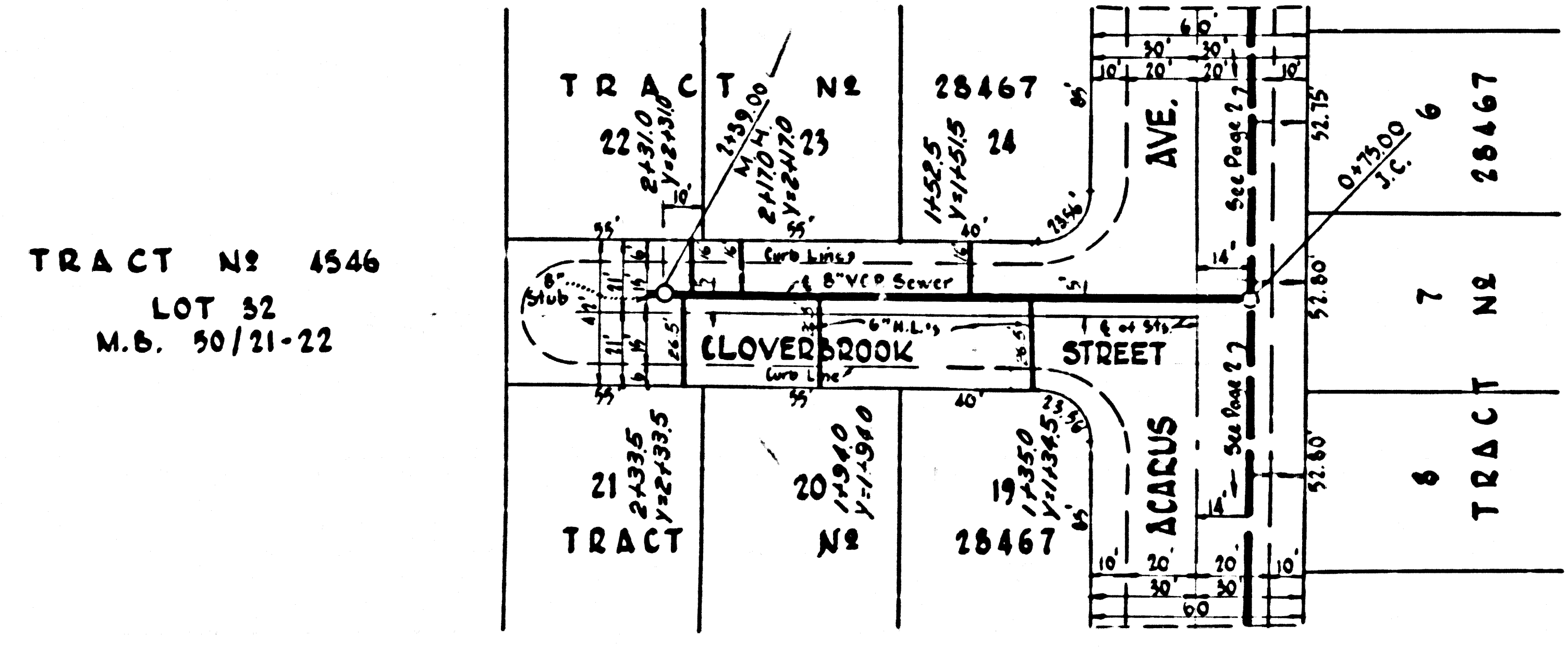
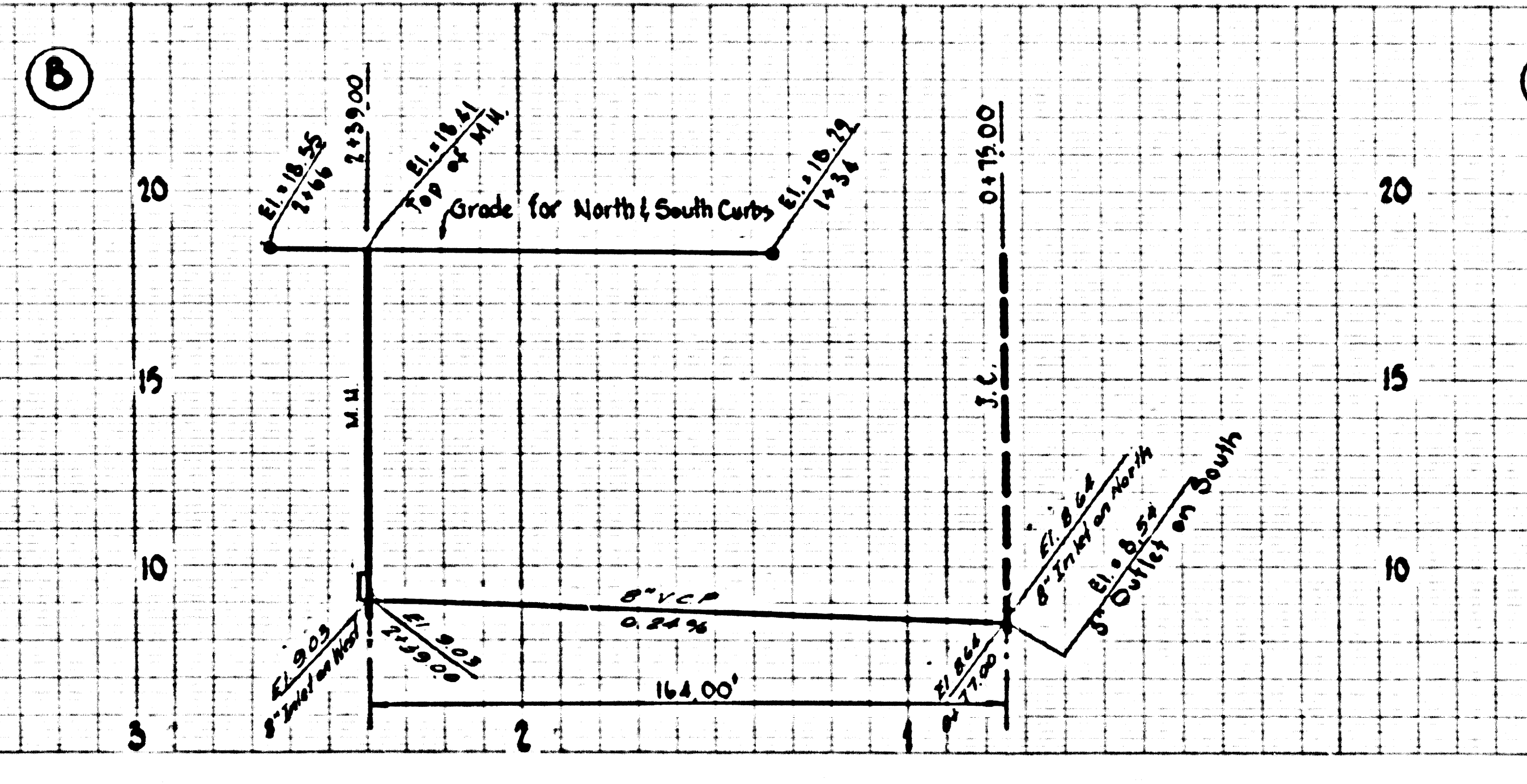
NO CHARGE FOR CONNECTIONS

37095



NO CHARGE FOR CONNECTIONS

37096



M&E 17513 L.A. COUNTY SEWER SHEET NO. 2 (D.L. CAL. BLUEPRINT CO. LA 0112)

B-522