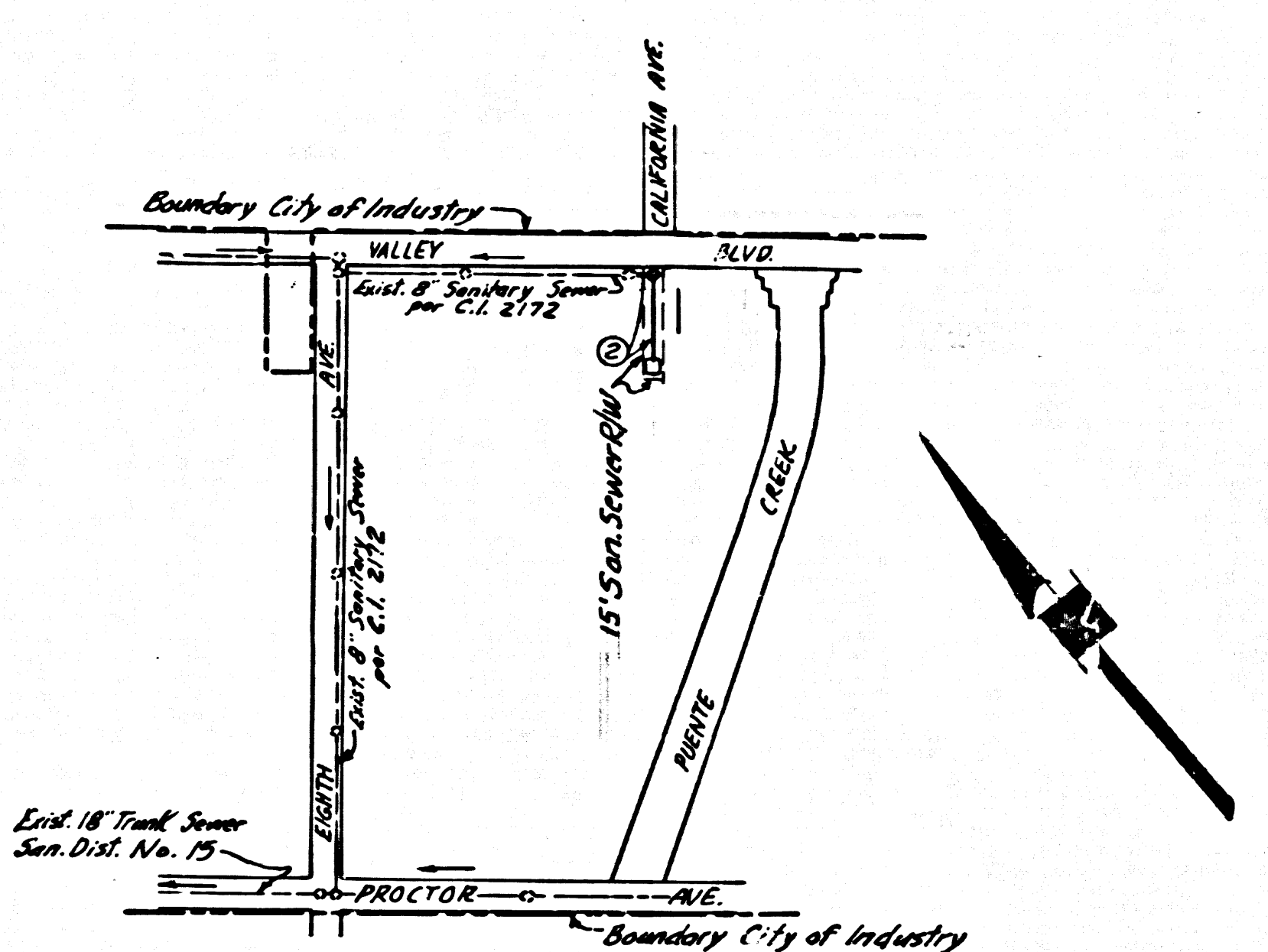


B.M. 1056 ELEV. 3045.71
 L. & T. ± 10' N/O Brg. ch. ret. @
 N.E. cor. VALLEY BLVD. &
 CALIFORNIA AVE.
 PUENTE QUAD 1965



INDEX MAP
 SCALE: 1"=400'
 P.C. 7305
 VALLEY BOULEVARD & R/W

LA PUENTE BLDG. DIST. NO. 2

PROFILE ALIGNMENT AND GRADE OF P.C. 7305
 SANITARY SEWERS PAGE 1
 CONSTRUCTED IN
 VALLEY BOULEVARD & R/W

PRIVATE CONTRACT NO. 7305

W.S. 38
 1 SHEET OF 2 PAGES
 SCALE: VERT. 1"=4' DECEMBER, 1965
 PREPARED IN THE OFFICES OF
 POND ENGINEERING COMPANY
 910 E. GARDEN AVENUE
 WEST COVINA, CALIFORNIA
 REG. C. E. NO. 14004

37968

- NOTES:
1. PROVIDE STAKES ON THE PROPERTY LINE OR PROPERTY LINES PRODUCED AT RIGHT ANGLES TO THE SEWER LINE AT THE CENTER LINE OF EACH MANHOLE.
 2. NO REPRESENTATIVE OF THE COUNTY ENGINEER WILL SURVEY OR LAY OUT ANY PORTION OF THE WORK.
 3. THE PRIVATE ENGINEER SHALL FURNISH THE COUNTY ENGINEER WITH GRADE SHEETS AND STARTING POINT FOR ALL HOUSE LATERALS AND Y.C.P. JOINTS AND PROVIDE STAKES FOR THEM AT THEIR PROPER LOCATIONS WITH LABELS FROM THE MAIN LINE SEWER. HOUSE LATERALS SHALL BE CONSTRUCTED IN A STRAIGHT ALIGNMENT AT RIGHT ANGLES TO THE MAIN LINE SEWER. ANY CHANGE IN ALIGNMENT SHALL BE REQUESTED IN WRITING BY THE PRIVATE ENGINEER.
 4. THE PRIVATE ENGINEER SHALL FURNISH THE HOUSE LATERAL DEPTH AT THE PROPERTY LINE BELOW THE TOP OF CURB ELEVATION FOR EACH HOUSE LATERAL ON THE GRADE SHEET.
 5. NO REVISIONS SHALL BE MADE IN THESE PLANS WITHOUT THE APPROVAL OF THE COUNTY ENGINEER.
 6. USE STANDARD MANHOLE FRAMES AND COVERS, S-15.
 7. USE EXTRA STRENGTH PIPE. ALL PIPE IS STANDARD DEPTH.
 8. USE MECHANICAL COMPRESSION JOINTS FOR ALL Y.C.P. JOINTS PER SPECS., SEC. 34, 48 & 49.
 9. RESURFACE ALL TRENCH WITHIN PAVED AREA TO MEET L.A. COUNTY ROAD DEPT. OR CALIF. STATE HIGHWAY REQUIREMENTS IN ACCORDANCE WITH PERMITS.
 10. ALL STATE AND LOCAL TRENCH SAFETY ORDERS WILL BE ENFORCED.
 11. HOUSE LATERALS TO BE CONSTRUCTED AT 16" PER FOOT RISE TO PROPERTY LINE.
 12. IF A POWER POLE IS WITHIN 3 FEET OF THE SEWER, THE SEWER SHALL BE ENCASED PER S-23.
 13. FOR ALLOWABLE LEAKAGE TEST USE FORMULA NO. 2, SPECS., SEC. 34.
 14. MANHOLE TOPS IN IMPROVED RIGHTS-OF-WAY TO BE LEVEL WITH FINISHED GRADE.
 15. THE CONTRACTOR SHALL NOTIFY THE CONSTRUCTION DIVISION BY TELEPHONE, MADISON 9-417, 48 HRS. AT LEAST TWENTY-FOUR HOURS BEFORE STARTING ANY WORK UNDER THIS CONTRACT.
 16. MANHOLES SHALL BE BRICK SEWER STRUCTURES PER S-3. BRICKS BEST CONCRETE MANHOLES PER S-5 & S-6 MAY BE USED AS AN ALTERNATE IN LOCATIONS APPROVED BY THE COUNTY ENGINEER.
 17. IF DURING THE COURSE OF CONSTRUCTION IT IS DETERMINED THAT THERE IS LESS THAN FOUR FEET OF COVER OVER THE TOP OF A MAIN LINE OR HOUSE LATERAL Y.C.P. SEWER WHICH IS NOT INDICATED ON THE PLANS, THE PIPE SHALL BE ENCASED PER S-23 UNLESS OTHERWISE APPROVED BY THE COUNTY ENGINEER.
 18. ALL TO BE LAID FLAT.

NO CONNECTIONS FOR THE DISPOSAL OF INDUSTRIAL WASTES SHALL BE MADE TO SEWERS SHOWN ON THESE DRAWINGS WITHOUT WRITTEN PERMISSION FROM THE CHIEF ENGINEER AND GENERAL MANAGER OF THE COUNTY SANITATION DISTRICTS.

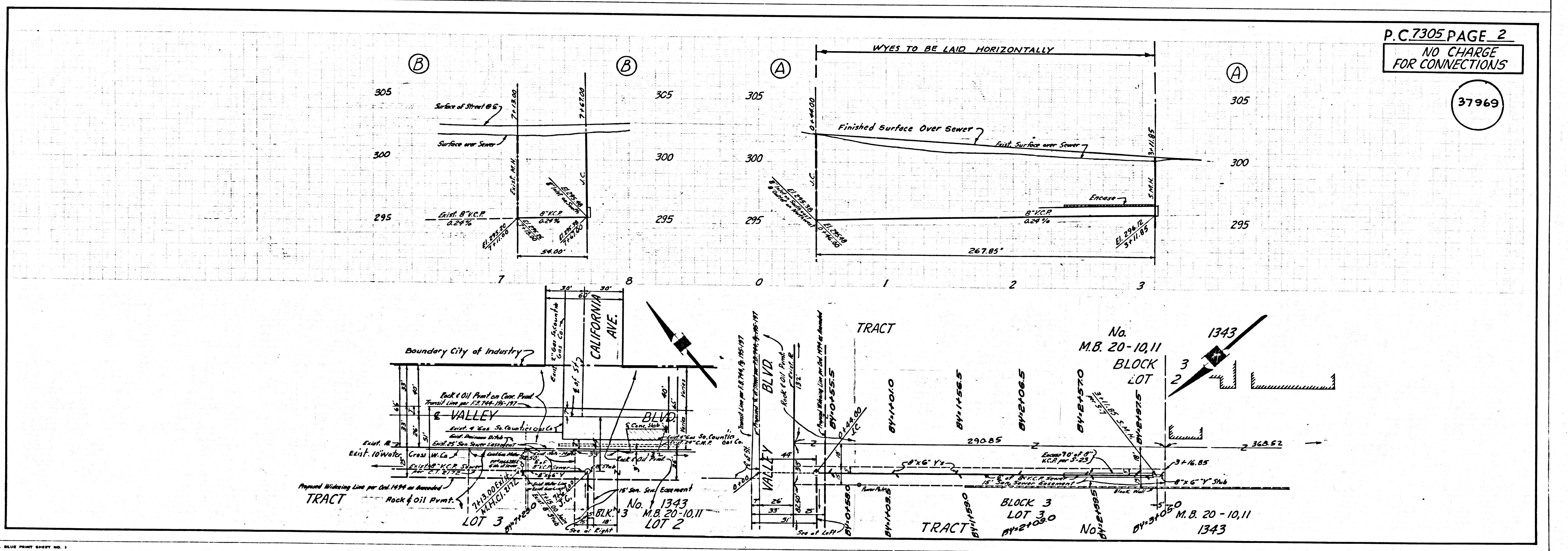
APPROVED
 DATE 2-9-66
 INDUSTRIAL WASTE DIVISION
 COUNTY OF LOS ANGELES

COLLECT CHARGES AS INDICATED.
 S. Reyes 2-3-66

NOTE:
 GRADES TO WHICH THIS IMPROVEMENT IS TO BE CONSTRUCTED ARE SHOWN ON PLANS AND PROFILES. GRADE POINTS FOR TOP OF CURB, CENTER LINE OF STREETS, OR CENTER LINE OF ALLEYS ARE SHOWN BY CIRCLES ON PROFILES. AT ALL POINTS BETWEEN DESIGNATED POINTS THE GRADE SHALL BE ESTABLISHED SO AS TO CONFORM TO A STRAIGHT LINE DRAWN BETWEEN SAID DESIGNATED POINTS.
 ELEVATIONS ARE IN FEET ABOVE U.S.C. & G.S. SEA LEVEL DATUM OF 1929.
 THIS DRAWING AND THE DATA HEREON ARE HEREBY MADE A PART OF THE SPECIFICATIONS.
 WORK SHALL BE CONSTRUCTED ACCORDING TO STANDARD SPECIFICATIONS AND SHALL BE REFERRED ON FILE IN THE OFFICE OF THE COUNTY ENGINEER AND SHALL BE PROSECUTED AWAY IN THE ABSENCE OF THE COUNTY ENGINEER. BEFORE WORK CAN BE STARTED THE CONTRACTOR MUST OBTAIN A PERMIT TO LOCATE IN COUNTY STREETS FROM THE L.A. COUNTY ROAD DISTRICT OFFICE NO. 1 AND PAY A FEE TO THE COUNTY ENGINEER FROM 330 COUNTY ST. AS BY AN ORDINANCE OF THE COUNTY OF LOS ANGELES. THE CONTRACTOR SHALL BE RESPONSIBLE TO OBTAIN THE APPROVAL OF THIS PLAN BY THE COUNTY OF LOS ANGELES. THE CONTRACTOR DOES NOT CONSTITUTE A REPRESENTATION AS TO THE ACCURACY OF THE LOCATION OF OR THE EXISTENCE OR NON-EXISTENCE OF ANY UNDERGROUND UTILITY PIPE, OR STRUCTURE WORK TO BE DONE IN A STATE HIGHWAY. A PERMIT MUST BE OBTAINED FROM THE STATE OF CALIFORNIA, DIVISION OF HIGHWAYS, 120 SOUTH SPRING STREET, LOS ANGELES, CALIFORNIA.

COUNTY OF LOS ANGELES, CALIFORNIA
 APPROVED, JOHN A. LAMBIE, COUNTY ENGINEER J. D. PARKHURST, CHIEF ENGINEER
 CO SAN. DIST. NO. 15
 ASSISTANT SANITATION ENGINEER APPROVED BY [Signature]
 SUBMITTED BY [Signature] 2-9-66
 CHECKED BY [Signature] 2-9-66

J.N. 036527



P.C. 7305 PAGE 2
 NO CHARGE FOR CONNECTIONS

37969