

REVISIONS

- ALIGNMENT CHANGED FROM STA. 94+74.54 TO STA. 103+11.74
- MAIN LINE ADDED IN SULPHUR SPRINGS AVE. PAGE 22.

APPROVED
Ralph Schep
 COUNTY ENGINEER

DOUBLE SCALE
NEWHALL BLDG. DIST. NO. 8.2

NOTE:

- PROVIDE STAKES ON THE PROPERTY LINE OR PROPERTY LINES PRODUCED AT RIGHT ANGLES TO THE SEWER LINE AT THE CENTER LINE OF EACH MANHOLE.
- NO REPRESENTATIVE OF THE COUNTY ENGINEER WILL SURVEY OR LAY OUT ANY PORTION OF THE WORK.
- THE PRIVATE ENGINEER SHALL FURNISH THE COUNTY ENGINEER WITH GRADE SHEETS AND STATIONING FOR ALL HOUSE LATERALS AND Y BRANCHES AND SHALL PROVIDE STAKES FOR THESE AT THEIR PROPER LOCATIONS WITH STATIONING PLAINLY MARKED. ALL HOUSE LATERALS SHALL BE CONSTRUCTED IN A STRAIGHT ALIGNMENT AT RIGHT ANGLES FROM THE MAIN LINE SEWER EXCEPT AS SHOWN ON THE PLANS. HOUSE LATERALS FROM CHIMNEYS SHALL NOT HAVE AN ANGLE OF LESS THAN 45° WITH THE MAIN LINE SEWER. ANY CHANGE IN ALIGNMENT SHALL BE REQUESTED IN WRITING BY THE PRIVATE ENGINEER.
- THE PRIVATE ENGINEER SHALL FURNISH THE HOUSE LATERAL DEPTH AT THE PROPERTY LINE BELOW THE TOP OF CURB ELEVATION FOR EACH HOUSE LATERAL ONE THE GRADE SHEET.
- NO REVISIONS SHALL BE MADE IN THESE PLANS WITHOUT THE APPROVAL OF THE COUNTY ENGINEER.
- THE CONTRACTOR SHALL NOTIFY THE CONSTRUCTION DIVISION BY TELEPHONE, MADISON 9-423, EXT. 8151, AT LEAST TWENTY-FOUR HOURS BEFORE STARTING ANY WORK UNDER THIS CONTRACT.
- MANHOLES SHALL BE BRICK SEWER STRUCTURES PER S. 3 - 3 PRECAST CONCRETE MANHOLES PER S. 5 - 5 OR S. 6 - 6 MAY BE USED AS AN ALTERNATE IN LOCATIONS APPROVED BY THE COUNTY ENGINEER.
- USE STANDARD MANHOLE FRAMES AND COVERS, S. 5 - 5, EXCEPT AS NOTED.
- MANHOLE TOPS IN UNIMPROVED RIGHTS-OF-WAY TO BE SIX INCHES ABOVE FINISHED GRADE.
- USE EXTRA STRENGTH PIPE. ALL PIPE IS STANDARD DEPTH EXCEPT AS NOTED.
- USE CHAIN SHORTER OR MECHANICAL COMPRESSION JOINTS FOR ALL V.C.P. JOINTS PER SPEC., SECS. 26 & 44, OR PER NOTE @ Pg. 22.
- WHERE EVER GROUND WATER IS DISCOVERED DURING THE CONSTRUCTION OF THE SEWER, THE V.C.P. JOINTS SHALL BE OF JOINT COMPOUND PER SPEC., SECS. 26 & 44, OR MECHANICAL COMPRESSION JOINTS PER SPEC., SEC. 26.
- IF A POWER POLE IS WITHIN THREE FEET OF THE SEWER, THE SEWER SHALL BE ENCASED, PER S. 23 - 14. TWO FEET ON EITHER SIDE FROM THE POINT OF INTERFERENCE.
- IF DURING THE COURSE OF CONSTRUCTION IT IS DETERMINED THAT THERE IS LESS THAN FOUR FEET OF COVER OVER THE TOP OF A MAIN LINE OR HOUSE LATERAL V.C.P. SEWER WHICH IS NOT INDICATED ON THE PLANS, THE PIPE SHALL BE ENCASED PER S. 23 - 14 UNLESS OTHERWISE APPROVED BY THE COUNTY ENGINEER.
- HOUSE LATERALS TO BE CONSTRUCTED WITH INVERTS AT PROPERTY LINE ... FEET BELOW CURB GRADE EXCEPT AS NOTED.
- RESURFACE ALL TRENCHES WITHIN PAVED AREAS TO MEET L.A. COUNTY ROAD DEPT. OR CALIFORNIA STATE HIGHWAY REQUIREMENTS IN ACCORDANCE WITH PERMITS.
- FOR ALLOWABLE LEAKAGE TEST USE FORMULA NO. ... 2 ... SPEC. SEC. 34.
- ALL STATE AND LOCAL TRAVEL SAFETY ORDERS WILL BE RIGIDLY ENFORCED.
- CONSTRUCTION IN FILLED AREAS
 - AN ACCEPTABLE CERTIFICATION OF COMPACTION TEST RESULTS SHALL BE SUBMITTED TO THE CONSTRUCTION DIVISION. COMPACTION TESTS ARE TO BE MADE IN ACCORDANCE WITH A.S.T.M. STANDARD METHOD OF TEST D-293-82.
 - NO CONSTRUCTION IS PERMITTED IN FILLED AREAS WHERE THE RELATIVE DENSITY OF COMPACTION IS LESS THAN 90%.
 - IF THE RELATIVE DENSITY OF COMPACTION IS LESS THAN 90%, ALL MAIN LINE AND HOUSE LATERALS SHALL BE GRADED PER S. 23 - 14 OR HAVE A SPECIAL BASE COURSE PER S. 21 - 14. CASE III. SPECIAL MANHOLE BASES PER S. 14 ARE REQUIRED.
 - IF THE RELATIVE DENSITY OF COMPACTION IS 90% OR GREATER, THE SPECIAL PROVISIONS IN (C) ARE NOT REQUIRED.
- FOR VERTICAL CURVE SHOWN ON PAGE 21 A USE "L" LENGTHS OF "S" V.C.P.

Soil brines from regeneration of water softeners shall not be discharged to the sewers shown hereon per resolution of the Board of Directors of County Sanitation District No. 26.

Any connection to the sewage system of County Sanitation District, provided directly or indirectly by the sewers shown on these plans, shall be considered a temporary connection until all areas sewered are annexed to said district, at which time the connection shall become permanent. If for any reason the annexation to the district of any area sewered hereunder is not completed, the property not in the district will be required to disconnect unless a contract is entered into with the district providing for the disposal of sewage from the area.

GROUND UTILITY PIPE OR STRUCTURE WITHIN THE LIMITS OF THIS PROJECT. THE CONTRACTOR IS REQUIRED TO TAKE ALL DUE PRECAUTIONARY MEASURES TO PROTECT THE UTILITY LINES NOT OF RECORD OR NOT SHOWN ON THIS PLAN. THE CONTRACTOR IS REQUIRED TO CONTACT ALL UTILITY AGENCIES WITH FACILITIES WITHIN THE LIMITS OF THIS PROJECT PRIOR TO START CONSTRUCTION FOR FIELD VERIFICATION OF UNDERGROUND MAINS AND SERVICES. APPROVAL OF THIS PLAN BY THE LOS ANGELES COUNTY DOES NOT CONSTITUTE A REPRESENTATION AS TO THE ACCURACY OR COMPLETENESS OF THE LOCATION OR THE EXISTENCE OF ANY UNDERGROUND UTILITY PIPE OR STRUCTURE WITHIN THE LIMITS OF THIS PROJECT.

COLLECT CHARGES AS INDICATED
Ralph Schep

BEFORE BREAKING INTO ANY EXISTING STRUCTURE AND BEFORE FINAL ACCEPTANCE OF THIS WORK COUNTY SANITATION DISTRICT (DU 4-1281) SHALL BE NOTIFIED IN ORDER THAT REQUIRED INSPECTION CAN BE MADE.

NO CONNECTIONS FOR THE DISPOSAL OF INDUSTRIAL WASTES SHALL BE MADE TO SEWERS SHOWN ON THESE DRAWINGS WITHOUT WRITTEN PERMISSION FROM THE CHIEF ENGINEER AND GENERAL MANAGER, OF THE COUNTY SANITATION DISTRICTS.

PROFILE ALIGNMENT AND GRADE OF **P.C. 7306**
SANITARY SEWERS PAGE 1

CONSTRUCTED IN
TRACT NO 23429
AND SOLEDAD CANYON ROAD
 (From WHITES CANYON RD. TO SAND CANYON RD.)

PRIVATE CONTRACT NO. 7306
AND 7306 B
 W.S. 62
11 SHEETS, 22 PAGES AND 7306 C

SCALE: VERT. 1" = 4'
 HORIZ. 1" = 40' SEPTEMBER 1965

PREPARED IN THE OFFICES OF
VOORHEIS TRINDLE CO.
 5919 VAN NUYS BLVD., VAN NUYS, CALIF.

BY: *R. Nelson*
 REG. C. E. NO. 2731

FOR LEGEND SEE PLAN NO. S-1

NOTE:
 GRADES TO WHICH THE IMPROVEMENT IS TO BE CONSTRUCTED ARE SHOWN ON PLANS AND PROFILES. GRADE POINTS FOR TOP OF CURBS, CENTER LINE OF STREETS, OR CENTER LINE OF ALLEYS ARE SHOWN BY CIRCLES ON PROFILES. AT ALL POINTS BETWEEN DESIGNATED POINTS THE GRADE SHALL BE ESTABLISHED SO AS TO CONFORM TO A STRAIGHT LINE DRAWN BETWEEN SAID DESIGNATED POINTS. ELEVATIONS ARE IN FEET ABOVE U.S.C. & G.S. SEA LEVEL DATUM OF 1929. THIS DRAWING AND THE SPECIFICATIONS ARE HEREBY MADE A PART OF THE SPECIFICATIONS. WORK SHALL BE CONSTRUCTED ACCORDING TO STANDARD SPECIFICATIONS DATED MAY 15, 1962, ON FILE IN THE OFFICE OF THE COUNTY ENGINEER AND SHALL BE SUBJECT ONLY TO THE PRESENCE OF THE COUNTY ENGINEER. BEFORE WORK CAN BE STARTED, THE CONTRACTOR MUST OBTAIN A PERMIT TO EXCAVATE IN COUNTY STREETS FROM THE L.A. COUNTY ROAD DEPT. DISTRICT OFFICE NO. ... AND PAY A FEE TO THE COUNTY ENGINEER, ROOM 300, COUNTY ENGINEERING BUILDING, 100 WEST SECOND STREET OR ... ANTELOPE VALLEY ... REGIONAL OFFICE, SUFFICIENT TO COVER THE COST OF CONSTRUCTION INSPECTION AND RECORD PLANS. APPROVAL OF THIS PLAN BY THE COUNTY OF LOS ANGELES DOES NOT CONSTITUTE A REPRESENTATION AS TO THE ACCURACY OF THE LOCATION OF OR THE EXISTENCE OR NON-EXISTENCE OF ANY UNDERGROUND UTILITY PIPE, OR STRUCTURE WITHIN THE LIMITS OF THIS PROJECT. THIS NOTE APPLIES TO ALL PAGES. IF WORK IS TO BE DONE IN A STATE HIGHWAY, A PERMIT MUST BE OBTAINED FROM THE STATE OF CALIFORNIA, DIVISION OF HIGHWAYS, 126 SOUTH SPRING STREET, LOS ANGELES, CALIFORNIA.

COUNTY OF LOS ANGELES, CALIFORNIA
 JOHN A. LAMBE, COUNTY ENGINEER
 I. D. PARKHURST, CHIEF ENGINEER

APPROVED BY: *Ralph Schep* ASSISTANT SANITATION ENGINEER
 APPROVED BY: *I. D. Parkhurst* CHIEF ENGINEER

CHECKED BY: *McNide* 8-31-65
 REG. C. E. NO. 9406

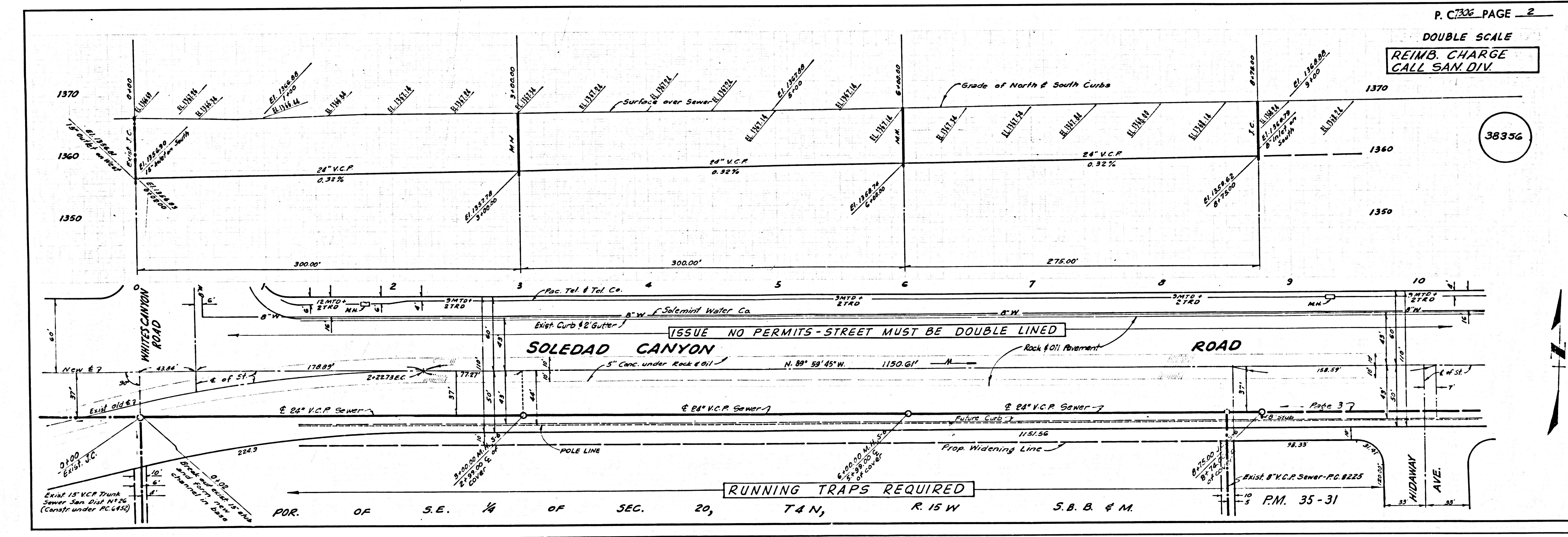
REVISIONS

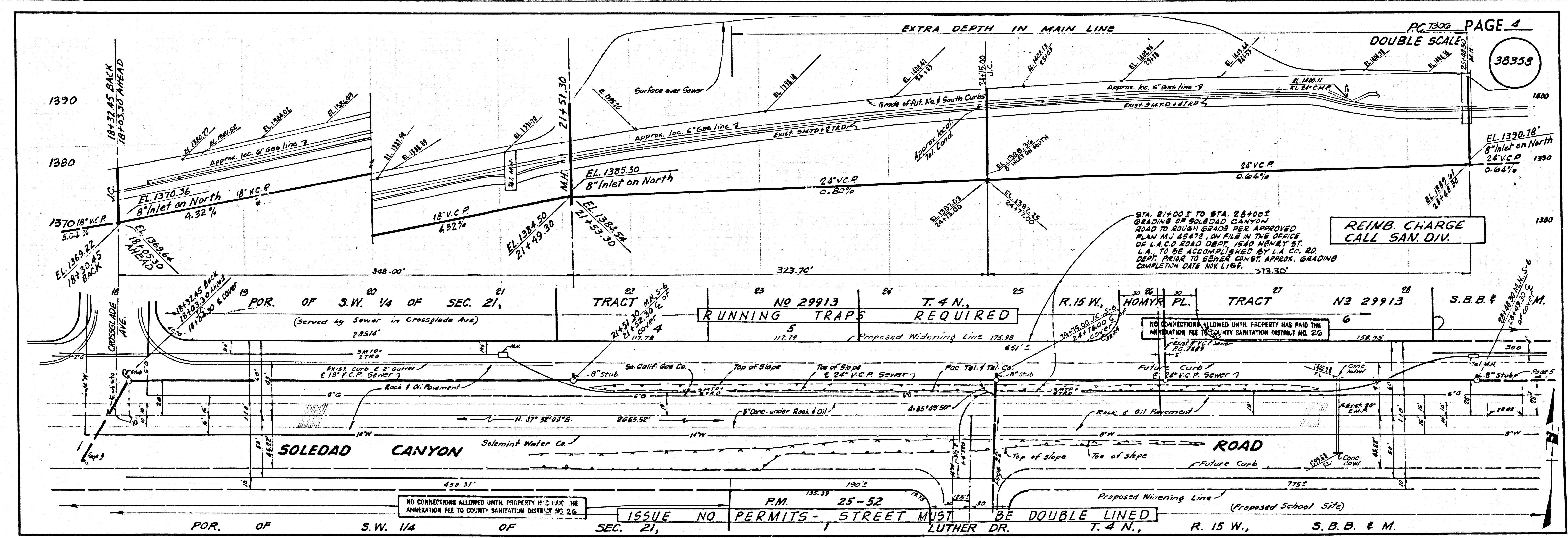
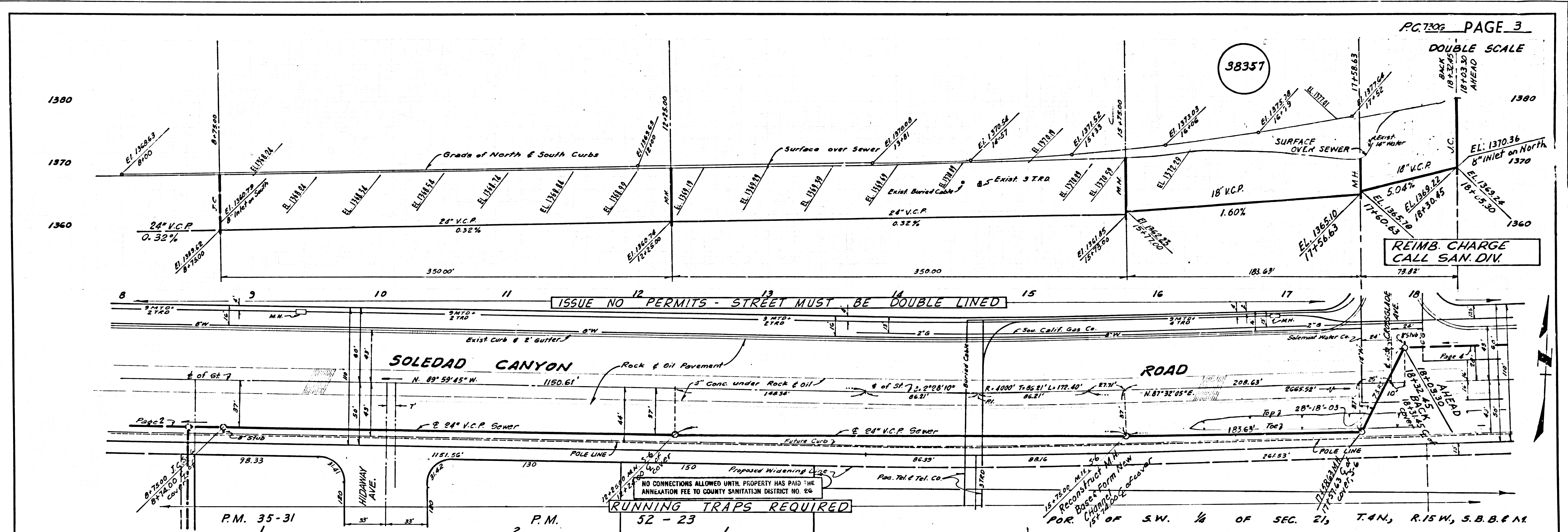
- VERTICAL ALIGNMENT AND PIPE SIZES REVISION THROUGHOUT VARIOUS PORTIONS OF MAIN LINE, ON SOLEDAD CANYON ROAD.
- ADDED STUD TO SOUTH AT STA. 24+75.

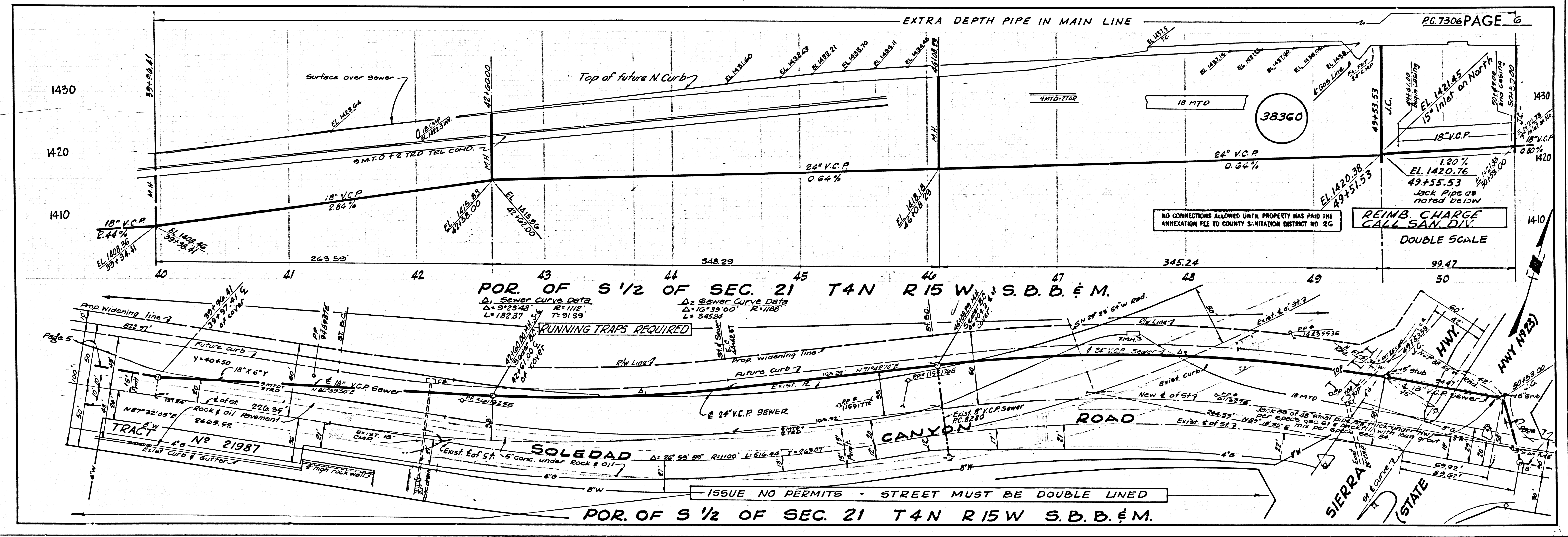
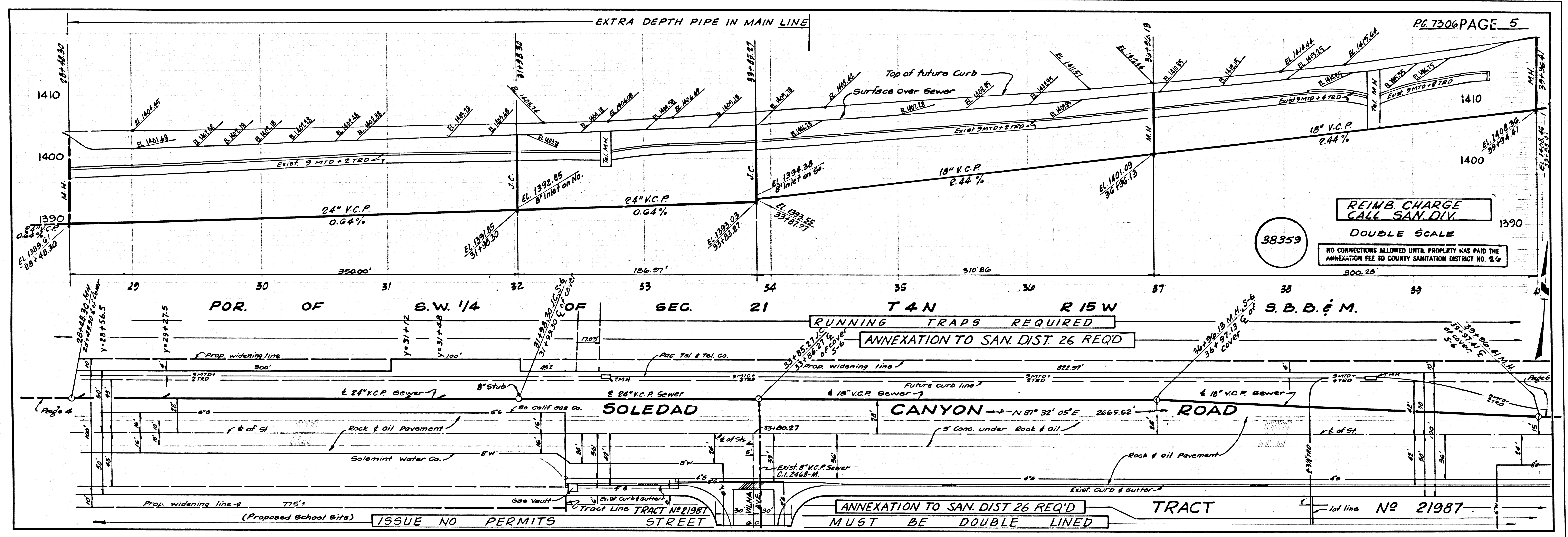
APPROVED
Ralph Schep
 COUNTY ENGINEER

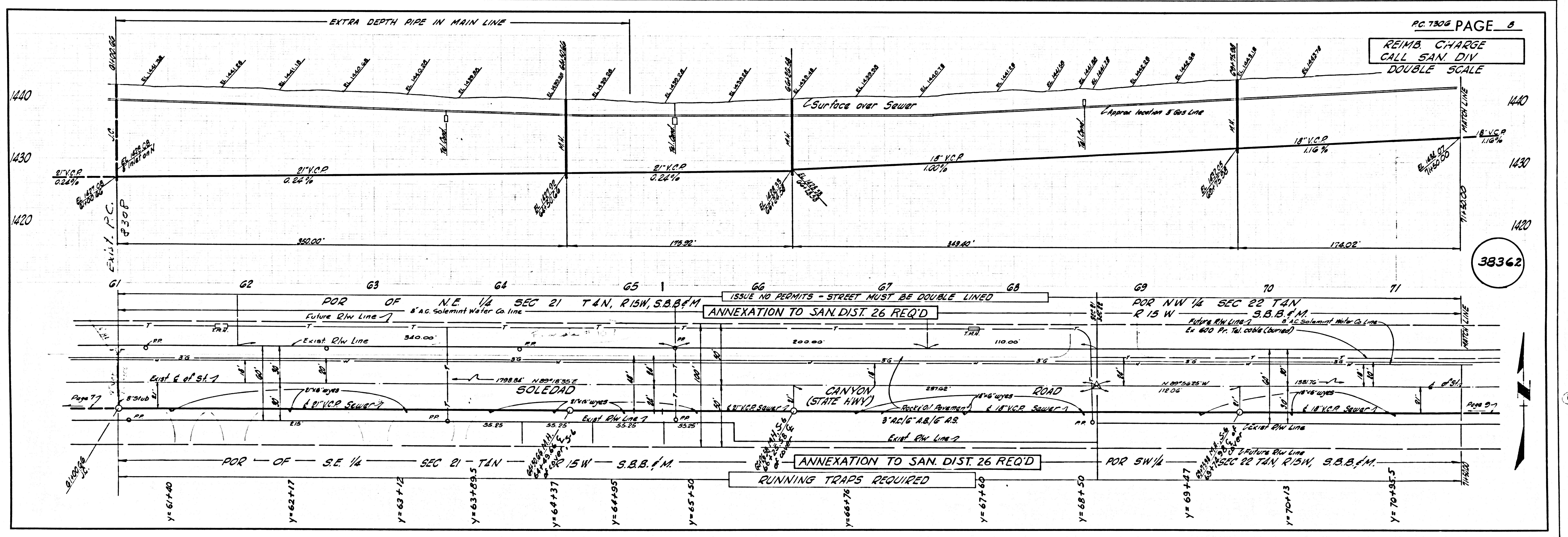
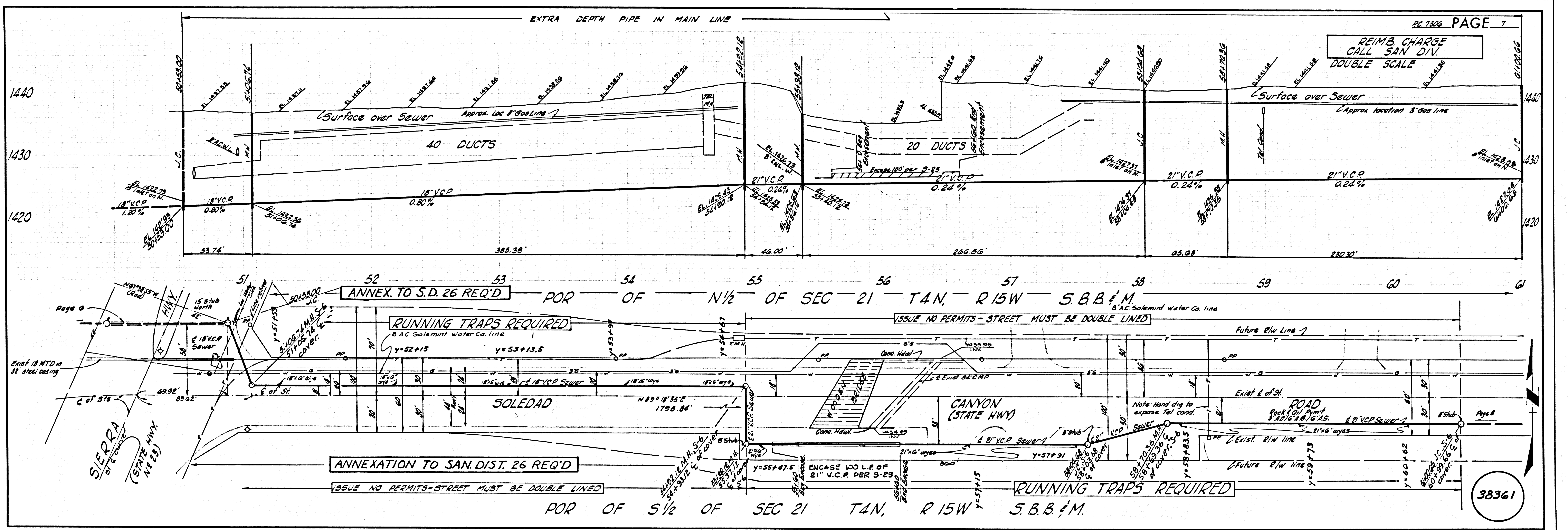
CHECKED BY: *R.E.E.* 8-15-65
 REG. C. E. NO. 1576

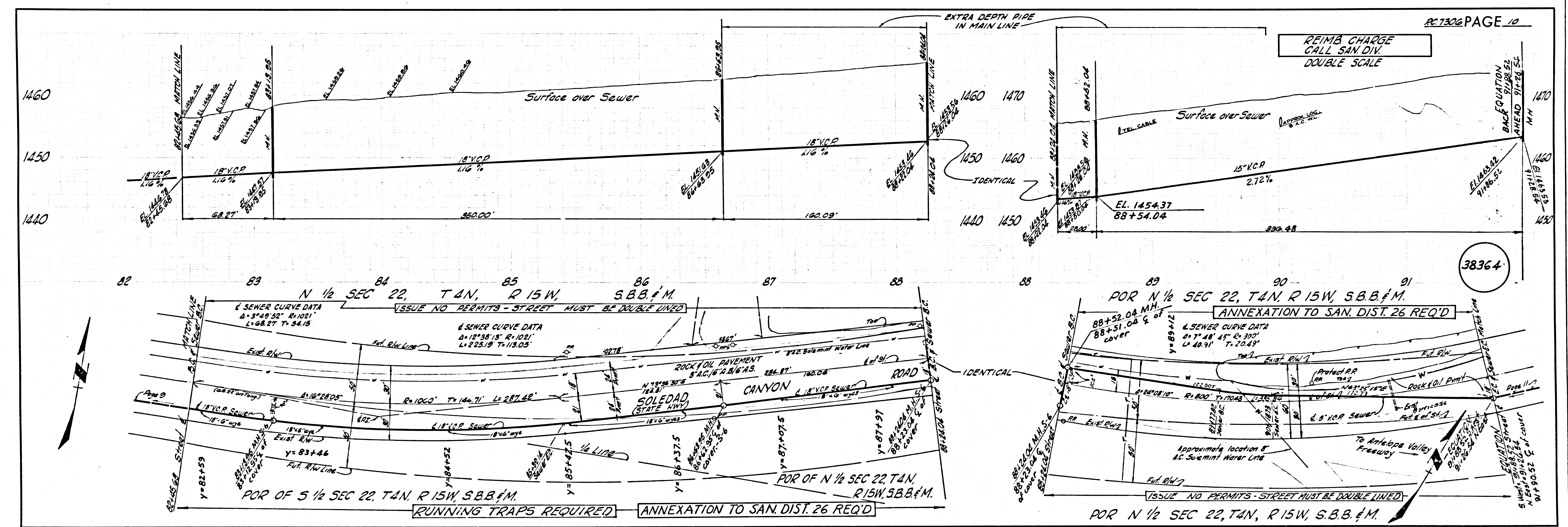
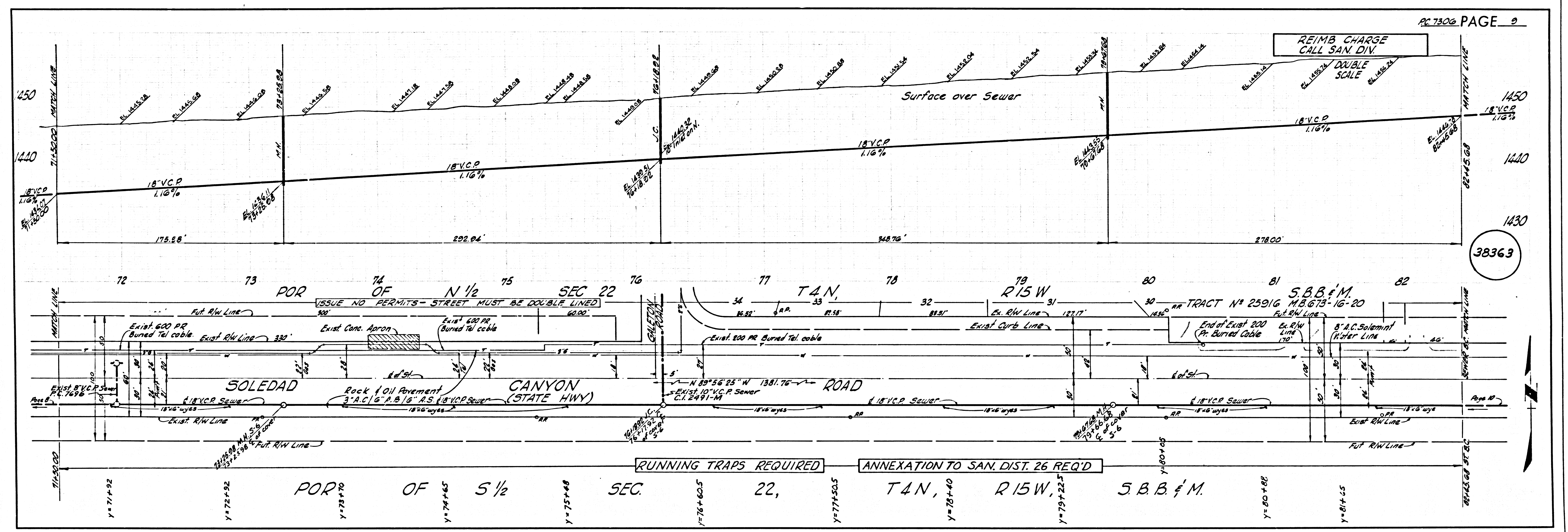
LA 0365.28

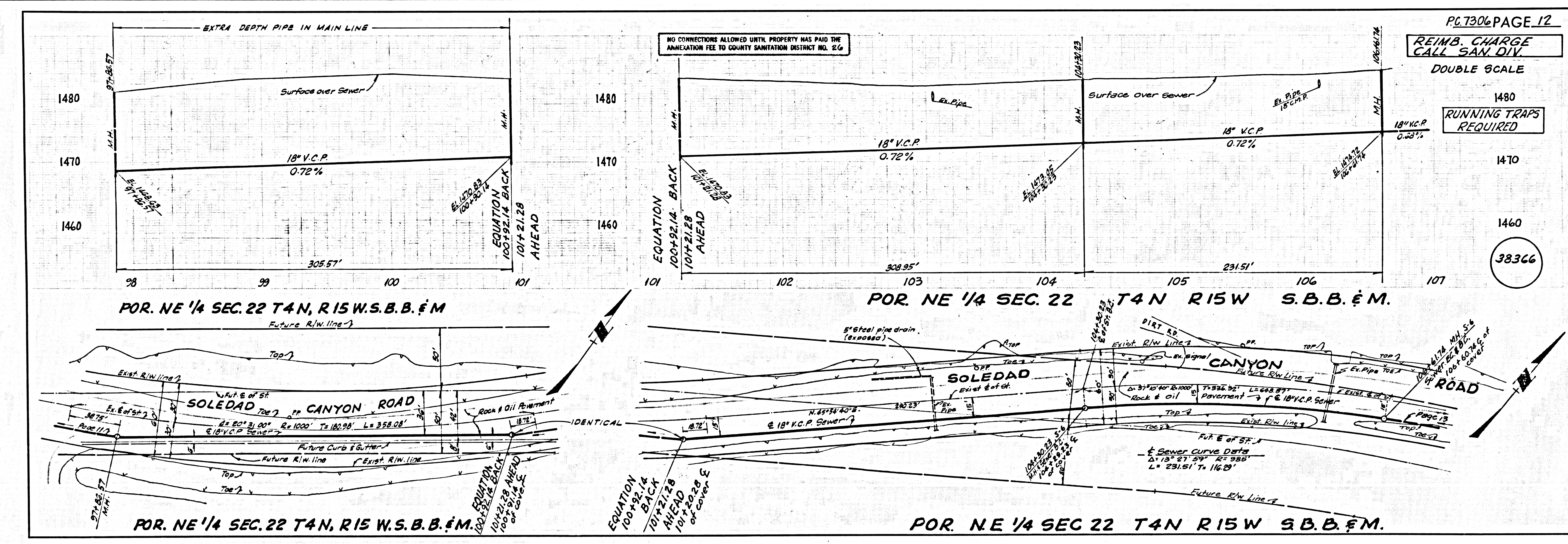
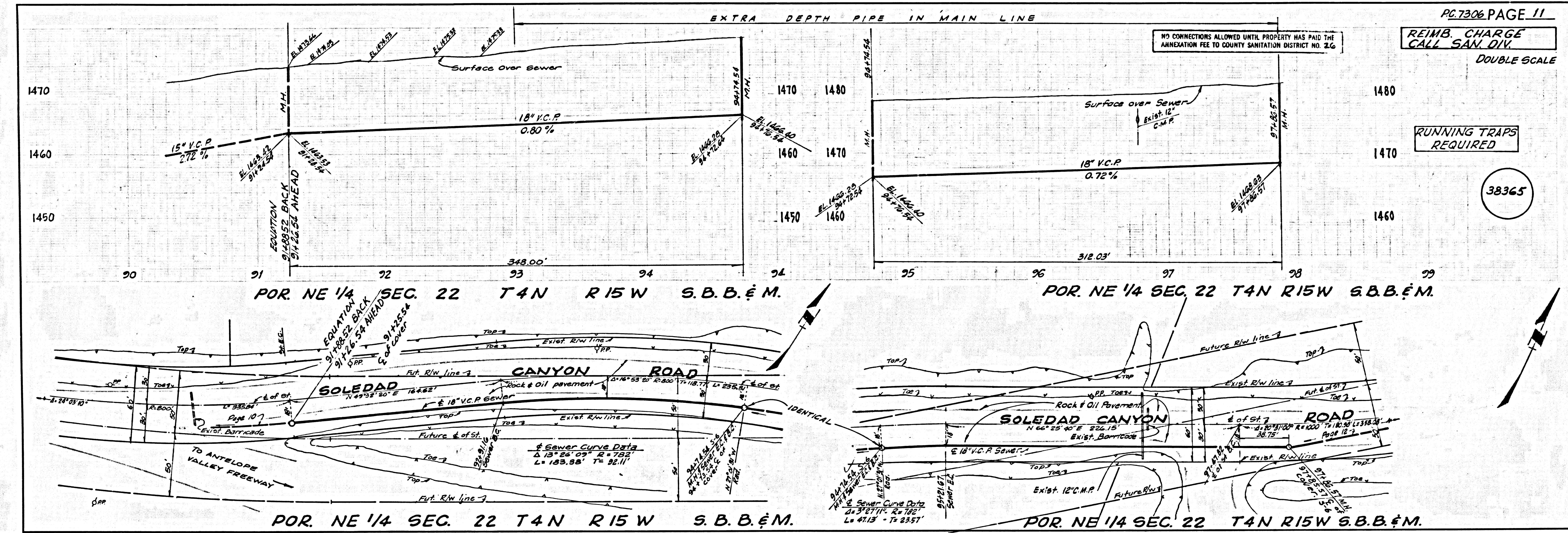


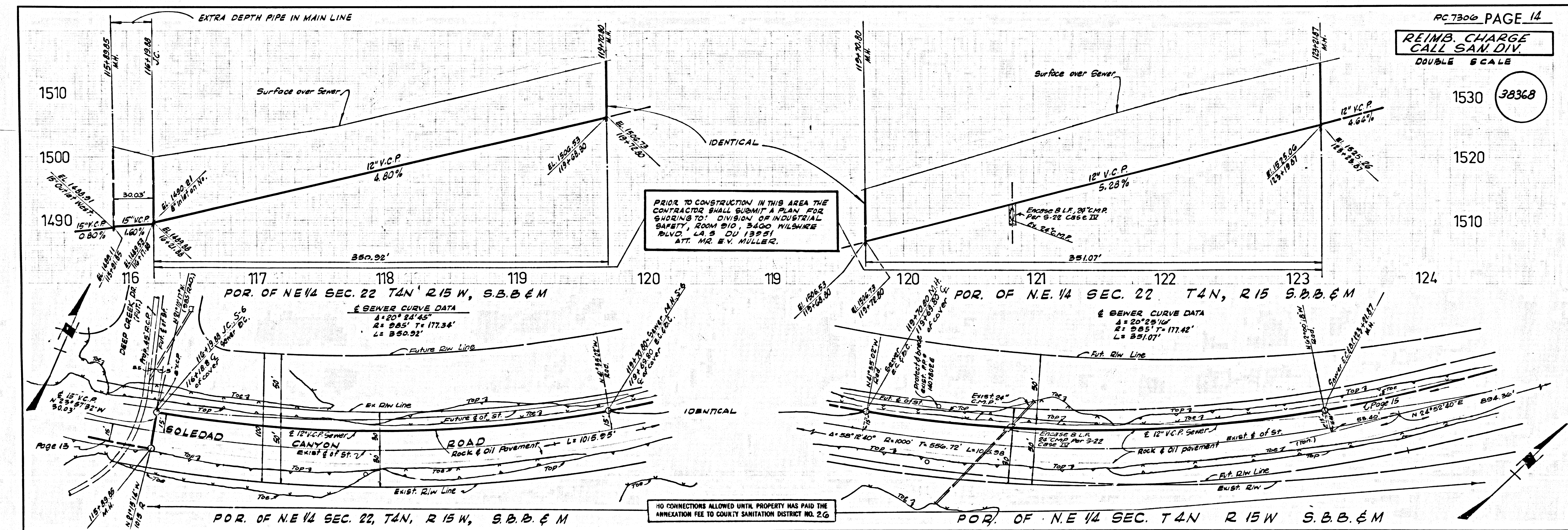
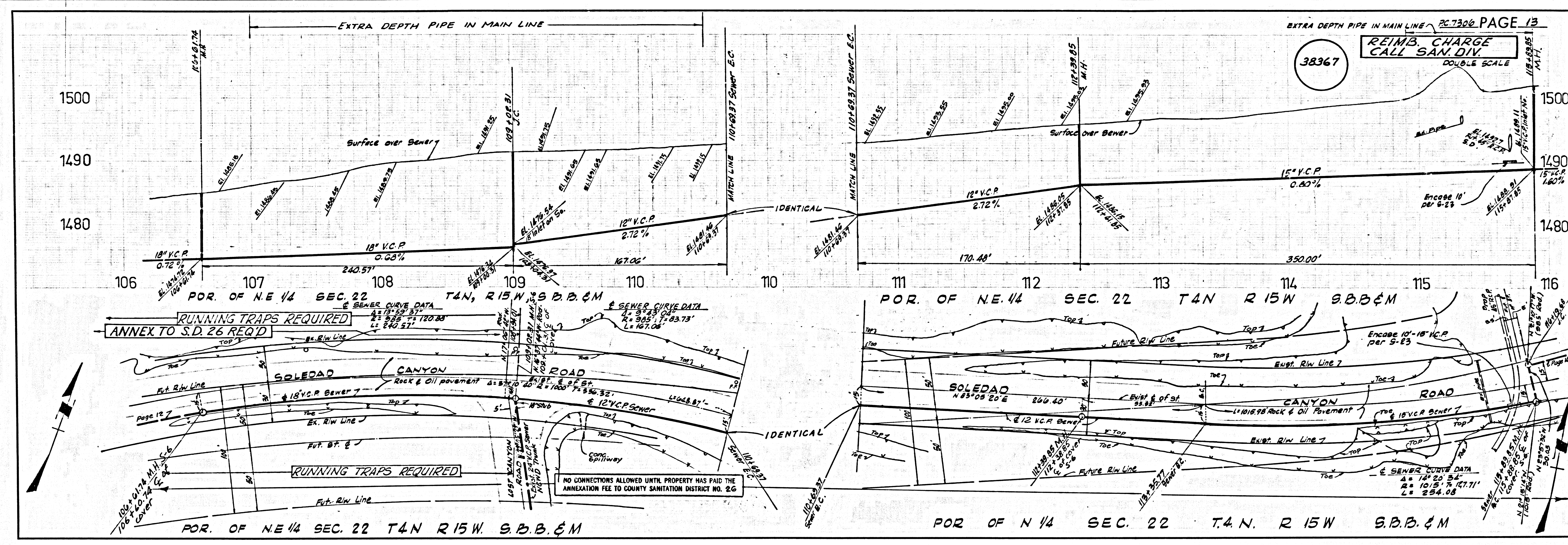


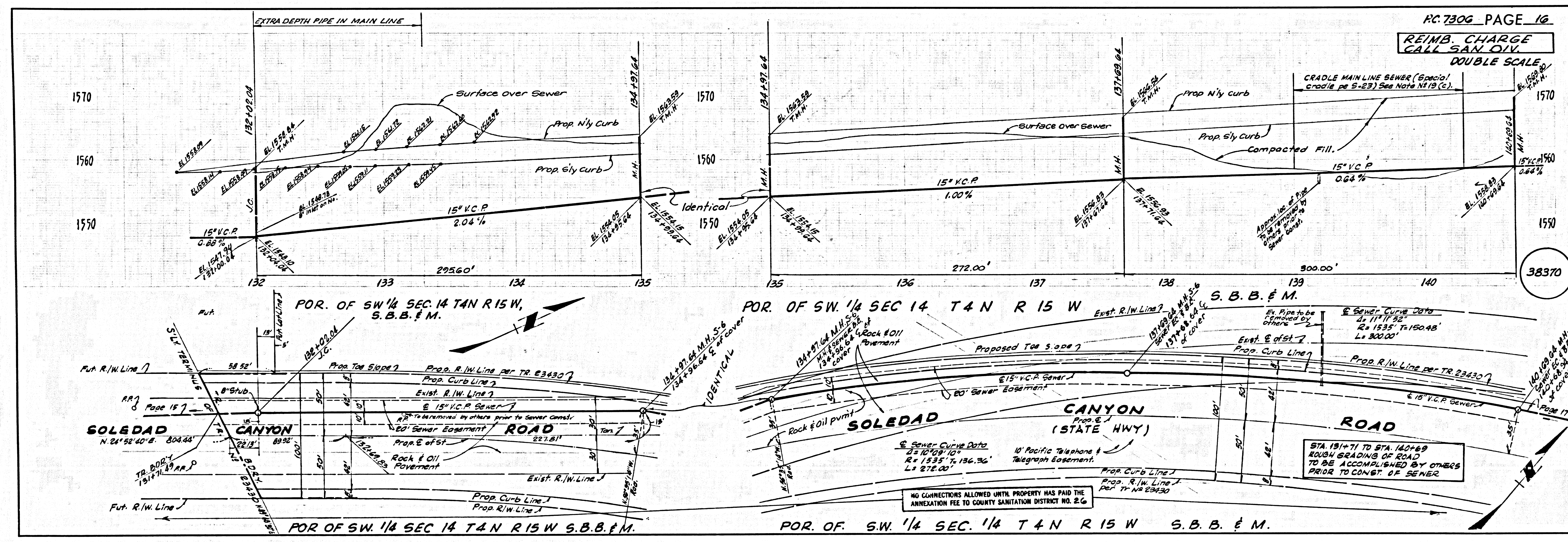
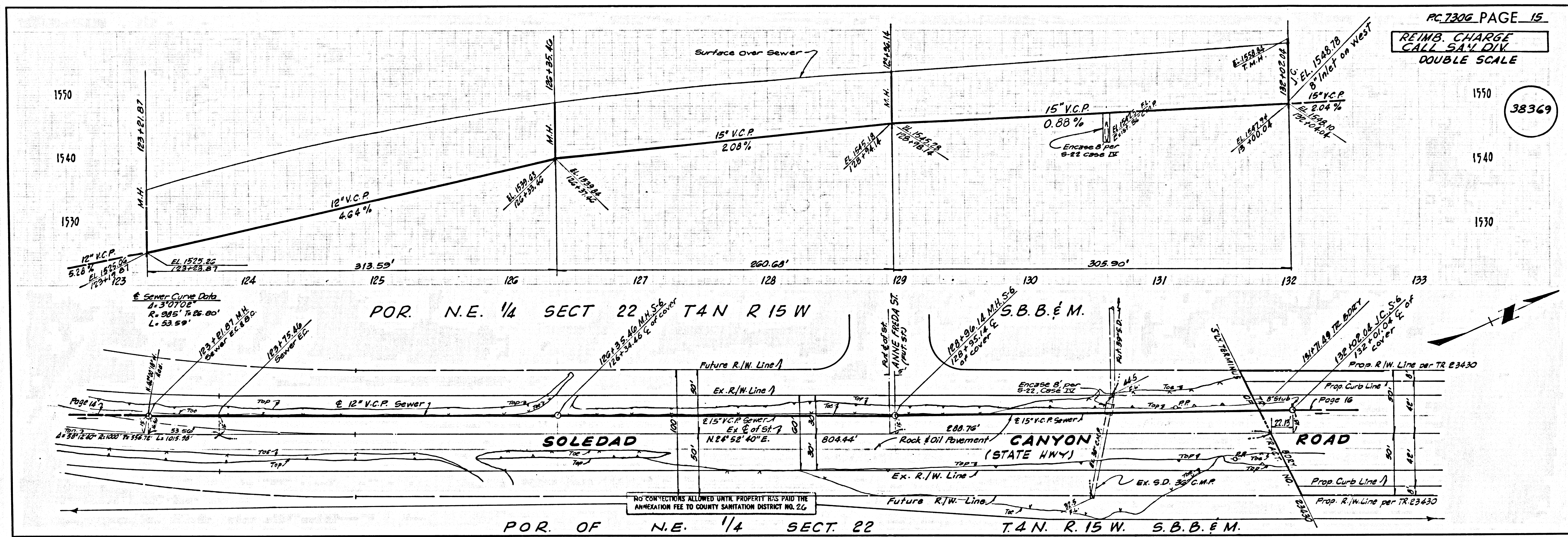






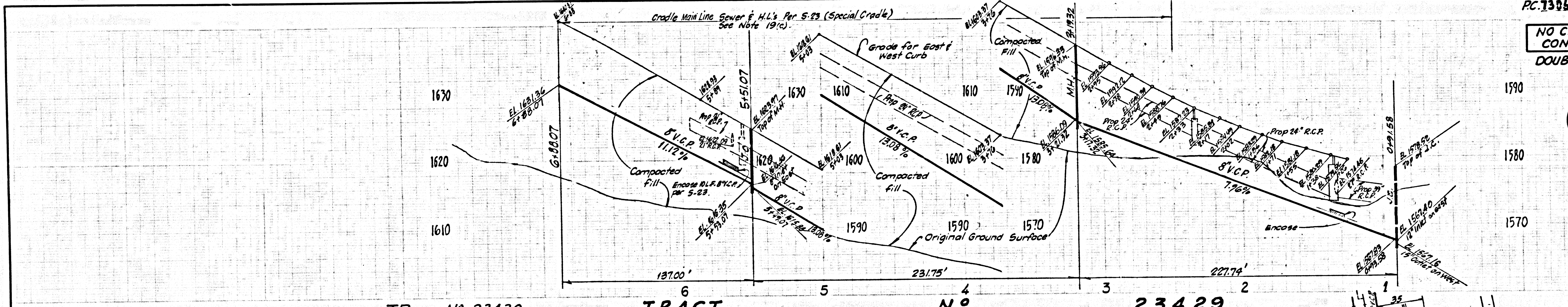




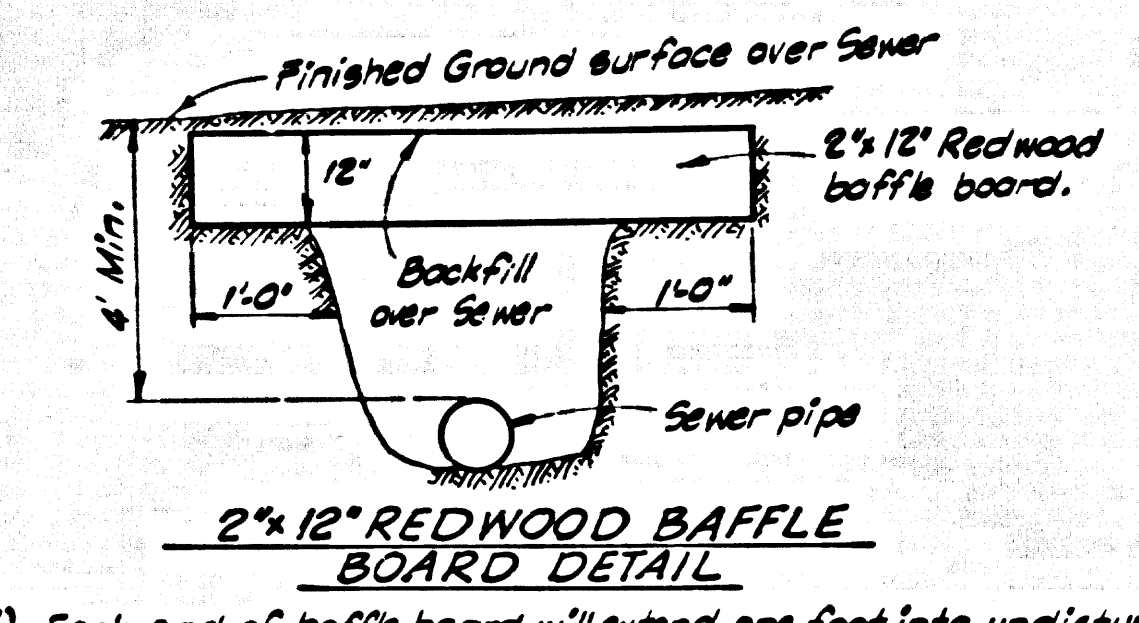


NO CHARGE FOR CONNECTIONS
DOUBLE SCALE

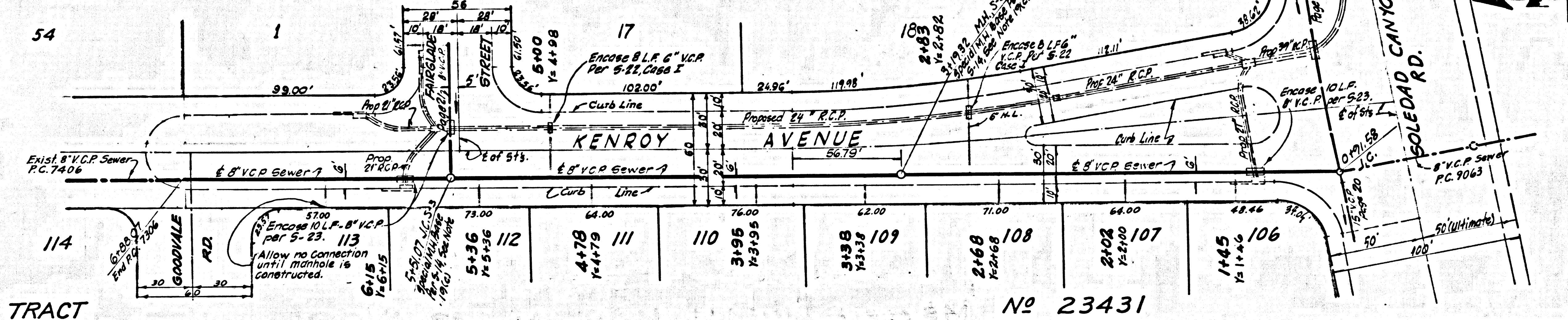
38373



TR. NO 23430 TRACT NO 23429



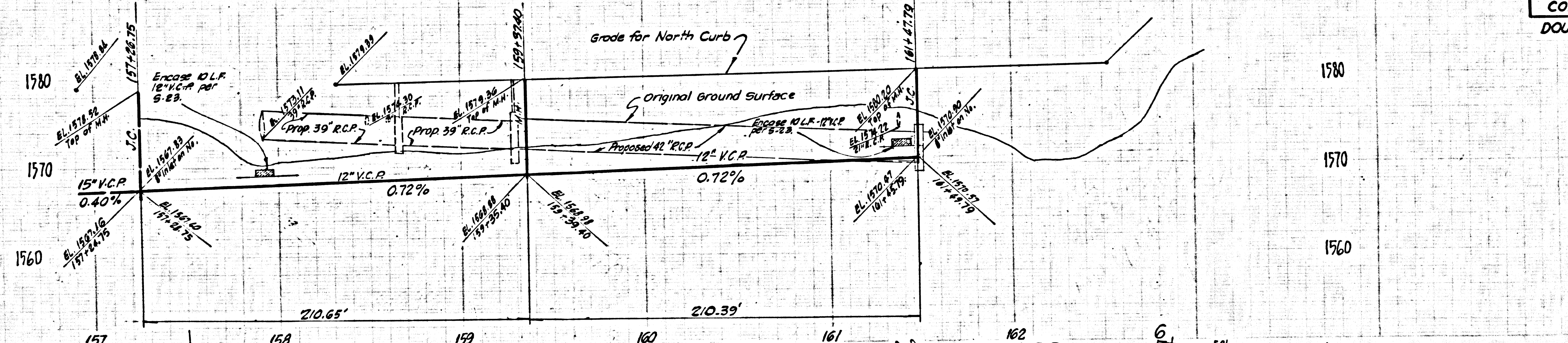
- 1) Each end of baffle board will extend one foot into undisturbed ground.
- 2) Baffles will be so spaced that the top of the lower baffle shall be level with the bottom of the upper baffle board.
- 3) The upper layer of the backfill to be 1 foot min. of top of soil. Top soil shall be tamped in place and planted with mustard weed seed and adequately watered until growth restored.



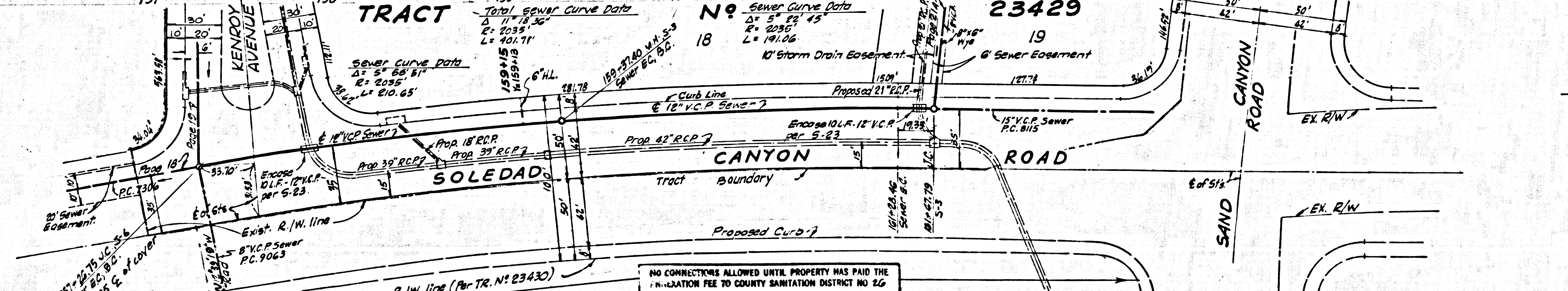
TRACT NO 23431

NO CHARGE FOR CONNECTIONS
DOUBLE SCALE

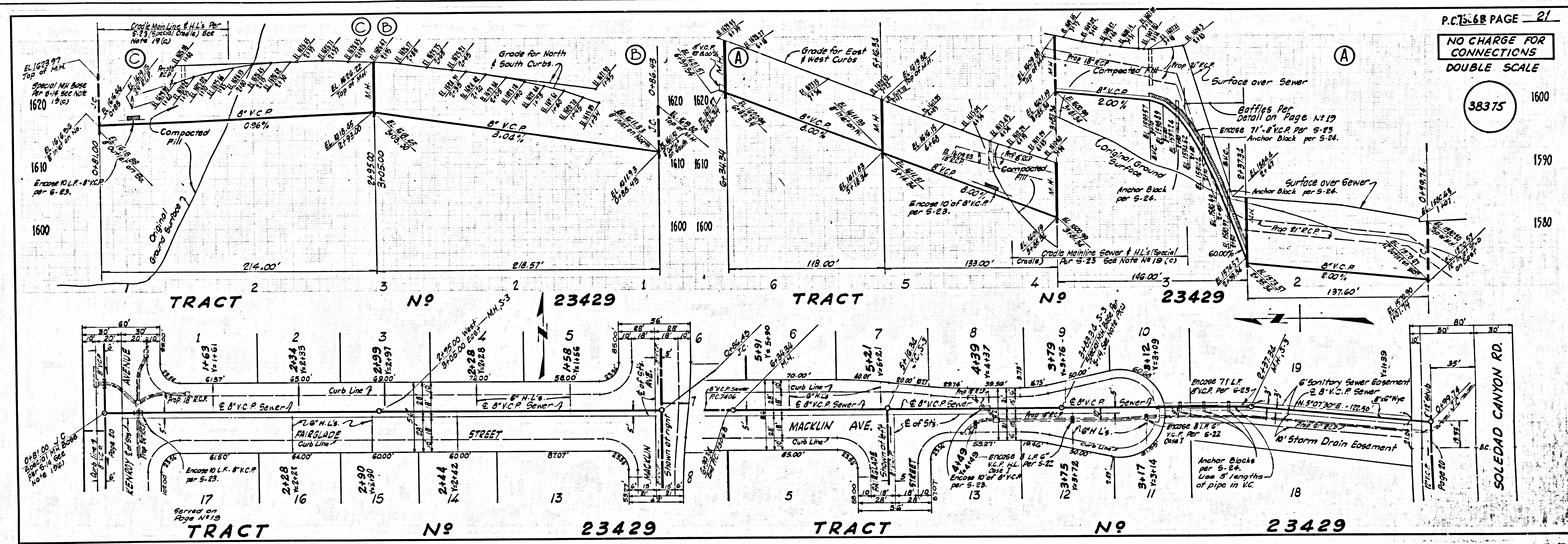
38374



TRACT NO 23429



SW 1/4 SEC. 14 T.4 N., R.15 W. S.B.B. & M.



P.C. 15.68 PAGE 21
 NO CHARGE FOR CONNECTIONS
 DOUBLE SCALE

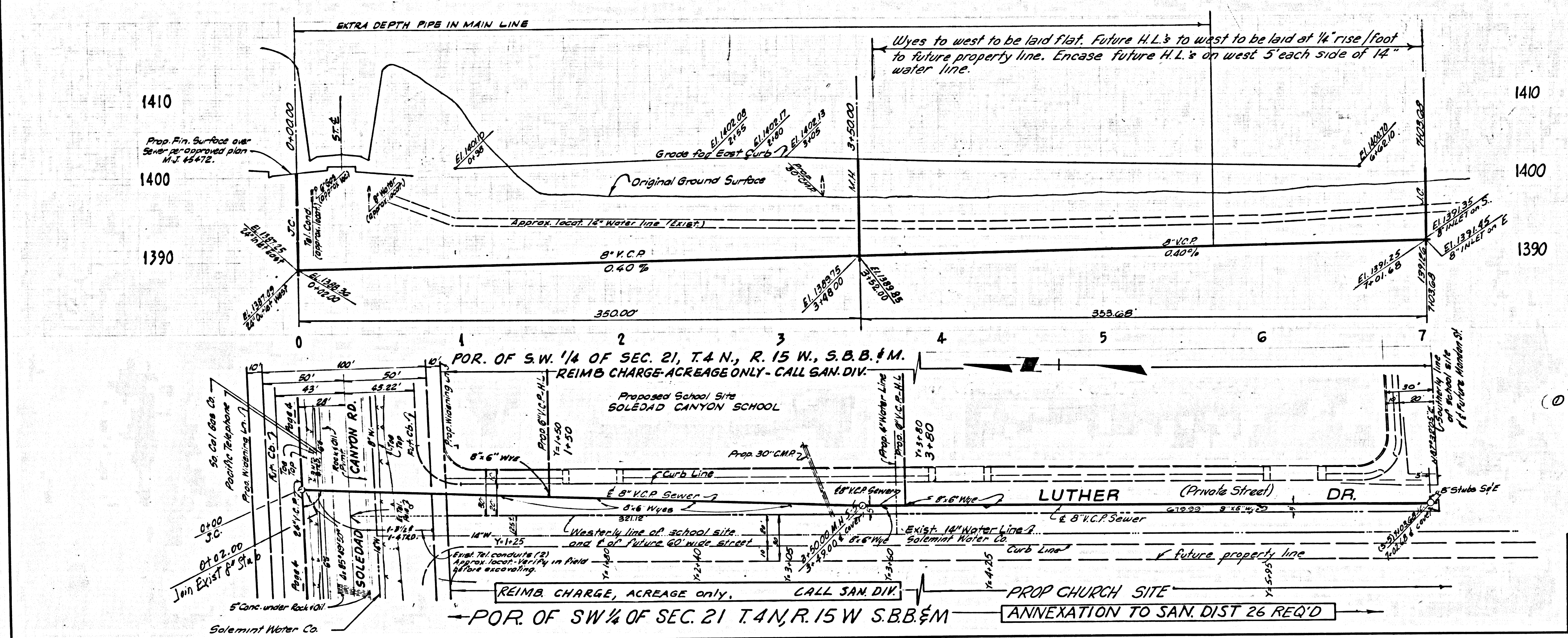
38375

1600
 1590
 1580

COLLECT CHARGES AS INDICATED

DOUBLE SCALE

38376



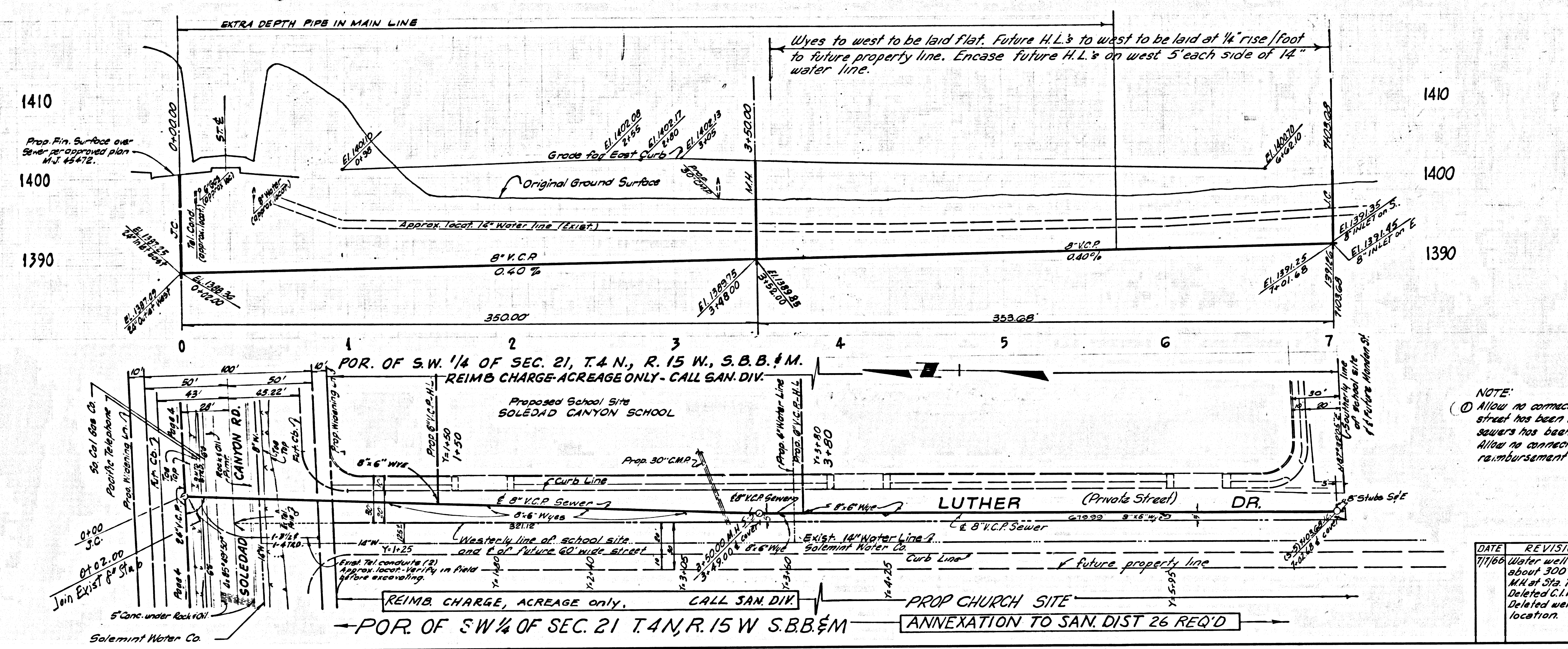
NOTE:
 (1) Allow no connections to sewer in Sulphur Springs Ave until street has been dedicated or a Right-of-Way for sanitary sewers has been granted to the County of Los Angeles. Allow no connections to sewer in Sulphur Springs Ave until reimbursement charge is collected.

DATE	REVISIONS	APPROVED
7/7/66	Water well found at about 300' south of M.N. at Sta. 7+03.68 Deleted C.I.P. permit Deleted well in approx location.	<i>[Signature]</i> 7/7/66

COLLECT CHARGES AS INDICATED

DOUBLE SCALE

38376



NOTE:
 (1) Allow no connections to sewer in Sulphur Springs Ave until street has been dedicated or a Right-of-Way for Sanitary sewers has been granted to the County of Los Angeles. Allow no connections to sewer in Sulphur Springs Ave until reimbursement charge is collected.

DATE	REVISIONS	APPROVED
7/7/66	Water well found at about 300' south of M.K. at Sta. 7+03.68. Deleted C.I.P. require. Deleted well in approx location.	P. J. [Signature] 7/7/66