

S.P.	STATE	FEDERAL PROJECT NO.	SHEET NO.	TOTAL SHEETS
7	CALIF.			

DIST.	COUNTY	ROUTE	SEC.	SHEET NO.	TOTAL SHEETS
07	LA	60			

Approved: *Anthony* Dist. Eng. Dist.

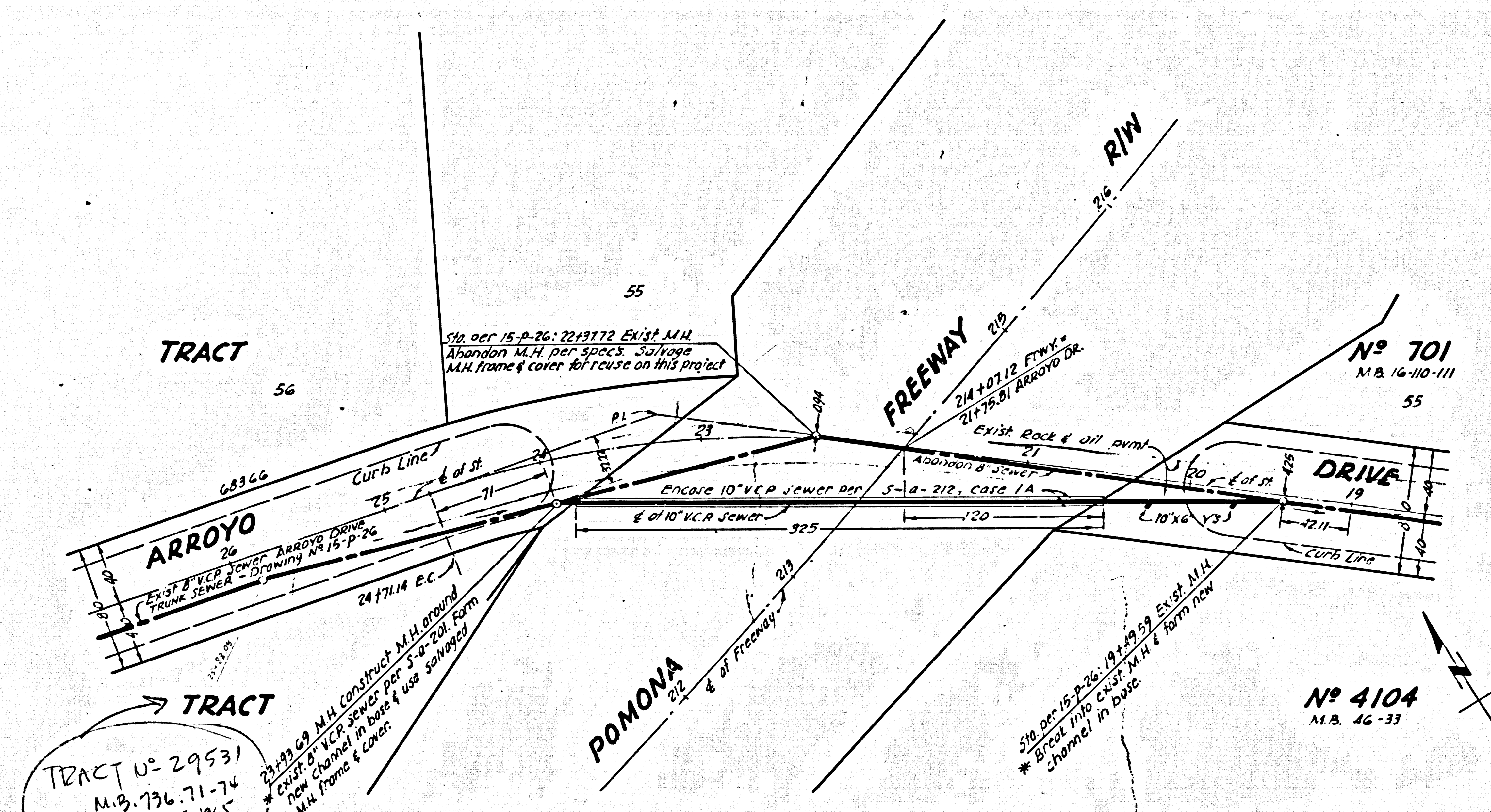
PC. 73:0  
Approved  
By: *J.D. Barkhurst*  
J.D. Barkhurst, Chief Engineer  
County Sanitation District #15  
OFFICE ENGINEER

NO CONNECTIONS FOR THE DISPOSAL OF INDUSTRIAL WASTES SHALL BE MADE TO SEWERS SHOWN ON THESE DRAWINGS WITHOUT WRITTEN PERMISSION FROM THE CHIEF ENGINEER AND GENERAL MANAGER OF THE COUNTY SANITATION DISTRICTS.

NO WORK SHALL BE DONE ON ANY EXISTING STRUCTURE UNLESS THE FINAL ACCEPTANCE OF THIS WORK BY THE COUNTY SANITATION DISTRICT (DHS 4281) SHALL BE OBTAINED IN ORDER THAT REQUIRED INSPECTION CAN BE MADE.

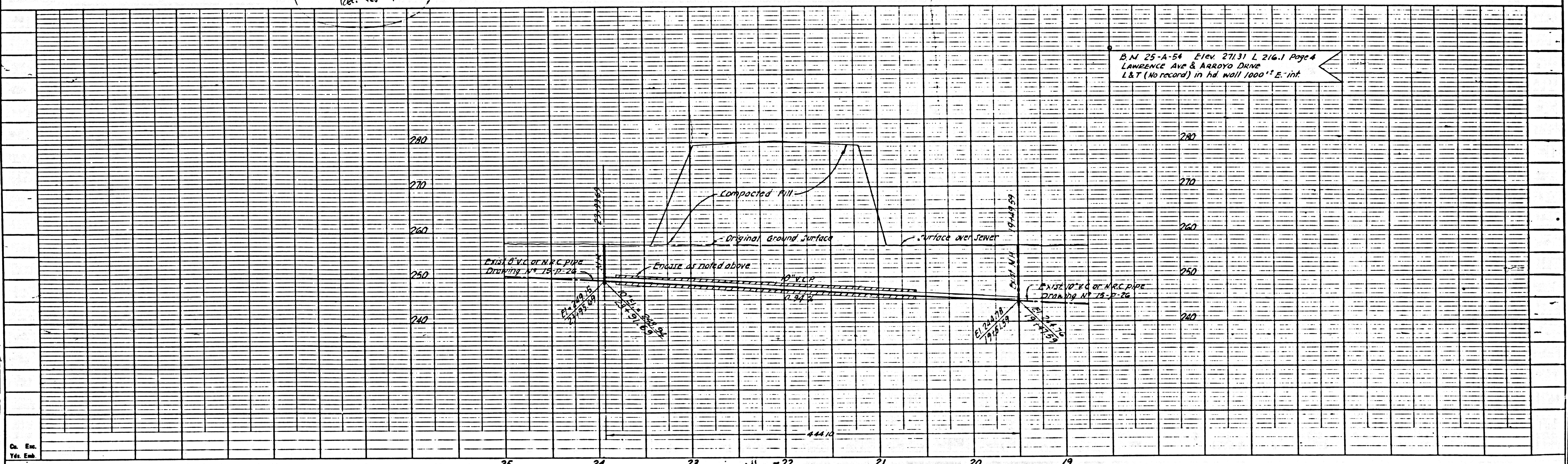
Notes:  
\*The Contractor shall maintain the flow in trunk sewer at all times during construction.  
\*All construction on Arroyo Drive Trunk Sewer shall be done in accordance with County Sanitation District's standard specifications.  
No work shall be done on the trunk sewer except in presence of representative of C.S.D.  
The Contractor shall notify Mr. Robert Powell at NE 63097 at least 48 hours prior to construction on existing trunk sewer.

DESIGNED BY: *W. Enquer*  
CHECKED BY: *W. MICHELL*



TRACT NO. 29531  
M.B. 736-71-74  
Rec. Feb 6, 1965  
22-29-69 M.H. Construct M.H. around  
Exist. 8\"/>

B.N. 25-A-54 Elev 271.31 L 216.1 Page 4  
LAWRENCE AVE & ARROYO DRIVE  
L&T (No record) in hd wall 1000' E. int.



Checked by: *g. endo*

Dr. Eng. Sta. 25 24 23 22 21 20 19  
G. ENDO 1/65 W.M. GRIFFIN 3/65 W.E. SCHAEFER 3/65

SEWER DETAILS