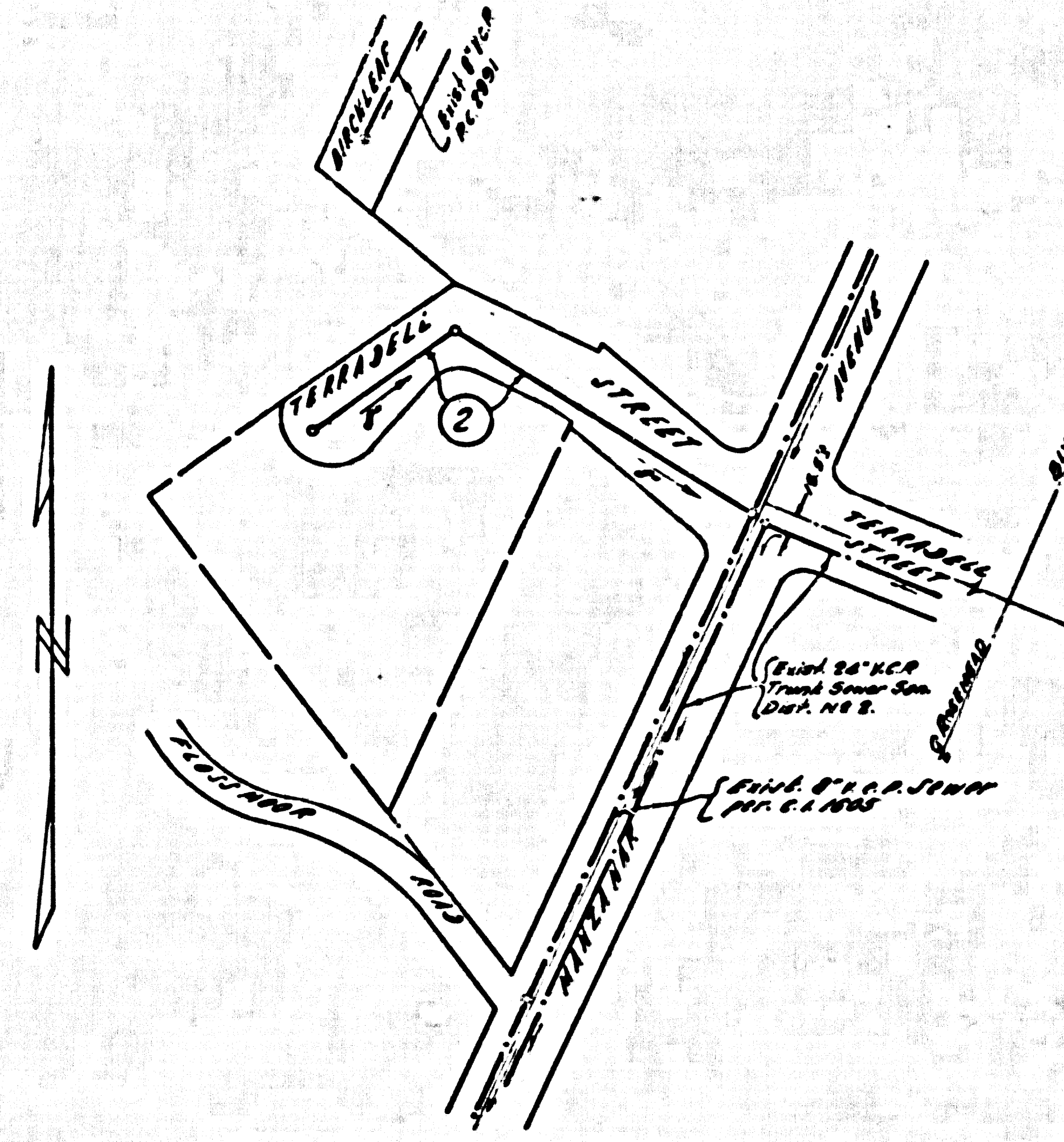


B.M. "C" ELEV. 145.700
 4 FT. IN NORTH-SOUTH DIRECTION FROM 225
 WEST 8th STREET, 4th. AND 5th. NORTH &
 TERRADELL ST. TO CORNER L.B. 150-151
 RIVERA QUAD. 19-55



INDEX MAP
 P.C. 7313
 TERRADELL STREET
 SCALE 1" = 100'

PICO RIVERA BLDG. DIST. NO. 11.01

- NOTES
1. PROPERTY STAKES ON THE PROPERTY LINE OR PROPERTY LINES PRODUCED AT RIGHT ANGLES TO THE SEWER LINE AT THE CENTER LINE OF EACH MANHOLE.
 2. NO REPRESENTATIVE OF THE CITY ENGINEER WILL SURVEY OR LAY OUT ANY PORTION OF THE WORK.
 3. THE PRIVATE ENGINEER SHALL FURNISH THE CITY ENGINEER WITH GRADE SHEETS AND STATIONING FOR ALL HOUSE LATERALS AND Y BRANCHES AND SHALL PROVIDE STAKES FOR THEM AT THEIR PROPER LOCATIONS WITH STATIONING PLAINLY MARKED. ALL HOUSE LATERALS SHALL BE CONSTRUCTED BY A SEPARATE ARRANGEMENT AT RIGHT ANGLES FROM THE MAIN LINE SEWER EXCEPT AS SHOWN ON THE PLANS. HOUSE LATERALS FROM CHIMNEYS SHALL NOT HAVE AN ANGLE OF LESS THAN 45° WITH THE MAIN LINE SEWER. ANY CHANGE IN ALIGNMENT SHALL BE REQUESTED BY WRITING BY THE PRIVATE ENGINEER.
 4. THE PRIVATE ENGINEER SHALL FURNISH THE HOUSE LATERAL DEPTH AS THE PROPERTY LINE BELOW THE TOP OF CURB ELEVATION FOR EACH HOUSE LATERAL ON THE GRADE SHEET.
 5. NO SEWERAGE SHALL BE MADE IN THESE PLANS WITHOUT THE APPROVAL OF THE CITY ENGINEER.
 6. THE CONTRACTOR SHALL NOTIFY THE CONSTRUCTION DIVISION BY TELEPHONE, HARBOR 9-4742, EXT. 2641, AT LEAST TWENTY-FOUR HOURS BEFORE STARTING ANY WORK UNDER THIS CONTRACT.
 7. MANHOLES SHALL BE BRICK SEWER STRUCTURES FOR 8" S. PARCELS CONCRETE MANHOLES FOR 8" S. OR 8" S. MAY BE USED AS AN ALTERNATE IN LOCATIONS APPROVED BY THE CITY ENGINEER.
 8. USE STANDARD MANHOLE FRAMES AND COVERS, 8" S., EXCEPT AS NOTED.
 9. MANHOLES FOR IN UNIMPROVED AREAS MAY BE IN USE BEFORE ANY FINISHED GRADE.
 10. USE FIVE STRENGTH PIPE ALL PIPE IS STANDARD PIPE EXCEPT AS NOTED.
 11. USE MECHANICAL COMPRESSION JOINTS FOR ALL V.C.P. JOINTS PER SPEC. SEC. 14, 15 & 16.
 12. ALL STATE AND LOCAL TRENCH SAFETY ORDERS WILL BE RIGIDLY ENFORCED.
 13. IF A POWER POLE IS WITHIN THREE FEET OF THE SEWER, THE SEWER SHALL BE ENCASED, PER 8-25, TWO FEET ON EACH SIDE FROM THE POINT OF INTERFERENCE.
 14. IF DURING THE COURSE OF CONSTRUCTION IT IS DETERMINED THAT THERE IS LESS THAN FOUR FEET OF COVER OVER THE TOP OF A MAIN LINE OR HOUSE LATERAL V.C.P. SEWER WHICH IS NOT INDICATED ON THE PLANS, THE PIPE SHALL BE ENCASED PER 8-25, UNLESS OTHERWISE APPROVED BY THE CITY ENGINEER.
 15. HOUSE LATERALS TO BE CONSTRUCTED WITHIN PROPERTY LINE... 6" S. PER BELOW CURB GRADE EXCEPT AS NOTED.
 16. REPAIR ALL TRENCHES WITHIN PAVED AREAS TO MEET L.A. COUNTY ROAD DEPT. OR CALIFORNIA STATE HIGHWAY BROWNSHAW'S REQUIREMENTS WITHIN PAVED AREAS TO MEET L.A. COUNTY ROAD DEPT. OR CALIFORNIA STATE HIGHWAY BROWNSHAW'S REQUIREMENTS.
 17. FOR ALLOWABLE LEAKS, USE FORMULA NO. 2, SPEC. SEC. 84.
 18. BEFORE CONSTRUCTION IS STARTED, THE CONTRACTOR SHALL ARRANGE WITH THE CITY OF PICO RIVERA FOR TRAFFIC CONTROL AND SHALL POST SIGNAGE SUFFICIENT TO COVER THE COST OF ENFORCING SAID ARRANGEMENT.
 19. CONTRACTOR SHALL MAINTAIN ALL EXISTING SERVICES TO HOME OWNERS AT NO CHARGE TO THE PROPERTY OWNER'S BEING SERVED AND SHALL MAINTAIN SERVICE TO ALL EXISTING CONNECTIONS AT ALL TIMES.

NO CONNECTIONS FOR THE DISPOSAL OF INDUSTRIAL WASTES SHALL BE MADE TO SEWERS SHOWN ON THESE DRAWINGS WITHOUT WRITTEN PERMISSION FROM THE CHIEF ENGINEER AND GENERAL MANAGER OF THE COUNTY SANITATION DISTRICTS.

COLLECT CHARGES AS INDICATED
 E. W. Smith

REVIEWED BY: J. D. Parkhurst 4-22-66
 CITY OF PICO RIVERA

TERRADELL STREET

PRIVATE CONTRACT NO. 7313

W.S. 36
 1 SHEET 2 PAGES

38328

SCALE: HORIZ. 1" = 40' VERT. 1" = 4'

MARCH, 1965

THOMSEN ENGINEERING, INC.

Hans C. Thomsen
 REG. C. E. NO. 8866

FOR LEGEND SEE PLAN NO. S-1

NOTES

GRADE TO WHICH THIS IMPROVEMENT IS TO BE CONSTRUCTED ARE SHOWN ON PLANS AND PROFILE. GRADE POINTS FOR TOP OF CURB, CENTER LINE OF STREETS, OR CENTER LINE OF ALLEYS ARE SHOWN BY CIRCLES ON PROFILE. AT ALL POINTS BETWEEN DESIGNATED POINTS THE GRADE SHALL BE ESTABLISHED SO AS TO CONFORM TO A STRAIGHT LINE DRAWN BETWEEN SAID DESIGNATED POINTS. ELEVATIONS ARE IN FEET ABOVE U.S.C. & G.S. 1916 DATUM OF 1929.

THE DRAWING AND THE DATA HEREON ARE HEREBY MADE A PART OF THE SPECIFICATIONS. WORK SHALL BE CONSTRUCTED ACCORDING TO STANDARD SPECIFICATIONS DATED MAY 15, 1962, ON FILE IN THE OFFICE OF THE CITY ENGINEER AND THE DATA HEREON ARE HEREBY MADE A PART OF THE SPECIFICATIONS.

WORK SHALL BE DONE IN ACCORDANCE WITH THE CITY OF PICO RIVERA'S STANDARD SPECIFICATIONS FOR THE L.A. COUNTY ROAD DEPT., DISTRICT OFFICE NO. 4, AND MAKE A DEPOSIT WITH THE CITY OF PICO RIVERA'S PUBLIC WORKS DIVISION SUFFICIENT TO COVER THE COST OF CONSTRUCTION INSPECTION AND PROVISION PLANS.

APPROVAL OF THIS PLAN BY THE CITY OF PICO RIVERA DOES NOT CONSTITUTE A REPRESENTATION AS TO THE ACCURACY OF THE LOCATION OR OF THE EXISTENCE OR NON-EXISTENCE OF ANY UNRECORDED UTILITY PIPE, OR STRUCTURE WITHIN THE LIMITS OF THIS PROJECT. THIS NOTE APPLIES TO ALL PAGES.

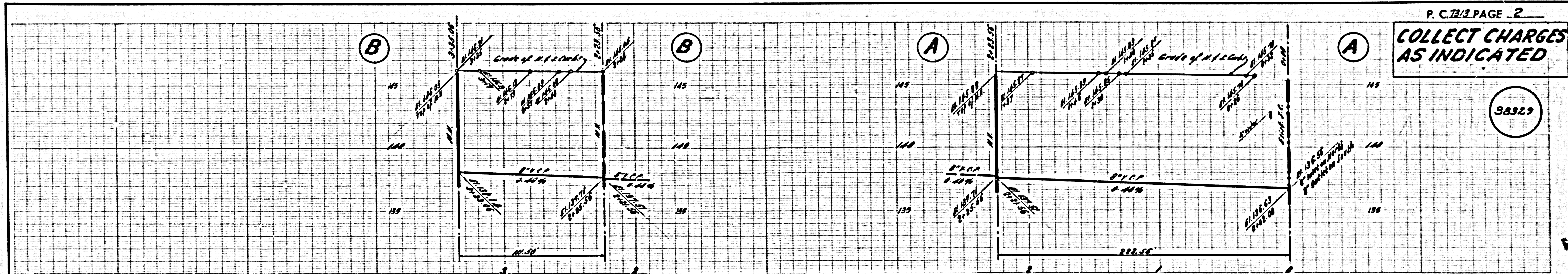
IF WORK IS TO BE DONE BY A STATE HIGHWAY, A PERMIT MUST BE OBTAINED FROM THE STATE OF CALIFORNIA, DIVISION OF HIGHWAYS, 120 SOUTH BRIDGE STREET, LOS ANGELES, CALIFORNIA.

CITY OF PICO RIVERA, CALIFORNIA
 JOHN A. LAMBIE, CITY ENGINEER J. D. PARKHURST, CHIEF ENGINEER

APPROVED BY: [Signature] APPROVED BY: [Signature]

SUBMITTED BY: [Signature] CHECKED BY: [Signature]

NO. C.E. NO. 12731



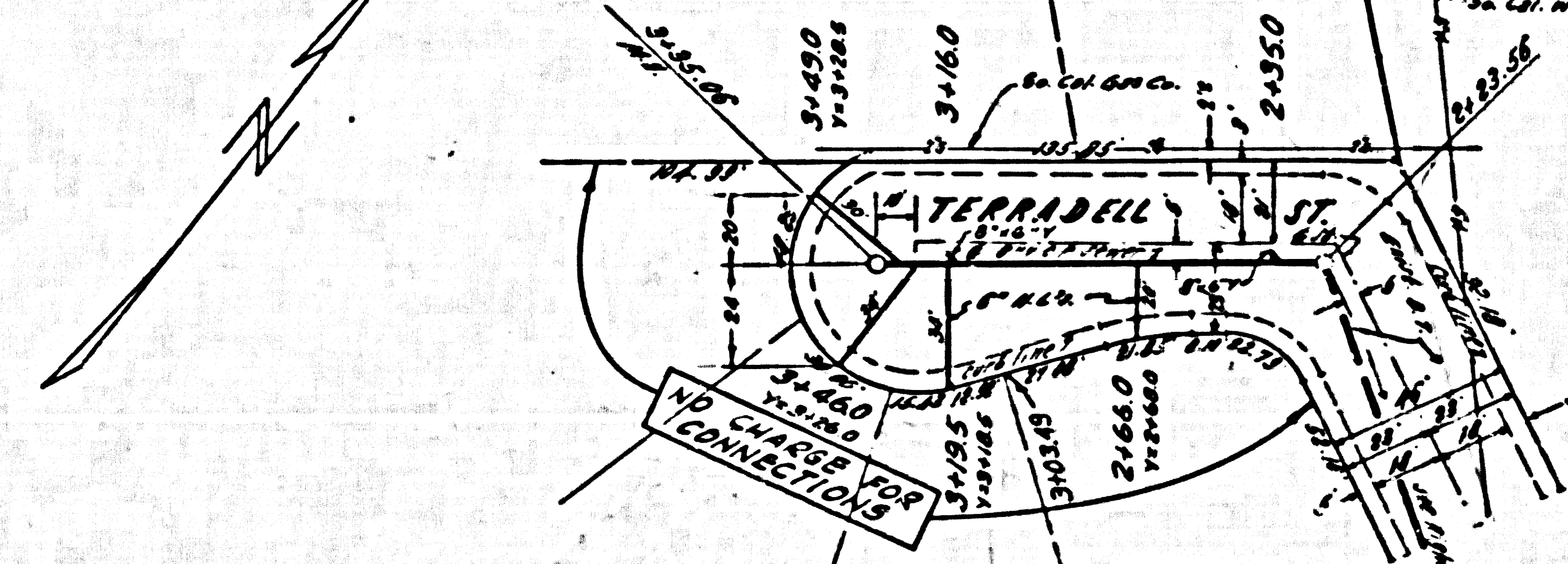
COLLECT CHARGES AS INDICATED

38329

RANCHO SANTA GERTRUDES
 PAT. BK. 1 P.G. 156-158

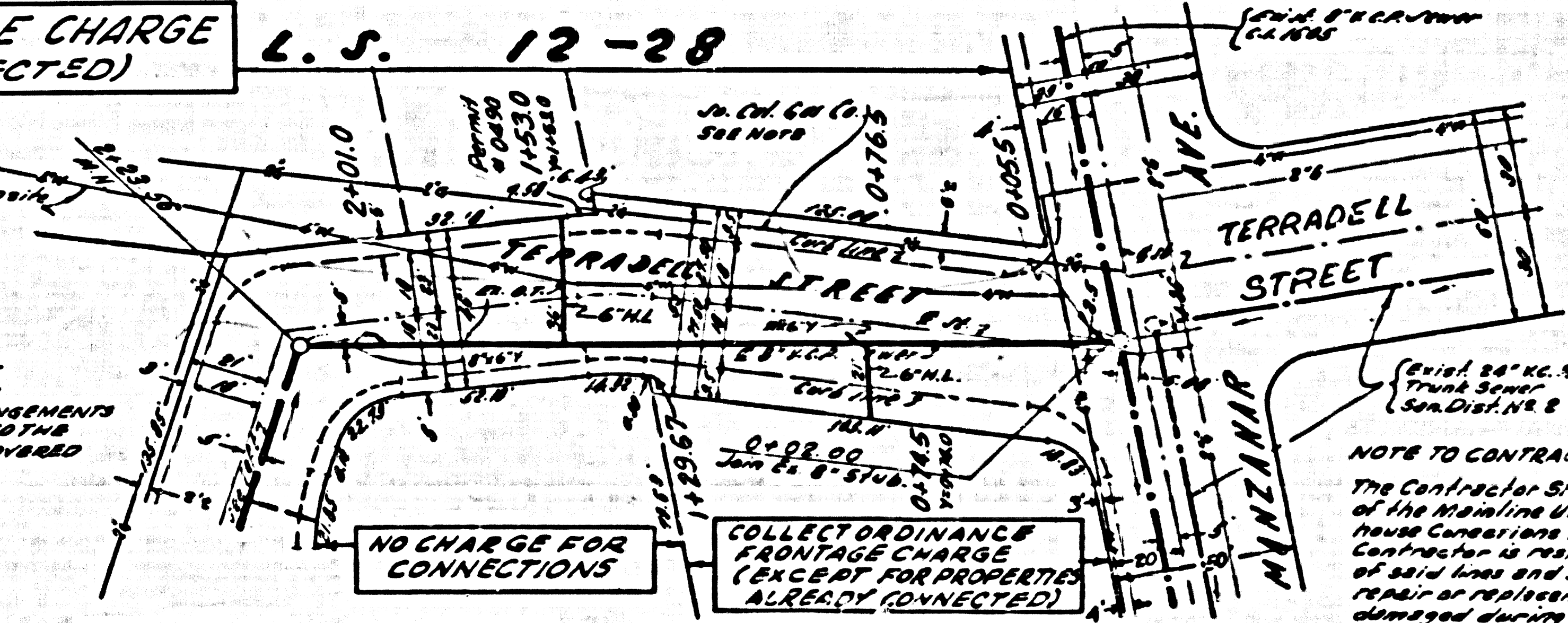
COLLECT ORDINANCE FRONTAGE CHARGE
 (EXCEPT PROPERTY ALREADY CONNECTED)

L.S. 12-28



RANCHO SANTA GERTRUDES
 PAT. BK. 1 P.G. 156-158

NOTES
 THESE ARE EXISTING PRIVATE SEWERS OF UNKNOWN DEPTH AND LOCATION WITHIN THE LIMITS OF THIS IMPROVEMENT. ARRANGEMENTS MUST BE MADE TO DISCONNECT THESE LINES TO THE PROPOSED SEWER MAIN AS THEY ARE UNCOVERED DURING EXCAVATION.



RANCHO SANTA GERTRUDES
 PAT. BK. 1 P.G. 156-158

NOTE TO CONTRACTOR
 The Contractor shall verify the location of the existing utilities shown and any other connections that may exist. The Contractor is responsible for the protection of any lines that are shown on the plans. The repair or replacement of any structures damaged during the construction of the sewer shown on these plans.