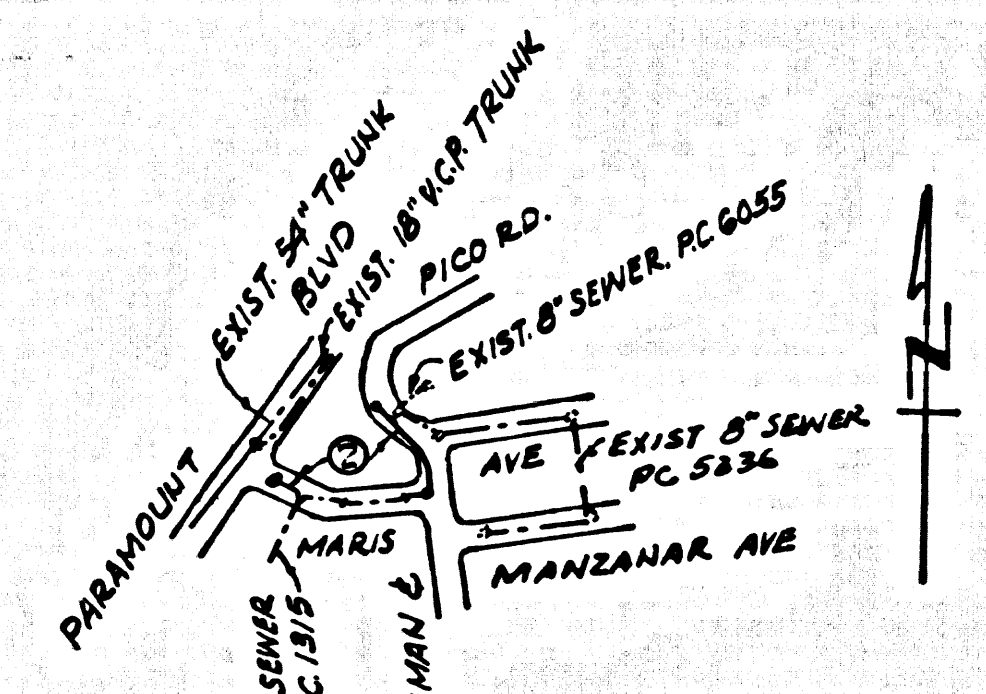


B.M. SY 1670A ELEV. 161.316
 L.F.B. Nail in N. Co. Washington
 Blvd. 3' 1 1/4" of R.C.R. @ N.W. Cor.
 Washington & Paramount Blvd. 4' 4 1/2"
 N. of 70' W. of E. 1st
 Rivera QUAD. 19.60



INDEX MAP
 P.C. 7316
 TRACT NO. 30077
 SCALE: 1" = 600'

PICO RIVERA BLDG. DIST. NO. 11.01

PROFILE ALIGNMENT AND GRADE OF
SANITARY SEWERS PAGE 1
 CONSTRUCTED IN
TRACT NO. 30077

PRIVATE CONTRACT NO. 7316

W.S. 36
 7 SHEETS, 3 PAGES
 SCALE: VERT. 1" = 4' HORIZ. 1" = 40' MAR, 1965

PREPARED IN THE OFFICES OF
OLSON SURVEYING SERVICE, INC.

By *Earl Phillips*
 REG. C. E. NO. 1820

FOR LEGEND SEE PLAN NO. S-1

- NOTE:
- PROVIDE STAKES ON THE PROPERTY LINE OR PROPERTY LINES PRODUCED AT RIGHT ANGLES TO THE SEWER LINE AT THE CENTER LINE OF EACH MANHOLE.
 - NO REPRESENTATIVE OF THE CITY ENGINEER WILL SURVEY OR LAY OUT ANY PORTION OF THE WORK.
 - THE PRIVATE ENGINEER SHALL FURNISH THE CITY ENGINEER WITH GRADE SHEETS AND STATIONING FOR ALL HOUSE LATERALS AND BRANCHES AND SHALL PROVIDE STAKES FOR THEM AT THEIR PROPER LOCATIONS WITH STATIONING PLAINLY MARKED. ALL HOUSE LATERALS SHALL BE CONSTRUCTED IN A STRAIGHT ALIGNMENT AT RIGHT ANGLES FROM THE MAIN LINE SEWER EXCEPT AS SHOWN ON THE PLANS. HOUSE LATERALS FROM CHIMNEYS SHALL NOT HAVE AN ANGLE OF LESS THAN 45° WITH THE MAIN LINE SEWER. ANY CHANGE IN ALIGNMENT SHALL BE REQUESTED IN WRITING BY THE PRIVATE ENGINEER.
 - THE PRIVATE ENGINEER SHALL FURNISH THE HOUSE LATERAL DEPTH AT THE PROPERTY LINE BELOW THE TOP OF CURB ELEVATION FOR EACH HOUSE LATERAL ON THE GRADE SHEET.
 - NO DIVISIONS SHALL BE MADE IN THESE PLANS WITHOUT THE APPROVAL OF THE CITY ENGINEER.
 - THE CONTRACTOR SHALL NOTIFY THE CONSTRUCTION DIVISION BY TELEPHONE, MADISON 9-4747, EXT. 8188, AT LEAST TWENTY-FOUR HOURS BEFORE STARTING ANY WORK UNDER THIS CONTRACT.
 - MANHOLES SHALL BE BRICK SEWER STRUCTURES PER S-3 PRECAST CONCRETE MANHOLES PER S-5 OR S-6 MAY BE USED AS AN ALTERNATE IN LOCATIONS APPROVED BY THE CITY ENGINEER.
 - USE STANDARD MANHOLE FRAMES AND COVERS, S-15, EXCEPT AS NOTED.
 - MANHOLE TOPS IN UNIMPROVED RIGHTS-OF-WAY TO BE 6" A.B.C. UNLTD. FINISHED GRADE.
 - USE EXTRA STRENGTH PIPE. ALL PIPE IS STANDARD DEPTH EXCEPT AS NOTED.
 - USE MECHANICAL COMPRESSION JOINTS FOR ALL V.C.P. JOINTS PER SPECS., SECS. 36, 46, 49 & 50.
 - WHERE EVER GROUND WATER IS ENCOUNTERED DURING THE CONSTRUCTION OF THE SEWERS, THE V.C.P. JOINTS SHALL BE OF JOINT COMPOUND PER SPECS., SECS. 38 & 48, OR MECHANICAL COMPRESSION JOINTS PER SPECS., SEC. 36.
 - IF A POWER POLE IS WITHIN THREE FEET OF THE SEWER, THE SEWER SHALL BE ENCASED, PER S-23, TWO FEET ON EACH SIDE FROM THE POINT OF INTERFERENCE.
 - IF DURING THE COURSE OF CONSTRUCTION IT IS DETERMINED THAT THERE IS LESS THAN FOUR FEET OF COVER OVER THE TOP OF A MAIN LINE OR HOUSE LATERAL V.C.P. SEWER WHICH IS NOT INDICATED ON THE PLANS, THE PIPE SHALL BE ENCASED PER S-23 UNLESS OTHERWISE APPROVED BY THE CITY ENGINEER.
 - HOUSE LATERALS TO BE CONSTRUCTED WITH 1/4" RISE PER FOOT TO PROPERTY LINE EXCEPT AS NOTED.
 - RESURFACE ALL TRENCHES WITHIN PAVED AREAS TO MEET L.A. COUNTY ROAD DEPT. OR CALIFORNIA STATE HIGHWAY REQUIREMENTS IN ACCORDANCE WITH PERMITS.
 - FOR ALLOWABLE LEAKAGE TEST USE FORMULA NO. 2, SPECS., SEC. 64.
 - ALL STATE AND LOCAL TRAFFIC SAFETY ORDERS WILL BE RIGIDLY ENFORCED.
 - THE CONTRACTOR SHALL PROVIDE TRAFFIC CONTROL AS ARRANGED WITH THE CITY OF PICO RIVERA AND SHALL POST A BOND SUFFICIENT TO INSURE COMPLIANCE WITH SAID ARRANGEMENTS BEFORE CONSTRUCTION IS STARTED.
 - The 30" Irrigation Line shall be sealed water tight with a brick and mortar double plug to be installed per specs., sec 60, at the time of sewer installation. The 24" Irrigation Line shall be sealed in likewise manner.

NOTE:
 GRADES TO WHICH THIS IMPROVEMENT IS TO BE CONSTRUCTED ARE SHOWN ON PLANS AND PROFILES. GRADE POINTS FOR TOP OF CURBS, CENTER LINE OF STREETS, OR CENTER LINE OF ALLEYS ARE SHOWN BY CIRCLES ON PROFILES AT ALL POINTS BETWEEN DESIGNATED POINTS. THE GRADE SHALL BE ESTABLISHED SO AS TO CONFORM TO A STRAIGHT LINE DRAWN BETWEEN SAID DESIGNATED POINTS. ELEVATIONS ARE IN FEET ABOVE M.S.L. & C.I. SEA LEVEL DATUM OF 1929.
 THIS DRAWING AND THE DATA HEREON ARE HEREBY MADE A PART OF THE SPECIFICATIONS.
 WORK SHALL BE CONSTRUCTED ACCORDING TO STANDARD SPECIFICATIONS DATED, 08/12/1963, ON FILE IN THE OFFICE OF THE CITY ENGINEER AND SHALL BE PROSECUTED ONLY IN THE PRESENCE OF THE CITY ENGINEER.
 BEFORE WORK CAN BE STARTED, THE CONTRACTOR MUST OBTAIN A PERMIT TO EXCAVATE IN CITY STREETS FROM THE L.A. COUNTY ROAD DEPT., DISTRICT OFFICE NO. 9, AND MAKE A DEPOSIT WITH THE CITY OF PICO RIVERA SUFFICIENT TO COVER THE COST OF CONSTRUCTION INSPECTION AND RECORD PLANS.
 APPROVAL OF THIS PLAN BY THE CITY OF PICO RIVERA DOES NOT CONSTITUTE A REPRESENTATION AS TO THE ACCURACY OF THE LOCATION OF OR THE EXISTENCE OR NON-EXISTENCE OF ANY UNDERGROUND UTILITY PIPE, OR STRUCTURE WITHIN THE LIMITS OF THIS PROJECT. THIS NOTE APPLIES TO ALL PAGES.
 IF WORK IS TO BE DONE IN A STATE HIGHWAY, A PERMIT MUST BE OBTAINED FROM THE STATE OF CALIFORNIA, DIVISION OF HIGHWAYS, 720 SOUTH SPRING STREET, LOS ANGELES, CALIFORNIA.

CITY OF PICO RIVERA, CALIFORNIA
 JOHN A. LAMBE, CITY ENGINEER J. D. PARKHURST, CHIEF ENGINEER
 CO. SAN. DIST. NO. 2

APPROVED BY *Earl Phillips* ASSISTANT SANITATION ENGINEER APPROVED BY *J. D. Parkhurst* CHIEF ENGINEER

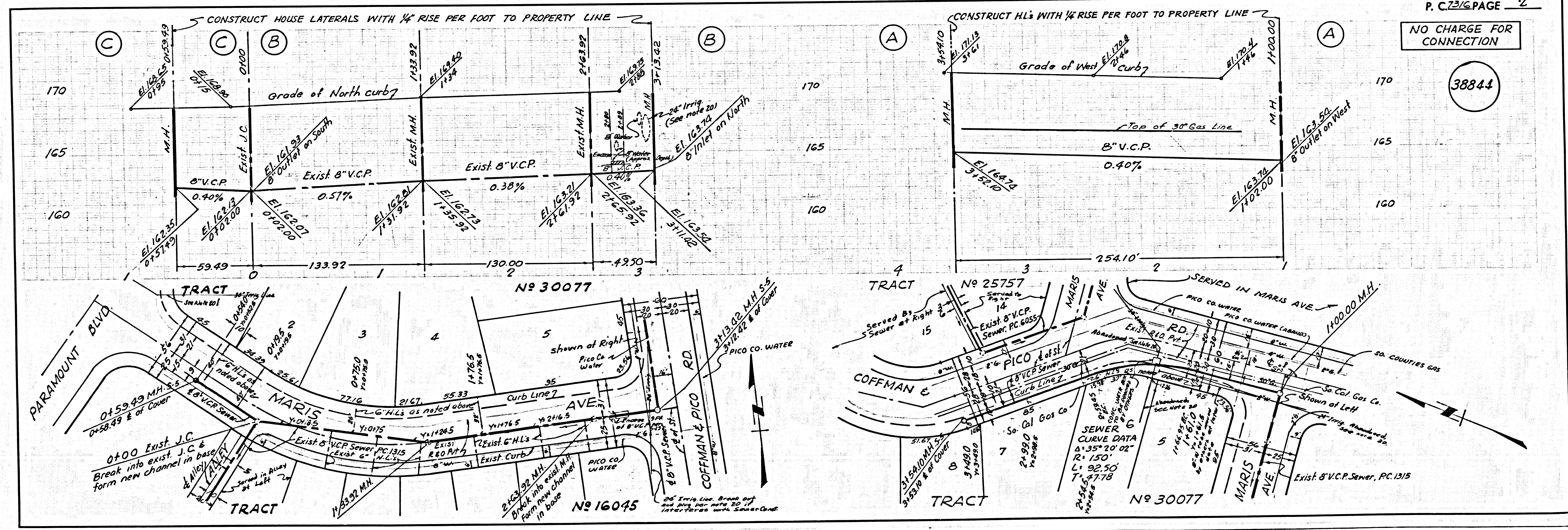
SUBMITTED BY *Earl Phillips* LOS ANGELES REGIONAL ENGINEER 02 12 3871

CHECKED BY *Earl Phillips* REG. C.E. NO. 1820

APPROVED BY *Earl Phillips* CITY OF PICO RIVERA

COLLECT CHARGES AS INDICATED
W. J. Williams

NO CONNECTIONS FOR THE DISPOSAL OF INDUSTRIAL WASTES SHALL BE MADE TO SEWERS SHOWN ON THESE DRAWINGS WITHOUT WRITTEN PERMISSION FROM THE CHIEF ENGINEER AND GENERAL MANAGER OF THE COUNTY SANITATION DISTRICTS.



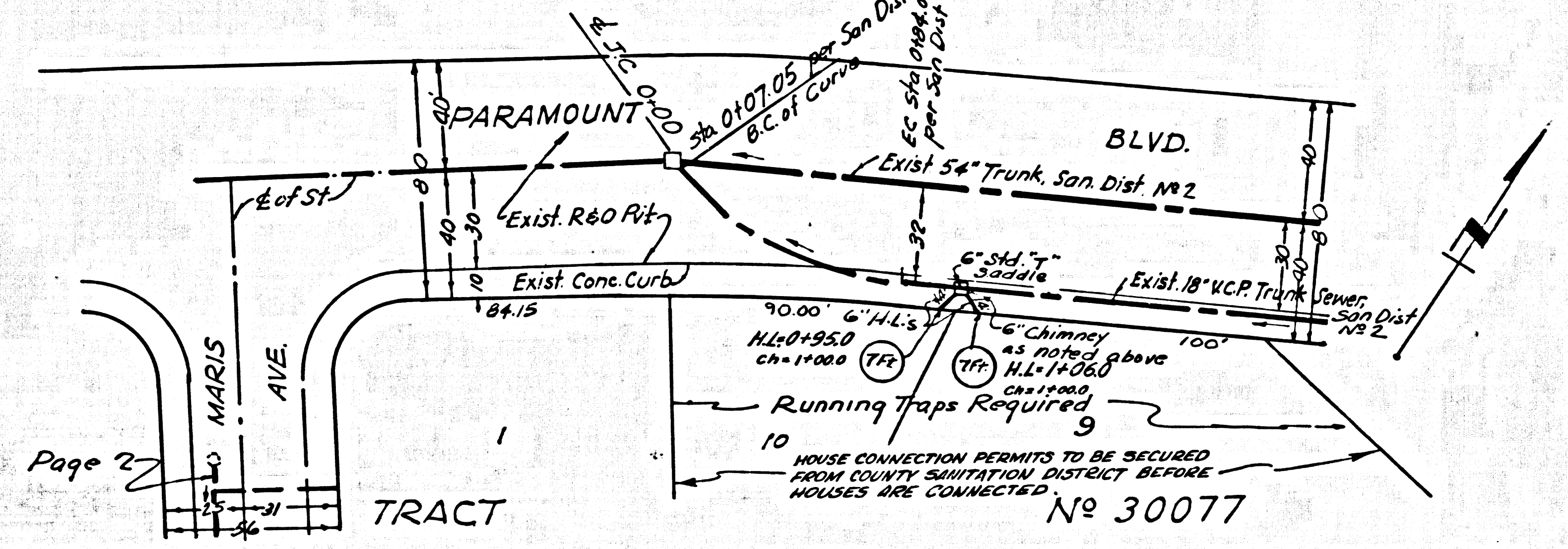
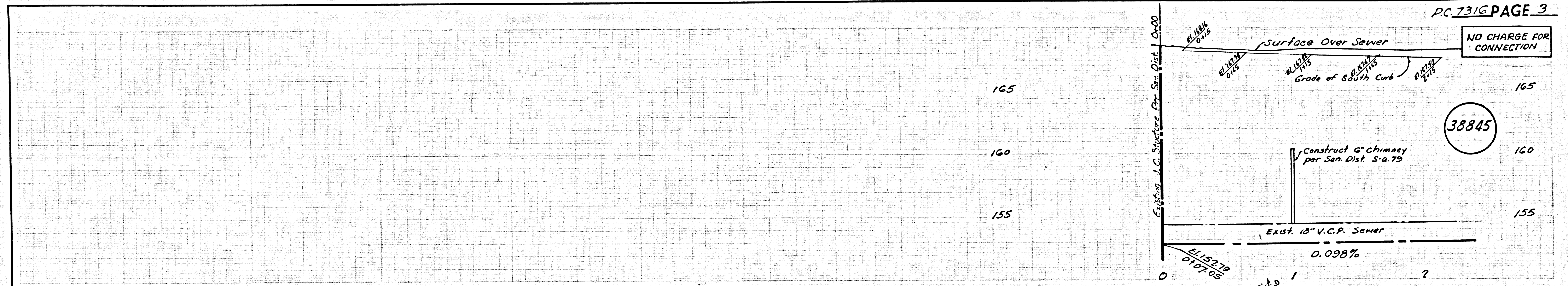
P. C. 7316 PAGE 2

NO CHARGE FOR CONNECTION

38844

NO CHARGE FOR CONNECTION

38845



HOUSE CONNECTION PERMITS TO BE SECURED FROM COUNTY SANITATION DISTRICT BEFORE HOUSES ARE CONNECTED. No 30077