

B.M. 31-6 ELEV. 157.653
 ATYS AV. LEONS ST. E. OF LEONS ST. 80' E.
 OF E. AVES. AVE. 11. A WELL PROTECTED BY
 A C.I. COVER MARKED COUNTY SURVEYOR
 MONUMENT, STANDARD C.S. MONUMENT STAMPED
 BM 31-6 RE 63, 1953
 FIELD BOOK 537 PAGE 11 19 62

CITY OF COMMERCE BLDG. DIST. NO. 6.01

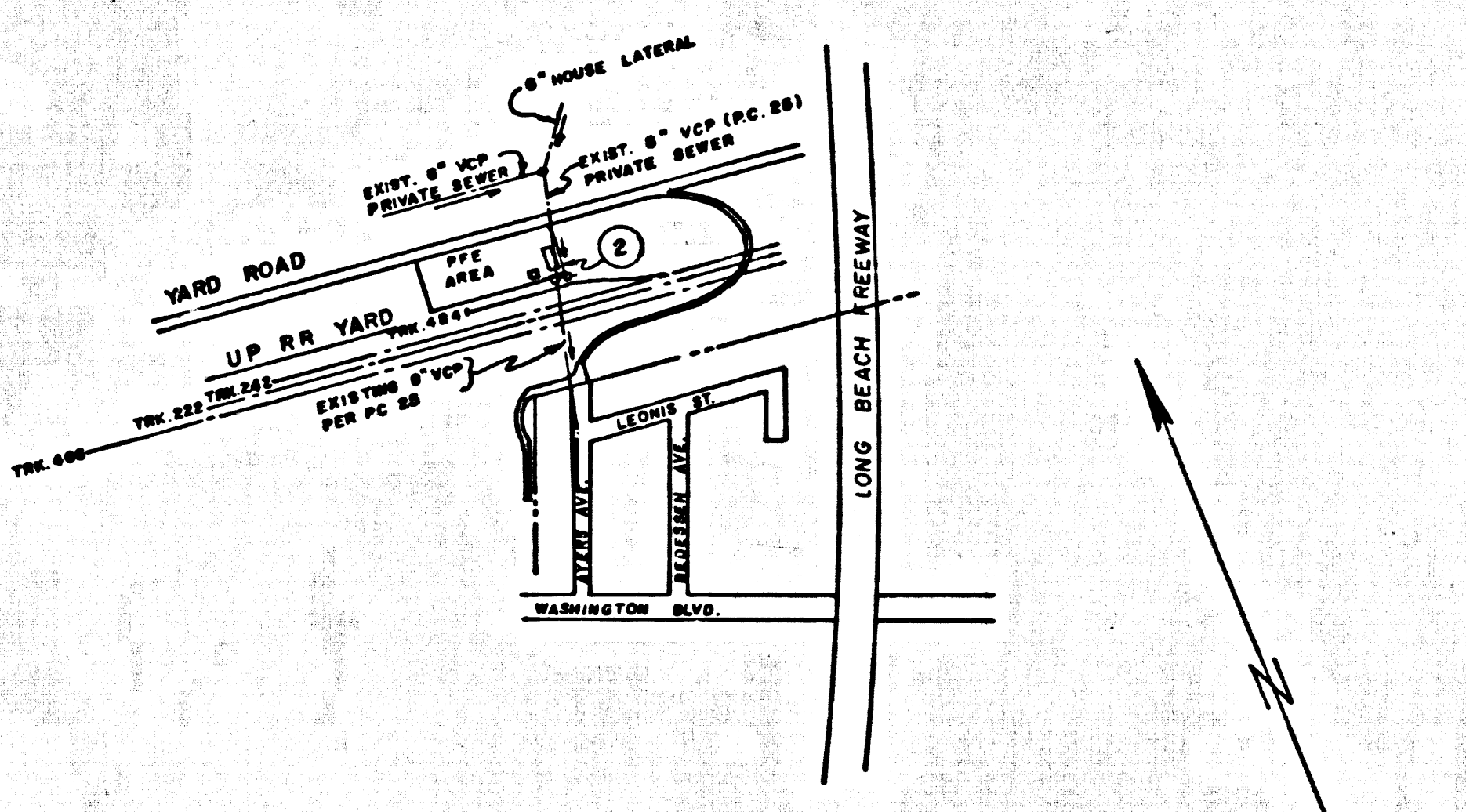
PROFILE ALIGNMENT AND GRADE OF P.C. 7321
 SANITARY SEWERS PAGE 1
 TO BE CONSTRUCTED IN

UNION PACIFIC RAILROAD YARD
 (PRIVATE SEWERS)
 PRIVATE CONTRACT NO. 7321

W.S. 36, A-4
 1 SHEETS, 2 PAGES

SCALE: VERT. 1" = 4' HORIZ. 1" = 40'
 MARCH, 1965
 PREPARED IN THE OFFICES OF
 GENERAL MECHANICAL AND ENGINEERING OFFICER
 PACIFIC FRUIT EXPRESS COMPANY
 116 NEW MONTGOMERY STREET, SAN FRANCISCO, CALIFORNIA 94105
 BY: William R. Carter
 REG. C. E. NO. C-7837

FOR LEGEND SEE PLAN NO. S-64



P.C. 7321
 INDEX MAP
 SCALE: 1" = 600'

- NOTES:
1. PROVIDE STAKES ON THE PROPERTY LINE OR PROPERTY LINES PRODUCED AT RIGHT ANGLES TO THE SEWER LINE AT THE CENTER LINE OF EACH MANHOLE.
 2. NO REPRESENTATIVE OF THE CITY ENGINEER WILL SURVEY OR LAY OUT ANY PORTION OF THE WORK.
 3. THE PRIVATE ENGINEER SHALL FURNISH THE CITY ENGINEER WITH GRADE SHEETS AND STATIONING FOR ALL HOUSE LATERALS AND Y BRANCHES AND SHALL PROVIDE STAKES FOR THEM AT THEIR PROPER LOCATIONS WITH STATIONING PLAINLY MARKED. ALL HOUSE LATERALS SHALL BE CONSTRUCTED IN A STRAIGHT ALIGNMENT AT RIGHT ANGLES FROM THE MAIN LINE SEWER EXCEPT AS SHOWN ON THE PLANS. HOUSE LATERALS FROM CHIMNEYS SHALL NOT HAVE AN ANGLE OF LESS THAN 45° WITH THE MAIN LINE SEWER. ANY CHANGE IN ALIGNMENT SHALL BE REQUESTED IN WRITING BY THE PRIVATE ENGINEER.
 4. THE PRIVATE ENGINEER SHALL FURNISH THE HOUSE LATERAL DEPTH AT THE PROPERTY LINE BELOW THE TOP OF CURB ELEVATION FOR EACH HOUSE LATERAL ON THE GRADE SHEET.
 5. NO DIVERSIONS SHALL BE MADE IN THESE PLANS WITHOUT THE APPROVAL OF THE CITY ENGINEER.
 6. THE CONTRACTOR SHALL NOTIFY THE CONSTRUCTION DIVISION BY TELEPHONE, MADISON 9-4747, EXT. 8188, AT LEAST TWENTY-FOUR HOURS BEFORE STARTING ANY WORK UNDER THIS CONTRACT.
 7. MANHOLES SHALL BE BRICK SEWER STRUCTURES PER S-2. RECAST CONCRETE MANHOLES PER S-8 OR S-9 MAY BE USED AS AN ALTERNATE IN LOCATIONS APPROVED BY THE CITY ENGINEER.
 8. USE STANDARD MANHOLE FRAMES AND COVERS, S-18, EXCEPT AS NOTED.
 9. MANHOLE TOPS IN UNIMPROVED RIGHTS-OF-WAY TO BE SIX INCHES ABOVE FINISHED GRADE.
 10. USE EXTRA STRENGTH PIPE. ALL PIPE IS STANDARD DEPTH EXCEPT AS NOTED.
 11. USE MECHANICAL JOINTS FOR ALL V.C.P. JOINTS PER SPECS, SECS. 34 & 46, 48.
 12. WHERE EVER GROUND WATER IS ENCOUNTERED DURING THE CONSTRUCTION OF THE SEWERS, THE V.C.P. JOINTS SHALL BE OF MECHANICAL COMPRESSION JOINTS PER SPECS, SECS. 34, 46 & 48.
 13. IF A POWER POLE IS WITHIN THREE FEET OF THE SEWER, THE SEWER SHALL BE ENCASED, PER S-25, TWO FEET ON EITHER SIDE FROM THE POINT OF INTERFERENCE.
 14. IF DURING THE COURSE OF CONSTRUCTION IT IS DETERMINED THAT THERE IS LESS THAN FOUR FEET OF COVER OVER THE TOP OF A MAIN LINE OR HOUSE LATERAL V.C.P. SEWER WHICH IS NOT INDICATED ON THE PLANS, THE PIPE SHALL BE ENCASED PER S-25, UNLESS OTHERWISE APPROVED BY THE CITY ENGINEER.
 15. RESURFACE ALL TRENCHES WITHIN PAVED AREAS TO MEET L.A. COUNTY ROAD DEPT. OR CALIFORNIA STATE HIGHWAY REQUIREMENTS IN ACCORDANCE WITH PERMITS.
 16. FOR ALLOWABLE LEAKAGE TEST USE FORMULA NO. 1, SPECS, SEC. 64.
 17. ALL STATE AND LOCAL TRENCH SAFETY ORDERS WILL BE RIGIDLY ENFORCED.

GRADES TO WHICH THIS IMPROVEMENT IS TO BE CONSTRUCTED ARE SHOWN ON PLANS AND PROFILES. GRADE POINTS FOR TOP OF CURBS, CENTER LINE OF STREETS, OR CENTER LINE OF ALLEYS ARE SHOWN BY CIRCLES ON PROFILES. AT ALL POINTS BETWEEN DESIGNATED POINTS THE GRADE SHALL BE ESTABLISHED SO AS TO CONFORM TO A STRAIGHT LINE DRAWN BETWEEN SAID DESIGNATED POINTS. ELEVATIONS ARE IN FEET ABOVE M.S.L. & U.S. MEAN LOW WATER OF TIDE.

THIS DRAWING AND THE DATA HEREON ARE HEREBY MADE A PART OF THE SPECIFICATIONS. WORK SHALL BE CONSTRUCTED ACCORDING TO STANDARD SPECIFICATIONS DATED MAY 25, 1952, ON FILE IN THE OFFICE OF THE CITY ENGINEER AND SHALL BE PROSECUTED ONLY IN THE PRESENCE OF THE CITY ENGINEER.

WHERE WORK CAN BE STARTED CONTRACTOR MUST OBTAIN A PERMIT TO LOCATE IN CITY STREETS FROM THE L.A. COUNTY ROAD DEPT., DISTRICT OFFICE NO. 11, AND MAKE A DEPOSIT WITH THE CITY OF COMMERCE, 2535 COMMERCE BLVD., \$100.00 TO COVER THE COST OF CONSTRUCTION INSPECTION AND RECORD PLANS.

APPROVAL OF THIS PLAN BY THE CITY OF COMMERCE DOES NOT CONSTITUTE A REPRESENTATION AS TO THE ACCURACY OF THE LOCATION OF OR THE EXISTENCE OR NON-EXISTENCE OF ANY UNDERGROUND UTILITY PIPE, OR STRUCTURE WITHIN THE LIMITS OF THIS PROJECT. THIS NOTE APPLIES TO ALL PAGES.

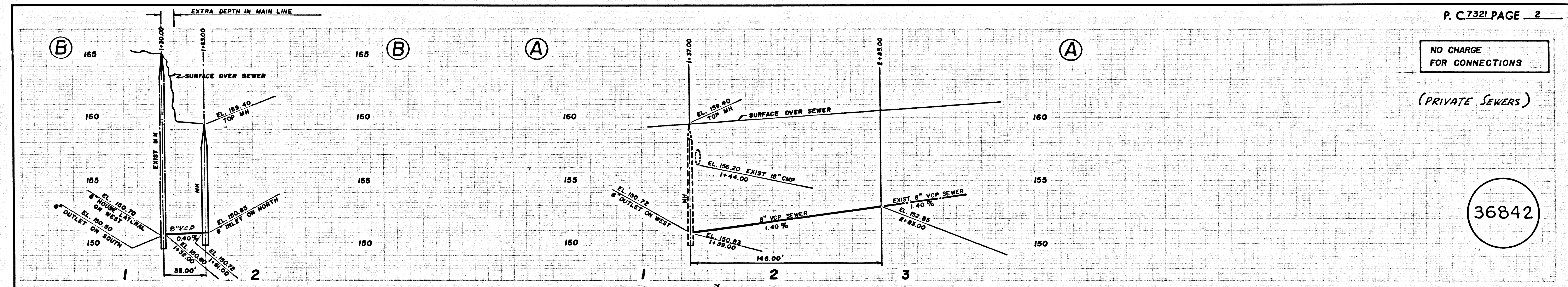
IF WORK IS TO BE DONE IN A STATE HIGHWAY, A PERMIT MUST BE OBTAINED FROM THE STATE OF CALIFORNIA, DIVISION OF HIGHWAYS, 120 SOUTH SPRING STREET, LOS ANGELES, CALIFORNIA.

CITY OF COMMERCE, CALIFORNIA
 JOHN A. LAMBIE, CITY ENGINEER J. D. PARKHURST, CHIEF ENGINEER
 CO. SAN. DIST. NO. 2
 APPROVED BY: [Signature] APPROVED BY: [Signature]
 ASSISTANT SANITATION ENGINEER OFFICE ENGINEER
 SUBMITTED BY: [Signature]
 REGIONAL ENGINEER
 CHECKED BY: [Signature]
 REG. C. E. NO. 7132

COLLECT CHARGES AS INDICATED
 W.R. Jan 1/13/65

APPROVED: [Signature] DATE: 4-13-65
 INDUSTRIAL WASTE DIVISION

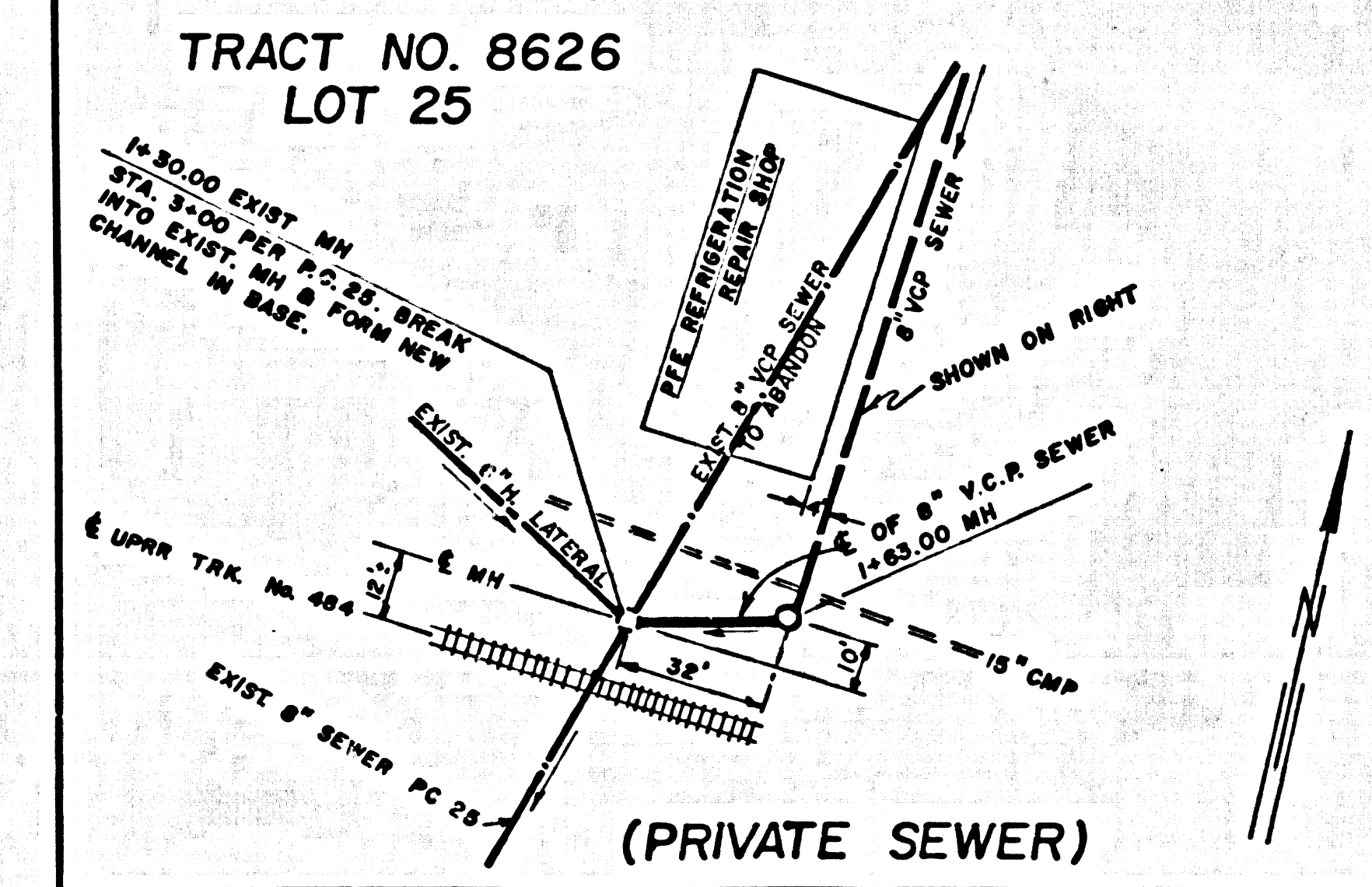
36841



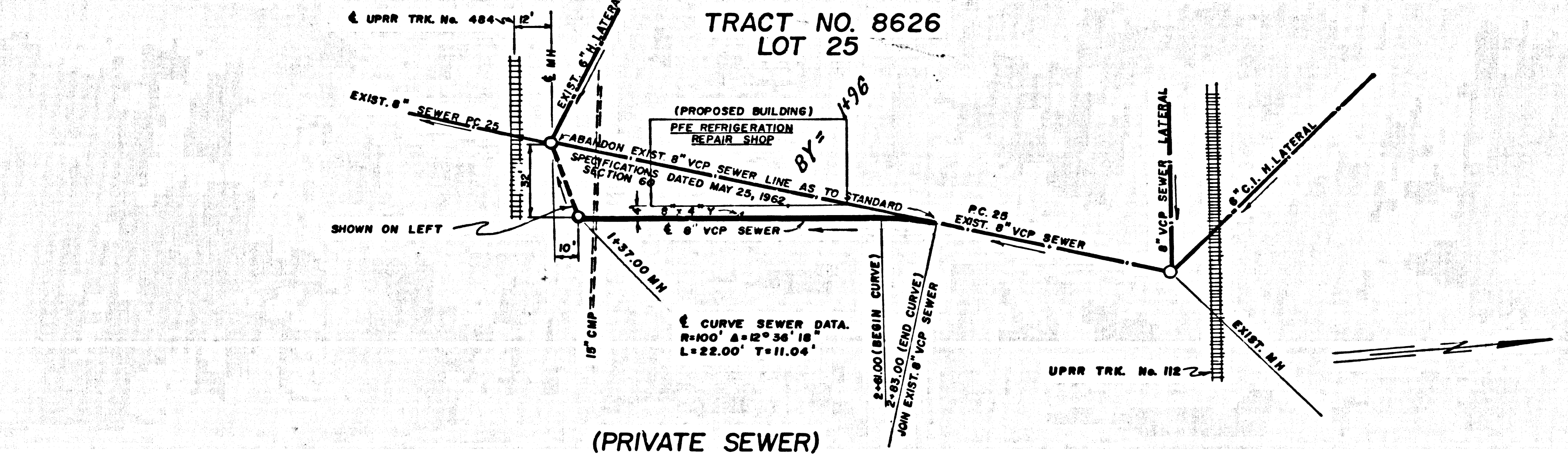
NO CHARGE FOR CONNECTIONS

(PRIVATE SEWERS)

36842



(PRIVATE SEWER)



(PRIVATE SEWER)