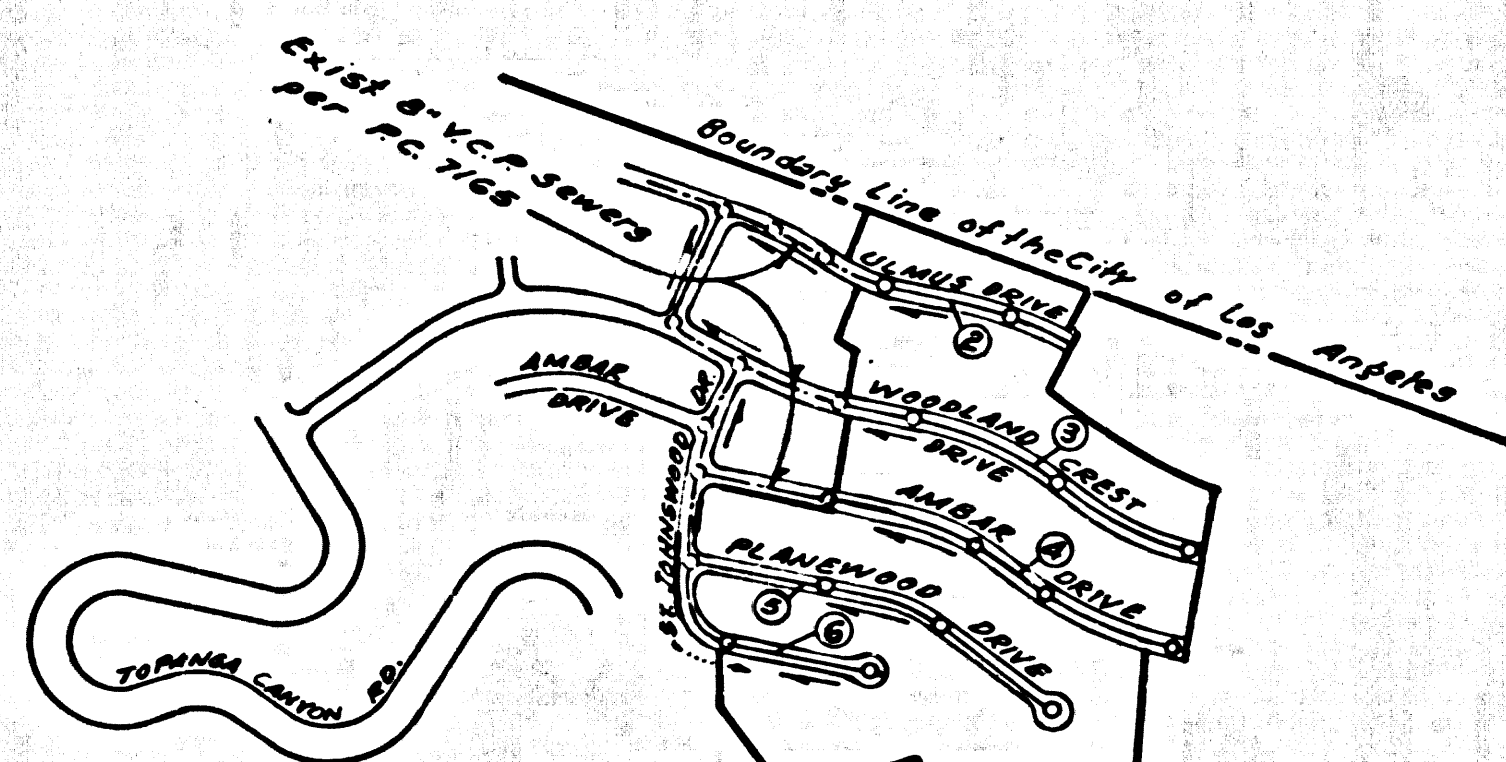


B.M. 5Y-5558 ELEV. 1400.774
 L.A. City Br. Cap Man. in Conc. 3' below
 surface on Torrance Cyn Rd. 162 mi. N.
 Torrance Summit 3.60 mi. of N. Edge of
 City along prominent ridge near City of
 L.A. Dept. of Public Works 12-2-19, 1938
 M-1118U O.D.M. 1960

TESTING PER LAS VIRGENES MUNICIPAL WATER DISTRICT
I. INFILTRATION AND LEAKAGE TESTS: METHOD USED FOR TESTING WILL BE THE SAME AS LOS ANGELES COUNTY EXCEPT THE FORMULA TO BE USED IS AS FOLLOWS:
 0.033 GALLONS/MINUTE/INCH OF DIAMETER/1,000 FEET
 OR
 250 GALLONS/DAY/INCH OF DIAMETER/MILE
2. MANHOLE LEAKAGE TESTS: AT THE DISCRETION OF THE DISTRICT'S REPRESENTATIVE ONE MANHOLE OUT OF EVERY TEN MANHOLES, AND A MINIMUM OF TWO WILL BE FILLED WITH WATER AND AFTER THREE HOURS WILL BE CHECKED FOR LEAKAGE, WITH NO DROP IN LEVEL. FOR EVERY ONE MANHOLE NOT PASSING TESTS FIVE MORE WILL BE TESTED AT THE DISCRETION OF THE DISTRICT'S REPRESENTATIVE.
3. AIR TESTING: WHERE THE DIFFERENCE IN ELEVATION BETWEEN THE INVERT OF THE UPPER STRUCTURE AND THE INVERT OF THE LOWER STRUCTURE IS MORE THAN SIX FEET (6') AN AIR TEST WILL BE MADE.
 THE TIME TAKEN TO LOSE ONE (1) POUND PER SQUARE INCH GAUGE PRESSURE FROM THREE (3) POUNDS PER SQUARE INCH GAUGE PRESSURE TO TWO (2) POUNDS PER SQUARE INCH GAUGE PRESSURE SHALL NOT BE LESS THAN THOSE SHOWN ON THE FOLLOWING TABLE:

MANHOLE DIAMETER	MINIMUM TIME LOSS
6" - 14"	1 MINUTE
16" - 20"	2 MINUTES
21" - 30"	3 MINUTES
33" - 36"	4 MINUTES

 IF THE TIME IS LESS THAN LISTED IN THE TABLE ABOVE, THE CONTRACTOR SHALL MAKE SUCH REPAIRS AS ARE NECESSARY TO ELIMINATE THE EXCESSIVE LEAKAGE.



INDEX MAP
 TRACT NO. 29896
 P.C. 7324
 Scale: 1"=600'
 Note: Numbers in circles indicate Page Number.

CALABASAS BLDG. DIST. NO. 9.1

- NOTES:**
1. PROVIDE STAKES ON THE PROPERTY LINE OR PROPERTY LINES PRODUCED AT RIGHT ANGLES TO THE SEWER LINE AT THE CENTER LINE OF EACH MANHOLE.
 2. NO REPRESENTATIVE OF THE COUNTY ENGINEER WILL SURVEY OR LAY OUT ANY PORTION OF THE WORK.
 3. THE PRIVATE ENGINEER SHALL FURNISH THE COUNTY ENGINEER WITH GRADE SHEETS AND STATIONING FOR ALL HOUSE LATERALS AND T-BRANCHES AND SHALL PROVIDE STAKES FOR THESE AT THEIR PROPER LOCATIONS WITH STATIONING PLAINLY MARKED. ALL HOUSE LATERALS SHALL BE CONSTRUCTED IN A STRAIGHT ALIGNMENT AT RIGHT ANGLES TO THE MAIN LINE SEWER EXCEPT AS SHOWN ON THE PLANS. HOUSE LATERALS FROM CHIMNEYS SHALL NOT HAVE AN ANGLE OF LESS THAN 45° WITH THE MAIN LINE SEWER. ANY CHANGE IN ALIGNMENT SHALL BE INDICATED BY METERS BY THE PRIVATE ENGINEER.
 4. THE PRIVATE ENGINEER SHALL FURNISH THE HOUSE LATERAL DEPTH AT THE PROPERTY LINE BELOW THE TOP OF CURB ELEVATION FOR EACH HOUSE LATERAL ON THE GRADE SHEET.
 5. NO REVISIONS SHALL BE MADE IN THESE PLANS WITHOUT THE APPROVAL OF THE COUNTY ENGINEER.
 6. THE CONTRACTOR SHALL NOTIFY THE CONSTRUCTION DIVISION BY TELEPHONE, HARRISON 9-247, EXT. 6124, AT LEAST TWENTY-FOUR HOURS BEFORE STARTING ANY WORK UNDER THIS CONTRACT.
 7. MANHOLES SHALL BE BRICK SEWER STRUCTURES PER S-5 - PRECAST CONCRETE MANHOLES PER S-5 OR S-6 MAY BE USED AS AN ALTERNATE IN LOCATIONS APPROVED BY THE COUNTY ENGINEER.
 8. THE STANDARD MANHOLE FRAMES AND COVERS, S-2 EXCEPT AS NOTED.
 9. MANHOLE TOPS IN UNIMPROVED AREAS OF WAYS TO BE SIX INCHES ABOVE FINISHED GRADE.
 10. USE EXTRA STRENGTH PIPE, ALL PIPE IS STANDARD DEPTH EXCEPT AS NOTED.
 11. USE CEMENT MORTAR OR MECHANICAL COMPRESSION JOINTS FOR ALL V.C.P. JOINTS PER SPEC., SECS. 24, 48 & 49.
 12. WHERE EVIDENT GROUND WATER IS ENCOUNTERED DURING THE CONSTRUCTION OF THE SEWERS, THE V.C.P. JOINTS SHALL BE OF JOINT COMPOUND PER SPEC., SECS. 33 & 44, OR MECHANICAL COMPRESSION JOINTS PER SPEC., SEC. 34.
 13. IF A POWER POLE IS WITHIN THREE FEET OF THE SEWER, THE SEWER SHALL BE ENCASED, PER S-23 - TWO FEET ON EITHER SIDE FROM THE POINT OF INTERFERENCE.
 14. IF DURING THE COURSE OF CONSTRUCTION IT IS DETERMINED THAT THERE IS LESS THAN FOUR FEET OF COVER OVER THE TOP OF A MAIN LINE OR HOUSE LATERAL V.C.P. SEWER WHICH IS NOT INDICATED ON THE PLANS, THE PIPE SHALL BE ENCASED PER S-23 UNLESS OTHERWISE APPROVED BY THE COUNTY ENGINEER.
 15. HOUSE LATERALS TO BE CONSTRUCTED WITH INVERTS AT PROPERTY LINE... FEET BELOW CURB GRADE EXCEPT AS NOTED.
 16. INSURE ALL TREES WITHIN PAVED AREAS TO MEET L.A. COUNTY ROAD DEPT. OR CALIFORNIA STATE HIGHWAY REQUIREMENTS IN ACCORDANCE WITH PERMITS.
 17. FOR ALLOWABLE LEAKAGE TEST USE FORMULA NO. 1000000... PER SPEC. SEC. 54.
 18. ALL STATE AND LOCAL THROUGH SAFETY DEVICES SHALL BE RIGIDLY ENFORCED.
 19. CONSTRUCTION IN FILLED AREAS:
 - a. AN ACCEPTABLE CERTIFICATION OF CONSTRUCTION TESTS RESULTS SHALL BE SUBMITTED TO THE CONSTRUCTION DIVISION. CONSTRUCTION TESTS ARE TO BE MADE IN ACCORDANCE WITH A.S.T.M. STANDARD METHOD OF TEST D-697-65T.
 - b. NO CONSTRUCTION IS PERMITTED IN THE FILLED AREAS WHERE THE RELATIVE DENSITY OF CONSTRUCTION IS LESS THAN 85%.
 - c. IF THE RELATIVE DENSITY OF CONSTRUCTION IS LESS THAN 80% ALL MAIN LINE AND HOUSE LATERALS SHALL BE ENCASED PER S-23 - OR HAVE A SPECIAL BASE COURSE PER S-21 - CASE SEE SPECIAL REQUIREMENTS PER S-18 - ARE REQUIRED.
 - d. IF THE RELATIVE DENSITY OF CONSTRUCTION IS 80% OR GREATER THE SPECIAL PROVISIONS IN C ARE NOT REQUIRED.
 20. STATION IN CIRCLES WITHIN LOT INDICATES HOUSE LATERAL SHALL NOT BE CONSTRUCTED UPSTREAM OF THAT STATION.

COLLECT CHARGES AS INDICATED
Revised

ISSUE NO HOUSE CONNECTION PERMITS SEE SANITATION DIV.

PROFILE ALIGNMENT AND GRADE OF **P.C. 7324**
SANITARY SEWERS PAGE 1
 TO BE CONSTRUCTED IN

TRACT NO. 29896
 M.B. 758, 25-27
PRIVATE CONTRACT NO. 7324

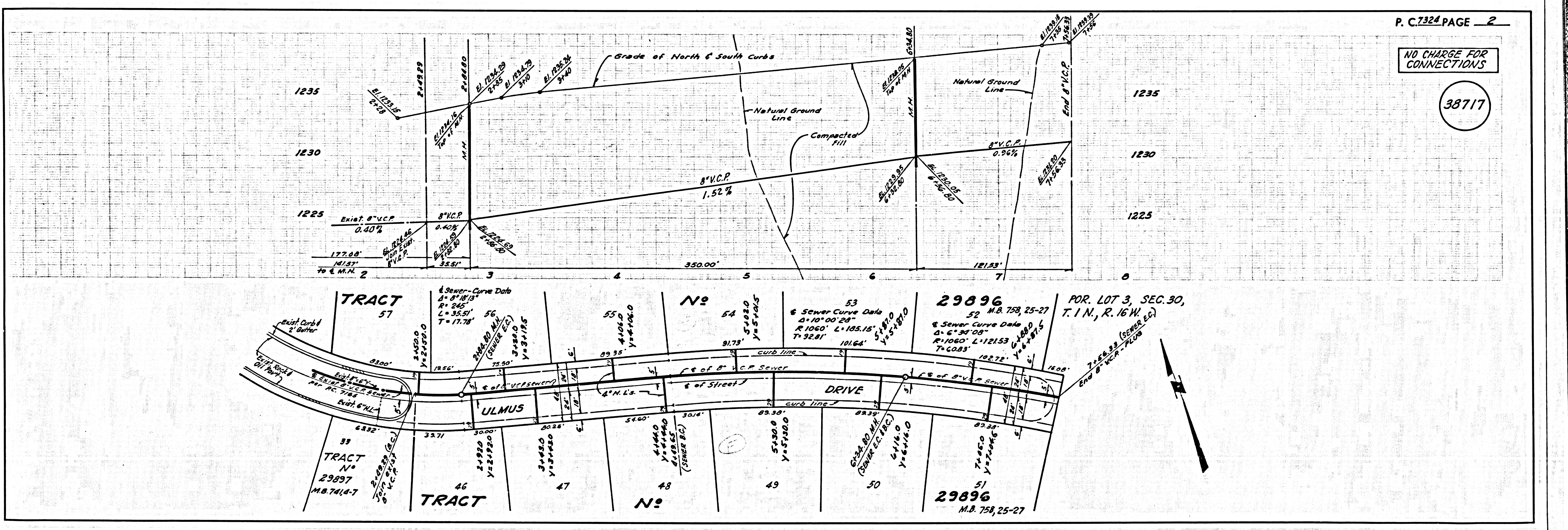
W.S. GO
 3 SHEETS, 6 PAGES
 SCALE: HORIZ. 1"=100' VERT. 1"=10'
 JULY, 1966
 PREPARED IN THE OFFICES OF

MCINTIRE & QUIROS, INC.
 REG. C.E. NO. 14297

NOTE:
 GRADES TO WHICH THE IMPROVEMENT IS TO BE CONSTRUCTED ARE SHOWN ON PLANS AND PROFILES. GRADE POINTS FOR TOP OF CURB, CENTER LINE OF STREETS, OR CENTER LINE OF ALLEYS ARE SHOWN BY CIRCLES ON PROFILES. AT ALL POINTS BETWEEN DESIGNATED POINTS THE GRADE SHALL BE ESTABLISHED SO AS TO CONFORM TO A STRAIGHT LINE DRAWN BETWEEN SAID DESIGNATED POINTS. ELEVATIONS ARE IN FEET ABOVE U.S.C. & G.S. MEAN LEVEL DATUM OF 1929.
 THIS DRAWING AND THE DATA HEREON ARE HEREBY MADE A PART OF THE SPECIFICATIONS. (AS REVISED)
 WORK SHALL BE CONSTRUCTED ACCORDING TO STANDARD SPECIFICATIONS DATED 1955, AS FILED IN THE OFFICE OF THE COUNTY ENGINEER AND SHALL BE PROSECUTED ONLY IN THE PRESENCE OF THE COUNTY ENGINEER.
 BEFORE WORK CAN BE STARTED, THE CONTRACTOR MUST OBTAIN A PERMIT TO EXCAVATE IN COUNTY STREETS FROM THE L.A. COUNTY ROAD DEPT., DISTRICT OFFICE NO. 3 AND PAY A FEE TO THE COUNTY ENGINEER, ROOM 300, COUNTY ENGINEERING BUILDING, ONE WEST SECOND STREET, LOS ANGELES, CALIFORNIA. REGIONAL OFFICE, SUPPORT TO COVER THE COST OF CONSTRUCTION INSPECTION AND RECORD PLANS.
 APPROVAL OF THIS PLAN BY THE COUNTY OF LOS ANGELES DOES NOT CONSTITUTE A REPRESENTATION AS TO THE ACCURACY OF THE LOCATION OR OF THE EXISTENCE OR NON-EXISTENCE OF ANY UNDERGROUND UTILITY PIPE, OR STRUCTURE WITHIN THE LIMITS OF THE PROJECT. THIS NOTE APPLIES TO ALL PAGES.
 THE WORK IS TO BE DONE IN A STATE HIGHWAY. A PERMIT MUST BE OBTAINED FROM THE STATE OF CALIFORNIA, DIVISION OF HIGHWAYS, 220 SOUTH SPRING STREET, LOS ANGELES, CALIFORNIA.

COUNTY OF LOS ANGELES, CALIFORNIA
JOHN A. LAMBIE, COUNTY ENGINEER
 APPROVED BY: *Blair E. Keen* (Sanitation Engineer)
 APPROVED BY: *John A. Lambie* (County Engineer)
 SUBMITTED BY: *James C. McIntire* (Regional Engineer)
 CHECKED BY: *Thomas L. Volz* (Reg. C.E. No. 10553)

J. N. 0365.40



P.C. 7324 PAGE 2

NO CHARGE FOR CONNECTIONS

38717

