

B.M. SY 3972 ELEV. 44.037  
 Fd. USC and G.S. Br. Cap Mon. Flush with  
 ground 1.35' W. & E. of Wilmington Ave. 1.65'  
 N. of Hwy. to House No. 20117, Wilmington  
 Ave., mcd. N-780-1946  
 GARDENA QUAD. 1960

**NOTICE TO CONTRACTORS**  
 The existence and location of any underground  
 utility pipes or structures shown on these plans  
 are obtained by a search of the available records.  
 The Contractor is required to take due precautionary  
 measures to protect the utility lines not of record  
 or not shown on these plans.

**LENNOX BLDG. DIST. NO. 7**

PROFILE ALIGNMENT AND GRADE OF **P.C. 7332**  
**SANITARY SEWERS PAGE 1**  
 TO BE CONSTRUCTED IN

**TRACT No 29974**  
**PRIVATE CONTRACT NO. 7332**

W.S. 26  
 4 SHEETS, 8 PAGES  
 SCALE: HORIZ. 1" = 40' VERT. 1" = 4'  
 DECEMBER, 1964  
 PREPARED IN THE OFFICES OF

*James E. Whiteley*  
 REG. C. E. NO. 14385  
 FOR LEGEND SEE PLAN NO. S-1

NOTE:  
 GRADES TO WHICH THE IMPROVEMENT IS TO BE CONSTRUCTED ARE SHOWN ON PLANS AND PROFILES. GRADE POINTS FOR TOP OF CURBS, CENTER LINE OF ALLEYS ARE SHOWN BY CIRCLES ON PROFILES. AT ALL POINTS BETWEEN DESIGNATED POINTS THE GRADE SHALL BE ESTABLISHED SO AS TO CONFORM TO A STRAIGHT LINE DRAWN BETWEEN SAID DESIGNATED POINTS. ELEVATIONS ARE IN FEET ABOVE U.S.C. & G.S. SEA LEVEL DATUM OF 1929.  
 THE DRAWING AND THE DATA HEREON ARE HEREBY MADE A PART OF THE SPECIFICATIONS.  
 WORK SHALL BE CONSTRUCTED ACCORDING TO STANDARD SPECIFICATIONS DATED 10/27/55, 1962, ON FILE IN THE OFFICE OF THE COUNTY ENGINEER AND SHALL BE PROTECTED ONLY IN THE PRESENCE OF THE COUNTY ENGINEER.  
 BEFORE WORK CAN BE STARTED, THE CONTRACTOR MUST OBTAIN A PERMIT TO EXCAVATE IN COUNTY STREETS FROM THE L.A. COUNTY ROAD DEPT. DISTRICT OFFICE AND A PERMIT TO OCCUPY COUNTY ENGINEERING BUILDING, 100 WEST SECOND STREET OR PALMS VILLAGE, CANTONMENT, 15422 1/2 REGIONAL OFFICE, SUFFICIENT TO COVER THE COST OF CONSTRUCTION INSPECTION AND RECORD PLANS.  
 APPROVAL OF THIS PLAN BY THE COUNTY OF LOS ANGELES DOES NOT CONSTITUTE A REPRESENTATION AS TO THE ACCURACY OF THE LOCATION OR OF THE EXISTENCE OR NON-EXISTENCE OF ANY UNDERGROUND UTILITY PIPE, OR STRUCTURE WITHIN THE LIMITS OF THIS PROJECT. THIS NOTE APPLIES TO ALL PAGES.  
 IF WORK IS TO BE DONE IN A STATE HIGHWAY, A PERMIT MUST BE OBTAINED FROM THE STATE OF CALIFORNIA, DIVISION OF HIGHWAYS, 126 SOUTH SPRING STREET, LOS ANGELES, CALIFORNIA.

COUNTY OF LOS ANGELES, CALIFORNIA  
 JOHN A. LAMBIE, COUNTY ENGINEER J. D. PARKHURST, CHIEF ENGINEER

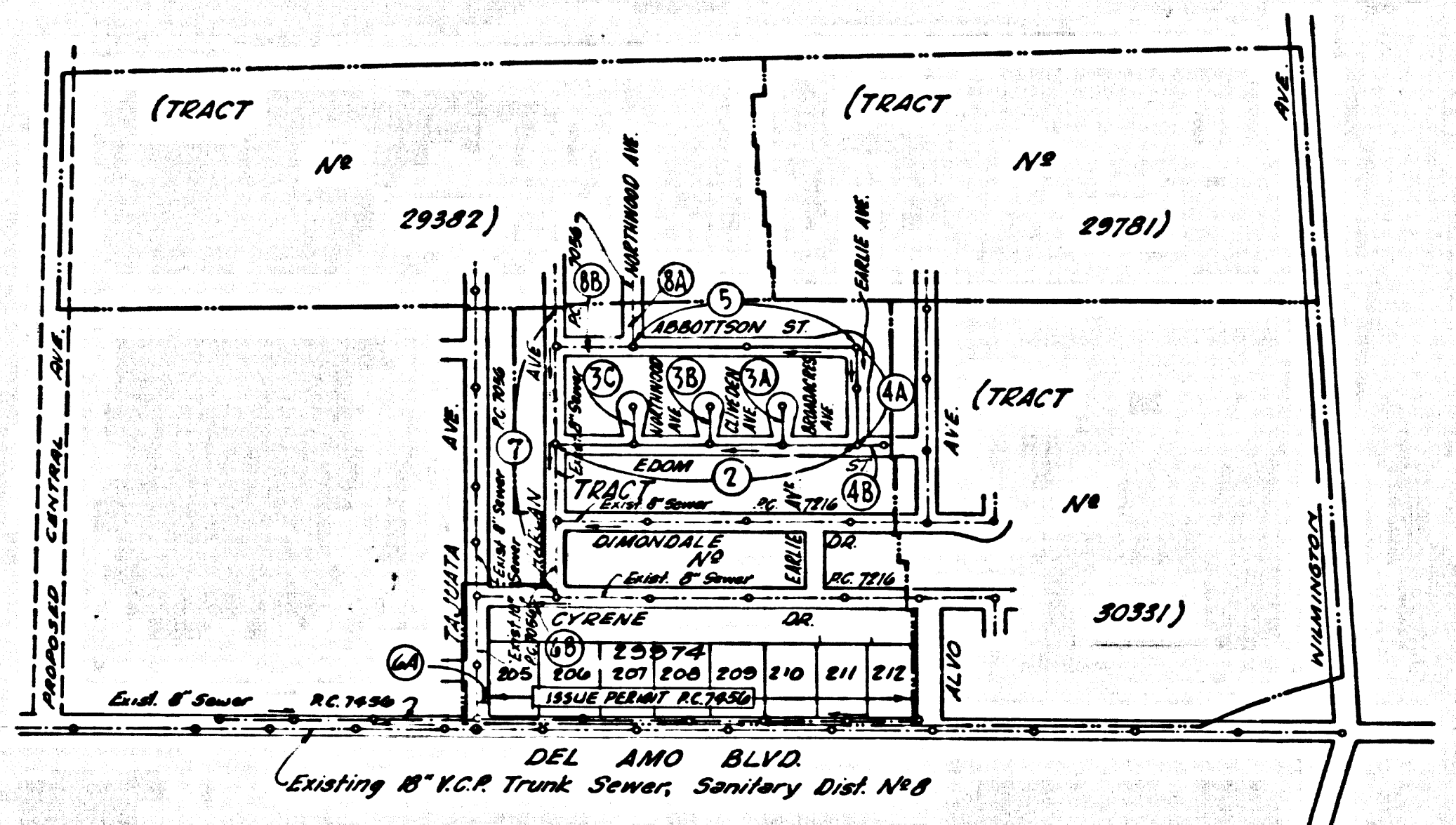
APPROVED BY *Richard E. ...* ASSISTANT SANITATION ENGINEER  
 APPROVED BY *...* OFFICE ENGINEER  
 SUBMITTED BY *...* REGIONAL ENGINEER  
 CHECKED BY *...* REG. C. E. NO. 10653

J. N. 036547

REVISION: Revised Lot Nos.  
 and dimensions in Tract No 29974

February 7, 1967  
 Approved: *...*

REVISION: 6" House Laterals  
 revised to 4" House Laterals on  
 all Pages except Lateral at Station  
 1472.00 TAJAUTA AVENUE, Page 6A  
 December 8, 1965  
 Approved: *...*

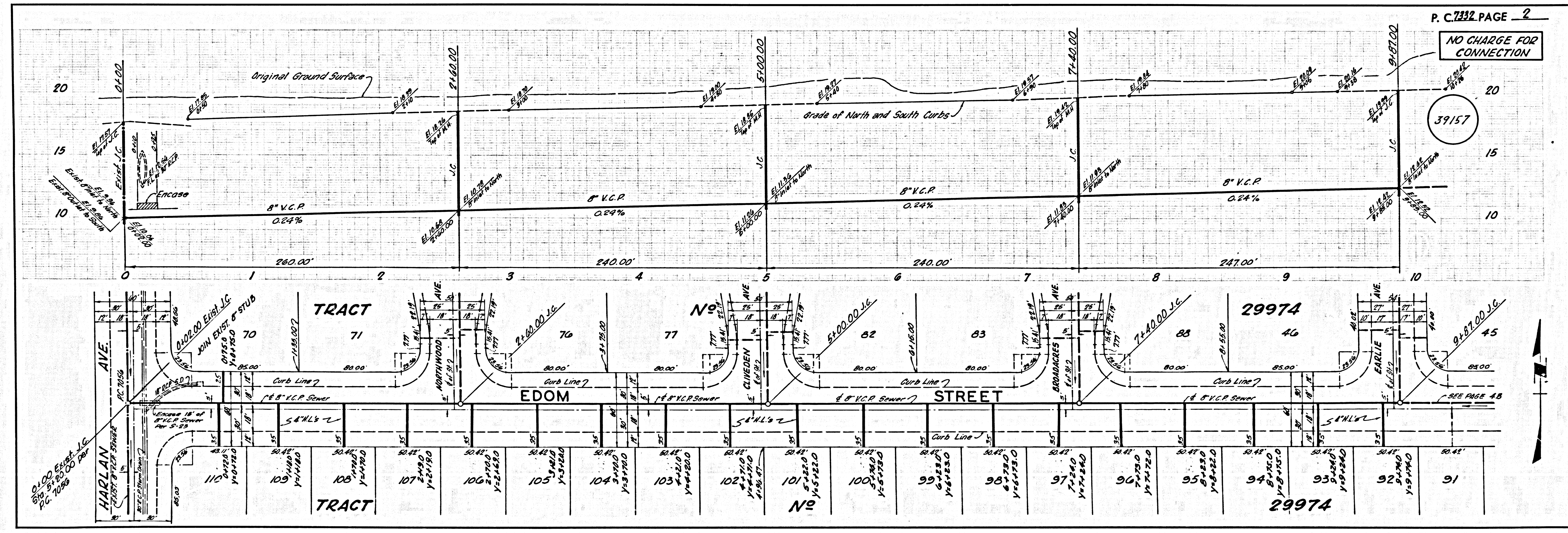


**INDEX MAP**  
 SCALE: 1" = 600'  
**P.C. 7332**

- NOTES:
1. PROVIDE STAKES ON THE PROPERTY LINE OR PROPERTY LINES PRODUCED AT RIGHT ANGLES TO THE SEWER LINE AT THE CENTER LINE OF EACH MANHOLE.
  2. NO REPRESENTATIVE OF THE COUNTY ENGINEER WILL SURVEY OR LAY OUT ANY PORTION OF THE WORK.
  3. THE PRIVATE ENGINEER SHALL FURNISH THE COUNTY ENGINEER WITH GRADE SHEETS AND STATIONING FOR ALL HOUSE LATERALS AND Y BRANCHES AND SHALL PROVIDE STAKES FOR THESE AT THEIR PROPER LOCATIONS WITH STATIONING PLAINLY MARKED. ALL HOUSE LATERALS SHALL BE CONSTRUCTED IN A STRAIGHT ALIGNMENT AT RIGHT ANGLES FROM THE MAIN LINE SEWER EXCEPT AS SHOWN ON THE PLANS. HOUSE LATERALS FROM CHIMNEYS SHALL NOT HAVE AN ANGLE OF LESS THAN 45° WITH THE MAIN LINE SEWER. ANY CHANGE IN ALIGNMENT SHALL BE REQUESTED IN WRITING BY THE PRIVATE ENGINEER.
  4. THE PRIVATE ENGINEER SHALL FURNISH THE HOUSE LATERAL DEPTH AT THE PROPERTY LINE BELOW THE TOP OF CURB ELEVATION FOR EACH HOUSE LATERAL ON THE GRADE SHEET.
  5. NO REVISIONS SHALL BE MADE IN THESE PLANS WITHOUT THE APPROVAL OF THE COUNTY ENGINEER.
  6. THE CONTRACTOR SHALL NOTIFY THE CONSTRUCTION DIVISION BY TELEPHONE, MADISON 9-4747, EXT. 8153, AT LEAST TWENTY-FOUR HOURS BEFORE STARTING ANY WORK UNDER THIS CONTRACT.
  7. MANHOLES SHALL BE BRICK SEWER STRUCTURES PER S-3 PRECAST CONCRETE MANHOLES PER S-5 OR S-6 MAY BE USED AS AN ALTERNATE IN LOCATIONS APPROVED BY THE COUNTY ENGINEER.
  8. USE STANDARD MANHOLE FRAMES AND COVERS, S-16 EXCEPT AS NOTED.
  9. MANHOLE TOPS IN UNIMPROVED RIGHTS-OF-WAY TO BE SIX INCHES ABOVE FINISHED GRADE.
  10. USE EXTRA STRENGTH PIPE. ALL PIPE IS STANDARD DEPTH EXCEPT AS NOTED.
  11. USE MECHANICAL COMPRESSION JOINTS FOR ALL V.C.P. JOINTS PER SPECS, SECS. 36, 40 & 41.
  12. WHERE EVER GROUND WATER IS ENCOUNTERED DURING THE CONSTRUCTION OF THE SEWERS, THE V.C.P. JOINTS SHALL BE OF JOINT COMPOUND PER SPECS, SECS. 32 & 41, OR MECHANICAL COMPRESSION JOINTS PER SPECS, SEC. 34.
  13. IF A POWER POLE IS WITHIN THREE FEET OF THE SEWER, THE SEWER SHALL BE ENCASED PER S-25 CASE III, TWO FEET ON EACH SIDE FROM THE POINT OF INTERFERENCE.
  14. IF DURING THE COURSE OF CONSTRUCTION IT IS DETERMINED THAT THERE IS LESS THAN FOUR FEET OF COVER OVER THE TOP OF A MAIN LINE OR HOUSE LATERAL V.C.P. SEWER WHICH IS NOT INDICATED ON THE PLANS, THE PIPE SHALL BE ENCASED PER S-25 UNLESS OTHERWISE APPROVED BY THE COUNTY ENGINEER.
  15. HOUSE LATERALS TO BE CONSTRUCTED WITH INVERTS AT PROPERTY LINE ... FEET BELOW CURB GRADE EXCEPT AS NOTED.
  16. RESURFACE ALL TRINCHES WITHIN PAVED AREAS TO MEET L.A. COUNTY ROAD DEPT. OR CALIFORNIA STATE HIGHWAY REQUIREMENTS IN ACCORDANCE WITH PERMITS.
  17. FOR ALLOWABLE MESSAGE TEST USE FORMULA NO. ... SPECS, SEC. 64.
  18. ALL STATE & LOCAL TRINCH SAFETY ORDERS WILL BE RIGIDLY ENFORCED.
  19. CONSTRUCTION IN FILLED AREAS:  
 (a) IN AN ACCEPTABLE CONDITION OF COMPACTION TESTS SHALL BE SUBMITTED TO THE CONSTRUCTION DIVISION. COMPACTION TESTS ARE TO BE MADE IN ACCORDANCE WITH A.S.T.M. STANDARD METHOD OF TEST, D-493-47.  
 (b) NO CONSTRUCTION IS PERMITTED IN FILLED AREAS UNLESS THE RELATIVE DENSITY OF COMPACTION IS LESS THAN 90%.  
 (c) IF THE RELATIVE DENSITY OF COMPACTION IS LESS THAN 90%, ALL MAIN LINE AND HOUSE LATERALS SHALL BE GRADED PER S-25 OR HAVE A SPECIAL CASE COURSE PER S-31 CASE III SPECIAL MANHOLE BASES PER S-14 ARE REQUIRED.  
 (d) IF THE RELATIVE DENSITY OF COMPACTION IS 90% OR GREATER, THE SPECIAL PROVISION IN (c) ARE NOT REQUIRED.

**COLLECT CHARGES AS INDICATED**  
*S. ... 7-19-65*

NO CONNECTIONS FOR THE DISPOSAL OF INDUSTRIAL WASTES SHALL BE MADE TO SEWERS SHOWN ON THESE DRAWINGS WITHOUT WRITTEN PERMISSION FROM THE CHIEF ENGINEER AND GENERAL MANAGER OF THE COUNTY SANITATION DISTRICTS.



P. C. 7332 PAGE 2  
**NO CHARGE FOR CONNECTION**  
 39157

