

**BENCH MARK**  
 S.C. 1007 Road Dist. B. M. Top. M. -  
 S. 2nd Concrete Curb & Sidewalk  
 N. 1810th St. E. E. from Center Line  
 1.18' 10.00' 0.00' of from Center Line  
 617' Road  
 QUAD OTTERBEIN 65 ELEV 794.61

**SAN DIMAS BLDG. DIST. NO. 10**

PROFILE ALIGNMENT AND GRADE OF **P.C. 7335**  
**SANITARY SEWERS** PAGE 1  
 CONSTRUCTED IN

**CROOKED CREEK DRIVE**  
**PRIVATE CONTRACT NO. 7335**

W.S. 30  
 2 SHEETS, 3 PAGES  
 SCALE: HORIZ. 1" = 40' VERT. 1" = 4' April 1965  
 PREPARED IN THE OFFICES OF  
 Registered Engineers, Inc.  
 1777 N. Garry Avenue, Pomona, California 91768  
 by: *Ronald Schindler*  
 REG. C. E. NO. 11159  
 FOR LEGEND SEE PLAN NO. S-1

- NOTES:**
1. PROVIDE STAKES ON THE PROPERTY LINE OR PROPERTY LINES PRODUCED AT RIGHT ANGLES TO THE SEWER LINE AT THE CENTER LINE OF EACH MANHOLE.
  2. NO REPRESENTATIVE OF THE COUNTY ENGINEER WILL SURVEY OR LAY OUT ANY PORTION OF THE WORK.
  3. THE PRIVATE ENGINEER SHALL FURNISH THE COUNTY ENGINEER WITH GRADE SHEETS AND STATIONING FOR ALL HOUSE LATERALS AND Y BRANCHES AND SHALL PROVIDE STAKES FOR THEM AT THEIR PROPER LOCATIONS WITH STATIONING PLAINLY MARKED. ALL HOUSE LATERALS SHALL BE CONSTRUCTED IN A STRAIGHT ALIGNMENT AT RIGHT ANGLES FROM THE MAIN LINE SEWER EXCEPT AS SHOWN ON THE PLANS. ANY CHANGE IN ALIGNMENT SHALL BE REQUESTED IN WRITING BY THE PRIVATE ENGINEER.
  4. THE PRIVATE ENGINEER SHALL FURNISH THE HOUSE LATERAL DEPTH AT THE PROPERTY LINE BELOW THE TOP OF CURB ELEVATION FOR EACH HOUSE LATERAL ON THE GRADE SHEET.
  5. NO REVISIONS SHALL BE MADE IN THESE PLANS WITHOUT THE APPROVAL OF THE COUNTY ENGINEER.
  6. THE CONTRACTOR SHALL NOTIFY THE CONSTRUCTION DIVISION BY TELEPHONE, MADISON 9-4747, EXT. 8155, AT LEAST TWENTY-FOUR HOURS BEFORE STARTING ANY WORK UNDER THIS CONTRACT.
  7. MANHOLES SHALL BE BRICK SEWER STRUCTURES PER S. S. SPEC. SECT. 1-5. PRECAST CONCRETE MANHOLES PER S-5 OR S-6 MAY BE USED AS AN ALTERNATE IN LOCATIONS APPROVED BY THE COUNTY ENGINEER.
  8. USE STANDARD MANHOLE FRAMES AND COVERS, S-15.
  9. USE EXTRA STRENGTH PIPE. ALL PIPE IS STANDARD DEPTH EXCEPT AS NOTED.
  10. USE MECHANICAL COMPRESSION JOINTS FOR ALL V.C.P. JOINTS PER SPEC., SECS. 14, 48 & 49.
  11. IF A POWER POLE IS WITHIN THREE FEET OF THE SEWER, THE SEWER SHALL BE ENCASED, PER S-23 TWO FEET ON EITHER SIDE FROM THE POINT OF INTERFERENCE.
  12. IF DURING THE COURSE OF CONSTRUCTION IT IS DETERMINED THAT THERE IS LESS THAN FOUR FEET OF COVER OVER THE TOP OF A MAIN LINE OR HOUSE LATERAL V.C.P. SEWER WHICH IS NOT INDICATED ON THE PLANS, THE PIPE SHALL BE ENCASED PER S-23 UNLESS OTHERWISE APPROVED BY THE COUNTY ENGINEER.
  13. HOUSE LATERALS TO BE CONSTRUCTED ACCORDING TO STANDARD SPECIFICATIONS DATED 7/27/52, ON FILE IN THE OFFICE OF THE COUNTY ENGINEER AND SHALL BE PROSECUTED ONLY IN THE PRESENCE OF THE COUNTY ENGINEER.
  14. BEFORE WORK CAN BE STARTED, THE CONTRACTOR MUST OBTAIN A PERMIT TO EXCAVATE IN COUNTY STREETS FROM THE L.A. COUNTY ROAD DEPT., DISTRICT OFFICE NO. 7, 125th STREET, AND PAY A FEE TO THE COUNTY ENGINEER, ROOM 303, COUNTY ENGINEERING BUILDING, 126 WEST SECOND STREET OR REGIONAL OFFICE, SUFFICIENT TO COVER THE COST OF CONSTRUCTION INSPECTION AND RECORD PLANS.
  15. APPROVAL OF THIS PLAN BY THE COUNTY OF LOS ANGELES DOES NOT CONSTITUTE A REPRESENTATION AS TO THE ACCURACY OF THE LOCATION OF OR THE EXISTENCE OR NON-EXISTENCE OF ANY UNDERGROUND UTILITY PIPE, OR STRUCTURE WITHIN THE LIMITS OF THIS PROJECT. THIS NOTE APPLIES TO ALL PAGES.
  16. IF WORK IS TO BE DONE IN A STATE HIGHWAY, A PERMIT MUST BE OBTAINED FROM THE STATE OF CALIFORNIA, DIVISION OF HIGHWAYS, 126 SOUTH SPRING STREET, LOS ANGELES, CALIFORNIA.

NO CONNECTIONS FOR THE DISPOSAL OF INDUSTRIAL WASTES SHALL BE MADE TO SEWERS SHOWN ON THESE DRAWINGS WITHOUT WRITTEN PERMISSION FROM THE CHIEF ENGINEER AND GENERAL MANAGER OF THE COUNTY SANITATION DISTRICTS.

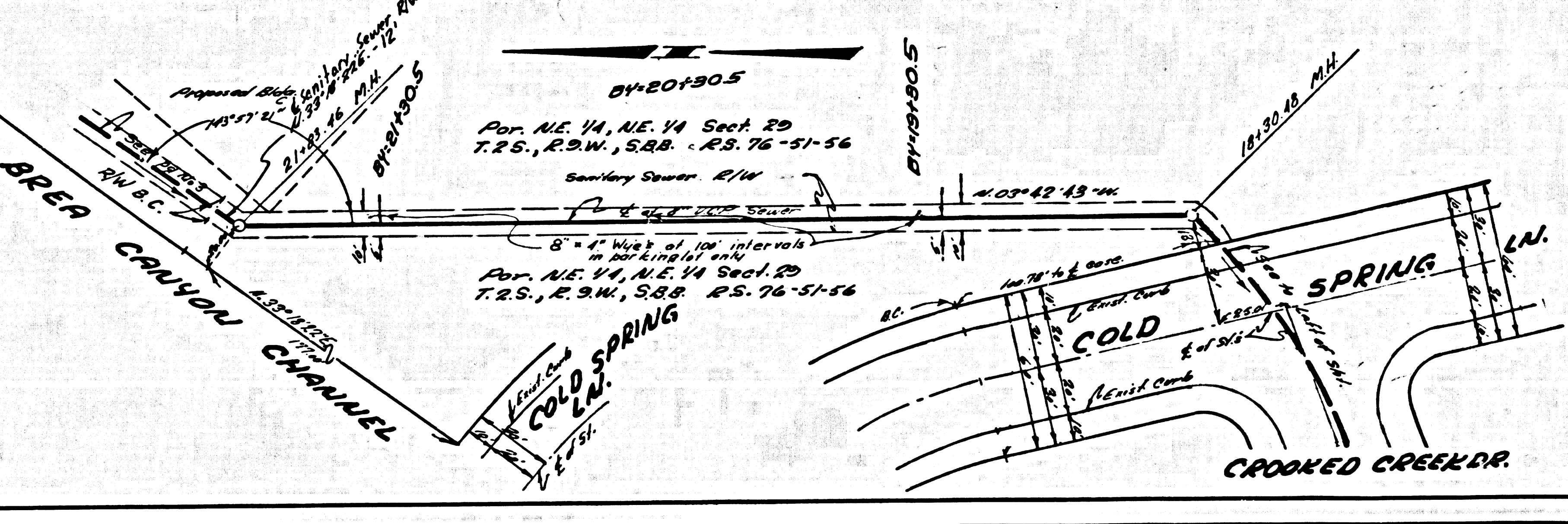
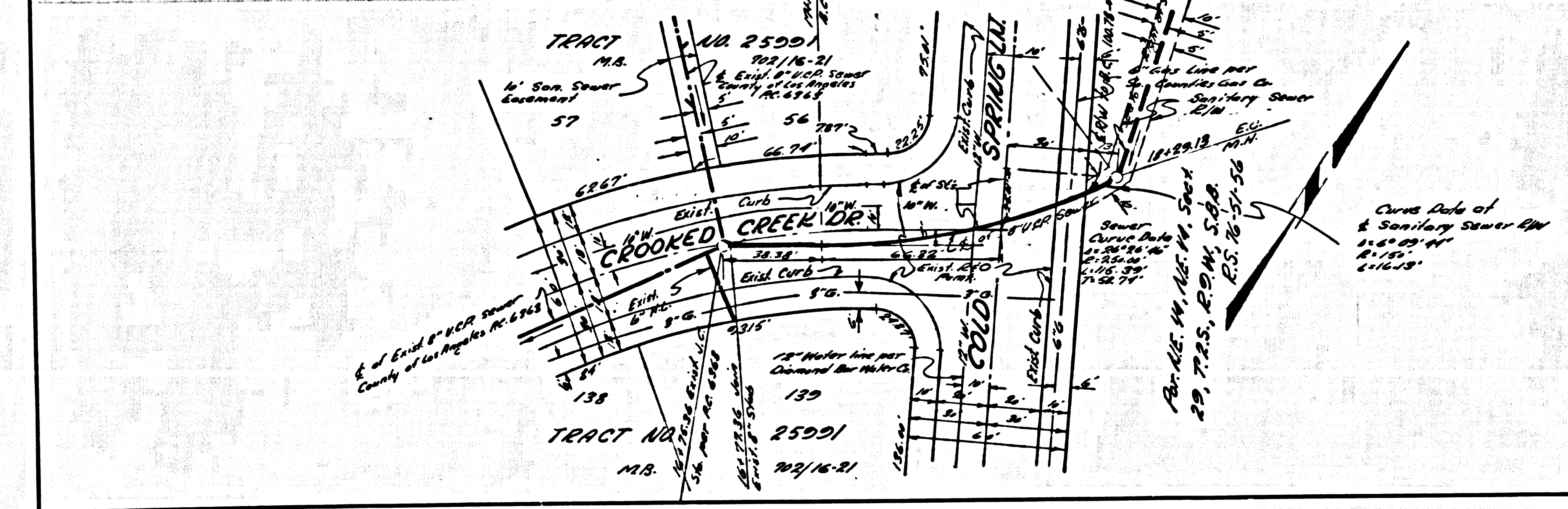
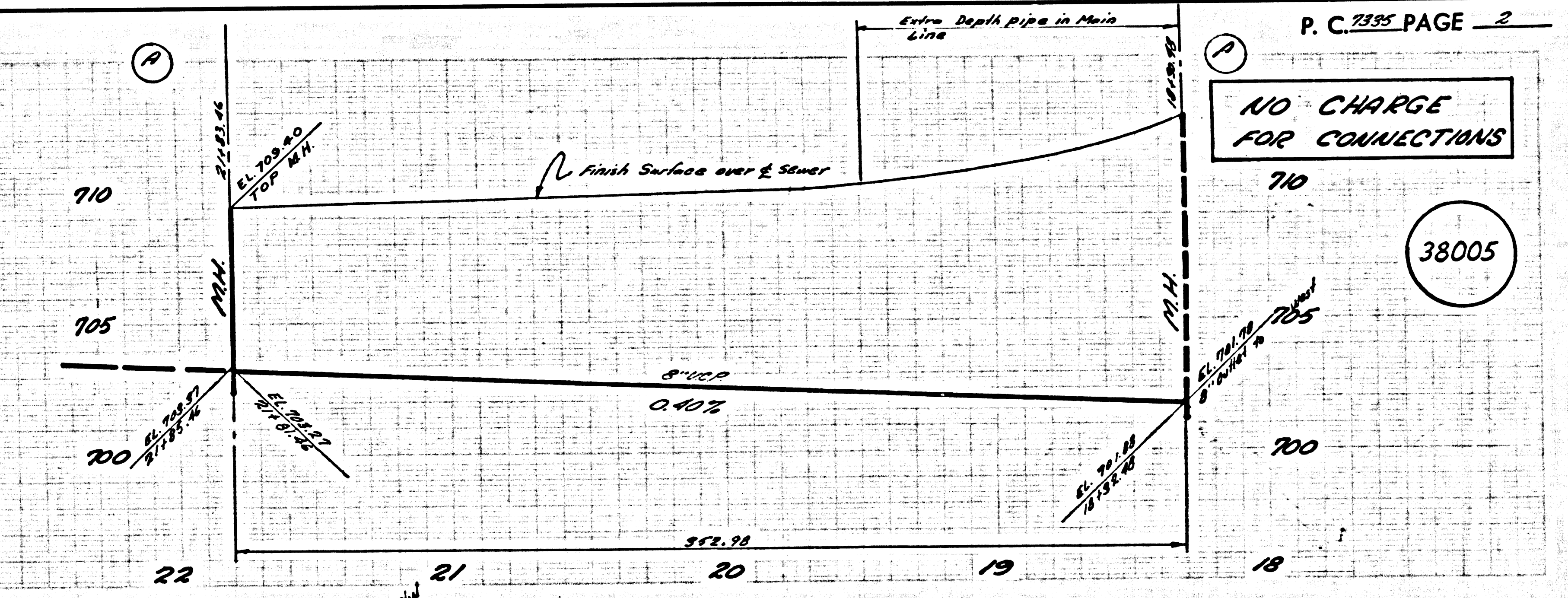
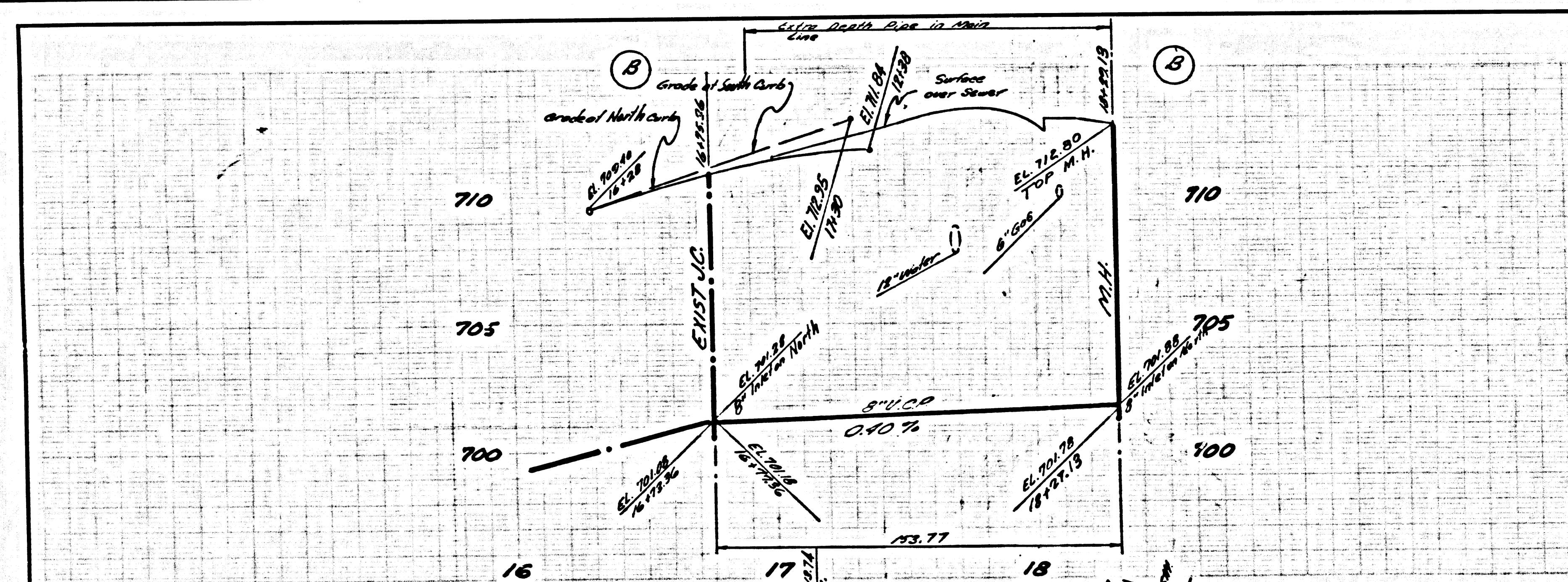
**COUNTY OF LOS ANGELES, CALIFORNIA**  
**JOHN A. LAMBIE, COUNTY ENGINEER** **J. D. PARKHURST, CHIEF ENGINEER**  
 CO. SAN. DIST. NO. 10  
 APPROVED BY: *R. Schindler* ASSISTANT SANITATION ENGINEER  
 APPROVED BY: *J. D. Parkhurst* CHIEF ENGINEER

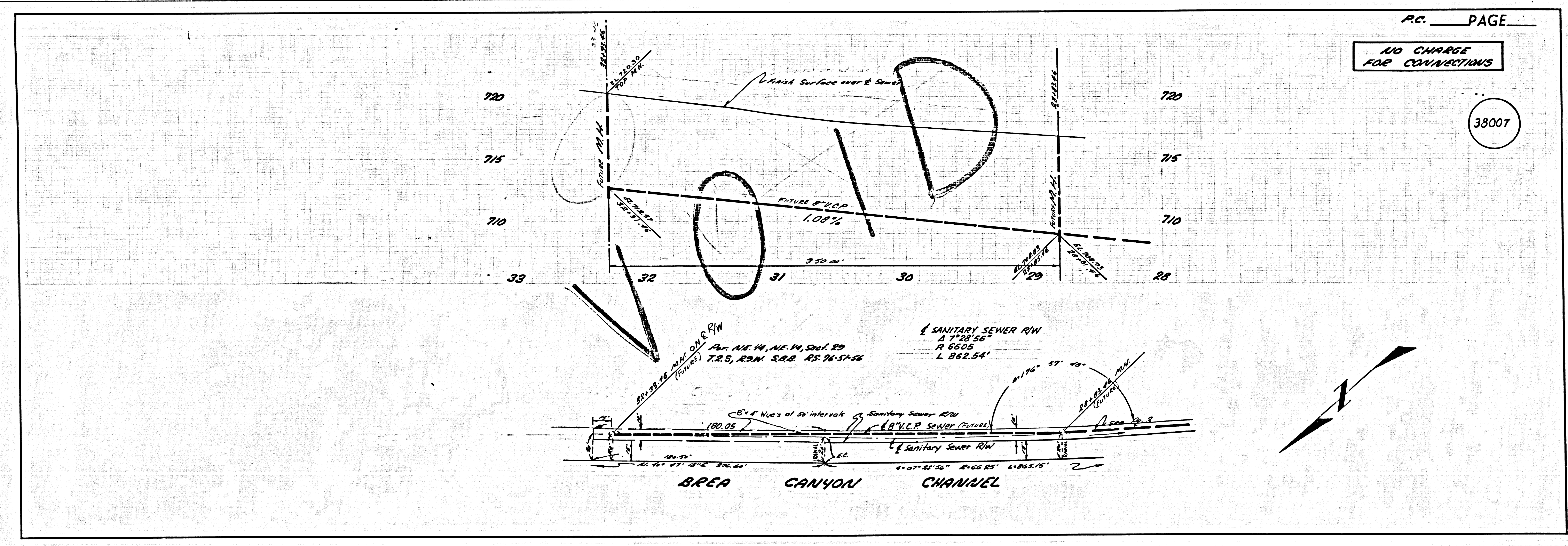
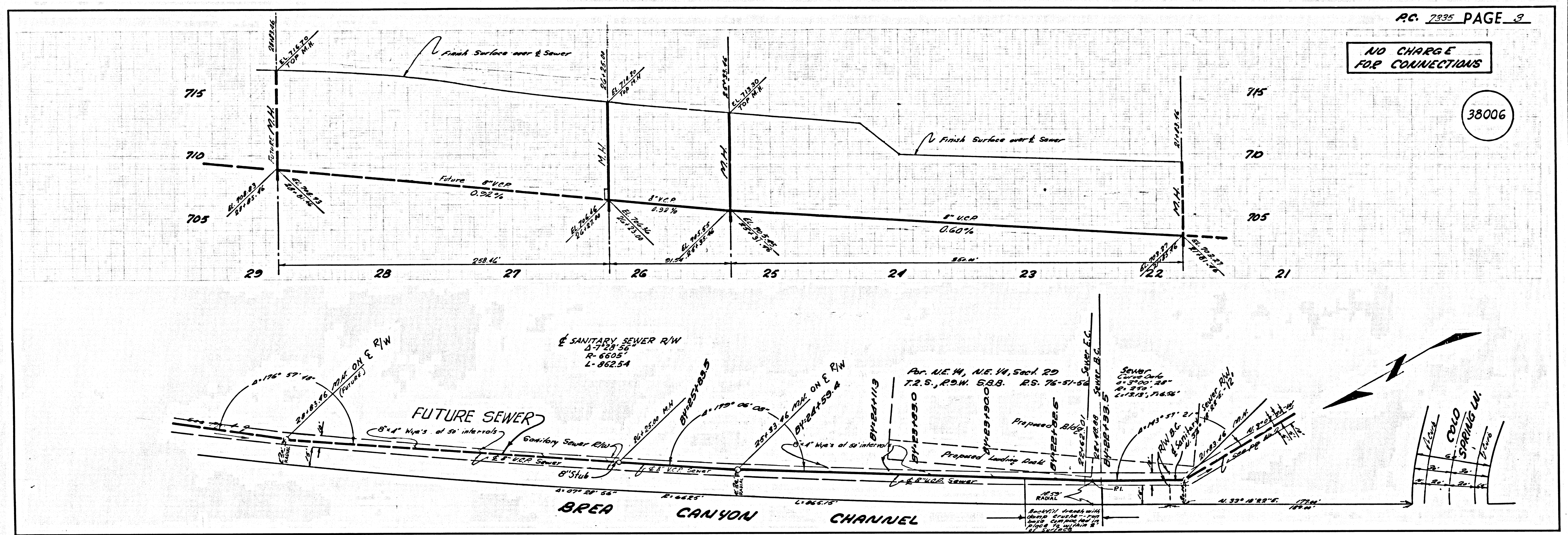
**REVISION**  
 1-25-66 Sanitary Sewer from Sta. 26+27.20 to Sta. 29+24.66, modified and indicated as shown Sanitary Sewer  
 by: *John A. Lambie* 1-26-66  
 Office of the County Engineer, 10483 20th

**COLLECT CHARGES AS INDICATED**  
*John Coloschi*

**APPROVED:**  
*Joseph B. Garcia* 11-15-65  
 INDUSTRIAL WASTE DIVISION  
 COUNTY OF LOS ANGELES

J. N. 0365.51





U.S. & L.A. COUNTY SEWER SHEET NO. 2 SO. CAL. BLUEPRINT CO.