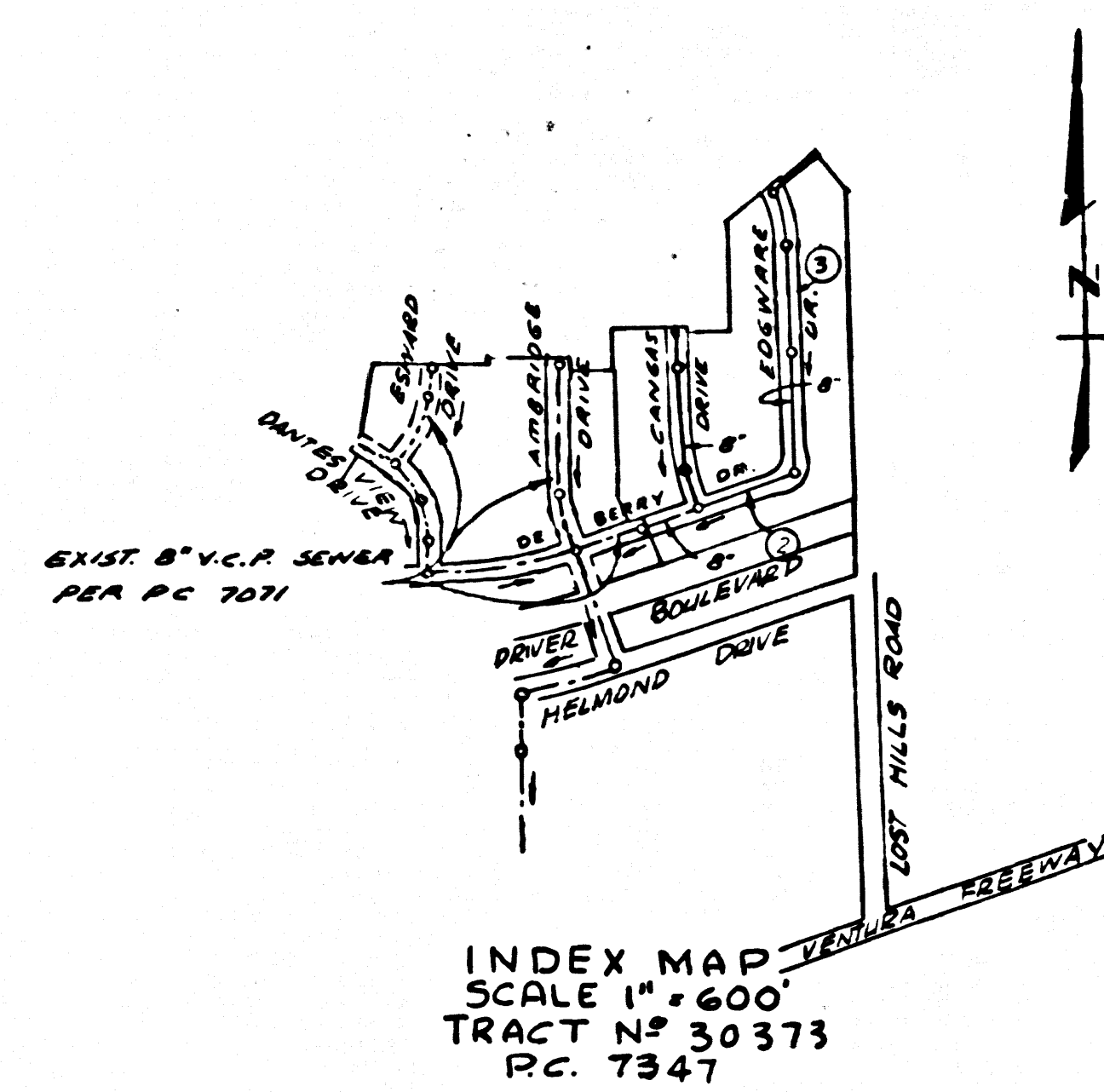


B.M. 5.V.5609 ELEV. 778.878
 CHISELED SQUARES IN CORNER OF CURB
 24.5" IN CORNER (1 FT) LONG VERTICAL
 BOUNDARY 374.365 TO 2
 2.00" W. E. RAYBOLL STREET
 1/4 MILE W. LAS VIRGENES ROAD
 MALIBU QUAD. 1960



TESTING

(a) INFILTRATION AND LEAKAGE TESTS: METHOD USED FOR TESTING WILL BE THE SAME AS LOS ANGELES COUNTY EXCEPT THE FORMULA TO BE USED IS AS FOLLOWS:
 $0.033 \text{ GALLONS/MINUTE/INCH OF DIAMETER/1000 FEET}$
 OR
 $350 \text{ GALLONS/INCH OF DIAMETER/MILE}$

(b) MANHOLE LEAKAGE TESTS: AT THE DISCRETION OF THE DISTRICT'S REPRESENTATIVE ONE MANHOLE OUT OF EVERY TEN MANHOLES AND A MINIMUM OF TWO WILL BE FILLED WITH WATER AND AFTER THREE HOURS WILL BE CHECKED FOR LEAKAGE, WITH AND PUMP IN LEVEE. FOR EVERY ONE MANHOLE NOT PASSING TESTS THIS PROJECT WILL BE TESTED AT THE DISCRETION OF THE DISTRICT'S REPRESENTATIVE.

(c) RIG TESTING: WHERE THE DIFFERENCE IN ELEVATION BETWEEN THE INVERT OF THE UPPER STRUCTURE AND THE INVERT OF THE LOWER STRUCTURE IS GREATER THAN SIX FEET (6') AN RIG TEST SHALL BE MADE.
 THE TIME TAKEN TO LOSE ONE (1) POUND PER SQUARE INCH GRADE PRESSURE FROM THREE (3) POUNDS PER SQUARE INCH GRADE PRESSURE TO TWO (2) POUNDS PER SQUARE INCH GRADE PRESSURE SHALL NOT BE LESS THAN TIMES SHOWN ON THE FOLLOWING TABLE:

MAIN PIPE DIAMETER	MINIMUM TIME LOSS
6" - 8"	1 MINUTE
10" - 20"	2 MINUTES
21" - 30"	3 MINUTES
33" - 36"	4 MINUTES

IF THE TIME IS LESS THAN LISTED IN THE TABLE ABOVE, THE CONTRACTOR SHALL MAKE SUCH REPAIRS AS ARE NECESSARY TO ELIMINATE THE EXCESSIVE LEAKAGE.

DOUBLE SCALE
CALABASAS BLDG. DIST. NO. 91

PROFILE ALIGNMENT AND GRADE OF **P.C. 7347**
SANITARY SEWERS PAGE 1
 TO BE CONSTRUCTED IN

TRACT NO. 30373 39880
PRIVATE CONTRACT NO. 7347

W.S. 90
 2 SHEETS, 4 PAGES
 SCALE: HORIZ. 1" = 40' VERT. 1" = 4'
 MAR., 1968
 PREPARED IN THE OFFICES OF
JENSEN ASSOCIATES ENGINEERS, INC.

BY: *William Jensen*
 REG. E. NO. 12776 I.C.N. 3266
 FOR LEGEND SEE PLAN NO. 5-1

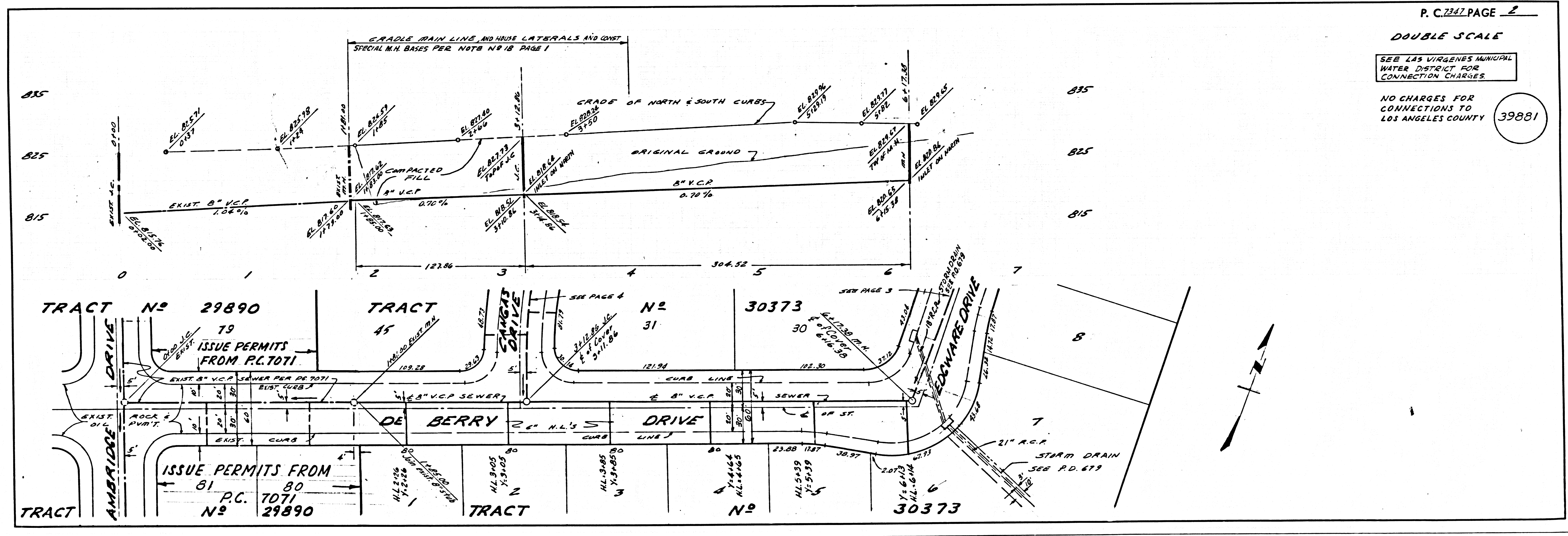
- NOTES**
- PROVIDE STAKES ON THE PROPERTY LINE OR PROPERTY LINES PRODUCED AT RIGHT ANGLES TO THE SEWER LINE AT THE CENTER LINE OF EACH MANHOLE.
 - NO REPRESENTATIVE OF THE COUNTY ENGINEER WILL SURVEY OR LAY OUT ANY PORTION OF THE WORK.
 - THE PRIVATE ENGINEER SHALL FURNISH THE COUNTY ENGINEER WITH GRADE SHEETS AND STATIONING FOR ALL HOUSE LATERALS AND Y BRANCHES AND SHALL PROVIDE STAKES FOR THEM AT THEIR PROPER LOCATIONS WITH STATIONING PLAINLY MARKED. ALL HOUSE LATERALS SHALL BE CONSTRUCTED IN A STRAIGHT ALIGNMENT AT RIGHT ANGLES FROM THE MAIN LINE SEWER EXCEPT AS SHOWN ON THE PLANS. HOUSE LATERALS FROM CHIMNEYS SHALL NOT HAVE AN ANGLE OF LESS THAN 45° WITH THE MAIN LINE SEWER. ANY CHANGE IN ALIGNMENT SHALL BE REQUESTED BY WRITING BY THE PRIVATE ENGINEER.
 - THE PRIVATE ENGINEER SHALL FURNISH THE HOUSE LATERAL INVERT AT THE PROPERTY LINE BELOW THE TOP OF CURB ELEVATION FOR EACH HOUSE LATERAL ON THE GRADE SHEET.
 - NO REVISIONS SHALL BE MADE IN THESE PLANS WITHOUT THE APPROVAL OF THE COUNTY ENGINEER.
 - THE CONTRACTOR SHALL NOTIFY THE CONSTRUCTION DIVISION BY TELEPHONE, MADISON 9-4749, EXT. 8181, AT LEAST TWENTY-FOUR HOURS BEFORE STARTING ANY WORK UNDER THIS CONTRACT.
 - MANHOLES SHALL BE BRICK SEWER STRUCTURES PER S-5, PRECAST CONCRETE MANHOLES PER S-5 OR S-6 EXCEPT AS NOTED.
 - USE STANDARD MANHOLE FRAMES AND COVERS, S-15 EXCEPT AS NOTED.
 - MANHOLE TOPS IN UNIMPROVED RIGHTS-OF-WAY TO BE SIX INCHES ABOVE FINISHED GRADE.
 - USE EXTRA STRENGTH PIPE, ALL PER S STANDARD BIRTH.
 - USE MECHANICAL COMPRESSION JOINTS FOR ALL V.C.P. JOINTS PER SPEC. SECS. 34, 41, 42 & 49.
 - IF A POWER POLE IS WITHIN THREE FEET OF THE SEWER, THE SEWER SHALL BE ENCASED, PER S-23, TWO FEET ON EITHER SIDE FROM THE POINT OF INTERFERENCE.
 - IF DURING THE COURSE OF CONSTRUCTION IT IS DETERMINED THAT THERE IS LESS THAN FOUR FEET OF COVER OVER THE TOP OF A MAIN LINE OR HOUSE LATERAL V.C.P. SEWER WHICH IS NOT INDICATED ON THE PLANS, THE PIPE SHALL BE ENCASED PER S-23, UNLESS OTHERWISE APPROVED BY THE COUNTY ENGINEER.
 - HOUSE LATERALS TO BE CONSTRUCTED WITH INVERTS AT PROPERTY LINE... FEET BELOW CURB GRADE EXCEPT AS NOTED.
 - RESURFACE ALL TRENCHES WITHIN PAVED AREAS TO MEET L.A. COUNTY ROAD DEPT. OR CALIFORNIA STATE HIGHWAY REQUIREMENTS IN ACCORDANCE WITH PERMITS.
 - Construction in Filled Areas**
 (a) An acceptable certification of compaction test results shall be submitted before construction begins. Compaction test results shall be made in accordance with A.S.T.M. Standard Method T-99, 15' & 3' depth.
 (b) No construction is permitted in filled areas where the relative density of compaction is less than 80%.
 (c) If the relative density of compaction is less than 80% all main line and house laterals shall be encased per S-23. Special manhole bases per S-16 are required.
 (d) If the relative density of compaction is 80% or greater, special manhole bases in (c) are not required.
 (e) All State and local trench safety orders will be rigidly enforced.

REVISION	DATE	REVISIONS
REVISION APRIL 18, 1968 CHANGED GRADE PAGE NO. 3 STA. 0+198.23 TO STA. 1+42.13 CHANGED GRADE PAGE NO. 4 STA. 0+00 TO STA. 1+00 APPROVED: <i>John H. Threlkoff</i> OFFICE OF COUNTY ENGINEER D.E. NO. 11086	REVISION Jan. 2, 1968 Add 150.05 FT. of 8" V.C.P. on page between sta 9+82.00 & 11+42.13 APPROVED: <i>John H. Threlkoff</i> OFFICE OF COUNTY ENGINEER D.E. NO. 11086	
REVISION APRIL 18, 1968 Lowered sewer line 100 feet on Cargas Drive & Edgeware Drive. APPROVED: <i>John H. Threlkoff</i> OFFICE OF COUNTY ENGINEER D.E. NO. 11086	DATE APPROVED: <i>John H. Threlkoff</i> OFFICE OF COUNTY ENGINEER D.E. NO. 11086	REVISIONS LOWERED SEWER GRADES ON DE BERRY DRIVE, CARGAS DRIVE AND EDGEWARE DRIVE. RE-DESIGNED STORM DRAIN. APPROVED: <i>John H. Threlkoff</i> OFFICE OF COUNTY ENGINEER D.E. NO. 11086

COLLECT CHARGES AS INDICATED
William Jensen

NOTE
 GRADES TO WHICH THIS IMPROVEMENT IS TO BE CONSTRUCTED ARE SHOWN ON PLANS AND PROFILES. GRADE POINTS FOR TOP OF CURB, CENTER LINE OF STREETS, OR CENTER LINE OF ALLEYS ARE SHOWN BY CIRCLES ON PROFILES. AT ALL POINTS BETWEEN DESIGNATED POINTS THE GRADE SHALL BE ESTABLISHED SO AS TO CONFORM TO A STRAIGHT LINE DRAWN BETWEEN SAID DESIGNATED POINTS. ELEVATIONS ARE IN FEET ABOVE U.S.C. & G.S. SEA LEVEL. EXCEPT AS NOTED OTHERWISE, ALL GRADES ARE TO BE CONSTRUCTED TO THE CENTERLINE OF THE IMPROVEMENTS. (See Remarks)
 THIS DRAWING AND THE DATA HEREON ARE HEREBY MADE A PART OF THE SPECIFICATIONS. (See Remarks)
 THE CONTRACTOR SHALL BE RESPONSIBLE FOR OBTAINING ALL NECESSARY PERMITS FROM THE L.A. COUNTY ENGINEER AND SHALL BE PROSECUTED ONLY IN THE PRESENCE OF THE COUNTY ENGINEER.
 APPROVAL OF THIS PLAN BY THE COUNTY OF LOS ANGELES DOES NOT CONSTITUTE A REPRESENTATION AS TO THE ACCURACY OF THE LOCATION OF OR THE EXISTENCE OR NON-EXISTENCE OF ANY UNDERGROUND UTILITY PIPE, OR STRUCTURE WITHIN THE LIMITS OF THE PROJECT. THIS NOTE APPLIES TO ALL NOTES.
 IF WORK IS TO BE DONE IN A STATE HIGHWAY, A PERMIT MUST BE OBTAINED FROM THE STATE OF CALIFORNIA, DIVISION OF HIGHWAYS, 130 SOUTH SPRING STREET, LOS ANGELES, CALIFORNIA.

COUNTY OF LOS ANGELES, CALIFORNIA
JOHN A. LAMBIE, COUNTY ENGINEER
 APPROVED BY: *Robert S. Kellum*
 SANITATION ENGINEER
 SUBMITTED BY: *John H. Threlkoff*
 REGIONAL ENGINEER
 CHECKED BY: *William Jensen*
 REG. E. NO. 12653
LAS VIRGENES MUNICIPAL WATER DISTRICT
 APPROVED BY: *Charles Marshall*
 OFFICE ENGINEER
 J.N. 2365-60



P.C. 7347 PAGE 2
DOUBLE SCALE
 SEE LAS VIRGENES MUNICIPAL WATER DISTRICT FOR CONNECTION CHARGES
 NO CHARGES FOR CONNECTIONS TO LOS ANGELES COUNTY 39881

