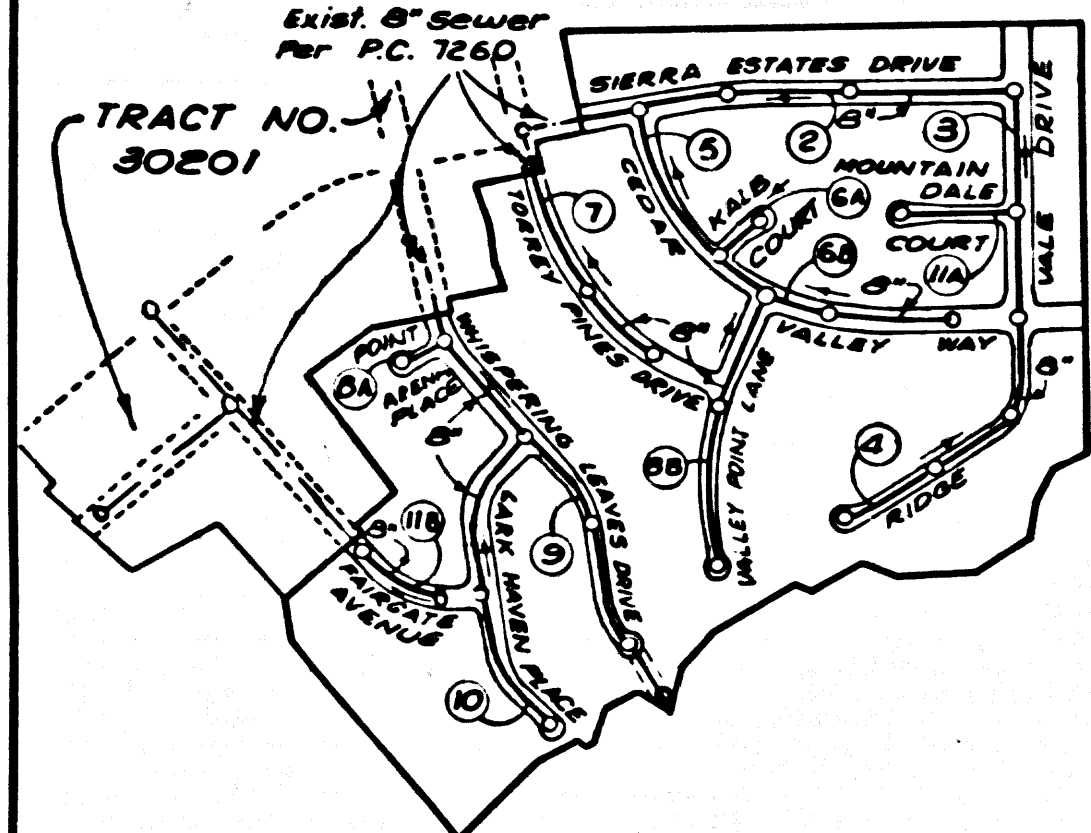


B.M. S.L. 942 ELEV. 1423.098  
 U.S. 163.500' from station 100' to 406' 19.65" in N 1/4  
 of 1/4 Sec. 16, T. 11 N., R. 23 E., S. 4  
 444' 55" under Sierra Hwy. Bridge, 0.6 mi.  
 S. of San Gabriel Co. Sta. E. W. of N. 1/4  
 4-5' Elyote Sierra Hwy.  
**NEWHALL QUAD. 19 58**

REVISIONS				
Page	View	Description	Date	Approval
6	B	Extend main line in Cedar Valley Way 87' to 100' (23.20' below 1st 87' to Cedar Valley Way, remove 1st 87' lateral from Ridgevale Dr.	9-24-65	R. J. Lambie C.E. 13066



**INDEX MAP**  
 R.C. 7348  
 TRACT NO. 30394

Numbers in circles indicate page numbers.

Any connection to the sewer system of County Sanitation District, provided directly or indirectly by the sewers shown on these plans, shall be considered a temporary connection until all area sewer is annexed to said district, at which time the connection shall become permanent. If for any reason the annexation to the district of any area sewer in the district will be required to disconnect unless a contract is entered into with the district providing for the disposal of sewage from this area.

NO CONNECTIONS FOR THE DISPOSAL OF INDUSTRIAL WASTES SHALL BE MADE TO SEWERS SHOWN ON THESE DRAWINGS WITHOUT WRITTEN PERMISSION FROM THE CHIEF ENGINEER AND GENERAL MANAGER OF THE COUNTY SANITATION DISTRICTS.

**DOUBLE SCALE**  
**NEWHALL BLDG. DIST. NO. 8.2**

PROFILE ALIGNMENT AND GRADE OF  
**SANITARY SEWERS** PAGE 1  
 CONSTRUCTED IN  
**TRACT NO. 30394**

**PRIVATE CONTRACT NO. 7348**

W.S. 02  
 6 SHEETS, 12 PAGES  
 SCALE: VERT. 1" = 8'  
 HORIZ. 1" = 40'  
 JUNE, 1965

PREPARED IN THE OFFICES OF  
**PRECISION INCORPORATED**  
 J. E. Carlet  
 REG. C.E. NO. 6448

37625

FOR LEGEND SEE PLAN NO. S-1

- NOTES:
- PROVIDE STAKES ON THE PROPERTY LINE OR PROPERTY LINES PRODUCED AT RIGHT ANGLES TO THE SEWER LINE AT THE CENTER LINE OF EACH MANHOLE.
  - NO REPRESENTATIVE OF THE COUNTY ENGINEER WILL SURVEY OR LAY OUT ANY PORTION OF THE WORK.
  - THE PRIVATE ENGINEER SHALL FURNISH THE COUNTY ENGINEER WITH GRADE SHEETS AND STATIONING FOR ALL HOUSE LATERALS AND Y BRANCHES AND SHALL PROVIDE STAKES FOR THEM AT THEIR PROPER LOCATIONS WITH STATIONING PLAINLY MARKED. ALL HOUSE LATERALS SHALL BE CONSTRUCTED IN A STRAIGHT ALIGNMENT AT RIGHT ANGLES FROM THE MAIN LINE SEWER EXCEPT AS SHOWN ON THE PLANS.
  - THE ALIGNMENT SHALL BE REVISITED BY THE PRIVATE ENGINEER.
  - THE PRIVATE ENGINEER SHALL FURNISH THE HOUSE LATERAL DEPTH AT THE PROPERTY LINE BELOW THE TOP OF CURB ELEVATION FOR EACH HOUSE LATERAL ON THE GRADE SHEET.
  - NO REVISIONS SHALL BE MADE IN THESE PLANS WITHOUT THE APPROVAL OF THE COUNTY ENGINEER.
  - THE CONTRACTOR SHALL NOTIFY THE CONSTRUCTION DIVISION BY TELEPHONE, SECTION 9-47.47, EXT. 81551, AT LEAST TWENTY-FOUR HOURS BEFORE STARTING ANY WORK UNDER THIS CONTRACT.
  - MANHOLES IN LOCATION STRUCTURES PER S-2, PRECAST CONCRETE MANHOLES PER S-3 OR S-6 MAY BE USED AS AN ALTERNATE IN LOCATIONS APPROVED BY THE COUNTY ENGINEER.
  - USE STANDARD MANHOLE FRAMES AND COVERS, S-15, EXCEPT AS NOTED.
  - MANHOLE DEPTH SHALL BE SHOWN ON WAY TO BE SIX INCHES ABOVE FINISHED GRADE.
  - USE EXTRA STRENGTH PIPE. ALL PIPE IS STANDARD DEPTH EXCEPT AS NOTED.
  - USE MECHANICAL COMPRESSION JOINTS FOR ALL V.C.P. JOINTS PER SPECS., SECT. 34, 41, 648.
  - IF A POWER POLE IS WITHIN THREE FEET OF THE SEWER, THE SEWER SHALL BE ENCASED, PER S-25, TWO FEET ON EITHER SIDE FROM THE POINT OF INTERFERENCE.
  - IF DURING THE COURSE OF CONSTRUCTION IT IS DETERMINED THAT THERE IS LESS THAN FOUR FEET OF COVER OVER THE TOP OF A MAIN LINE OR HOUSE LATERAL V.C.P. SEWER WHICH IS NOT INDICATED ON THE PLANS, THE PIPE SHALL BE ENCASED PER S-25, UNLESS OTHERWISE PROVIDED BY THE COUNTY ENGINEER.
  - HOUSE LATERALS TO BE CONSTRUCTED WITH INVERTS AT PROPERTY LINE... FEET BELOW CURB GRADE
  - REINFORCE ALL TRENCHES WITH PAVED AREAS TO MEET L.A. COUNTY ROAD DEPT. REQUIREMENTS IN ACCORDANCE WITH PERMITS.
  - FOR ALLOWABLE LEAKAGE TEST USE FORMULA NO. 2, SPECS. SEC. 54.
  - IF A-NO CONSTRUCTION WILL BE PERMITTED IN FILLED AREAS UNLESS ACCEPTABLE CERTIFICATION IS SUBMITTED TO THE CONSTRUCTION DIVISION OF THE COUNTY ENGINEERS DEPT. THAT RELATIVE COMPACTION IS GREATER THAN 80%.
  - IF COMPACTION IS LESS THAN 80% THE SEWERS MUST BE CRADLED AS SHOWN ON THE PLANS PER S-23 (SPECIAL).
  - IF COMPACTION IS GREATER THAN 80% CRADLING IS NOT REQUIRED.
  - UPON ACCEPTABLE CERTIFICATION TO THE CONSTRUCTION DIVISION OF THE COUNTY ENGINEER THAT RELATIVE COMPACTION IS GREATER THAN 80%, CURBS PER S-14 WILL NOT BE REQUIRED.
  - ALL STATE AND LOCAL TRENCH SAFETY ORDERS WILL BE RIGIDLY ENFORCED.
  - ON GRADES OF 80% OR MORE, CONSTRUCT ANCHOR BLOCKS PER S-84.

GRADES TO WHICH THIS IMPROVEMENT IS TO BE CONSTRUCTED ARE SHOWN ON PLANS AND PROFILES. GRADE POINTS FOR TOP OF CURBS, CENTER LINE OF STREETS, OR CENTER LINE OF ALLEYS ARE SHOWN BY CIRCLES ON PROFILES. AT ALL POINTS BETWEEN DESIGNATED ELEVATIONS ARE IN FEET ABOVE U.S.C. & G.S. SEA LEVEL DATUM OF 1929. THIS DRAWING AND THE DATA HEREON ARE ISSUED AS PART OF THE SPECIFICATIONS. WORK SHALL BE CONSTRUCTED ACCORDING TO STANDARD SPECIFICATIONS DATED 12/27/65, SEE ON FILE IN THE OFFICE OF THE COUNTY ENGINEER, DISTRICT OFFICE NO. 8, AND PER TO THE COUNTY ENGINEER, ROOM 330, COUNTY ENGINEERING BUILDING, 100 WEST SECOND STREET, LOS ANGELES, CALIFORNIA. APPROVAL OF THIS PLAN BY THE COUNTY OF LOS ANGELES DOES NOT CONSTITUTE A REPRESENTATION AS TO THE ACCURACY OF THE LOCATION OR THE EXISTENCE OR NON-EXISTENCE OF ANY UNDERGROUND UTILITY PIPE, OR STRUCTURE WITHIN THE LIMITS OF THIS WORK TO BE DONE IN A STATE HIGHWAY. A PERMIT MUST BE OBTAINED FROM THE STATE OF CALIFORNIA, DIVISION OF HIGHWAYS, 120 SOUTH SPRING STREET, LOS ANGELES, CALIFORNIA.

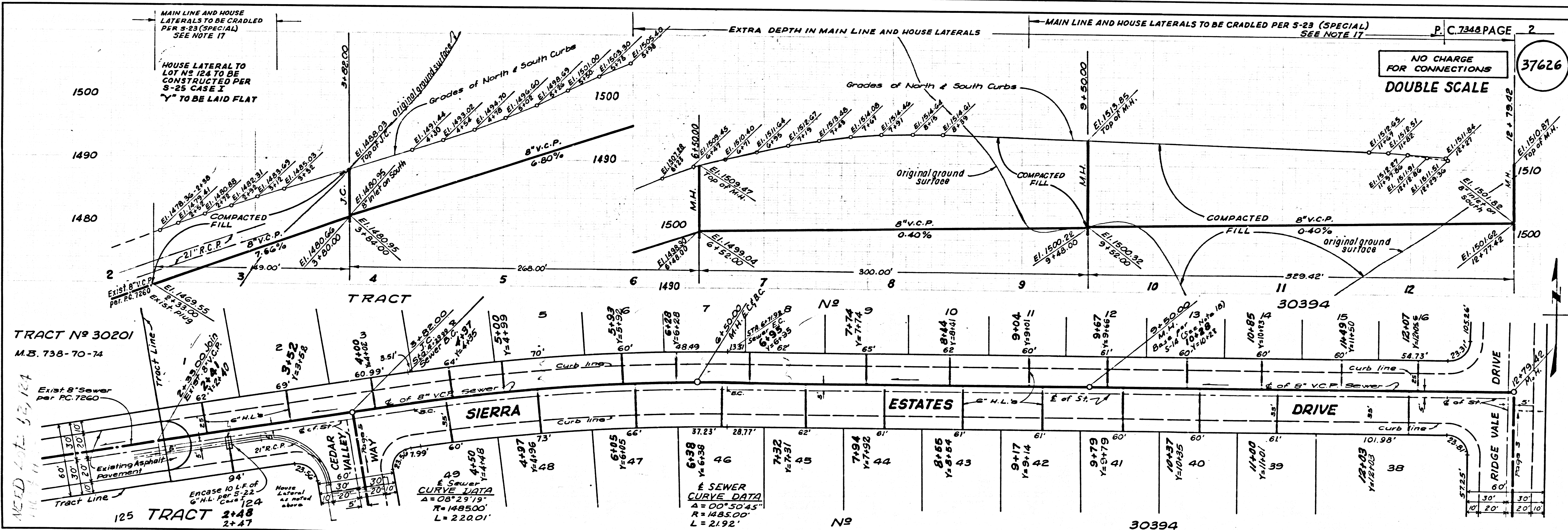
COUNTY OF LOS ANGELES, CALIFORNIA  
 JOHN A. LAMBIE, COUNTY ENGINEER  
 APPROVED BY: [Signature] SANITATION ENGINEER  
 J. D. PARKHURST, CHIEF ENGINEER  
 APPROVED BY: [Signature] DISTRICT OFFICE ENGINEER

CHECKED BY: [Signature] REG. C.E. NO. 13716

J. N. 0365.61  
 R.C.E. NO. 8448

**COLLECT CHARGES AS INDICATED**  
 Richard P. [Signature] 7-25-65

**NOTICE TO CONTRACTORS**  
 The existence and location of any underground utility pipes or structures shown on these plans are obtained by a search of the available records. To the best of my knowledge, there are no existing utilities except as shown on these plans. The Contractor is required to take due precautionary measures to protect the utility lines not of records or not shown on these plans.



**DOUBLE SCALE**  
**NO CHARGE FOR CONNECTIONS**  
 37626

TRACT NO. 30201  
 M.B. 738-70-74

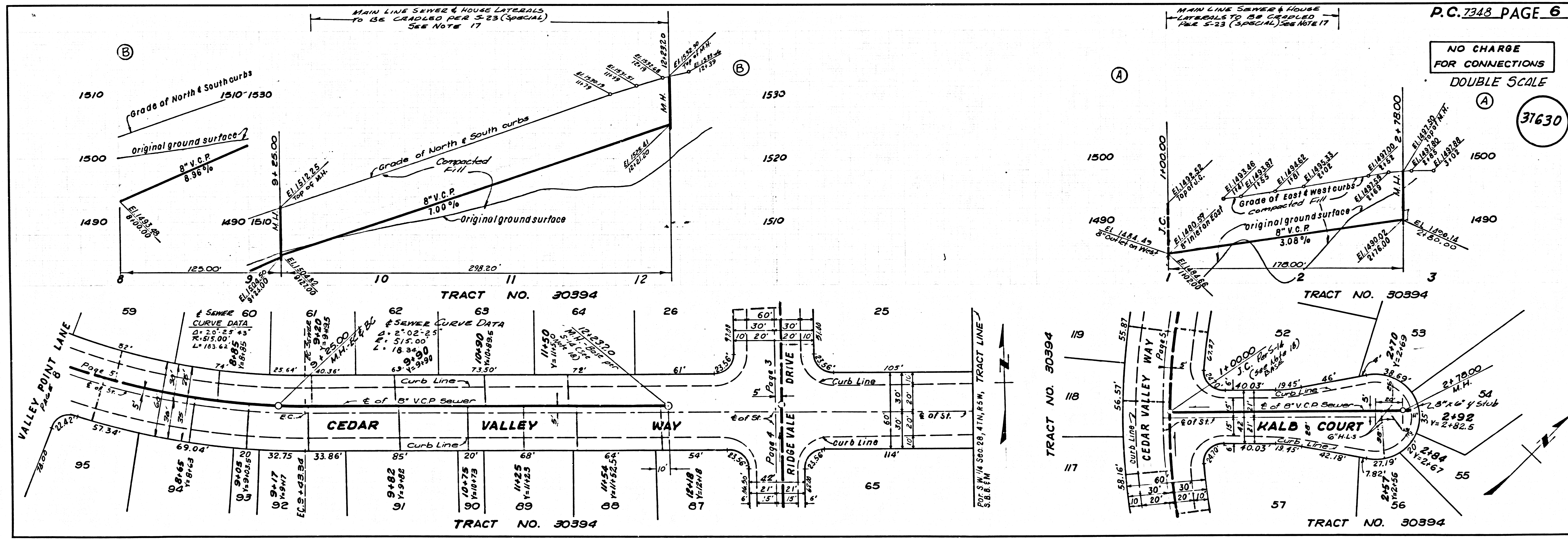
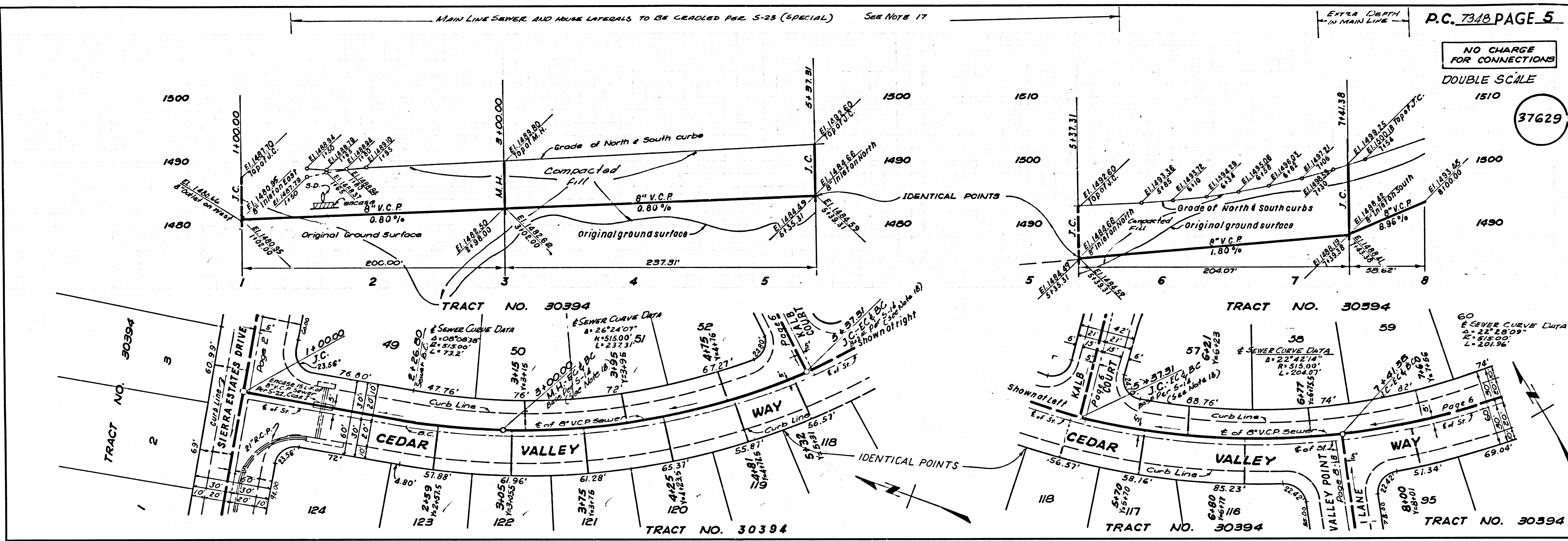
TRACT 2+48  
 2+47

**SEWER CURVE DATA**  
 Δ = 00° 50' 45"  
 R = 1485.00'  
 L = 2192'



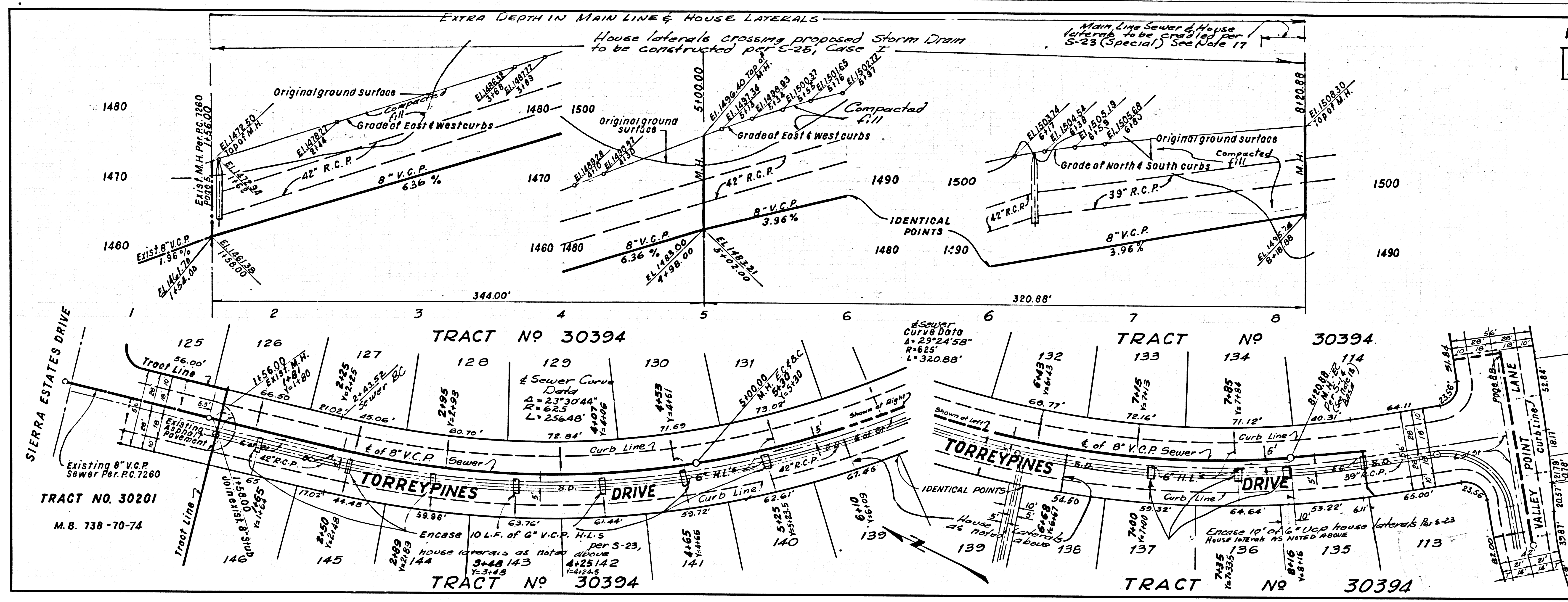






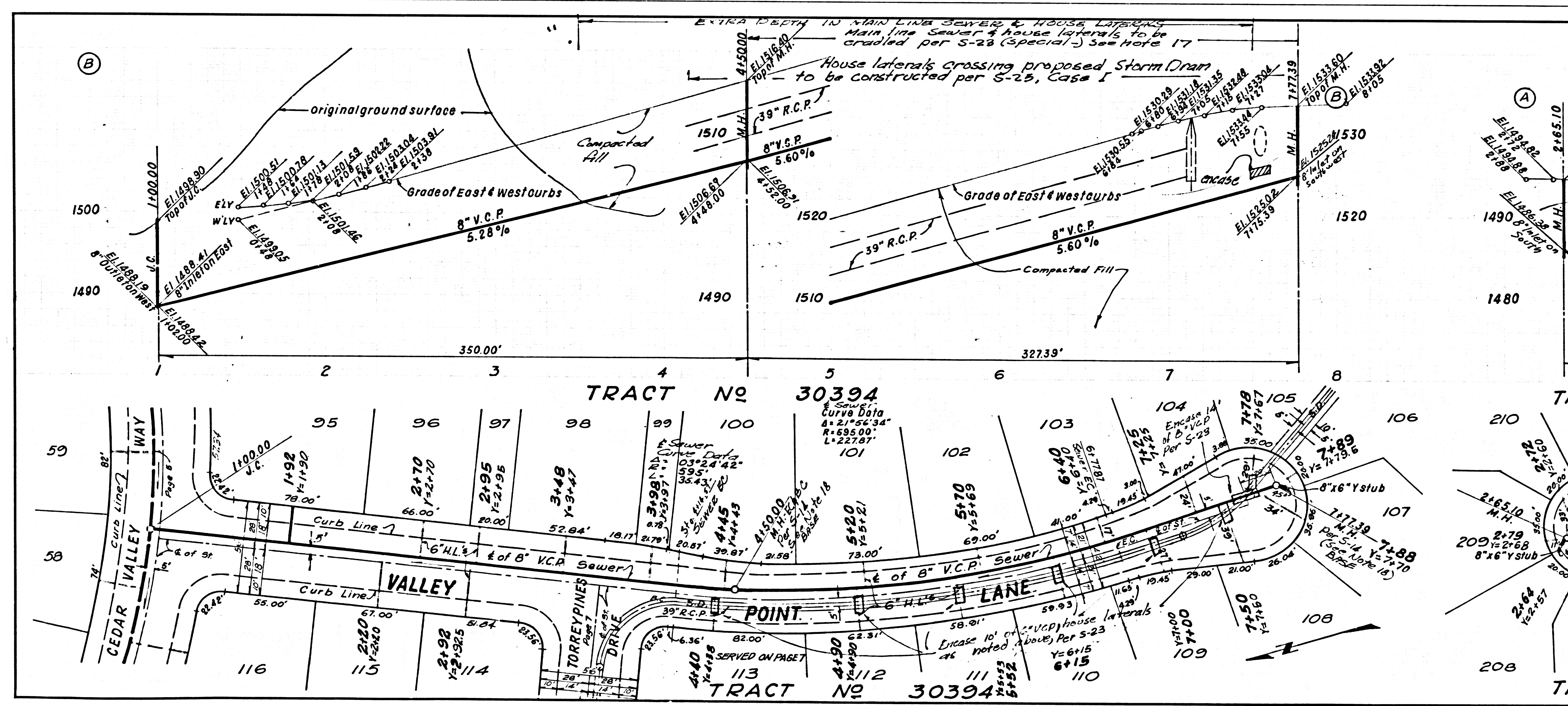
NAE 17551 LA COUNTY SEWER SHEET NO. 2 SO. CAL. BLUEPRINT CO.





P.C. 734A PAGE 7  
 NO CHARGE FOR CONNECTIONS  
 DOUBLE SCALE

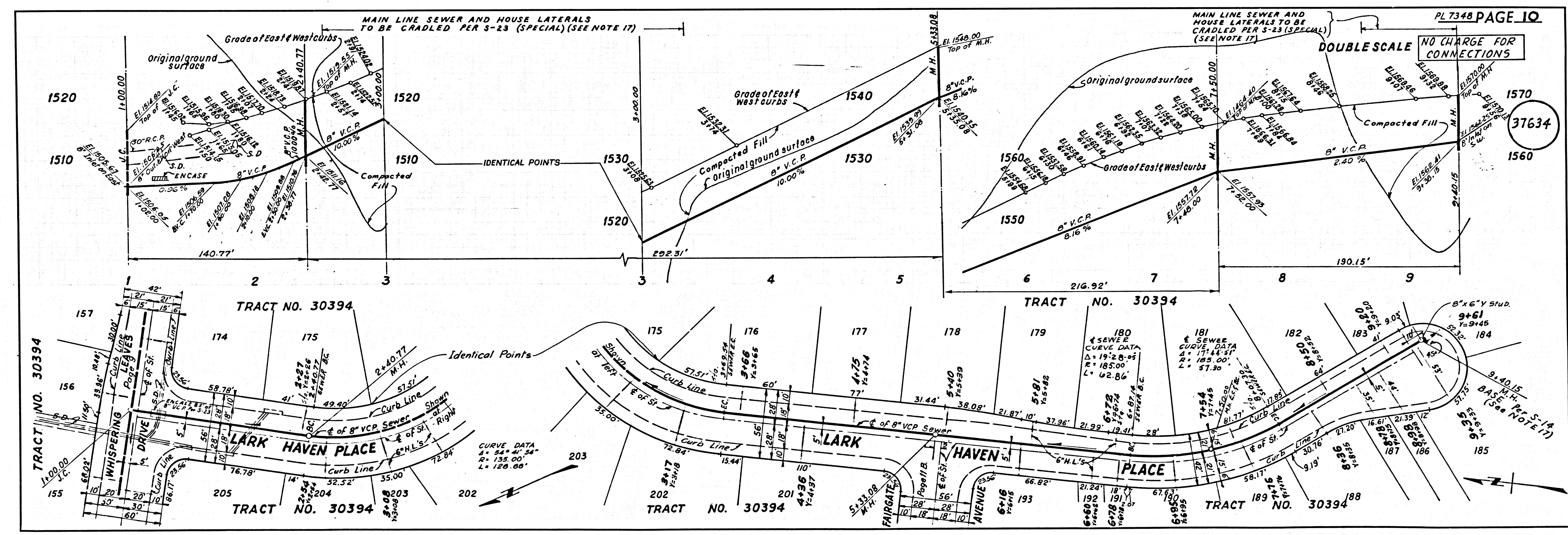
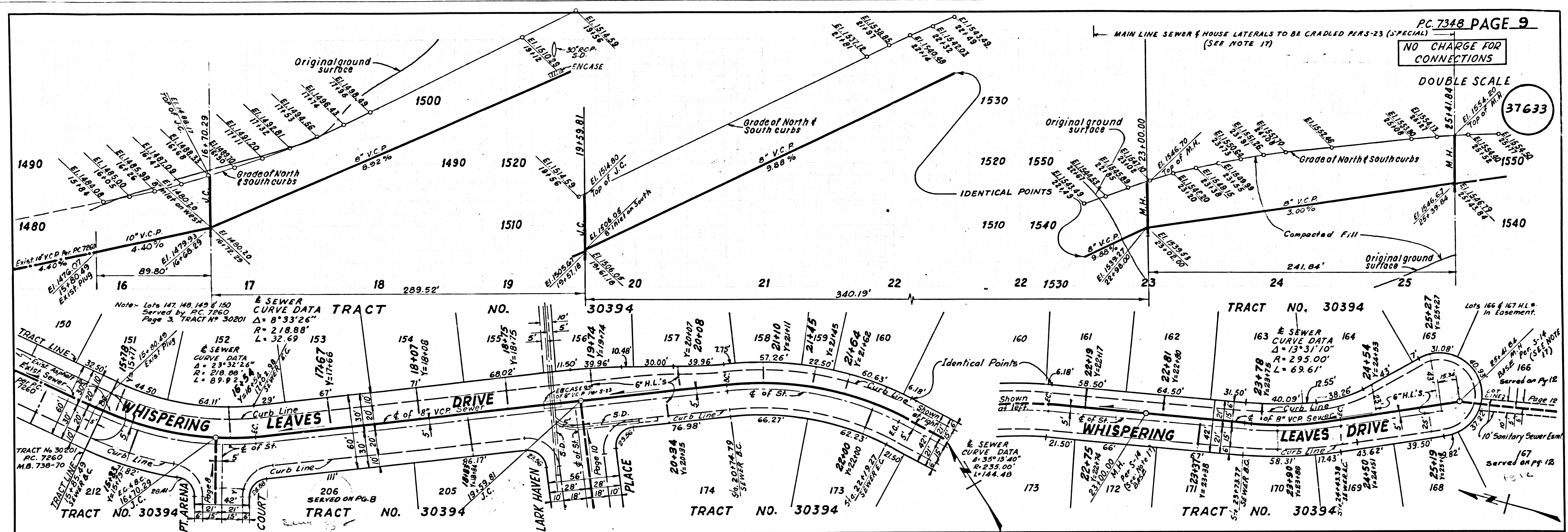
37631



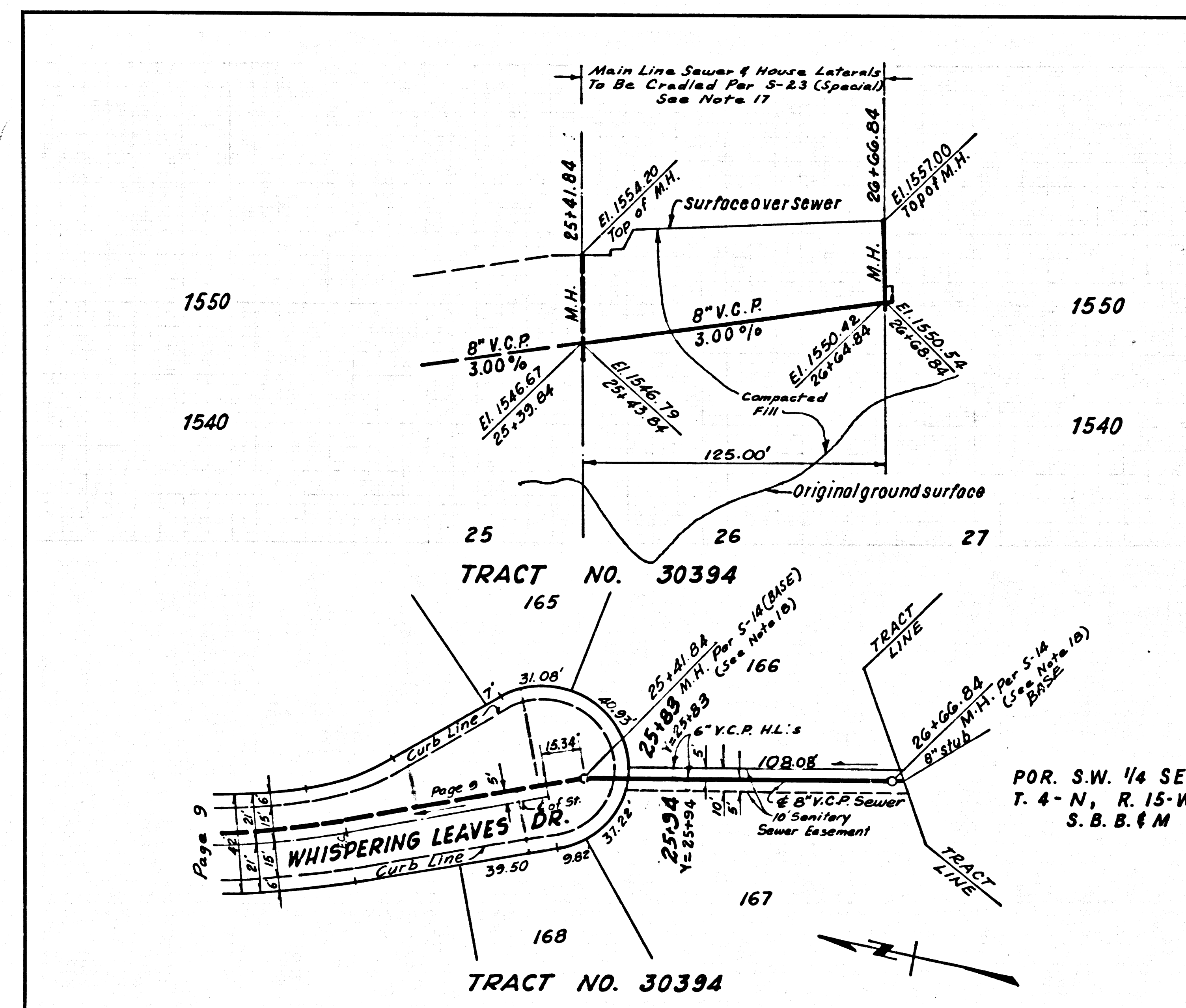
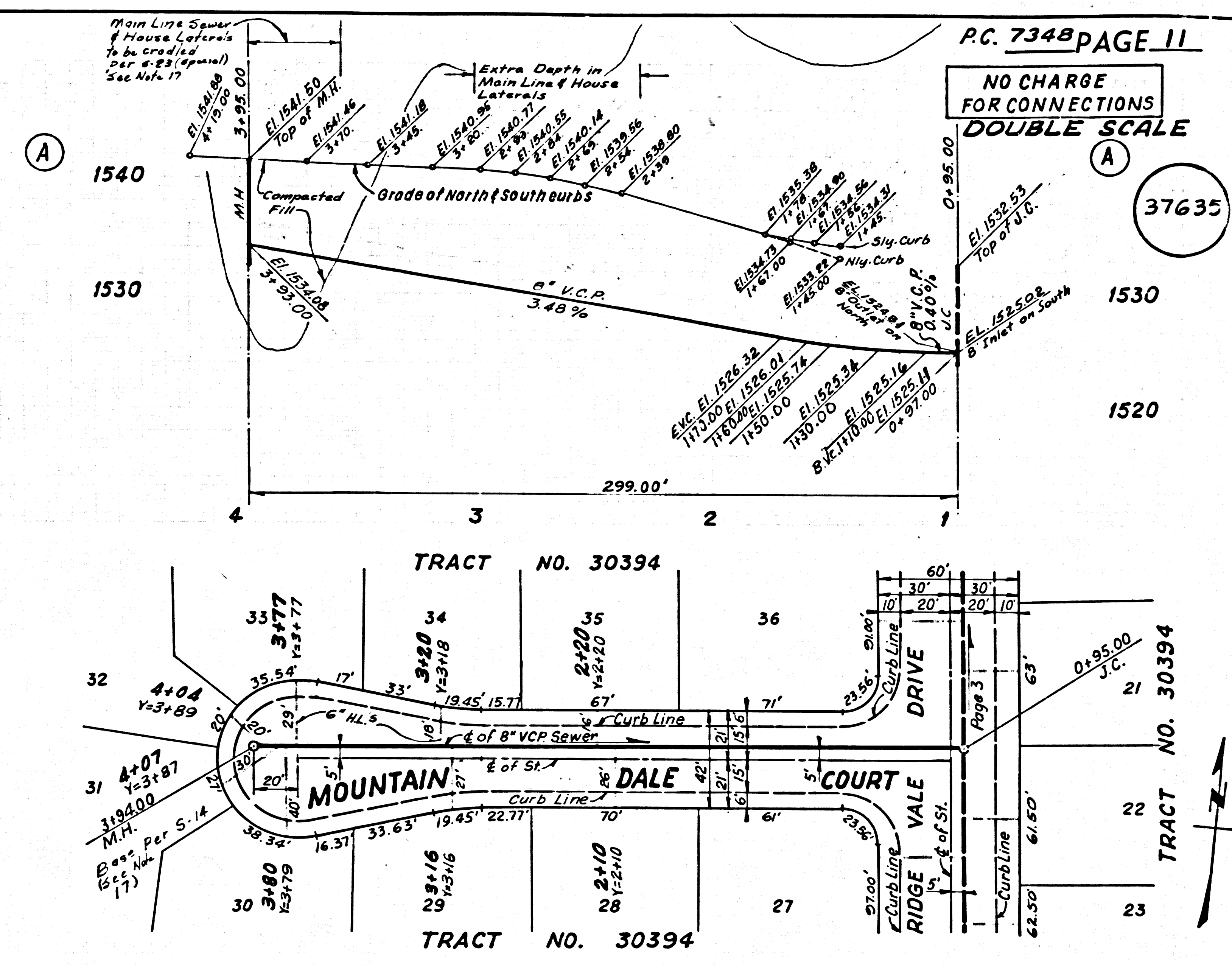
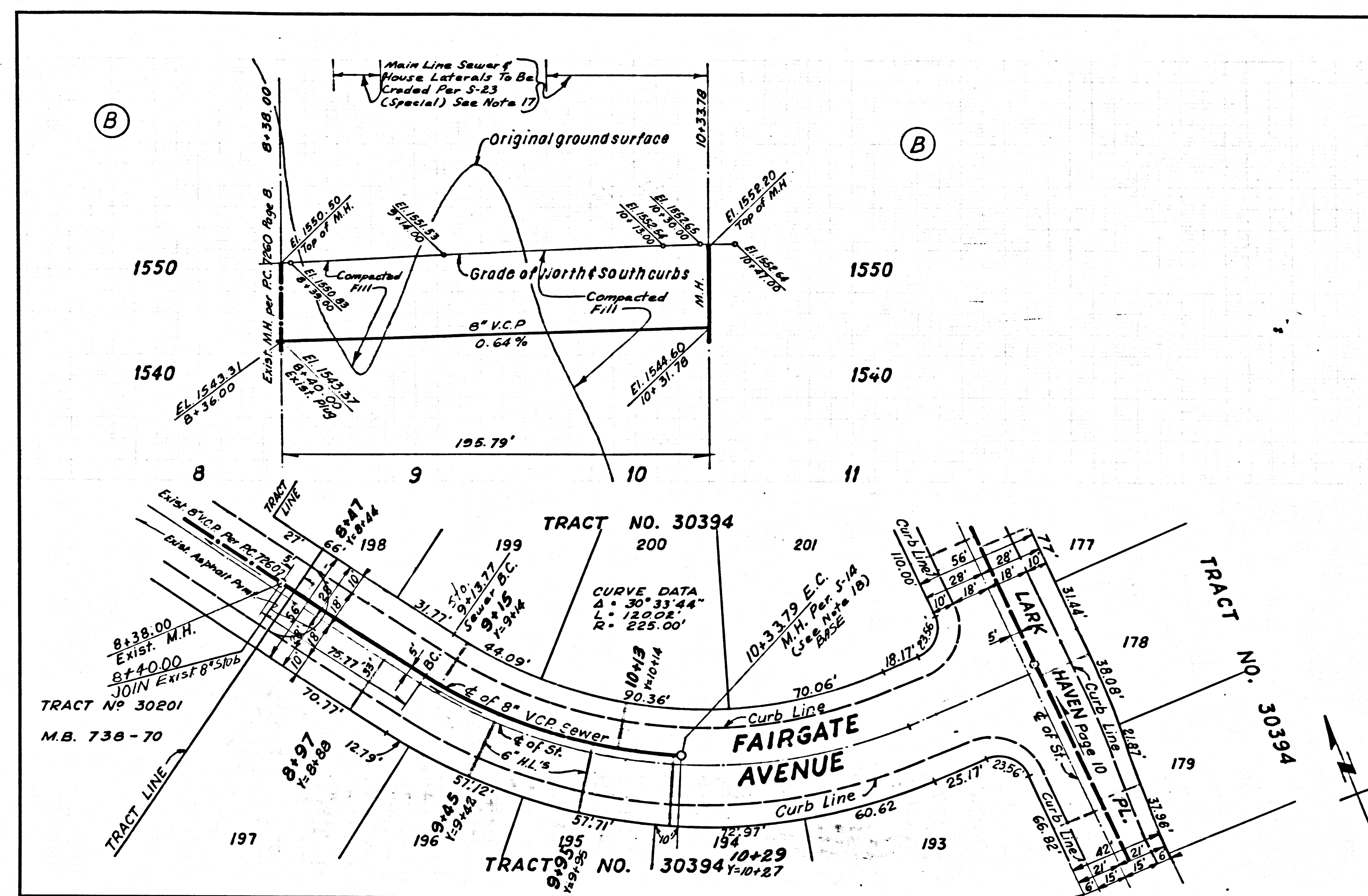
P.C. 734A PAGE 8  
 NO CHARGE FOR CONNECTIONS  
 DOUBLE SCALE

37632









P.C. 7348 PAGE 11  
NO CHARGE FOR CONNECTIONS  
DOUBLE SCALE

37635

P.C. 7348 PAGE 12  
NO CHARGE FOR CONNECTIONS  
DOUBLE SCALE

37636

P.O.R. S.W. 1/4 SEC.  
T. 4 - N., R. 15 - W  
S.B.B. & M