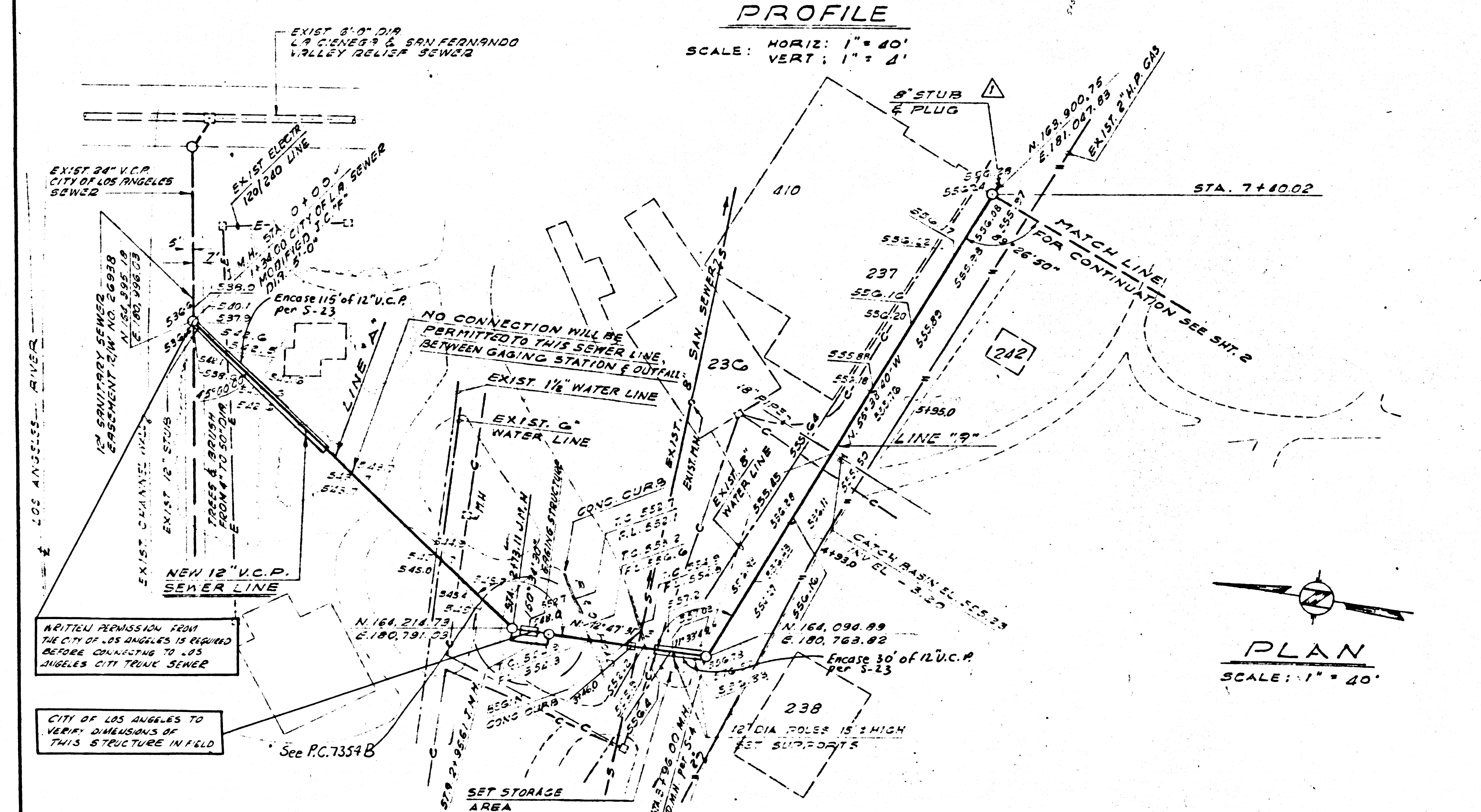


PROFILE
SCALE: HORIZ: 1" = 40'
VERT: 1" = 4'



PLAN
SCALE: 1" = 40'

37302

HL	HL	REVISIONS	DATE
J.B.	N.H.	ADDED 2.00' MIN. SLOPE	5/14/65
N.W.	N.H.	STA 7+20.00 EXCEEDS LINE 18\"/>	
CHAS	BY	CHANGE TO 18\"/>	

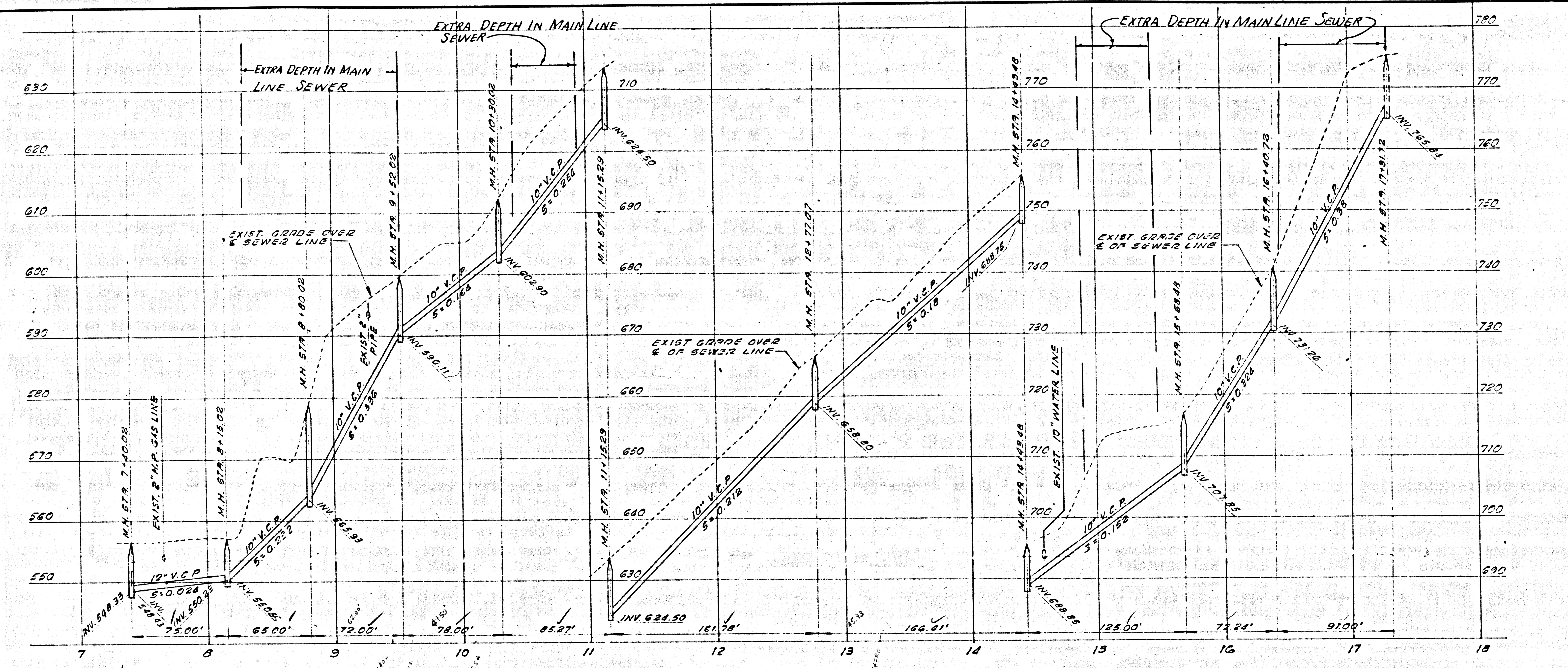
QE 812 WEST EIGHTH STREET, LOS ANGELES, CALIFORNIA
QUINTON ENGINEERS, LTD.
 PLANNING • ENGINEERING • ARCHITECTURE

MCA INC.
 100 UNIVERSAL CITY PLAZA
 UNIVERSAL CITY, CALIF.

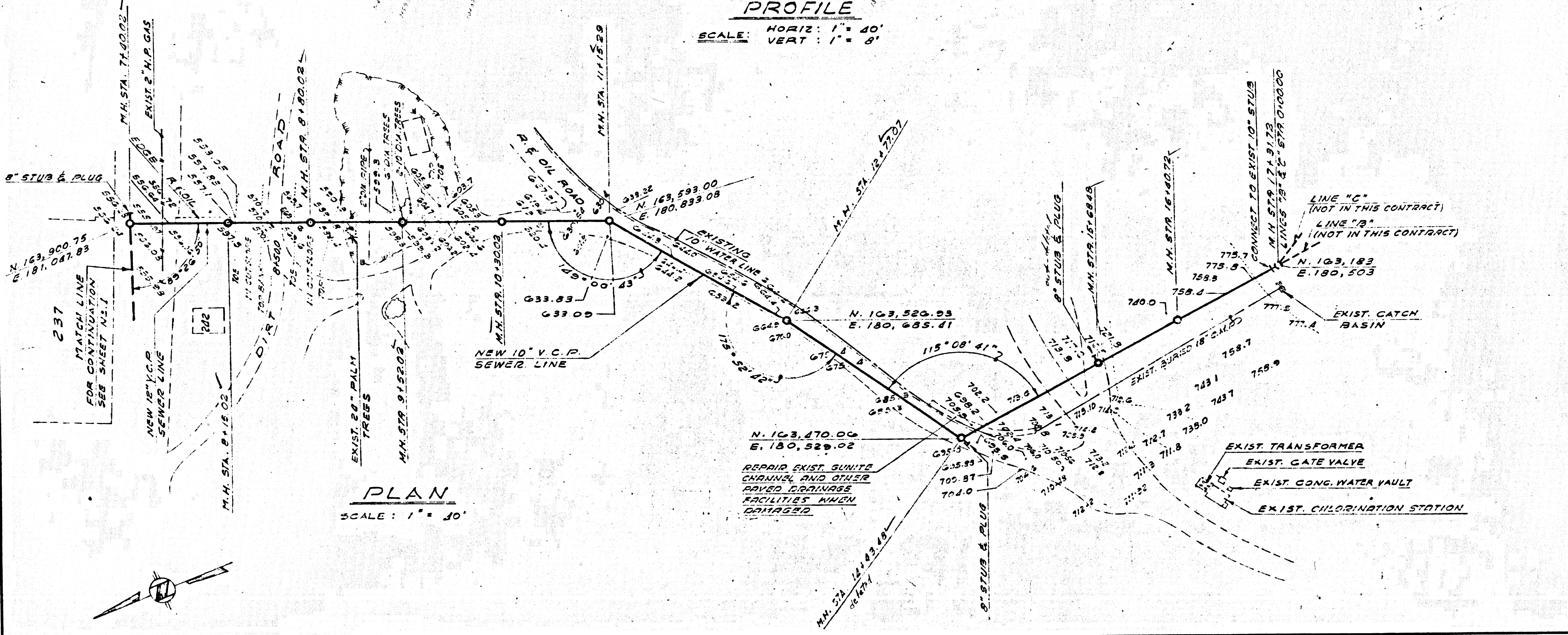
OUTFALL SEWER
 LINE "A"
 PLAN & PROFILES
 STA. 0+00.00 TO STA. 7+40.02

DESIGNED	LIBRYAN	DATE	5/14/65
DRAWN	J.A. CHWENK	DATE	5/14/65
CHECKED	B. SIVKIN	DATE	
APPROVED	<i>H. L. L...</i>	DATE	
PROJECT NO.	64312-L	DWG. NO.	D-C-2
SCALE		BY	HL

37303



PROFILE
SCALE: HORIZ: 1" = 40'
VERT: 1" = 8'



PLAN
SCALE: 1" = 30'

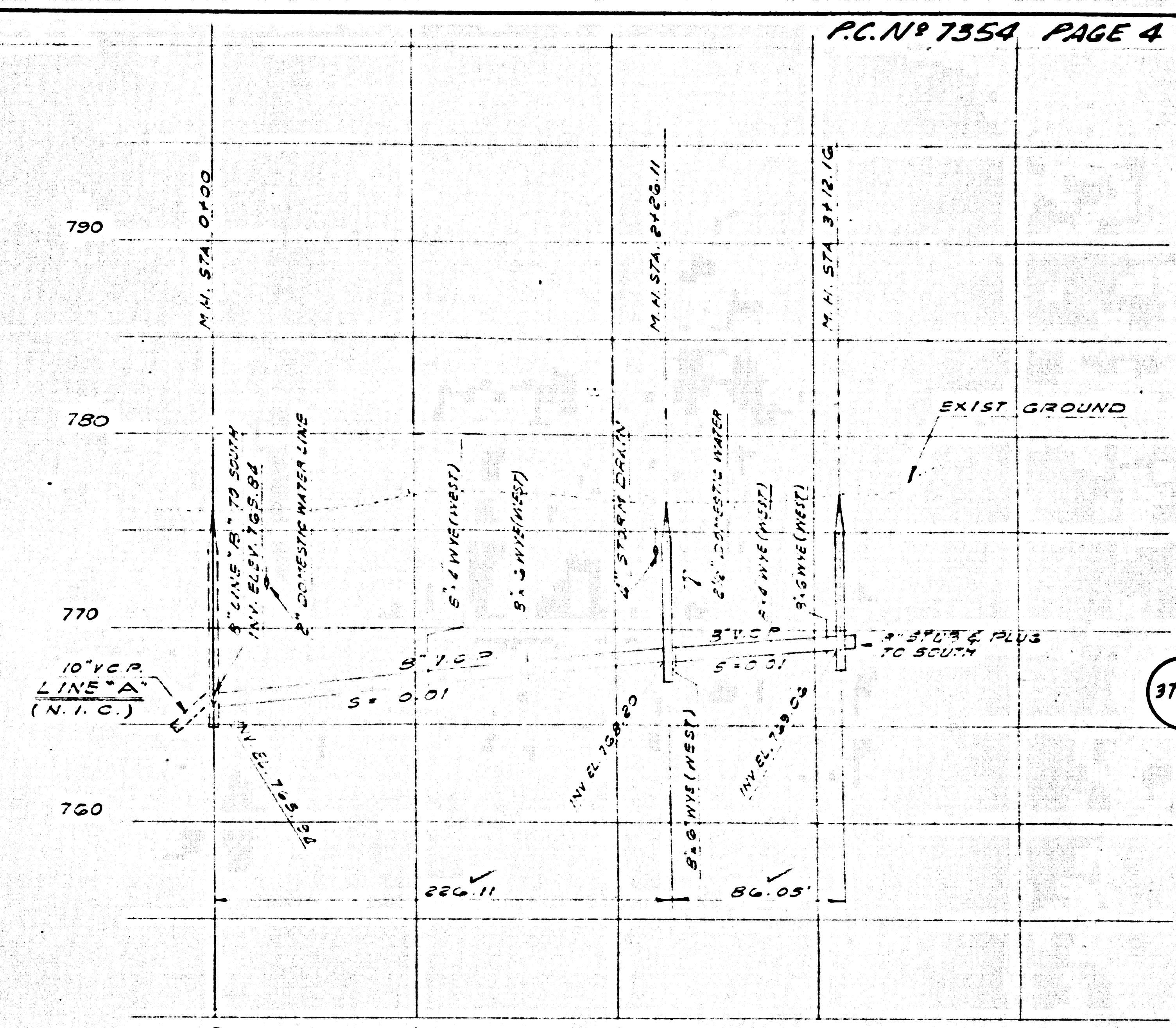
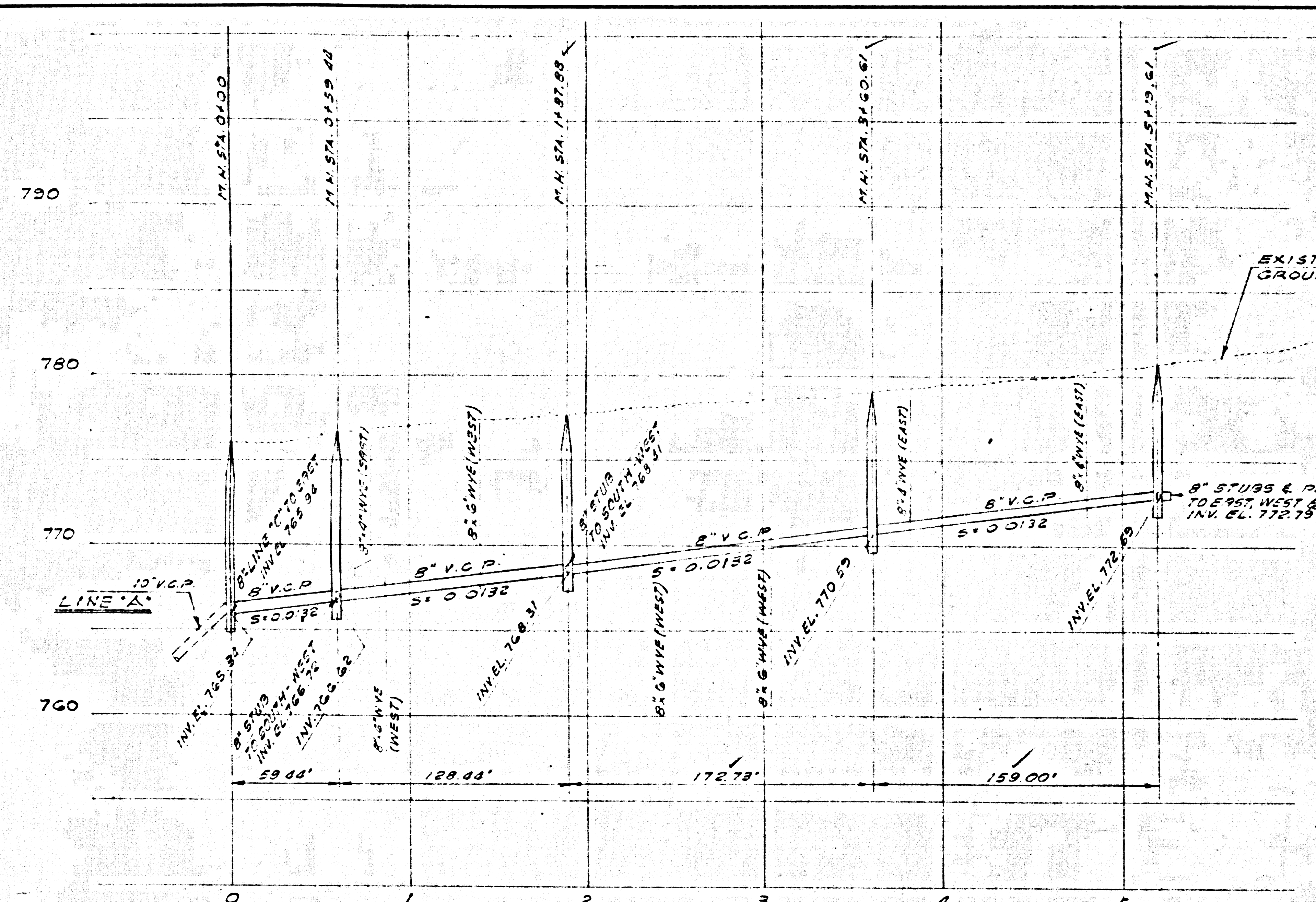
REVISION	DATE	BY	CHKD

QE
 812 WEST EIGHTH STREET, LOS ANGELES, CALIFORNIA
QUINTON ENGINEERS, LTD.
 PLANNING • ENGINEERING • ARCHITECTURE

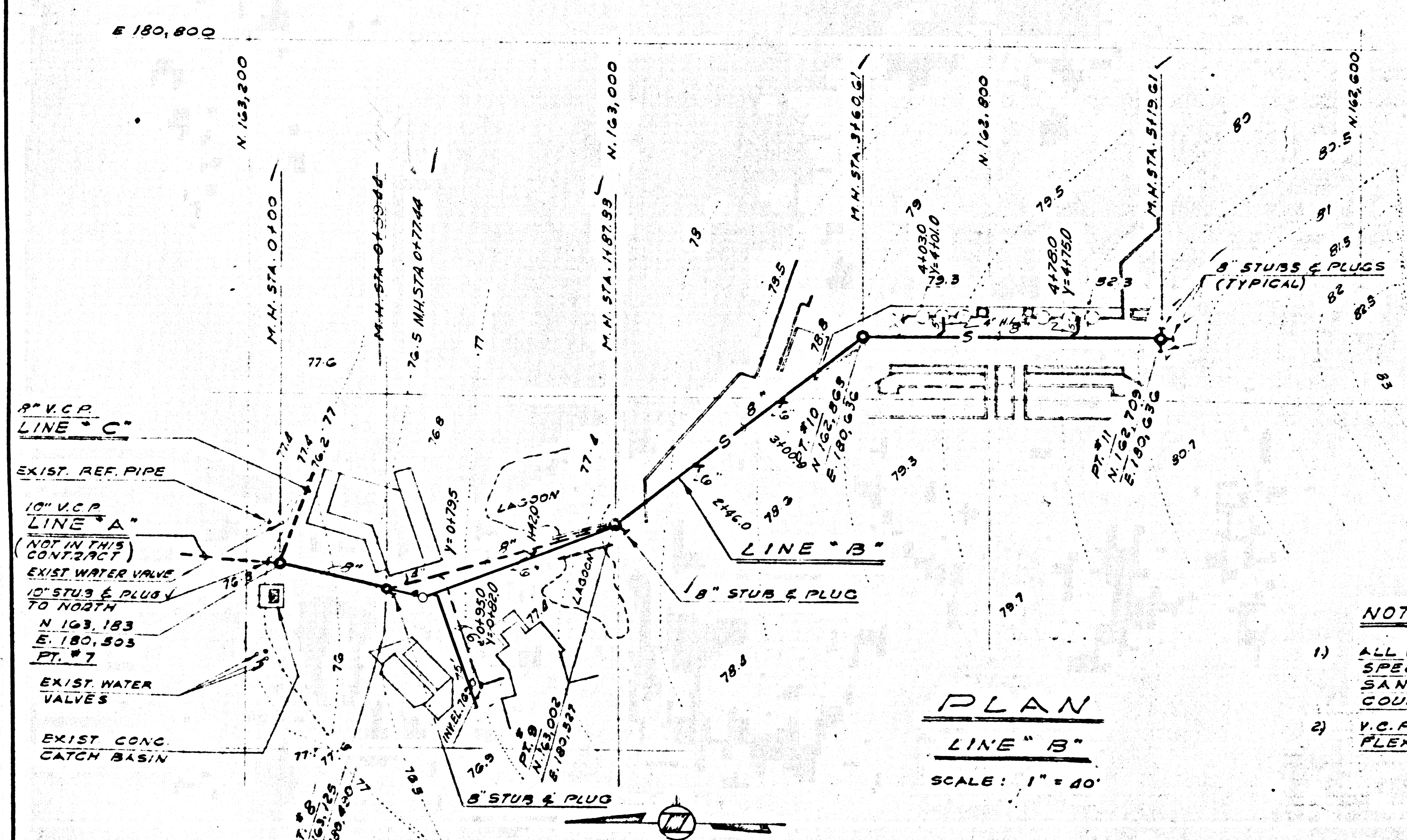
MCA INC
 100 UNIVERSAL CITY PLAZA
 UNIVERSAL CITY, CALIF.

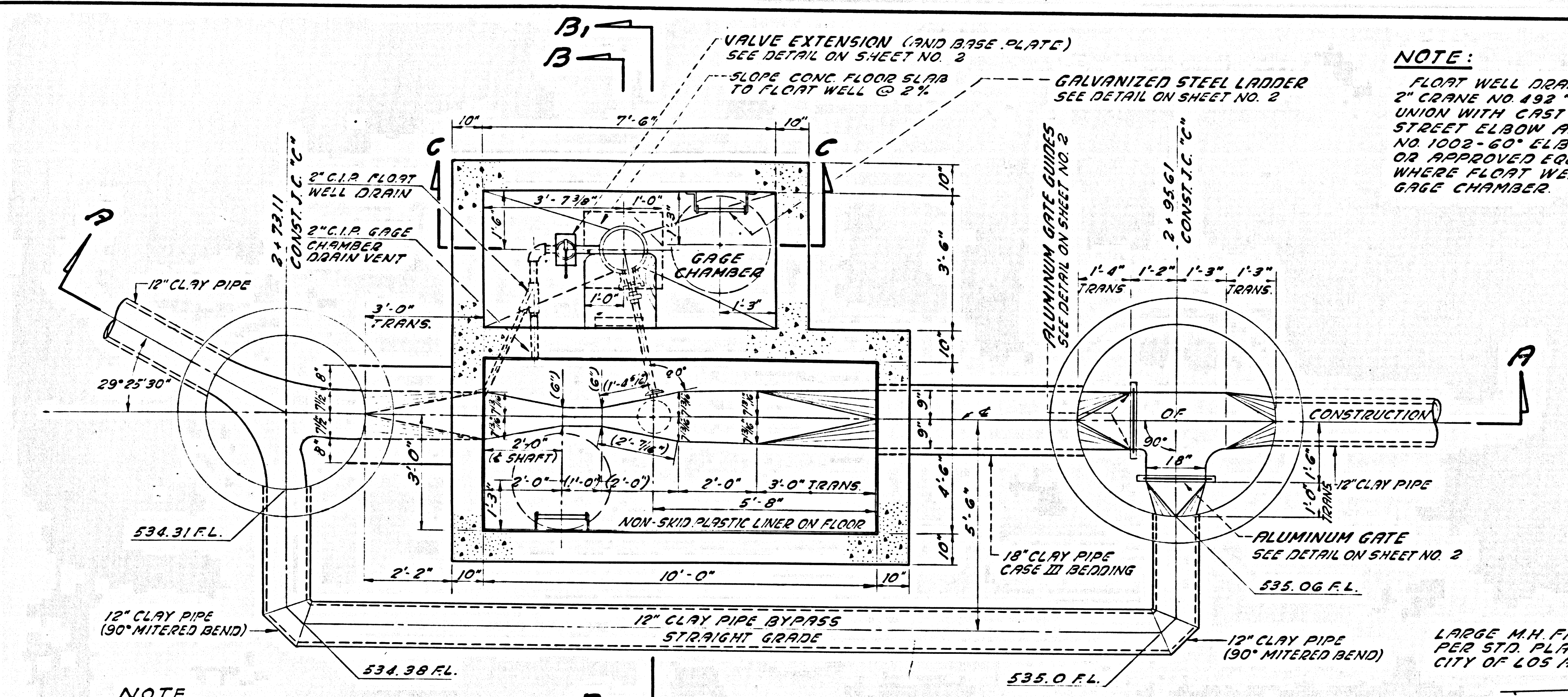
OUTFALL SEWER
 LINE 17"
 PLAN & PROFILE
 STA. 7+40.02 TO STA 17+31.72

DESIGNED BY A. ERVAN	DRAWN BY A. ERVAN	CHECKED BY J. BROWN	DATE APR 20 1965	PROJECT NO. 64314-D	DATE D-C-3
-------------------------	----------------------	------------------------	---------------------	------------------------	---------------



PROFILE
 HORIZ: 1" = 40'
 SCALES: VERT: 1" = 4'





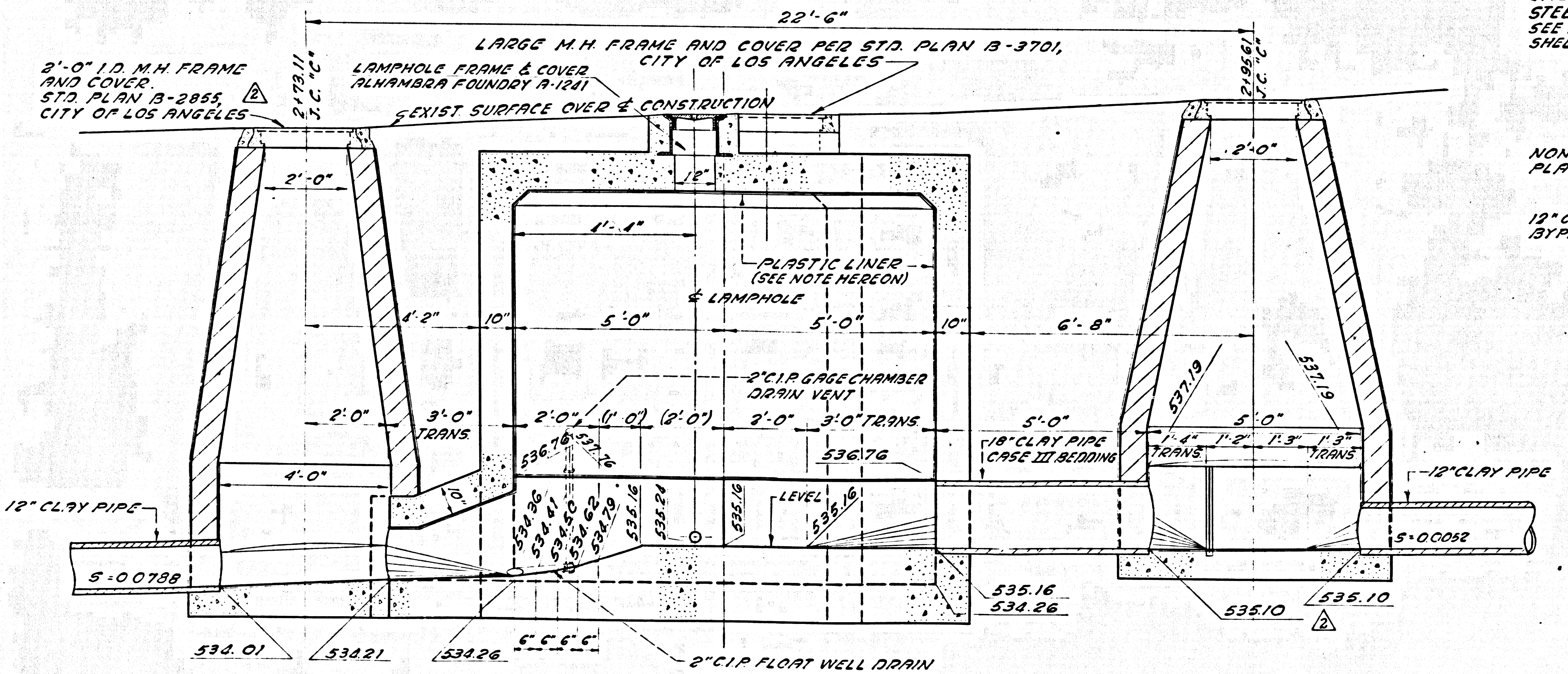
NOTE
ALL DIMENSIONS IN PARENTHESES () SHALL BE HELD TO A TOLERANCE OF $\pm \frac{1}{8}$ OF AN INCH.

SECTIONAL PLAN
SCALE: 1/2" = 1'-0"

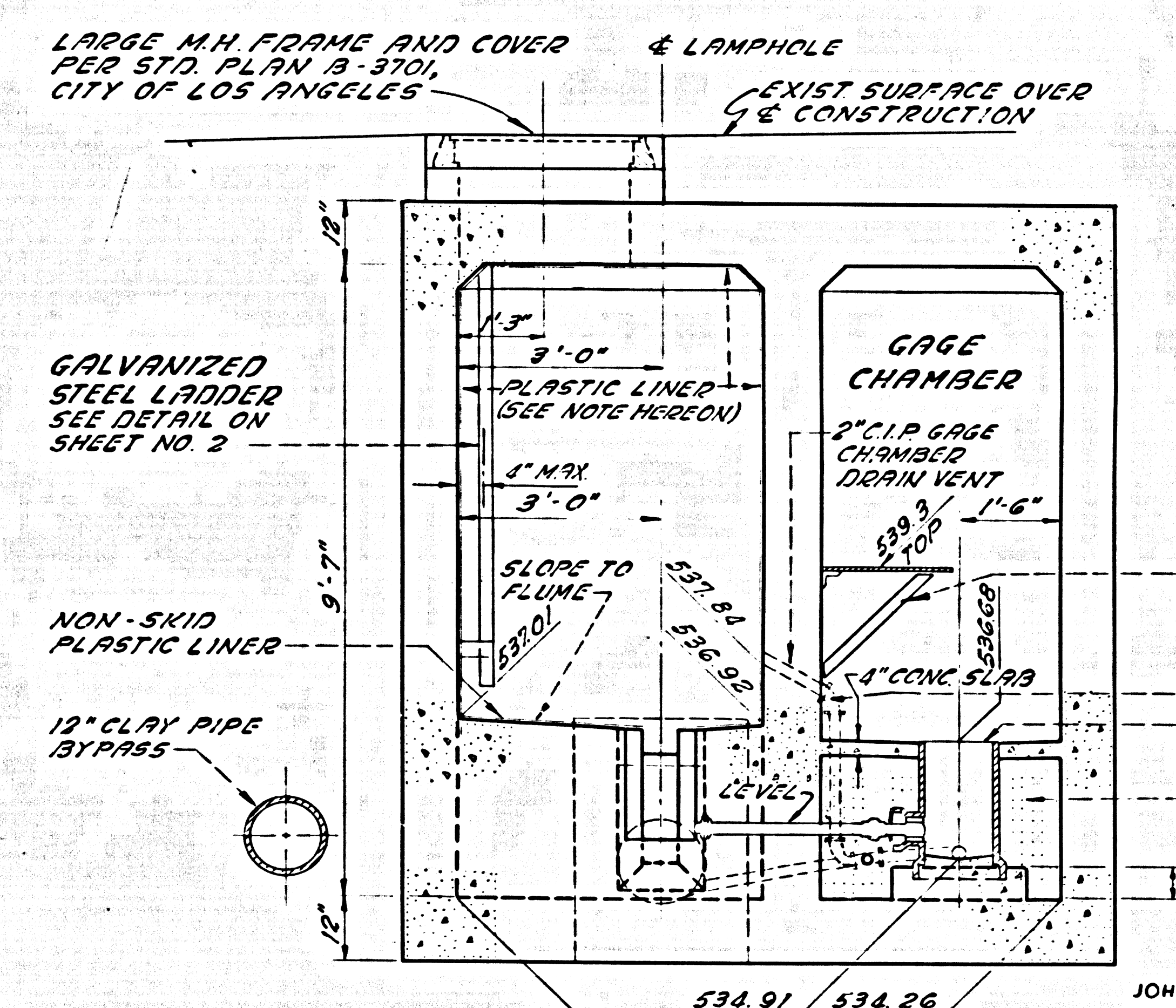
NOTE:
FLOAT WELL DRAIN SHALL BE A 2" CAST IRON PIPE WITH A 2" CRANE NO. 499 "QUICK OPENING" VALVE, A CRANE NO. 1280 1/2 UNION WITH CAST IRON CLOSE NIPPLE, A CRANE NO. 1057 90° STREET ELBOW AND, FOR BENDING, TO MEET FL. A CRANE NO. 1002-60° ELBOW AND A 45° Y BEND OR APPROVED EQUALS JOINT COMPOUND SHALL BE USED WHERE FLOAT WELL DRAIN PASSES THROUGH WALL OF GAGE CHAMBER.

- NOTES**
1. ALL CONCRETE SHALL BE CITY OF LOS ANGELES CLASS "C" MAXIMUM AGGREGATE SIZE 3/4".
 2. WHENEVER STANDARD SPECIFICATIONS NO. 158, CITY OF LOS ANGELES IS MENTIONED, IT SHALL REFER TO STANDARD SPECIFICATIONS 158, DEPARTMENT OF PUBLIC WORKS, CITY OF LOS ANGELES.
 3. BAR SPACING IS CENTER TO CENTER OF BARS.
 4. DIMENSIONS FROM FACE OF CONCRETE TO BARS ARE CLEAR DISTANCES.
 5. BAR CLEARANCES TO PLASTIC LINED SURFACE ARE 2 1/2" CLEAR.
 6. STOP ALL INTERFERING BARS 3" FROM ALL OPENINGS.
 7. THE WALLS AND TOP SLAB MAY BE POURED MONOLITHIC ON CONDITION THAT AFTER THE WALLS HAVE BEEN POURED A DELAY OF NOT MORE THAN TWO HOURS SHALL BE MADE BEFORE POURING OF TOP SLAB IS STARTED.
 8. PLASTIC LINER SHALL CONFORM TO STANDARD SPECIFICATIONS NO. 158, CITY OF LOS ANGELES AND TO CITY OF LOS ANGELES STANDARD PLAN D-17040.
 9. MAIN STRESS CARRYING BARS SHALL BE INTERMEDIATE GRADE AND SHALL COMPLY WITH A.S.T.M. A15-50T. LONGITUDINAL STEEL MAY BE HARD GRADE BARS, A.S.T.M. A15-50T. ALL BARS SHALL BE DEFORMED IN COMPLIANCE WITH A.S.T.M. A305-50T.
 10. THE OUTLET TRANSITION STRUCTURE SHALL BE POURED MONOLITHIC WITH THE INVERT SLAB.

40111



SECTION A-A
SCALE: 1/2" = 1'-0"



SECTION B-B
SCALE: 1/2" = 1'-0"

SANITARY SEWERS
TO BE CONSTRUCTED IN
MCA INC UNIVERSAL CITY

PRIVATE CONTRACT NO. 7354-B

GAGE PLATFORM
SEE DETAIL ON SHEET NO. 2

CRANE NO. 1002-60° ELBOW
FLOAT WELL
SEE DETAIL ON SHEET NO. 2

SAND FILL

COUNTY OF LOS ANGELES, CALIFORNIA
JOHN A. LAMBIE, COUNTY ENGINEER

APPROVED BY: *[Signature]* 8-10-65
ASSISTANT SANITATION ENGINEER

SUBMITTED BY: *[Signature]*
REGIONAL ENGINEER

CHECKED BY: *[Signature]*
REG. CE NO. 10693

NO.	DATE	DESCRIPTION	BY
1/2	8-10-65	ADDED P.C. No. 7354-B	H.W. LONNER
1/2	8-10-65	REVISED ELEVATIONS	H.W. LONNER
1/2	8-10-65	REVISIONS	H.W. LONNER

PLANS PREPARED BY
QUINTON ENGINEERS LTD.
CONSULTING ENGINEERS
LOS ANGELES, CALIFORNIA

BY: *[Signature]*
H.W. LONNER R.C.E. 6422

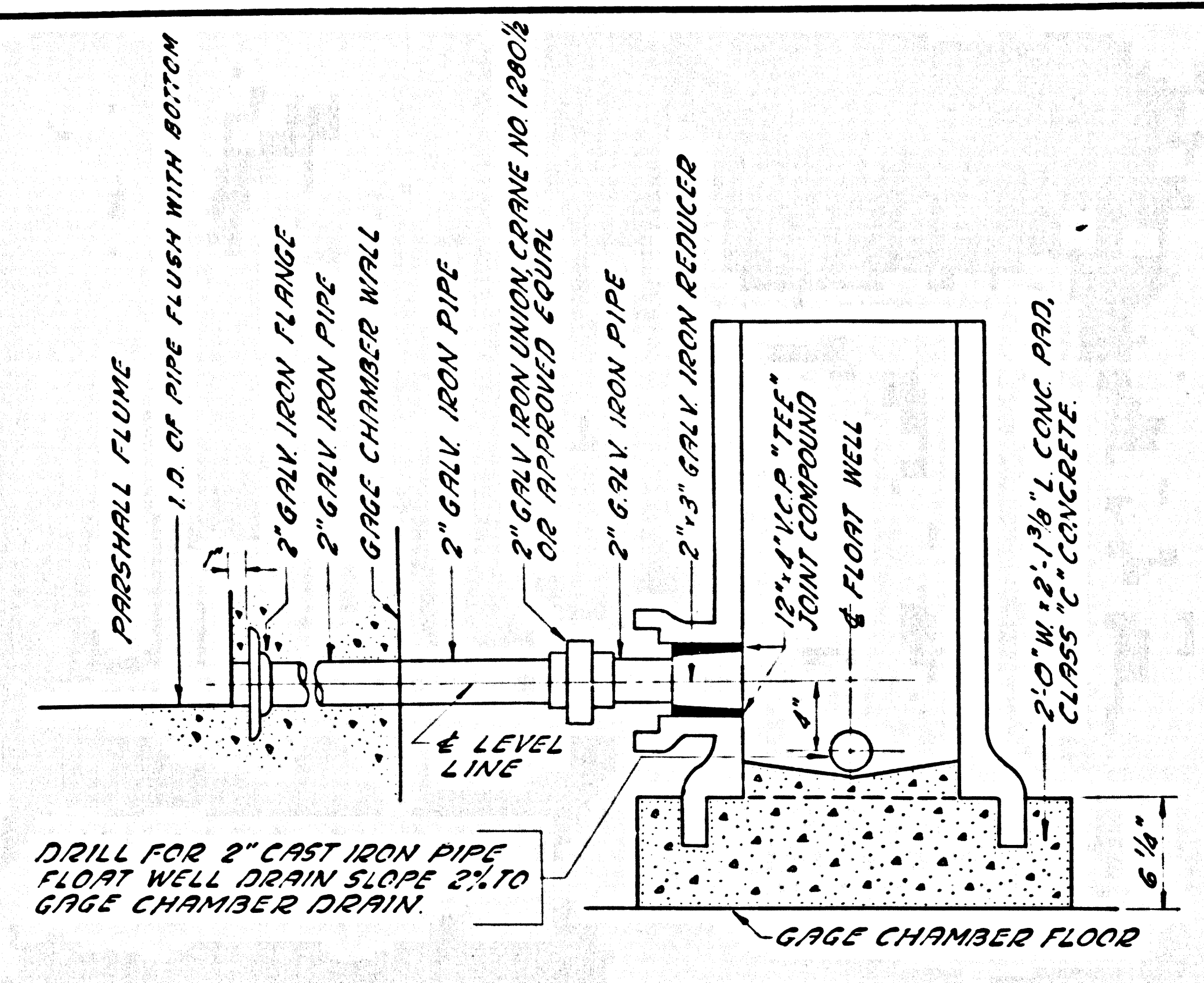
SUBMITTED 8-10-1965
APPROVED 8-10-1965

[Signature]
DIVISION OR DISTRICT ENGINEER
Herschel B. Brown

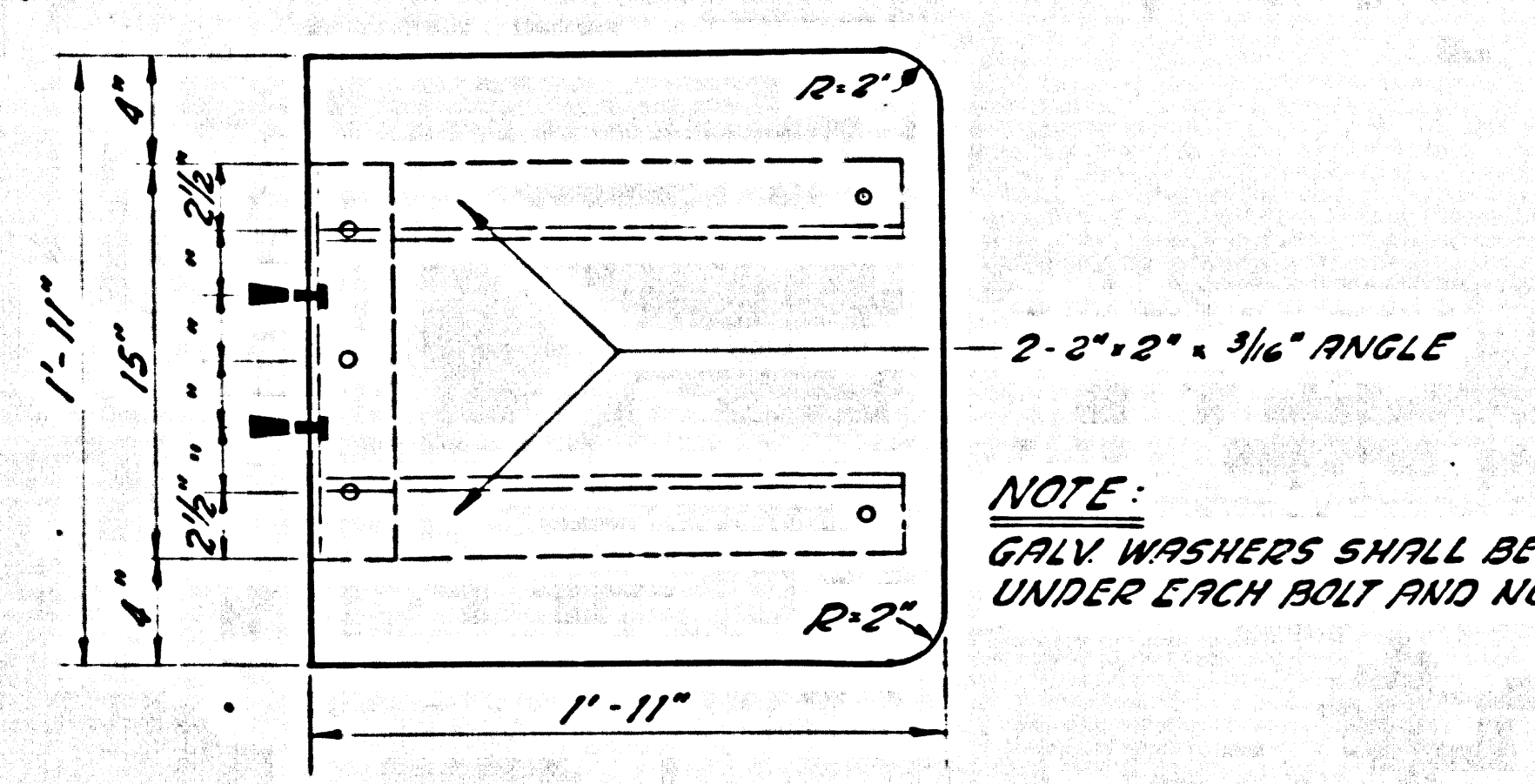
[Signature]
CITY ENGINEER
Lyllal A. Pardee

CITY OF LOS ANGELES
LYALL A. PARDEE CITY ENGINEER
MCA INC.
UNIVERSAL CITY, CALIF.
OUTFALL SEWER
GAGING STRUCTURE
PLAN AND SECTIONS

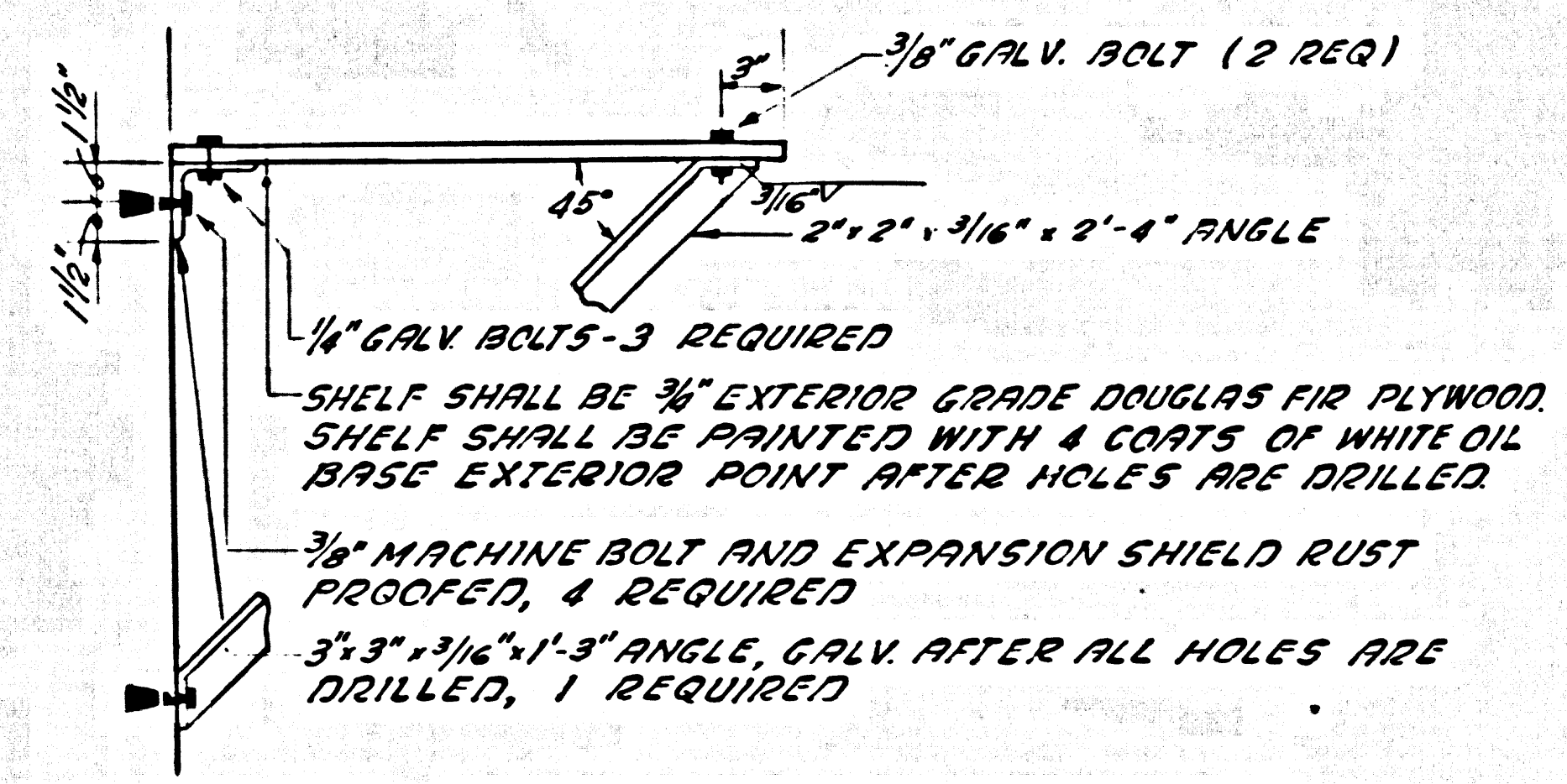
40112



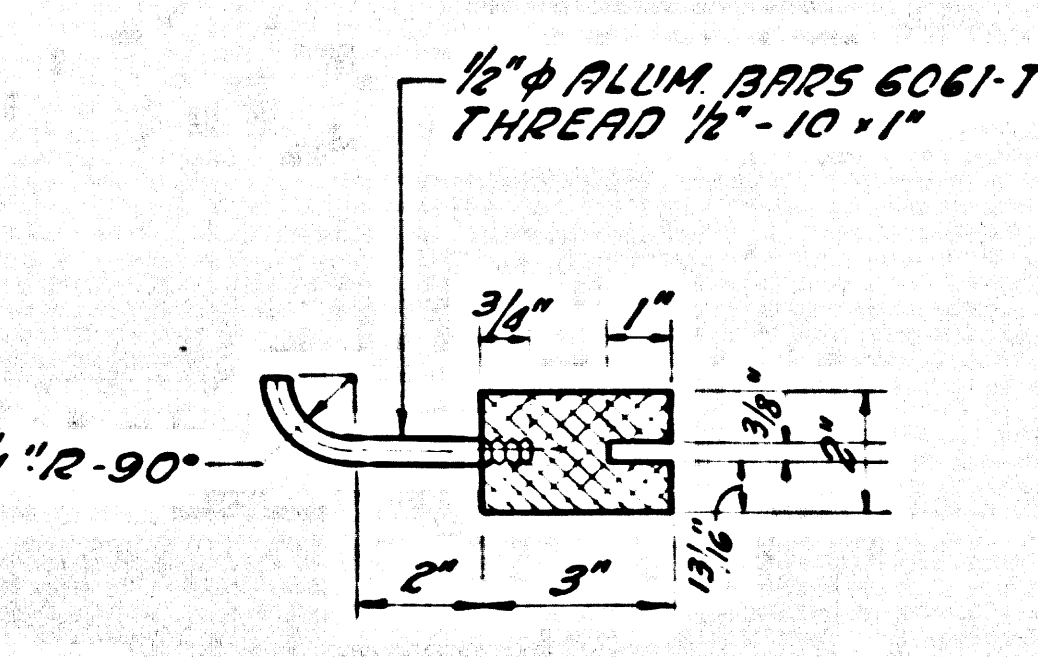
FLOAT WELL DETAIL
SCALE: 1/8" = 1"



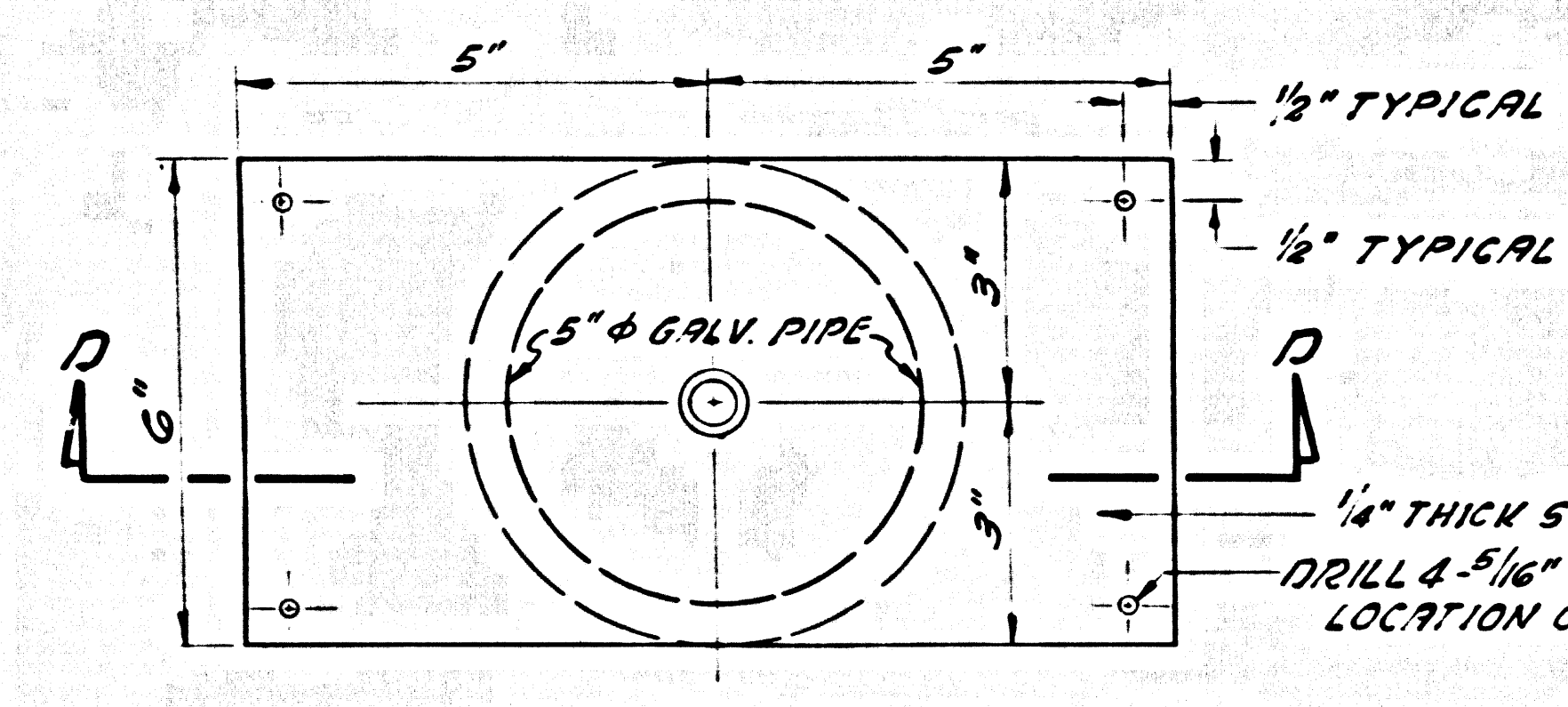
GATE GUIDE & ANCHOR DETAIL
NO SCALE



GAGE PLATFORM DETAIL
SCALE: 1/8" = 1'-0"

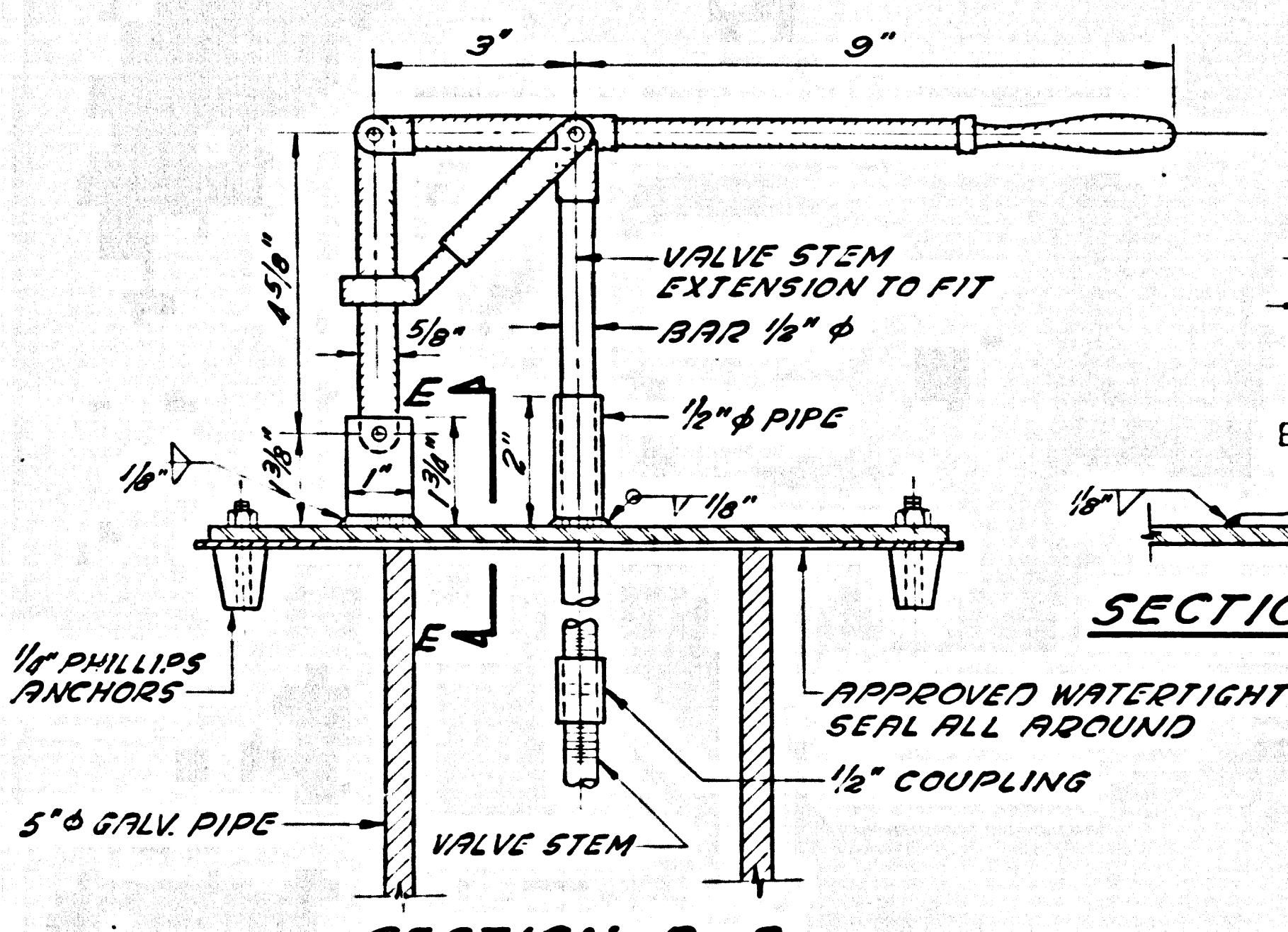


ALUMINUM GATE & GUIDE DETAIL
NO SCALE

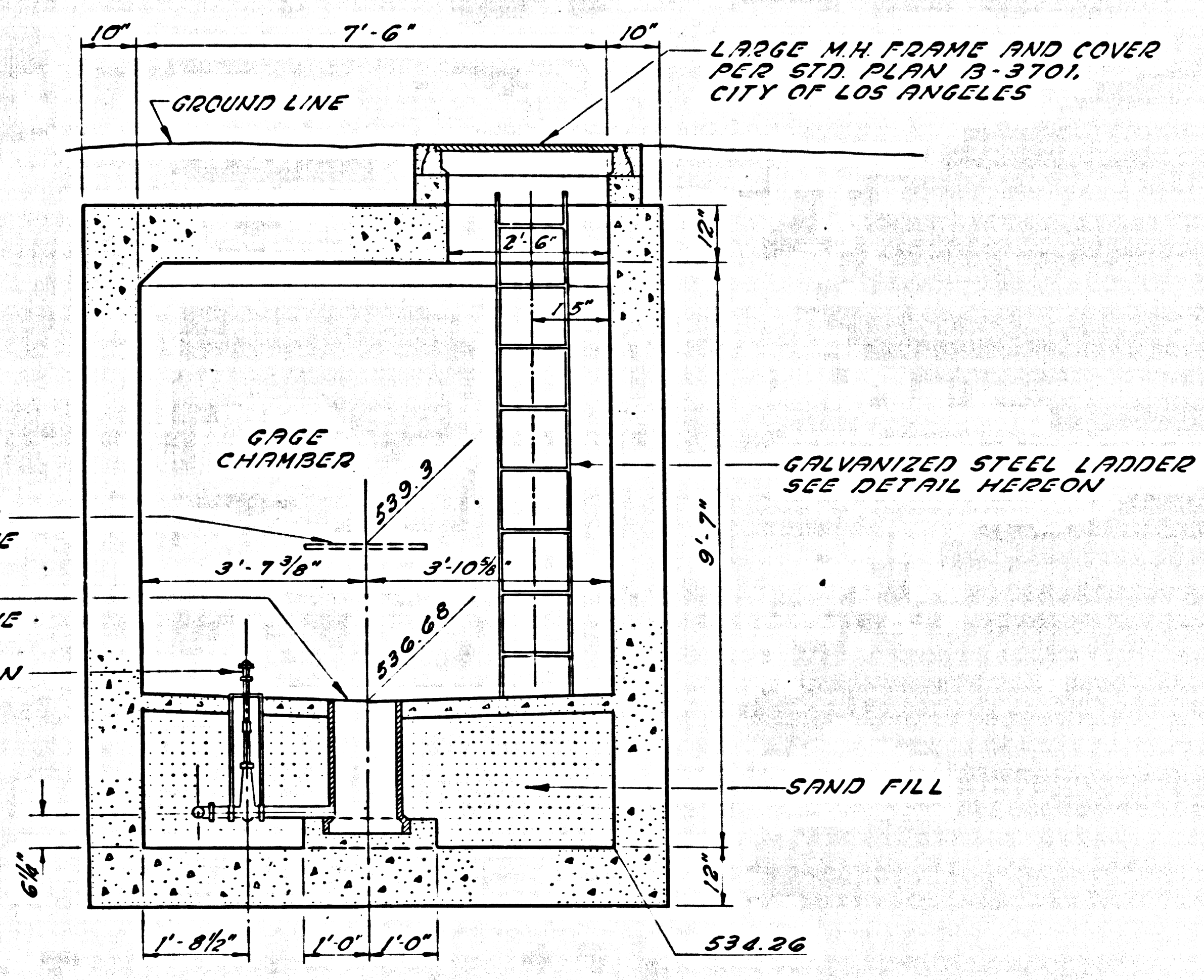


BASE PLATE PLAN

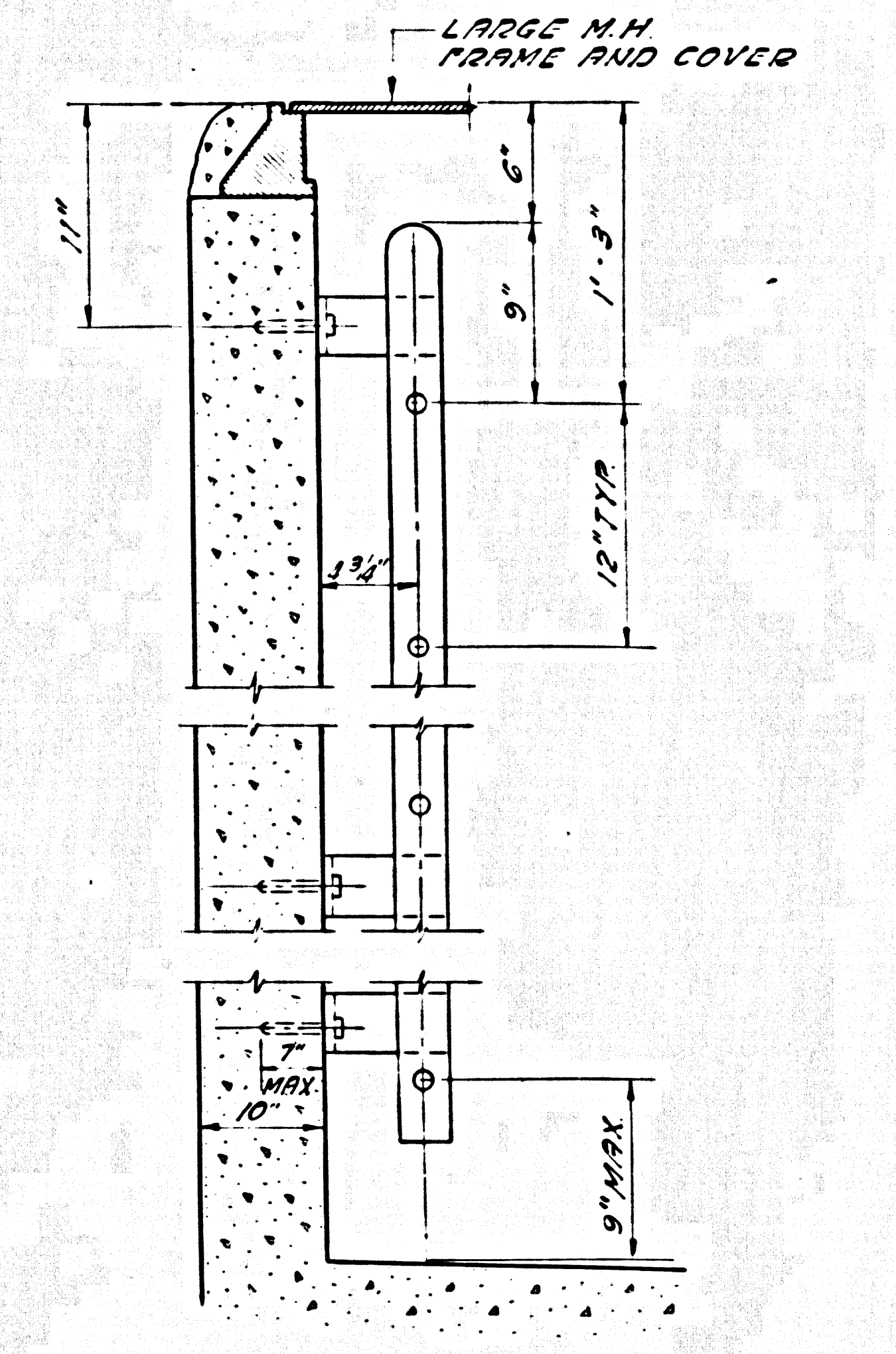
NOTE:
ALL STEEL PARTS TO BE GALVANIZED AFTER FABRICATION.



VALVE EXTENSION DETAIL
SCALE: 3/8" = 1'-0"



SECTION C-C
SCALE: 1/2" = 1'-0"



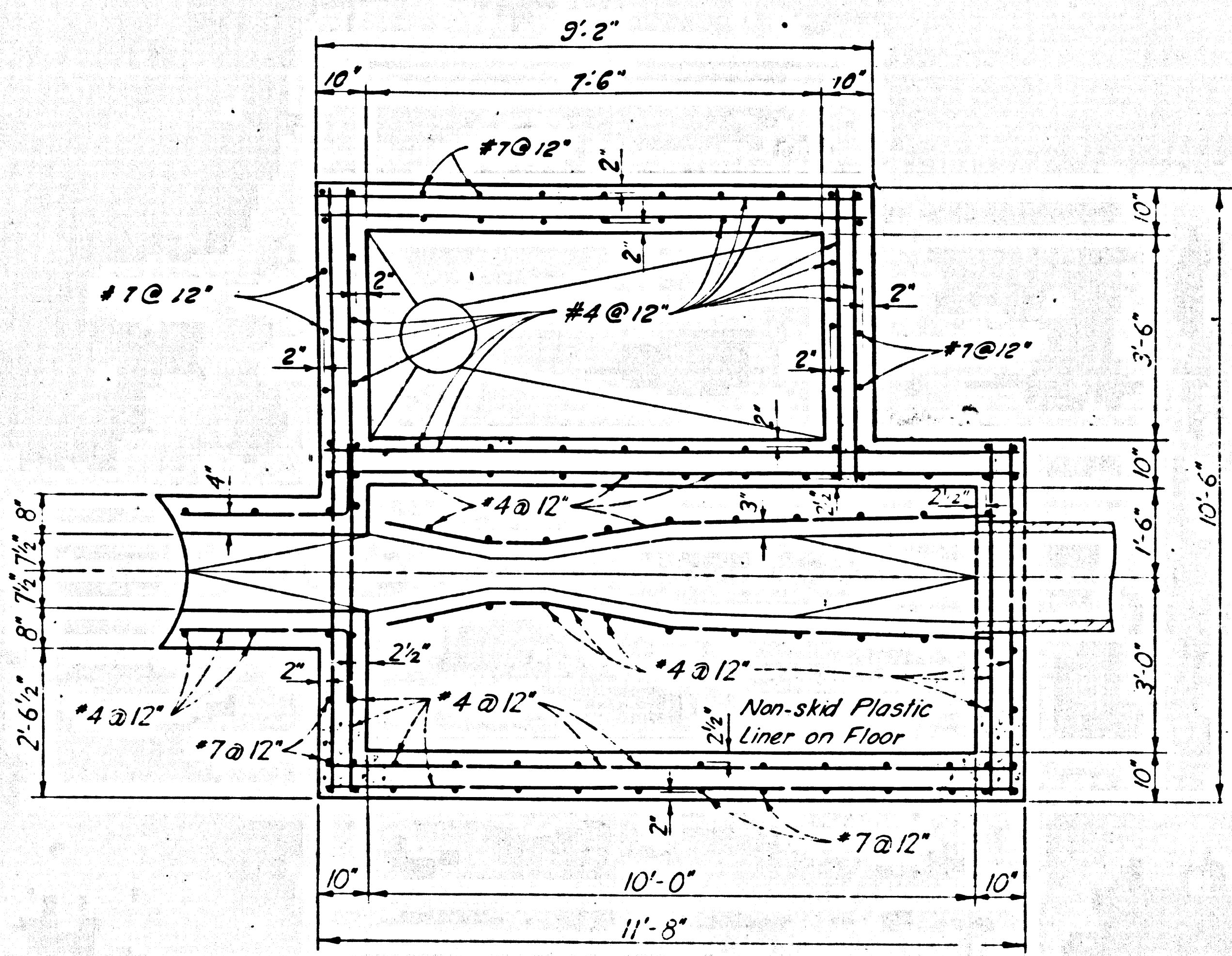
DETAIL OF GALVANIZED STEEL LADDER
NO SCALE

DATE	1956	64314 D	D-C-5
PLANS PREPARED BY QUINTON ENGINEERS LTD. CONSULTING ENGINEERS LOS ANGELES, CALIFORNIA BY: <i>H.W. Lonner</i> H.W. LONNER R.C.E. 6422			

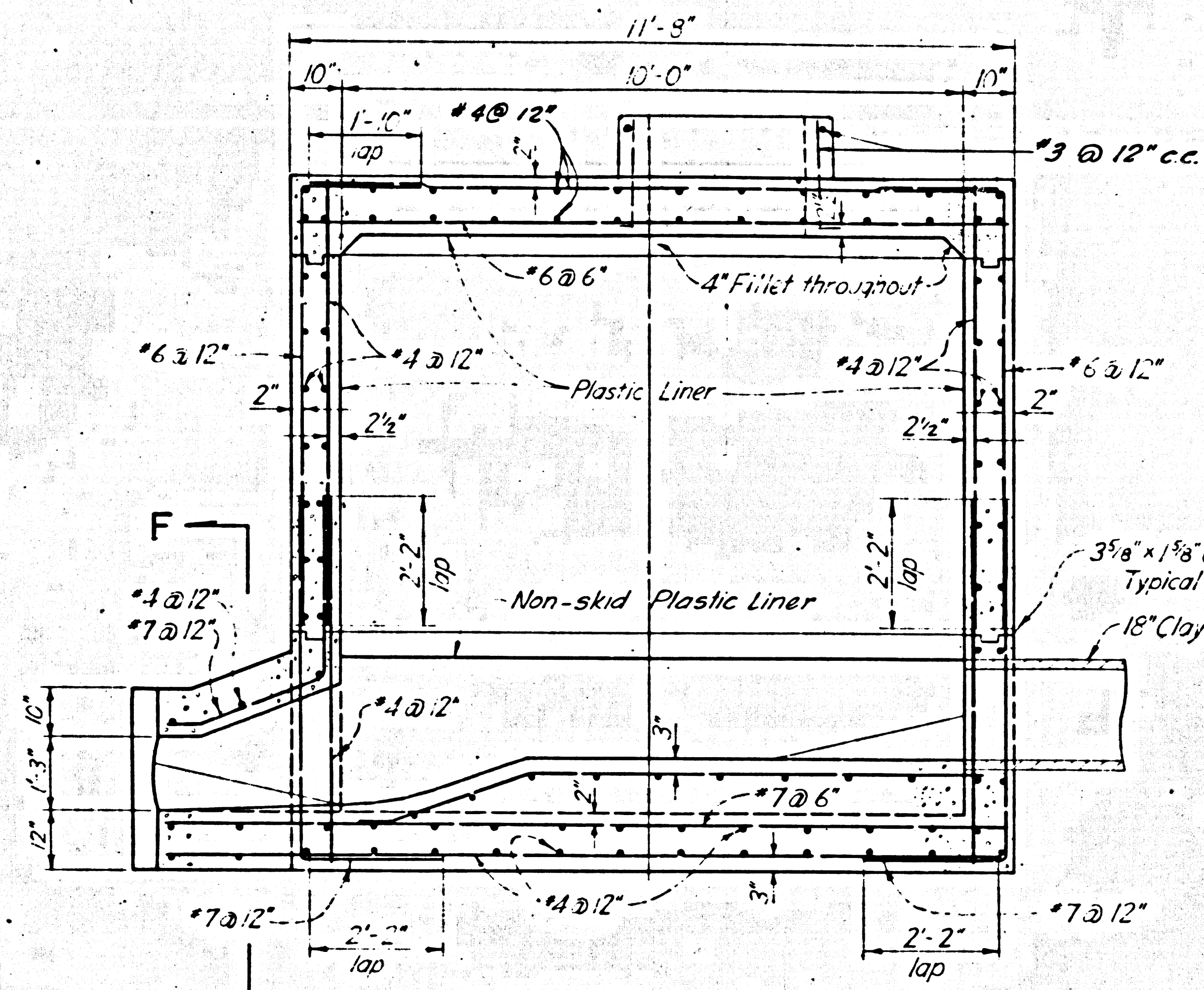
SUBMITTED: 8-10-1965
 APPROVED: 8-10-1965
Herschel B. Brown DIVISION OR DISTRICT ENGINEER
Agall Rader CITY ENGINEER

CITY OF LOS ANGELES
 LYALL A. PARDEE CITY ENGINEER
M C A INC.
 UNIVERSAL CITY, CALIF.
 OUTFALL SEWER
 GAGING STRUCTURE
 DETAILS

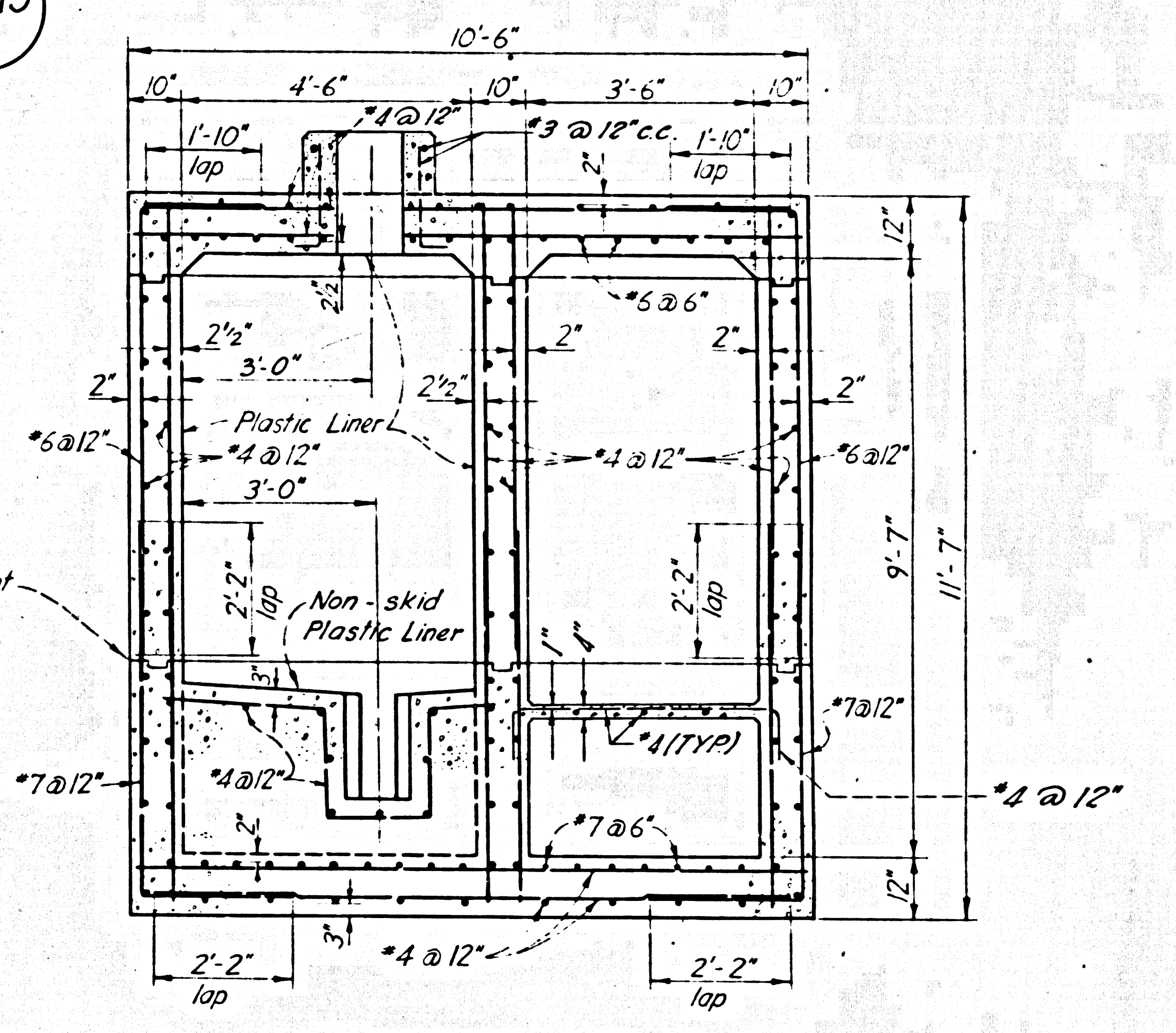
40113



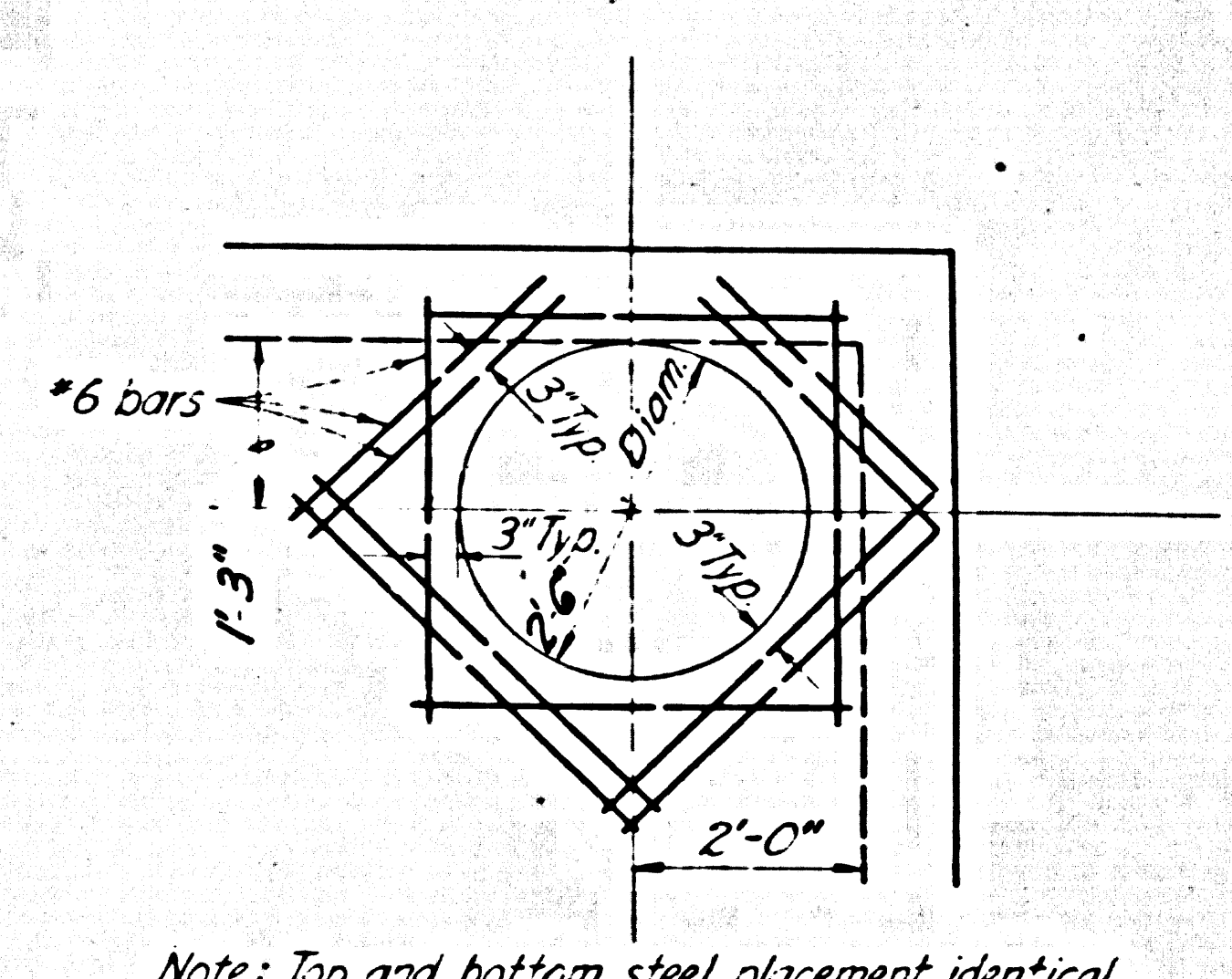
SECTIONAL PLAN
(See Sheet No. 1)
SCALE: 1/2"=1'-0"



SECTION A-A
(See Sheet No. 1)
SCALE: 1/2"=1'-0"

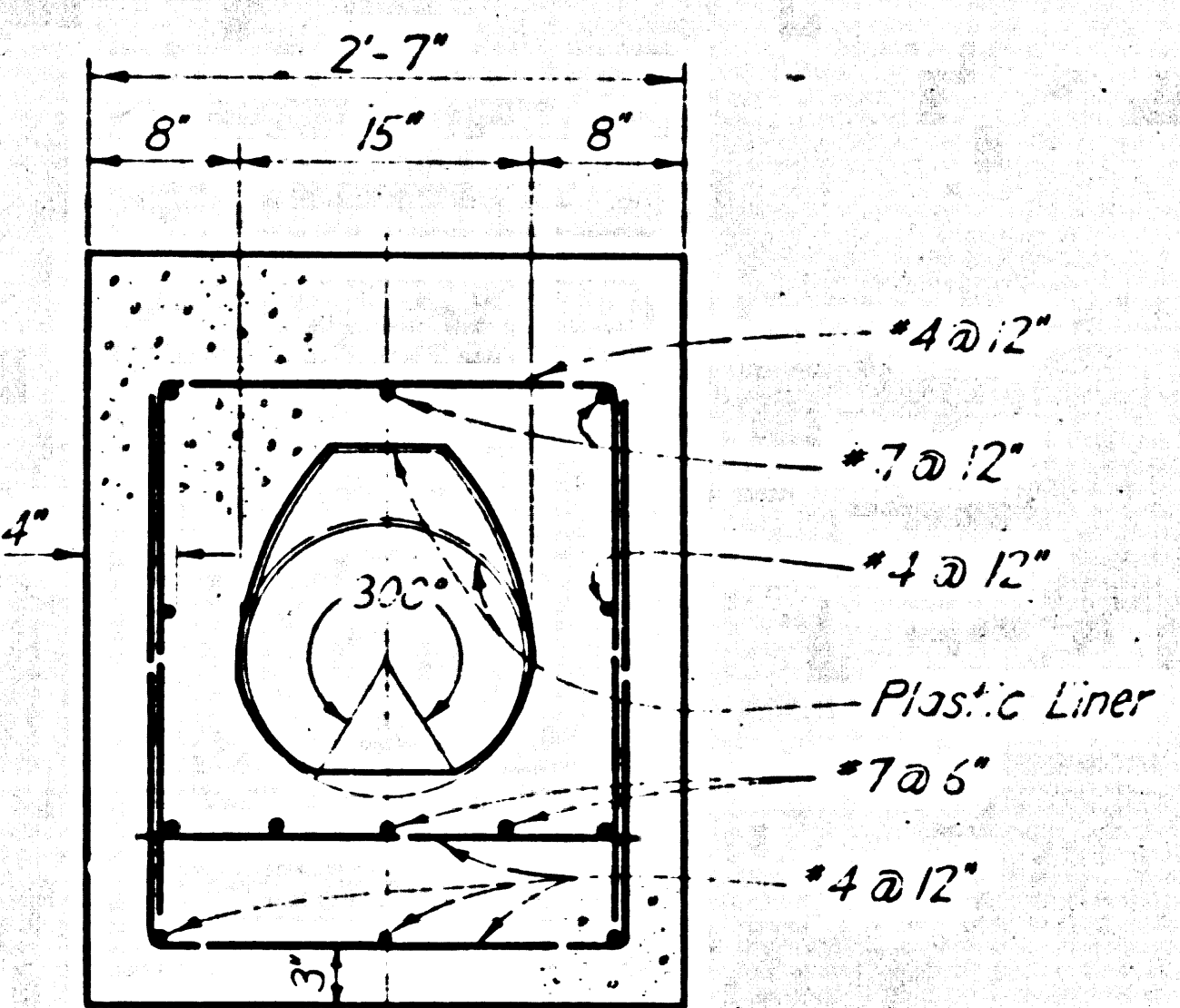


SECTION B-B
(See Sheet No. 1)
SCALE: 1/2"=1'-0"

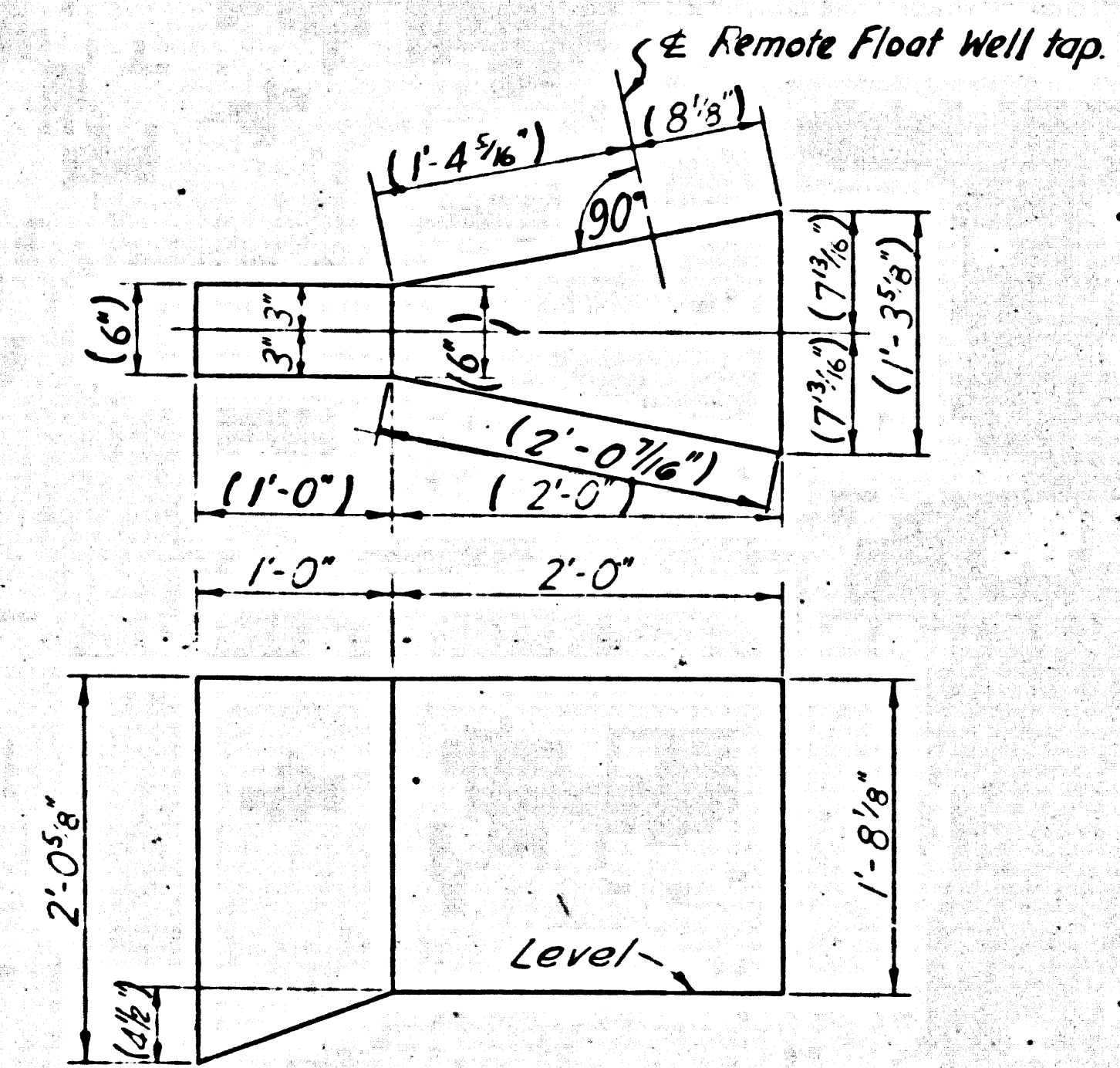


MANHOLE OPENING DETAIL
SCALE: 1/2"=1'-0"

Note: Top and bottom steel placement identical



SECTION F-F
SCALE: 1"=1'-0"



Notes: 1. All sides of Flume to be plumb, free from bulges & depressions & perpendicular to the bottom.
2. Bottom to be free from bulges & depressions.
All dimensions shown are to the inside of the Flume.
All dimensions in parenthesis () shall be held to a tolerance of ± 1/2 of an inch.

DETAIL FLUME DIMENSIONS
SCALE: 1"=1'-0"

NO.	BY	DATE	REVISIONS
1	MM	8-10-1965	ADDED TO PC NO. 7354-B & ADDED DIMENSIONS TO DET. FLUME DIMENSIONS

PLANS PREPARED BY
QUINTON ENGINEERS LTD.
CONSULTING ENGINEERS
LOS ANGELES, CALIFORNIA

SUBMITTED 8-10-1965
APPROVED 8-10-1965
Ely Stradley
DIVISION OF DISTRICT ENGINEER
Herchel B. Brown
DEPUTY ENGINEER (DESIGN)

APPROVED 8-10-1965
L. A. Pardee
CITY ENGINEER

CITY OF LOS ANGELES
LYALL A. PARDEE CITY ENGINEER
MCA INC.
UNIVERSAL CITY, CALIF.

OUTFALL SEWER
GAGING STRUCTURE
STRUCTURAL DETAILS

SHEET NO. 3 OF 3 SHEETS