

B.M. 56.1636 ELEV. 550.794  
 Los Angeles County Road Dept. B.M. 56  
 2.2' Ely. of Curb Rd. S. Ely. Co. Fuller Rd.  
 6 Section St. 2.0' Ely. & 2.65' Ely. & Intersect.  
 Otterbein QUAD. 1955

DOUBLE SCALE  
 LA PUENTE BLDG. DIST. NO. 2

PROFILE ALIGNMENT AND GRADE OF P.C. 7359  
 SANITARY SEWERS PAGE 1

TRACT NO. 23442

PRIVATE CONTRACT NO. 7359

W.S. 38  
 3 SHEETS, 6 PAGES  
 SCALE: VERT. 1" = 4'  
 HORIZ. 1" = 40'  
 MARCH, 1965

PREPARED IN THE OFFICES OF  
 CONSOLIDATED ENGINEERING COMPANY  
 101 S. ROBERTSON BLVD., LOS ANGELES, CALIF.  
 BY: Enrique Acosta  
 REG. C. E. NO. 10915

37244

FOR LEGEND SEE PLAN NO. S-1  
 NOTE:  
 GRADES TO WHICH THIS IMPROVEMENT IS TO BE CONSTRUCTED ARE SHOWN ON PLANS AND PROFILE. GRADE POINTS FOR TOP OF CURBS, CENTER LINE OF STREETS, OR CENTER LINE OF ALLEYS ARE SHOWN BY CIRCLES ON PROFILE. AT ALL POINTS BETWEEN DESIGNATED ELEVATIONS ARE IN FEET ABOVE U.S.C. & G.S. MEAN SEA LEVEL UNLESS OTHERWISE NOTED.  
 THIS DRAWING AND THE DATA HEREON ARE HEREBY MADE A PART OF THE SPECIFICATIONS.  
 BEFORE WORK CAN BE STARTED, THE CONTRACTOR MUST OBTAIN A PERMIT TO EXCAVATE IN COUNTY STREETS FROM THE L.A. COUNTY ROAD DEPT., DISTRICT OFFICE NO. 1, AND PAY A FEE TO THE COUNTY ENGINEER, ROOM 300, COUNTY ENGINEERING BUILDING, WEST SECOND STREET, LOS ANGELES, CALIF. THE CONTRACTOR SHALL BE RESPONSIBLE FOR OBTAINING ALL NECESSARY PERMITS AND RECORD PLANS.  
 APPROVAL OF THIS PLAN BY THE COUNTY OF LOS ANGELES DOES NOT CONSTITUTE A REPRESENTATION AS TO THE ACCURACY OF THE PROJECT. THE NOTE APPLIES TO ALL PAGES.  
 IF WORK IS TO BE DONE IN A STATE HIGHWAY, A PERMIT MUST BE OBTAINED FROM THE STATE OF CALIFORNIA, DIVISION OF HIGHWAYS, 126 SOUTH SPRING STREET, LOS ANGELES, CALIFORNIA.

COUNTY OF LOS ANGELES, CALIFORNIA  
 JOHN A. LAMBE, COUNTY ENGINEER  
 J. D. PARKHURST, CHIEF ENGINEER  
 CO. SAN. DIST. NO. 21

APPROVED BY: [Signature]  
 SANITATION ENGINEER

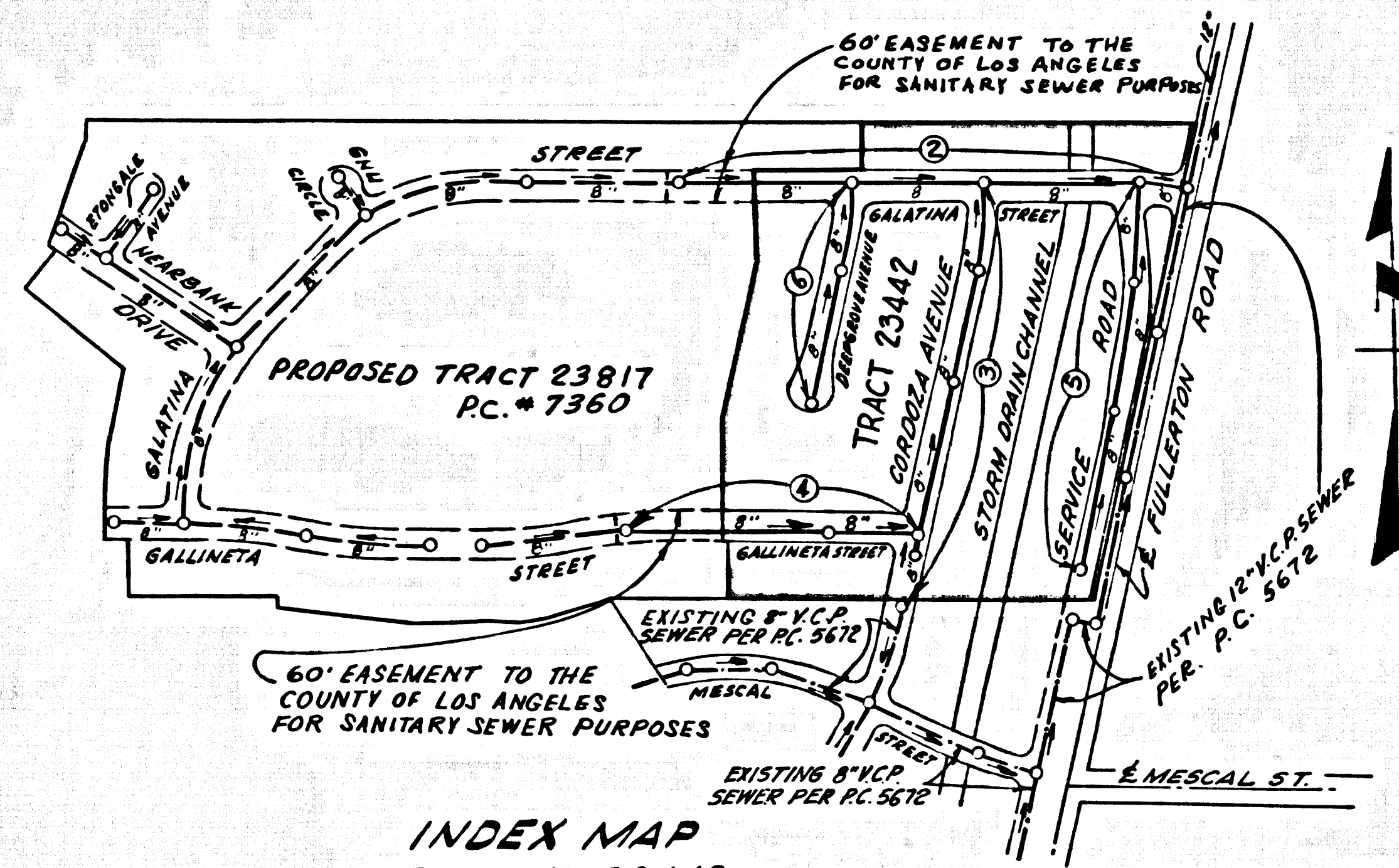
APPROVED BY: [Signature]  
 OFFICE ENGINEER

SUBMITTED BY: [Signature]  
 FOR SANITARY REGIONAL ENGINEER

CHECKED BY: [Signature] 8-1-65  
 REG. C.E. NO. 12823

J.N. 0365.71

Any connection to the sewer system of County Sanitation District, provided directly or indirectly by the sewers shown on these plans, shall be considered a temporary connection until all area covered is annexed to said district, at which time the connection shall become permanent. If for any reason the annexation to the district of any area covered hereunder is not completed, the property not in the district will be required to disconnect unless a contract is entered into with the district providing for the disposal of sewage from the area.

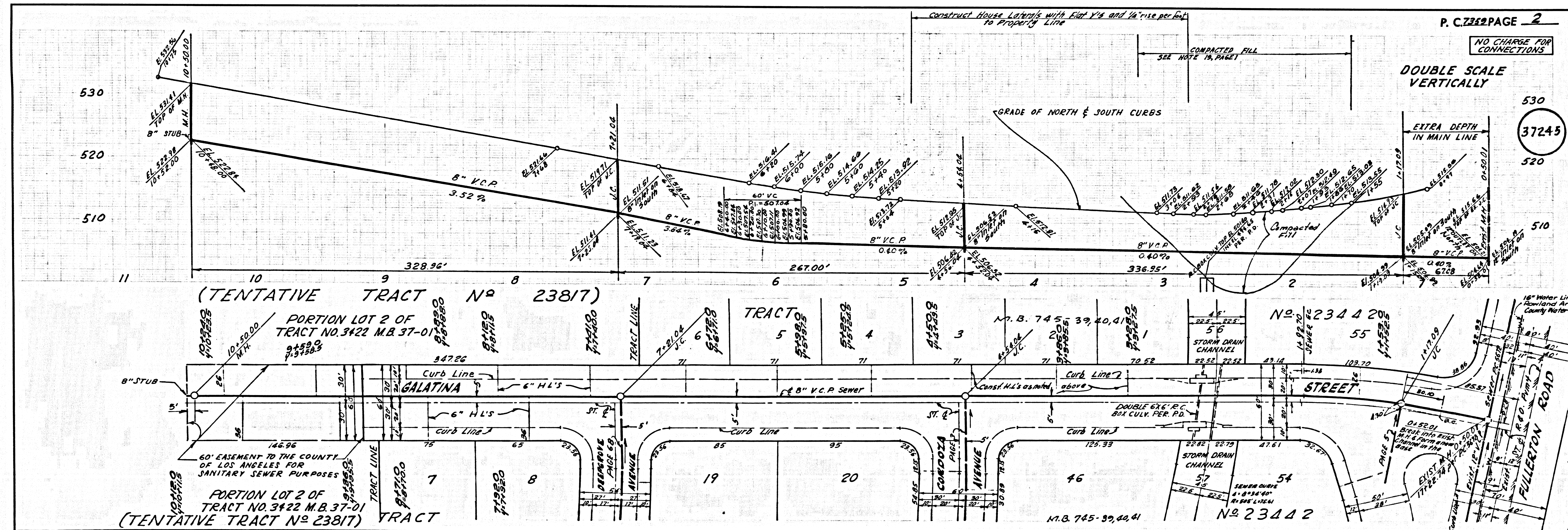


INDEX MAP  
 TRACT NO. 23442  
 SCALE: 1" = 300'  
 P.C. 7359

REVISION:  
 Page 6 - M.H. moved from Sta 4+87.15  
 to Sta 4+87.10  
 DATE: 10-23-65  
 BY: [Signature]  
 Office of County Engineer

COLLECT CHARGES  
 AS INDICATED

NO CONNECTIONS FOR THE DISPOSAL OF INDUSTRIAL WASTES SHALL BE MADE TO SEWERS SHOWN ON THESE DRAWINGS WITHOUT WRITTEN PERMISSION FROM THE CHIEF ENGINEER AND GENERAL MANAGER OF THE COUNTY SANITATION DISTRICT



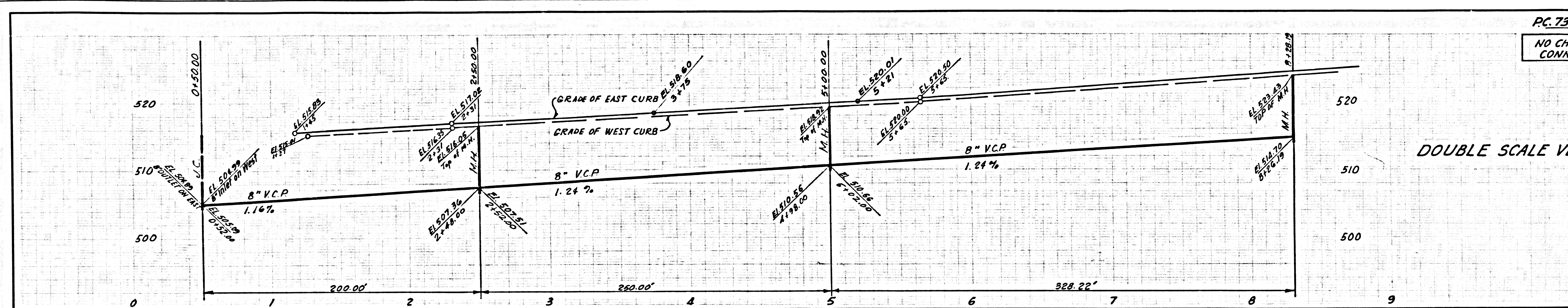
P. C. 7359 PAGE 2

NO CHARGE FOR CONNECTIONS

DOUBLE SCALE VERTICALLY

37245

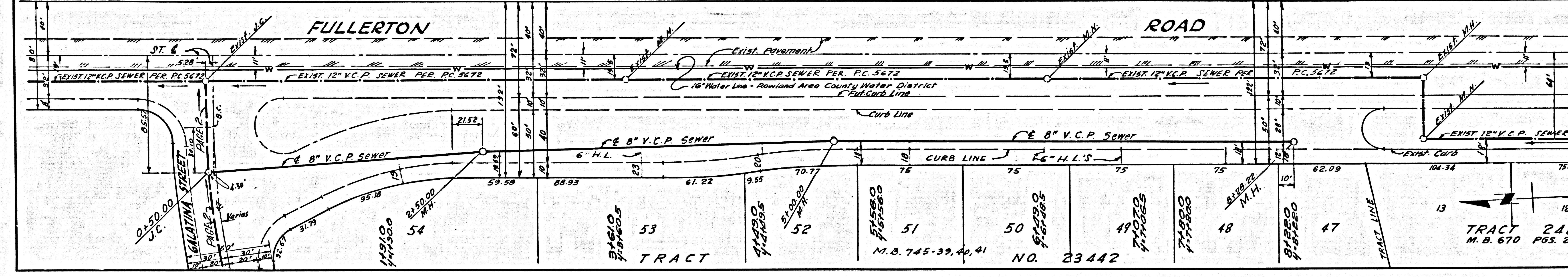




PC. 7359 PAGE 5  
 NO CHARGE FOR CONNECTIONS

DOUBLE SCALE VERTICALLY

37248



RECT 28

SECT 28

PC. 7359 PAGE 6  
 DOUBLE SCALE VERTICALLY  
 NO CHARGE FOR CONNECTIONS

37249

