

B.M. 5.Y. 3972 ELEV. 44.037  
 U.S.C. and B.S. of Cal. Map Flank  
 with ground 5' 95" W. of Wilmington  
 Ave. 7' 10" N. of Del Amo Blvd. to  
 South Wilmington Ave. marked  
 "N. 700-1960"  
 GARDENA QUAD. 19 60

**NOTICE TO CONTRACTOR**  
 The existence and location of any underground utility pipes  
 or structures shown on these plans are obtained by a  
 search of the available records.  
 The contractor is required to take due precautionary  
 measures to protect the utility lines not at record or  
 not shown on these plans.

**LENNOX BLDG. DIST. NO. 7**

PROFILE ALIGNMENT AND GRADE OF P.C. 7367  
 SANITARY SEWERS PAGE 1

TO BE CONSTRUCTED IN  
**SIPHON N/O DEL AMO BLVD.**

**PRIVATE CONTRACT NO. 7367**

W.S. 20  
 2 SHEETS, 3 PAGES  
 SCALE: VERT. As Shown HORIZ. MAY, 1965

PREPARED IN THE OFFICES OF  
**VOORHEES-TRENKLE-NELSON**  
 13754 BOCCA BOULEVARD  
 WESTMINSTER, CALIF.  
 BY **James E. Whitelaw**  
 REG. C.E. NO. 14315

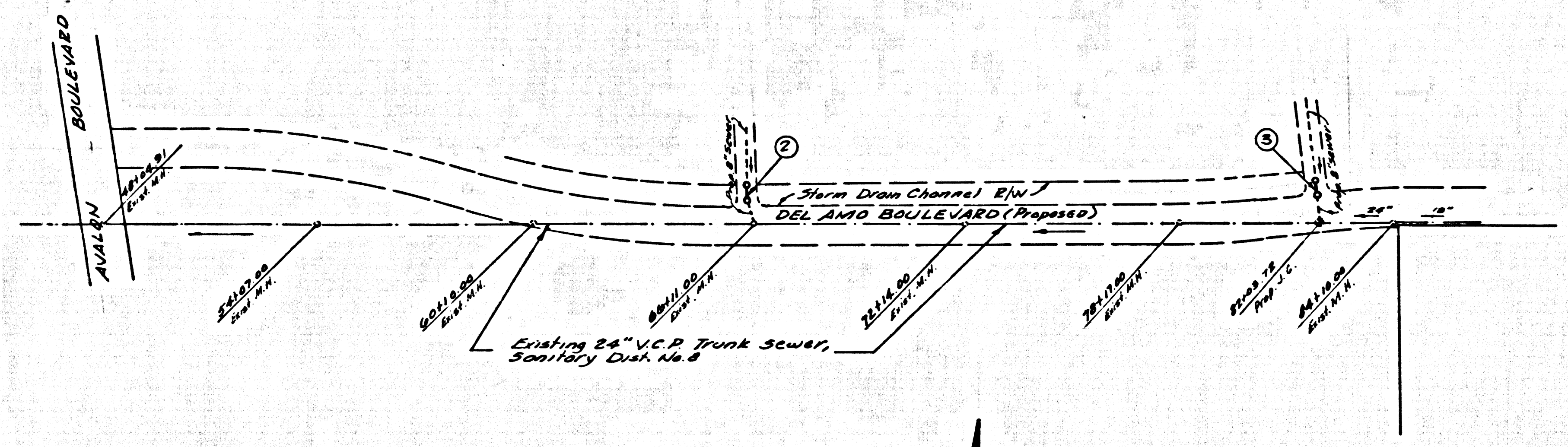
FOR LEGEND SEE PLAN NO.

- NOTES:
- PROVIDE STAKES ON THE PROPERTY LINE OR PROPERTY LINES PRODUCED AT RIGHT ANGLES TO THE SEWER LINE AT THE CENTER LINE OF EACH MANHOLE.
  - NO REPRESENTATIVE OF THE COUNTY ENGINEER WILL SURVEY OR LAY OUT ANY PORTION OF THE WORK.
  - THE PRIVATE ENGINEER SHALL FURNISH THE COUNTY ENGINEER WITH GRADE SHEETS AND STATIONING FOR ALL HOUSE LATERALS AND Y-BRANCHES AND SHALL PROVIDE STAKES FOR THESE AT THEIR PROPER LOCATIONS WITH STATIONING PLAINLY MARKED. ALL HOUSE LATERALS SHALL BE CONSTRUCTED IN A STRAIGHT ALIGNMENT AT RIGHT ANGLES FROM THE MAIN LINE SEWER EXCEPT AS SHOWN ON THE PLANS. HOUSE LATERALS FROM CHIMNEYS SHALL NOT HAVE AN ANGLE OF LESS THAN 45° WITH THE MAIN LINE SEWER. ANY CHANGE IN ALIGNMENT SHALL BE REQUESTED IN WRITING BY THE PRIVATE ENGINEER.
  - THE PRIVATE ENGINEER SHALL FURNISH THE HOUSE LATERAL DEPTH AT THE PROPERTY LINE BELOW THE TOP OF CURB ELEVATION FOR EACH HOUSE LATERAL ON THE GRADE SHEET.
  - NO REVISIONS SHALL BE MADE IN THESE PLANS WITHOUT THE APPROVAL OF THE COUNTY ENGINEER.
  - THE CONTRACTOR SHALL NOTIFY THE CONSTRUCTION DIVISION BY TELEPHONE, MADISON 9-4747, EXT. 8158, AT LEAST TWENTY-FOUR HOURS BEFORE STARTING ANY WORK UNDER THIS CONTRACT.
  - MANHOLES SHALL BE BRICK SEWER STRUCTURES PER S-2 - PRECAST CONCRETE MANHOLES PER S-6" OR S-8" MAY BE USED AS AN ALTERNATE IN LOCATIONS APPROVED BY THE COUNTY ENGINEER.
  - USE STANDARD MANHOLE FRAMES AND COVERS, S-18 EXCEPT AS NOTED.
  - MANHOLE TOPS IN UNIMPROVED RIGHTS-OF-WAY TO BE SIX INCHES ABOVE FINISHED GRADE.
  - USE EXTRA STRENGTH PIPE. ALL PIPE IS STANDARD DEPTH EXCEPT AS NOTED.
  - USE MECHANICAL COMPRESSION JOINTS FOR ALL V.C.P. JOINTS PER SPECS., SECS. 86, 48 F 89
  - WHERE EVER GROUND WATER IS ENCOUNTERED DURING THE CONSTRUCTION OF THE SEWERS, THE V.C.P. JOINTS SHALL BE OF JOINT-COMPOUND PER SPECS., SECS. 23 & 48, OR MECHANICAL COMPRESSION JOINTS PER SPECS., SEC. 86.
  - IF A POWER POLE IS WITHIN THREE FEET OF THE SEWER, THE SEWER SHALL BE ENCASED, PER S-2" CASE III, TWO FEET ON EITHER SIDE FROM THE POINT OF INTERFERENCE.
  - IF DURING THE COURSE OF CONSTRUCTION IT IS DETERMINED THAT THERE IS LESS THAN FOUR FEET OF COVER OVER THE TOP OF A MAIN LINE OR HOUSE LATERAL V.C.P. SEWER WHICH IS NOT INDICATED ON THE PLANS, THE PIPE SHALL BE ENCASED PER S-2" CASE III, UNLESS OTHERWISE APPROVED BY THE COUNTY ENGINEER.
  - HOUSE LATERALS TO BE CONSTRUCTED WITH INVERTS AT PROPERTY LINE... FEET BELOW CURB GRADE EXCEPT AS NOTED.
  - RESURFACE ALL TRENCHES WITHIN PAVED AREAS TO MEET L.A. COUNTY ROAD DEPT. OR CALIFORNIA STATE HIGHWAY REQUIREMENTS IN ACCORDANCE WITH PERMITS.
  - FOR ALLOWABLE LEAKAGE TEST USE FORMULA NO. 2... SPECS., SEC. 84.
  - ALL STATE AND LOCAL TRAFFIC SAFETY ORDERS WILL BE ENFORCED.

GRADES TO WHICH THIS IMPROVEMENT IS TO BE CONSTRUCTED ARE SHOWN ON PLANS AND PROFILES. GRADE POINTS FOR TOP OF CURBS, CENTER LINE OF STREETS, OR CENTER LINE OF ALLEYS ARE SHOWN BY CIRCLES ON PROFILES. AT ALL POINTS BETWEEN DESIGNATED POINTS THE GRADE SHALL BE ESTABLISHED SO AS TO CONFORM TO A STRAIGHT LINE DRAWN BETWEEN SAID DESIGNATED POINTS. ELEVATIONS ARE IN FEET ABOVE U.S.C. & G.S. SEA LEVEL DATUM OF 1929. THIS DRAWING AND THE DATA HEREON ARE HEREBY MADE A PART OF THE SPECIFICATIONS. WORK SHALL BE CONSTRUCTED ACCORDING TO STANDARD SPECIFICATIONS DATED 4/20/56 1/2882, ON FILE IN THE OFFICE OF THE COUNTY ENGINEER AND SHALL BE PROTECTED BY THE COUNTY ENGINEER. BEFORE WORK CAN BE STARTED, THE CONTRACTOR MUST OBTAIN A PERMIT TO EXCAVATE IN COUNTY STREETS FROM THE L.A. COUNTY ROAD DEPT., DISTRICT OFFICE NO. 1 AND PAY A FEE TO THE COUNTY ENGINEER, ROOM 300, COUNTY ENGINEERING BUILDING, 108 WEST SECOND STREET, OR ALIAS VARIOUS "COURTNEY VALLEY" REGIONAL OFFICE, SUFFICIENT TO COVER THE COST OF CONSTRUCTION INSPECTION AND RECORD PLANS. APPROVAL OF THIS PLAN BY THE COUNTY OF LOS ANGELES DOES NOT CONSTITUTE A REPRESENTATION AS TO THE ACCURACY OF THE LOCATION OR THE EXISTENCE OR NON-EXISTENCE OF ANY UNDERGROUND UTILITY PIPE, OR STRUCTURE WITHIN THE LIMITS OF THE PROJECT. THIS NOTE APPLIES TO ALL PAGES. IF WORK IS TO BE DONE IN A STATE HIGHWAY, A PERMIT MUST BE OBTAINED FROM THE STATE OF CALIFORNIA, DIVISION OF HIGHWAY, 120 SOUTH SPRING STREET, LOS ANGELES, CALIFORNIA.

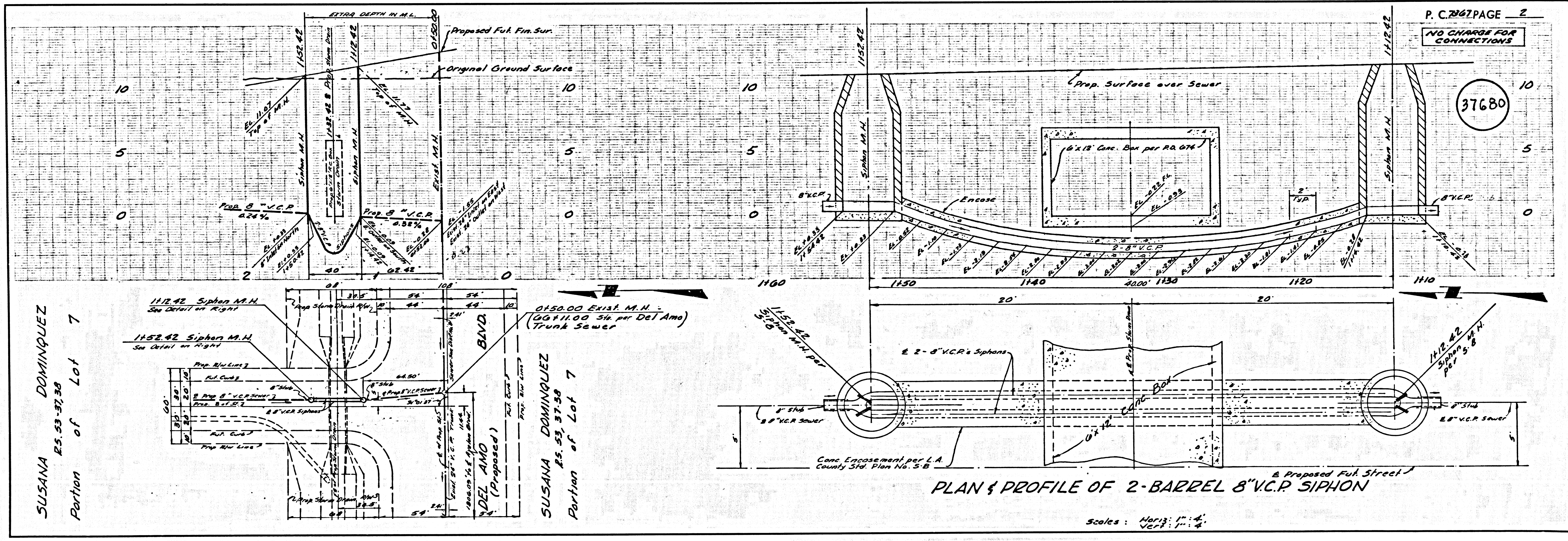
COUNTY OF LOS ANGELES, CALIFORNIA  
 JOHN A. LAMBIE, COUNTY ENGINEER J. D. PARKHURST, CHIEF ENGINEER  
 CO. SAN. DIST. NO. 8  
 APPROVED BY **John A. Lambie** APPROVED BY **J. D. Parkhurst**  
 SANITARY ENGINEER OFFICE ENGINEER  
 SUBMITTED BY **James E. Whitelaw** REGIONAL ENGINEER  
 CHECKED BY **James E. Whitelaw** REG. C.E. NO. 14315  
 APPROVED BY **James E. Whitelaw** SUPERINTENDENT, REPAIR MAINTENANCE

J.N. 0365.74



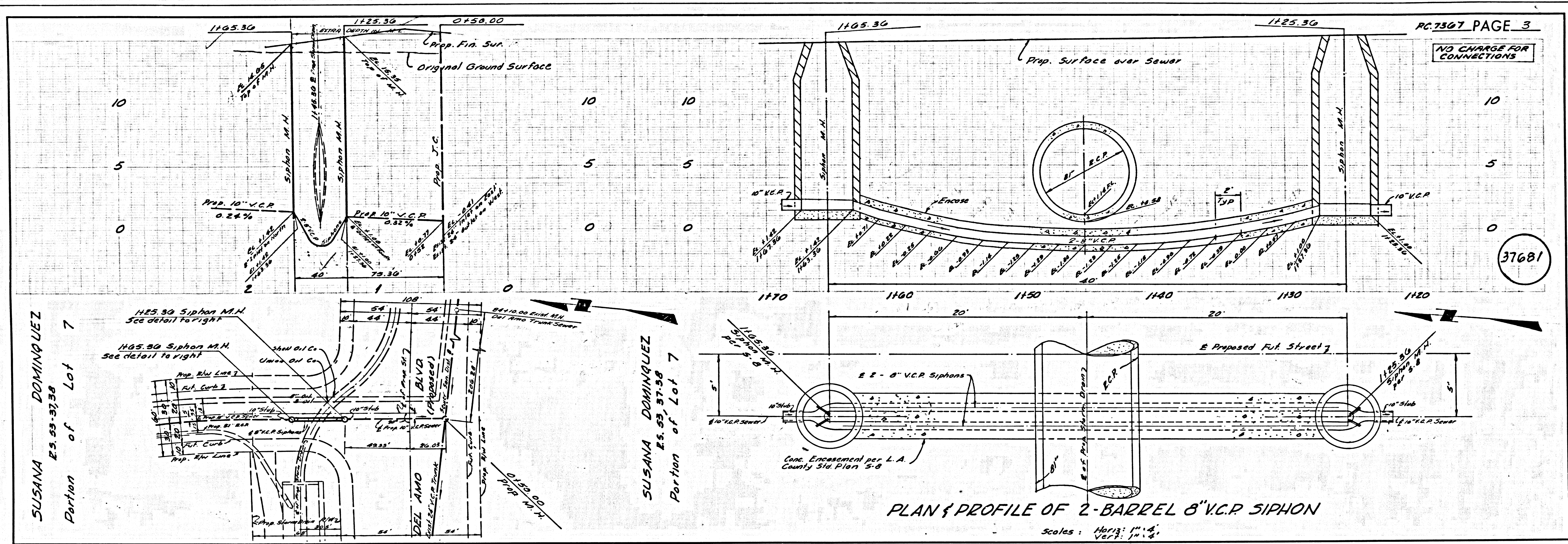
**INDEX MAP**  
 SCALE: 1" = 500'  
 P.C. 7367

**COLLECT CHARGES AS INDICATED**  
 THIS PLAN FOR CONSTRUCTION ONLY, DO NOT ISSUE HOUSE CONNECTION PERMITS  
 John N. Michael 8/13/65



**PLAN & PROFILE OF 2-BARREL 8" V.C.P. SIPHON**

Scales: Horiz. 1" = 40'  
 Vert. 1" = 4'



SUSANA DOMINQUEZ  
Es. 83, 97-38  
Portion of Lot 7

SUSANA DOMINQUEZ  
Es. 83, 97-38  
Portion of Lot 7

PLAN & PROFILE OF 2-BARREL 8" V.C.P. SIPHON

Scales: Horiz: 1" = 4'  
Vert: 1" = 4'

NO CHARGE FOR CONNECTIONS

37681