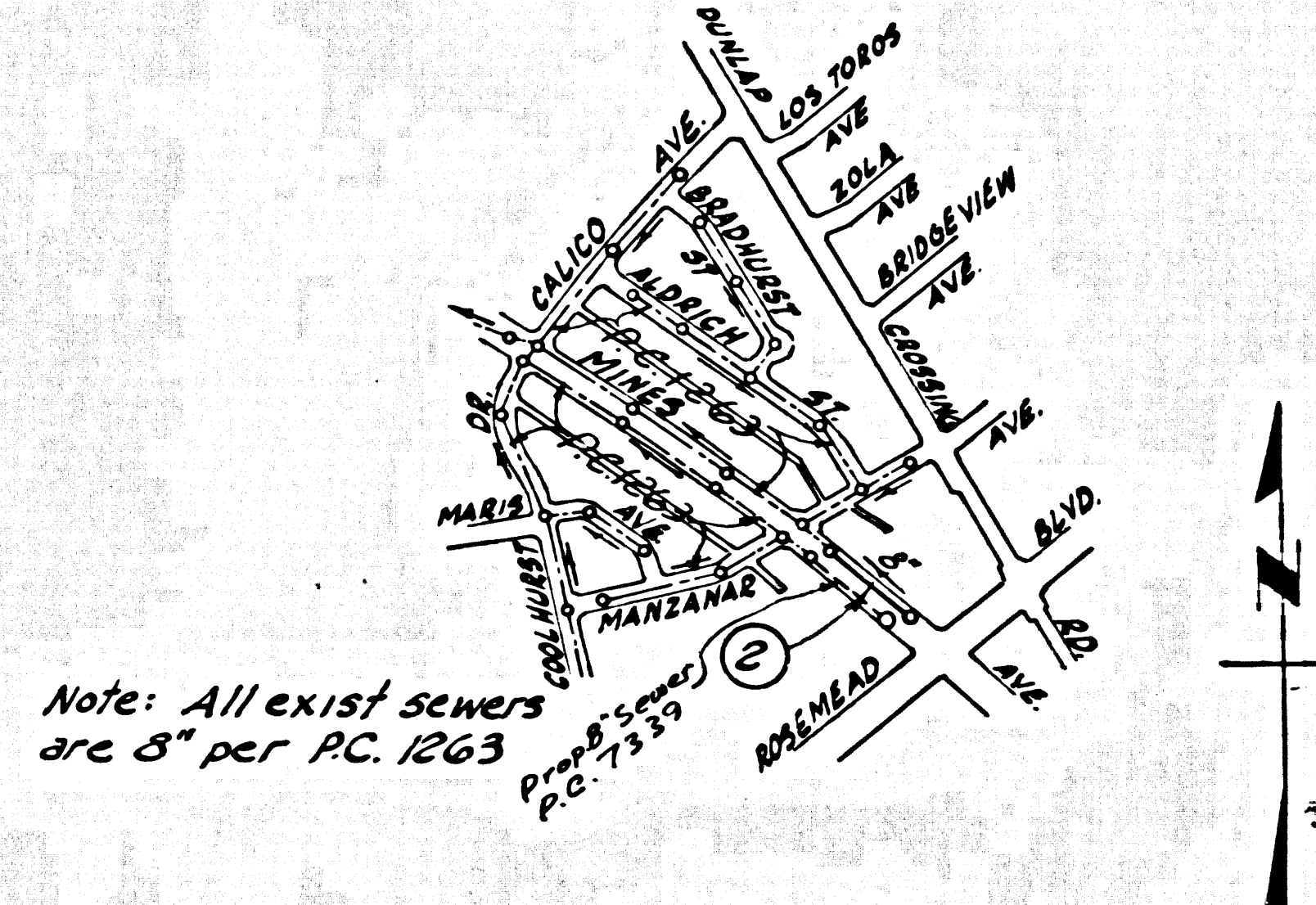


B.M. 25 ELEV. 174.97
 Cal. St. Div. Hwy. Datum. Ransel in E.
 cb. Rosemead Blvd 172.46 & sp. at L.C.
 670' Nly. of & int. Dunlap Crossing

Note: For SY Datum
 Subtract 1.15'



Note: All exist sewers
 are 8" per P.C. 1263

INDEX MAP
 Scale: 1"=600'
 P.C. 7373

PICO RIVERA BLDG. DIST. NO. 11.01

- NOTES:
1. PROVIDE STAKES ON THE PROPERTY LINE OR PROPERTY LINES PRODUCED AT RIGHT ANGLES TO THE SEWER LINE AT THE CENTER LINE OF EACH MANHOLE.
 2. THE CITY ENGINEER SHALL FURNISH THE GRADE SHEETS AND STATIONING FOR ALL HOUSE LATERALS AND TRENCHES AND SHALL PROVIDE STAKES FOR THEM AT THEIR PROPER LOCATIONS WITH STATIONING PLAINLY MARKED. ALL HOUSE LATERALS SHALL BE CONSTRUCTED IN A STRAIGHT ALIGNMENT AT RIGHT ANGLES FROM THE MAIN LINE SEWER EXCEPT AS SHOWN ON THE PLANS. HOUSE LATERALS FROM CHIMNEYS SHALL NOT HAVE AN ANGLE OF LESS THAN 45° WITH THE MAIN LINE SEWER. ANY CHANGE IN ALIGNMENT SHALL BE REQUESTED IN WRITING.
 3. THE CITY ENGINEER SHALL FURNISH THE HOUSE LATERAL DEPTH AT THE PROPERTY LINE BELOW THE TOP OF CURB ELEVATION FOR EACH HOUSE LATERAL ON THE GRADE SHEET.
 4. THE TRENCHES SHALL BE MADE IN THREE YEARS WITHOUT THE APPROVAL OF THE CITY ENGINEER.
 5. THE CONTRACTOR SHALL NOTIFY THE CONSTRUCTION DIVISION BY TELEPHONE, BARRISON 9-4747, EXT. 8189, AT LEAST TWENTY-FOUR HOURS BEFORE STARTING ANY WORK UNDER THIS CONTRACT.
 6. MANHOLES SHALL BE BRICK SEWER STRUCTURES PER 5-3.
 7. USE STANDARD MANHOLE FRAMES AND COVERS, 5-15 EXCEPT AS NOTED.
 8. USE EXTRA STRENGTH PIPE, ALL PIPE IS STANDARD DEPTH EXCEPT AS NOTED.
 9. USE MECHANICAL COMPRESSION JOINTS FOR ALL V.C.P. JOINTS PER SPEC., SEC. 36 & 48 & 49.
 10. IF A POWER POLE IS WITHIN THREE FEET OF THE SEWER, THE SEWER SHALL BE ENCASED, PER 5-23 TWO FEET ON EACH SIDE FROM THE POINT OF INTERFERENCE.
 11. IF DURING THE COURSE OF CONSTRUCTION IT IS DETERMINED THAT THERE IS LESS THAN FOUR FEET OF COVER OVER THE TOP OF A MAIN LINE OR HOUSE LATERAL V.C.P. SEWER WHICH IS NOT INDICATED ON THE PLANS, THE PIPE SHALL BE ENCASED PER 5-23 UNLESS OTHERWISE APPROVED BY THE CITY ENGINEER.
 12. HOUSE LATERALS TO BE CONSTRUCTED WITH INVERTS AT PROPERTY LINE... FEET BELOW CURB GRADE EXCEPT AS NOTED.
 13. RESURFACE ALL TRENCHES WITHIN PAVED AREAS TO MEET L.A. COUNTY ROAD DEPT. OR CALIFORNIA STATE HIGHWAY REQUIREMENTS IN ACCORDANCE WITH PERMITS.
 14. FOR ALLOWABLE MESSAGE TEST USE FORMULA NO. 1000, SPEC. SEC. 64.
 15. All State and Local Trench Safety Orders Will be Rigidly Enforced.
 16. The Contractor shall provide traffic control as arranged with the City of Pico Rivera before construction is started. He shall also post bond with the City to insure compliance with arrangements made.

NO CONNECTIONS FOR THE DISPOSAL OF INDUSTRIAL WASTES SHALL BE MADE TO SEWERS SHOWN ON THESE DRAWINGS WITHOUT WRITTEN PERMISSION FROM THE CHIEF ENGINEER AND GENERAL MANAGER OF THE COUNTY SANITATION DISTRICTS.

COLLECT CHARGES AS INDICATED
 C. Williams 001 0711 Call

PROFILE ALIGNMENT AND GRADE OF P.C. 7373
 SANITARY SEWERS PAGE 1

TO BE CONSTRUCTED IN
 MINES AVENUE
 CASH CONTRACT NO. 56
 PRIVATE CONTRACT NO. 7373

W.S. 36
 1 SHEET, 2 PAGES
 SCALE: HORIZ. 1"=40' VERT. 1"=4' May, 1965
 PREPARED IN THE OFFICES OF
 WEACCO, INC.
 John H. ...
 REG. C. E. NO. 9915
 FOR LEGEND SEE PLAN NO. 5-64

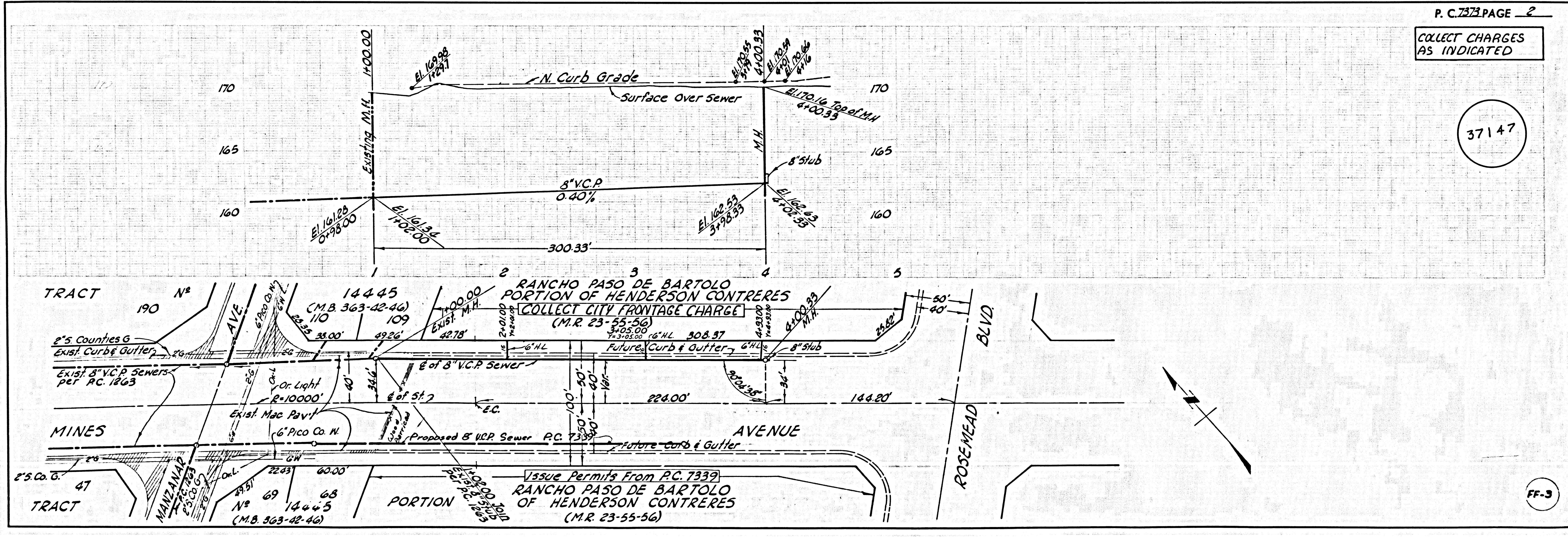
NOTE:
 GRADES TO WHICH THIS IMPROVEMENT IS TO BE CONSTRUCTED ARE SHOWN ON PLANS AND PROFILES. GRADE POINTS FOR TOP OF CURB, CENTER LINE OF STREETS, OR CENTER LINE OF ALLEYS ARE SHOWN BY CIRCLES ON PROFILES. AT ALL POINTS BETWEEN DESIGNATED POINTS THE GRADE SHALL BE ESTABLISHED SO AS TO CORRESPOND TO A STRAIGHT LINE BETWEEN SAID DESIGNATED POINTS. ELEVATIONS ARE IN FEET ABOVE U.S.C. & G.S. SEA LEVEL DATUM OF 1929. THIS DRAWING AND THE DATA HEREON ARE HEREBY MADE A PART OF THE SPECIFICATIONS. WORK SHALL BE CONSTRUCTED ACCORDING TO STANDARD SPECIFICATIONS DATED JAN. 23, 1962, ON FILE IN THE OFFICE OF THE CITY ENGINEER AND SHALL BE PRODUCED ONLY IN THE PRESENCE OF THE CITY ENGINEER. BEFORE WORK CAN BE STARTED, THE CONTRACTOR MUST OBTAIN A PERMIT TO EXCAVATE IN CITY STREETS FROM THE PICO RIVERA CITY HALL, 6615 PARRISON BLVD., PICO RIVERA.

APPROVAL OF THIS PLAN BY THE CITY ENGINEER DOES NOT CONSTITUTE A REPRESENTATION AS TO THE ACCURACY OF THE LOCATION OR OF THE EXISTENCE OR NON-EXISTENCE OF ANY UNDERGROUND UTILITY PIPE, OR STRUCTURE WITHIN THE LIMITS OF THIS PROJECT. THIS NOTE APPLIES TO ALL PAGES.
 IF WORK IS TO BE DONE IN A STATE HIGHWAY, A PERMIT MUST BE OBTAINED FROM THE STATE OF CALIFORNIA, DIVISION OF HIGHWAYS, 138 SOUTH SPRING STREET, LOS ANGELES, CALIFORNIA.

CITY OF PICO RIVERA CALIFORNIA
 L.C. KRAMER, DIRECTOR OF PUBLIC WORKS
 I. D. PARKHURST, CHIEF ENGINEER
 CO. SANITARY DISTRICT NO. 2
 APPROVED BY: [Signature] OFFICE ENGINEER

SUBMITTED BY: [Signature] 6-14-65
 LOS 6881795 REGIONAL ENGINEER 2-1-36-71
 CHECKED BY: [Signature] 4-15-65
 REG. C. E. NO. 2505
 APPROVED BY: [Signature] INDUSTRIAL WASTE DIVISION
 APPROVED BY: [Signature] DIRECTOR OF PUBLIC WORKS

37146



P.C. 7373 PAGE 2
 COLLECT CHARGES AS INDICATED

37147

FF-3