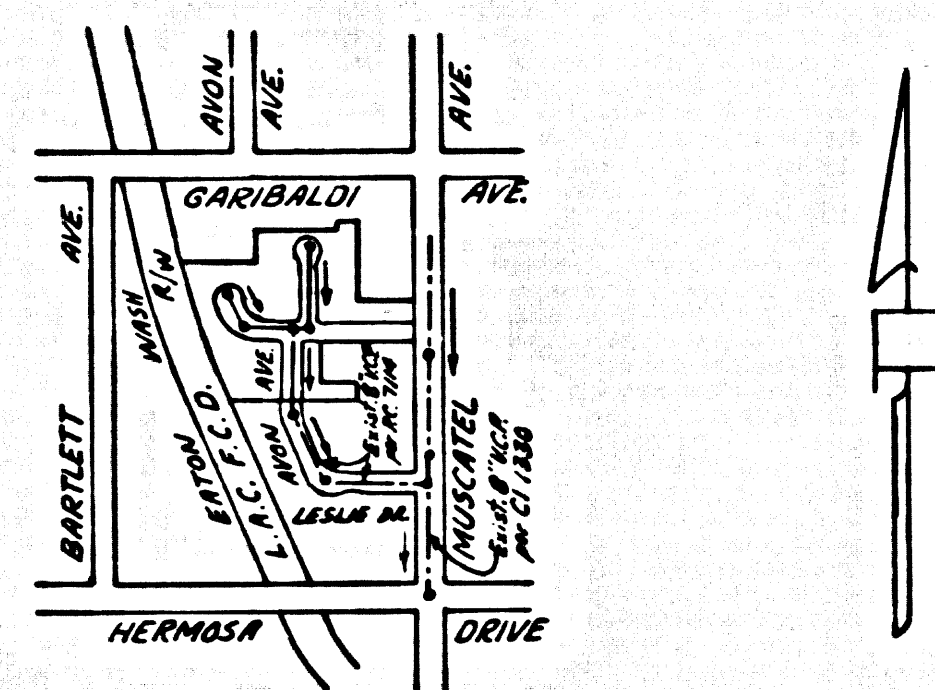


B.M. B.G. 573 ELEV. 436.907  
 BT SPK IN E. CB 6 FT S. BCR @  
 SE COR. ROSEMEAD BLVD. AND  
 GARIBALDI AVE. MKD (TE 139)  
 ARCADIA QUAD. 19 65



INDEX MAP  
 SCALE: 1"=600'  
 TRACT NO. 29922  
 P.C. 7375

PRIVATE ENGINEER'S  
 NOTICE TO CONTRACTOR

The existence and location of any underground utility pipes or structures shown on these plans are obtained by a search of the available records. To the best of our knowledge there are no existing utilities except as shown on this map.

The Contractor is advised to take due precautionary measures to protect the utility lines shown and any other lines not of record or not shown on this drawing.

No water well within 200'  
 NE 1/4 Sec 14 T. 5 N. R. 17 E.

### TEMPLE CITY BLDG. DIST. NO. 5

- NOTES:
1. PROVIDE STAKES ON THE PROPERTY LINE OR PROPERTY LINES PRODUCED AT RIGHT ANGLES TO THE SEWER LINE AT THE CENTER LINE OF EACH MANHOLE.
  2. NO REPRESENTATIVE OF THE COUNTY ENGINEER WILL SURVEY OR LAY OUT ANY PORTION OF THE WORK.
  3. THE PRIVATE ENGINEER SHALL FURNISH THE COUNTY ENGINEER WITH GRADE SHEETS AND STATIONING FOR ALL HOUSE LATERALS AND Y BRANCHES AND SHALL PROVIDE STAKES FOR THEM AT THEIR PROPER LOCATIONS WITH STATIONING PLAINLY MARKED. ALL HOUSE LATERALS SHALL BE CONSTRUCTED IN A STRAIGHT ALIGNMENT AT RIGHT ANGLES FROM THE MAIN LINE SEWER EXCEPT AS SHOWN ON THE PLANS. HOUSE LATERALS FROM CURBSIDE SHALL NOT HAVE AN ANGLE OF LESS THAN 45° WITH THE MAIN LINE SEWER. ANY CHANGE IN ALIGNMENT SHALL BE REQUESTED IN WRITING BY THE PRIVATE ENGINEER.
  4. THE PRIVATE ENGINEER SHALL FURNISH THE HOUSE LATERAL DEPTH AT THE PROPERTY LINE BELOW THE TOP OF CURB ELEVATION FOR EACH HOUSE LATERAL ON THE GRADE SHEET.
  5. NO REVISIONS SHALL BE MADE IN THESE PLANS WITHOUT THE APPROVAL OF THE COUNTY ENGINEER.
  6. THE CONTRACTOR SHALL NOTIFY THE CONSTRUCTION DIVISION BY TELEPHONE, HANSDON 9-2747, EXT. 8131, AT LEAST TWENTY-FOUR HOURS BEFORE STARTING ANY WORK UNDER THIS CONTRACT.
  7. MANHOLES SHALL BE BRICK SEWER STRUCTURES PER S-3 PRECAST CONCRETE MANHOLES PER S-4 OR S-6 MAY BE USED AS AN ALTERNATE IN LOCATIONS APPROVED BY THE COUNTY ENGINEER.
  8. USE STANDARD MANHOLE FRAMES AND COVERS, S-15, EXCEPT AS NOTED.
  9. MANHOLE TOPS IN UNPAVED RIGHTS-OF-WAY TO BE SIX INCHES ABOVE FINISHED GRADE.
  10. USE EXTRA STRENGTH PIPE. ALL PIPE IS STANDARD DEPTH EXCEPT AS NOTED.
  11. USE OR MECHANICAL COMPRESSION JOINTS FOR ALL V.C.P. JOINTS PER SPECS., SECS. 34 & 48, 49.
  12. WHENEVER GROUND WATER IS ENCOUNTERED DURING THE CONSTRUCTION OF THE SEWERS, THE V.C.P. JOINTS SHALL BE MECHANICAL COMPRESSION JOINTS PER SPECS., SEC. 34, 48 & 49.
  13. IF A POWER POLE IS WITHIN THREE FEET OF THE SEWER, THE SEWER SHALL BE ENCASED, PER S-23 TWO FEET ON EITHER SIDE FROM THE POINT OF INTERFERENCE.
  14. IF DURING THE COURSE OF CONSTRUCTION IT IS DETERMINED THAT THERE IS LESS THAN FOUR FEET OF COVER OVER THE TOP OF A MAIN LINE OR HOUSE LATERAL V.C.P. SEWER WHICH IS NOT INDICATED ON THE PLANS, THE PIPE SHALL BE ENCASED PER S-23 UNLESS OTHERWISE APPROVED BY THE COUNTY ENGINEER.
  15. HOUSE LATERALS TO BE CONSTRUCTED WITH INVERTS AT PROPERTY LINE... FEET BELOW CURB GRADE EXCEPT AS NOTED.
  16. REINFORCE ALL BRIDGES WITHIN PAVED AREAS TO MEET L.A. COUNTY ROAD DEPT. OR CALIFORNIA STATE HIGHWAY REQUIREMENTS IN ACCORDANCE WITH PERMITS.
  17. FOR ALLOWABLE LEAKAGE TEST USE FORMULA NO. 1, R....., SPECS., SEC. 54.
  18. ALL STATE AND LOCAL TRAVEL SAFETY ORDINANCES WILL BE RIGIDLY ENFORCED.

SPECIAL NOTE:  
 Existing House Lateral on Sewer per C.I. 1330, Permit No. 3102, serving Lot No. 1, Tract No. 29922, is to remain in use. At Sta. 7+77.3 on Muscatel Ave.

COLLECT CHARGES  
 AS INDICATED  
*L. J. Jones*

NO CONNECTIONS FOR THE DISPOSAL OF INDUSTRIAL WASTES SHALL BE MADE TO SEWERS SHOWN ON THESE DRAWINGS WITHOUT WRITTEN PERMISSION FROM THE CHIEF ENGINEER AND GENERAL MANAGER OF THE COUNTY SANITATION DISTRICTS.

PROFILE ALIGNMENT AND GRADE OF P.C. 7375  
 SANITARY SEWERS PAGE 1

TO BE CONSTRUCTED IN  
 TRACT NO. 29922

PRIVATE CONTRACT NO. 7375

W.S. 44, B-4  
 1 SHEET, 2 PAGES  
 SCALE: VERT. 1"=4' HORIZ. 1"=40' MAY, 1965

37192

PREPARED IN THE OFFICES OF  
 HILLCREST ENGINEERING & SURVEYING CO., INC.

By *Robert H. Franklin*  
 KAREL H. TONGIET REG. C.E. NO. 1832

FOR LEGEND SEE PLAN NO. S-64

NOTE:  
 GRADES TO WHICH THIS IMPROVEMENT IS TO BE CONSTRUCTED ARE SHOWN ON PLANS AND PROFILES. GRADE POINTS FOR TOP OF CURBS, CENTER LINE OF STREETS, OR CENTER LINE OF ALLEYS ARE SHOWN BY CIRCLES ON PROFILES. AT ALL POINTS BETWEEN DESIGNATED POINTS THE GRADE SHALL BE ESTABLISHED SO AS TO CONFORM TO A STRAIGHT LINE DRAWN BETWEEN SAID DESIGNATED POINTS. ELEVATIONS ARE IN FEET ABOVE U.S.C. & G.S. MEAN LEVEL DATUM OF 1929.  
 THIS DRAWING AND THE DATA HEREON ARE HEREBY MADE A PART OF THE SPECIFICATIONS.  
 WORK SHALL BE CONSTRUCTED ACCORDING TO STANDARD SPECIFICATIONS DATED 1955, 1962, ON FILE IN THE OFFICE OF THE COUNTY ENGINEER AND SHALL BE PROTECTED ONLY AT THE RESIDENCE OF THE COUNTY ENGINEER.  
 BEFORE WORK CAN BE STARTED, THE CONTRACTOR MUST OBTAIN A PERMIT TO EXCAVATE IN COUNTY STREETS FROM THE L.A. COUNTY ROAD DEPT., DISTRICT OFFICE NO. 1, AND A PERMIT TO THE COUNTY ENGINEER, ROOM 302, COUNTY ENGINEERING BUILDING, 308 WEST SECOND STREET OR..... SANITATION DISTRICTS REGIONAL OFFICE, SUFFICIENT TO COVER THE COST OF CONSTRUCTION INSPECTION AND RECORD PLANS.  
 APPROVAL OF THIS PLAN BY THE COUNTY OF LOS ANGELES DOES NOT CONSTITUTE A REPRESENTATION AS TO THE ACCURACY OF THE LOCATION OR OF THE EXISTENCE OR NON-EXISTENCE OF ANY UNDERGROUND UTILITY PIPE, OR STRUCTURE WITHIN THE LIMITS OF THIS PROJECT. THIS NOTE APPLIES TO ALL PAGES.  
 IF WORK IS TO BE DONE IN A STATE HIGHWAY, A PERMIT MUST BE OBTAINED FROM THE STATE OF CALIFORNIA, DIVISION OF HIGHWAYS, 128 SOUTH SPRING STREET, LOS ANGELES, CALIFORNIA.

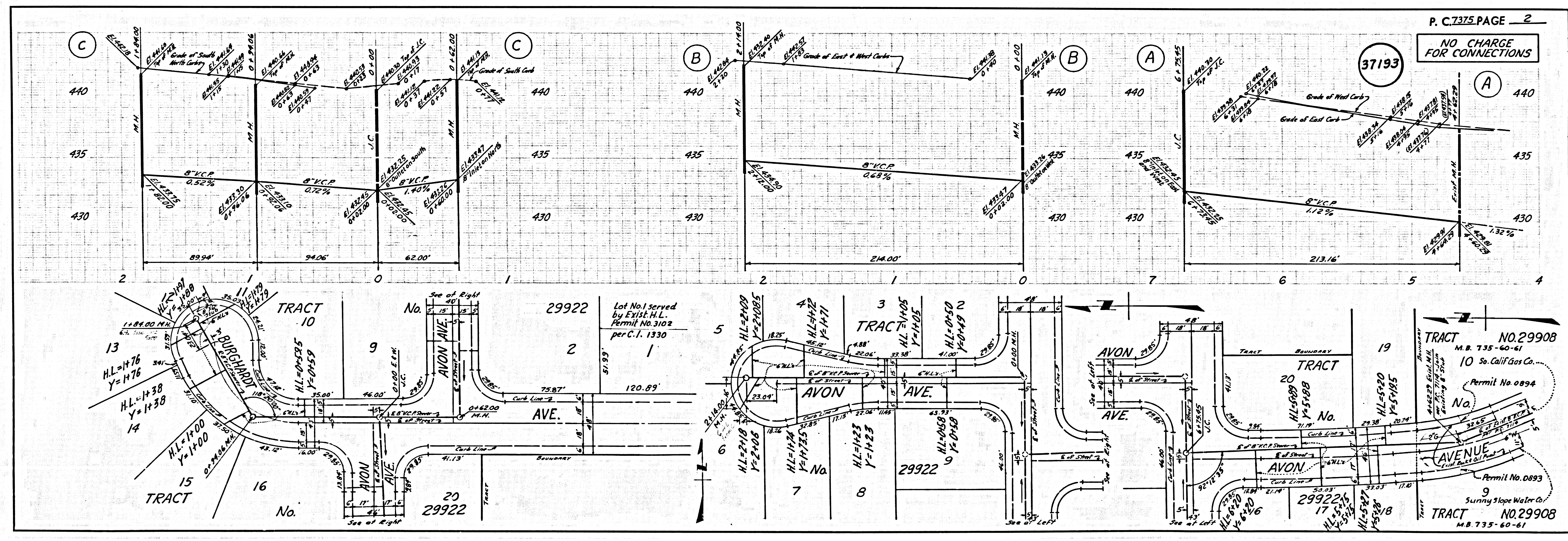
COUNTY OF LOS ANGELES, CALIFORNIA  
 JOHN A. LAMBIE, COUNTY ENGINEER J. D. PARKHURST, CHIEF ENGINEER

APPROVED BY *Robert H. Franklin* ASSISTANT SANITATION ENGINEER APPROVED BY *J. D. Parkhurst* CHIEF ENGINEER

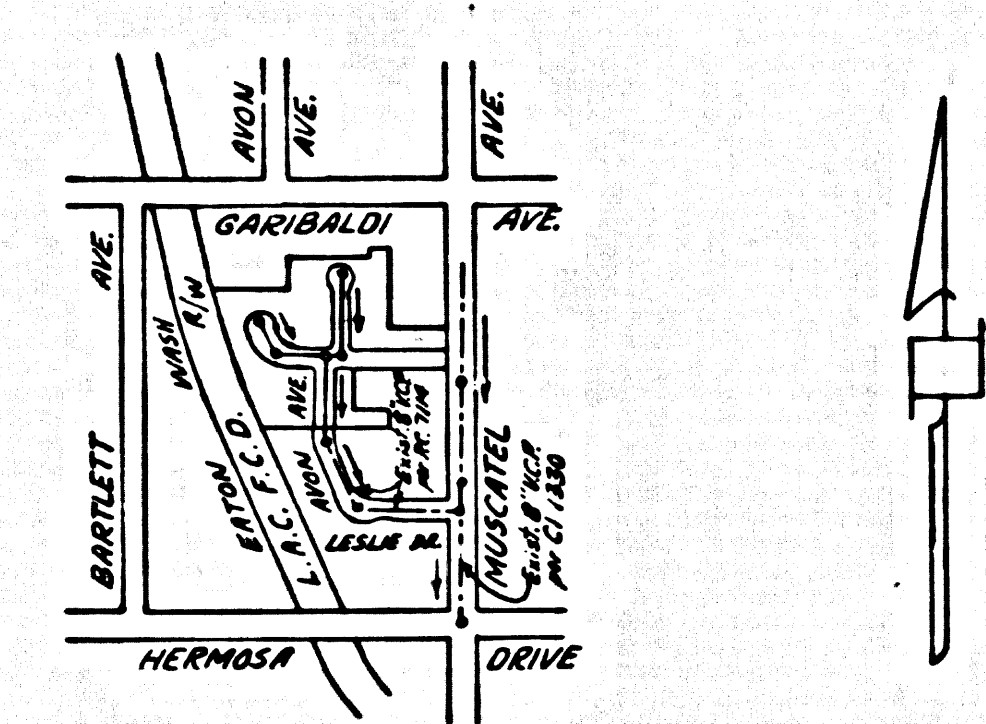
SUBMITTED BY *Robert H. Franklin* REGIONAL ENGINEER

CHECKED BY *J. D. Parkhurst* REG. C.E. NO. 1832

J. N. O365.79



B.M. B.G. 573 ELEV. 436.907  
 BT. SPK. IN E. CB. 6 FT. S. BCR @  
 SE COR. ROSEMEAD BLVD. AND  
 GARIBALDI AVE. MKD. (TE 139)  
 ARCADIA QUAD. 19.65



INDEX MAP  
 SCALE: 1"=600'  
 TRACT NO. 29922  
 P.C. 7375

PRIVATE ENGINEER'S  
 NOTICE TO CONTRACTOR  
 The existence and location of any underground utility pipes or structures shown on these plans are obtained by a search of the available records. No field check of the indicated locations are made and no warranties are given on this map.  
 The Contractor is required to take the necessary precautions to protect the utility lines shown and any other lines not of record or not shown on this drawing.

No water well within 200'  
 NE 1/4 Sec. 14, T. 17 N., R. 12 E.

### TEMPLE CITY BLDG. DIST. NO. 5

- NOTES:
- PROVIDE STAKES ON THE PROPERTY LINE OR PROPERTY LINES PRODUCED AT RIGHT ANGLES TO THE SEWER LINE AT THE CENTER LINE OF EACH MANHOLE.
  - NO REPRESENTATIVE OF THE COUNTY ENGINEER WILL SURVEY OR LAY OUT ANY PORTION OF THE WORK.
  - THE PRIVATE ENGINEER SHALL FURNISH THE COUNTY ENGINEER WITH GRADE SHEETS AND STATIONING FOR ALL HOUSE LATERALS AND Y BRANCHES AND SHALL PROVIDE STAKES FOR THEM AT THEIR PROPER LOCATIONS WITH STATIONING PLAINLY MARKED. ALL HOUSE LATERALS SHALL BE CONSTRUCTED IN A STRAIGHT ALIGNMENT AT RIGHT ANGLES FROM THE MAIN LINE SEWER EXCEPT AS SHOWN ON THE PLANS. HOUSE LATERALS FROM CHIMNEYS SHALL NOT HAVE AN ANGLE OF LESS THAN 45° WITH THE MAIN LINE SEWER. ANY CHANGE IN ALIGNMENT SHALL BE REQUESTED IN WRITING BY THE PRIVATE ENGINEER.
  - THE PRIVATE ENGINEER SHALL FURNISH THE HOUSE LATERAL DEPTH AT THE PROPERTY LINE BELOW THE TOP OF CURB ELEVATION FOR EACH HOUSE LATERAL ON THE GRADE SHEET.
  - NO REVISIONS SHALL BE MADE IN THESE PLANS WITHOUT THE APPROVAL OF THE COUNTY ENGINEER.
  - THE CONTRACTOR SHALL NOTIFY THE CONSTRUCTION DIVISION BY TELEPHONE, MADISON 9-4747, EXT. 8188, AT LEAST TWENTY-FOUR HOURS BEFORE STARTING ANY WORK UNDER THIS CONTRACT.
  - MANHOLES SHALL BE BRICK SEWER STRUCTURES PER S. 3. PRECAST CONCRETE MANHOLES PER S. 4 OR S. 6 MAY BE USED AS AN ALTERNATE IN LOCATIONS APPROVED BY THE COUNTY ENGINEER.
  - USE STANDARD MANHOLE FRAMES AND COVERS, S-15, EXCEPT AS NOTED.
  - MANHOLE POPS IN UNIMPROVED ROADS OR WAYS TO BE SET SIX INCHES ABOVE FINISHED GRADE.
  - USE EXTRA STRENGTH PIPE - 48 PIPE IS STANDARD DEPTH EXCEPT AS NOTED.
  - USE OR MECHANICAL COMPRESSION JOINTS FOR ALL V.C.P. JOINTS PER SPECS., SECS. 34 & 40, 45.
  - WHERE EVER GROUND WATER IS ENCOUNTERED DURING THE CONSTRUCTION OF THE SEWERS, THE V.C.P. JOINTS SHALL BE MECHANICAL COMPRESSION JOINTS PER SPECS., SEC. 34, 40 & 45.
  - IF A POWER POLE IS WITHIN THREE FEET OF THE SEWER, THE SEWER SHALL BE ENCASED, PER S. 2-3 TWO FEET ON EITHER SIDE FROM THE POINT OF INTERFERENCE.
  - IF DURING THE COURSE OF CONSTRUCTION IT IS DETERMINED THAT THERE IS LESS THAN FOUR FEET OF COVER OVER THE TOP OF A MAIN LINE OR HOUSE LATERAL V.C.P. SEWER WHICH IS NOT INDICATED ON THE PLANS, THE PIPE SHALL BE ENCASED PER S. 2-3 UNLESS OTHERWISE APPROVED BY THE COUNTY ENGINEER.
  - HOUSE LATERALS TO BE CONSTRUCTED WITH INVERTS AT PROPERTY LINE, 8" FEET BELOW CURB GRADE EXCEPT AS NOTED.
  - RESURFACE ALL FINISHED WITHIN PAVED AREAS TO MEET L.A. COUNTY ROAD DEPT. OR CALIFORNIA STATE HIGHWAY REQUIREMENTS IN ACCORDANCE WITH PERMITS.
  - FOR ALLOWABLE LEAKAGE TEST USE FORMULA NO. 1, SPECS., SEC. 54.
  - ALL STATE AND LOCAL TRENCH SAFETY ORDINANCES WILL BE RIGIDLY ENFORCED.

SPECIAL NOTE:  
 Existing House Lateral on Sewer per C.I. 1330, Permit No. 3102, serving Lot No. 1, Tract No. 29922, is to remain in use. At Sta. 7+77.3 on Muscatel Ave.

COLLECT CHARGES  
 AS INDICATED  
*L. J. James*

NO CONNECTIONS FOR THE DISPOSAL OF INDUSTRIAL WASTES SHALL BE MADE TO SEWERS SHOWN ON THESE DRAWINGS WITHOUT WRITTEN PERMISSION FROM THE CHIEF ENGINEER AND GENERAL MANAGER OF THE COUNTY SANITATION DISTRICTS.

PROFILE ALIGNMENT AND GRADE OF  
**SANITARY SEWERS** PAGE 1

TRACT NO. 29922

PRIVATE CONTRACT NO. 7375

W.S. 44, B-4  
 SHEET 1 OF 2 PAGES

37192

SCALE: VERT. 1"=4' HORIZ. 1"=40'  
 MAY 1965

PREPARED IN THE OFFICES OF  
 HILLCREST ENGINEERING & SURVEYING CO., INC.

By: *Karel H. Tounglet*  
 KAREL H. TOUNGLET REG. C. E. NO. 1632

FOR LEGEND SEE PLAN NO. S-64

NOTE:  
 GRADES TO WHICH THIS IMPROVEMENT IS TO BE CONSTRUCTED ARE SHOWN ON PLANS AND PROFILES. GRADE POINTS FOR TOP OF CURB, CENTER LINE OF SEWER, OR CENTER LINE OF ALLEYS ARE SHOWN BY CIRCLES ON PROFILES. ALL POINTS BETWEEN DESIGNATED ELEVATIONS ARE IN FEET ABOVE U.S.C. & G.S. MEAN SEA LEVEL DATUM OF 1929.  
 THIS DRAWING AND THE DATA HEREON ARE HEREBY MADE A PART OF THE SPECIFICATIONS.  
 WORK SHALL BE CONSTRUCTED ACCORDING TO STANDARD SPECIFICATIONS DATED 1962, ON FILE IN THE OFFICE OF THE COUNTY ENGINEER AND SHALL BE PROSECUTED ONLY IN THE PRESENCE OF THE COUNTY ENGINEER.  
 BEFORE WORK CAN BE STARTED, THE CONTRACTOR MUST OBTAIN A PERMIT TO EXCAVATE IN COUNTY STREETS FROM THE L.A. COUNTY ROAD DEPT., DISTRICT OFFICE NO. 1, 100 S. WILSON ST., LOS ANGELES, CALIF. COUNTY ENGINEER'S BUILDING, CONSTRUCTION INSPECTION AND RECORD PLANS.  
 APPROVAL OF THIS PLAN BY THE COUNTY OF LOS ANGELES DOES NOT CONSTITUTE A REPRESENTATION AS TO THE ACCURACY OF THE LOCATION OF OR THE EXISTENCE OR NON-EXISTENCE OF ANY UNDERGROUND UTILITY PIPE, OR STRUCTURE WITHIN THE LIMITS OF THIS PROJECT. THIS NOTE APPLIES TO ALL PAGES.  
 IF WORK IS TO BE DONE IN A STATE HIGHWAY, A PERMIT MUST BE OBTAINED FROM THE STATE OF CALIFORNIA, DIVISION OF HIGHWAYS, 120 SOUTH SPRING STREET, LOS ANGELES, CALIFORNIA.

COUNTY OF LOS ANGELES, CALIFORNIA  
 JOHN A. LAMBIE, COUNTY ENGINEER J. D. PARKHURST, CHIEF ENGINEER  
 CO. SAN. DIST. NO. 5  
 APPROVED BY: *R. S. K.* APPROVED BY: *J. D. Parkhurst*  
 ASSISTANT SANITARY ENGINEER OFFICE ENGINEER  
 SUBMITTED BY: *Rosemary Williams*  
 REGIONAL ENGINEER  
 CHECKED BY: *J. J. James*  
 REG. C. E. NO. 1632

J.N. Q365.79

