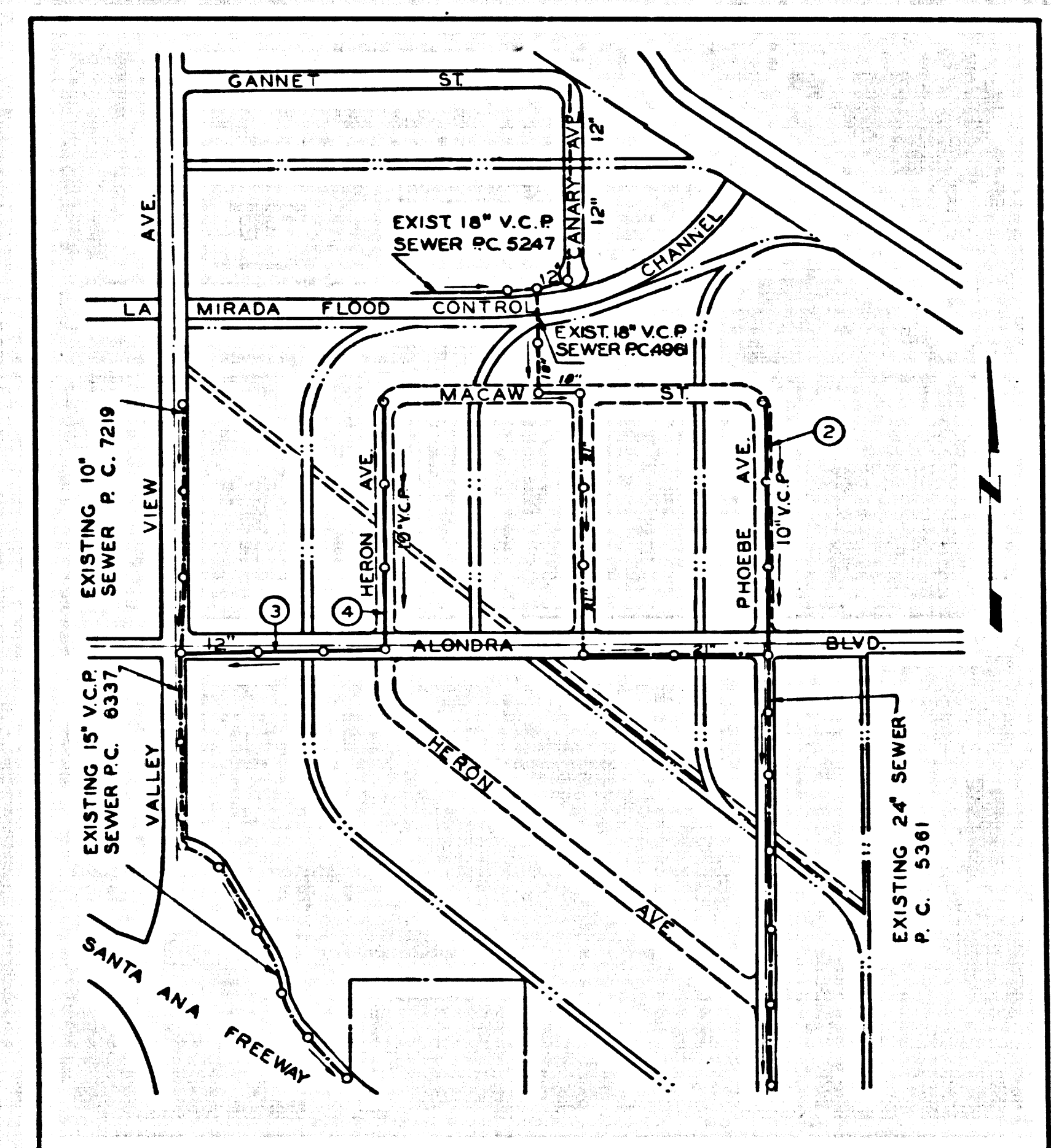


B.M. VIEW ELEV. 60.431
 Note: Subtract 0.325 from all elevations to agree with 1962 Adj. Elev. 60.106



INDEX - PC 7381
 ALONDRA BOULEVARD
 SCALE: 1" = 80'

LA MIRADA BLDG. DIST. NO. 408

PROFILE ALIGNMENT AND GRADE OF
 SANITARY SEWERS P.C. 7381
 TO BE CONSTRUCTED IN
 ALONDRA BOULEVARD

PRIVATE CONTRACT NO. 7381

W.S. 34
 2 SHEETS, 4 PAGES
 SCALE: VERT. 1" = 4' HORIZ. 1" = 40' MAY, 1965
 PREPARED IN THE OFFICES OF
 CENTRAL MANUFACTURING DISTRICT INC.
 BY: *Arthur J. Cook*
 REG. C.E. NO. 7709

37982

- NOTES:
- PROVIDE STAKES ON THE PROPERTY LINE OR PROPERTY LINES PRODUCED AT RIGHT ANGLES TO THE SEWER LINE AT THE CENTER LINE OF EACH MANHOLE.
 - NO REPRESENTATIVE OF THE CITY ENGINEER WILL SURVEY OR LAY OUT ANY PORTION OF THE WORK.
 - THE PRIVATE ENGINEER SHALL FURNISH THE CITY ENGINEER WITH GRADE SHEETS AND STATIONING FOR ALL HOUSE LATERALS AND Y BRANCHES AND SHALL PROVIDE STAKES FOR THEM AT THEIR PROPER LOCATIONS WITH STATIONING PLAINLY MARKED. ALL HOUSE LATERALS SHALL BE CONSTRUCTED IN A STRAIGHT ALIGNMENT AT RIGHT ANGLES FROM THE MAIN LINE SEWER EXCEPT AS SHOWN ON THE PLANS. HOUSE LATERALS FROM CHIMNEYS SHALL NOT HAVE AN ANGLE OF LESS THAN 45° WITH THE MAIN LINE SEWER. ANY CHANGE IN ALIGNMENT SHALL BE REQUESTED IN WRITING BY THE PRIVATE ENGINEER.
 - THE PRIVATE ENGINEER SHALL FURNISH THE HOUSE LATERAL DEPTH AT THE PROPERTY LINE BELOW THE TOP OF CURB ELEVATION FOR EACH HOUSE LATERAL ON THE GRADE SHEET.
 - NO REVISIONS SHALL BE MADE IN THESE PLANS WITHOUT THE APPROVAL OF THE CITY ENGINEER.
 - THE CONTRACTOR SHALL NOTIFY THE CONSTRUCTION DIVISION BY TELEPHONE, MADISON 7-4747, EXT. 8155, AT LEAST TWENTY-FOUR HOURS BEFORE STARTING ANY WORK UNDER THIS CONTRACT.
 - MANHOLES SHALL BE 5-8 PRECAST CONCRETE MANHOLES PER S-3 OR S-6 MAY BE USED AS AN ALTERNATE IN LOCATIONS APPROVED BY THE CITY ENGINEER.
 - USE STANDARD MANHOLE FRAMES AND COVERS, S-18, EXCEPT AS NOTED.
 - MANHOLE TOPS OF UNIMPROVED DRIVEWAYS TO BE 6-INCHES IN THE FINISHED GRADE.
 - USE EXTRA STRENGTH PIPE. ALL PIPE IS STANDARD DEPTH EXCEPT AS NOTED.
 - USE MECHANICAL COMPRESSION JOINTS FOR ALL V.C.P. JOINTS PER SPECS., SECS. 34, 46, & 49.
12. IF A POWER POLE IS WITHIN THREE FEET OF THE SEWER, THE SEWER SHALL BE ENCASED, S-23, TWO FEET ON EACH SIDE FROM THE POINT OF INTERFERENCE.
13. IF DURING THE COURSE OF CONSTRUCTION IT IS DETERMINED THAT THERE IS LESS THAN FOUR FEET OF COVER OVER THE TOP OF A MAIN LINE OR HOUSE LATERAL V.C.P. SEWER WHICH IS NOT INDICATED ON THE PLANS, THE PIPE SHALL BE ENCASED PER S-23 UNLESS OTHERWISE APPROVED BY THE CITY ENGINEER.
14. HOUSE LATERALS TO BE CONSTRUCTED WITH INVERTS AT 18" RISE PER FOOT TO PROPERTY LINE.
15. MINORFACE ALL TRENCHES WITHIN PAVED AREAS TO MEET L.A. COUNTY ROAD DEPT. OR CALIFORNIA STATE HIGHWAY REQUIREMENTS IN ACCORDANCE WITH PERMITS.
16. FOR ALLOWABLE LEAKAGE TEST USE FORMULA NO. 1, 2, 3, 4, 5, 6, 7, 8, 9, 10, 11, 12, 13, 14, 15, 16, 17, 18, 19, 20, 21, 22, 23, 24, 25, 26, 27, 28, 29, 30, 31, 32, 33, 34, 35, 36, 37, 38, 39, 40, 41, 42, 43, 44, 45, 46, 47, 48, 49, 50, 51, 52, 53, 54, 55, 56, 57, 58, 59, 60, 61, 62, 63, 64, 65, 66, 67, 68, 69, 70, 71, 72, 73, 74, 75, 76, 77, 78, 79, 80, 81, 82, 83, 84, 85, 86, 87, 88, 89, 90, 91, 92, 93, 94, 95, 96, 97, 98, 99, 100.
17. FROM STA. 0+00.00 TO STA. 0+48.00, PLACE & CONSTRUCT SEWER BY JACKING PIPE.
18. THE FINISHES SHALL:
- A-BE 18" HIGH CURB-TWO FEET HIGH AND THE ROOF SHALL BE SLOPED PER SPECS. SEC. 52.
 - B-BE 60 SPACED AND SUPPORTED AS TO BE SAFE FROM CAVING.
 - C-BE LEFT FIBER-FIBROUS WASTE.
 - D-BE OPEN TO THE SURFACE AT EACH END PRIOR TO ANY WORK THEREIN OTHER THAN BRICKING OR SHORING.
 - E-BE GALVANIZED-PIPE-3" RINGS SEC-52.
19. ALL C.I.P. SHALL BE CLASS 150 OR BETTER WITH "TYTON" JOINTS. MECHANICAL JOINTS OTHER THAN "TYTON" MAY BE USED IF FIRST APPROVED BY THE CITY ENGINEER.

NOTE:
 GRADES TO WHICH THIS IMPROVEMENT IS TO BE CONSTRUCTED ARE SHOWN ON PLANS AND PROFILES. GRADE POINT, FOR TOP OF CURB, CENTER LINE OF STREET, OR CENTER LINE OF ALLEYS ARE SHOWN BY CIRCLES ON PROFILES. AT ALL POINTS BETWEEN DESIGNATED ELEVATIONS ARE TO BE ESTABLISHED TO A STRAIGHT LINE DRAWN BETWEEN SAID DESIGNATED POINTS.
 THIS DRAWING AND THE DATA HEREON ARE HEREBY MADE A PART OF THE SPECIFICATIONS.
 THESE SHALL BE CONSIDERED ACCORDING TO STANDARD SPECIFICATIONS DATED MAY 23, 1965, ON FILE IN THE OFFICE OF THE COUNTY ENGINEER AND SHALL BE PROSECUTED ONLY IN THE PRESENCE OF THE COUNTY ENGINEER.
 BEFORE WORK CAN BE STARTED THE CONTRACTOR MUST OBTAIN A PERMIT TO EXCAVATE FROM THE CITY ENGINEER AND PAY A FEE TO THE CITY OF LOS ANGELES, 6000A CENTINELA ROAD DEPT. DISTRICT OFFICE NO. 1, AND PAY A FEE TO THE CITY OF LOS ANGELES, 6000A CENTINELA ROAD DEPT. DISTRICT OFFICE NO. 1, SUFFICIENT TO COVER THE COST OF CONSTRUCTION INSPECTION AND RECORD PLANS.
 APPROVAL OF THIS PLAN BY THE CITY OF LOS ANGELES DOES NOT CONSTITUTE A REPRESENTATION AS TO THE ACCURACY OF THE LOCATION OF OR THE EXISTENCE OR NON-EXISTENCE OF ANY UNDERGROUND UTILITY PIPE, OR STRUCTURE WITHIN THE LIMITS OF THIS PROJECT. THIS NOTE APPLIES TO ALL PAGES.
 IF WORK IS TO BE DONE IN A STATE HIGHWAY, A PERMIT MUST BE OBTAINED FROM THE STATE OF CALIFORNIA, DIVISION OF HIGHWAYS, 128 SOUTH SPRING STREET, LOS ANGELES, CALIFORNIA.

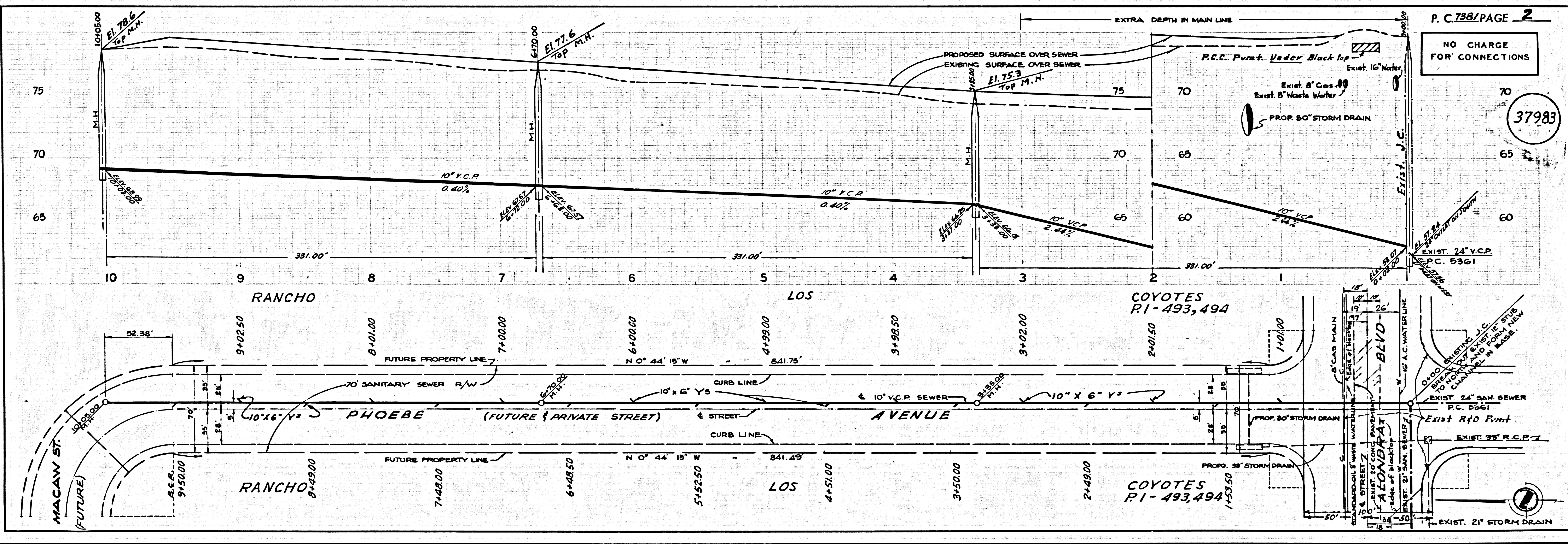
CITY OF LA MIRADA, CALIFORNIA
 JOHN A. LAMBIE, CITY ENGINEER
 J. D. PARKURST, CHIEF ENGINEER
 CO. SAN. DIST. NO. 18

APPROVED BY: *R. J. Cook* ASSISTANT SANITATION ENGINEER
 APPROVED BY: *J. D. Parkurst* OFFICE ENGINEER

SUBMITTED BY: *Arthur J. Cook* REGIONAL ENGINEER A.C.E. 3837
 LOS ANGELES
 CHECKED BY: *S. V. Wade* REG. C.E. NO. 1

COLLECT CHARGES AS INDICATED
Arthur J. Cook
 APPROVED BY: *R. J. Cook* INDUSTRIAL WASTE DIVISION

NOTICE TO CONTRACTORS:
 The existence and approximate location of underground utilities or structures were determined by a search of the available public records. To the best of our knowledge, there are no existing underground utilities or structures except as shown on this map. The contractor is required to take all precautionary measures to protect the utilities and structures shown and any other utilities or structures at the site. It shall be the contractor's responsibility to notify the owners of utilities or structures concerned before starting work.



P. C. 7381/PAGE 2
 NO CHARGE FOR CONNECTIONS
 37983