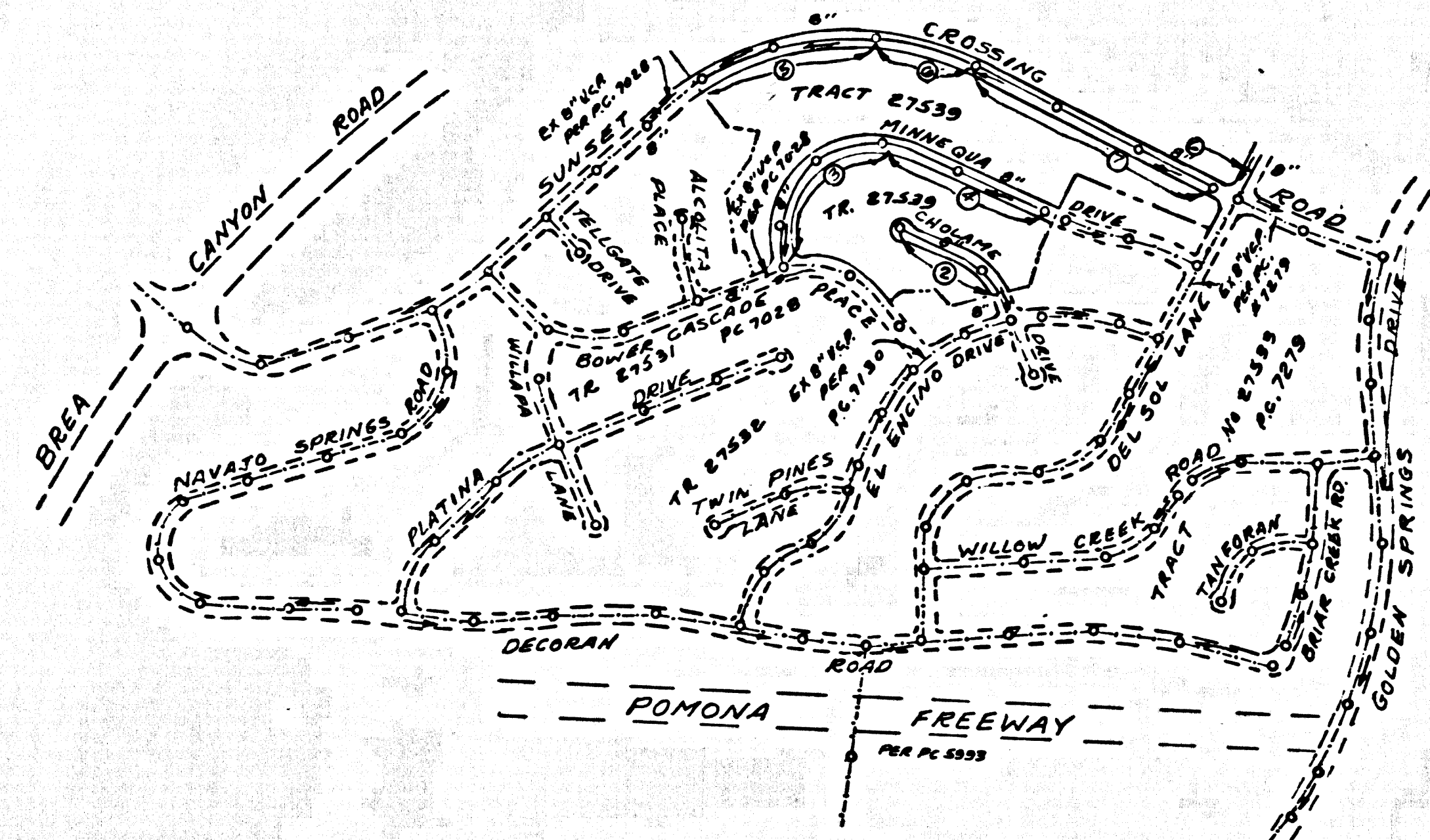


B.M. S.G. 2061 ELEV. 719.998
 L.A. COUNTY B.M. S.G. 2061 TAG IN CONCRETE WALK
 AROUND FOUNTAIN 6" EAST OF WEST EDGE
 2 7/8' EASTERLY AND 161' SOUTHERLY
 OF THE E 1/4 SECTION OF BREA CANYON
 ROAD AND DIAMOND BAR BLVD.
 OTTERBEIN QUAD. 19-55



TRACT NO. 27539 PC 7384
 INDEX MAP
 SCALE 1"=600'

REVISION
 CHANGE 6" H.L. TO 4" H.L.
 APPROVED: *[Signature]*
 CHIEF ENGINEER
 OFFICE OF THE COUNTY ENGINEER

ISSUE NO HOUSE
 CONNECTION PERMITS
 UNTIL PC 7028, 7130, 7279
 HAVE BEEN ACCEPTED

DOUBLE SCALE
 SAN DIMAS BLDG. DIST. NO. 10

- NOTE:
- PROVIDE STAKES ON THE PROPERTY LINE OR PROPERTY LINES PRODUCED AT RIGHT ANGLES TO THE SEWER LINE AT THE CENTER LINE OF EACH MANHOLE.
 - NO REPRESENTATIVE OF THE COUNTY ENGINEER WILL SURVEY OR LAY OUT ANY PORTION OF THE WORK.
 - THE PRIVATE ENGINEER SHALL FURNISH THE COUNTY ENGINEER WITH GRADE SHEETS AND STATIONING FOR ALL HOUSE LATERALS AND Y BRANCHES AND SHALL PROVIDE STAKES FOR THEM AT THEIR PROPER LOCATIONS WITH STATIONING PLAINLY MARKED. ALL HOUSE LATERALS SHALL BE CONSTRUCTED IN A STRAIGHT ALIGNMENT AT RIGHT ANGLES FROM THE MAIN LINE SEWER EXCEPT AS SHOWN ON THE PLANS. HOUSE LATERALS FROM CHIMNEYS SHALL NOT HAVE AN ANGLE OF LESS THAN 45° WITH THE MAIN LINE SEWER. ANY CHANGE IN ALIGNMENT SHALL BE REQUESTED IN WRITING BY THE PRIVATE ENGINEER.
 - THE PRIVATE ENGINEER SHALL FURNISH THE HOUSE LATERAL DEPTH AT THE PROPERTY LINE BELOW THE TOP OF CURB ELEVATION FOR EACH HOUSE LATERAL ON THE GRADE SHEET.
 - NO REVISIONS SHALL BE MADE IN THESE PLANS WITHOUT THE APPROVAL OF THE COUNTY ENGINEER.
 - THE CONTRACTOR SHALL NOTIFY THE CONSTRUCTION DIVISION BY TELEPHONE, MADISON 9-4747, EXT. 8158, AT LEAST TWENTY-FOUR HOURS BEFORE STARTING ANY WORK UNDER THIS CONTRACT.
 - MANHOLES SHALL BE BRICK SEWER STRUCTURES PER S-5 PRECAST CONCRETE MANHOLES PER S-6 OR S-6-G MAY BE USED AS AN ALTERNATE IN LOCATIONS APPROVED BY THE COUNTY ENGINEER.
 - USE STANDARD MANHOLE FRAMES AND COVERS, S-18.
 - MANHOLE TOPS IN UNIMPROVED RIGHTS-OF-WAY TO BE SIX INCHES ABOVE FINISHED GRADE.
 - USE EXTRA STRENGTH PIPE. ALL PIPE IS STANDARD DEPTH EXCEPT AS NOTED.
 - USE MECHANICAL COMPRESSION JOINTS FOR ALL V.C.P. JOINTS PER SPEC., SECS. 36 & 48 & 49.

- IF A POWER POLE IS WITHIN THREE FEET OF THE SEWER, THE SEWER SHALL BE ENCASED, PER S-28 - CASE III, TWO FEET ON EITHER SIDE FROM THE POINT OF INTERFERENCE.
- IF DURING THE COURSE OF CONSTRUCTION IT IS DETERMINED THAT THERE IS LESS THAN FOUR FEET OF COVER OVER THE TOP OF A MAIN LINE OR HOUSE LATERAL V.C.P. SEWER WHICH IS NOT INDICATED ON THE PLANS, THE PIPE SHALL BE ENCASED PER S-28 - CASE III, UNLESS OTHERWISE APPROVED BY THE COUNTY ENGINEER.
- HOUSE LATERALS TO BE CONSTRUCTED WITH INVERTS AT PROPERTY LINE... 6" ... FEET BELOW CURB GRADE.
- RESURFACE ALL TRENCHES WITHIN PAVED AREAS TO MEET L.A. COUNTY ROAD DEPT. OR CALIFORNIA STATE HIGHWAY REQUIREMENTS IN ACCORDANCE WITH PERMITS.
- FOR ALLOWABLE LEAKAGE TEST USE FORMULA NO. 1... SPEC., SEC. 54.
- CONSTRUCTION IN FULL AREAS UNACCEPTABLE CERTIFICATION OR CONSTRUCTION TEST RESULTS SHALL BE SUBMITTED TO THE CONSTRUCTION DIVISION. CONNECTION TESTS ARE TO BE MADE IN ACCORDANCE WITH A.B.T.M. STANDARD METHOD OF TEST D-39 - SET.
- NO CONSTRUCTION IS PERMITTED IN FILLED AREAS WHERE THE RELATIVE DENSITY OF COMPACTION IS LESS THAN 80%.
- IF THE RELATIVE DENSITY OF COMPACTION IS LESS THAN 80% ALL MAIN LINES AND HOUSE LATERALS SHALL BE CABLED PER S-23 OR HAVE A SPECIAL DASH COURSE PER S-21. CASE III SPECIAL MANHOLE DEPTH S-18 ARE REQUIRED.
- IF THE RELATIVE DENSITY OF COMPACTION IS 80% OR GREATER, THE SPECIAL PROVISIONS IN (C) ARE NOT REQUIRED.

ALL STATE AND LOCAL TRENCH SAFETY ORDERS WILL BE RIGIDLY ENFORCED.

COLLECT CHARGES AS INDICATED
D. R. Olean 8-26-68

NO CONNECTIONS FOR THE DISPOSAL OF INDUSTRIAL WASTES SHALL BE MADE TO SEWERS SHOWN ON THESE DRAWINGS WITHOUT WRITTEN PERMISSION FROM THE CHIEF ENGINEER AND GENERAL MANAGER OF THE COUNTY SANITATION DISTRICTS.

PROFILE ALIGNMENT AND GRADE OF
 SANITARY SEWERS PAGE 1
 P.C. 7384

TRACT NO. 27539
 PRIVATE CONTRACT NO. 7384

W.S. 39
 4 SHEETS, 7 PAGES
 SCALE: HORIZ. 1"=40' VERT. 1"=4'
 APRIL 1965
 38072

PREPARED IN THE OFFICES OF
 T. STATE ENGINEERING CO.
 615 SOUTH RAYMOND AVENUE
 -LESTON, CALIFORNIA
 PHONE ARE. 1-471-3110
 REG. C. E. NO. 12507

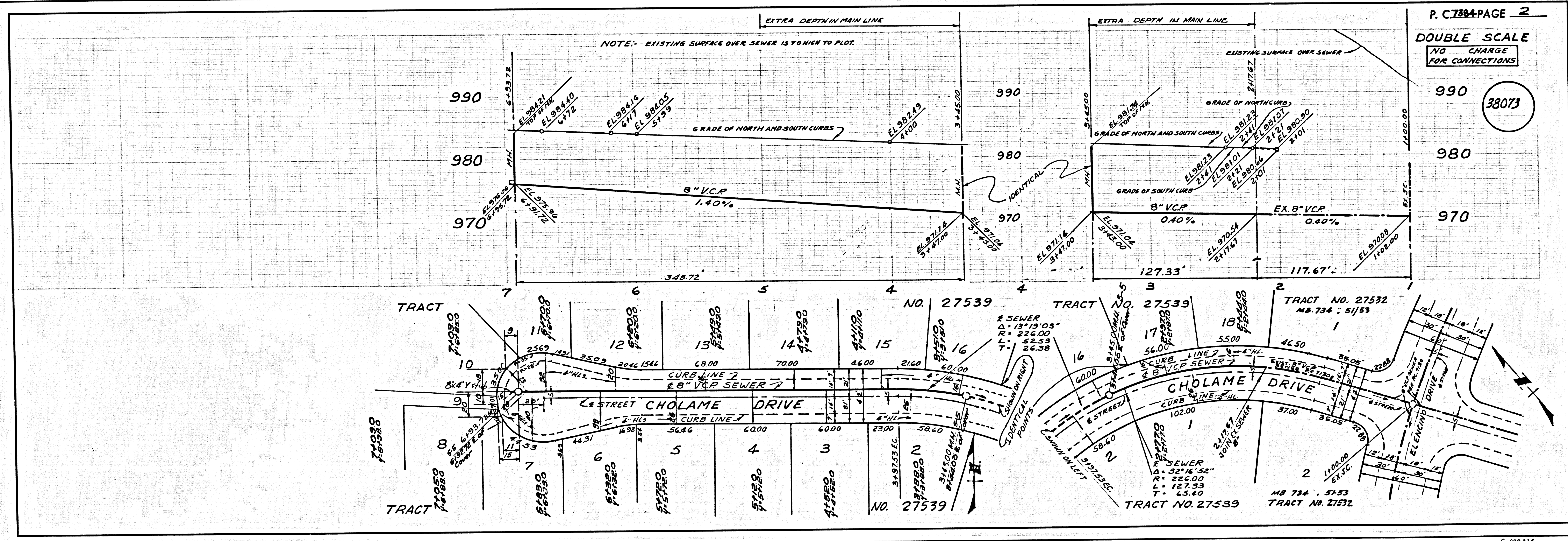
FOR LEGEND SEE PLAN NO. S-1

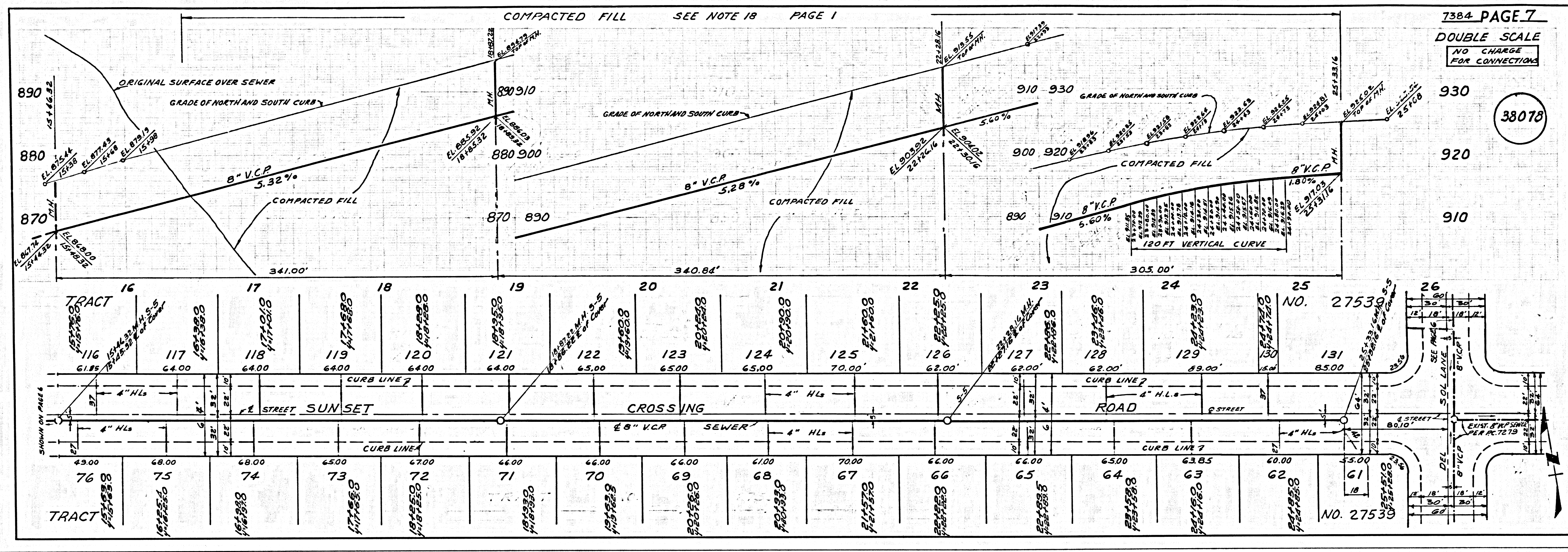
COUNTY OF LOS ANGELES, CALIFORNIA
 JOHN A. LAMBE, COUNTY ENGINEER
 J. D. PARKHURST, CHIEF ENGINEER

APPROVED BY: *[Signature]* ASSISTANT SANITATION ENGINEER
 APPROVED BY: *[Signature]* CHIEF ENGINEER

SUBMITTED BY: *[Signature]*
 CHECKED BY: *[Signature]* 1-27-65
 REG. C. E. NO. 12843

J. N. 0365.85





487 39

SEATS ON TRACT

PAGE