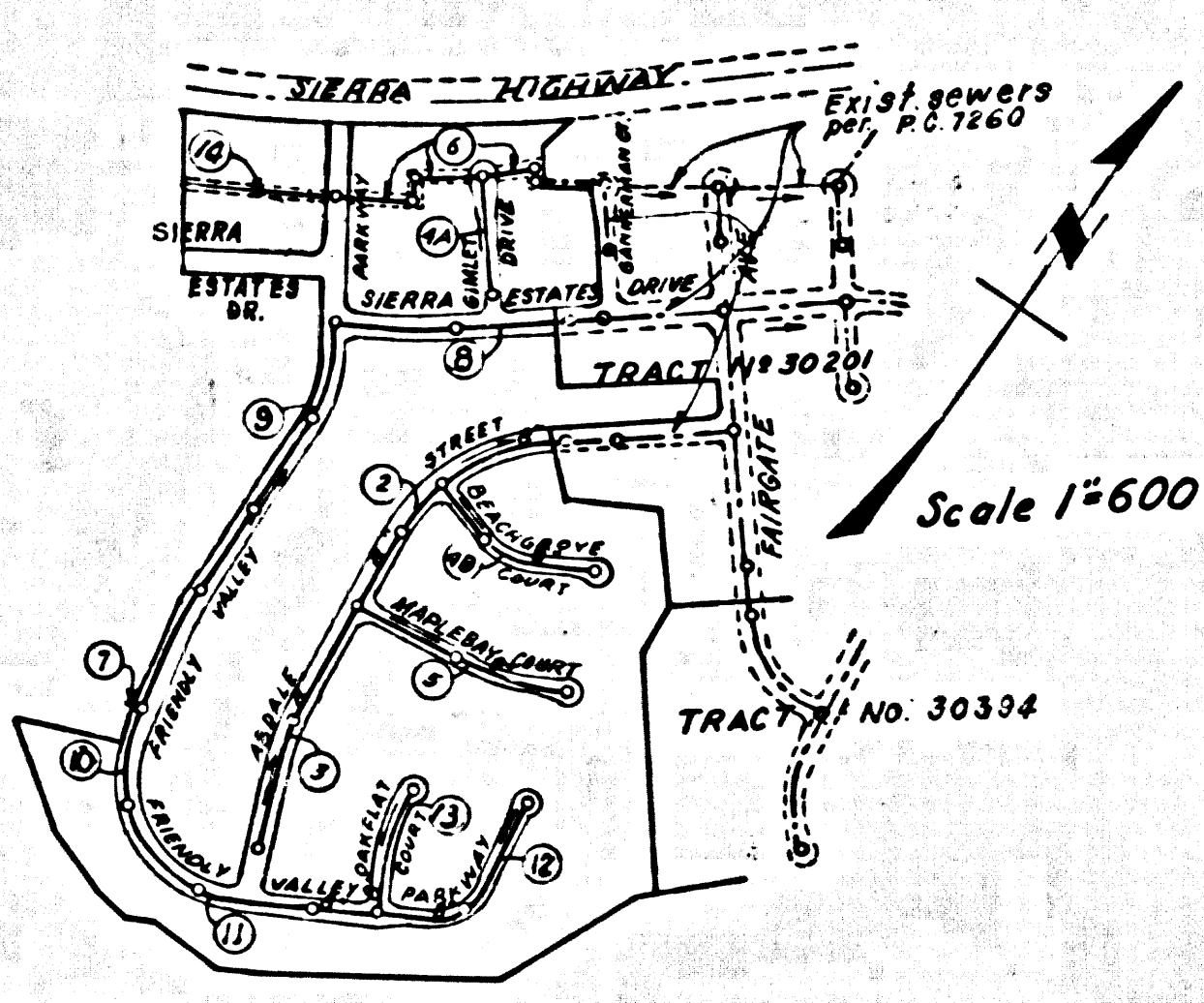


B.M. S.L. 942 ELEV. 1423.098
 U.S.C. & G.S. Mon. stamped E 486-1955 in N1/4
 end of W1/4 about S.P.R.R. Box Culvert
 444.22' under Sierra Hwy Bridge .06 mi.
 S1/4 of Soledad Cyn. Rd. S1/4 of N1/4 of N1/4
 S 2 1/2 E1/4 of Sierra Hwy.
 NEWHALL QUAD. 19 58



Numbers in Circles indicate page numbers

INDEX MAP
 P.C. 7395
 TRACT No. 30395

LOTS 1, 2, 3 and
 LOTS 67 THRU 72 INCLUSIVE TO BE
 SERVED FROM P.C. 7260

NO CONNECTIONS IN THE DISPOSAL OF
 INDUSTRIAL WASTES SHALL BE MADE TO
 SEWERS SHOWN ON THESE DRAWINGS
 WITHOUT WRITTEN PERMISSION FROM THE
 CHIEF ENGINEER AND GENERAL MANAGER
 OF THE COUNTY SANITATION DISTRICT.

Any connection to the sewage system of County Sanitation District, provided directly or indirectly by the sewer shown on these plans, shall be considered a temporary connection until all area sewered is annexed to said district, at which time the connection shall become permanent. If for any reason the annexation to the district of any area sewered hereunder is not completed, the property not in the district will be required to disconnect unless a contract is entered into with the district providing for the disposal of sewage from the area.

DOUBLE SCALE
 NEWHALL BLDG. DIST. NO. 82

PROFILE ALIGNMENT AND GRADE OF
 SANITARY SEWERS PAGE 1
 CONSTRUCTED IN
 TRACT NO. 30395

PRIVATE CONTRACT NO. 7395

W.S. 62

7 SHEETS, 14 PAGES
 SCALE: VERT. 1"=4'
 HORIZ. 1"=40'
 JANUARY, 1966

38021

PREPARED IN THE OFFICES OF
 PRECISION INCORPORATED

By: *H.L. Carlat*
 REG. C. E. NO. 8448

FOR LEGEND SEE PLAN NO. S-1

- NOTES:
1. PROVIDE STAKES ON THE PROPERTY LINE OR PROPERTY LINES PRODUCED AT RIGHT ANGLES TO THE SEWER LINE AT THE CENTER LINE OF EACH MANHOLE.
 2. NO REPRESENTATIVE OF THE COUNTY ENGINEER WILL SURVEY OR LAY OUT ANY PORTION OF THE WORK.
 3. THE PRIVATE ENGINEER SHALL FURNISH THE COUNTY ENGINEER WITH GRADE SHEETS AND STATIONING FOR ALL HOUSE LATERALS AND Y BRANCHES AND SHALL PROVIDE STAKES FOR THEM AT THEIR PROPER LOCATIONS WITH STATIONING PLAINLY MARKED. ALL HOUSE LATERALS SHALL BE CONSTRUCTED IN A STRAIGHT ALIGNMENT AT RIGHT ANGLES FROM THE MAIN LINE SEWER EXCEPT AS SHOWN ON THE PLANS.
 4. THE PRIVATE ENGINEER SHALL FURNISH THE HOUSE LATERAL DEPTH AT THE PROPERTY LINE BELOW THE TOP OF CURB ELEVATION FOR EACH HOUSE LATERAL ON THE GRADE SHEET.
 5. NO REVISIONS SHALL BE MADE IN THESE PLANS WITHOUT THE APPROVAL OF THE COUNTY ENGINEER.
 6. THE CONTRACTOR SHALL NOTIFY THE CONSTRUCTION DIVISION BY TELEPHONE, MADISON 9-4747, EXT. 8158, AT LEAST TWENTY-FOUR HOURS BEFORE STARTING ANY WORK UNDER THIS CONTRACT.
 7. MANHOLES SHALL BE BRICK SEWER STRUCTURES PER S-8 PRECAST CONCRETE MANHOLES PER S-8 OR S-8 MAY BE USED AS AN ALTERNATE IN LOCATIONS APPROVED BY THE COUNTY ENGINEER.
 8. USE STANDARD MANHOLE FRAMES AND COVERS, S-18 EXCEPT AS NOTED.
 9. MANHOLE TOPS IN UNIMPROVED RIGHTS-OF-WAY TO BE SIX INCHES ABOVE FINISHED GRADE.
 10. USE EXTRA STRENGTH PIPE. ALL PIPE IS STANDARD DEPTH EXCEPT AS NOTED.
 11. USE MECHANICAL COMPRESSION JOINTS FOR ALL V.C.P. JOINTS PER SPECS. SECT. 34 & 41, 8-48
 12. IF A POWER POLE IS WITHIN THREE FEET OF THE SEWER, THE SEWER SHALL BE ENCASED, PER S-23, TWO FEET ON EITHER SIDE FROM THE POINT OF INTERFERENCE.
 13. IF DURING THE COURSE OF CONSTRUCTION IT IS DETERMINED THAT THERE IS LESS THAN FOUR FEET OF COVER OVER THE TOP OF A MAIN LINE OR HOUSE LATERAL V.C.P. SEWER WHICH IS NOT INDICATED ON THE PLANS, THE PIPE SHALL BE ENCASED PER S-23 UNLESS OTHERWISE APPROVED BY THE COUNTY ENGINEER.
 14. HOUSE LATERALS TO BE CONSTRUCTED WITH INVERTS AT PROPERTY LINE, . . . FEET BELOW CURB GRADE.
 15. BRUSHFACE ALL TIERONES WITHIN PAVED AREAS TO MEET L.A. COUNTY ROAD DEPT. REQUIREMENTS IN ACCORDANCE WITH PERMITS.
 16. FOR ALLOWABLE LEAKAGE TEST USE FORMULA NO. SPECS. SEC. 54.
 17. IF NO CONSTRUCTION WILL BE PERMITTED IN WELLED AREAS UNLESS ACCEPTABLE CERTIFICATION IS SUBMITTED TO THE CONSTRUCTION DIVISION OF THE COUNTY ENGINEERS DEPT., THAT RELATIVE COMPACTNESS IS GREATER THAN 90%.
 18. IF COMPACTNESS IS LESS THAN 90% THE SEWER MUST BE GRADED AS SHOWN ON THE PLANS PER S-28 AND SPECIAL M.M. BASES PROVIDED PER S-14.
 19. IF COMPACTNESS IS GREATER THAN 90% GRADING IS NOT REQUIRED.
 20. UPON ACCEPTABLE CERTIFICATION TO THE CONSTRUCTION DIVISION OF THE COUNTY ENGINEER THAT RELATIVE COMPACTNESS IS GREATER THAN 90%, BASES PER S-14 WILL NOT BE REQUIRED.
 21. ALL STATE AND LOCAL TREES SAFETY ORDERS WILL BE RIGIDLY ENFORCED.
 22. ON GRADES OF 90% OR MORE, CONSTRUCT ANCHOR BLOCKS PER S-24.
 23. LENGTHS OF PIPE NOT MORE THAN 35 FT. IN LENGTH SHALL BE USED ON ALL CURVES HAVING A RADIUS OF LESS THAN 150 FT.

GRADES TO WHICH THIS IMPROVEMENT IS TO BE CONSTRUCTED ARE SHOWN ON PLANS AND PROFILES. GRADE POINTS FOR TOP OF CURBS, CENTER LINE OF STREETS, OR CENTER LINE OF ALLEYS ARE SHOWN BY CIRCLES ON PROFILES. AT ALL POINTS BETWEEN DESIGNATED POINTS THE GRADE SHALL BE ESTABLISHED SO AS TO CONFORM TO A STRAIGHT LINE DRAWN BETWEEN SAID DESIGNATED POINTS. ELEVATIONS ARE IN FEET ABOVE U.S.C. & G.S. SEA LEVEL DATUM OF 1929.

THIS DRAWING AND THE DATA HEREON ARE HEREBY MADE A PART OF THE SPECIFICATIONS. ALL REVISIONS BEFORE WORK CAN BE STARTED. THE CONTRACTOR MUST OBTAIN A PERMIT TO EXCAVATE IN COUNTY STREETS FROM THE L.A. COUNTY ROAD DEPT., DISTRICT OFFICE NO. AND PAY A FEE TO THE COUNTY ENGINEER, ROOM 380, COUNTY ENGINEERING BUILDING, 108 WEST SECOND STREET, SANTEFE, CALIF. REGIONAL OFFICE, SUFFICIENT TO COVER THE COST OF CONSTRUCTION INSPECTION AND RECORD PLANS.

APPROVAL OF THIS PLAN BY THE COUNTY OF LOS ANGELES DOES NOT CONSTITUTE A REPRESENTATION AS TO THE ACCURACY OF THE LOCATION OF OR THE EXISTENCE OR NON-EXISTENCE OF ANY UNDERGROUND UTILITY PIPE, OR STRUCTURE WITHIN THE LIMITS OF THIS PROJECT. THIS NOTE APPLIES TO ALL PAGES.

IF WORK IS TO BE DONE ON A STATE HIGHWAY, A PERMIT MUST BE OBTAINED FROM THE STATE OF CALIFORNIA, DIVISION OF HIGHWAYS, 726 SOUTH SPRING STREET, LOS ANGELES, CALIFORNIA.

COUNTY OF LOS ANGELES, CALIFORNIA
 JOHN A. LAMBIE, COUNTY ENGINEER
 APPROVED BY: *H.L. Carlat*
 ASSISTANT SANITATION ENGINEER

J. D. PARKHURST, CHIEF ENGINEER
 CO. SANITATION DISTRICT NO. 82
 APPROVED BY: *H.L. Carlat*
 CHIEF ENGINEER

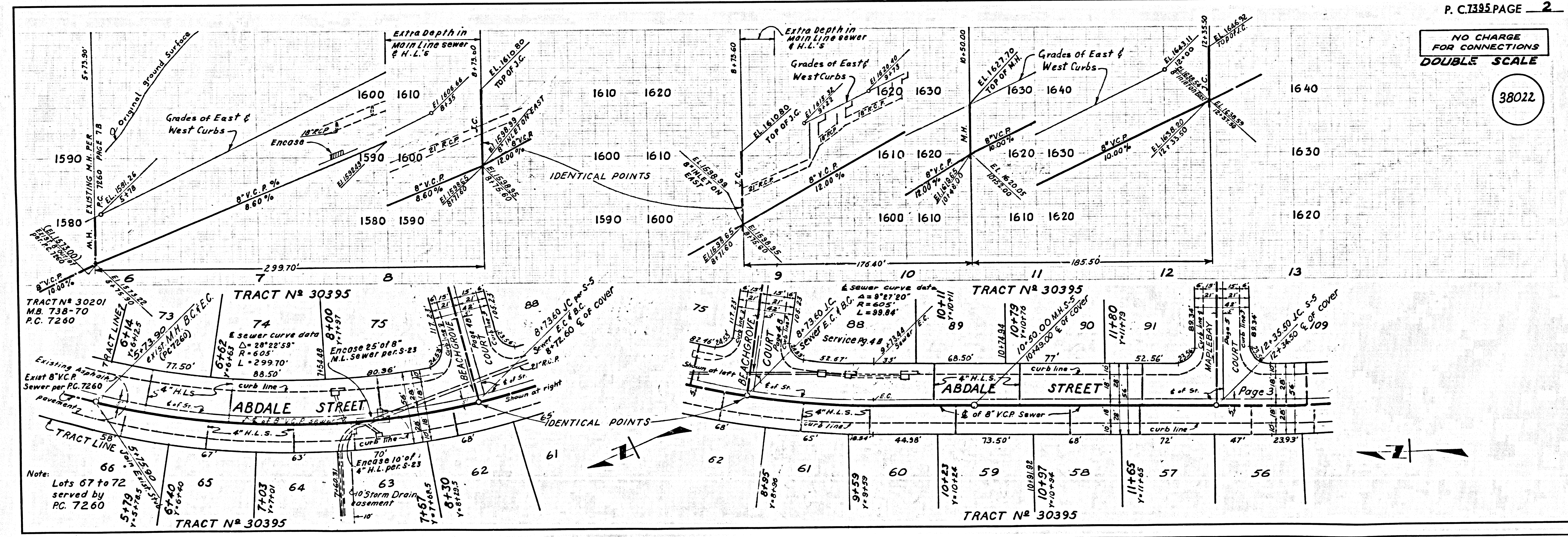
COLLECT CHARGES
 AS INDICATED
Allen Adams

NOTICE TO CONTRACTORS
 The existence and location of any underground utility pipes or structures shown on these plans are obtained by a search of the available records. To the best of my knowledge there are no existing utilities except as shown on these plans. The contractor is required to take due precautionary measures to protect the utility lines not of record not shown on these plans.

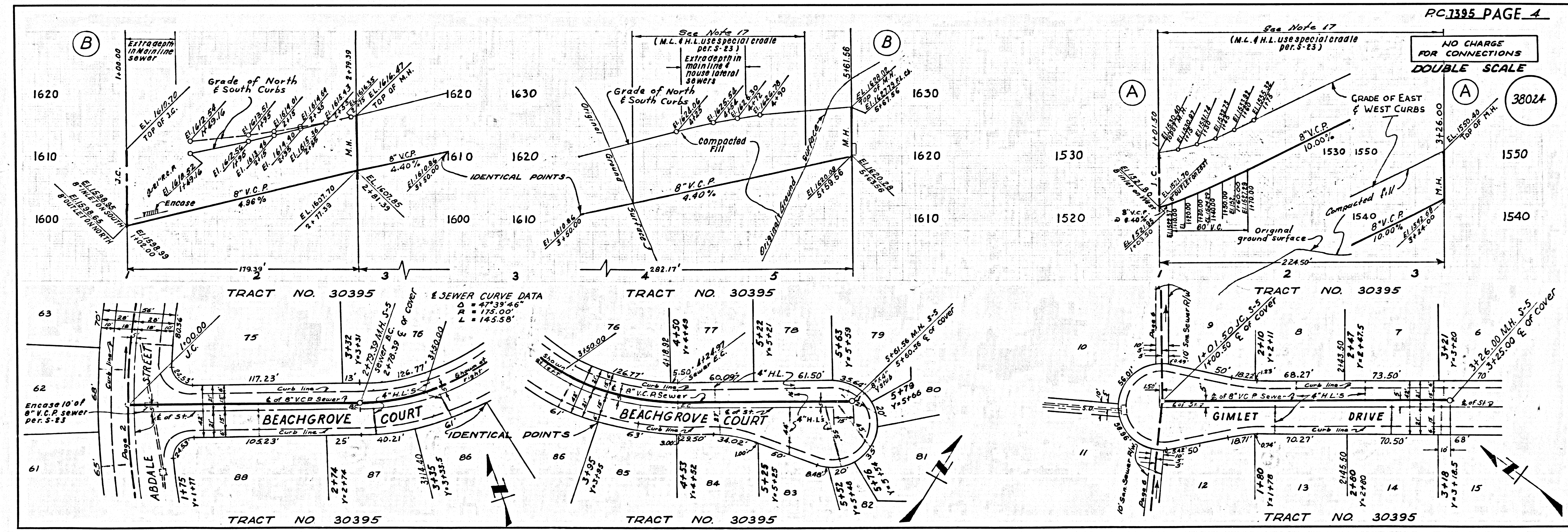
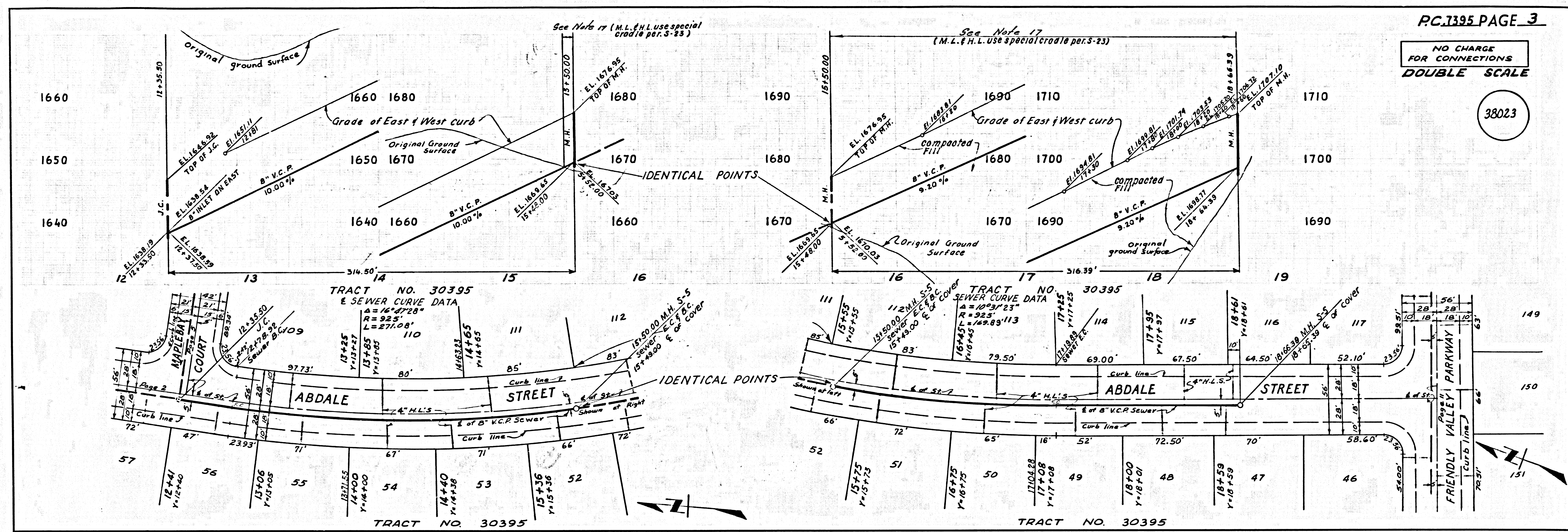
Checked by: *Keith Schep* 2/1/66
 REG. C. E. NO. 13406

H.L. Carlat
 G.E. Carlat R.C.E. No. 8448

J.N. 0365.94

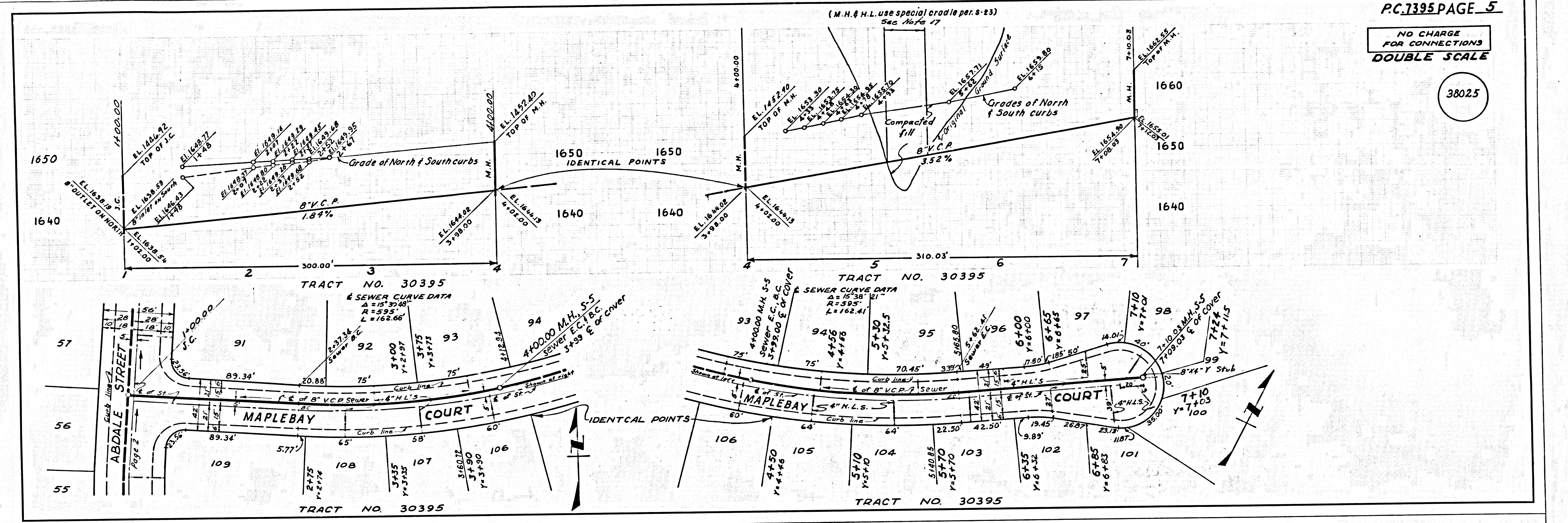


P.C. 7395 PAGE 2
 NO CHARGE FOR CONNECTIONS
 DOUBLE SCALE
 38022



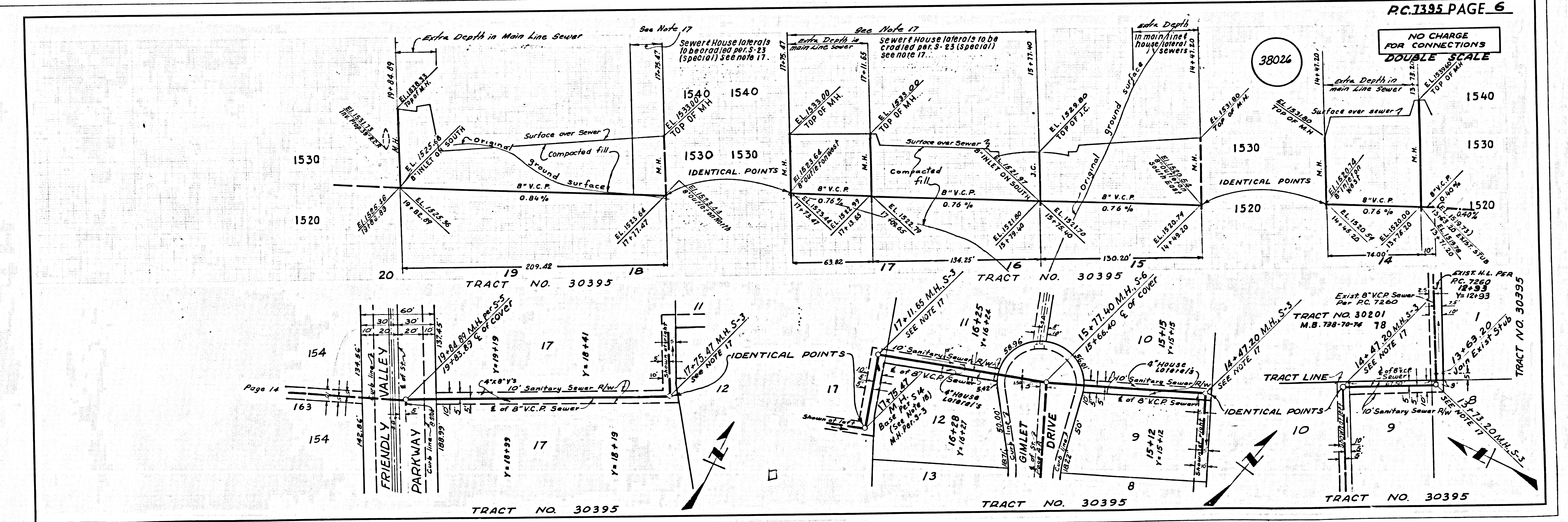
NO CHARGE FOR CONNECTIONS
DOUBLE SCALE

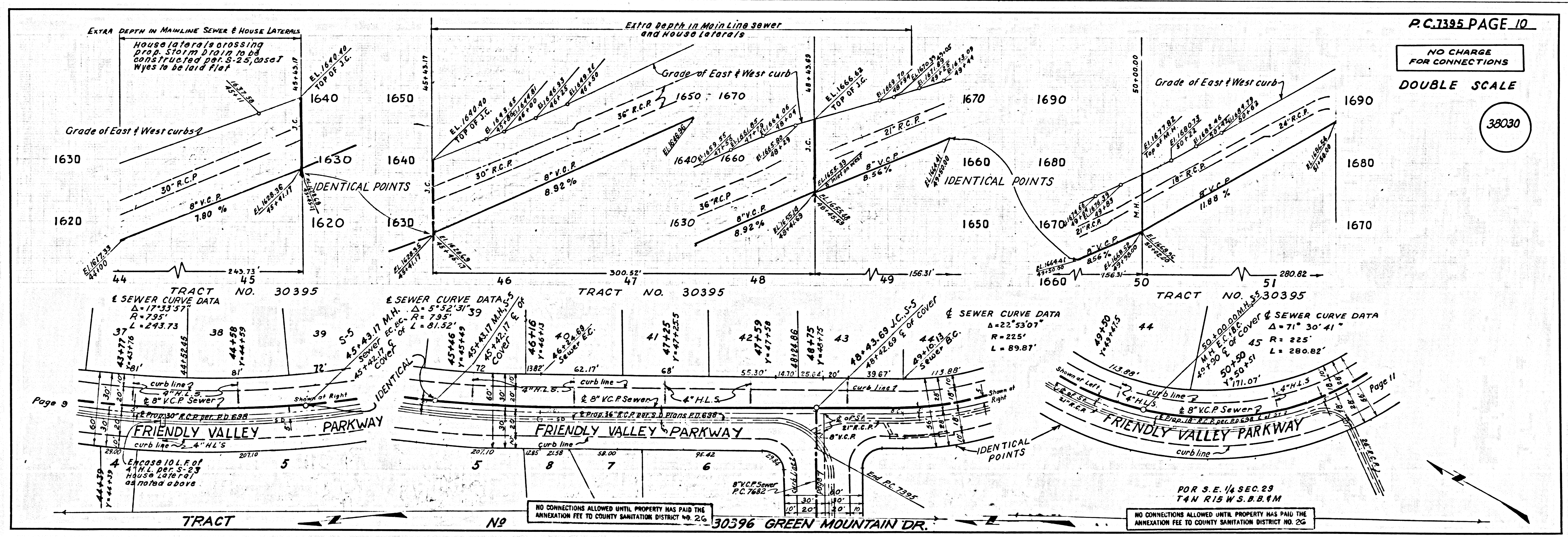
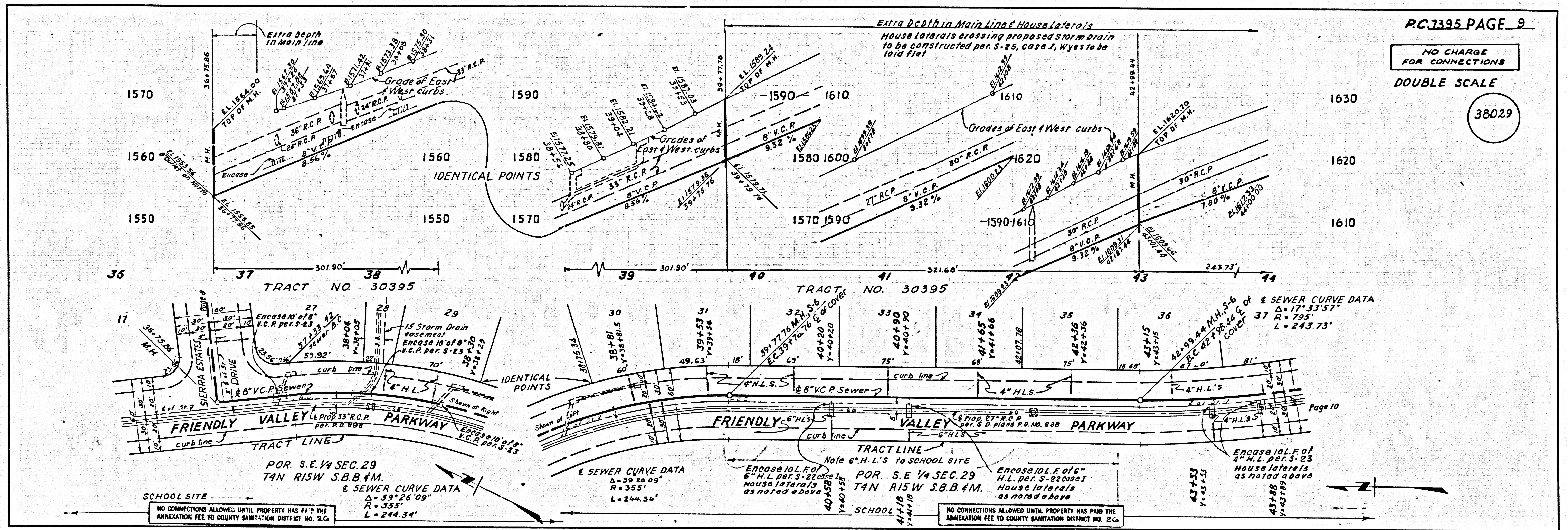
38025



NO CHARGE FOR CONNECTIONS
DOUBLE SCALE

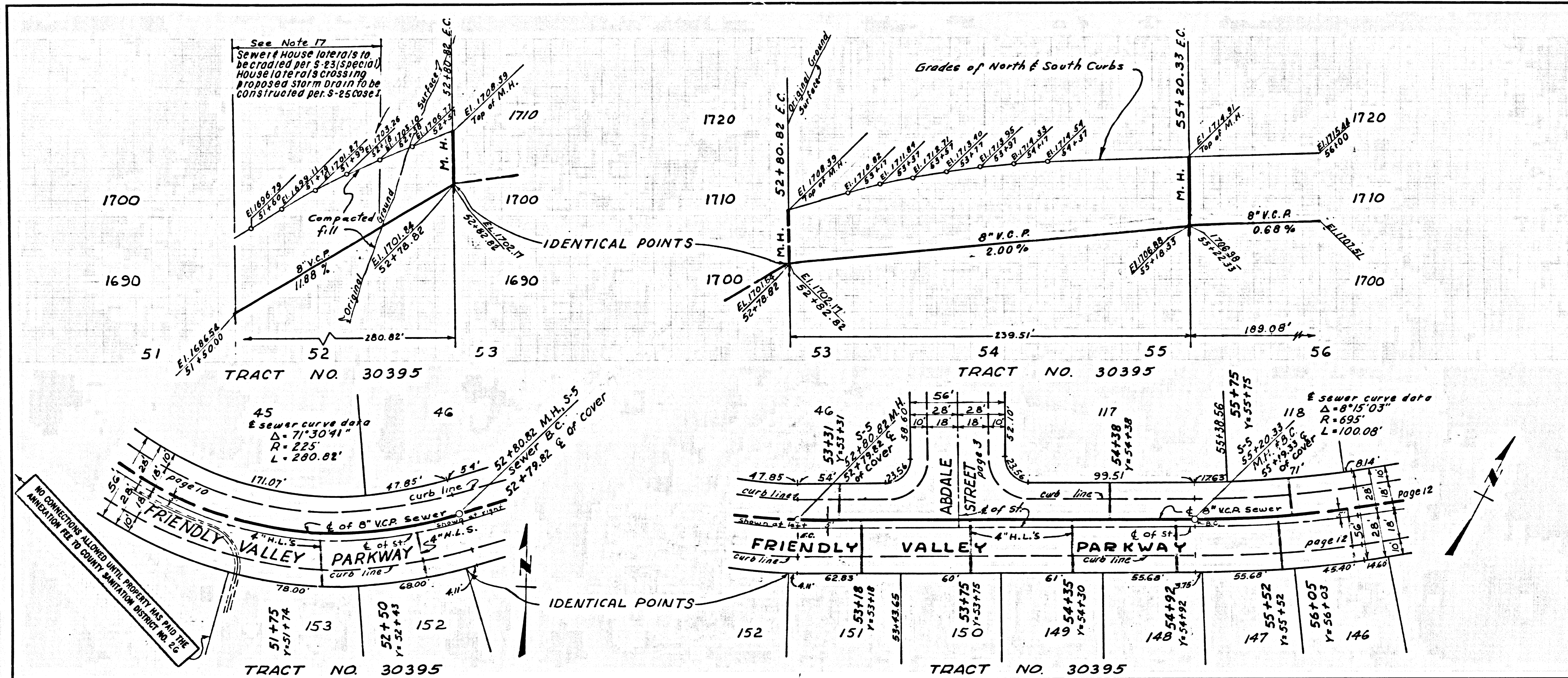
38026





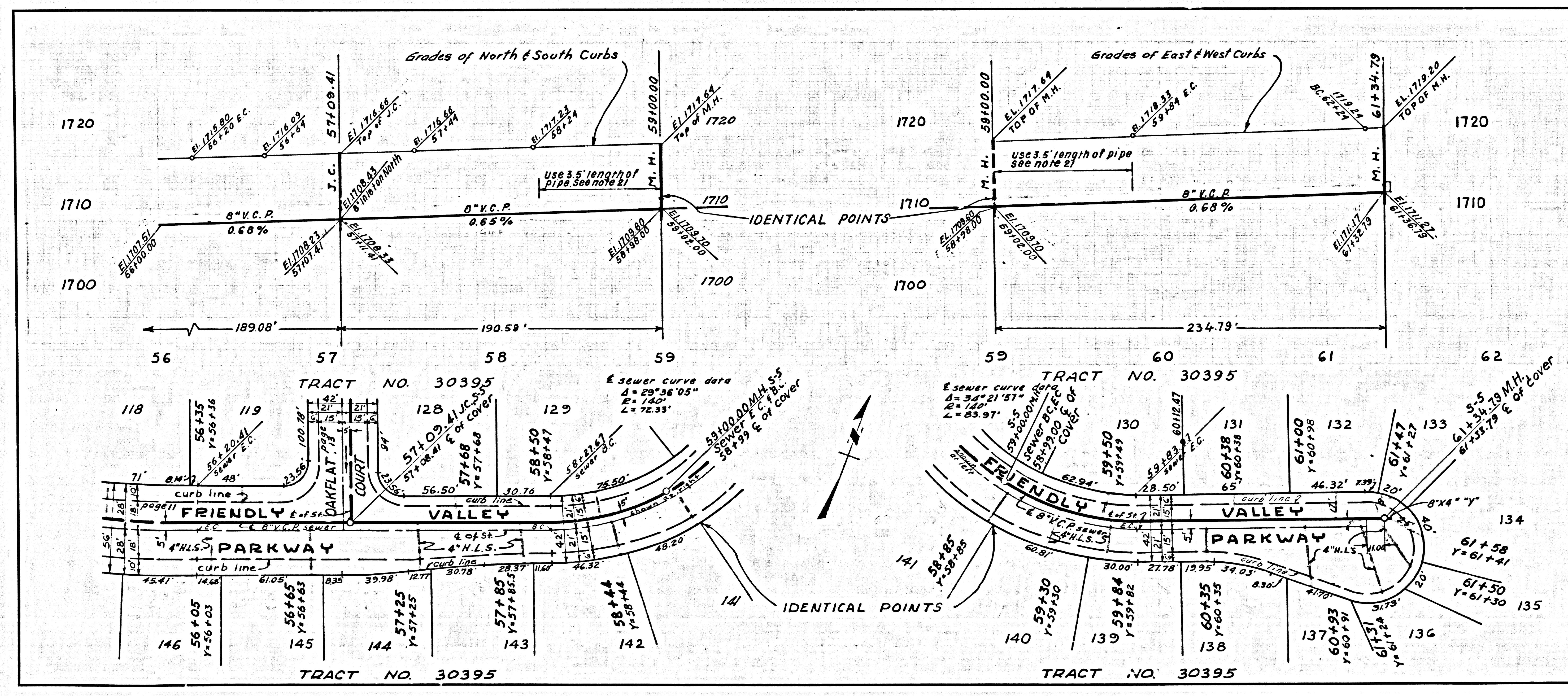
NO CHARGE FOR CONNECTIONS
DOUBLE SCALE

38031



NO CHARGE FOR CONNECTIONS
DOUBLE SCALE

38032



RAE 17519 L.A. COUNTY SEWER SHEET NO. 2 80. CAL. BLUEPRINT CO.

