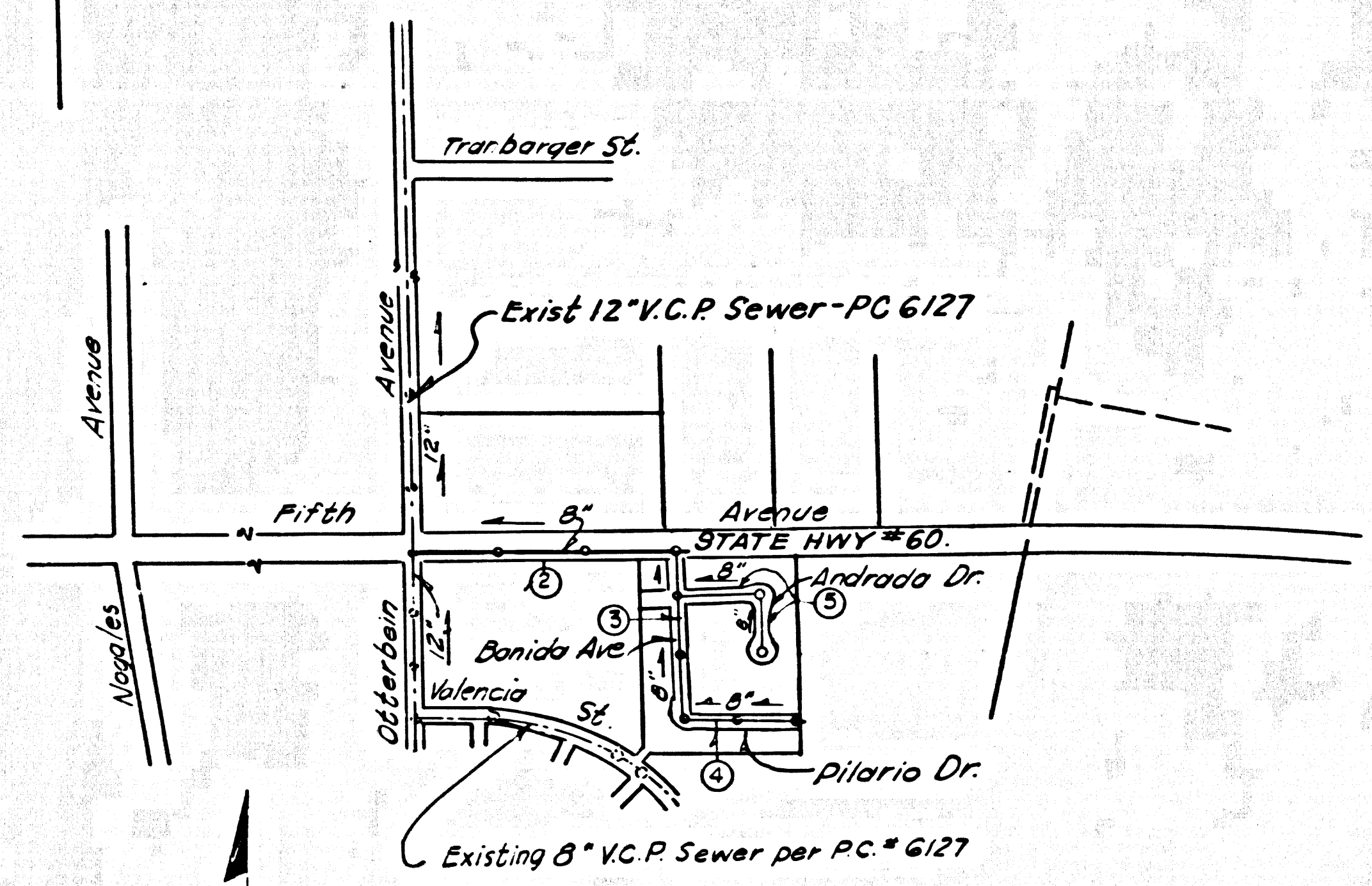


B.M. B.G. 1293 ELEV. 512.810  
 L&BN W. end of 1st step to porch  
 of Hse No. 19208 5th Ave., 55 ft.  
 S. C/L + 115 ft. E. C/L Otterbein Ave.  
 OTTERBEIN QUAD. 1965.



INDEX MAP  
 TRACT NO. 30386  
 P.C. 7398  
 1" = 600'

**REVISION**  
 ADDED 16" 6-INCH DIAMETER  
 H.L.'s ON PAGE 2, DUE TO STATE  
 HIGHWAY REQUIREMENT.  
 APPROVED: JOHN A. LAMBIE  
 COUNTY ENGINEER  
 Date: 12-24-66  
 OFFICE OF THE COUNTY ENGINEER

**LA PUENTE BLDG. DIST. NO. 2**

- NOTES:**
1. PROVIDE STAKES ON THE PROPERTY LINE OR PROPERTY LINES PRODUCED AT RIGHT ANGLES TO THE SEWER LINE AT THE CENTER LINE OF EACH MANHOLE.
  2. NO REPRESENTATIVE OF THE COUNTY ENGINEER WILL SURVEY OR LAY OUT ANY PORTION OF THE WORK.
  3. THE PRIVATE ENGINEER SHALL FURNISH THE COUNTY ENGINEER WITH GRADE SHEETS AND STATIONING FOR ALL HOUSE LATERALS AND Y BRANCHES AND SHALL PROVIDE STAKES FOR THEM AT THEIR PROPER LOCATIONS WITH STATIONING PLAINLY MARKED. ALL HOUSE LATERALS SHALL BE CONSTRUCTED IN A STRAIGHT ALIGNMENT AT RIGHT ANGLES FROM THE MAIN LINE SEWER EXCEPT AS SHOWN ON THE PLANS. MINIMUM CLEARANCE FROM CURBSIDE SHALL HAVE AN ANGLE OF LESS THAN 45° WITH THE MAIN LINE SEWER. ANY CHANGE IN ALIGNMENT SHALL BE REQUESTED BY WRITING BY THE PRIVATE ENGINEER.
  4. THE PRIVATE ENGINEER SHALL FURNISH THE HOUSE LATERAL DEPTH AT THE PROPERTY LINE BELOW THE TOP OF CURB ELEVATION FOR EACH HOUSE LATERAL ON THE GRADE SHEET.
  5. NO REVISIONS SHALL BE MADE IN THESE PLANS WITHOUT THE APPROVAL OF THE COUNTY ENGINEER.
  6. THE CONTRACTOR SHALL NOTIFY THE CONSTRUCTION DIVISION BY TELEPHONE, MADISON 9-4247, EXT. 81531, AT LEAST TWENTY-FOUR HOURS BEFORE STARTING ANY WORK UNDER THIS CONTRACT.
  7. MANHOLES SHALL BE BRICK SEWER STRUCTURES PER S. B. PRECAST CONCRETE MANHOLES PER S. B. OR S. G. MAY BE USED AS AN ALTERNATE IN LOCATIONS APPROVED BY THE COUNTY ENGINEER.
  8. USE STANDARD MANHOLE FRAMES AND COVERS, S. 18.
  9. MANHOLE TOPS IN UNIMPROVED RIGHTS-OF-WAY TO BE SIX INCHES ABOVE SURFACE OVER SEWER.
  10. USE EXTRA STRENGTH PER ALL PER S. STANDARD SPEC. EXCEPT AS NOTED.
  11. USE MECHANICAL COMPRESSION JOINTS FOR ALL V.C.P. JOINTS PER SPEC., SECS. 24, 46, & 49.
  12. IF A POWER POLE IS WITHIN THREE FEET OF THE SEWER, THE SEWER SHALL BE ENCASED, PER S. 23, TWO FEET ON EITHER SIDE FROM THE POINT OF INTERFERENCE.
  13. IF DURING THE COURSE OF CONSTRUCTION IT IS DETERMINED THAT THERE IS LESS THAN FOUR FEET OF COVER OVER THE TOP OF A MAIN LINE OR HOUSE LATERAL V.C.P. SEWER WHICH IS NOT INDICATED ON THE PLANS, THE PIPE SHALL BE ENCASED PER S. 23, UNLESS OTHERWISE APPROVED BY THE COUNTY ENGINEER.
  14. HOUSE LATERALS TO BE CONSTRUCTED WITH INVERTS AT PROPERTY LINE ... 6" ... FEET BELOW CURB GRADE EXCEPT AS NOTED.
  15. REINFORCE ALL TRENCHES WITH PAVED AREAS TO MEET L.A. COUNTY ROAD DEPT. OR CALIFORNIA STATE HIGHWAY REQUIREMENTS IN ACCORDANCE WITH PERMITS.
  16. FOR ALLOWABLE LEAKAGE TEST USE FORMULA NO. ... SPEC., SEC. 64.
  17. CONSTRUCTION IN FULL AREAS:
    - (a) AN ACCEPTABLE CERTIFICATION OF CONSTRUCTION TEST RESULTS SHALL BE SUBMITTED TO THE CONSTRUCTION DIVISION. CONSTRUCTION TESTS ARE TO BE MADE IN ACCORDANCE WITH A.S.T.M. STANDARD METHOD OF TEST, D 698 - 42 T.
    - (b) NO CONSTRUCTION IS TO BE PERMITTED IN FILLED AREAS WHERE THE RELATIVE DENSITY OF COMPACTION IS LESS THAN 90%.
    - (c) IF THE RELATIVE DENSITY OF COMPACTION IS LESS THAN 90% ALL MAIN LINES AND HOUSE LATERALS SHALL BE ENCASED PER S. 23 (SPECIAL) OR HAVE A SPECIAL BASE COURSE PER S. 23. SPECIAL MANHOLE BASES PER S. 14 ARE REQUIRED.
    - (d) IF THE RELATIVE DENSITY OF COMPACTION IS 90% OR GREATER THE SPECIAL PROVISIONS IN S. 23 ARE NOT REQUIRED.
  18. ALL STATE AND LOCAL TRENCH SAFETY ORDERS WILL BE RIGIDLY ENFORCED.

**COLLECT CHARGES AS INDICATED**  
 Approved: *Ronald W. Kinney* 2-16-66

NO CONNECTIONS FOR THE DISPOSAL OF INDUSTRIAL WASTES SHALL BE MADE TO SEWERS SHOWN ON THESE DRAWINGS WITHOUT WRITTEN PERMISSION FROM THE CHIEF ENGINEER AND GENERAL MANAGER OF THE COUNTY SANITATION DISTRICTS.

PROFILE ALIGNMENT AND GRADE OF **P.C. 7398**  
**SANITARY SEWERS** PAGE 1.  
 TO BE CONSTRUCTED IN

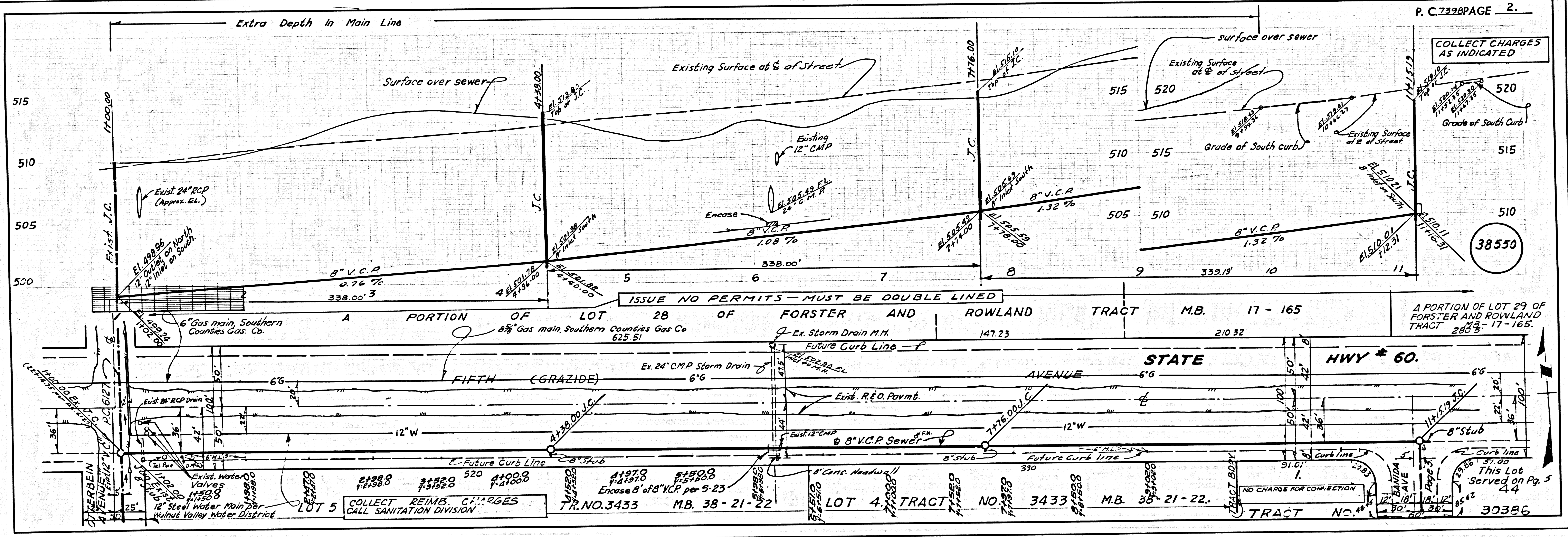
**TRACT NO. 30386**  
**PRIVATE CONTRACT NO. 7398**

W.S. 38  
 3 SHEETS, 5 PAGES  
 SCALE: VERT. 1" = 4' HORIZ. 1" = 40'  
 December, 1965  
 PREPARED IN THE OFFICES OF  
 TRI-STATE ENGINEERING CO.  
 615 SOUTH RAYMOND AVENUE  
 FULLERTON, CALIFORNIA  
 PHONE AREA 714 - 811-9510  
 BY: *Thomas J. ...*  
 REG. C. E. NO. 12827

FOR LEGEND SEE PLAN NO. S-1

**NOTE:**  
 GRADES TO WHICH THIS IMPROVEMENT IS TO BE CONSTRUCTED ARE SHOWN ON PLANS AND PROFILES. GRADE POINTS FOR TOP OF CURBS, CENTER LINE OF STREETS, OR CENTER LINE OF ALLEYS ARE SHOWN BY CIRCLES ON PROFILES AT ALL POINTS BETWEEN DESIGNATED POINTS. THE GRADE SHALL BE ESTABLISHED SO AS TO CONFORM TO A STRAIGHT LINE DRAWN BETWEEN SAID DESIGNATED POINTS. ELEVATIONS ARE IN FEET ABOVE U.S.C. & G.S. SEA LEVEL DATUM OF 1929.  
 THIS DRAWING AND THE DATA HEREON ARE HEREBY MADE A PART OF THE SPECIFICATIONS. AS REVISED.  
 BEFORE WORK CAN BE STARTED, THE CONTRACTOR MUST OBTAIN A PERMIT TO EXCAVATE IN COUNTY STREETS FROM THE L.A. COUNTY ROAD DEPT., DISTRICT OFFICE AND PAY A FEE TO THE COUNTY ENGINEER, ROOM 200, COUNTY ENGINEERING BUILDING, 120 WEST SECOND STREET, SAN DIMAS, CALIFORNIA. THE CONTRACTOR SHALL BE RESPONSIBLE FOR THE COST OF CONSTRUCTION INSPECTION AND RECORD PLANS.  
 APPROVAL OF THIS PLAN BY THE COUNTY OF LOS ANGELES DOES NOT CONSTITUTE A REPRESENTATION AS TO THE ACCURACY OF THE LOCATION OF OR THE EXISTENCE OR NON-EXISTENCE OF ANY UNDERGROUND UTILITY PIPE, OR STRUCTURE WITHIN THE LIMITS OF THIS PROJECT. THIS NOTE APPLIES TO ALL PAGES.  
 IF WORK IS TO BE DONE IN A STATE HIGHWAY, A PERMIT MUST BE OBTAINED FROM THE STATE OF CALIFORNIA, DIVISION OF HIGHWAYS, 120 SOUTH SPRING STREET, LOS ANGELES, CALIFORNIA.

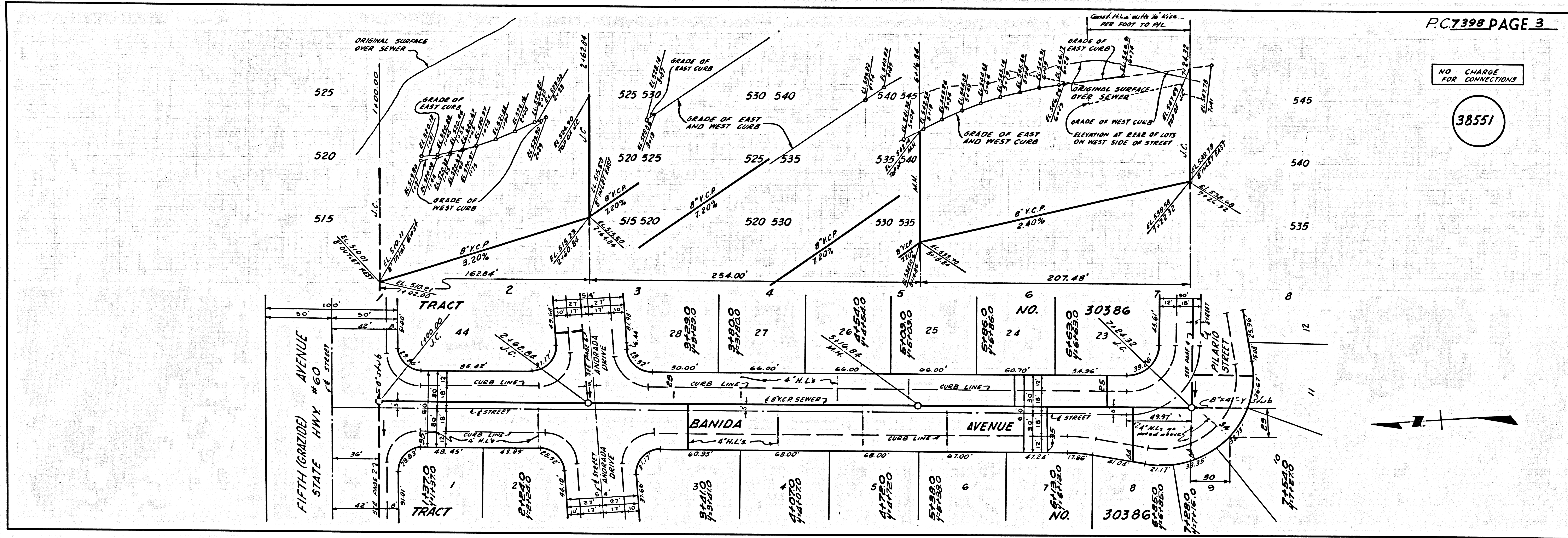
COUNTY OF LOS ANGELES, CALIFORNIA  
 JOHN A. LAMBIE, COUNTY ENGINEER J. D. PARKHURST, CHIEF ENGINEER  
 APPROVED BY: *[Signature]* APPROVED BY: *[Signature]*  
 ASSISTANT SANITATION ENGINEER OFFICE ENGINEER  
 SUBMITTED BY: *[Signature]*  
 FOR SAN DIMAS REGIONAL ENGINEER  
 CHECKED BY: *[Signature]* 2-17-66  
 REG. C. E. NO. 10243  
 J. N. 0365.95





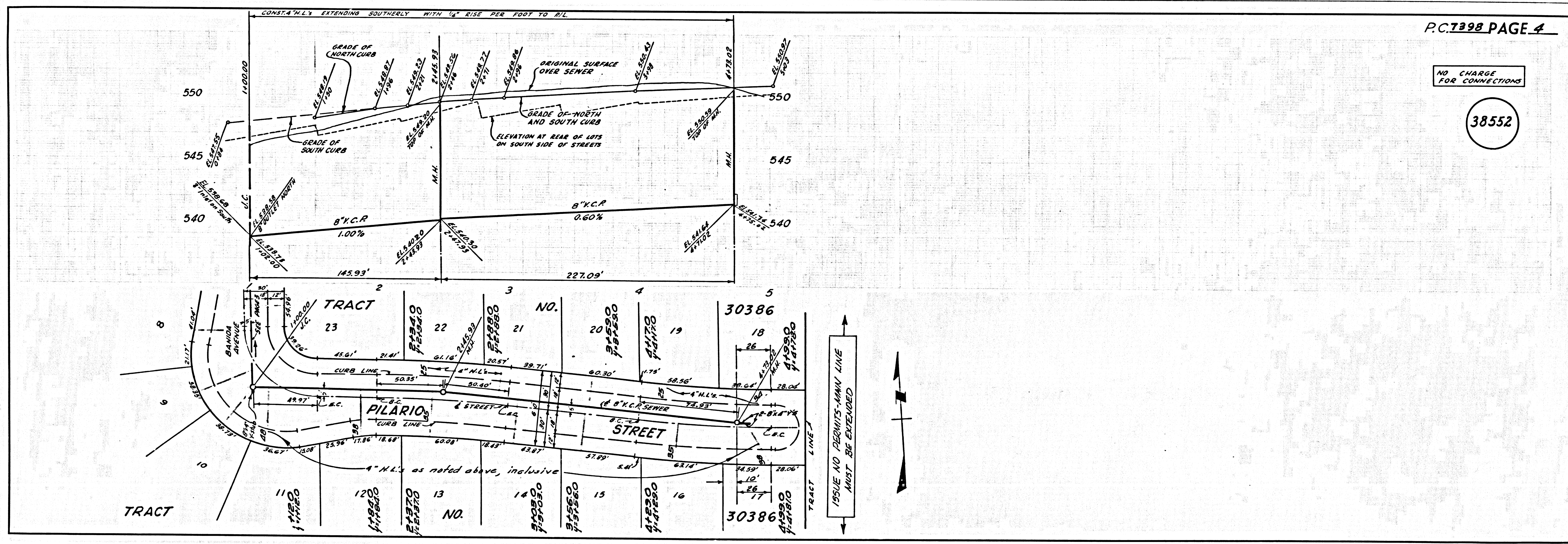
NO CHARGE FOR CONNECTIONS

38551



NO CHARGE FOR CONNECTIONS

38552



ISSUE NO PERMITS-MANU LINE MUST BE EXTENDED



