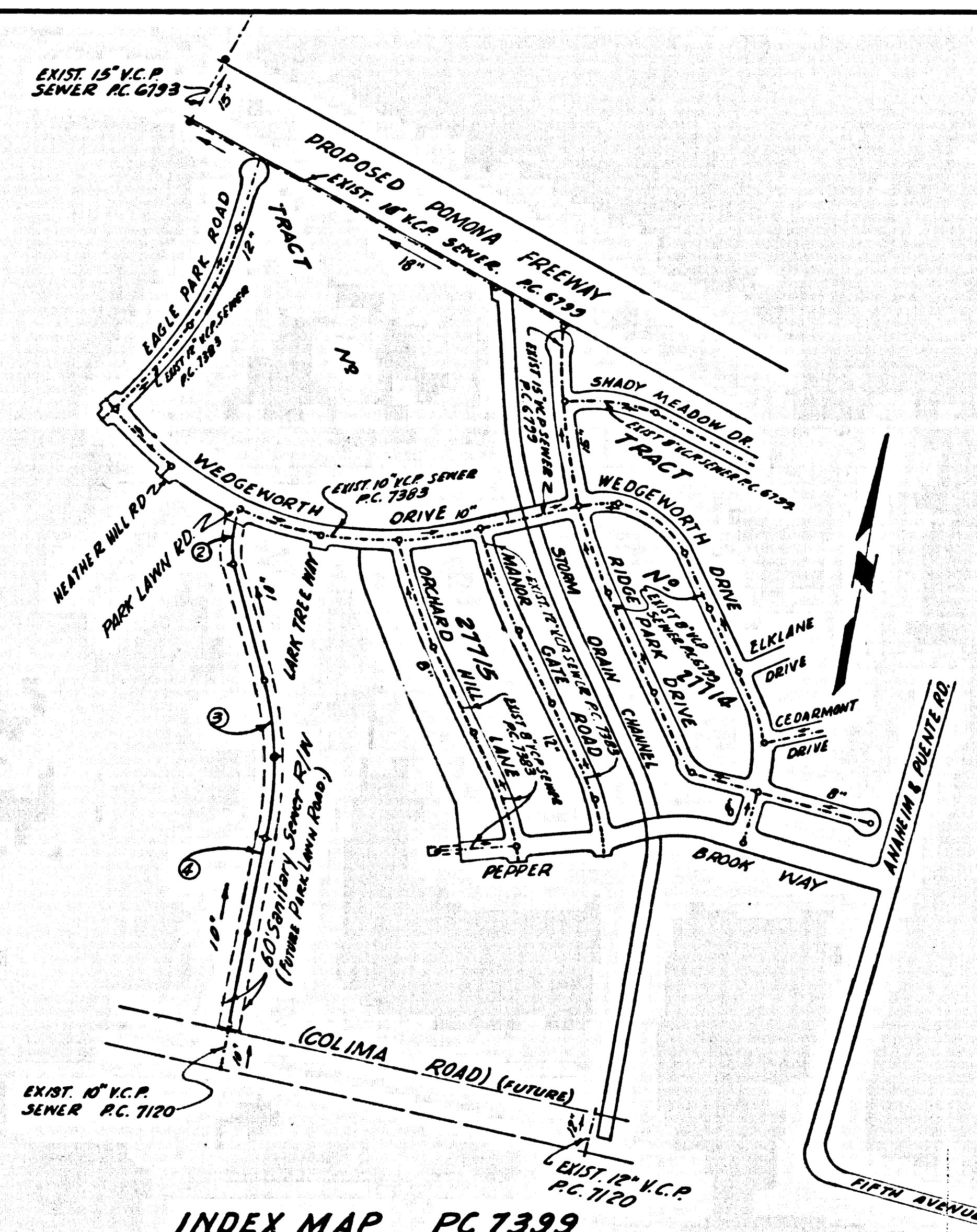


B.M. B.C. 1730 ELEV. 418.512
 4 FT (THICK 24") ON NORTH SIDE OF
 CONG. WALK TO HOUSE NO. 1344
 ANAHEIM-PUENTE ROAD 30' EAST OF E. +
 240' NORTH OF E. BONITA VISTA LANE.
 OTTERBEIN QUAD. 19 65



INDEX MAP PC 7399
 SCALE 1" = 400'

DOUBLE SCALE LA PUENTE BLDG. DIST. NO. 2

PROFILE, ALIGNMENT AND GRADE OF P.C. 7399
 SANITARY SEWERS PAGE 1

EASEMENT NORTH OF COLIMA
 ROAD (FUTURE PARK LAWN ROAD)

PRIVATE CONTRACT NO. 7399

W.S. 38
 2 SHEETS, 4 PAGES 37438
 SCALE: VERT. 1" = 8' HORIZ. 1" = 40' JUNE, 1965

PREPARED IN THE OFFICES OF
 HOPEN, HEDLUND & DARBY INC.
 BY: *Gerald H. Hedlund*
 REG. C. E. NO. 14075

FOR LEGEND SEE PLAN NO. S-1

- NOTES:
1. PROVIDE STAKES ON THE PROPERTY LINE OR PROPERTY LINES PRODUCED AT RIGHT ANGLES TO THE SEWER LINE AT THE CENTER LINE OF EACH MANHOLE.
 2. NO REPRESENTATIVE OF THE COUNTY ENGINEER WILL SURVEY OR LAY OUT ANY PORTION OF THE WORK.
 3. THE PRIVATE ENGINEER SHALL FURNISH THE COUNTY ENGINEER WITH GRADE SHEETS AND STATIONING FOR ALL HOUSE LATERALS AND "T" BRANCHES AND SHALL PROVIDE STAKES FOR THEM AT THEIR PROPER LOCATIONS WITH STATIONING PLAINLY MARKED. ALL HOUSE LATERALS SHALL BE CONSTRUCTED IN A STRAIGHT ALIGNMENT AT RIGHT ANGLES FROM THE MAIN LINE SEWER EXCEPT AS SHOWN ON THE PLANS. HOUSE LATERALS FROM CHIMNEYS SHALL NOT HAVE AN ANGLE OF LESS THAN 45° WITH THE MAIN LINE SEWER. ANY CHANGE IN ALIGNMENT SHALL BE REQUESTED IN WRITING BY THE PRIVATE ENGINEER.
 4. THE PRIVATE ENGINEER SHALL FURNISH THE HOUSE LATERAL DEPTH AT THE 1/4" W. LINE BELOW THE EXIST. GROUND ELEVATION FOR EACH HOUSE LATERAL ON THE GRADE SHEET.
 5. NO REVISIONS SHALL BE MADE IN THESE PLANS WITHOUT THE APPROVAL OF THE COUNTY ENGINEER.
 6. THE CONTRACTOR SHALL NOTIFY THE CONSTRUCTION DIVISION BY TELEPHONE, MADISON 9-4747, EXT. 81353, AT LEAST TWENTY-FOUR HOURS BEFORE STARTING ANY WORK UNDER THIS CONTRACT.
 7. MANHOLES SHALL BE BRICK SEWER STRUCTURES PER S.S. PRECAST CONCRETE MANHOLES PER S-3 OR S-4 MAY BE USED AS AN ALTERNATE IN LOCATIONS APPROVED BY THE COUNTY ENGINEER.
 8. USE STANDARD MANHOLE FRAMES AND COVERS, S-15.
 9. MANHOLE TOPS IN UNIMPROVED RIGHTS-OF-WAY TO BE SIX INCHES ABOVE FINISHED GRADE.
 10. USE EXTRA STRENGTH PIPE. ALL PIPE IS STANDARD DEPTH EXCEPT AS NOTED.
 11. USE MECHANICAL COMPRESSION JOINTS FOR ALL V.C.P. JOINTS PER SPECS. SECS. 36, 48 & 49.
 12. IF A POWER POLE IS WITHIN THREE FEET OF THE SEWER, THE SEWER SHALL BE ENCASED, PER S-23, TWO FEET ON EACH SIDE FROM THE POINT OF INTERFERENCE.
 13. IF DURING THE COURSE OF CONSTRUCTION IT IS DETERMINED THAT THERE IS LESS THAN FOUR FEET OF COVER OVER THE TOP OF A MAIN LINE OF HOUSE LATERAL V.C.P. SEWER WHICH IS NOT INDICATED ON THE PLANS, THE PIPE SHALL BE ENCASED PER S-23, UNLESS OTHERWISE APPROVED BY THE COUNTY ENGINEER.
 14. HOUSE LATERALS TO BE CONSTRUCTED WITH INVERTS AT 1/4" W. LINE 4 FEET BELOW FINISHED GROUND ELEVATION.
 15. RESURFACE ALL TRENCHES WITHIN PAVED AREAS TO MEET L.A. COUNTY ROAD DEPT. OR CALIFORNIA STATE HIGHWAY REQUIREMENTS IN ACCORDANCE WITH PERMITS.
 16. FOR ALLOWABLE SEALER TEST USE FORMULA NO. 3, SPEC. SEC. 54.
 17. ALL STATE AND LOCAL TRENCH SAFETY ORDERS WILL BE STRICTLY ENFORCED.

**ALL FILL MUST BE IN PLACE
 PRIOR TO CONSTRUCTION OF
 THIS SEWER.**

**ISSUE NO HOUSE CONNECTION PERMITS
 UNTIL ALL OUTFALL SEWERS ARE BUILT
 & ACCEPTED.**

**COLLECT WAGES
 AS INDICATED**

Gerald H. Hedlund 8-12-65

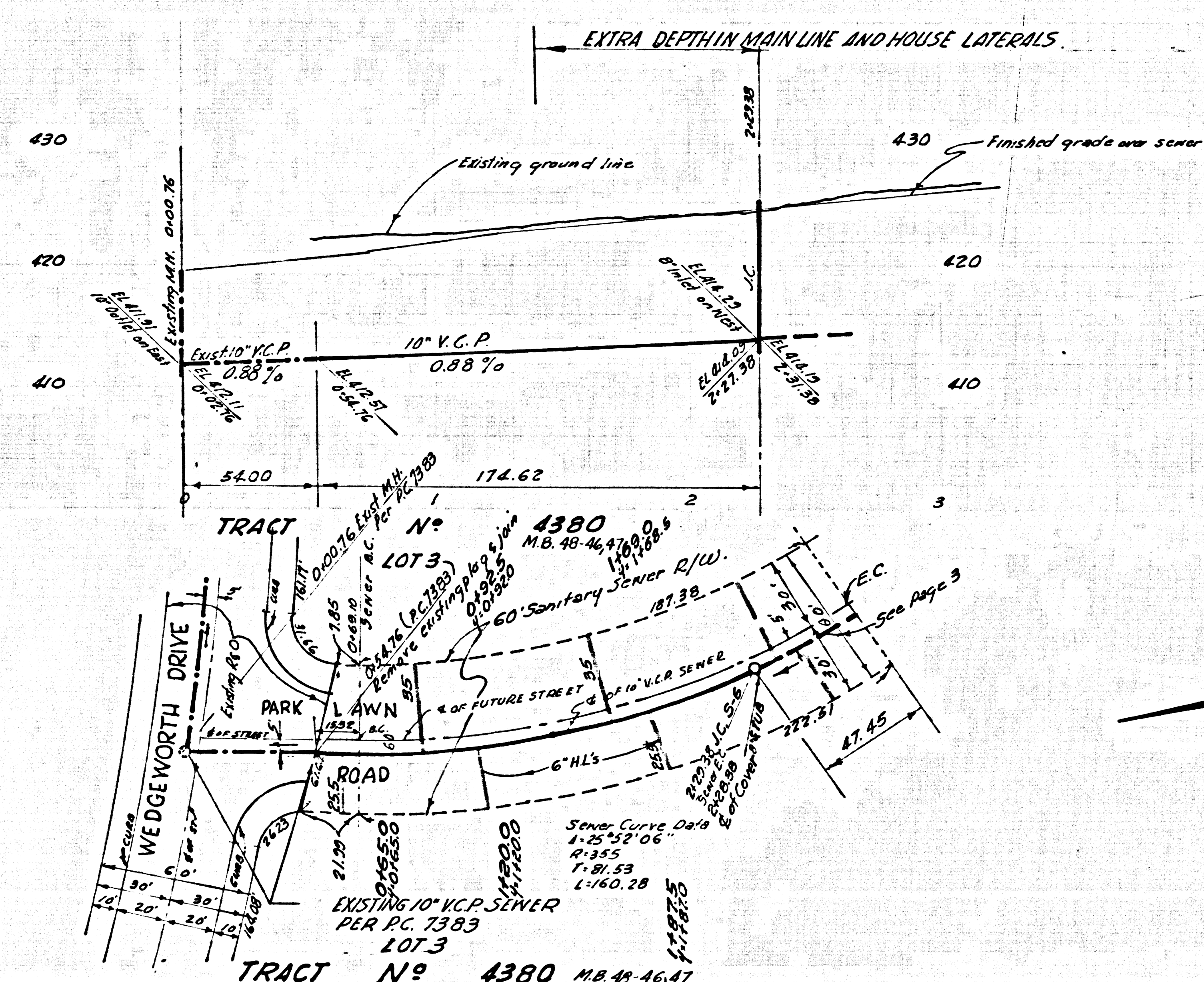
NO CONNECTIONS FOR THE DISPOSAL OF INDUSTRIAL WASTES SHALL BE MADE TO SEWERS SHOWN ON THESE DRAWINGS WITHOUT WRITTEN PERMISSION FROM THE CHIEF ENGINEER AND GENERAL MANAGER OF THE COUNTY SANITATION DISTRICTS.

NOTES:
 GRADES TO WHICH THIS IMPROVEMENT IS TO BE CONSTRUCTED ARE SHOWN ON PLANS AND PROFILES. GRADE POINTS FOR TOP OF CURBS, CENTER LINE OF STREETS, OR CENTER LINE OF ALLEYS ARE SHOWN BY CIRCLES ON PROFILES. AT ALL POINTS BETWEEN DESIGNATED POINTS THE GRADE SHALL BE ESTABLISHED SO AS TO CORRESPOND TO A STRAIGHT LINE DRAWN BETWEEN SAID DESIGNATED POINTS. ELEVATIONS ARE IN FEET ABOVE U.S.C. & G.S. SEA LEVEL DATUM OF 1929.
 THE DRAWING AND THE DATA HEREON ARE HEREBY MADE A PART OF THE SPECIFICATIONS.
 WORK SHALL BE CONSTRUCTED ACCORDING TO STANDARD SPECIFICATIONS DATED JULY 22, 1962, ON FILE IN THE OFFICE OF THE COUNTY ENGINEER AND SHALL BE PROTECTED ONLY IN THE PRESENCE OF THE COUNTY ENGINEER.
 BEFORE WORK CAN BE STARTED, THE CONTRACTOR MUST OBTAIN A PERMIT TO EXCAVATE IN COUNTY STREETS FROM THE L.A. COUNTY ROAD DEPT., DISTRICT OFFICE NO. 11, AND PAY A FEE TO THE COUNTY ENGINEER, ROOM 303, COUNTY ENGINEER'S BUILDING, 108 WEST SECOND STREET OR SAN DIMAS, CALIFORNIA. REGIONAL OFFICE, SUFFICIENT TO COVER THE COST OF CONSTRUCTION INSPECTION AND RECORD PLANS.
 APPROVAL OF THIS PLAN BY THE COUNTY OF LOS ANGELES DOES NOT CONSTITUTE A REPRESENTATION AS TO THE ACCURACY OF THE LOCATION OR OF THE EXISTENCE OR NON-EXISTENCE OF ANY UNDERGROUND STREET PIPE, OR STRUCTURE WITHIN THE LIMITS OF THE PROJECT. THIS NOTE APPLIES TO ALL PAGES.
 IF WORK IS TO BE DONE IN A STATE HIGHWAY, A PERMIT MUST BE OBTAINED FROM THE STATE OF CALIFORNIA, DIVISION OF HIGHWAYS, 126 SOUTH SPRING STREET, LOS ANGELES, CALIFORNIA.

COUNTY OF LOS ANGELES, CALIFORNIA
 JOHN A. LAMBIE, COUNTY ENGINEER J. D. PARKHURST, CHIEF ENGINEER
 CO. SAN. DIST. NO. 21
 APPROVED BY: *Russell* ASSISTANT SANITATION ENGINEER APPROVED BY: *G. Hedlund* OFFICE ENGINEER

SUBMITTED BY: *Richard W. Hedlund*
 SAN DIMAS REGIONAL ENGINEER
 CHECKED BY: *G. Hedlund* 8-17-65
 REG. C. E. NO. 14075

J. N. 0365.96



P. C. 7399 PAGE 2
 DOUBLE SCALE
 NO CHARGE FOR CONNECTIONS

37439

