

BELLFLOWER BLDG. DIST. NO. 4.07

- NOTES:
1. USE "WEDGE-LOCK" OR "SPEED-SEAL" FOR ALL V.C.P. JOINTS PER SPEC., SECS. 36 & 40.
 2. TO BE CONSTRUCTED UNDER JEWEL MAINTENANCE FORCE ACCOUNT.
 3. FOR BENCH MARK DATUM REFER TO SANITATION DISTRICT TRUNK SEWER PLANJ- EAST COMPTON BLVD. RELIEF TRUNK SEWER.

PAGE 1
P.C. 7400
PAGE 1
J.N. 0515.10

SANITARY SEWERS 38085

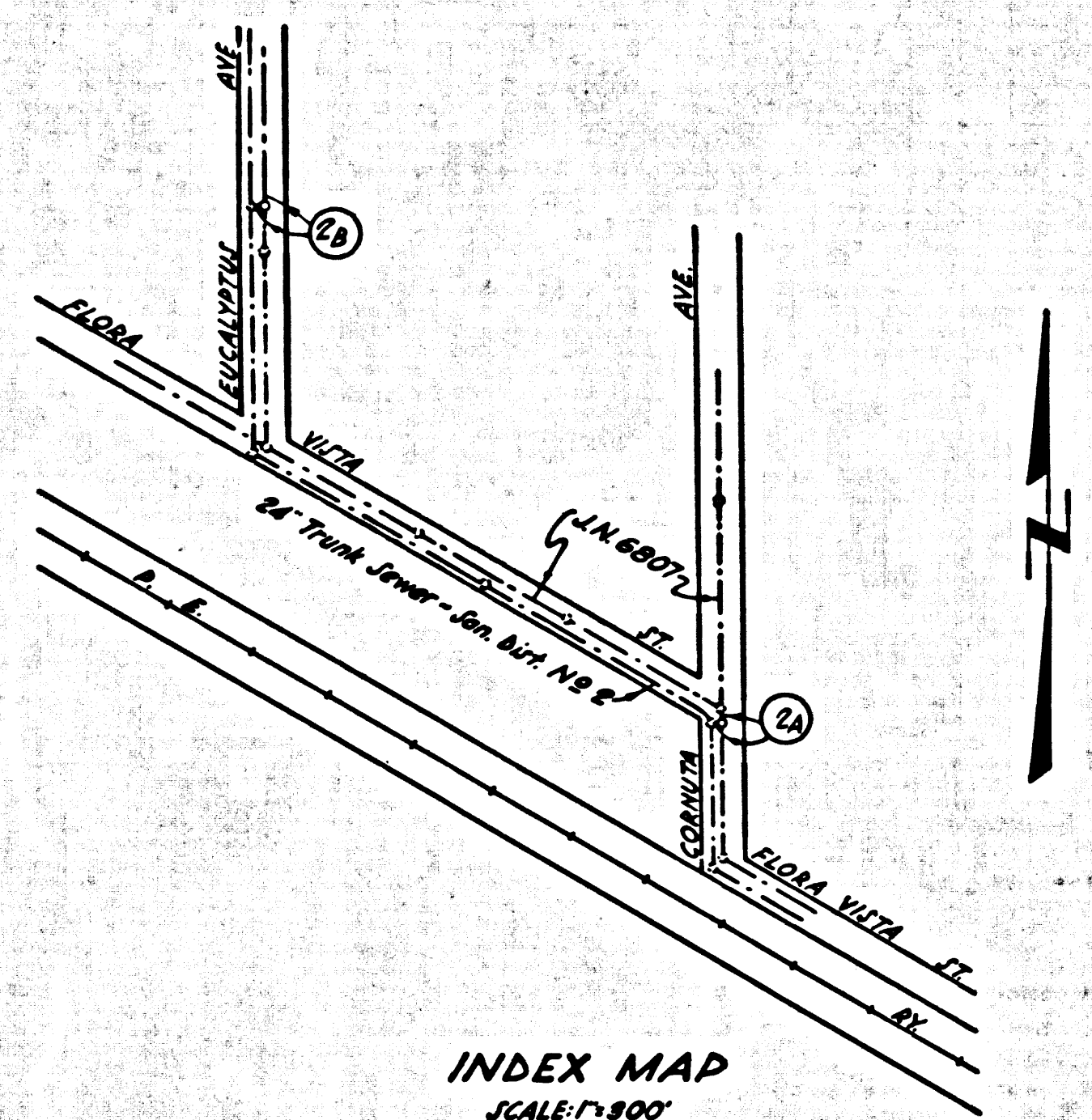
FLORA VISTA STREET PRIVATE CONTRACT NO. 7400

W.S. 93
IN THE CITY OF BELLFLOWER, CALIFORNIA
FOR THE CONSOLIDATED SEWER MAINTENANCE DISTRICT
PAGE 1 OF 2 PAGES

SCALE VERT. 1"=4'
HORIZ. 1"=40'
MARCH, 1966
JOHN A. LAMBIE CITY ENGINEER

RECOMMENDED *Carl J. ...* APPROVED *Robert E. ...*
JEWEL MAINTENANCE SUPERINTENDENT ASSISTANT SANITATION ENGINEER

JOHN A. DARKHURST
CHIEF ENGINEER OF COUNTY
SANITATION DISTRICT NO. 2
W. P. ...
OFFICE ENGINEER

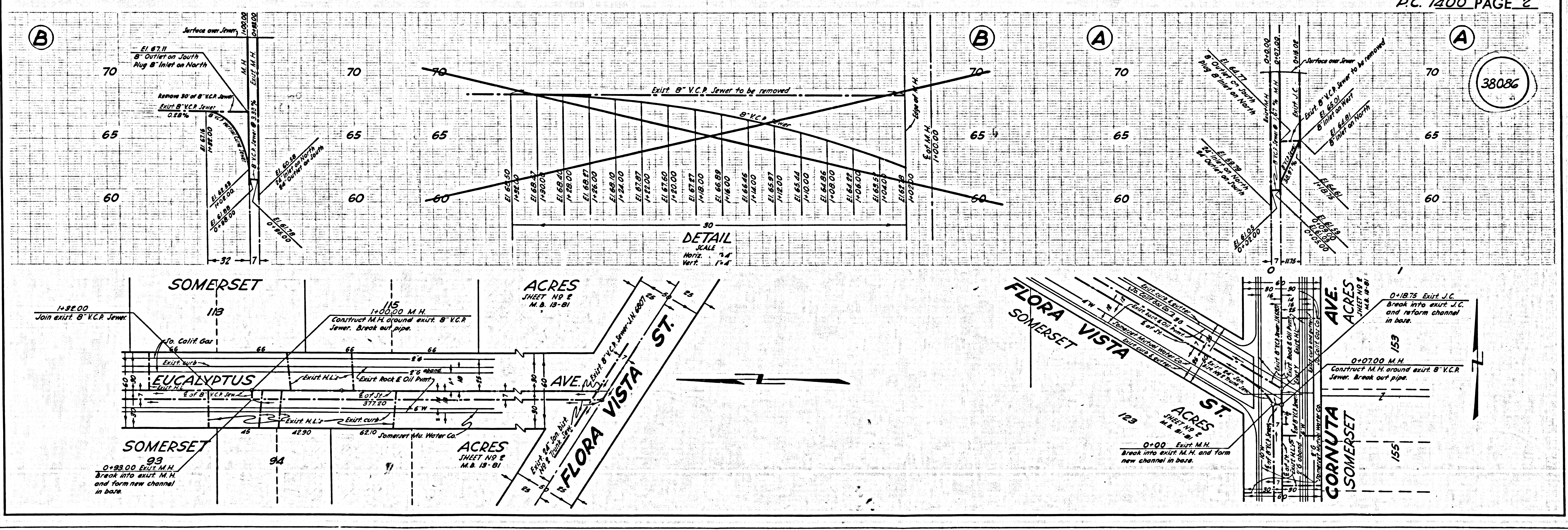


BEFORE BREAKING INTO ANY EXISTING STRUCTURE AND BEFORE FINAL ACCEPTANCE OF THIS WORK, COUNTY SANITATION DISTRICT (DU 4-1281) SHALL BE NOTIFIED IN ORDER THAT REQUIRED INSPECTION CAN BE MADE.

NO CONNECTIONS FOR THE DISPOSAL OF INDUSTRIAL WASTES SHALL BE MADE TO SEWERS SHOWN ON THESE DRAWINGS WITHOUT WRITTEN PERMISSION FROM THE CHIEF ENGINEER AND GENERAL MANAGER OF THE COUNTY SANITATION DISTRICTS.

REFERENCES			
W.S. 93	DESIGNED	ROGA	NOV., 1965
	TRACED	ROGA	NOV., 1965
	CHECKED	CADWELL	NOV., 1965

P.C. 7400 PAGE 2



38086