

Each end of the baffle is to extend one foot into unobstructed ground. The baffle shall be spaced so that the top of the lower part is level with the bottom of the next higher part. The space over the lower part of baffle is to be filled, braced in place, painted with rusted oil and the gaps and crevices well covered as required.

**BAFFLE DETAIL**  
No Scale

LOTS 1, 2, 3, 75, 76, 105 served by sewers constructed under P.C. 7405

DATE	REVISIONS
10-5-66	REVISED PLAN LOCATION IN WEST SIDE PROPERTY DRIVE PAGE 2 TO CONFORM TO TRACT NO. 26672

**ALLOW NO HOUSE CONNECTION PERMITS UNTIL PUMP STATION IS CONSTRUCTED. CALL SANITATION DIVISION.**

**DOUBLE SCALE**  
**CALABASAS BLDG. DIST. NO. 91**

- PROVIDE STAKES ON THE PROPERTY LINE OR PROPERTY LINES PRODUCED AT RIGHT ANGLES TO THE SEWER LINE AT THE CENTER LINE OF EACH MANHOLE.
- NO REPRESENTATIVE OF THE COUNTY ENGINEER WILL SURVEY OR LAY OUT ANY PORTION OF THE WORK.
- THE PRIVATE ENGINEER SHALL FURNISH THE COUNTY ENGINEER WITH GRADE SHEETS AND STATIONING FOR ALL HOUSE LATERALS AND Y BRANCHES AND SHALL PROVIDE STAKES FOR THEM AT THEIR PROPER LOCATIONS WITH STATIONING PLAINLY MARKED. ALL HOUSE LATERALS SHALL BE CONSTRUCTED IN A STRAIGHT ALIGNMENT AT RIGHT ANGLES FROM THE MAIN LINE SEWER EXCEPT AS SHOWN ON THE PLANS. HOUSE LATERALS FROM CHIMNEYS SHALL NOT HAVE AN ANGLE OF LESS THAN 45° WITH THE MAIN LINE SEWER. ANY CHANGE IN ALIGNMENT SHALL BE REQUESTED BY THE PRIVATE ENGINEER.
- THE PRIVATE ENGINEER SHALL FURNISH THE HOUSE LATERAL SEWER AT THE PROPERTY LINE BELOW THE TOP OF CURB ELEVATION FOR EACH HOUSE LATERAL ON THE GRADE SHEET.
- NO REVISIONS SHALL BE MADE IN THESE PLANS WITHOUT THE APPROVAL OF THE COUNTY ENGINEER.
- THE CONTRACTOR SHALL NOTIFY THE CONSTRUCTION DIVISION BY TELEPHONE, MADISON 9-0747, EXT. 2534, AT LEAST TWENTY-FOUR HOURS BEFORE STARTING ANY WORK UNDER THE CONTRACT.
- MANHOLES SHALL BE BRICK SEWER STRUCTURES PER S-3. PRECAST CONCRETE MANHOLES PER S-5 OR S-6 MAY BE USED AS AN ALTERNATE IN LOCATIONS APPROVED BY THE COUNTY ENGINEER.
- USE STANDARD MANHOLE FRAMES AND COVERS, S-5, EXCEPT AS NOTED.
- MANHOLE TOPS IN UNIMPROVED SHORT-OF-WAY TO BE SET HIGHER ABOVE FINISHED GRADE.
- USE EXTRA STRENGTH PIPE. ALL PIPE IS STANDARD WITH EXCEPT AS NOTED.
- USE CEMENT MORTAR OR MECHANICAL COMPRESSION JOINTS FOR ALL V.C.P. JOINTS PER SPECS. SECS. 34 & 40 & 41.
- WHERE FIVE FOOT GROUND WATER IS ENCOUNTERED DURING THE CONSTRUCTION OF THE SEWERS, THE V.C.P. JOINTS SHALL BE OF JOINT COMPOUND PER SPECS., SECS. 32 & 46, OR MECHANICAL COMPRESSION JOINTS PER SPECS., SEC. 34.
- IF A POWER POLE IS WITHIN THREE FEET OF THE SEWER, THE SEWER SHALL BE ENCASED, PER S-23, TWO FEET ON EACH SIDE FROM THE POINT OF INTERFERENCE.
- IF DURING THE COURSE OF CONSTRUCTION IT IS DETERMINED THAT THERE IS LESS THAN FOUR FEET OF COVER OVER THE TOP OF A MAIN LINE OR HOUSE LATERAL V.C.P. SEWER WHICH IS NOT INDICATED ON THE PLANS, THE PIPE SHALL BE ENCASED PER S-23.
- WHERE COVER IS ENCOUNTERED OTHER THAN APPROVED BY THE COUNTY ENGINEER.
- HOUSE LATERALS TO BE CONSTRUCTED WITH INVERTS AT PROPERTY LINE. . . . FEET BELOW CURB GRADE EXCEPT AS NOTED.
- REPAIR ALL TRENCHES WITHIN PAVED AREAS TO MEET L.A. COUNTY ROAD DEPT. OR CALIFORNIA STATE HIGHWAY REQUIREMENTS IN ACCORDANCE WITH PERMITS.
- FOR STANDARD SPECIFICATIONS REFER TO THE SPECIFICATIONS PER S-1, SPECS. SEC. 64.
- IF AN ACCEPTABLE REPRESENTATIVE OF THE COUNTY ENGINEER IS NOT AVAILABLE TO BE ADMITTED TO THE CONSTRUCTION DIVISION, CONSTRUCTION SHALL BE STOPPED UNTIL SUCH REPRESENTATIVE IS AVAILABLE. WITH A FEW STANDARD METERS OF 120' & 150' - 180'.
- NO CONSTRUCTION IS PERMITTED IN FULLY ADJACENT AREAS UNLESS THE RESIDUAL REMAINS OF CONSTRUCTION IS LESS THAN 20%.
- IF THE RESIDUAL REMAINS OF CONSTRUCTION IS LESS THAN 20%, ALL MAIN LINE & HOUSE LATERALS SHALL BE ENCASED PER S-23 OR WITH A BRICK CASE, PER S-31, CASE BY SPECIAL PERMIT PER S-34 AND REQUIRED.
- IF THE RESIDUAL REMAINS OF CONSTRUCTION IS 20% OR GREATER, THE BRICK CASE IS NOT REQUIRED.
- ALL SEWER & HOUSE LATERAL SEWER DEPT. SHALL BE PROPERLY ENCASED.

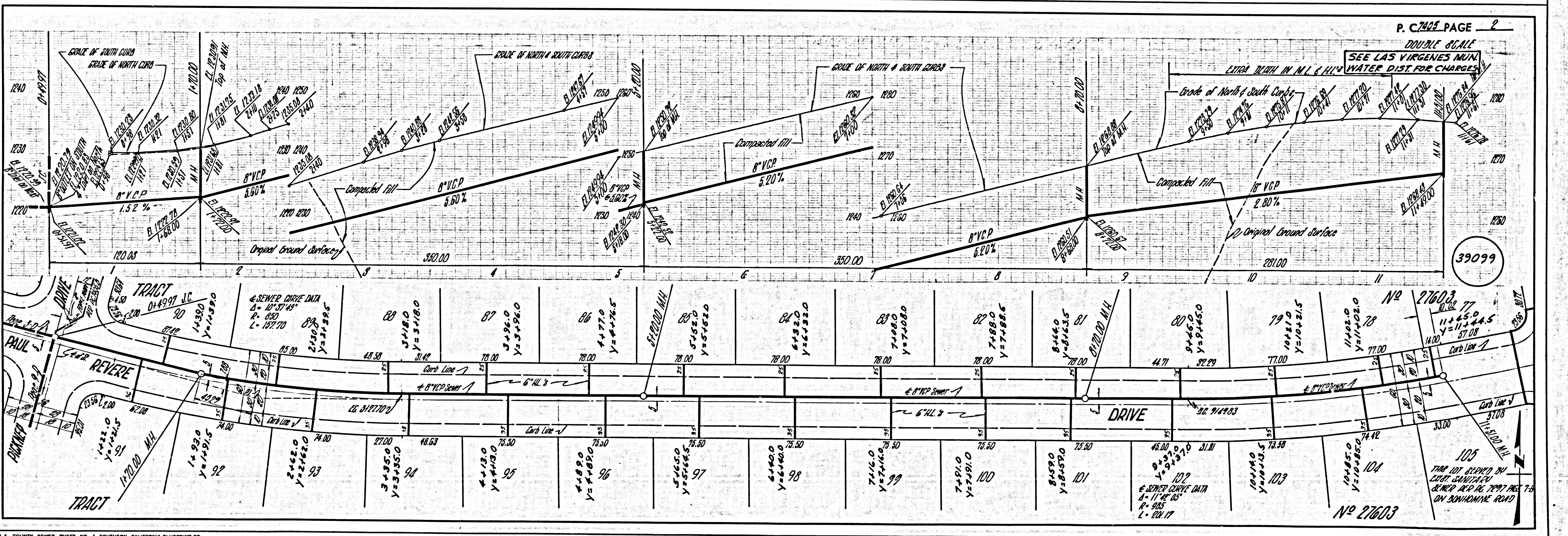
PROFILE ALIGNMENT AND GRADE OF  
**SANITARY SEWERS** PAGE 1

TO BE CONSTRUCTED IN  
**TRACT No. 27603**  
**PRIVATE CONTRACT NO. 7405**

W.S. 60  
9 SHEETS, 9 PAGES  
SCALE: VERT. 1" = 4' HORIZ. 1" = 40'  
DATE: JUNE, 1965  
PREPARED IN THE OFFICES OF  
**JOHN LAMBE COUNTY ENGINEER**  
920 N. VIRGENES BLVD., LOS ANGELES, CALIFORNIA R. 2005  
By **Fred J. Erwin**  
REG. C. E. NO. 12872

FOR LEGEND SEE PLAN NO. S-1

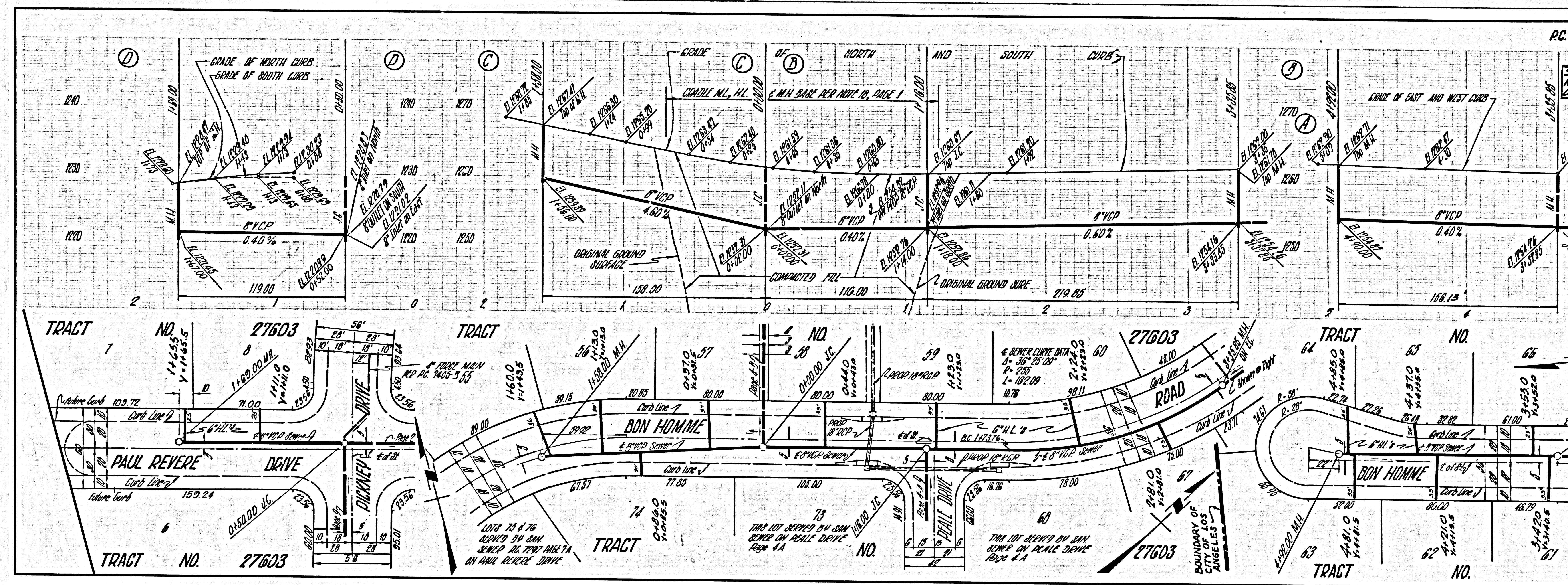
NOTES:  
GRADES TO WHICH THIS IMPROVEMENT IS TO BE CONSTRUCTED ARE SHOWN ON PLANS AND PROFILES. GRADE POINTS FOR TOP OF CURBS, CENTER LINE OF STREETS, OR CENTER LINE OF ALLEYS ARE SHOWN BY CIRCLES ON PROFILES. AT ALL POINTS BETWEEN DESIGNATED POINTS THE GRADE SHALL BE ESTABLISHED SO AS TO CONFORM TO A STRAIGHT LINE DRAWN BETWEEN SAID DESIGNATED POINTS. THIS DRAWING AND THE DATA HEREON ARE HEREBY MADE A PART OF THE SPECIFICATIONS.  
THESE WORKS SHALL BE CONSTRUCTED ACCORDING TO STANDARD SPECIFICATIONS DATED 2/22/52, ON FILE IN THE OFFICE OF THE COUNTY ENGINEER AND SHALL BE PROTECTED ONLY IN THE PRESENCE OF THE COUNTY ENGINEER.  
WHERE WORK IS TO BE DONE ON A STATE HIGHWAY, A PERMIT MUST BE OBTAINED FROM THE STATE OF CALIFORNIA, DIVISION OF HIGHWAYS, 120 SOUTH SPRING STREET, LOS ANGELES, CALIFORNIA.  
**COUNTY OF LOS ANGELES, CALIFORNIA**  
**JOHN A. LAMBE, COUNTY ENGINEER** L.A.S. VIRGENES MUNICIPAL WATER DISTRICT  
APPROVED BY: **Paul S. Klein** ASSISTANT SANITATION ENGINEER  
SUBMITTED BY: **Fred J. Erwin** REGIONAL ENGINEER  
CHECKED BY: **James S. Updegraff** REG. C. E. NO. 15423  
APPROVED BY: **John A. Lambie** CHIEF ENGINEER 1965  
APPROVED BY: **Howard Stobbes** CHIEF ENGINEER - GENERAL MANAGER  
J. N. 0365, 99



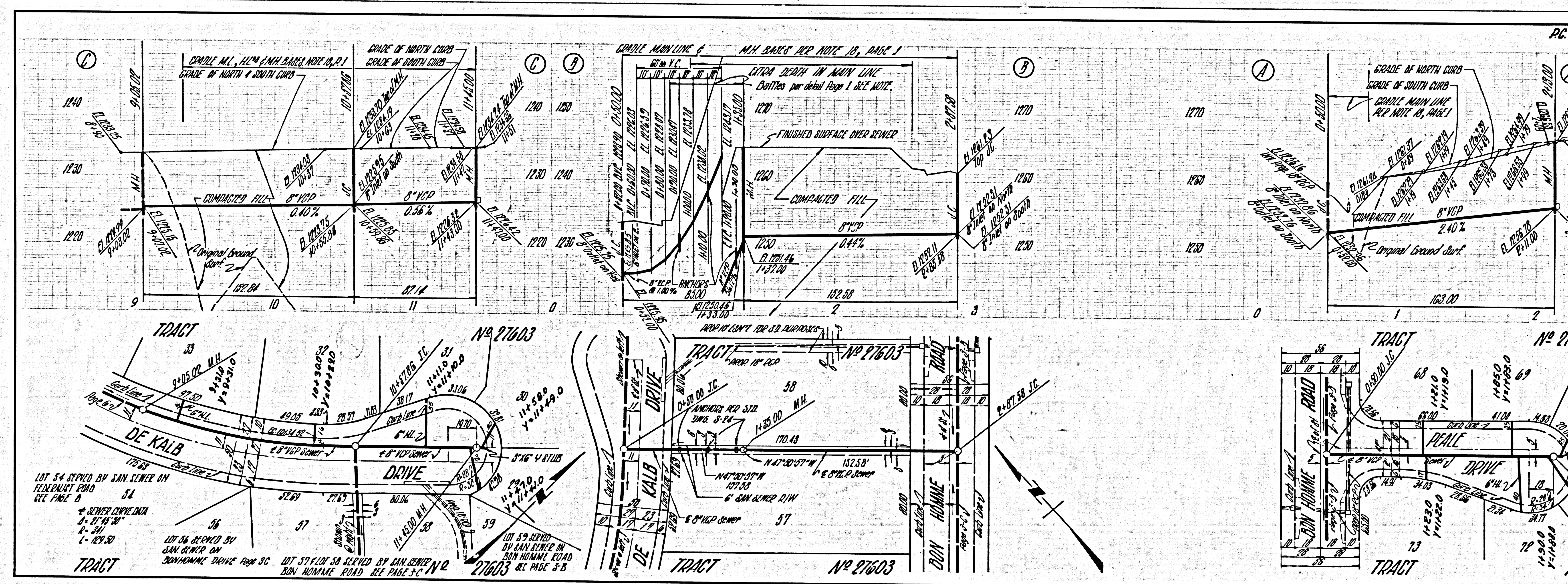


CHANGES 119.00 S.C.  
9-2-66

DOUBLE SCALE  
SEE LAS VIRGENES  
MUNICIPAL WATER  
DIST. FOR CHARGES



DOUBLE SCALE  
SEE LAS VIRGENES  
MUNICIPAL WATER  
DIST. FOR CHARGES

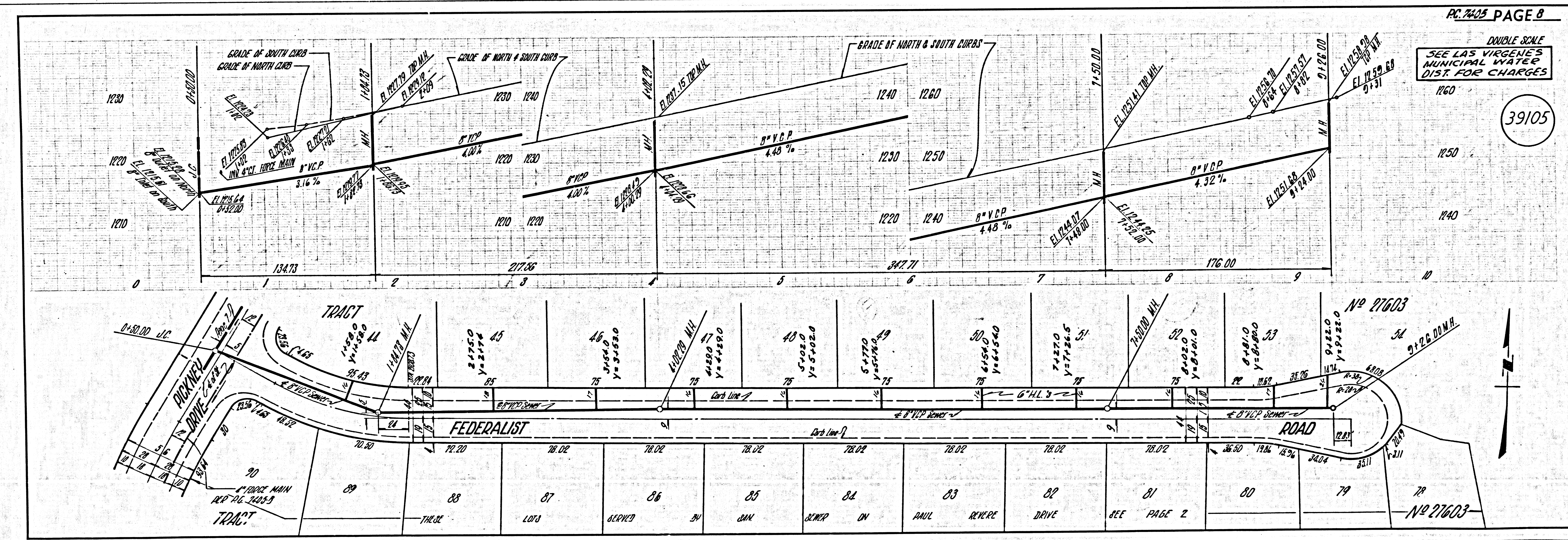
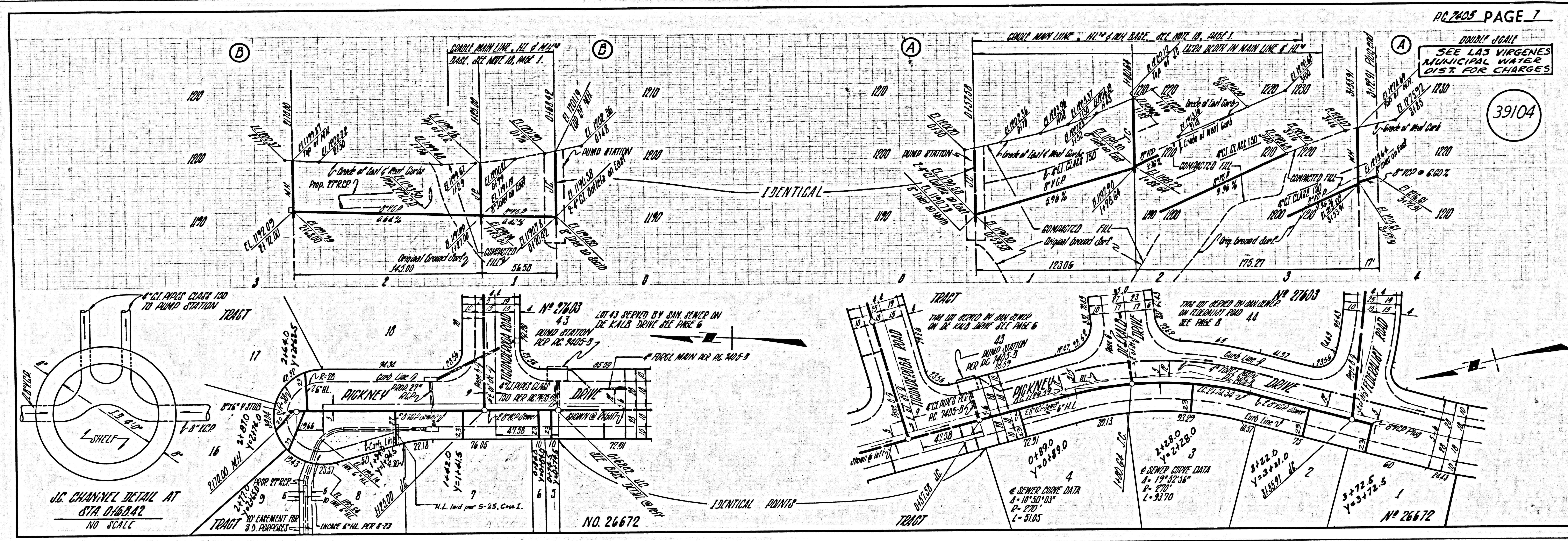


COPY 54 00013 711



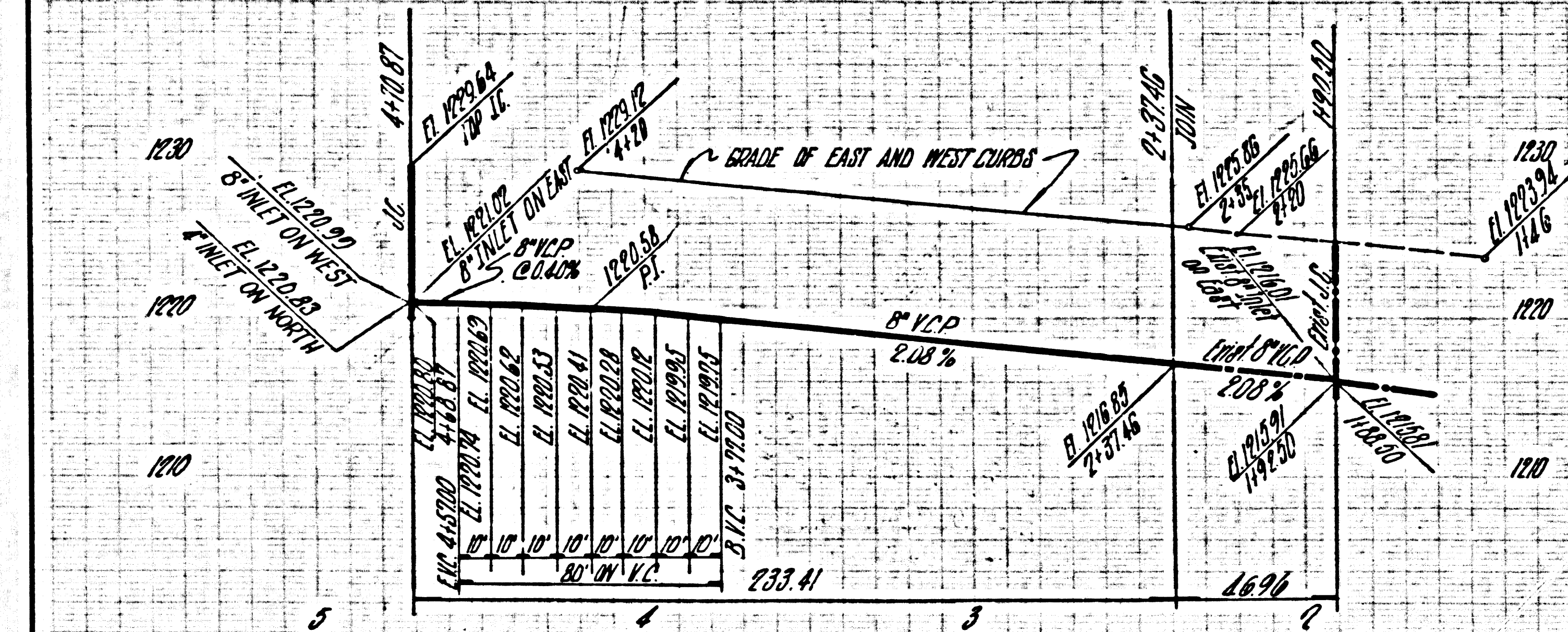








DOUBLE SCALE  
SEE LAS VIRGENES  
MUNICIPAL WATER  
DIST. FOR CHARGES



39106

