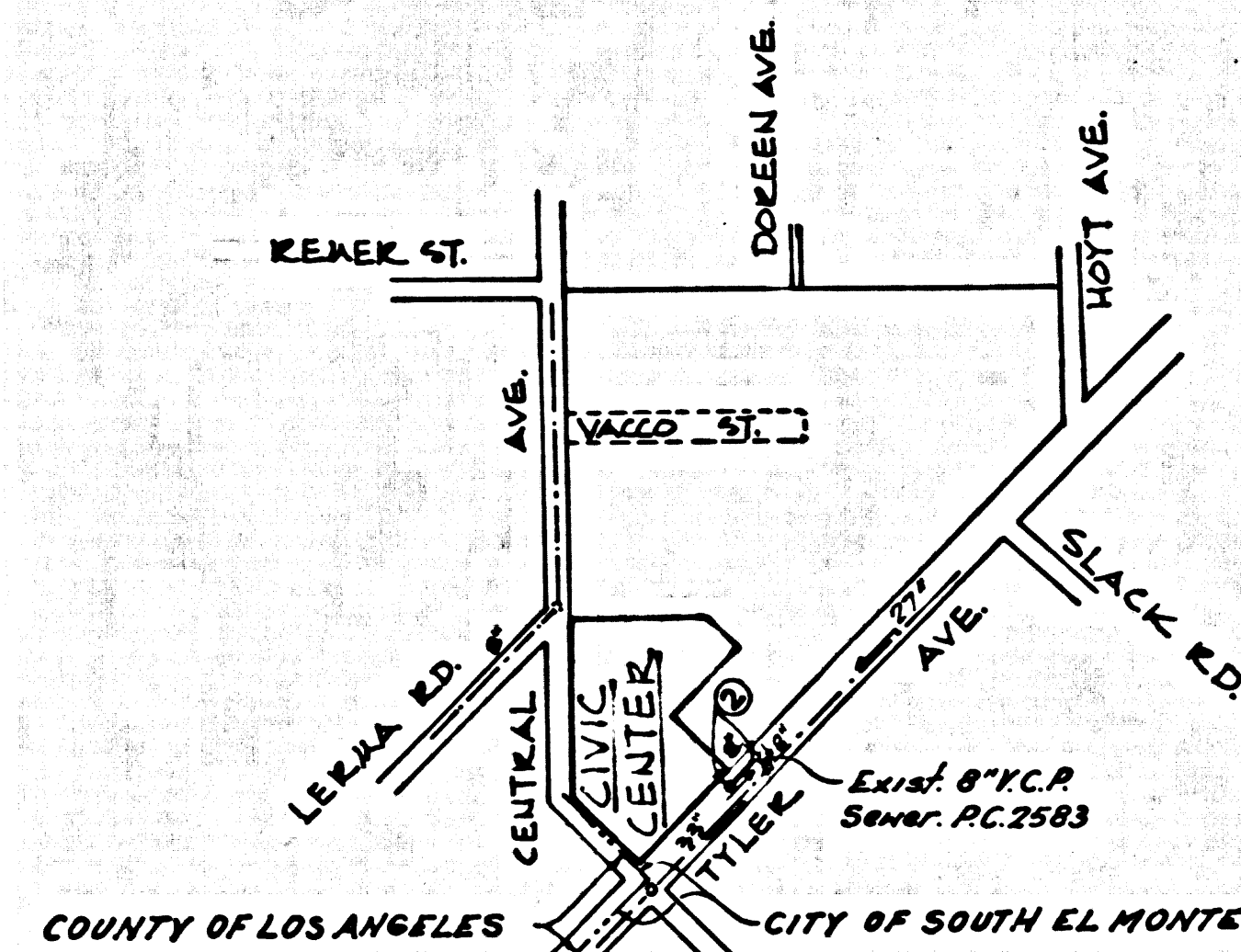


B.M. S.G. 1537 ELEV. 243.192  
 1.41 IN N.W. CORNER OF WALK 75 FT.  
 SOUTH 51 FT. EAST OF E. INTERSECTION  
 OF RUSH & CENTRAL  
 WHITTIER QUAD. 19 65



CITY OF SOUTH EL MONTE  
 CIVIC CENTER  
 INDEX MAP  
 P.C. 7410  
 SCALE: 1" = 600'

© Indicates Page Number

NO CONNECTIONS FOR THE DISPOSAL OF INDUSTRIAL WASTES SHALL BE MADE TO SEWERS SHOWN ON THESE DRAWINGS WITHOUT WRITTEN PERMISSION FROM THE CHIEF ENGINEER AND GENERAL MANAGER OF THE COUNTY SANITATION DISTRICTS.

### SOUTH EL MONTE BLDG. DIST. NO. 5.04

- NOTES:
1. PROVIDE STAKES ON THE PROPERTY LINE OR PROPERTY LINES PRODUCED AT RIGHT ANGLES TO THE SEWER LINE AT THE CENTER LINE OF EACH MANHOLE.
  2. NO REPRESENTATIVE OF THE CITY ENGINEER WILL SURVEY OR LAY OUT ANY PORTION OF THE WORK.
  3. THE PRIVATE ENGINEER SHALL FURNISH THE CITY ENGINEER WITH GRADE SHEETS AND STATIONING FOR ALL HOUSE LATERALS AND Y BRANCHES AND SHALL PROVIDE STAKES FOR THEM AT THEIR PROPER LOCATIONS WITH STATIONING PLAINLY MARKED. ALL HOUSE LATERALS SHALL BE CONSTRUCTED IN A STRAIGHT ALIGNMENT AT RIGHT ANGLES FROM THE MAIN LINE SEWER EXCEPT AS SHOWN ON THE PLANS. HOUSE LATERALS FROM CHIMNEYS SHALL NOT HAVE AN ANGLE OF LESS THAN 45° WITH THE MAIN LINE SEWER. ANY CHANGE IN ALIGNMENT SHALL BE REQUESTED IN WRITING BY THE PRIVATE ENGINEER.
  4. THE PRIVATE ENGINEER SHALL FURNISH THE HOUSE LATERAL DEPTH AT THE PROPERTY LINE BELOW THE TOP OF CURB ELEVATION FOR EACH HOUSE LATERAL ON THE GRADE SHEET.
  5. NO REVISIONS SHALL BE MADE IN THESE PLANS WITHOUT THE APPROVAL OF THE CITY ENGINEER.
  6. THE CONTRACTOR SHALL NOTIFY THE CONSTRUCTION DIVISION BY TELEPHONE, MADISON 9-8747, EXT. 8158, AT LEAST TWENTY-FOUR HOURS BEFORE STARTING ANY WORK UNDER THIS CONTRACT.
  7. MANHOLES SHALL BE BRICK SEWER STRUCTURES PER S-8 PRECAST CONCRETE MANHOLES PER S-8 OR S-8 MAY BE USED AS AN ALTERNATE IN LOCATIONS APPROVED BY THE COUNTY ENGINEER.
  8. USE STANDARD MANHOLE FRAMES AND COVERS, S-18 UNLESS OTHERWISE SPECIFIED.
  9. MANHOLE TOPS IN UNIMPROVED RIGHTS-OF-WAY TO BE SIX INCHES ABOVE FINISHED GRADE.
  10. USE EXTRA STRENGTH PIPE, ALL PIPE IS STANDARD DEPTH UNLESS OTHERWISE SPECIFIED.
  11. USE MECHANICAL COMPRESSION JOINTS FOR ALL V.C.P. JOINTS PER SPEC'S, SECS. 36, 48 & 49, UNLESS OTHERWISE SPECIFIED.
  12. WHERE EVER GROUND WATER IS ENCOUNTERED DURING THE CONSTRUCTION OF THE SEWERS, THE V.C.P. JOINTS SHALL BE OF JOINT COMPENSATING TYPE PER SPEC'S, SECS. 36, 48 & 49, OR MECHANICAL COMPRESSION JOINTS PER SPEC'S, SEC. 36, 48 & 49.
  13. IF A POWER POLE IS WITHIN THREE FEET OF THE SEWER, THE SEWER SHALL BE ENCASED, PER S-28, TWO FEET ON EITHER SIDE FROM THE POINT OF INTERFERENCE.
  14. IF DURING THE COURSE OF CONSTRUCTION IT IS DETERMINED THAT THERE IS LESS THAN FOUR FEET OF COVER OVER THE TOP OF A MAIN LINE OR HOUSE LATERAL V.C.P. SEWER WHICH IS NOT INDICATED ON THE PLANS, THE PIPE SHALL BE ENCASED PER S-28 UNLESS OTHERWISE APPROVED BY THE COUNTY ENGINEER.
  15. HOUSE LATERALS TO BE CONSTRUCTED WITHIN SIX FEET OF PROPERTY LINE UNLESS OTHERWISE SPECIFIED.
  16. RESURFACE ALL FINISHED DRIVEWAYS WITHIN PAVED AREAS TO MEET L.A. COUNTY ROAD DEPT. OR CALIFORNIA STATE HIGHWAY REQUIREMENTS IN ACCORDANCE WITH PERMITS.
  17. FOR ALLOWABLE LEAKAGE TEST USE FORMULA NO. 1, SPEC. SEC. 54.
  18. ALL STATE AND LOCAL TRENCH SAFETY ORDERS WILL BE RIGIDLY ENFORCED.
  19. MARKS IN CIRCLES AT ENDS OF HOUSE LATERALS INDICATE 1/4" SHALL BE LAID HORIZONTAL. HOUSE LATERALS SHALL BE CONSTRUCTED WITH 1/4" RISE PER FOOT TO THE PROPERTY LINE.

COLLECT CHARGES AS INDICATED  
 W. G. JEN 7/27/65

PROFILE ALIGNMENT AND GRADE OF **P.C. 7410**  
**SANITARY SEWERS** PAGE 1  
 TO BE CONSTRUCTED IN

CIVIC CENTER SITE  
 CITY OF SOUTH EL MONTE  
 PRIVATE CONTRACT NO. 7410

W.S. 37, B 2  
 1 SHEETS, 2 PAGES  
 SCALE: VERT. 1" = 4'  
 HORIZ. 1" = 40'  
 JULY 15, 1965  
 38708

PREPARED IN THE OFFICES OF  
**H.C. VANDEN BOSSCHE AND ASSOCIATES**

By Richard S. Bunn  
 REG. C.E. NO. 14074

FOR LEGEND SEE PLAN NO. S-1

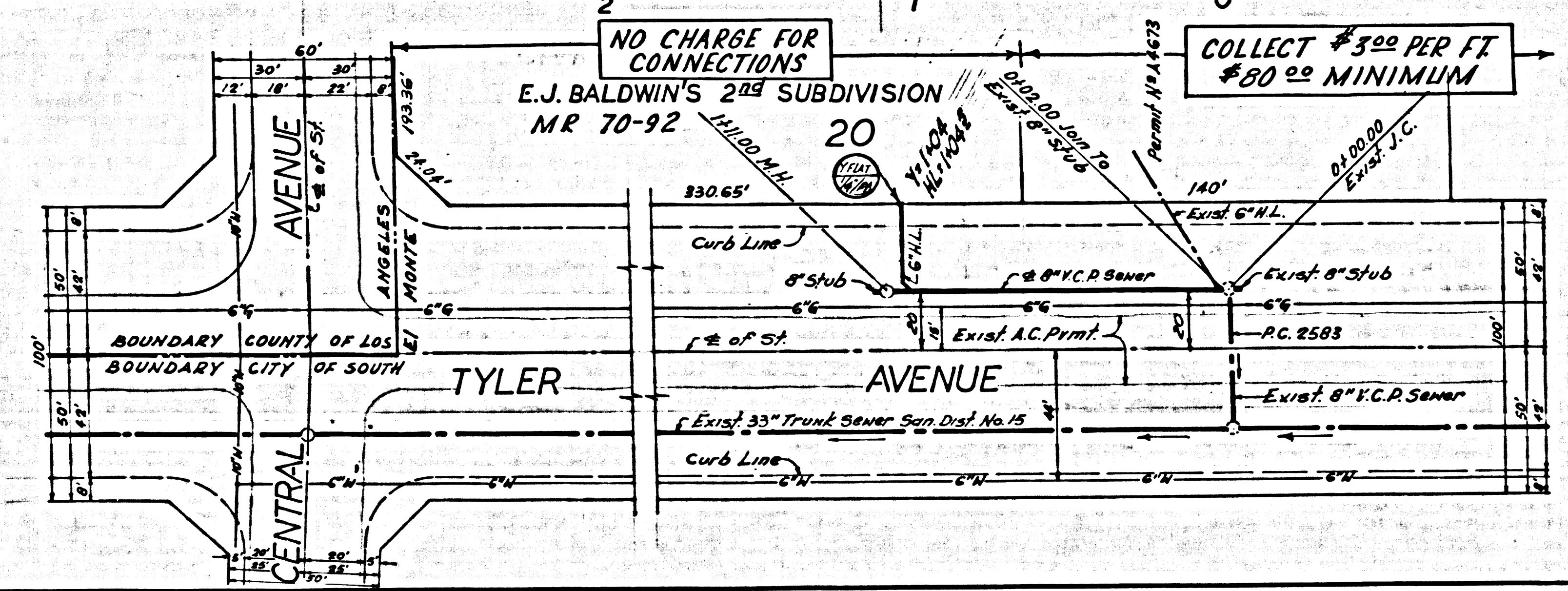
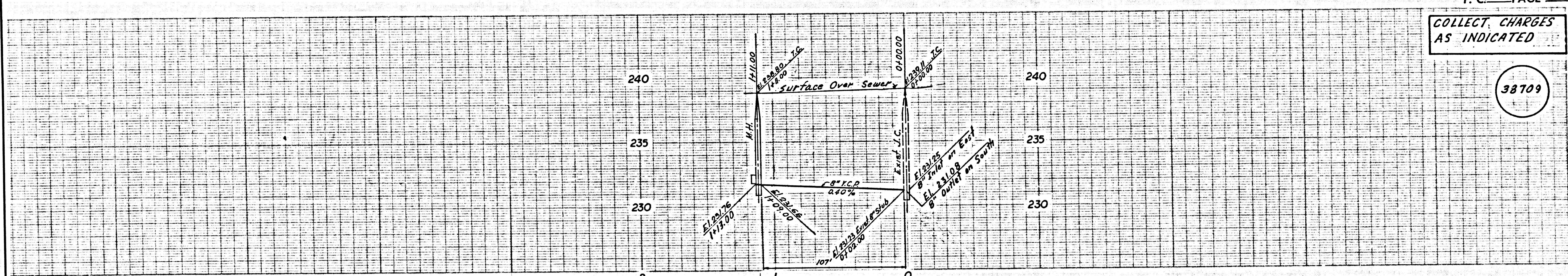
NOTES:  
 GRADES TO WHICH THIS IMPROVEMENT IS TO BE CONSTRUCTED ARE SHOWN ON PLANS AND PROFILES. GRADE POINTS FOR TOP OF CURBS, CENTER LINE OF STREETS, OR CENTER LINE OF ALLEYS ARE SHOWN BY CIRCLES ON PROFILES. AT ALL POINTS BETWEEN DESIGNATED POINTS THE GRADE SHALL BE ESTABLISHED SO AS TO CONFORM TO A STRAIGHT LINE DRAWN BETWEEN SAID DESIGNATED POINTS. ELEVATIONS ARE IN FEET ABOVE U.S.C. & G.S. SEA LEVEL DATUM OF 1929. THESE DRAWINGS AND THE DATA HEREON ARE HEREBY MADE A PART OF THE SPECIFICATIONS. WORK SHALL BE CONSTRUCTED ACCORDING TO STANDARD SPECIFICATIONS DATED MAY 25, 1962, ON FILE IN THE OFFICE OF THE CITY ENGINEER AND SHALL BE PROTECTED ONLY IN THE PRESENCE OF THE CITY ENGINEER. BEFORE WORK CAN BE STARTED, THE CONTRACTOR MUST OBTAIN A PERMIT TO EXCAVATE IN CITY STREETS FROM THE L.A. COUNTY ROAD DEPT., DISTRICT OFFICE NO. 1, 1400 JUNE 4 HIGHWAY AND THE CITY OF SOUTH EL MONTE, 1910 OLIVE STREET. SUFFICIENT TO COVER THE COST OF CONSTRUCTION INSPECTION AND RECORD PLANS. APPROVAL OF THIS PLAN BY THE CITY OF SOUTH EL MONTE DOES NOT CONSTITUTE A REPRESENTATION AS TO THE ACCURACY OF THE LOCATION OF OR THE EXISTENCE OR NON-EXISTENCE OF ANY UNDERGROUND UTILITY PIPE, OR STRUCTURE WITHIN THE LIMITS OF THIS PROJECT. THIS NOTE APPLIES TO ALL PAGES. IF WORK IS TO BE DONE IN A STATE HIGHWAY, A PERMIT MUST BE OBTAINED FROM THE STATE OF CALIFORNIA, DIVISION OF HIGHWAYS, 128 SOUTH SPRING STREET, LOS ANGELES, CALIFORNIA.

CITY OF SOUTH EL MONTE, CALIFORNIA  
 JOHN A. LAMBIE, CITY ENGINEER  
 J. D. PARKHURST, CHIEF ENGINEER  
 CO. SAN. DIST. NO. 15

APPROVED BY Richard S. Bunn ASSISTANT SANITATION ENGINEER  
 APPROVED BY Richard S. Bunn OFFICE ENGINEER  
 SUBMITTED BY Richard S. Bunn REGIONAL ENGINEER  
 CHECKED BY Richard S. Bunn REG. C.E. NO. 14074

I.N.

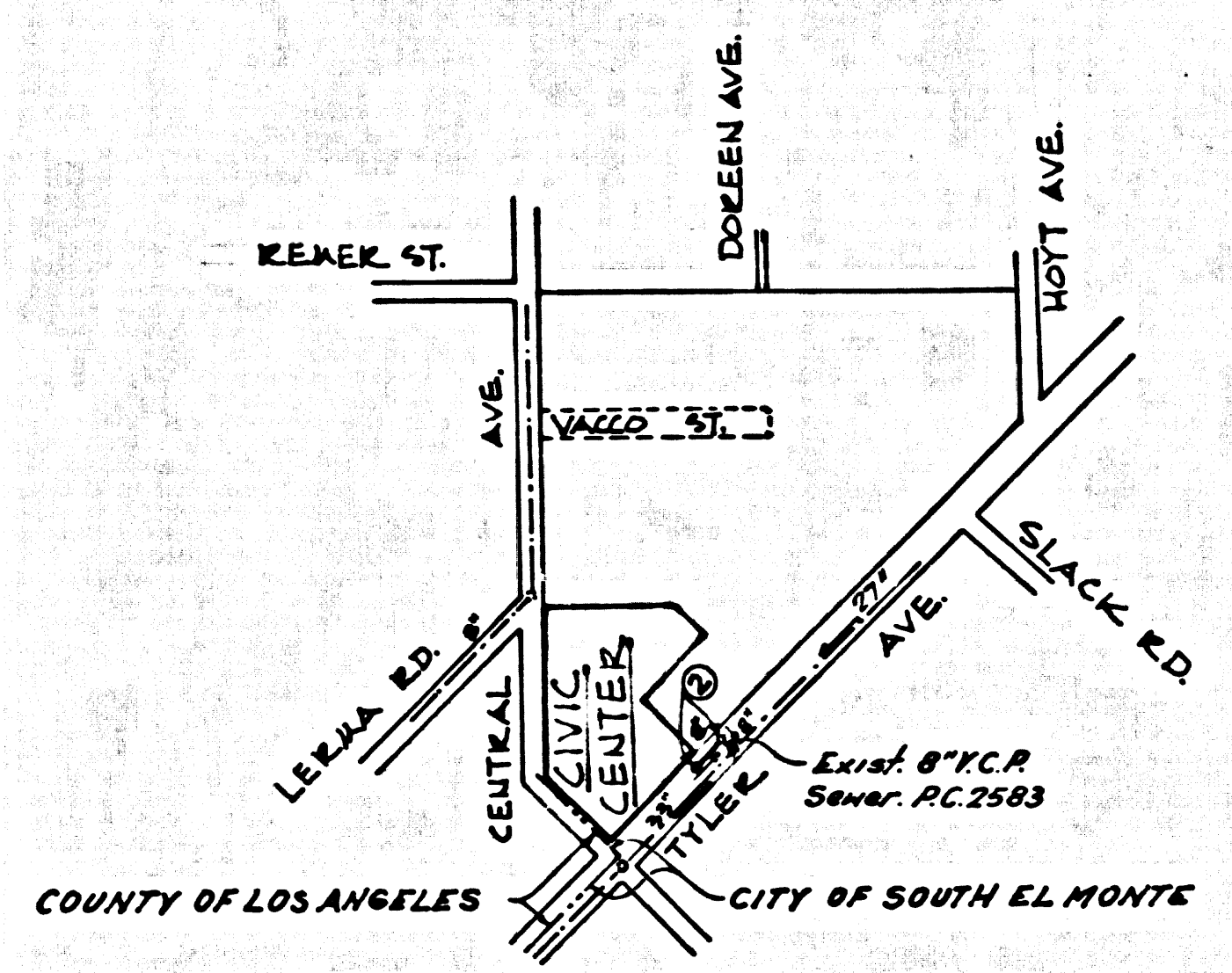
P. C. 7410 PAGE 2  
 COLLECT CHARGES AS INDICATED  
 38709



NO CHARGE FOR CONNECTIONS  
 E.J. BALDWIN'S 2ND SUBDIVISION MR 70-92

COLLECT \$300 PER FT. \$50.00 MINIMUM

B.M. S.G. 1537 ELEV. 243.192  
 1.41 IN N.W. EDGE OF WALK 75 FT.  
 SOUTH 15 FT. EAST OF E. INTERSECTION  
 OF KUSH & CENTRAL  
 WHITTIER QUAD. 1965



CITY OF SOUTH EL MONTE  
 CIVIC CENTER  
 INDEX MAP  
 P.C. 7410  
 SCALE: 1" = 600'

⊙ Indicates Page Number

NO CONNECTIONS FOR THE DISPOSAL OF INDUSTRIAL WASTES SHALL BE MADE TO SEWERS SHOWN ON THESE DRAWINGS WITHOUT WRITTEN PERMISSION FROM THE CHIEF ENGINEER AND GENERAL MANAGER OF THE COUNTY IRRIGATION DISTRICTS.

### SOUTH EL MONTE BLDG. DIST. NO. 5.04

- NOTES:
1. PROVIDE STAKES ON THE PROPERTY LINE OR PROPERTY LINES PRODUCED AT RIGHT ANGLES TO THE SEWER LINE AT THE CENTER LINE OF EACH MANHOLE.
  2. NO REPRESENTATIVE OF THE "CITY" ENGINEER WILL SURVEY OR LAY OUT ANY PORTION OF THE WORK.
  3. THE PRIVATE ENGINEER SHALL FURNISH THE "CITY" ENGINEER WITH GRADE SHEETS AND STATIONING FOR ALL HOUSE LATERALS AND Y BRANCHES AND SHALL PROVIDE STAKES FOR THEM AT THEIR PROPER LOCATIONS WITH STATIONING PLAINLY MARKED. ALL HOUSE LATERALS SHALL BE CONSTRUCTED IN A STRAIGHT ALIGNMENT AT RIGHT ANGLES FROM THE MAIN LINE SEWER EXCEPT AS SHOWN ON THE PLANS. HOUSE LATERALS FROM CHIMNEYS SHALL NOT HAVE AN ANGLE OF LESS THAN 45° WITH THE MAIN LINE SEWER. ANY CHANGE IN ALIGNMENT SHALL BE REQUESTED BY WRITING BY THE PRIVATE ENGINEER.
  4. THE PRIVATE ENGINEER SHALL FURNISH THE HOUSE LATERAL DEPTH AT THE PROPERTY LINE BELOW THE TOP OF CURB ELEVATION FOR EACH HOUSE LATERAL ON THE GRADE SHEET.
  5. NO REVISIONS SHALL BE MADE IN THESE PLANS WITHOUT THE APPROVAL OF THE "CITY" ENGINEER.
  6. THE CONTRACTOR SHALL NOTIFY THE CONSTRUCTION DIVISION BY TELEPHONE, MADISON 9-4747, EXT. 8158, AT LEAST TWENTY-FOUR HOURS BEFORE STARTING ANY WORK UNDER THIS CONTRACT.
  7. MANHOLES SHALL BE BRICK SEWER STRUCTURES PER S-3 PRECAST CONCRETE MANHOLES PER S-8 OR S-6 MAY BE USED AS AN ALTERNATE IN LOCATIONS APPROVED BY THE COUNTY ENGINEER.
  8. USE STANDARD MANHOLE FRAMES AND COVERS, S-18.
  9. MANHOLE TOPS IN UNIMPROVED RIGHTS-OF-WAY TO BE SIX INCHES ABOVE FINISHED GRADE.
  10. USE EXTRA STRENGTH PIPE, ALL PIPE IS STANDARD DEPTH.
  11. USE MECHANICAL COMPRESSION JOINTS FOR ALL S.C.P. JOINTS PER SPEC'S, SECS. 26, 48 & 49.
  12. WHERE EVER GROUND WATER IS ENCOUNTERED DURING THE CONSTRUCTION OF THE SEWERS, THE V.C.P. JOINTS SHALL BE OF JOINT CONSTRUCTION PER S-12, S-13, S-14 & 15 OR MECHANICAL COMPRESSION JOINTS PER SPEC'S, SEC. 26, 48 & 49.
  13. IF A POWER POLE IS WITHIN THREE FEET OF THE SEWER, THE SEWER SHALL BE ENCASED PER S-28 - 29, TWO FEET ON EITHER SIDE FROM THE POINT OF INTERFERENCE.
  14. IF DURING THE COURSE OF CONSTRUCTION IT IS DETERMINED THAT THERE IS LESS THAN FOUR FEET OF COVER OVER THE TOP OF A MAIN LINE OR HOUSE LATERAL V.C.P. SEWER WHICH IS NOT INDICATED ON THE PLANS, THE PIPE SHALL BE ENCASED PER S-28 UNLESS OTHERWISE APPROVED BY THE COUNTY ENGINEER.
  15. HOUSE LATERALS FOR UNIMPROVED RIGHTS-OF-WAY SHALL BE AT LEAST 1.5 FEET BELOW CURB-SIDE WALKS AS SHOWN IN ACCORDANCE WITH PERMITS.
  16. FOR ALLOWABLE LEAKAGE TEST USE FORMER NO. 1000 SPEC. SEC. 54.
  17. ALL STATE AND LOCAL PUBLIC SAFETY ORDINANCES SHALL BE STRICTLY ENFORCED.
  18. WORK IN CITIES OR TOWNS OF HOUSE LATERALS INDICATE 1/8" SHALL BE LAID HORIZONTAL. HOUSE LATERALS SHALL BE CONSTRUCTED WITH 1/8" RISE PER FOOT TO THE PROPERTY LINE.

COLLECT CHARGES AS INDICATED  
 W. G. Jan 1/27/65

PROFILE ALIGNMENT AND GRADE OF P.C. 7410  
 SANITARY SEWERS PAGE 1

TO BE CONSTRUCTED IN  
 CIVIC CENTER SITE  
 CITY OF SOUTH EL MONTE  
 PRIVATE CONTRACT NO. 7410

W.S. 37, B2  
 1 SHEETS, 2 PAGES  
 SCALE: HORIZ. 1" = 40' VERT. 1" = 4' JULY 15, 1965  
 PREPARED IN THE OFFICES OF  
 H.C. VANDEN BOSSCHE AND ASSOCIATES

By: *Robert S. Bosche*  
 REG. C.E. NO. 14074  
 FOR LEGEND SEE PLAN NO. S-1

NOTE:  
 GRADES TO WHICH THIS IMPROVEMENT IS TO BE CONSTRUCTED ARE SHOWN ON PLANS AND PROFILES. GRADE POINTS FOR TOP OF CURB, CENTER LINE OF STREETS, OR CENTER LINE OF ALLEYS ARE SHOWN BY CIRCLES ON PROFILES. AT ALL POINTS BETWEEN DESIGNATED POINTS THE GRADE SHALL BE ESTABLISHED SO AS TO CONFORM TO A STRAIGHT LINE DRAWN BETWEEN SAID DESIGNATED POINTS. ELEVATIONS ARE IN FEET ABOVE U.S.C. & G.S. MEAN LEVEL DATUM OF 1929. THIS DRAWING AND THE DATA HEREON ARE HEREBY MADE A PART OF THE SPECIFICATIONS. WORK SHALL BE CONSTRUCTED ACCORDING TO STANDARD SPECIFICATIONS DATED MAY 25, 1962, ON FILE IN THE OFFICE OF THE "CITY" ENGINEER AND SHALL BE PROSECUTED ONLY IN THE PRESENCE OF THE "CITY" ENGINEER. BEFORE WORK CAN BE STARTED, THE CONTRACTOR MUST OBTAIN A PERMIT TO EXCAVATE IN "CITY" STREETS FROM THE L.A. COUNTY ROAD DEPT., DISTRICT OFFICE NO. 1740 AND A PERMIT FROM THE CITY OF SOUTH EL MONTE, TWO PLUMBER STREETS, SUFFICIENT TO COVER THE COST OF CONSTRUCTION INSPECTION AND RECORD PLANS. APPROVAL OF THIS PLAN BY THE "CITY" OF SOUTH EL MONTE DOES NOT CONSTITUTE A REPRESENTATION AS TO THE ACCURACY OF THE LOCATION OR OF THE EXISTENCE OR NON-EXISTENCE OF ANY UNDERGROUND UTILITY PIPE OR STRUCTURE WITHIN THE LIMITS OF THIS PROJECT. THIS NOTE APPLIES TO ALL PAGES. IF WORK IS TO BE DONE IN A STATE HIGHWAY, A PERMIT MUST BE OBTAINED FROM THE STATE OF CALIFORNIA, DIVISION OF HIGHWAYS, 126 SOUTH SPRING STREET, LOS ANGELES, CALIFORNIA.

CITY OF SOUTH EL MONTE, CALIFORNIA  
 JOHN A. LAMBIE, CITY ENGINEER J. D. PARKHURST, CHIEF ENGINEER  
 CO. SAN. DIST. NO. 15  
 APPROVED BY: *Robert S. Bosche* ASSISTANT SANITATION ENGINEER APPROVED BY: *J. D. Parkhurst* OFFICE ENGINEER  
 SUBMITTED BY: *Robert S. Bosche* REGIONAL ENGINEER  
 CHECKED BY: *John A. Lambie* REG. C.E. NO. 7102

P. 7410 PAGE 2

COLLECT CHARGES AS INDICATED

38709

