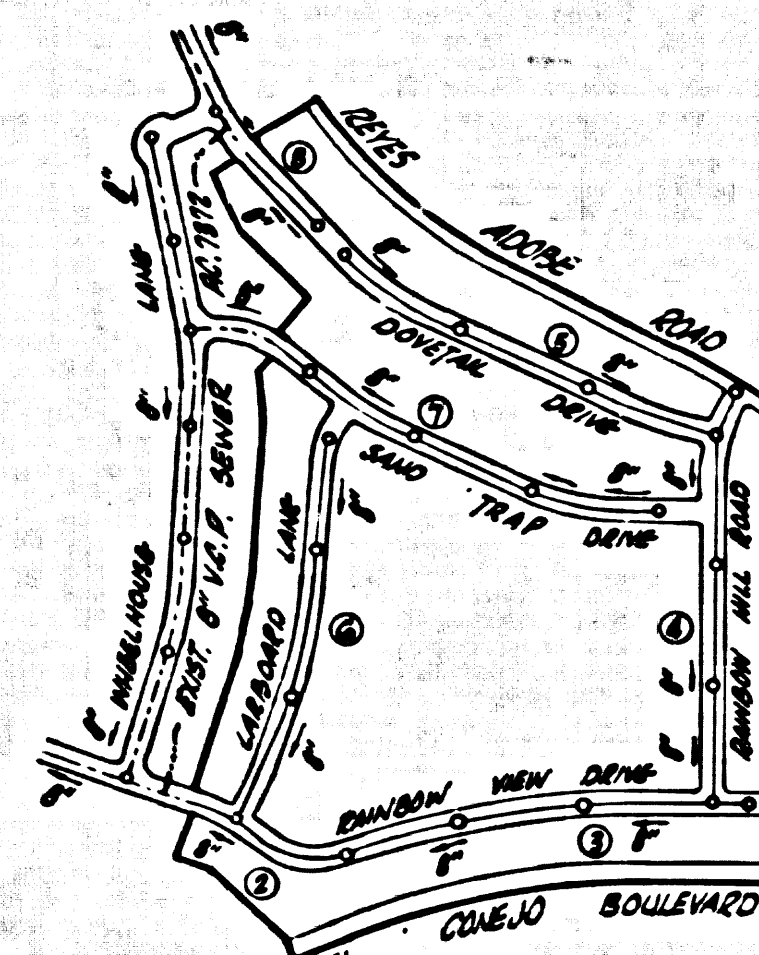


B.M. SY 5638 ELEV. 960.872
 Dr. Cap in core. min. 6" dia. on 9/2
 Ventura Blvd. C.C. 3/4 531-99112.8
 M. W. Cornell Rd.
MALIBU QUAD. 19.60



INDEX MAP
 TRACT No. 23808
 P.C. 7412
 SCALE: 1"=600'
 NOTE:
 NUMBERS IN CIRCLES INDICATE
 PAGE NUMBERS.

DOUBLE SCALE
CALABASAS BLDG. DIST. NO. 9.1

PROFILE ALIGNMENT AND GRADE OF **P.C. 7412**
SANITARY SEWERS PAGE 1
 TO BE CONSTRUCTED IN
TRACT No. 23808

PRIVATE CONTRACT NO. 7412

W.S. 93
 4 SHEETS, 8 PAGES
 SCALE: VERT. 1"=8' JULY, 1965 38444
 HORIZ. 1"=40'
 PREPARED IN THE OFFICES OF
M. INTIRE & QUIROS, INC.
 BY: *J.M. Casaday*
 REG. C. E. NO. 14827
 FOR LEGEND SEE PLAN NO. S-1

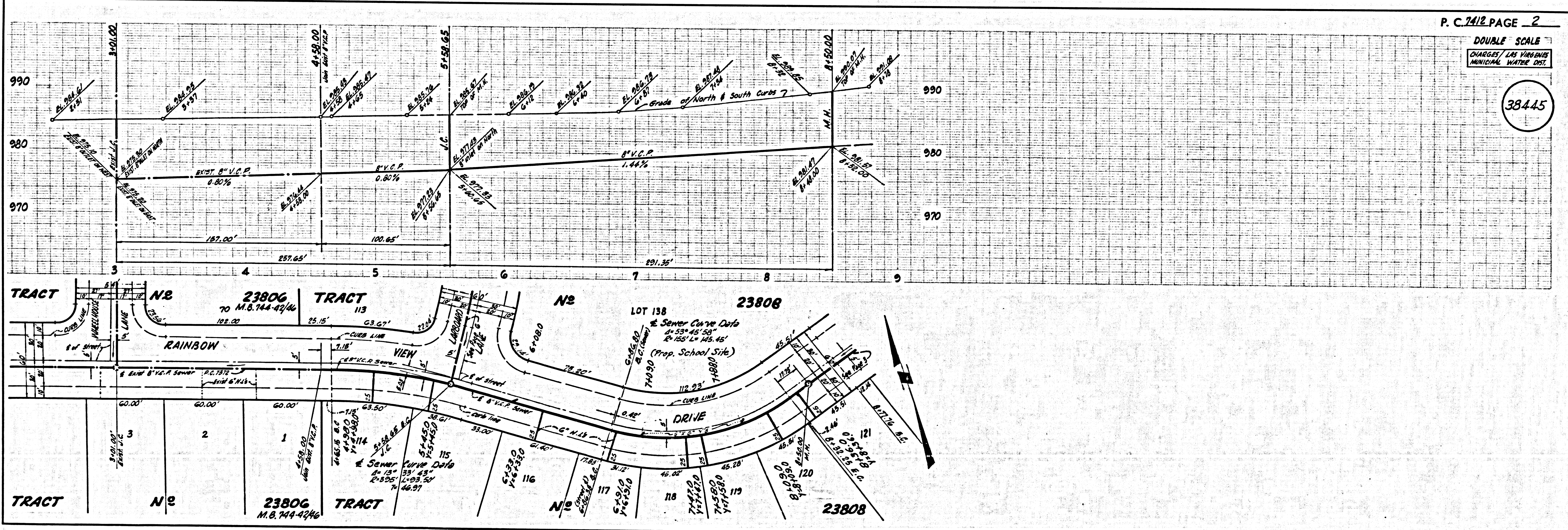
- NOTES:
1. PROFILE STAKES ON THE PROPERTY LINE OR PROPERTY LINES PRODUCED AT RIGHT ANGLES TO THE SEWER LINE AT THE CENTER LINE OF EACH MANHOLE.
 2. NO REPRESENTATIVE OF THE COUNTY ENGINEER WILL SURVEY OR LAY OUT ANY PORTION OF THE WORK.
 3. THE PRIVATE ENGINEER SHALL FURNISH THE COUNTY ENGINEER WITH GRADE SHEETS AND STATIONING FOR ALL HOUSE LATERALS AND MANHOLES AND SHALL PROVIDE STAKES FOR THEM AT THESE PROPER LOCATIONS WITH STATIONING PLAINLY MARKED. ALL HOUSE LATERALS SHALL BE CONSTRUCTED IN A STRAIGHT ALIGNMENT AT RIGHT ANGLES FROM THE MAIN LINE SEWER EXCEPT AS SHOWN ON THE PLANS. HOUSE LATERALS FROM CHIMNEYS SHALL NOT HAVE AN ANGLE OF LESS THAN 45° WITH THE MAIN LINE SEWER. ANY CHANGE IN ALIGNMENT SHALL BE REQUESTED BY WRITING BY THE PRIVATE ENGINEER.
 4. THE PRIVATE ENGINEER SHALL FURNISH THE HOUSE LATERAL DEPTH AT THE PROPERTY LINE BELOW THE TOP OF CURB ELEVATION FOR EACH HOUSE LATERAL ON THE GRADE SHEET.
 5. NO REVISIONS SHALL BE MADE IN THESE PLANS WITHOUT THE APPROVAL OF THE COUNTY ENGINEER.
 6. THE CONTRACTOR SHALL NOTIFY THE CONSTRUCTION DIVISION BY TELEPHONE, MADISON 9-6747, EXT. 8888, AT LEAST TWENTY-FOUR HOURS BEFORE STARTING ANY WORK UNDER THIS CONTRACT.
 7. MANHOLES SHALL BE BRICK SEWER STRUCTURES PER S-1 PRECAST CONCRETE MANHOLES PER S-1 OR S-6 MAY BE USED AS AN ALTERNATE IN LOCATIONS APPROVED BY THE COUNTY ENGINEER.
 8. USE STANDARD MANHOLE FRAMES AND COVERS, S-6 EXCEPT AS NOTED.
 9. MANHOLE TOPS IN UNIMPROVED AREAS SHALL BE TO THE SURFACE ABOVE FINISHED GRADE.
 10. USE EXTRA STRENGTH PIPE. ALL PIPE IS STANDARD DEPTH EXCEPT AS NOTED.
 11. USE MECHANICAL COMPRESSION JOINTS FOR ALL V.C.P. JOINTS PER SPECS., SECS. 34, 41 & 49.
 12. WHERE EVER BROKEN WATER IS ENCOUNTERED DURING THE CONSTRUCTION OF THE SEWER, THE V.C.P. JOINTS SHALL BE OF JOINT COMPOUND PER SPECS., SECS. 33 & 48, OR MECHANICAL COMPRESSION JOINTS PER SPECS., SEC. 34.
 13. IF A POWER POLE IS WITHIN THREE FEET OF THE SEWER, THE SEWER SHALL BE ENCASED, PER S-21 TWO FEET ON EACH SIDE FROM THE POINT OF INTERFERENCE.
 14. IF DURING THE COURSE OF CONSTRUCTION IT IS DETERMINED THAT THERE IS LESS THAN FOUR FEET OF COVER OVER THE TOP OF A MAIN LINE OR HOUSE LATERAL V.C.P. SEWER WHICH IS NOT INDICATED ON THE PLANS, THE PIPE SHALL BE ENCASED PER S-21 UNLESS OTHERWISE APPROVED BY THE COUNTY ENGINEER.
 15. HOUSE LATERALS TO BE CONSTRUCTED WITH INVERTS AT PROPERTY LINE... FEET BELOW CURB GRADE EXCEPT AS NOTED.
 16. INSURANCE ALL TRENCHES WITHIN FIVE FEET FROM THE L.A. COUNTY ROAD DEPT. OR CALIFORNIA STATE HIGHWAY ENCROACHMENTS BY ACCORDANCE WITH PERMITS.
 17. FOR ALLOWABLE LEAKAGE TEST USE FORMULA NO. 1, R. 100000 SPECS., SEC. 34.
 18. ALL STOPS AND WORK TRENCH SAFETY BARRIERS SHALL BE EXACTLY ENFORCED.
 19. CONSTRUCTION IN FILLED AREAS:
 - a. AN ACCURATE CERTIFICATION OF COMPACTION TESTS RESULTS SHALL BE SUBMITTED TO THE CONSTRUCTION DIVISION. COMPACTION TESTS ARE TO BE MADE IN ACCORDANCE WITH A.S.T.M. STANDARD METHOD OF TEST D-1557 METHOD.
 - b. NO CONSTRUCTION IS PERMITTED IN THE FILLED AREAS UNLESS THE RELATIVE DENSITY OF COMPACTION IS LESS THAN 85%.
 - c. IF THE RELATIVE DENSITY OF COMPACTION IS LESS THAN 80% ALL MAIN LINE AND HOUSE LATERALS SHALL BE ENCASED PER S-21 OR HAVE A SPECIAL BASE COURSE PER S-21 SPECIAL MANHOLE BASE PER S-21 AS REQUIRED.
 - d. IF THE RELATIVE DENSITY OF COMPACTION IS 80% OR GREATER THE SPECIAL PROVISIONS IN C ARE NOT REQUIRED.

NOTE:
 GRADES TO WHICH THIS IMPROVEMENT IS TO BE CONSTRUCTED ARE SHOWN ON PLANS AND PROFILE. GRADE POINTS FOR TOP OF CURB, CENTER LINE OF STREETS, OR CENTER LINE OF ALLEYS ARE SHOWN BY CIRCLES ON PROFILES. AT ALL POINTS BETWEEN DESIGNATED POINTS THE GRADE SHALL BE ESTABLISHED SO AS TO CONFORM TO A STRAIGHT LINE DRAWN BETWEEN SAID DESIGNATED POINTS. ELEVATIONS ARE IN FEET ABOVE U.S.C. & G.S. SEA LEVEL DATUM OF 1929.
 THIS DRAWING AND THE DATA HEREON ARE HEREBY MADE A PART OF THE SPECIFICATIONS.
 BEFORE WORK CAN BE STARTED, THE CONTRACTOR MUST OBTAIN A PERMIT TO EXCAVATE IN COUNTY STREETS FROM THE L.A. COUNTY ROAD DEPT., DISTRICT OFFICE NO. 1000 AND PAY A FEE TO THE COUNTY ENGINEER, ROOM 300, COUNTY ENGINEERING BUILDING, THE WEST SECOND STREET COR. CALIF. ST. (CANTONMENT) INTERSECTION, SPECIAL OFFICE, SUFFICIENT TO COVER THE COST OF CONSTRUCTION INSPECTION AND RECORD PLANS.
 APPROVAL OF THIS PLAN BY THE COUNTY OF LOS ANGELES DOES NOT CONSTITUTE A REPRESENTATION AS TO THE ACCURACY OF THE LOCATION OF OR THE EXISTENCE OR NON-EXISTENCE OF ANY UNDERGROUND UTILITY PIPE, OR STRUCTURE WITHIN THE LIMITS OF THIS PROJECT. THIS NOTE APPLIES TO ALL PAGES.
 IF WORK IS TO BE DONE ON A STATE HIGHWAY, A PERMIT MUST BE OBTAINED FROM THE STATE OF CALIFORNIA, DIVISION OF HIGHWAYS, THE SOUTH SPRING STREET, LOS ANGELES, CALIFORNIA.

COUNTY OF LOS ANGELES, CALIFORNIA
 JOHN A. LAMBIE, COUNTY ENGINEER
 LAS VIRGENES MUNICIPAL WATER DISTRICT
 APPROVED BY: *[Signature]* ASSISTANT SANITATION ENGINEER
 APPROVED BY: *[Signature]* CIVIL ENGINEER 1952S
 SUBMITTED BY: *[Signature]* PROFESSIONAL ENGINEER
 CHECKED BY: *[Signature]* REG. C.E. NO. 12652

COLLECT CHARGES AS INDICATED
John N. McIlwain 8/20/65

J.N. 0366.04



P.C. 7412 PAGE 2
 DOUBLE SCALE
 CHARGES/LAS VIRGENES MUNICIPAL WATER DIST.
 38445

