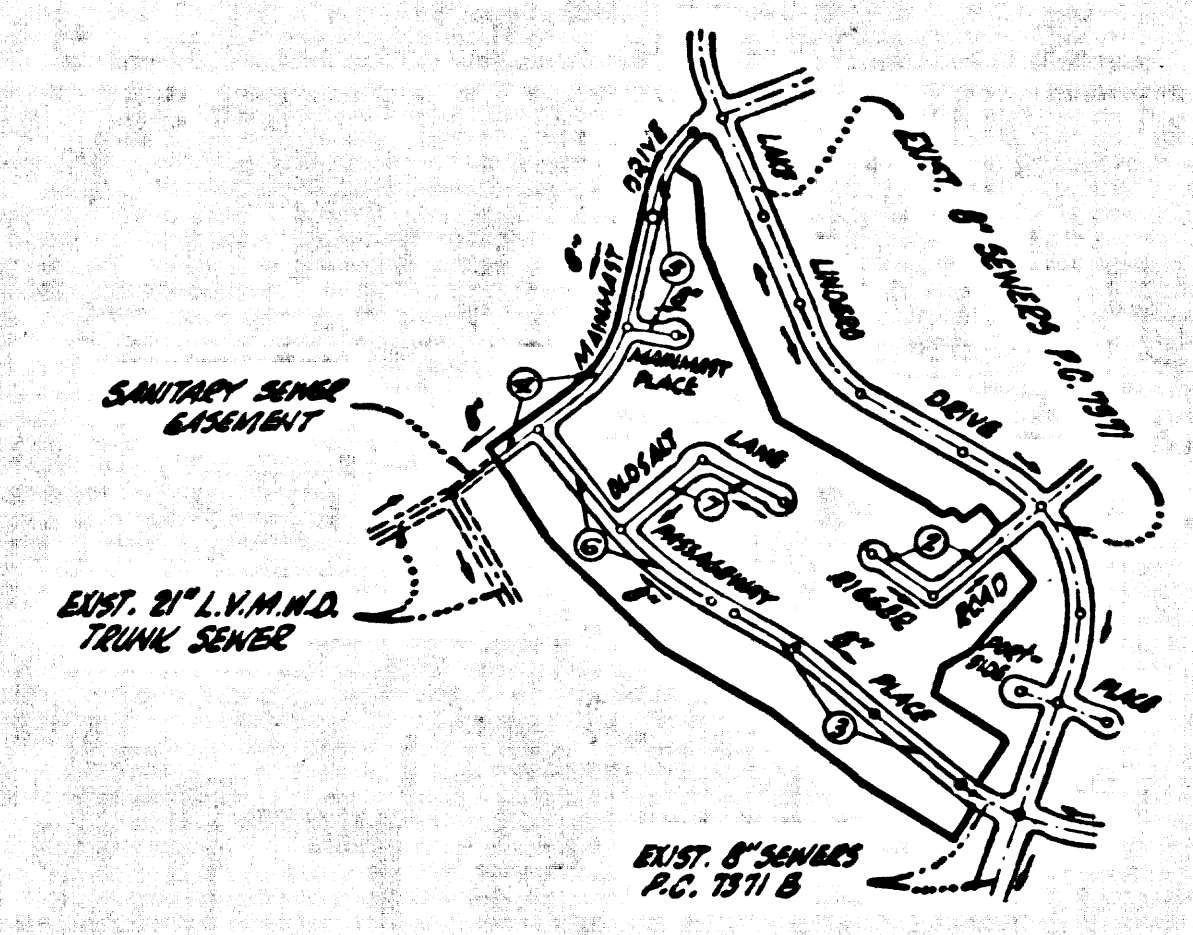


B.M. SY 5638 ELEV. 960.472  
 Br. Cap in conc. man. 6" dia. on 1/4 Ventura  
 Blvd. E.C. Sta 531+29.11 ± 34 mi W.  
 Cornell Rd.  
 MALIBU COND. 1960



INDEX MAP  
 TRACT No. 23809  
 P.C. 7413  
 Scale: 1" = 600'  
 Note: Numbers in circles indicate  
 Page Numbers

REVISION: 8-30-71  
 PAGE 5-B - REVISED LEGAL ON  
 INSIDE OF MAINWALL DR. N. OF  
 SLUGS CIRCLE FROM TR. NO. 23809  
 TO PAR. MAP NO. 2278.  
 APPROVED: *[Signature]*  
 OFFICE OF COUNTY ENGINEER

REVISION: 2-23-66  
 PAGE 4 - ADD CHIMNEY BASE AND RELOCATE Y'S  
 AND H.L.'S TO N.W. CORNER 215' X 125'  
 PAGE 5-B - EXTEND MAIN LINE 35' ABOVE M.H. &  
 18" DIA. TO HYDROL. RELOCATE H.L.'S TO WEST  
 APPROVED: *[Signature]*  
 OFFICE OF COUNTY ENGINEER

REVISION 12-8-65  
 Page 4 Add I.M.L. & 1" rise and  
 relocate M.L. & Y's to north  
 Page 5 Move upper M.H. from 11425.00  
 to 10725.00. Relocate M.L.'s to West  
 APPROVED: *[Signature]*  
 Office of County Engineer

DOUBLE SCALE  
 CALABASAS BLDG. DIST. NO. 9.1

- NOTES:
1. PROFILE GRADES ON THE PROPERTY LINE OR PROPERTY LINES PRODUCED AT RIGHT ANGLES TO THE SEWER LINE AT THE CENTER LINE OF EACH MANHOLE.
  2. NO REPRESENTATIVE OF THE COUNTY ENGINEER WILL SURVEY OR LAY OUT ANY PORTION OF THE WORK.
  3. THE PRIVATE ENGINEER SHALL FURNISH THE COUNTY ENGINEER WITH GRADE SHEETS AND STATIONING FOR ALL HOUSE LATERALS AND Y BRANCHES AND SHALL PROVIDE GRADES FOR TRAILS AT THEIR PROPER LOCATIONS WITH STATIONING PLAINLY MARKED. ALL HOUSE LATERALS SHALL BE CONSTRUCTED IN A STAGMATIC ALIGNMENT AT RIGHT ANGLES FROM THE MAIN LINE SEWER EXCEPT AS SHOWN ON THE PLANS. HOUSE LATERALS FROM CHIMNEYS SHALL NOT HAVE AN ANGLE OF LESS THAN 45° WITH THE MAIN LINE SEWER. ANY CHANGE IN ALIGNMENT SHALL BE INDICATED BY NOTES BY THE PRIVATE ENGINEER.
  4. THE PRIVATE ENGINEER SHALL FURNISH THE HOUSE LATERAL BATHS AT THE PROPERTY LINE BELOW THE TOP OF CURB RAVINATION FOR EACH HOUSE LATERAL ON THE GRADE SHEET.
  5. NO REVISIONS SHALL BE MADE IN THESE PLANS WITHOUT THE APPROVAL OF THE COUNTY ENGINEER.
  6. THE CONTRACTOR SHALL NOTIFY THE CONSTRUCTION DIVISION BY TELEPHONE, HANDBOOK 9-27-67, EXT. 8888, AT LEAST TWENTY-FOUR HOURS BEFORE STARTING ANY WORK UNDER THIS CONTRACT.
  7. MANHOLES SHALL BE BRICK SEWER STRUCTURES PER S-3 PRECAST CONCRETE MANHOLES PER S-3 OR S-5 MAY BE USED AS AN ALTERNATE IN LOCATIONS APPROVED BY THE COUNTY ENGINEER.
  8. USE STANDARD MANHOLE FRAMES AND COVERS, S-3 EXCEPT AS NOTED.
  9. MANHOLE TOPS IN UNIMPROVED AREAS OF WAYS TO BE SEE HEREIN ABOVE FINISHED GRADE.
  10. USE EXTRA STRENGTH PIPE. ALL PIPE IS STANDARD DEPTH EXCEPT AS NOTED.
  11. USE MECHANICAL COMPRESSION JOINTS FOR ALL V.C.P. JOINTS PER SPEC., SECT. 34, 40 & 41.
  12. WHERE EVER GROUND WATER IS ENCOUNTERED DURING THE CONSTRUCTION OF THE SEWERS, THE V.C.P. JOINTS SHALL BE OF JOINT COMPOUND PER SPEC., SECT. 33 & 44, OR MECHANICAL COMPRESSION JOINTS PER SPEC., SEC. 34.
  13. IF A POWER POLE IS WITHIN THREE FEET OF THE SEWER, THE SEWER SHALL BE SHICARD, PER S-25 TWO FEET ON EACH SIDE FROM THE POINT OF INTERFERENCE.
  14. IF DURING THE COURSE OF CONSTRUCTION IT IS DETERMINED THAT THERE IS LESS THAN FOUR FEET OF COVER OVER THE TOP OF A MAIN LINE OR HOUSE LATERAL V.C.P. SEWER WHICH IS NOT INDICATED ON THE PLANS, THE PIPE SHALL BE SHICARD PER S-25 UNLESS OTHERWISE APPROVED BY THE COUNTY ENGINEER.
  15. HOUSE LATERALS TO BE CONSTRUCTED WITH INVERTS AT PROPERTY LINE ... FEET BELOW CURB GRADE EXCEPT AS NOTED.
  16. RESURFACE ALL TRENCHES WITHIN PAVED AREAS TO MEET L.A. COUNTY ROAD DEPT. OR CALIFORNIA STATE HIGHWAY REQUIREMENTS IN ACCORDANCE WITH PERMITS.
  17. FOR ALLOWABLE LEAKAGE TEST USE FORMULA NO. 2, SPEC., SEC. 54.
  18. ALL STATE AND LOCAL TRENCH SAFETY DEVICES WILL BE RIGIDLY ENFORCED.
  19. CONSTRUCTION IN FILLED AREAS:
    - a. IF ACCIDENTALLY CONSTRUCTION OF CONSTRUCTION TESTS RESULTS SHALL BE SUBMITTED TO THE CONSTRUCTION DIVISION, CONSTRUCTION TESTS ARE TO BE MADE IN ACCORDANCE WITH A.S.T.M. STANDARD METHOD OF TEST D-528-63T.
    - b. NO CONSTRUCTION IS PERMITTED IN THE FILLED AREAS WHERE THE RELATIVE DENSITY OF CONSTRUCTION IS LESS THAN 90%.
    - c. IF THE RELATIVE DENSITY OF CONSTRUCTION IS LESS THAN 90% ALL MAIN LINE AND HOUSE LATERALS SHALL BE SHICARD PER S-25 OR HAVE A SPECIAL BASE COURSE PER S-25 SPECIAL MANHOLE BASE PER S-25 ARE REQUIRED.
    - d. IF THE RELATIVE DENSITY OF CONSTRUCTION IS 90% OR GREATER THE SPECIAL PROVISIONS IN C ARE NOT REQUIRED.

COLLECTIVE CHARGES  
 AS INDICATED  
*[Signature]*

PROFILE ALIGNMENT AND GRADE OF  
 SANITARY SEWERS PAGE 1  
 TO BE CONSTRUCTED IN

TRACT No. 23809  
 PRIVATE CONTRACT NO. 7413

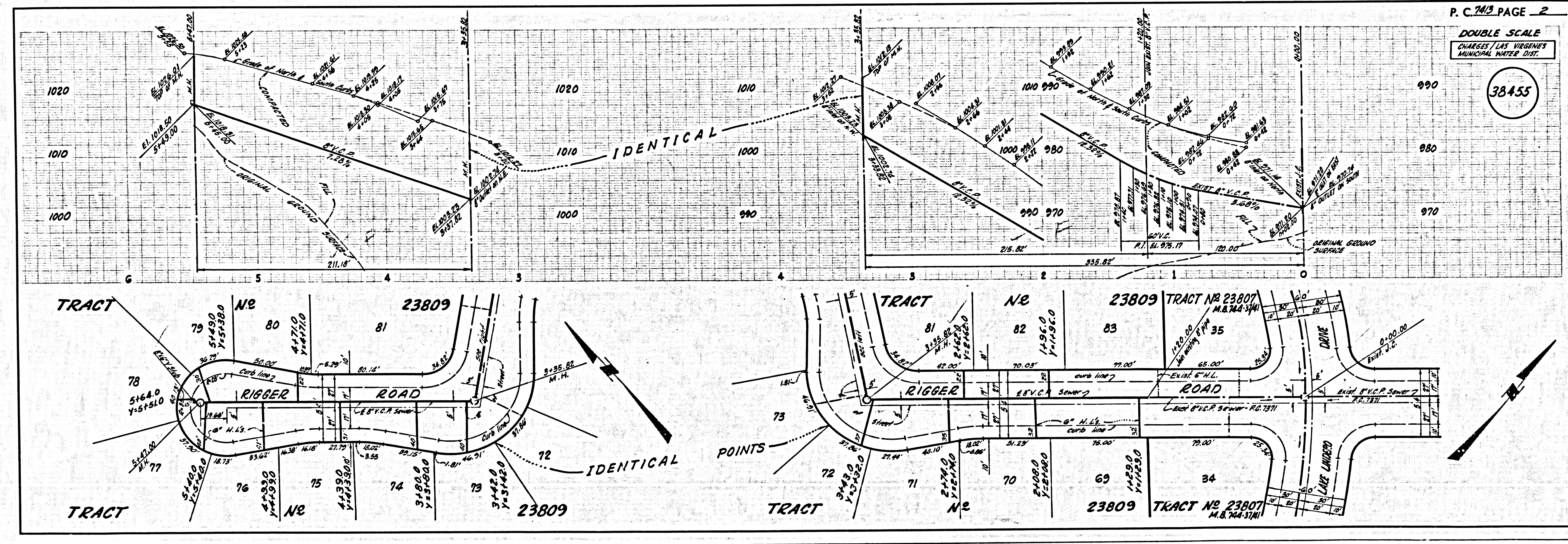
W.S.93  
 4 SHEETS, 7 PAGES  
 SCALE: VERT. 1" = 8'  
 HORIZ. 1" = 40'  
 JULY, 1965  
 38454

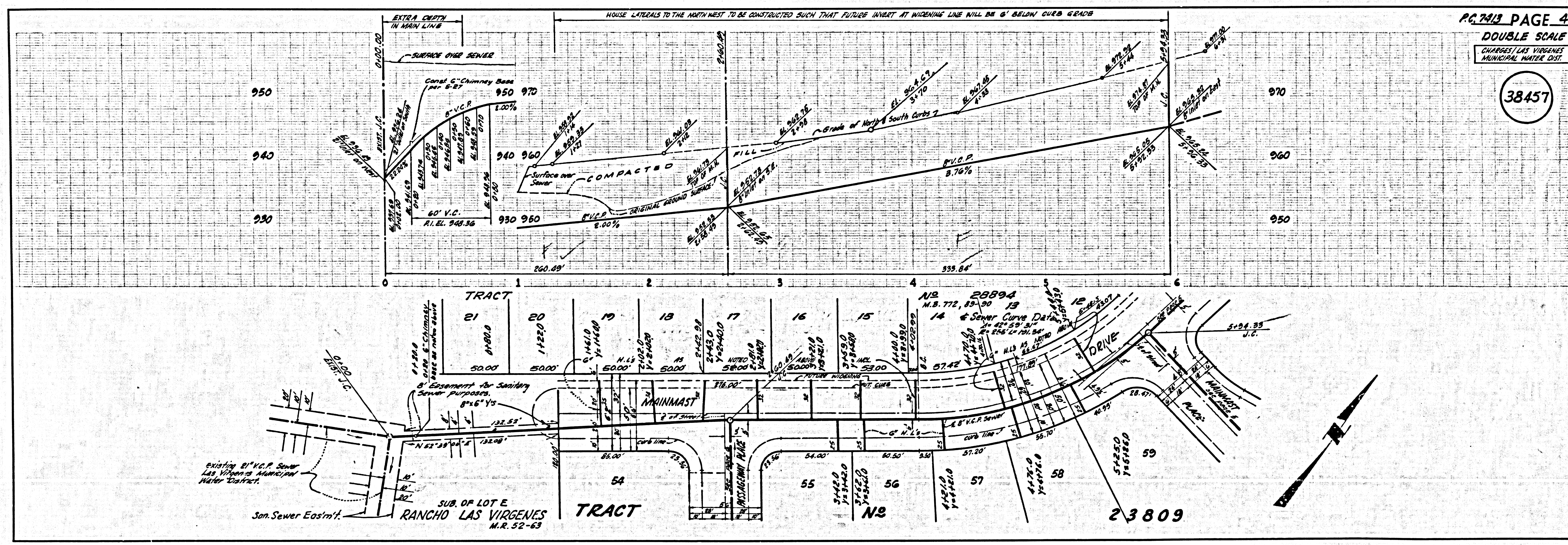
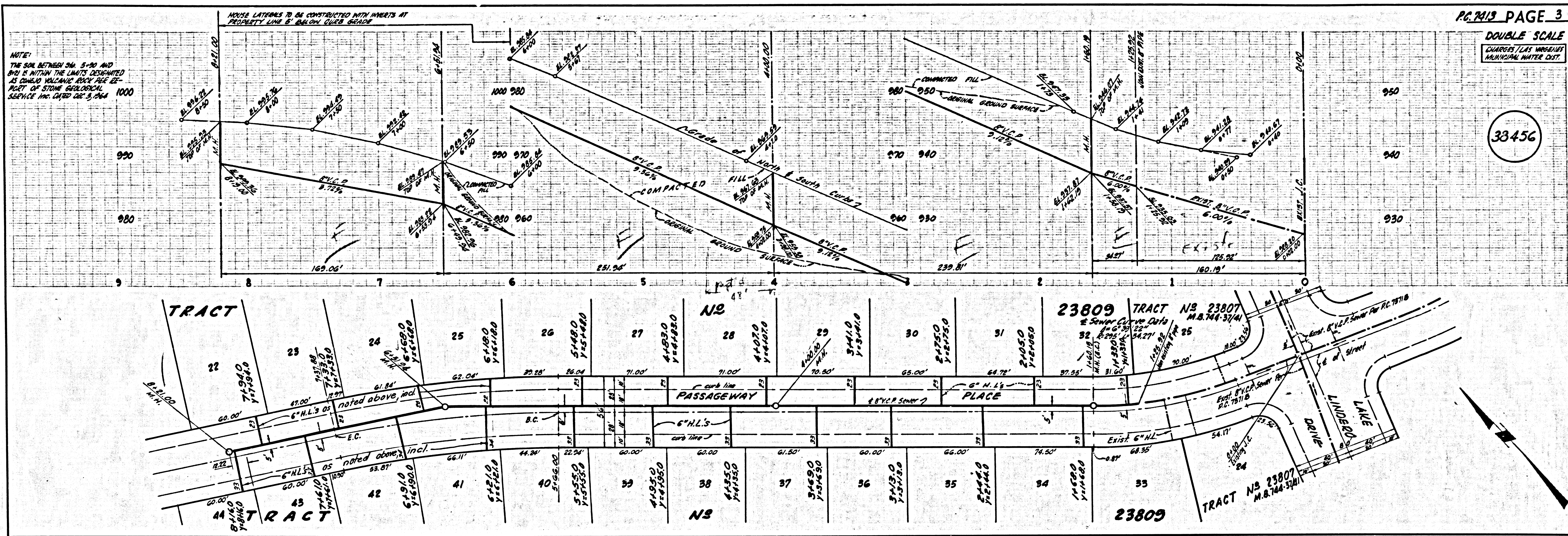
PREPARED IN THE OFFICES OF  
 MEINTIRE & QUIROS, INC.  
 14227  
 REG. C. & NO. 14227

NOTE:  
 GRADES TO WHICH THIS IMPROVEMENT IS TO BE CONSTRUCTED ARE SHOWN ON PLANS AND PROFILES. GRADE POINTS FOR TOP OF CURBS, CENTER LINE OF STREETS, OR CENTER LINE OF ALLEYS ARE SHOWN BY CIRCLES ON PROFILES. AT ALL POINTS BETWEEN DESIGNATED POINTS THE GRADE SHALL BE ESTABLISHED AS TO CORRESPOND TO A STRAIGHT LINE BETWEEN SAID DESIGNATED POINTS. ELEVATIONS ARE IN FEET ABOVE U.S.C. & G.S. SEA LEVEL DATUM OF 1929. THE DRAWINGS AND THE DATA HEREON ARE HEREBY MADE A PART OF THE SPECIFICATIONS. WORK SHALL BE CONSTRUCTED ACCORDING TO STANDARD SPECIFICATIONS DATED 12/12/52, ON FILE IN THE OFFICE OF THE COUNTY ENGINEER AND SHALL BE MODIFIED ONLY IN THE PRESENCE OF THE COUNTY ENGINEER. BEFORE WORK CAN BE STARTED, THE CONTRACTOR MUST OBTAIN A PERMIT TO EXCAVATE IN COUNTY STREETS FROM THE L.A. COUNTY PUBLIC WORKS DEPARTMENT AND PAY TO THE COUNTY ENGINEER, ROOM 300, COUNTY ENGINEERING BUILDING, 100 WEST SECOND STREET OR ROOM 102207 - 1907/1908 REGIONAL OFFICE, SUFFICIENT TO COVER THE COST OF CONSTRUCTION INSPECTION AND RECORD PLANS. APPROVAL OF THIS PLAN BY THE COUNTY OF LOS ANGELES DOES NOT CONSTITUTE A REPRESENTATION AS TO THE ACCURACY OF THE LOCATION OR OF THE EXISTENCE OR NON-EXISTENCE OF ANY UNDERGROUND UTILITY PIPE, OR STRUCTURE WITHIN THE LIMITS OF THE PROJECT. THIS NOTE APPLIES TO ALL PAGES.

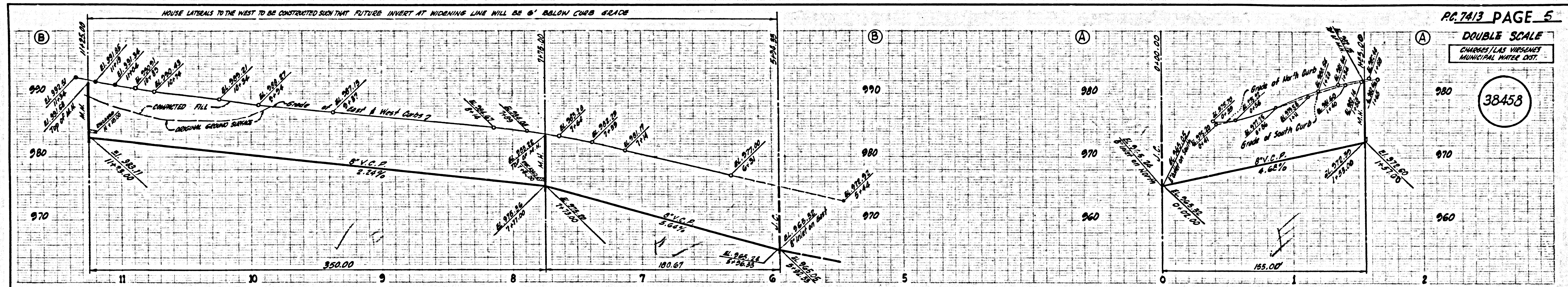
COUNTY OF LOS ANGELES, CALIFORNIA  
 JOHN A. LAMBIE, COUNTY ENGINEER  
 APPROVED BY: *[Signature]*  
 ASSISTANT SANITATION ENGINEER  
 SUBMITTED BY: *[Signature]*  
 REGIONAL ENGINEER  
 CHECKED BY: *[Signature]*  
 REG. C.E. NO. 10653

J.N. 0366.05



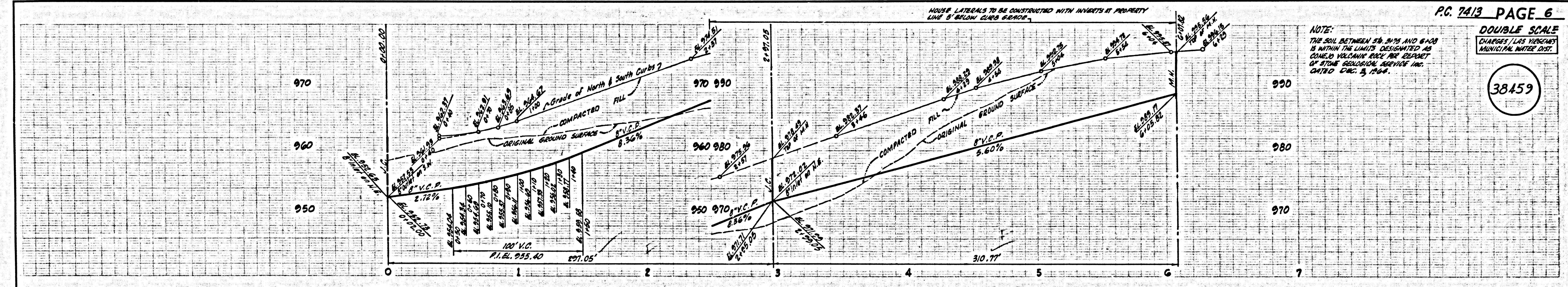
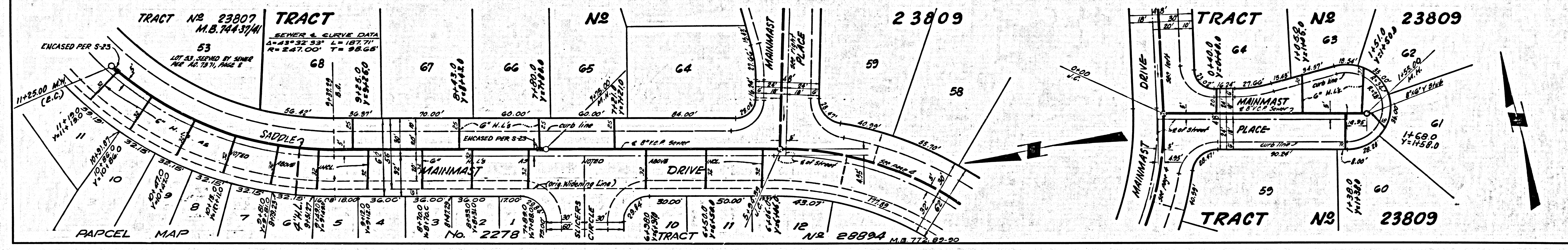


© 2015 SAN JOSE PUBLIC UTILITIES



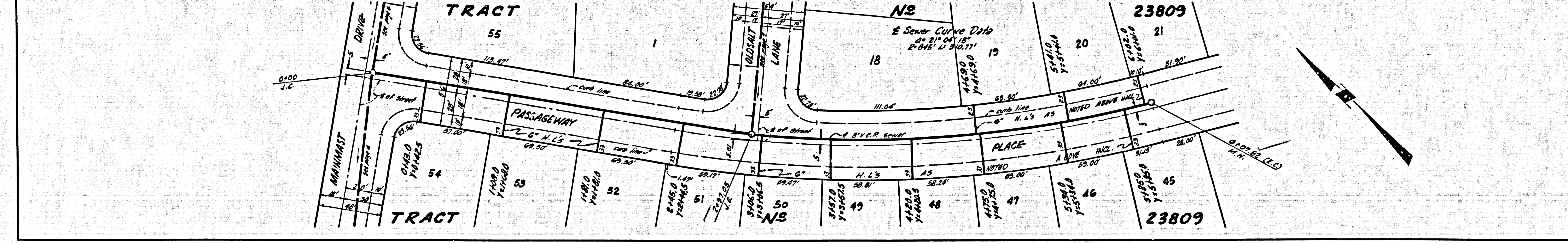
PC 7413 PAGE 5  
 DOUBLE SCALE  
 CHANGES / LAS VERGUES  
 MUNICIPAL WATER DIST.

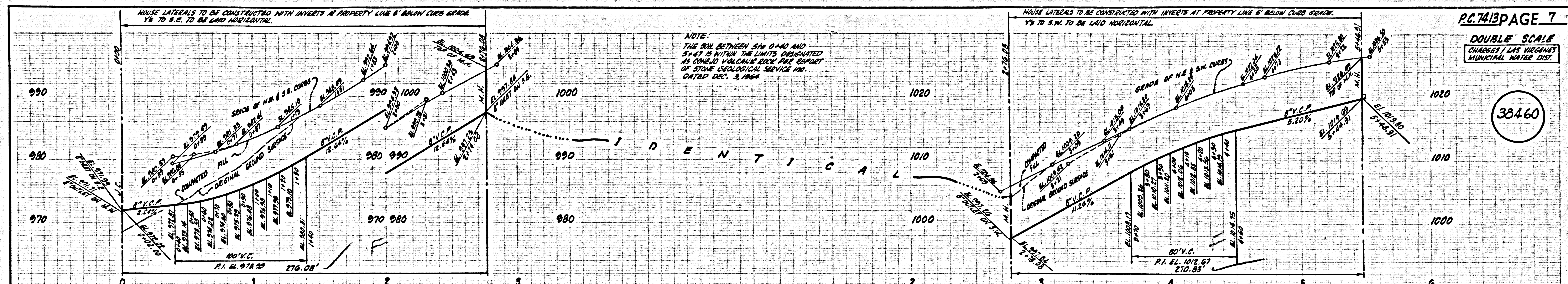
38458



PC 7413 PAGE 6  
 DOUBLE SCALE  
 CHANGES / LAS VERGUES  
 MUNICIPAL WATER DIST.

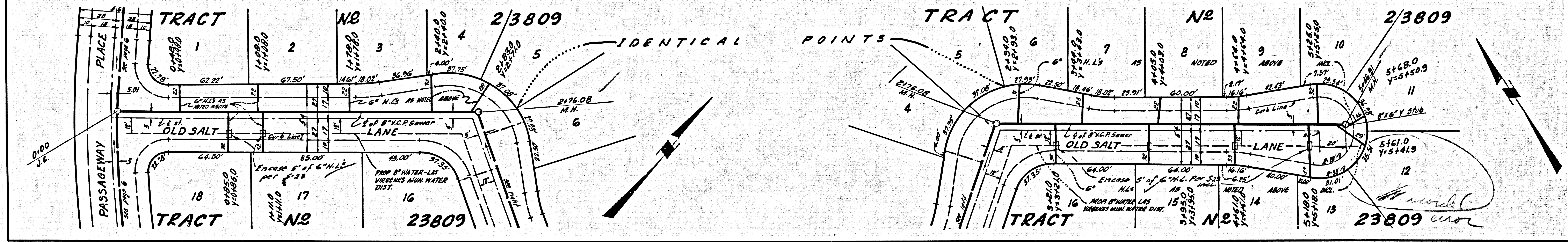
38459





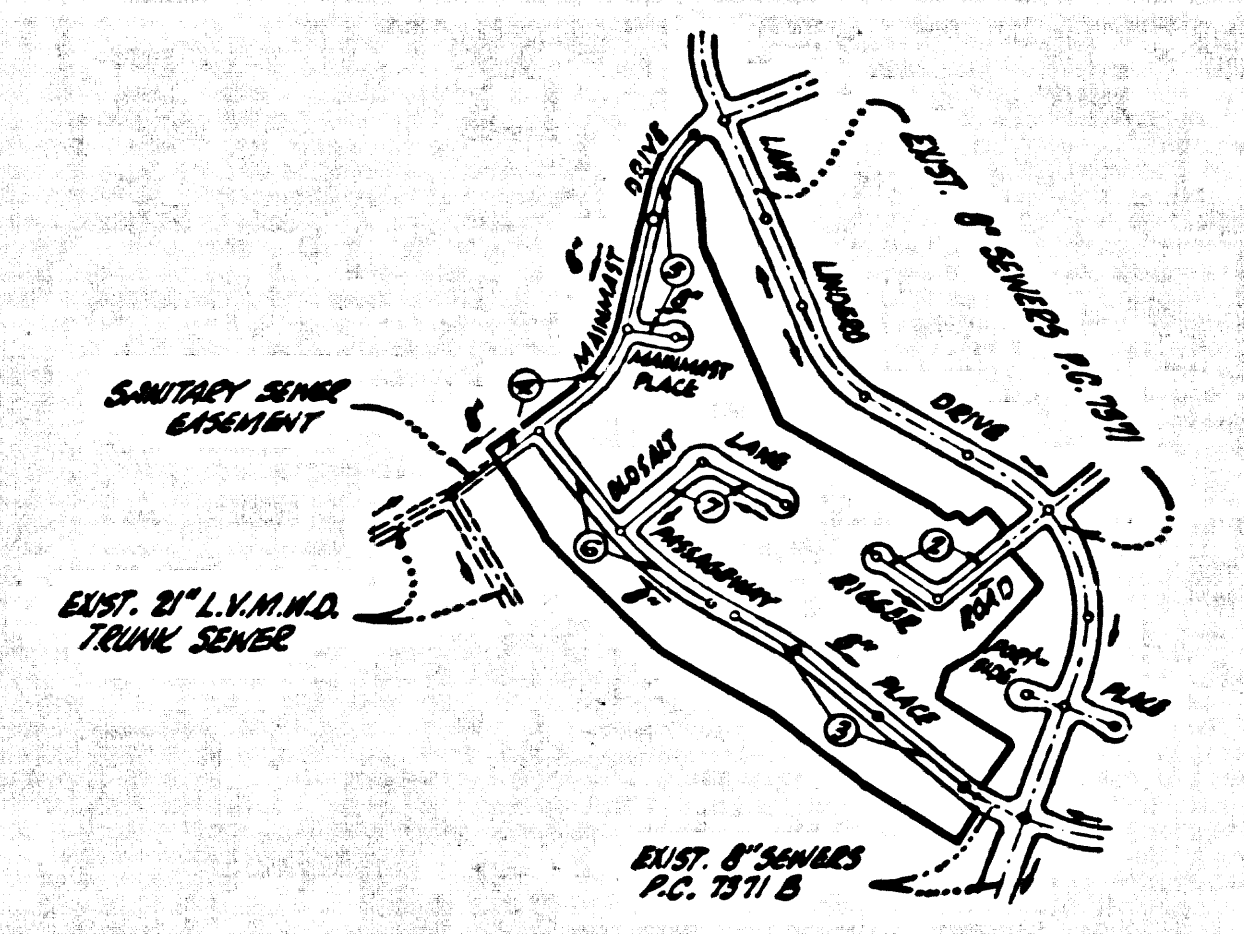
P.C. 7413 PAGE 7  
 DOUBLE SCALE  
 CHARGES / LAS VIRGENES MUNICIPAL WATER DIST.  
 38460

NOTE:  
 THE SOIL BETWEEN 514 0+40 AND  
 514+41 IS WITHIN THE LIMITS DESIGNATED  
 AS LIQUEFIED VOLCANIC SAND BY THE REPORT  
 OF STATE GEOLOGICAL SERVICE NO.  
 041280 DEC. 3, 1964



PAGE

B.M. SY 5638 ELEV. 960.472  
 Br. Cap in conc. man. 6" dia. on St. Ventura  
 Blvd. E.C. Sta. 53+93.11±2.21 mi W.  
 Cornell Rd.  
 MALIBU COND. 1960



INDEX MAP  
 TRACT NO 23809  
 P.C. 7413  
 Scale: 1"=600'  
 Note: Numbers in circles indicate  
 Page Numbers

### DOUBLE SCALE CALABASAS BLDG. DIST. NO. 9.1

PROFILE ALIGNMENT AND GRADE OF **P.C. 7413**  
**SANITARY SEWERS PAGE 1**  
 TO BE CONSTRUCTED IN

**TRACT NO 23809**  
**PRIVATE CONTRACT NO. 7413**

W.S. 93  
 4 SHEETS, 7 PAGES  
 SCALE: VERT. 1"=8'  
 HORIZ. 1"=40'  
 JULY, 1965  
 PREPARED IN THE OFFICES OF

**MEINTIRE & QUIROS, INC.**  
 REG. C. E. NO. 12297

FOR LEGEND SEE PLAN NO. S-1

NOTE:  
 GRADES TO WHICH THIS IMPROVEMENT IS TO BE CONSTRUCTED ARE SHOWN ON PLANS AND PROFILES. GRADE POINTS FOR TOP OF CURBS, CENTER LINE OF STREETS, OR CENTER LINE OF ALLEYS ARE SHOWN BY CIRCLES ON PROFILES. AT ALL POINTS BETWEEN DESIGNATED POINTS THE GRADE SHALL BE ESTABLISHED AS TO CORRESPOND TO A STRAIGHT LINE DRAWN BETWEEN SAID DESIGNATED POINTS. ELEVATIONS ARE IN FEET ABOVE U.S.C. & G.S. SEA LEVEL DATUM OF 1929. THE DRAWINGS AND THE DATA HEREON ARE HEREBY MADE A PART OF THE SPECIFICATIONS. WORK SHALL BE CONSTRUCTED ACCORDING TO STANDARD SPECIFICATIONS DATED 12/27/56, ON FILE IN THE OFFICE OF THE COUNTY ENGINEER AND SHALL BE PROSECUTED ONLY IN THE PRESENCE OF THE COUNTY ENGINEER. BEFORE WORK CAN BE STARTED, THE CONTRACTOR MUST OBTAIN A PERMIT TO EXCAVATE IN COUNTY STREETS FROM THE L.A. COUNTY ROAD DEPT., DISTRICT OFFICE NO. 10, AND PAY A FEE TO THE COUNTY ENGINEER, ROOM 303, COUNTY ENGINEERING BUILDING, 100 WEST SECOND STREET OR MAIL ORDER FORM 100/1000. INDIVIDUAL OFFICE, SUFFICIENT TO COVER THE COST OF CONSTRUCTION INSPECTION AND RECORD PLANS. APPROVAL OF THIS PLAN BY THE COUNTY OF LOS ANGELES DOES NOT CONSTITUTE A REPRESENTATION AS TO THE ACCURACY OF THE LOCATION OF OR THE EXISTENCE OR NON-EXISTENCE OF ANY UNDERGROUND UTILITY PIPE, OR STRUCTURE WITHIN THE LIMITS OF THIS PROJECT. THIS NOTE APPLIES TO ALL PAGES OF THIS PROJECT. IF WORK IS TO BE DONE BY A STATE HIGHWAY, A PERMIT MUST BE OBTAINED FROM THE STATE OF CALIFORNIA, DIVISION OF HIGHWAYS, 120 SOUTH SPRING STREET, LOS ANGELES, CALIFORNIA.

COUNTY OF LOS ANGELES, CALIFORNIA  
 JOHN A. LAMBIE, COUNTY ENGINEER  
 LAS VIRGENES MUNICIPAL WATER DISTRICT  
 APPROVED BY: *[Signature]*  
 ASSISTANT SANITATION ENGINEER  
 SUBMITTED BY: *[Signature]*  
 REGIONAL ENGINEER  
 CHECKED BY: *[Signature]*  
 REG. C.E. NO. 10657

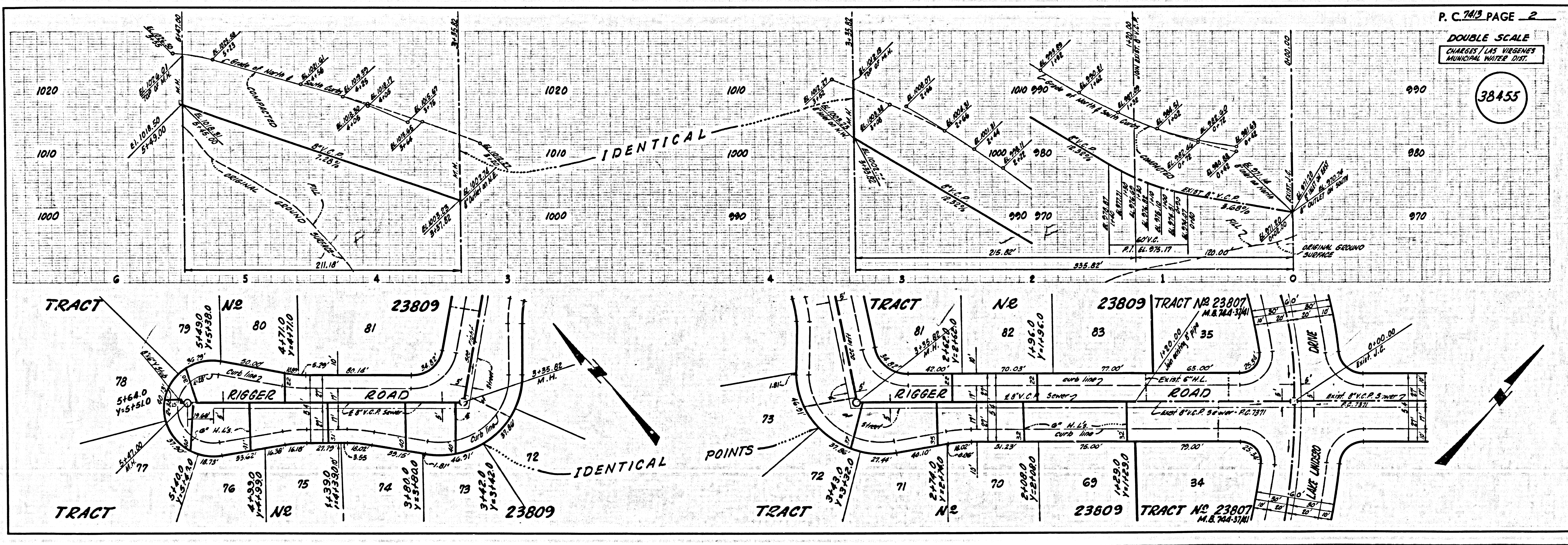
J.N. 0366.05

REVISION: 8-30-71  
 PAGE 5-B REVISED LEGAL ON  
 W. SIDE OF MAINMAST DR. N. OF  
 SLICERS CIRCLE FROM TR. NO. 23809  
 TO PAR. MAP NO. 2270.  
 APPROVED: *[Signature]*  
 OFFICE OF COUNTY ENGINEER

REVISION: 2-23-66  
 PAGE 4 - ADD CHANNEY BASE AND RELOCATE Y'S  
 AND H.L.'S TO MK. DELATE 2 Y'S & 2 H.L.'S  
 PAGE 5-B - EXTEND MAIN LINE 35' N.W. BY M.H. 8  
 BY 51.20 TO 1125.00. RELOCATE H.L.'S TO WEST  
 APPROVED: *[Signature]*  
 OFFICE OF COUNTY ENGINEER

REVISION: 12-9-65  
 Page 4 Add 1 H.L. & 1 wye and  
 relocate H.L. 6 1/2' to north  
 Page 5 Move upper M.H. from 1125.00  
 to 1095.00 Relocate H.L.'s to West  
 Approved: *[Signature]*  
 Office of County Engineer

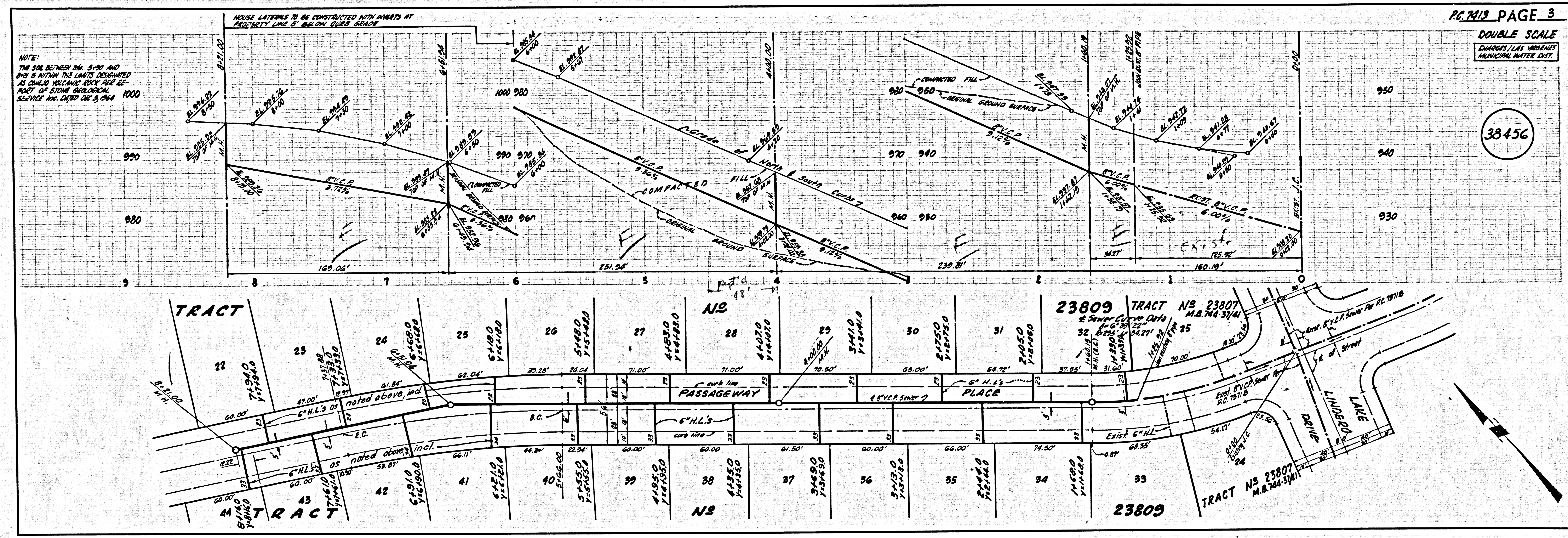
COLLECT CHARGES  
 AS INDICATED  
*[Signature]* 8/13/65



DOUBLE SCALE  
CHARGES LAS VIRGENES MUNICIPAL WATER DIST.

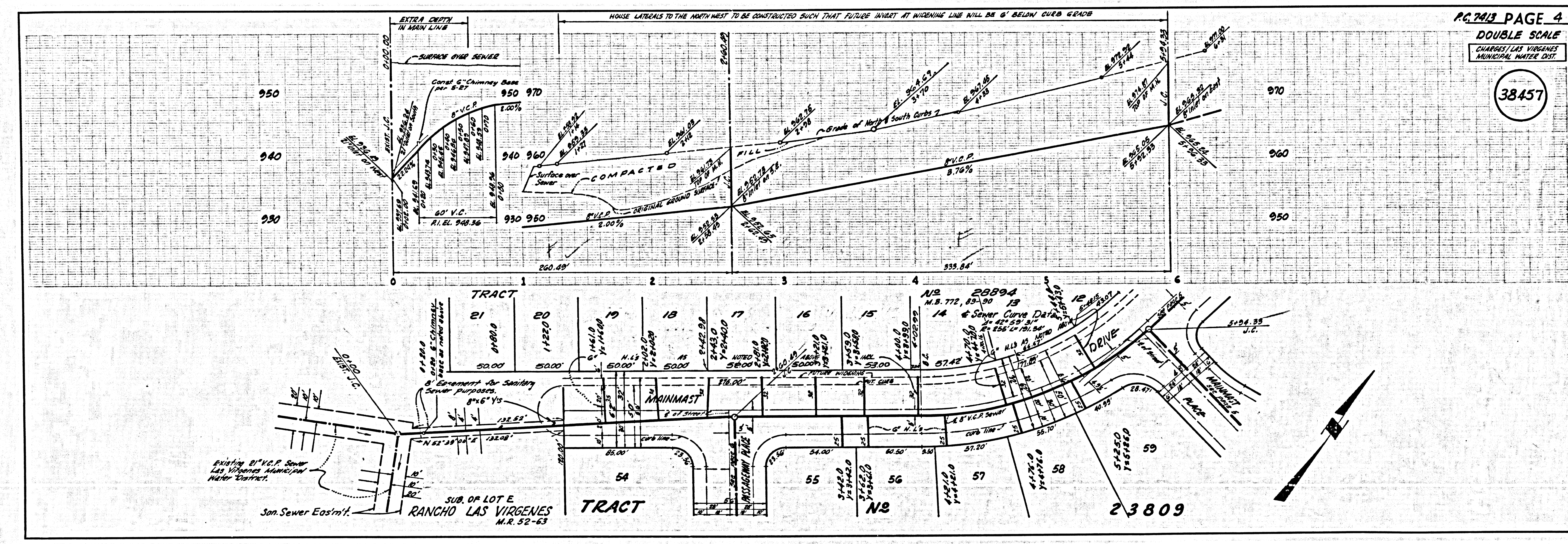
NOTE:  
THE SOIL BETWEEN 3M, 5-10 AND 3M IS WITHIN THE LIMITS DESCRIBED AS SANDY VOLCANIC ROCK PER 27- PART OF STONE GEOLOGICAL SERVICE AND DATED JAN 3, 1964

33456

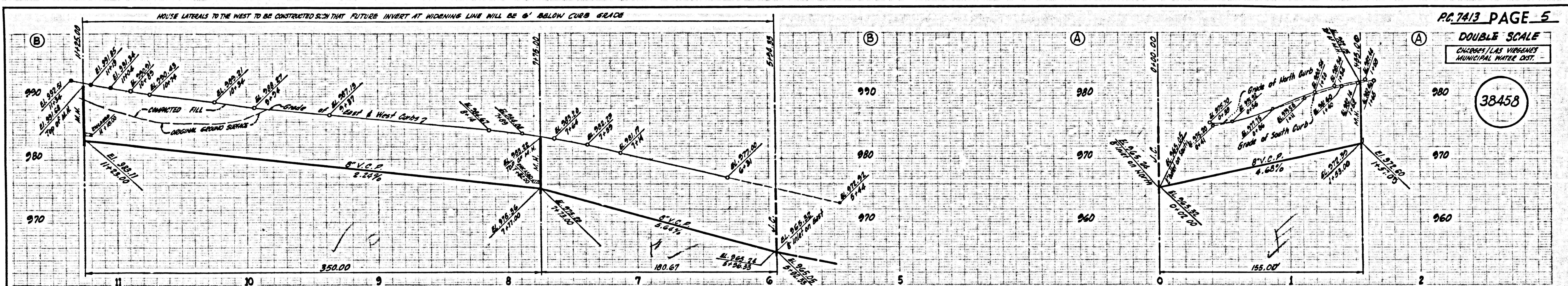


DOUBLE SCALE  
CHARGES LAS VIRGENES MUNICIPAL WATER DIST.

33457

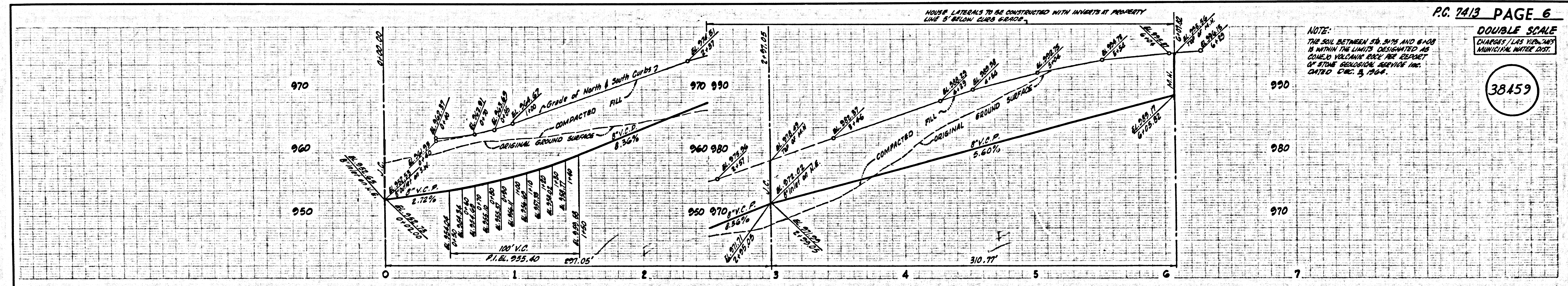
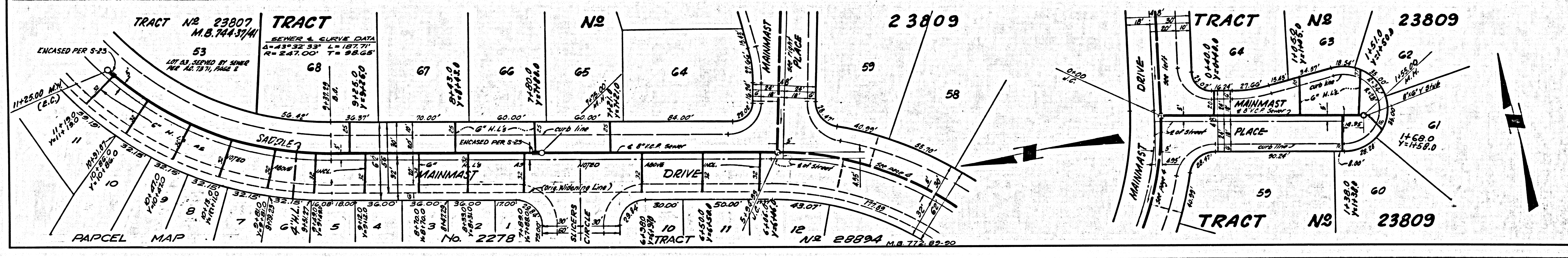


3 EAST 5A 05 CROSS 5A TRACT



PC 7413 PAGE 5  
DOUBLE SCALE  
CHANGES LAS VIRGENES MUNICIPAL WATER DIST.

38458



PC 7413 PAGE 6  
DOUBLE SCALE  
CHANGES LAS VIRGENES MUNICIPAL WATER DIST.

38459

