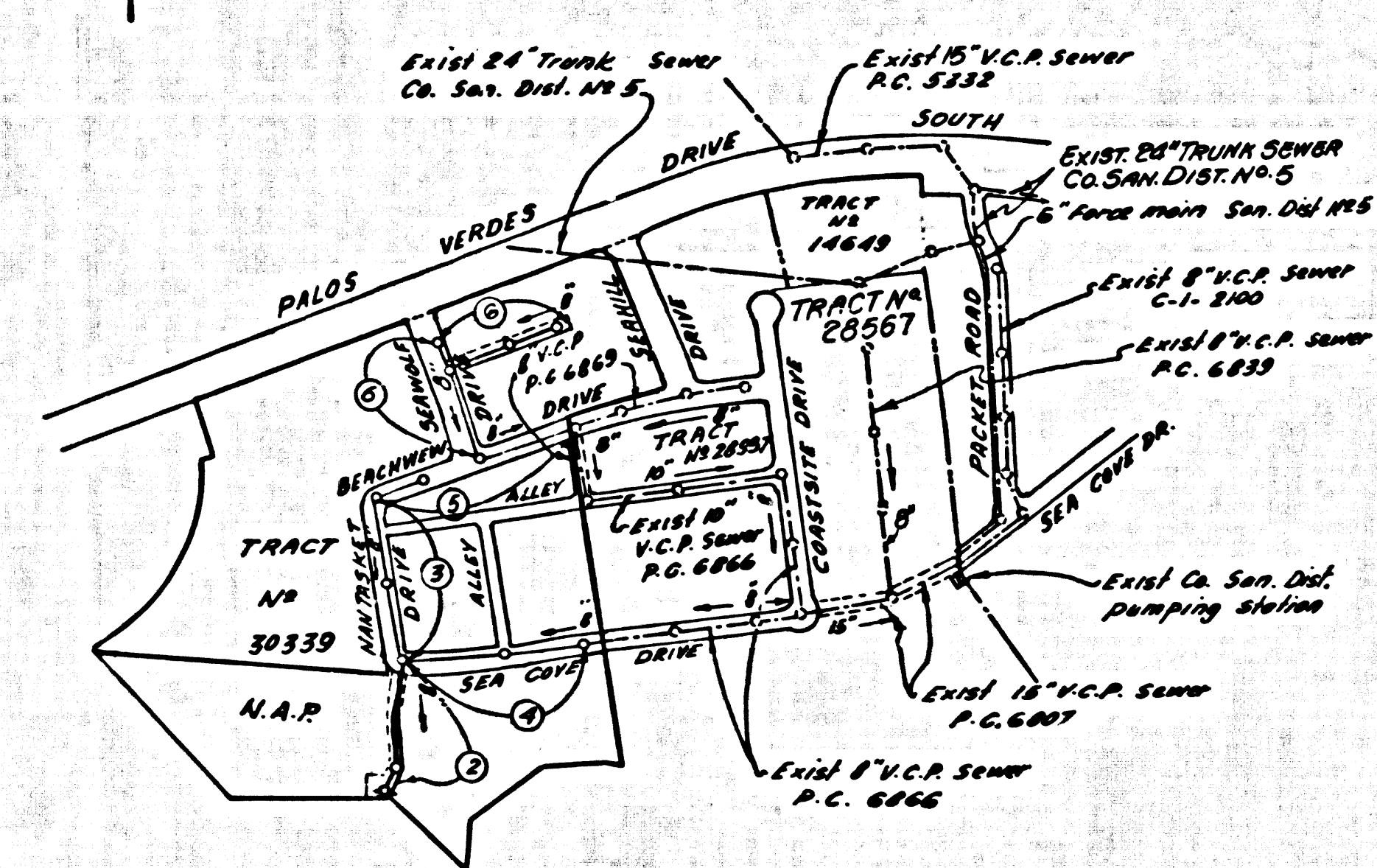


B.M. 516074 ELEV. 235.238
 C.S. Man. in wall nr. o/c Pocket Road
 126 + S. 1/4 Palos Verdes Drive S.
 MAD. B.M. 34-21 1953 RE G3
 PALOS VERDES QUAD. 19 60 ADJ.



NOTE: Numbers in circles indicate page numbers

INDEX MAP
 TRACT No 30339
 P.C. No 7414
 SCALE 1" = 600'

NOTE: Lots 3, 4, 5 served by sewer per P.C. 6866

NO CONNECTIONS SHALL BE PERMITTED UNTIL COMPLETION OF PUMP STATION AND FORCE MAIN BY SANITATION DISTRICT NO. 5

REVISED LOCATION OF 10" R.C. FORCE MAIN AND ADDED CONTRACTOR'S NOTE ON PAGE 2
 APPROVED *Edward J. Valerich*
 7-4-65

BEFORE BREAKING INTO ANY EXISTING STRUCTURE AND BEFORE FINAL ACCEPTANCE OF THIS WORK, COUNTY SANITATION DISTRICT (SU 4 1281) SHALL BE NOTIFIED IN ORDER THAT REQUIRED INSPECTION CAN BE MADE.

DOUBLE SCALE
 LOMITA BLDG. DIST. NO. 12

PROFILE ALIGNMENT AND GRADE OF
 SANITARY SEWERS
 TO BE CONSTRUCTED IN

P.C. 7414
 PAGE 1

TRACT No 30339

PRIVATE CONTRACT NO. 7414

W.S. 27

3 SHEETS, 6 PAGES
 SCALE: VERT. 1" = 4' HORIZ. 1" = 40'

39164

PREPARED IN THE OFFICES OF
 DEVELOPMENT CONSULTANTS INC.
 ENGINEERING DIVISION
 1001 E. COLORADO BLVD. PASADENA, CALIFORNIA
 REG. C. E. NO. 3552

FOR LEGEND SEE PLAN NO. S-1

- PROVIDE STAKES ON THE PROPERTY LINE OR PROPERTY LINES PRODUCED AT RIGHT ANGLES TO THE SEWER LINE AT THE CENTER LINE OF EACH MANHOLE.
- NO REPRESENTATIVE OF THE COUNTY ENGINEER WILL SURVEY OR LAY OUT ANY PORTION OF THE WORK.
- THE PRIVATE ENGINEER SHALL FURNISH THE COUNTY ENGINEER WITH GRADE SHEETS AND STATIONING FOR ALL HOUSE LATERALS AND Y BRANCHES AND SHALL PROVIDE STAKES FOR THEM AT THEIR PROPER LOCATIONS WITH STATIONING PLAINLY MARKED. ALL HOUSE LATERALS SHALL BE CONSTRUCTED IN A STRAIGHT ALIGNMENT AT RIGHT ANGLES FROM THE MAIN LINE SEWER EXCEPT AS SHOWN ON THE PLANS. HOUSE LATERALS FROM CHIMNEYS SHALL NOT HAVE AN ANGLE OF LESS THAN 45° WITH THE MAIN LINE SEWER. ANY CHANGE IN ALIGNMENT SHALL BE REQUESTED IN WRITING BY THE PRIVATE ENGINEER.
- THE PRIVATE ENGINEER SHALL FURNISH THE HOUSE LATERAL SLOPE AT THE PROPERTY LINE BELOW THE TOP OF CURB ELEVATION FOR EACH HOUSE LATERAL ON THE GRADE SHEET.
- NO IMPROVE SHALL BE MADE IN THESE PLANS WITHOUT THE APPROVAL OF THE COUNTY ENGINEER.
- THE CONTRACTOR SHALL NOTIFY THE CONSTRUCTION DIVISION BY TELEPHONE, HANSHORN 9-4747, EXT. 2841, AT LEAST TWENTY-FOUR HOURS BEFORE STARTING ANY WORK UNDER THIS CONTRACT.
- MANHOLES SHALL BE BRICK SEWER STRUCTURES PER S-3-F PRECAST CONCRETE MANHOLES PER S-6 ON S-6 MAY BE USED AS AN ALTERNATE IN LOCATIONS APPROVED BY THE COUNTY ENGINEER.
- USE STANDARD MANHOLE FRAMES AND COVERS, S-10, EXCEPT AS NOTED.
- MANHOLE TOPS IN UNIMPROVED RIGHTS-OF-WAY TO BE SEE ABOVE FINISHED GRADE.
- USE EXTRA STRENGTH PIPE, ALL PIPE & STANDARD SIZES EXCEPT AS NOTED.
- USE CHAMBER MOUNTED OR MECHANICAL COMPRESSION JOINTS FOR ALL V.C.P. JOINTS PER SPECS., SECS. 26 & 48.47
- WHERE EVER SHOWN WATER IS ENCOUNTERED DURING THE CONSTRUCTION OF THE SEWERS, THE V.C.P. SHOULD BE GRADE 20-20-20-20-20-20 PER SPECS. PER S-10, OR HIGH-DENSITY POLYETHYLENE PER SPECS. PER S-10.
- IF A POWER POLE IS WITHIN THREE FEET OF THE SEWER, THE SEWER SHALL BE ENCASED, PER S-2-23 TWO FEET ON EACH SIDE FROM THE POINT OF INTERFERENCE.
- IF DURING THE COURSE OF CONSTRUCTION IT IS DETERMINED THAT THERE IS LESS THAN FOUR FEET OF COVER OVER THE TOP OF A MAIN LINE OR HOUSE LATERAL V.C.P. SEWER WHICH IS NOT INDICATED ON THE PLANS, THE PIPE SHALL BE ENCASED PER S-2-23 UNLESS OTHERWISE APPROVED BY THE COUNTY ENGINEER.
- HOUSE LATERALS TO BE CONSTRUCTED WITH INVERTS AT PROPERTY LINE... 6" PER FEET BELOW CURB GRADE EXCEPT AS NOTED.
- RESURFACE ALL TRENCHES WITHIN PAVED AREAS TO MEET L.A. COUNTY ROAD DEPT. OR CALIFORNIA STATE HIGHWAY REQUIREMENTS IN ACCORDANCE WITH PERMITS.
- FOR ALLOWABLE LEAKAGE TEST USE FORMULA NO. 100... SPECS. SEC. 64
- ALL STATE & LOCAL TRINCH SAFETY ORDERS SHALL BE RIGIDLY ENFORCED.
- CONSTRUCTION IN FILLED AREAS.
 (a) AN ACCEPTABLE CERTIFICATION OF COMPACTION TEST RESULTS SHALL BE SUBMITTED TO THE CONSTRUCTION DIVISION. COMPACTION TESTS ARE TO BE MADE IN ACCORDANCE WITH A S.T.M. STANDARD METHOD OF TEST D-698-437.
 (b) IF THE RELATIVE DENSITY OF COMPACTION IS LESS THAN 90%, ALL MAIN LINE AND HOUSE LATERALS SHALL BE GRADED PER S-2-23 OR HAVE A SPECIAL BASE COURSE PER S-2-23.
 (c) IF THE RELATIVE DENSITY OF COMPACTION IS 90% OR GREATER, THE SPECIAL PROVISIONS IN (b) ARE NOT REQUIRED.
- WHERE STATIONS ARE SHOWN AT THE END OF HOUSE LATERALS THE LOCATION OF SUCH HOUSE LATERALS SHALL NOT BE MOVED ABOVE THE STATION INDICATED.

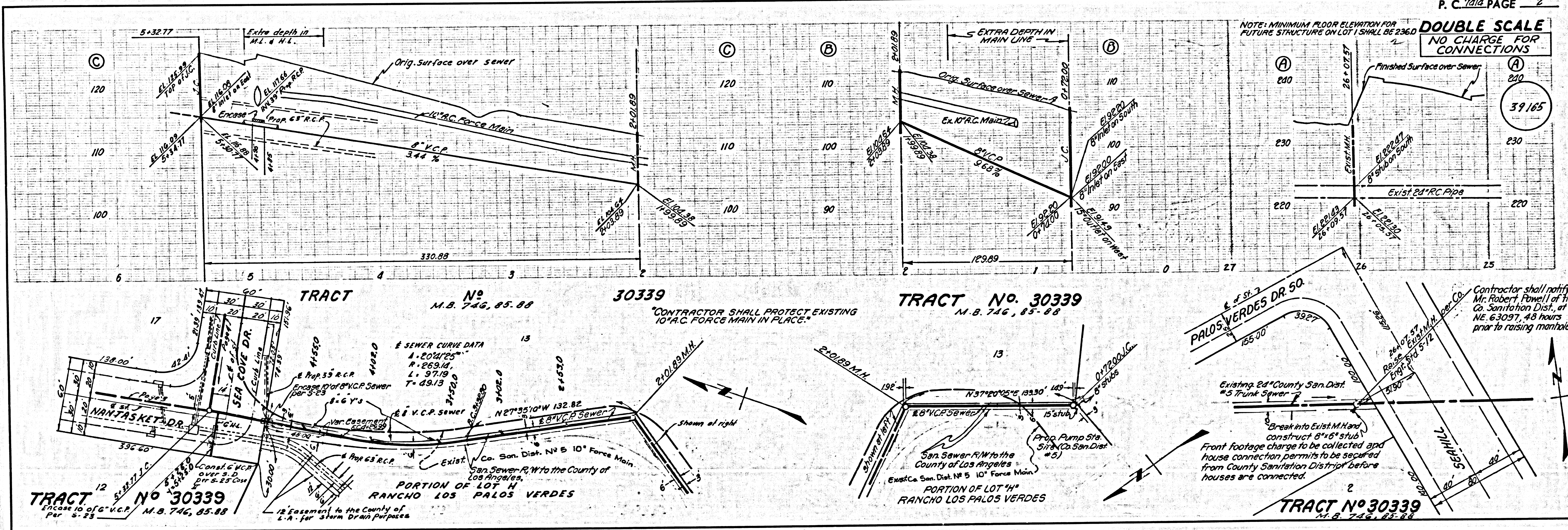
COLLECT CHARGES AS INDICATED
Harold Weber

NO CONNECTIONS FOR THE DISPOSAL OF INDUSTRIAL WASTES SHALL BE MADE TO SEWERS SHOWN ON THESE DRAWINGS WITHOUT WRITTEN PERMISSION FROM THE CHIEF ENGINEER AND GENERAL MANAGER OF THE COUNTY SANITATION DISTRICTS.

COUNTY OF LOS ANGELES, CALIFORNIA
 JOHN A. LAMBE, COUNTY ENGINEER
 J. D. PARKHURST, CHIEF ENGINEER
 CO. SAN. DIST. NO. 5
 APPROVED BY *Robert Powell* ASSISTANT SANITATION ENGINEER
 APPROVED BY *Edward J. Valerich* OFFICE ENGINEER

CHECKED BY *Edward J. Valerich*
 REG. C.E. NO. 10422

J.N. 0366.06



P.C. 7414 PAGE 2
 DOUBLE SCALE
 NO CHARGE FOR CONNECTIONS

39165

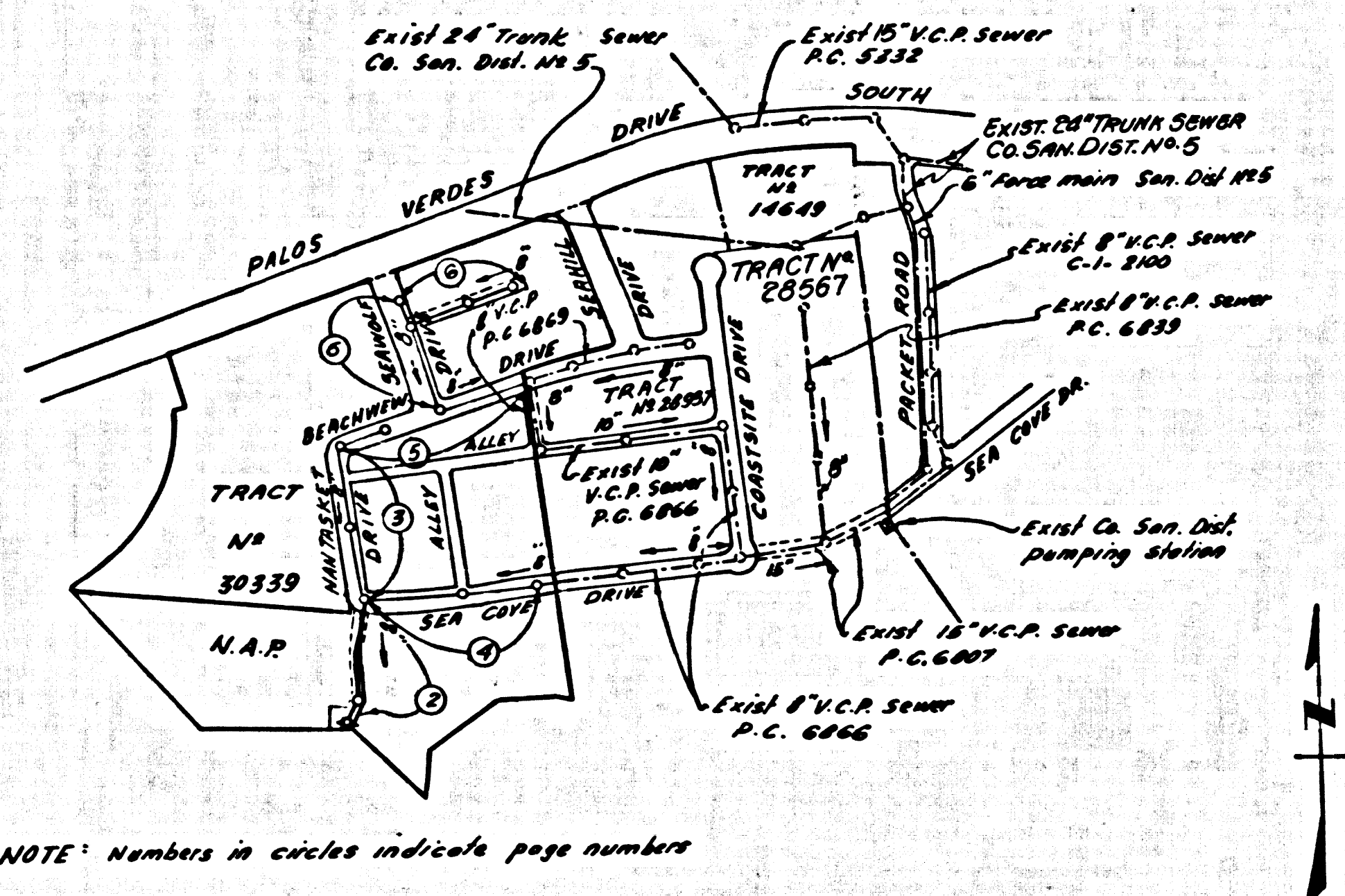
TRACT No 30339
 Encase 10" V.C.P. Per S-2-23
 M.B. 746, 85-88

TRACT No 30339
 M.B. 746, 85-88
 CONTRACTOR SHALL PROTECT EXISTING 10" R.C. FORCE MAIN IN PLACE.

TRACT No 30339
 M.B. 746, 85-88

TRACT No 30339
 M.B. 746, 85-88

B.M. S.Y. 6074 ELEV. 235.238
 C.S. Man. in wall at c/c Pocket Road
 126 S. Ch. Palos Verdes Drive S.
 Mad. B.M. 34-21 1953 RE G3
 PALOS VERDES QUAD. 19 GO ADT.



INDEX MAP
 TRACT No. 30339
 P.C. No. 7414
 SCALE 1" = 600'

NOTE: Lots 3, 4, 21 served by sewer per P.C. 6866

No Connections Shall Be Permitted Until Completion of Pump Station and Force Main by Sanitation District No. 5

REVISED LOCATION OF 10" A.C. FORCE MAIN AND ADDED CONTRACTOR'S NOTE ON PAGE 2
 APPROVED *Edward J. Valdez* 7-6-65

BEFORE BREAKING INTO ANY EXISTING STRUCTURE AND BEFORE FINAL ACCEPTANCE OF THIS WORK, COUNTY SANITATION DISTRICT (CD 4-1281) SHALL BE NOTIFIED IN ORDER THAT REQUIRED INSPECTION CAN BE MADE.

DOUBLE SCALE
 LOMITA BLDG. DIST. NO. 12

- NOTE:
- PROVIDE STAKES ON THE PROPERTY LINE OR PROPERTY LINES PRODUCED AT RIGHT ANGLES TO THE SEWER LINE AT THE CENTER LINE OF EACH MANHOLE.
 - NO REPRESENTATIVE OF THE COUNTY ENGINEER WILL SURVEY OR LAY OUT ANY PORTION OF THE WORK.
 - THE PRIVATE ENGINEER SHALL FURNISH THE COUNTY ENGINEER WITH GRADE SHEETS AND STATIONING FOR ALL HOUSE LATERALS AND Y-BRANCHES AND SHALL PROVIDE STAKES FOR THEM AT THEIR PROPER LOCATIONS WITH STATIONING PLAINLY MARKED. ALL HOUSE LATERALS SHALL BE CONSTRUCTED IN A STRAIGHT ALIGNMENT AT RIGHT ANGLES FROM THE MAIN LINE SEWER EXCEPT AS SHOWN ON THE PLANS. HOUSE LATERALS FROM CHIMNEYS SHALL NOT HAVE AN ANGLE OF LESS THAN 45° WITH THE MAIN LINE SEWER. ANY CHANGE IN ALIGNMENT SHALL BE REQUESTED BY WRITING BY THE PRIVATE ENGINEER.
 - THE PRIVATE ENGINEER SHALL FURNISH THE HOUSE LATERAL DEPTH AT THE PROPERTY LINE BELOW THE TOP OF CURB ELEVATION FOR EACH HOUSE LATERAL ON THE GRADE SHEET.
 - NO REVISIONS SHALL BE MADE IN THESE PLANS WITHOUT THE APPROVAL OF THE COUNTY ENGINEER.
 - THE CONTRACTOR SHALL NOTIFY THE CONSTRUCTION DIVISION BY TELEPHONE, MADISON 9-5747, EXT. 8848, AT LEAST TWENTY-FOUR HOURS BEFORE STARTING ANY WORK UNDER THE CONTRACT.
 - MANHOLES SHALL BE BRICK REVERSED STRUCTURES PER S-2 PRECAST CONCRETE MANHOLES PER S-5 OR S-6 MAY BE USED AS AN ALTERNATE IN LOCATIONS APPROVED BY THE COUNTY ENGINEER.
 - USE STANDARD MANHOLE FRAMES AND COVERS, S-15, EXCEPT AS NOTED.
 - MANHOLE TOPS IN UNIMPROVED RIGHTS-OF-WAY TO BE SET HIGHER ABOVE FINISHED GRADE.
 - USE EXTRA STRENGTH PIPE ALL PIPE IS STANDARD DEPTH EXCEPT AS NOTED.
 - USE CHIMNEY JOINTS OR MECHANICAL JOINTS FOR ALL V.C.P. JOINTS PER SPEC. SECT. 16 & 16.1 & 16.2.
 - WHERE EVER SHOWN WATER IS DISCHARGED DURING THE CONSTRUCTION OF THE SEWER, THE V.C.P. SHOULD BE OPEN TO THE STREET PER SPEC. SECT. 20-6-4, OR MECHANICAL JOINTS PER SPEC. SECT. 20-6-4.
 - IF A POWER POLE IS WITHIN THREE FEET OF THE SEWER, THE SEWER SHALL BE ENCASED PER S-23 TWO FEET ON EACH SIDE FROM THE POINT OF INTERFERENCE.
 - IF DURING THE COURSE OF CONSTRUCTION IT IS DETERMINED THAT THERE IS LESS THAN FOUR FEET OF COVER OVER THE TOP OF A MAIN LINE OR HOUSE LATERAL V.C.P. SEWER WHICH IS NOT INDICATED ON THE PLANS, THE PIPE SHALL BE ENCASED PER S-23 UNLESS OTHERWISE APPROVED BY THE COUNTY ENGINEER.
 - HOUSE LATERALS TO BE CONSTRUCTED WITH INVERTS AT PROPERTY LINE. FEET SHOW CURB GRADE EXCEPT AS NOTED.
 - RESURFACE ALL TRENCHES WITHIN PAVED AREAS TO MEET L.A. COUNTY ROAD DEPT. OR CALIFORNIA STATE HIGHWAY REQUIREMENTS IN ACCORDANCE WITH PERMITS.
 - FOR ADJUSTABLE IMAGE THE USE FORMULA NO. SPEC. SEC. 16. ALL STATE & LOCAL TRUCK WEIGHTS SHALL BE FULLY ENFORCED.
 - CONSTRUCTION IN FILLED AREAS.
 - AN ACCEPTABLE CERTIFICATION OF COMPACTION TEST RESULTS SHALL BE SUBMITTED TO THE CONSTRUCTION DIVISION. COMPACTION TESTS ARE TO BE MADE IN ACCORDANCE WITH ASTM STANDARD METHOD OF TEST D-698-42T.
 - NO CONSTRUCTION IS PERMITTED IN FILLED AREAS WHERE THE RELATIVE DENSITY OF COMPACTION IS LESS THAN 80%.
 - IF THE RELATIVE DENSITY OF COMPACTION IS LESS THAN 80%, ALL MAIN LINE AND HOUSE LATERALS SHALL BE GRADED PER S-23 OR HAVE A SPECIAL BASE COURSE PER S-21. SPECIAL MANHOLE BASES PER S-15 ARE REQUIRED.
 - IF THE RELATIVE DENSITY OF COMPACTION IS 80% OR GREATER, THE SPECIAL PROVISIONS IN (C) ARE NOT REQUIRED.
 - WHERE STATIONS ARE SHOWN AT THE END OF HOUSE LATERALS THE LOCATION OF SUCH HOUSE LATERALS SHALL NOT BE MOVED ABOVE THE STATION INDICATED.

COLLECT CHARGES AS INDICATED
Harold Weber

NO CONNECTIONS FOR THE DISPOSAL OF INDUSTRIAL WASTES SHALL BE MADE TO SEWERS SHOWN ON THESE DRAWINGS WITHOUT WRITTEN PERMISSION FROM THE CHIEF ENGINEER AND GENERAL MANAGER OF THE COUNTY SANITATION DISTRICTS.

PROFILE ALIGNMENT AND GRADE OF
 SANITARY SEWERS PAGE 1
 TO BE CONSTRUCTED IN

TRACT No. 30339
 W.S. 27
 PRIVATE CONTRACT NO. 7414

3 SHEETS, 6 PAGES
 SCALE: VERT. 1" = 4' JULY, 1965
 PREPARED IN THE OFFICES OF
 DEVELOPMENT CONSULTANTS INC.
 1001 E. COLORADO BLVD. PASADENA, CALIFORNIA 91104
 BY *J. S. Skand*
 REG. C. E. No. 2553
 FOR LEGEND SEE PLAN NO. S-1

39164

NOTE:
 GRADES TO WHICH THE IMPROVEMENT IS TO BE CONSTRUCTED ARE SHOWN ON PLANS AND PROFILES. GRADE POINTS FOR TOP OF CURB, CENTER LINE OF STREETS, OR CENTER LINE OF ALLEYS ARE SHOWN BY CIRCLES ON PROFILES. AT ALL POINTS BETWEEN DESIGNATED POINTS THE GRADE SHALL BE ESTABLISHED SO AS TO COMFORM TO A STRAIGHT LINE DRAWN BETWEEN SAID DESIGNATED POINTS. ELEVATIONS ARE IN FEET ABOVE U.S.C. & G.S. MEAN SEA LEVEL DATUM OF 1929.
 THE DRAWING AND THE DATA HEREON ARE HEREBY MADE A PART OF THE SPECIFICATIONS DATED JULY 28, 1962, ON FILE IN THE OFFICE OF THE COUNTY ENGINEER AND SHALL BE PROSECUTED UNDER THE PENALTY OF PERJURY BY ANY PERSON WHO SHALL ATTEMPT TO REPRODUCE OR REPRODUCE THE SAME WITHOUT THE WRITTEN PERMISSION OF THE COUNTY ENGINEER.
 ROAD DEPT. DISTRICT OFFICE HAS BEEN NOTIFIED AND HAS PAID THE COUNTY OF LOS ANGELES FOR THE COST OF THE CONSTRUCTION INSPECTION AND RECORD PLANS.
 THE WELL SECOND STREET OR PALOS VERDES DRIVE PROJECT IS REGIONAL OFFICE, SUFFICIENT TO COVER THE COST OF CONSTRUCTION INSPECTION AND RECORD PLANS.
 THE COUNTY OF LOS ANGELES DOES NOT CONSTITUTE A REPRESENTATION AS TO THE ACCURACY OF THE APPROVAL OF THE PLAN BY THE COUNTY ENGINEER, SOLEMEN, COUNTY ENGINEERING BOARD, COUNTY ENGINEERING BOARD, ROAD DEPT. DISTRICT OFFICE HAS BEEN NOTIFIED AND HAS PAID THE COUNTY OF LOS ANGELES FOR THE COST OF THE CONSTRUCTION INSPECTION AND RECORD PLANS.
 IF WORK IS TO BE DONE BY A STATE HIGHWAY, A PERMIT MUST BE OBTAINED FROM THE STATE OF CALIFORNIA, DIVISION OF HIGHWAYS, THE SOUTH BRIDGE STREET, LOS ANGELES, CALIFORNIA.

COUNTY OF LOS ANGELES, CALIFORNIA
 JOHN A. LAMBIE, COUNTY ENGINEER J. D. PARKHURST, CHIEF ENGINEER
 APPROVED BY *Robert K.* APPROVED BY *J. D. Parkhurst*
 ASSISTANT SANITATION ENGINEER OFFICE ENGINEER

CHECKED BY *Edward J. Valdez*
 REG. C. E. NO. 15223

J.N. 0366.06

