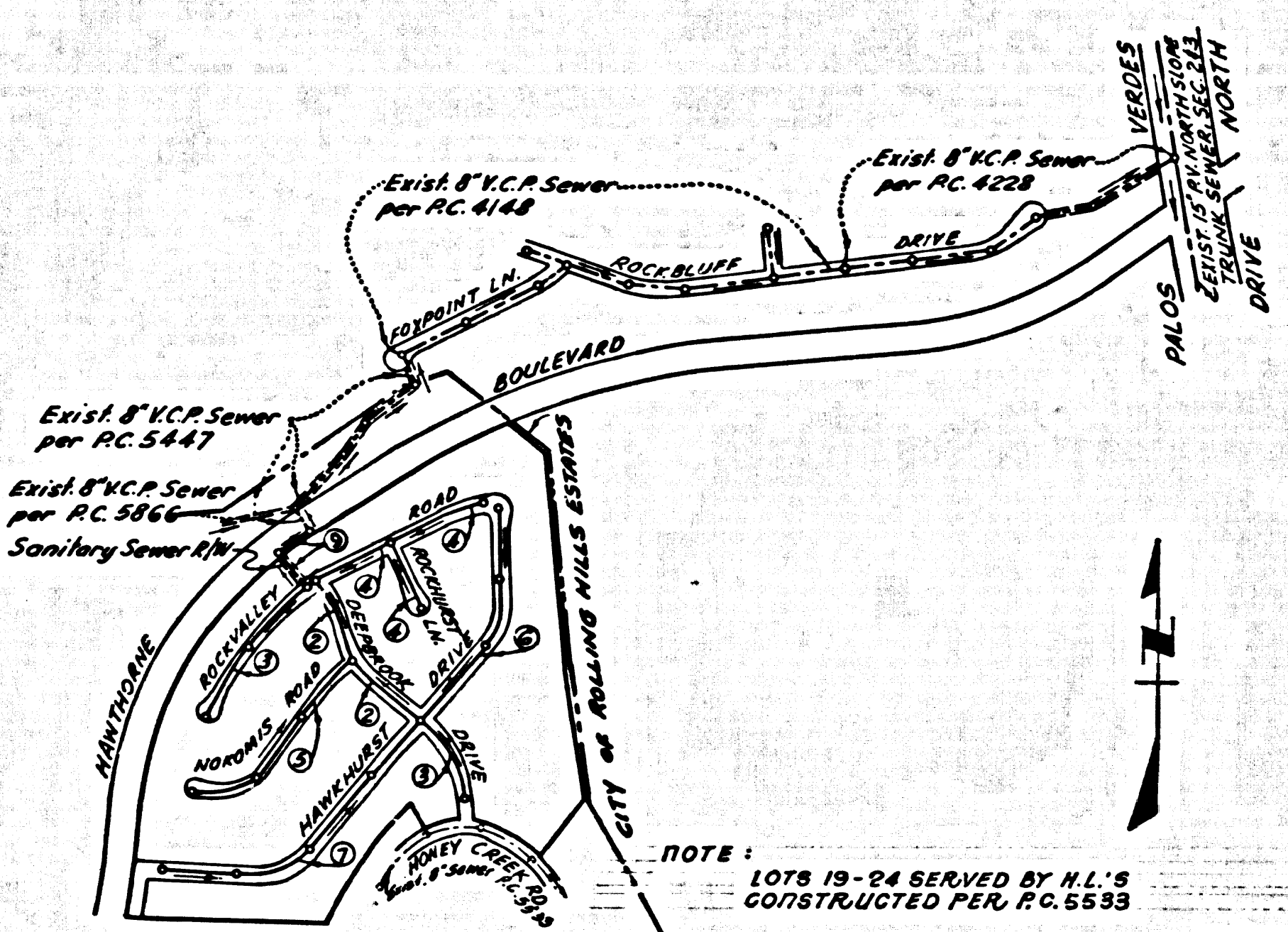


B.M. SY 6026 ELEV. 704.589
 R.D.M. Tag in conc. catch basin
 with drop inlet 40" x 25" Hawthorne
 Blvd. 4 0/8 mi. E. W. int. Palos Verdes
 Drive North.
 Palos Verdes QUAD. 1960



INDEX MAP
 TRACT NO. 19691
 P.C. 7419
 SCALE: 1" = 600'

REVISIONS - pages 788,
 Raised main line sewer grade from station
 3+52.44 to station 9+20.66. Reduced size
 of house laterals where not already con-
 structed from 6" to 4". Relocated house
 laterals to clear driveways.
 By *Edward J. Valdes*, P.C.E. 10653, Date 6-2-66

DOUBLE SCALE .
LOMITA BLDG. DIST. NO. 12 .

PROFILE ALIGNMENT AND GRADE OF
SANITARY SEWERS PAGE 1
 TO BE CONSTRUCTED IN

TRACT No 19691 (38490)
PRIVATE CONTRACT NO. 7419

W.S. 27
 5 SHEETS, 9 PAGES
 SCALE: HORIZ. 1" = 60' VERT. 1" = 4'
 JULY, 1965

PREPARED IN THE OFFICES OF
JENNINGS ENGINEERING COMPANY
 100 S. BEVERLY DRIVE, LOS ANGELES, CALIFORNIA.

FOR LEGEND SEE PLAN NO. S-1

- NOTES:
1. PROVIDE STAKES ON THE PROPERTY LINE OR PROPERTY LINES PRODUCED AT RIGHT ANGLES TO THE SEWER LINE AT THE CENTER LINE OF EACH MANHOLE.
 2. NO REPRESENTATIVE OF THE COUNTY ENGINEER WILL SURVEY OR LAY OUT ANY PORTION OF THE WORK.
 3. THE PRIVATE ENGINEER SHALL FURNISH THE COUNTY ENGINEER WITH GRADE SHEETS AND STATIONING FOR ALL HOUSE LATERALS AND Y BRANCHES AND SHALL PROVIDE STAKES FOR THEM AT THEIR PROPER LOCATIONS WITH STATIONING PLAINLY MARKED. ALL HOUSE LATERALS SHALL BE CONSTRUCTED ON A STRAIGHT ALIGNMENT AT RIGHT ANGLES FROM THE MAIN LINE SEWER EXCEPT AS SHOWN ON THE PLANS. HOUSE LATERALS FROM CHIMNEYS SHALL NOT HAVE AN ANGLE OF LESS THAN 45° WITH THE MAIN LINE SEWER. ANY CHANGE IN ALIGNMENT SHALL BE REQUESTED IN WRITING BY THE PRIVATE ENGINEER.
 4. THE PRIVATE ENGINEER SHALL FURNISH THE HOUSE LATERAL DEPTH AT THE PROPERTY LINE BELOW THE TOP OF CURB ELEVATION FOR EACH HOUSE LATERAL ON THE GRADE SHEET.
 5. NO REVISIONS SHALL BE MADE IN THESE PLANS WITHOUT THE APPROVAL OF THE COUNTY ENGINEER.
 6. THE CONTRACTOR SHALL NOTIFY THE CONSTRUCTION DIVISION BY TELEPHONE, MADISON 9-0747, EXT. 8158, AT LEAST TWENTY-FOUR HOURS BEFORE STARTING ANY WORK UNDER THIS CONTRACT.
 7. MANHOLES SHALL BE BRICK SEWER STRUCTURES PER S-3 PRECAST CONCRETE MANHOLES PER S-6 OR S-6 MAY BE USED AS AN ALTERNATE IN LOCATIONS APPROVED BY THE COUNTY ENGINEER.
 8. USE STANDARD MANHOLE FRAMES AND COVERS, S-16 EXCEPT AS NOTED.
 9. MANHOLE TOPS IN UNIMPROVED RIGHTS-OF-WAY TO BE SIX INCHES ABOVE FINISHED GRADE.
 10. USE EXTRA STRENGTH PIPE. ALL PIPE IS STANDARD DEPTH EXCEPT AS NOTED.
 11. USE MECHANICAL COMPRESSION JOINTS FOR ALL V.C.P. JOINTS PER SPEC. SEC. 34, 48, 49.
 12. ALL Y'S TO BE CONSTRUCTED AT STATIONS AS NOTED.
 13. IF A POWER POLE IS WITHIN THREE FEET OF THE SEWER, THE SEWER SHALL BE ENCASED, PER S-25 CASE II, TWO FEET ON EACH SIDE FROM THE POINT OF INTERFERENCE.
 14. IF DURING THE COURSE OF CONSTRUCTION IT IS DETERMINED THAT THERE IS LESS THAN FOUR FEET OF COVER OVER THE TOP OF A MAIN LINE OR HOUSE LATERAL V.C.P. SEWER WHICH IS NOT INDICATED ON THE PLANS, THE PIPE SHALL BE ENCASED PER S-25 CASE II, UNLESS OTHERWISE APPROVED BY THE COUNTY ENGINEER.
 15. HOUSE LATERALS TO BE CONSTRUCTED WITH INVERTS AT PROPERTY LINE. FEET BELOW CURB GRADE EXCEPT AS NOTED.
 16. RESURFACE ALL TRENCHES WITHIN PAVED AREAS TO MEET L.A. COUNTY ROAD DEPT. OR CALIFORNIA STATE HIGHWAY REQUIREMENTS IN ACCORDANCE WITH PERMITS.
 17. FOR ALLOWABLE LEAKAGE TEST USE FORMULA NO. 2 SPEC. SEC. 64.
 18. ALL STATE AND LOCAL TRENCH SAFETY ORDERS WILL BE RIGIDLY ENFORCED.
 19. CONSTRUCTION IN FILLED AREAS.
 - (a) AN ACCEPTABLE CERTIFICATION OF COMPACTION TEST RESULTS SHALL BE SUBMITTED TO THE CONSTRUCTION DIVISION. COMPACTION TESTS AREA TO BE MADE IN ACCORDANCE WITH A.S.T.M. STANDARD METHOD OF TEST D-1557-42.
 - (b) NO CONSTRUCTION IS PERMITTED IN FILLED AREAS WHERE THE RELATIVE DENSITY OF COMPACTION IS LESS THAN 90%.
 - (c) IF THE RELATIVE DENSITY OF COMPACTION IS LESS THAN 90%, ALL MAIN LINE AND HOUSE LATERALS SHALL BE ENCASED PER S-25 CASE II, UNLESS OTHERWISE APPROVED BY THE COUNTY ENGINEER.
 - (d) THE RELATIVE DENSITY OF COMPACTION IS 90% OR GREATER, THE SPECIAL PROVISIONS (C) ARE NOT REQUIRED.

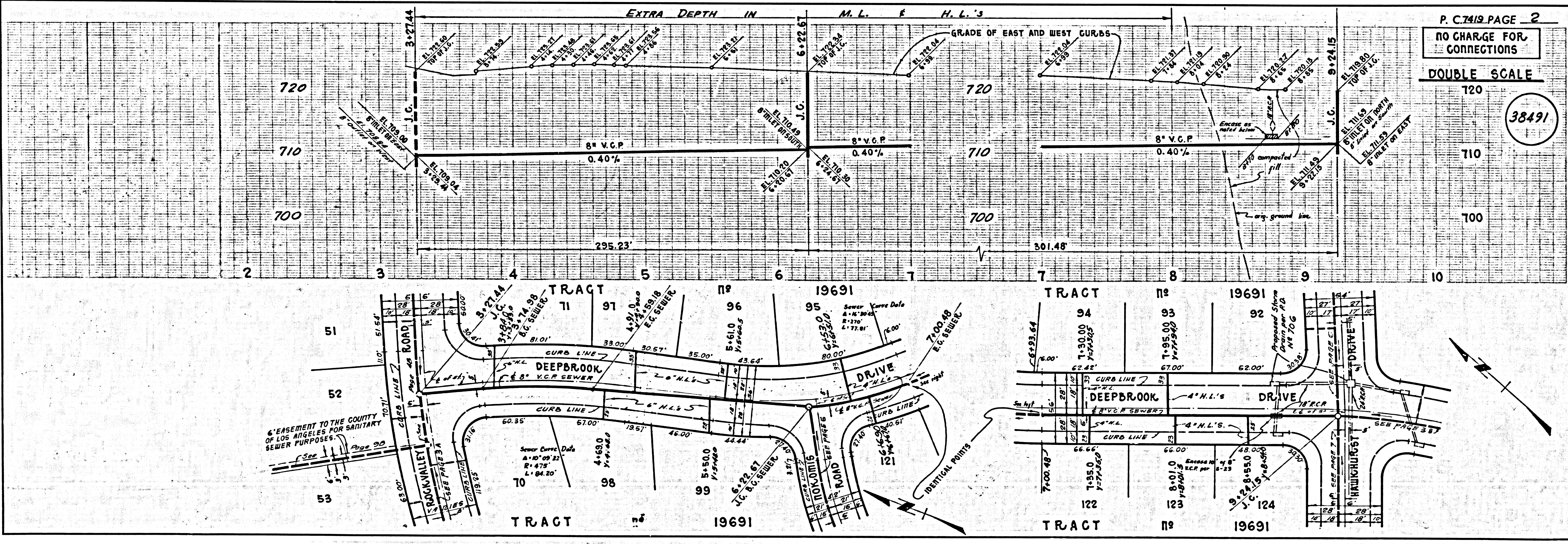
COLLECT CHARGES AS INDICATED
Edward J. Valdes

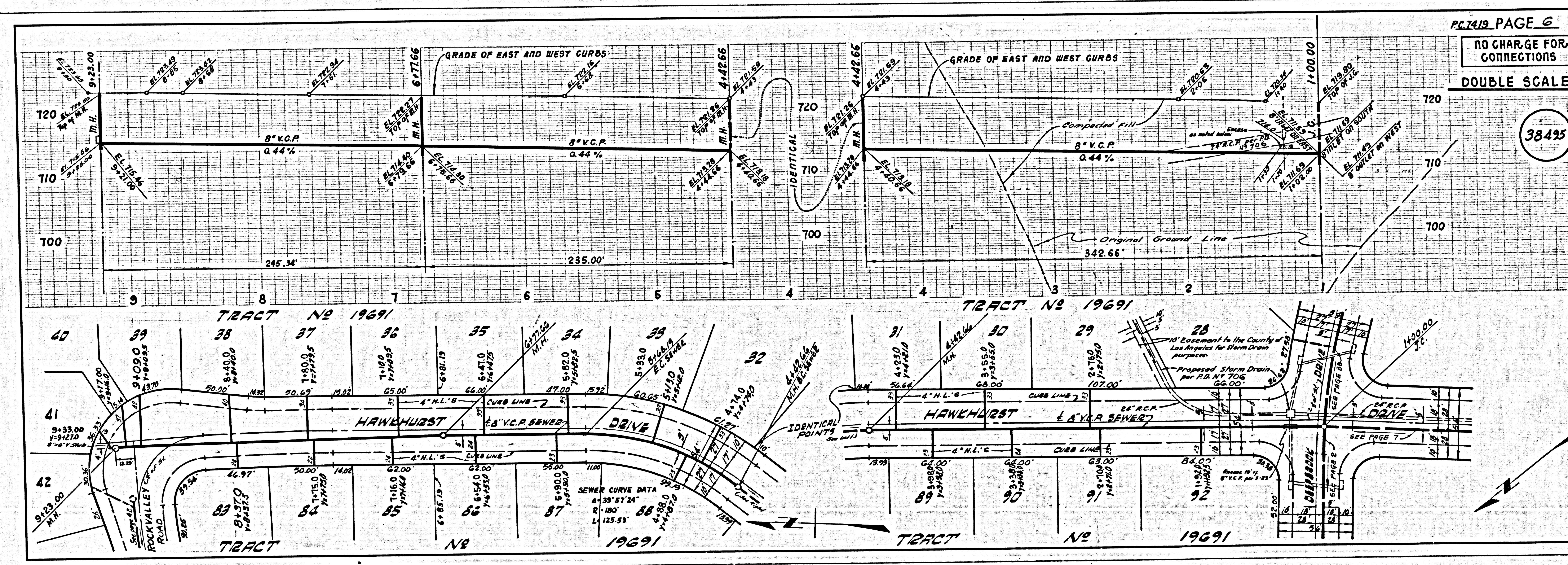
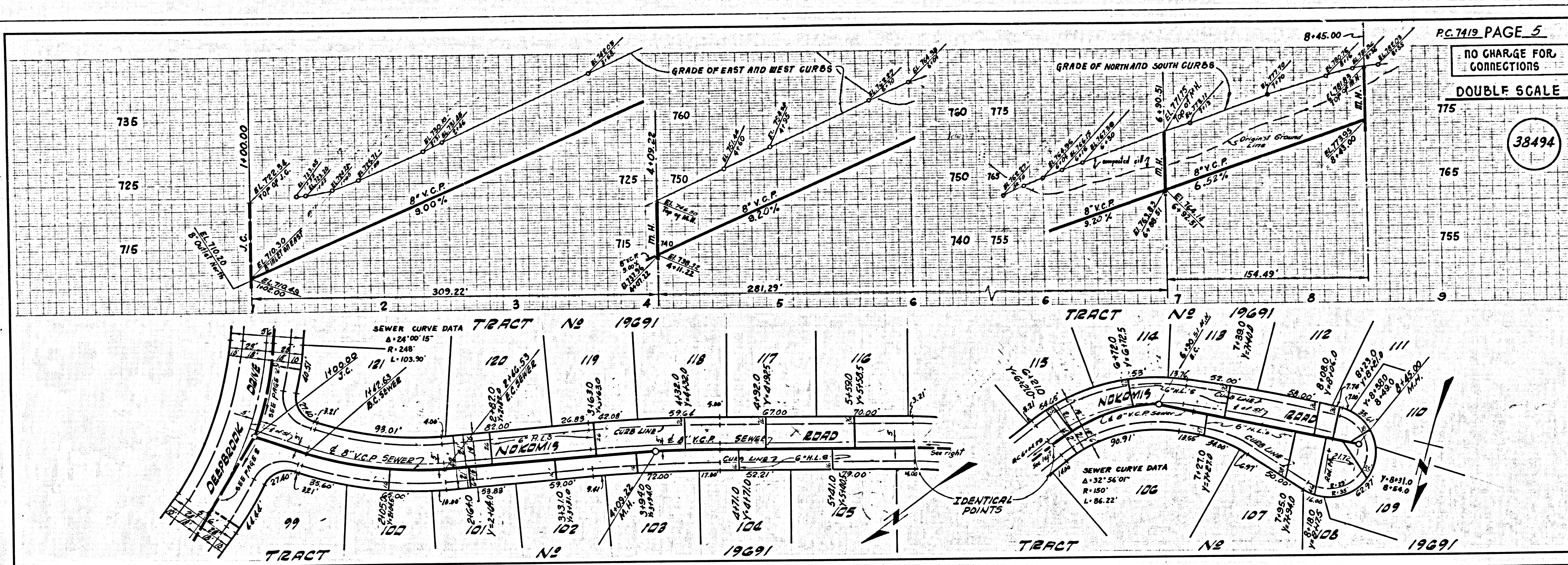
NO CONNECTIONS FOR THE DISPOSAL OF INDUSTRIAL WASTES SHALL BE MADE TO SEWERS SHOWN ON THESE DRAWINGS WITHOUT WRITTEN PERMISSION FROM THE CHIEF ENGINEER AND GENERAL MANAGER OF THE COUNTY SANITATION DISTRICTS.

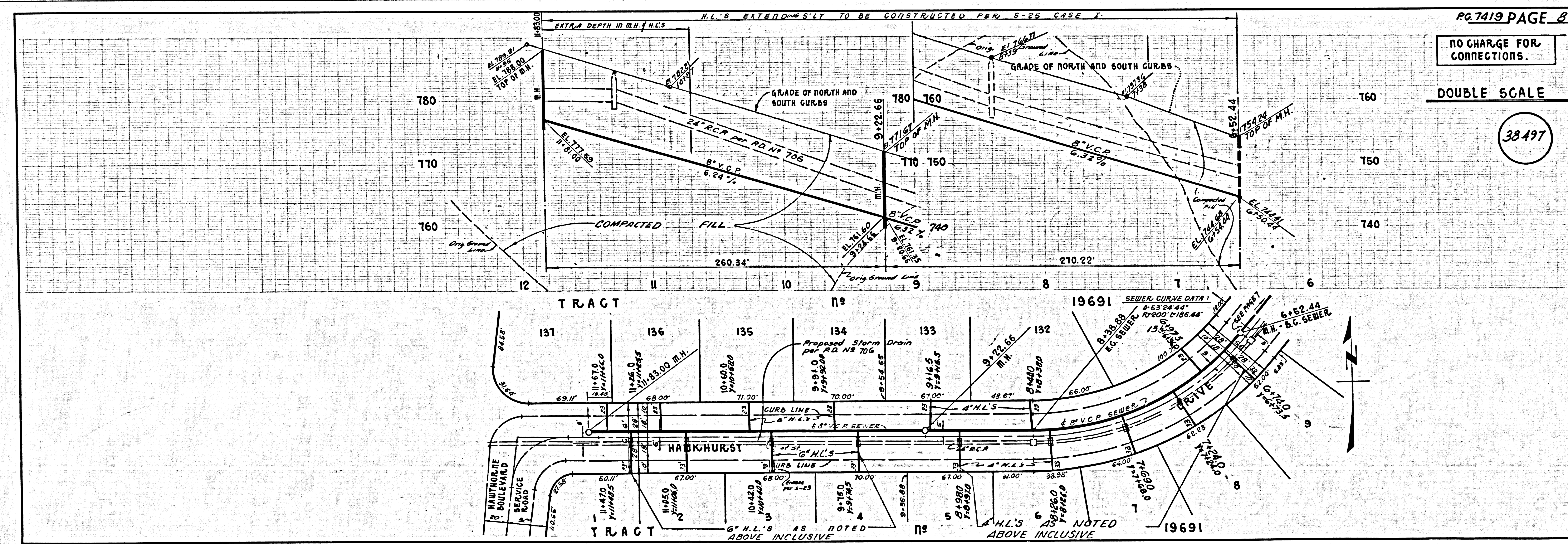
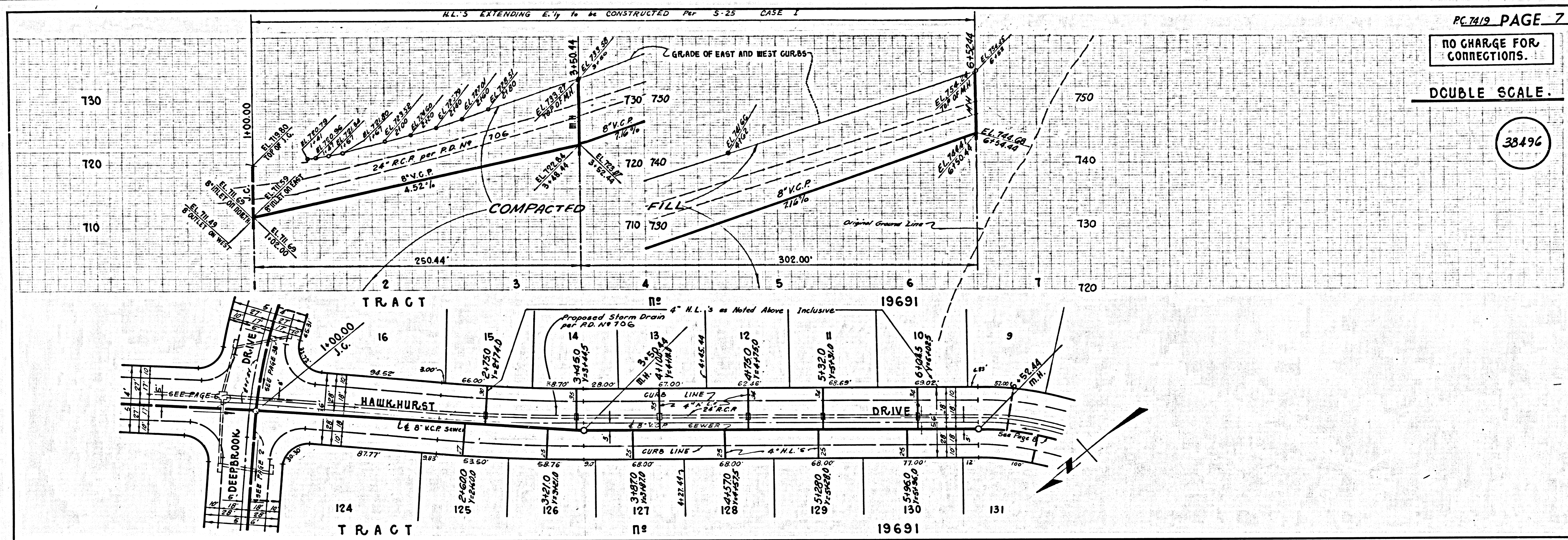
NOTE: GRADES TO WHICH THIS IMPROVEMENT IS TO BE CONSTRUCTED ARE SHOWN ON PLANS AND PROFILES. GRADE POINTS FOR FOOT OF CURBS, CENTER LINE OF STREETS, OR CENTER LINE OF ALLEYS ARE SHOWN BY CIRCLES ON PROFILES. AT ALL POINTS BETWEEN DESIGNATED ELEVATIONS ARE IN FEET ABOVE U.S.C. & G.S. MEAN SEA LEVEL DATUM OF 1929. THE DRAWING AND THE DATA HEREON ARE HEREBY MADE A PART OF THE SPECIFICATIONS. WORK SHALL BE CONSTRUCTED ACCORDING TO STANDARD SPECIFICATIONS DATED FEB. 22, 1962, ON FILE IN THE OFFICE OF THE COUNTY ENGINEER AND SHALL BE PROSECUTED ONLY IN THE PRESENCE OF THE COUNTY ENGINEER. APPROVAL OF THIS PLAN BY THE COUNTY OF LOS ANGELES DOES NOT CONSTITUTE A REPRESENTATION AS TO THE ACCURACY OF THE LOCATION OF OR THE EXISTENCE OR NON-EXISTENCE OF ANY UNDERGROUND UTILITY PIPE, OR STRUCTURE WITHIN THE LIMITS OF THIS PROJECT. THIS NOTE APPLIES TO ALL PAGES. IF WORK IS TO BE DONE IN A STATE HIGHWAY, A PERMIT MUST BE OBTAINED FROM THE STATE OF CALIFORNIA, DIVISION OF HIGHWAYS, 128 SOUTH SPRING STREET, LOS ANGELES, CALIFORNIA.

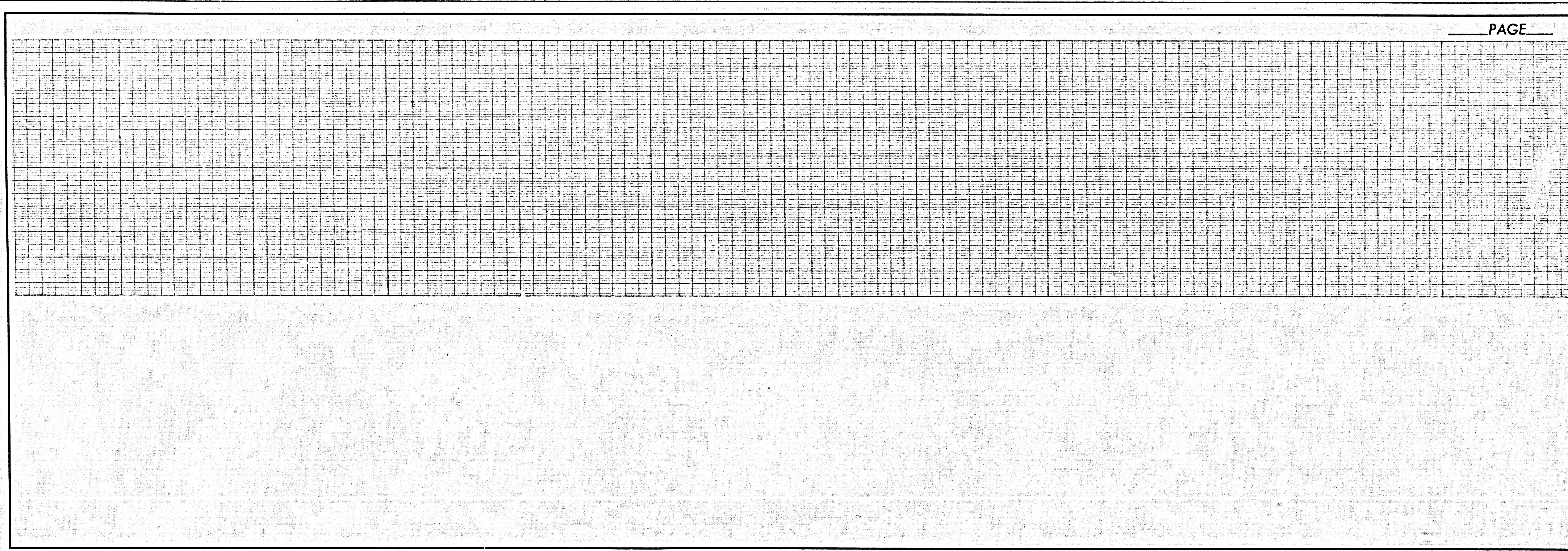
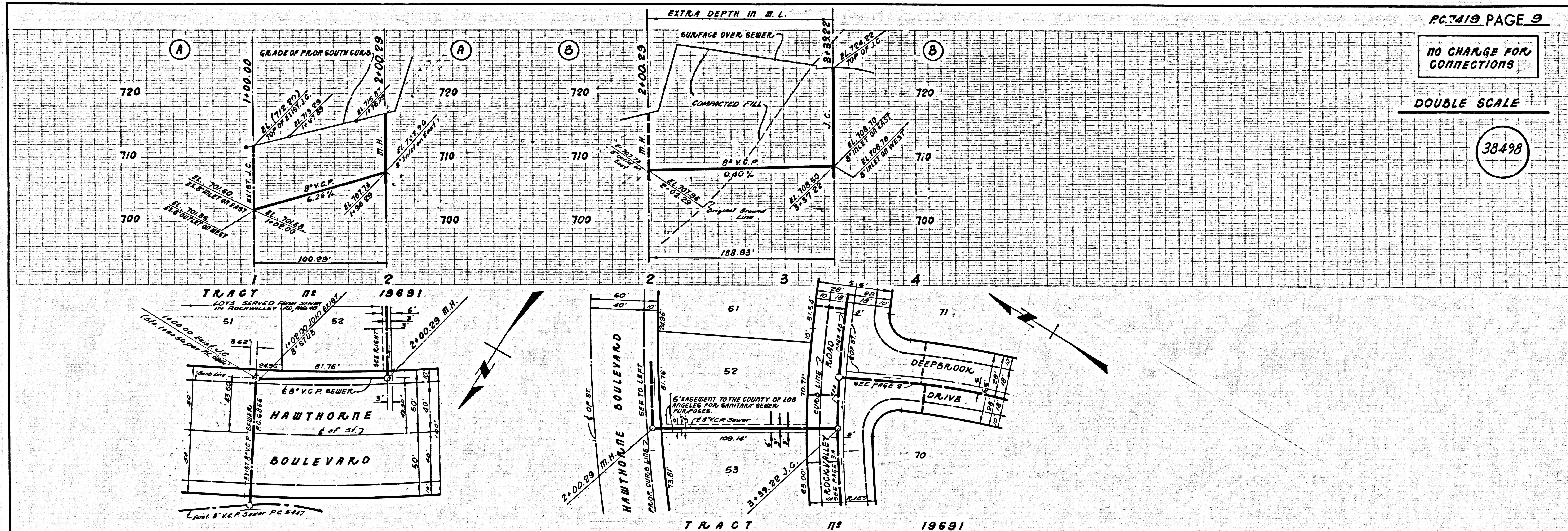
COUNTY OF LOS ANGELES, CALIFORNIA
 JOHN A. LAMBIE, COUNTY ENGINEER J. D. PARKHURST, CHIEF ENGINEER
 APPROVED BY: *Edward J. Valdes* ASSISTANT SANITATION ENGINEER APPROVED BY: *J. D. Parkhurst* CHIEF ENGINEER
 SUBMITTED BY: *Edward J. Valdes* REGIONAL ENGINEER
 CHECKED BY: *Edward J. Valdes* REG. C.E. NO. 10653

J.N. 0366.09



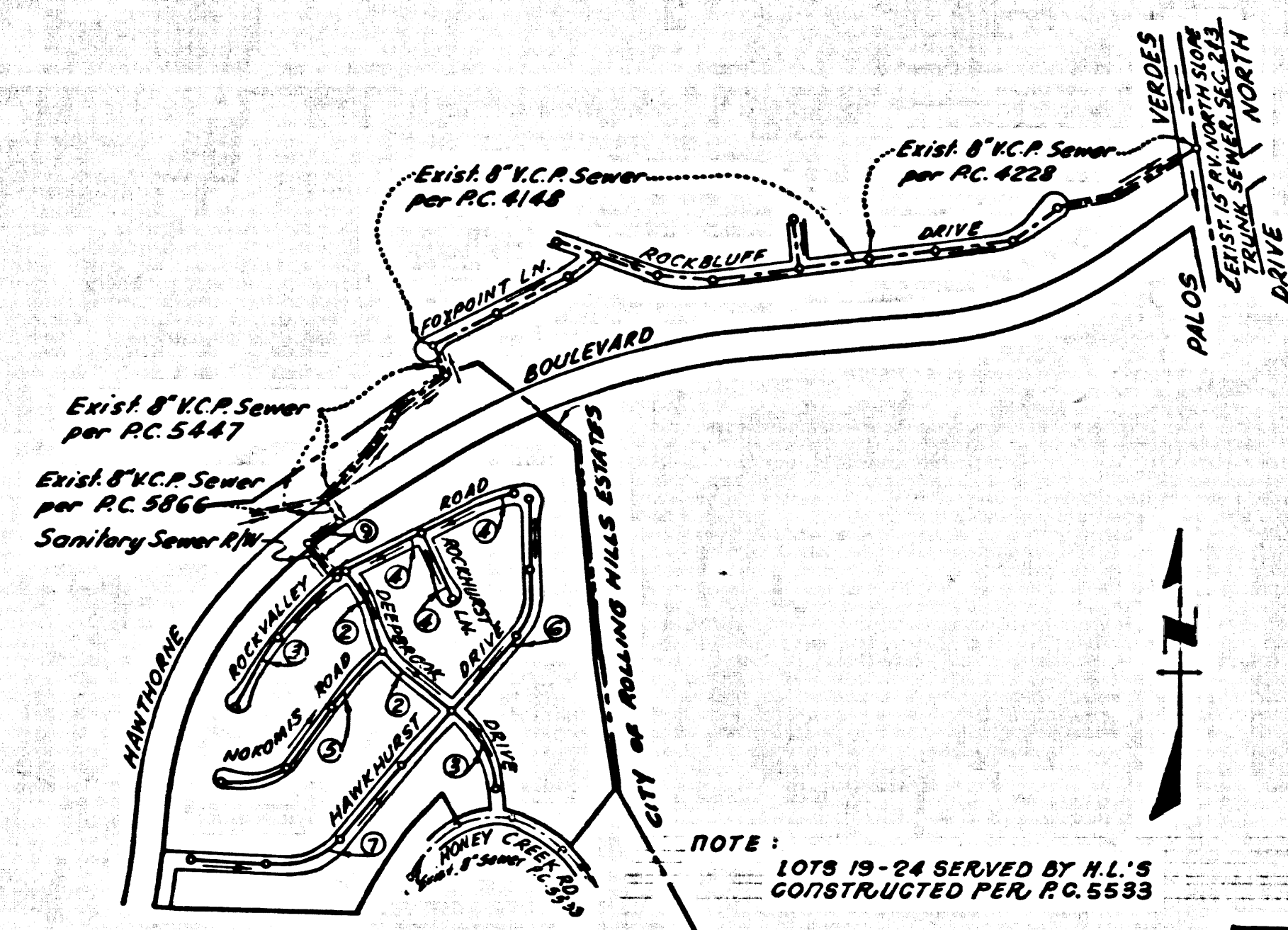






10001 001 10411

B.M. SY 6026 ELEV. 704.589
 R.D.B.M. Tag in conc. catch basin
 with drop inlet 40" x 20" E. Hawthorne
 Blvd. 1/2 mi. S. W. of Palos Verdes
 Drive North,
 Palos Verdes QUAD. 1960



INDEX MAP
 TRACT NO 19691
 P.C. 7419
 SCALE: 1" = 600'

REVISIONS - pages 788,
 Raised main line sewer grade from station
 3+52.44 to station 9+20.66. Reduced size
 of house laterals where not already con-
 structed from 6" to 4". Relocated house
 laterals to clear driveways.
 By Edward H. Valdez, P.C.E. 10523, Date 6-2-65

DOUBLE SCALE
 LOMITA BLDG. DIST. NO. 12.

PROFILE ALIGNMENT AND GRADE OF
 SANITARY SEWERS PAGE 1
 TO BE CONSTRUCTED IN

TRACT No 19691 38490
 PRIVATE CONTRACT NO. 7419

W.S. 27
 5 SHEETS, 9 PAGES
 SCALE: VERT. 1" = 8'
 HORIZ. 1" = 40' JULY, 1965

PREPARED IN THE OFFICES OF
JENNINGS ENGINEERING COMPANY
 1100 S. BEVERLY DRIVE, LOS ANGELES, CALIFORNIA.

By: *[Signature]*
 REG. C. E. No. 7858
 FOR LEGEND SEE PLAN NO. S-1

- NOTES:
1. PROVIDE STAKES ON THE PROPERTY LINE OR PROPERTY LINES PRODUCED AT RIGHT ANGLES TO THE SEWER LINE AT THE CENTER LINE OF EACH MANHOLE.
 2. NO REPRESENTATIVE OF THE COUNTY ENGINEER WILL SURVEY OR LAY OUT ANY PORTION OF THE WORK.
 3. THE PRIVATE ENGINEER SHALL FURNISH THE COUNTY ENGINEER WITH GRADE SHEETS AND STATIONING FOR ALL HOUSE LATERALS AND Y BRANCHES AND SHALL PROVIDE STAKES FOR THEM AT THEIR PROPER LOCATIONS WITH STATIONING PLAINLY MARKED. ALL HOUSE LATERALS SHALL BE CONSTRUCTED IN A STRAIGHT ALIGNMENT AT RIGHT ANGLES FROM THE MAIN LINE SEWER EXCEPT AS SHOWN ON THE PLANS. HOUSE LATERALS FROM CHIMNEYS SHALL NOT HAVE AN ANGLE OF LESS THAN 45° WITH THE MAIN LINE SEWER. ANY CHANGE IN ALIGNMENT SHALL BE REQUESTED IN WRITING BY THE PRIVATE ENGINEER.
 4. THE PRIVATE ENGINEER SHALL FURNISH THE HOUSE LATERAL DEPTH AT THE PROPERTY LINE BELOW THE TOP OF CURB ELEVATION FOR EACH HOUSE LATERAL ON THE GRADE SHEET.
 5. NO REVISIONS SHALL BE MADE IN THESE PLANS WITHOUT THE APPROVAL OF THE COUNTY ENGINEER.
 6. THE CONTRACTOR SHALL NOTIFY THE CONSTRUCTION DIVISION BY TELEPHONE, MADISON 9-4747, EXT. 8158, AT LEAST TWENTY-FOUR HOURS BEFORE STATING ANY WORK UNDER THE CONTRACT.
 7. MANHOLES SHALL BE BRICK SEWER STRUCTURES PER S-2 PER CALIF. CONC. MANHOLES PER S-6 OR S-6 MAY BE USED AS AN ALTERNATE IN LOCATIONS APPROVED BY THE COUNTY ENGINEER.
 8. USE STANDARD MANHOLE FRAMES AND COVERS, S-16 EXCEPT AS NOTED.
 9. MANHOLE TOPS IN UNIMPROVED RIGHTS-OF-WAY TO BE SIX INCHES ABOVE FINISHED GRADE.
 10. USE EXTRA STRENGTH PIPE. ALL PIPE IS STANDARD DEPTH EXCEPT AS NOTED.
 11. USE MECHANICAL COMPRESSION JOINTS FOR ALL V.C.P. JOINTS PER SPEC'S, SECT. 34, 44, 49.
 12. ALL Y'S TO BE CONSTRUCTED AT STATIONS AS NOTED.
 13. IF A POWER POLE IS WITHIN THREE FEET OF THE SEWER, THE SEWER SHALL BE ENCASED, PER S-23 CASE III, TWO FEET ON EACH SIDE FROM THE POINT OF INTERFERENCE.
 14. IF DURING THE COURSE OF CONSTRUCTION IT IS DETERMINED THAT THERE IS LESS THAN FOUR FEET OF COVER OVER THE TOP OF A MAIN LINE OR HOUSE LATERAL V.C.P. SEWER WHICH IS NOT INDICATED ON THE PLANS, THE PIPE SHALL BE ENCASED PER S-23 CASE III, UNLESS OTHERWISE APPROVED BY THE COUNTY ENGINEER.
 15. HOUSE LATERALS TO BE CONSTRUCTED WITH INVERTS AT PROJECT LINE... FEET BELOW CURB GRADE EXCEPT AS NOTED.
 16. RESURFACE ALL TRENCHES WITHIN PAVED AREAS TO MEET L.A. COUNTY ROAD DEPT. OR CALIFORNIA STATE HIGHWAY REQUIREMENTS IN ACCORDANCE WITH PERMITS.
 17. FOR ALLOWABLE LEAKAGE TEST USE FORMULA NO. 2, SPEC'S, SEC. 54.
 18. ALL STATE AND LOCAL TRENCH SAFETY ORDERS WILL BE RIGIDLY ENFORCED.
 19. CONSTRUCTION IN FILLED AREAS
 (a) AN ACCEPTABLE CERTIFICATION OF COMPACTION TEST RESULTS SHALL BE SUBMITTED TO THE CONSTRUCTION DIVISION. COMPACTION TESTS SHALL BE MADE IN ACCORDANCE WITH A.S.T.M. STANDARD METHOD OF TEST D-1557 - 61.
 (b) NO CONSTRUCTION IS PERMITTED IN FILLED AREAS WHERE THE RELATIVE DENSITY OF COMPACTION IS LESS THAN 90%.
 (c) IF THE RELATIVE DENSITY OF COMPACTION IS LESS THAN 90%, ALL MAIN LINE AND HOUSE LATERALS SHALL BE GRADED PER S-23 CASE III, WITH A SPECIAL SAFE COURSE PER S-23 CASE III.
 (d) IF THE RELATIVE DENSITY OF COMPACTION IS 90% OR GREATER, THE SPECIAL PROVISIONS (C) ARE NOT REQUIRED.

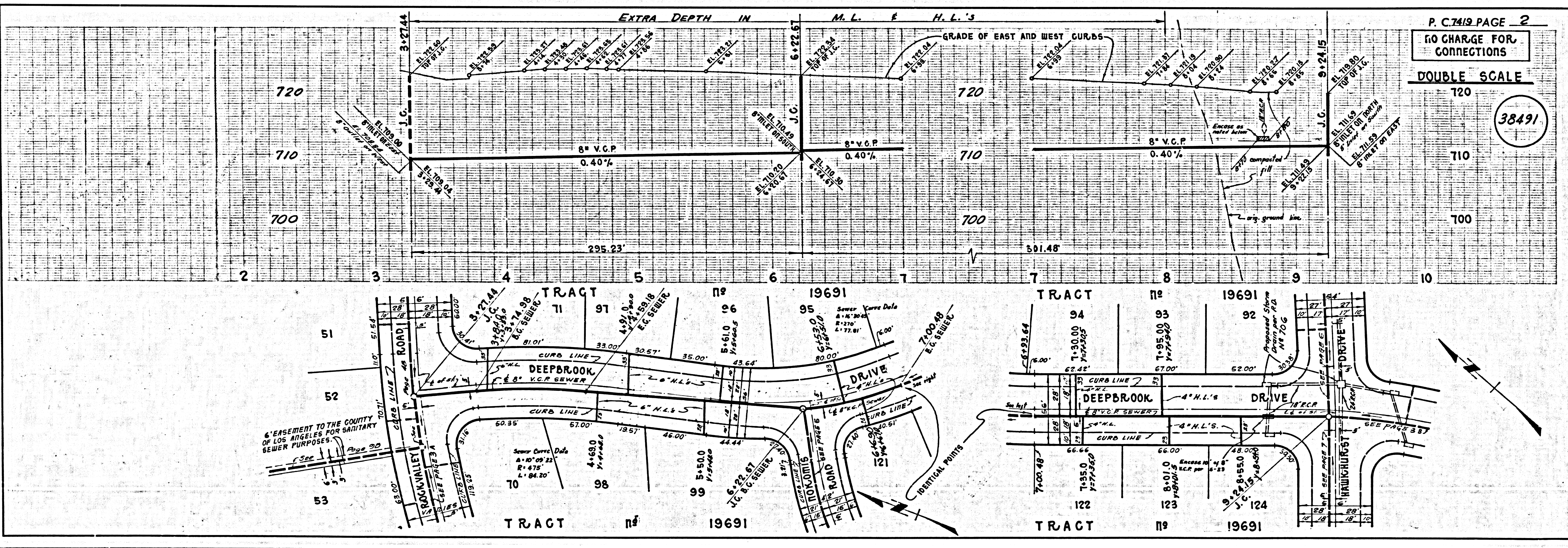
COLLECT CHARGES
 AS INDICATED
[Signature]

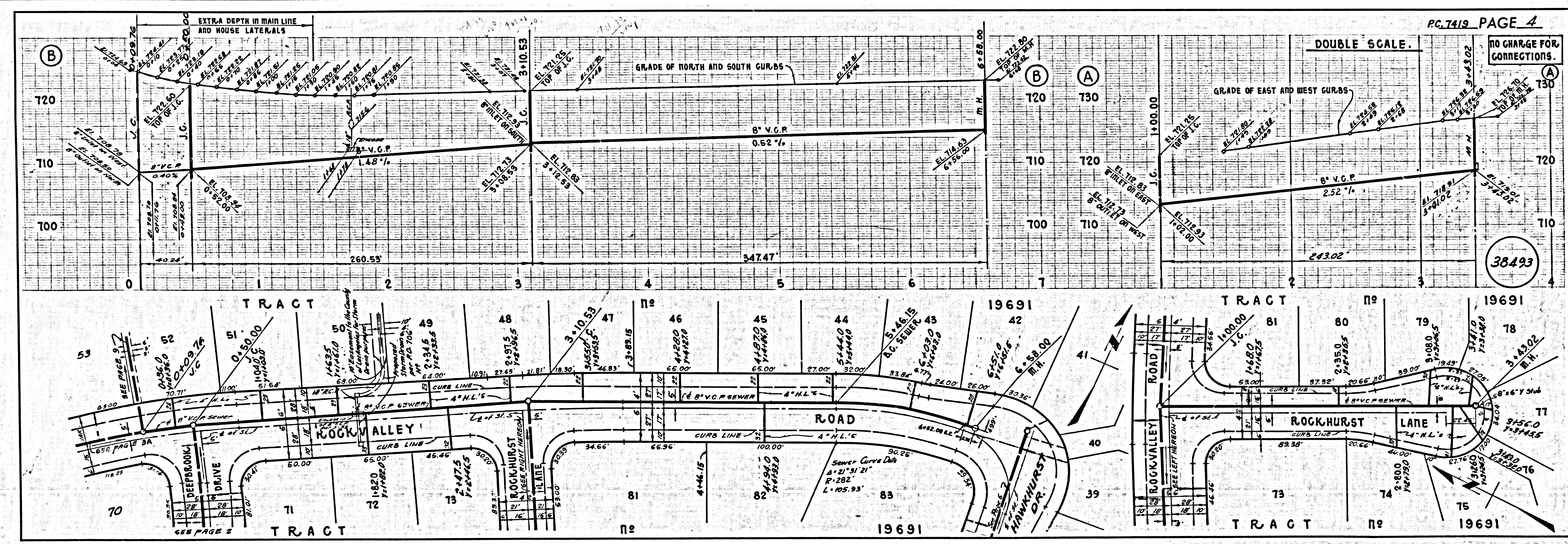
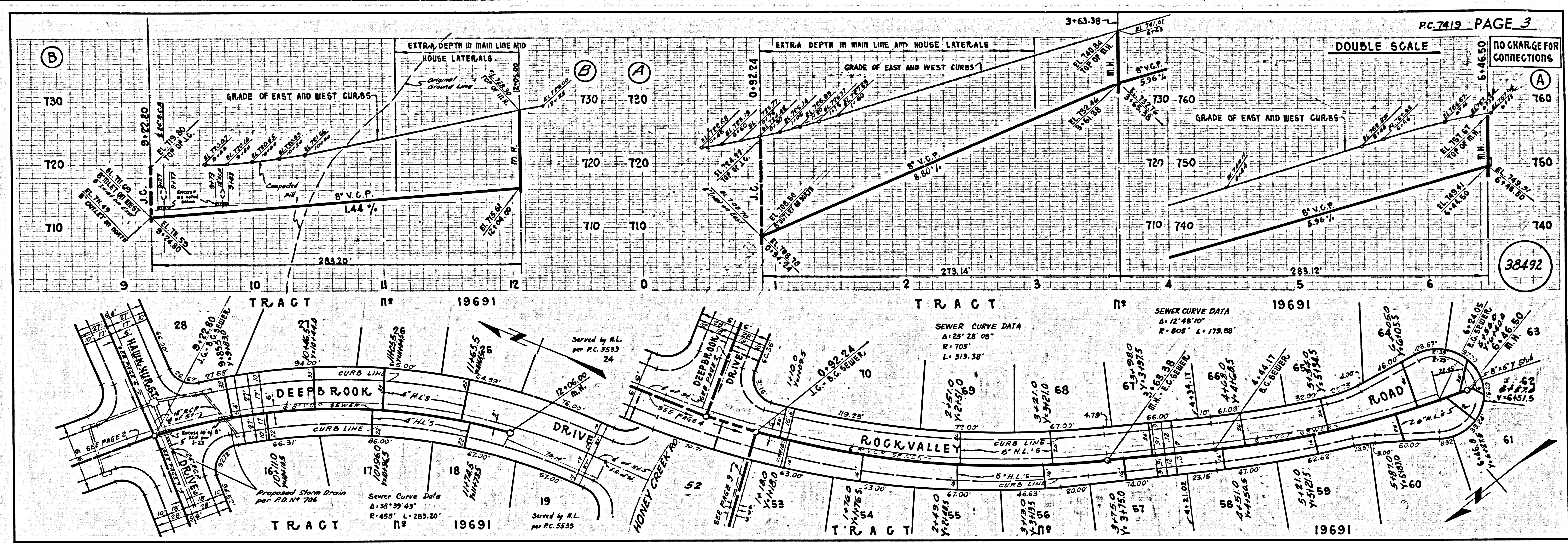
NO CONNECTIONS FOR THE DISPOSAL OF INDUSTRIAL WASTES SHALL BE MADE TO SEWERS SHOWN ON THESE DRAWINGS WITHOUT WRITTEN PERMISSION FROM THE CHIEF ENGINEER AND GENERAL MANAGER OF THE COUNTY SANITATION DISTRICTS.

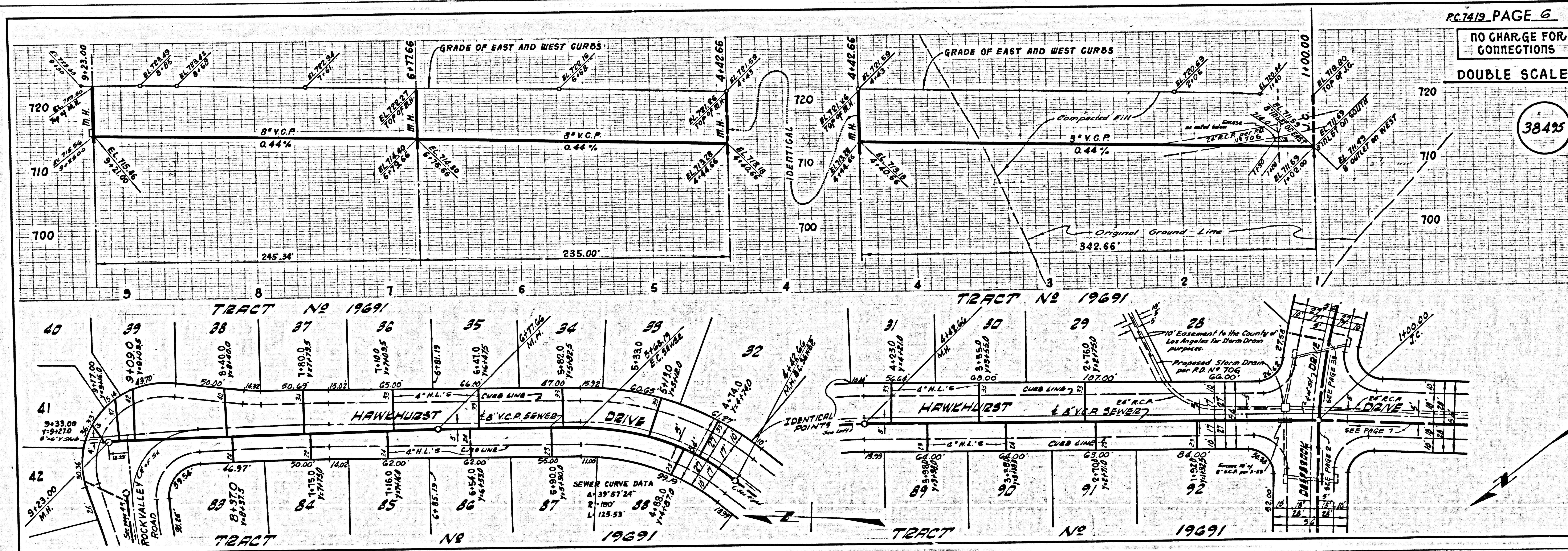
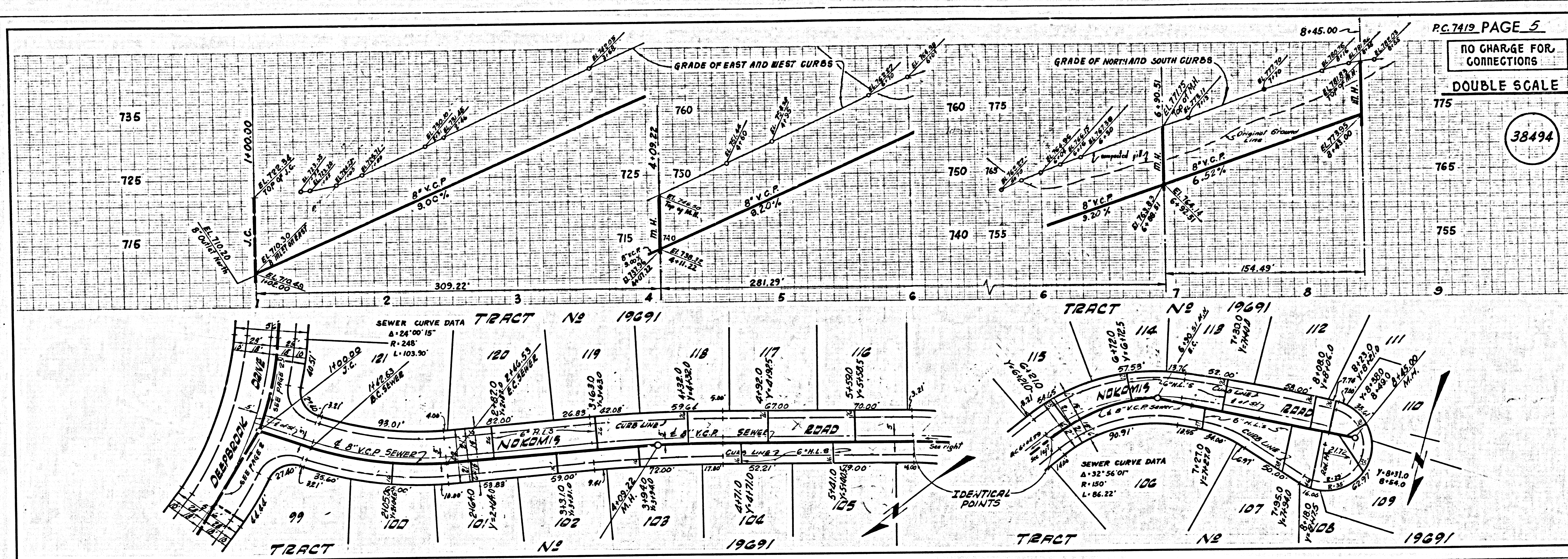
NOTE:
 GRADES TO WHICH THIS IMPROVEMENT IS TO BE CONSTRUCTED ARE SHOWN ON PLANS AND PROFILES. GRADE POINTS FOR TOP OF CURBS, CENTER LINE OF STREETS, OR CENTER LINE OF ALLEYS ARE SHOWN BY CIRCLES ON PROFILES. AT ALL POINTS BETWEEN DESIGNATED POINTS THE GRADE SHALL BE ESTABLISHED SO AS TO CONFORM TO A STRAIGHT LINE DRAWN BETWEEN SAID DESIGNATED POINTS. ELEVATIONS ARE IN FEET ABOVE U.S.C. & G.S. MEAN LEVEL DATUM OF 1929. THIS DRAWING AND THE DATA HEREON ARE HEREBY MADE A PART OF THE SPECIFICATIONS. WORK SHALL BE CONSTRUCTED ACCORDING TO STANDARD SPECIFICATIONS DATED FEB. 22, 1965, ON FILE IN THE OFFICE OF THE COUNTY ENGINEER AND SHALL BE PROSECUTED ONLY IN THE PRESENCE OF THE COUNTY ENGINEER. BEFORE WORK CAN BE STARTED, THE CONTRACTOR MUST OBTAIN A PERMIT TO EXCAVATE IN COUNTY STREETS FROM THE L.A. COUNTY ROAD DEPT., DISTRICT OFFICE NO. 1 AND PAY A FEE TO THE COUNTY ENGINEER, ROOM 300, COUNTY ENGINEERING BUILDING, 100 WEST SECOND STREET OR PALOS VERDES DRIVE, PALOS VERDES, REGIONAL OFFICE, SUFFICIENT TO COVER THE COST OF CONSTRUCTION INSPECTION AND RECORD PLANS. APPROVAL OF THIS PLAN BY THE COUNTY OF LOS ANGELES DOES NOT CONSTITUTE A REPRESENTATION AS TO THE ACCURACY OF THE LOCATION OF OR THE EXISTENCE OR NON-EXISTENCE OF ANY UNDERGROUND UTILITY PIPE, OR STRUCTURE WITHIN THE LIMITS OF THIS PROJECT. THIS NOTE APPLIES TO ALL PAGES. IF WORK IS TO BE DONE IN A STATE HIGHWAY, A PERMIT MUST BE OBTAINED FROM THE STATE OF CALIFORNIA, DIVISION OF HIGHWAYS, 120 SOUTH SPRING STREET, LOS ANGELES, CALIFORNIA.

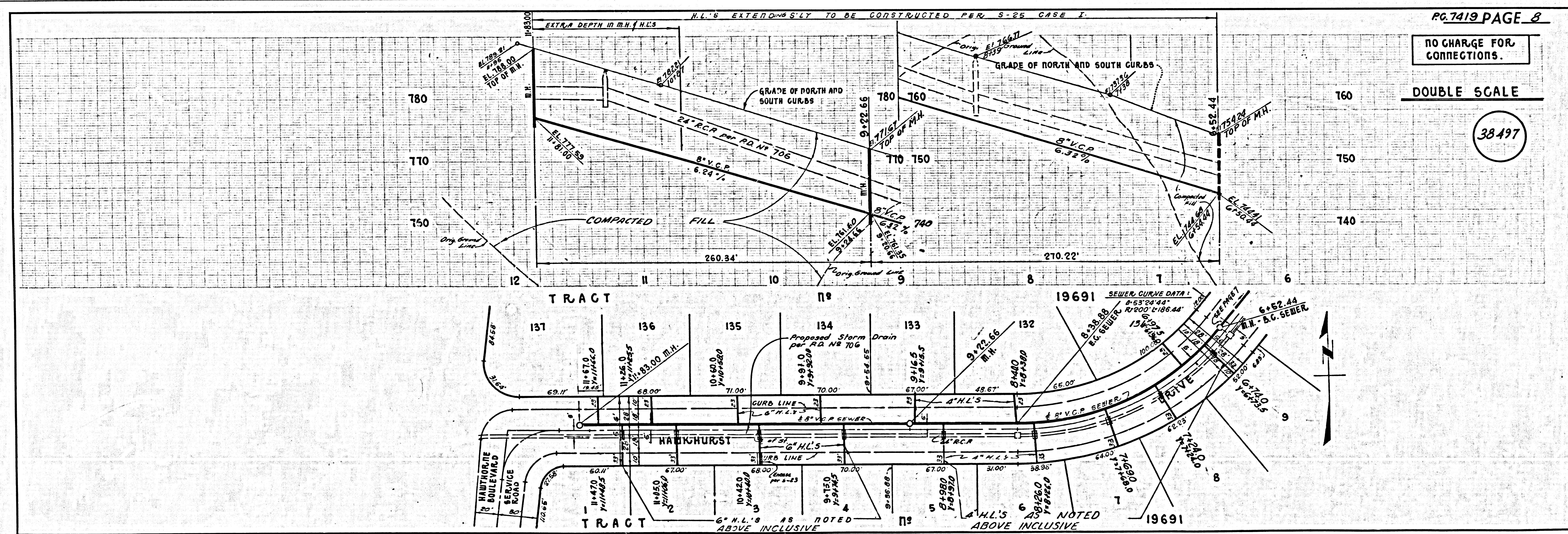
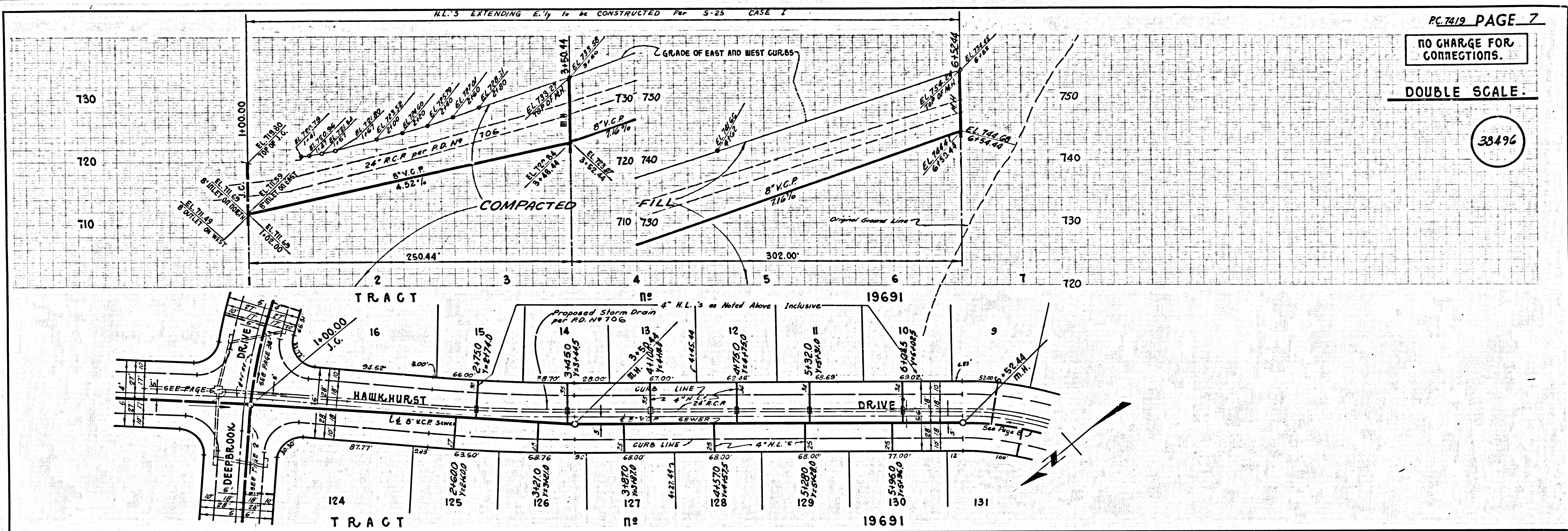
COUNTY OF LOS ANGELES, CALIFORNIA
 JOHN A. LAMBIE, COUNTY ENGINEER J. D. PARKHURST, CHIEF ENGINEER
 CO. ENR. REG. NO. 106533
 APPROVED BY: *[Signature]* ASSISTANT SANITATION ENGINEER APPROVED BY: *[Signature]* OFFICE ENGINEER
 SUBMITTED BY: *[Signature]* REGIONAL ENGINEER
 CHECKED BY: *[Signature]* REG. C. E. NO. 106533

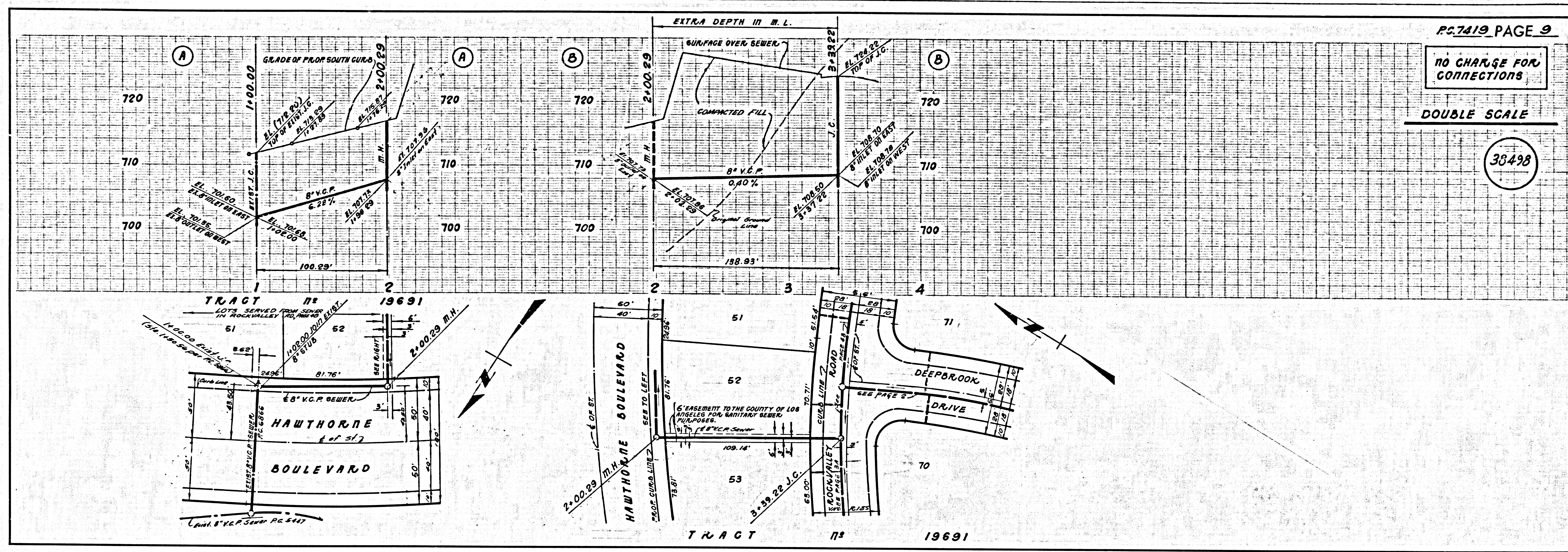
J.N. 0366.09











PAGE

CIT. O. I.
100101
10411