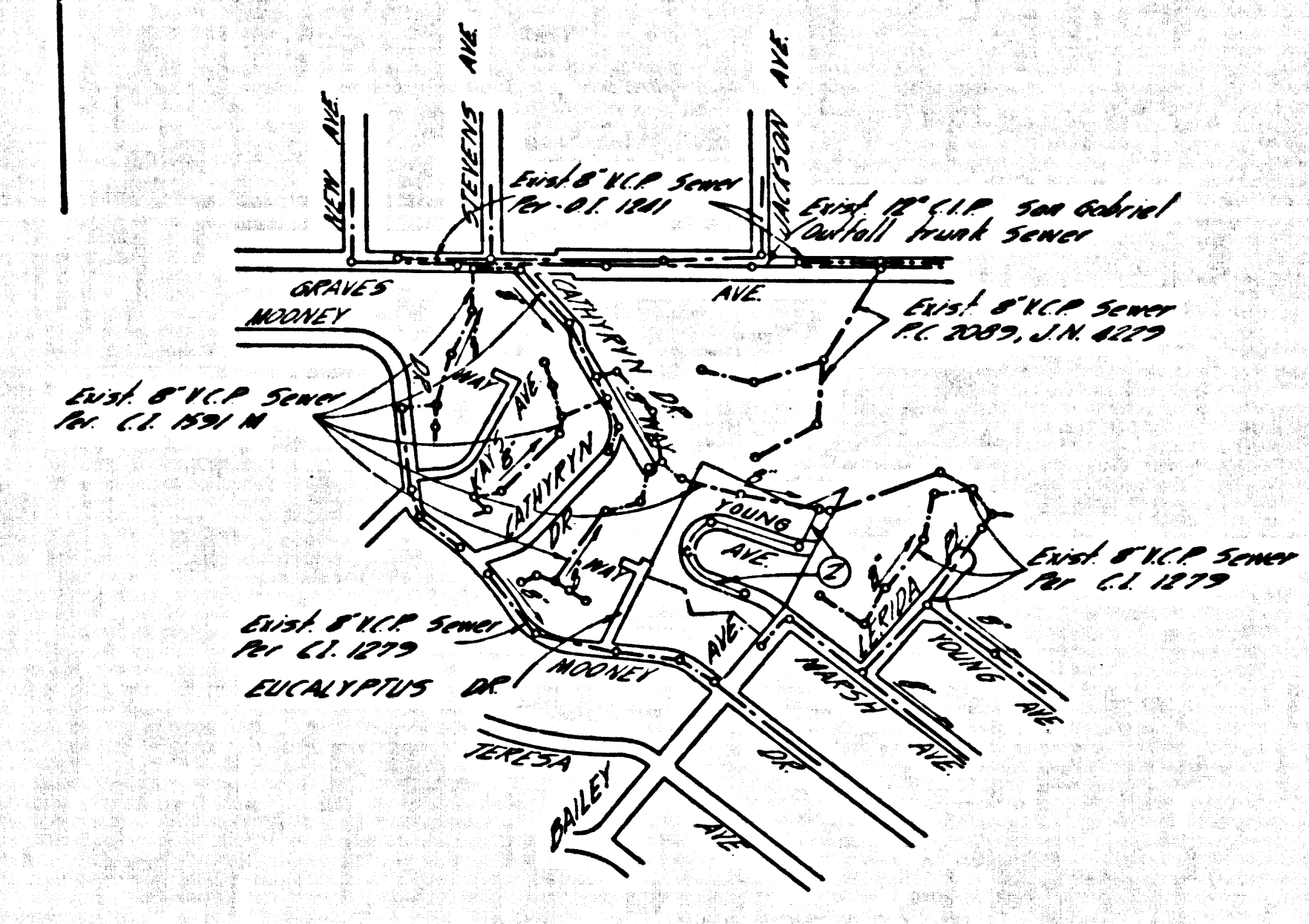


B.M. 516738 ELEV. 345.938
 1/4" in NE corner of conc. drive to
 base of 1557 of SW corner of Palms
 Grande Dr. - nearest to 2015 - 21st St. E. corner
 PINEH Q. 19 60



INDEX MAP
 TRACT NO. 30359
 P.C. 7422
 SCALE 1" = 600'

DOUBLE SCALE
 TEMPLE CITY BLDG. DIST. NO. 5

PROFILE ALIGNMENT AND GRADE OF
 SANITARY SEWERS PAGE 1

TRACT NO. 30359

PRIVATE CONTRACT NO. 7422

W.S. 36

1 SHEET 2 PAGES

38650

SCALE: VERT. 1" = 8'
 HORIZ. 1" = 40'

JULY, 1965
 PREPARED IN THE OFFICES OF
 EVANS & ASSOCIATES, INC.
 1543 W. GARVEY AVE. WEST COVINA, CALIF. 91791
 REG. C. E. NO. 18222

FOR LEGEND SEE PLAN NO. S-64

- NOTES:
1. PROVIDE STAKES ON THE PROPERTY LINE OR PROPERTY LINES PRODUCED AT RIGHT ANGLES TO THE SEWER LINE AT THE CENTER LINE OF EACH MANHOLE.
 2. NO REPRESENTATIVE OF THE COUNTY ENGINEER WILL SURVEY OR LAY OUT ANY PORTION OF THE WORK.
 3. THE PRIVATE ENGINEER SHALL FURNISH THE COUNTY ENGINEER WITH GRADE SHEETS AND STATIONING FOR ALL HOUSE LATERALS AND TRENCHES AND SHALL PROVIDE STAKES FOR THEM AT THEIR PROPER LOCATIONS WITH STATIONING PLAINLY MARKED. ALL HOUSE LATERALS SHALL BE CONSTRUCTED AT A STRAIGHT ALIGNMENT AT RIGHT ANGLES FROM THE MAIN LINE SEWER EXCEPT AS SHOWN ON THE PLANS. HOUSE LATERALS FROM CHIMNEYS SHALL NOT HAVE AN ANGLE OF LESS THAN 45° WITH THE MAIN LINE SEWER. ANY CHANGE IN ALIGNMENT SHALL BE REQUESTED IN WRITING BY THE PRIVATE ENGINEER.
 4. THE PRIVATE ENGINEER SHALL FURNISH THE HOUSE LATERAL DEPTH AT THE PROPERTY LINE BELOW THE TOP OF CURB ELEVATION FOR EACH HOUSE LATERAL ON THE GRADE SHEET.
 5. NO REVISIONS SHALL BE MADE IN THESE PLANS WITHOUT THE APPROVAL OF THE COUNTY ENGINEER.
 6. THE CONTRACTOR SHALL NOTIFY THE CONSTRUCTION DIVISION BY TELEPHONE, MADISON 9-0747, EXT. 8158, AT LEAST TWENTY-FOUR HOURS BEFORE STARTING ANY WORK UNDER THIS CONTRACT.
 7. MANHOLES SHALL BE BRICK SEWER STRUCTURES PER S-5 PRECAST CONCRETE MANHOLES PER S-5 OR S-6. MAY BE USED AS AN ALTERNATE IN LOCATIONS APPROVED BY THE COUNTY ENGINEER.
 8. USE STANDARD MANHOLE FRAMES AND COVERS, S-7.
 9. MANHOLE TOPS IN UNIMPROVED RIGHTS-OF-WAY TO BE SIX INCHES ABOVE FINISHED GRADE.
 10. USE EXTRA STRENGTH PIPE, ALL PIPE IS STANDARD DEPTH EXCEPT AS NOTED.
 11. USE MECHANICAL COMPRESSION JOINTS FOR ALL V.C.P. JOINTS PER SPEC'S, SECS. 34, 48 & 49.
 12. WHERE EVER GROUND WATER IS ENCOUNTERED DURING THE CONSTRUCTION OF THE SEWER, THE V.C.P. JOINTS SHALL BE OF MECHANICAL COMPRESSION JOINTS PER SPEC'S, SEC. 34, 48 & 49.
 13. IF A POWER POLE IS WITHIN THREE FEET OF THE SEWER, THE SEWER SHALL BE ENCASED, PER S-23 TWO FEET ON EITHER SIDE FROM THE POINT OF INTERFERENCE.
 14. IF DURING THE COURSE OF CONSTRUCTION IT IS DETERMINED THAT THERE IS LESS THAN FOUR FEET OF COVER OVER THE TOP OF A MAIN LINE OR HOUSE LATERAL V.C.P. SEWER WHICH IS NOT INDICATED ON THE PLANS, THE PIPE SHALL BE ENCASED PER S-23 UNLESS OTHERWISE APPROVED BY THE COUNTY ENGINEER.
 15. HOUSE LATERALS TO BE CONSTRUCTED WITH INVERTS AT PROPERTY LINE... 6" FEET BELOW CURB GRADE EXCEPT AS NOTED.
 16. REINFORCE ALL TRENCHES WITHIN PAVED AREAS TO MEET L.A. COUNTY ROAD DEPT. OR CALIFORNIA STATE HIGHWAY REQUIREMENTS IN ACCORDANCE WITH SEWERAGE DEPARTMENT SPECIFICATIONS.
 17. FOR ALLOWABLE LEAKAGE TEST USE FORMULA NO. 1, 2, 3, 4, 5, 6, 7, 8, 9, 10, 11, 12, 13, 14, 15, 16, 17, 18, 19, 20, 21, 22, 23, 24.
 18. ALL STATE AND LOCAL TRENCH SAFETY ORDERS WILL BE RIGIDLY ENFORCED.
 19. CONSTRUCTION IN HILL AREAS:
 (a) AN ACCEPTABLE CERTIFICATION OF COMPACTION TEST RESULTS SHALL BE SUBMITTED TO THE COUNTY ENGINEER WITHIN 15 DAYS AFTER THE METHOD OF TEST IS MADE.
 (b) NO CONSTRUCTION IS PERMITTED IN HILLED AREAS UNLESS THE RELATIVE DENSITY OF COMPACTION IS AT LEAST 90%.
 (c) ALL EXCAVATION DEPTHS OF COMPACTION IS LESS THAN 20" ALL MAIN AND HOUSE LATERALS SHALL BE GRADED PER SPEC'S OF HAVE A SPECIAL CASE COVERED PER S-11.
 (d) IF NO RELATIVE DENSITY OF COMPACTION IS OBTAINED THAN 90%, SPECIAL PROVISIONS SHALL BE MADE TO BE MADE IN PLACE BEFORE CONSTRUCTION OF SEWER.

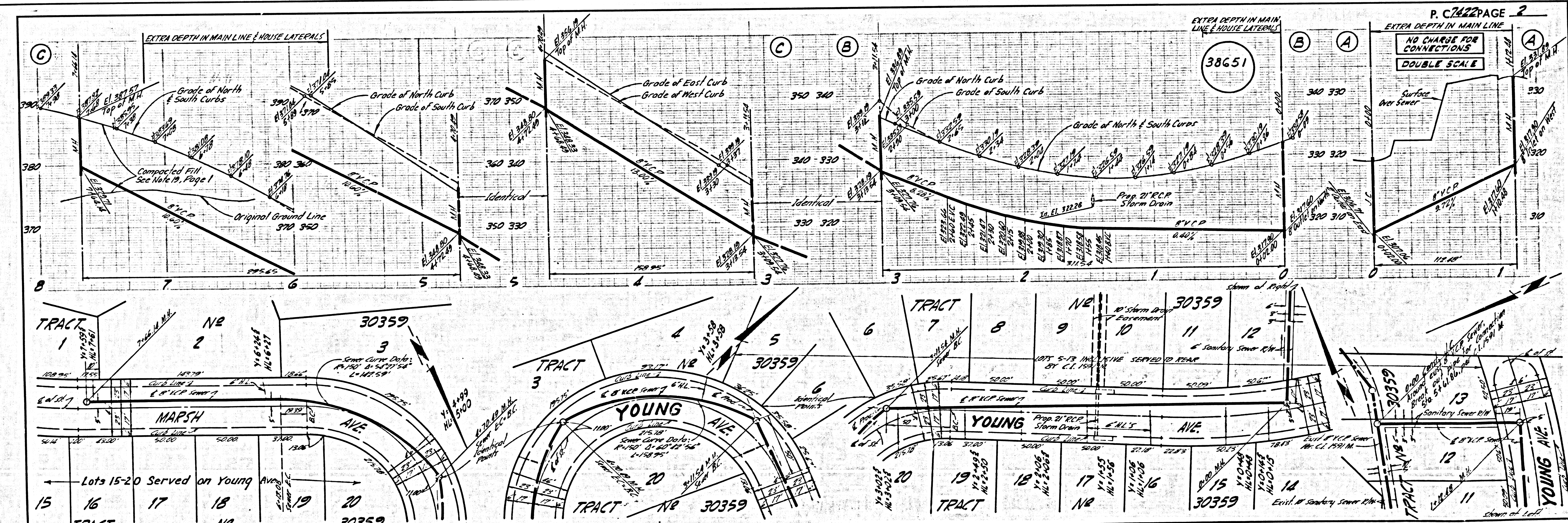
NOTES:
 GRADES TO WHICH THIS IMPROVEMENT IS TO BE CONSTRUCTED ARE SHOWN ON PLANS AND PROFILES. GRADE POINTS FOR TOP OF CURBS, CENTER LINE OF STREETS, OR CENTER LINE OF ALLEYS ARE SHOWN BY CIRCLES ON PROFILES. ALL POINTS BETWEEN DESIGNATED POINTS THE GRADE SHALL BE ESTABLISHED AS TO CORNERS TO A STRAIGHT LINE DRAWN BETWEEN SAID DESIGNATED POINTS. ELEVATIONS ARE IN FEET ABOVE U.S.C. & G.S. SEA LEVEL DATUM OF 1929.
 THIS DRAWING AND THE DATA HERETOBY MADE A PART OF THE SPECIFICATIONS.
 WORK SHALL BE CONSTRUCTED ACCORDING TO STANDARD SPECIFICATIONS DATED JULY 22, 1962, ON FILE IN THE OFFICE OF THE COUNTY ENGINEER AND SHALL BE PROTECTED ONLY IN THE PRESENCE OF THE COUNTY ENGINEER.
 BEFORE WORK CAN BE STARTED, THE CONTRACTOR MUST OBTAIN A PERMIT TO EXCAVATE IN COUNTY STREETS FROM THE L.A. COUNTY ROAD DEPT., DISTRICT OFFICE NO. 1, 2, 3, 4, 5, 6, 7, 8, 9, 10, 11, 12, 13, 14, 15, 16, 17, 18, 19, 20, COUNTY ENGINEERING BUILDING, 808 WEST SECOND STREET, SAN GABRIEL VALLEY REGIONAL OFFICE, SUFFICIENT TO COVER THE COST OF CONSTRUCTION INSPECTION AND SECOND PLANS.
 APPROVAL OF THIS PLAN BY THE COUNTY OF LOS ANGELES DOES NOT CONSTITUTE A REPRESENTATION AS TO THE ACCURACY OF THE LOCATION OF OR THE EXISTENCE OR NON-EXISTENCE OF ANY UNDERGROUND UTILITY PIPE, OR STRUCTURE WITHIN THE LIMITS OF THIS PROJECT. THIS NOTE APPLIES TO ALL PAGES.
 IF WORK IS TO BE DONE IN A STATE HIGHWAY, A PERMIT MUST BE OBTAINED FROM THE STATE OF CALIFORNIA, DIVISION OF HIGHWAYS, 126 SOUTH SPRING STREET, LOS ANGELES, CALIFORNIA.

COUNTY OF LOS ANGELES, CALIFORNIA
 JOHN A. LAMBE, COUNTY ENGINEER J. D. PARKHURST, CHIEF ENGINEER
 CO. SAN. DIST. NO. 5
 APPROVED BY: [Signature] APPROVED BY: [Signature]
 ASSISTANT COUNTY ENGINEER OFFICE ENGINEER
 SUBMITTED BY: [Signature]
 REGIONAL ENGINEER
 CHECKED BY: [Signature]
 REG. C.E. NO. 7732

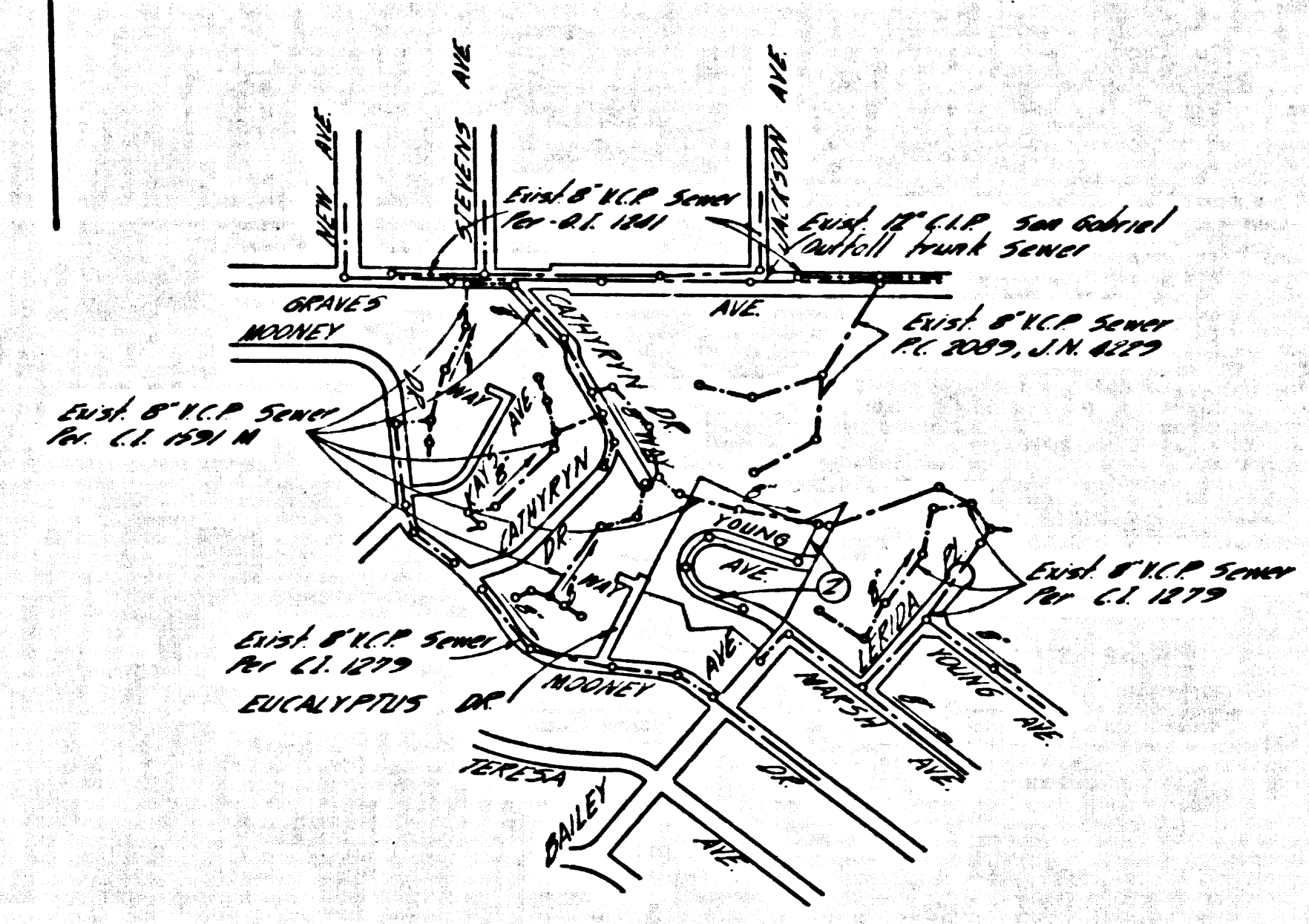
COLLECT CHARGES AS INDICATED
 W. G. Jan 9/22/65

NO GUARANTEES FOR THE DISPOSAL OF INDUSTRIAL WASTES SHALL BE MADE TO SEWER SYSTEM ON THESE DRAWINGS WITHOUT WRITTEN PERMISSION FROM THE CHIEF ENGINEER AND GENERAL MANAGER OF THE COUNTY SANITATION DISTRICTS.

J.N. 0366.10



B.M. SY 6738 ELEV. 345.938
 157' in N.E. corner of corner drive by
 Sec. 10, 1957 of S.W. corner of Palmdale
 Grande Dr + Marney Dr. 80' S. + 20' W. of Int.
 PINETA QUAD. 19 60



INDEX MAP
 TRACT NO 30359
 P.C. 7422
 SCALE 1" = 600'

DOUBLE SCALE
 TEMPLE CITY BLDG. DIST. NO. 5

PROFILE ALIGNMENT AND GRADE OF P.C. 7422
 SANITARY SEWERS PAGE 1
 TO BE CONSTRUCTED IN

TRACT NO 30359
 PRIVATE CONTRACT NO. 7422

W.S. 36
 1 SHEET, 2 PAGES
 SCALE: VERT. 1" = 8'
 HORIZ. 1" = 40'
 JULY, 1965

PREPARED IN THE OFFICES OF
 EVANS & ASSOCIATES, INC.
 1543 N. GARVEY AVE WEST COVINA, CALIF 91791-4201
 BY: [Signature]
 REG. C. E. NO. 18822

FOR LEGEND SEE PLAN NO. S-64

NOTE:
 GRADES TO WHICH THIS IMPROVEMENT IS TO BE CONSTRUCTED ARE SHOWN ON PLANS AND PROFILES. GRADE POINTS FOR TOP OF CURBS, CENTER LINE OF STREETS, OR CENTER LINE OF ALLEYS ARE SHOWN BY CIRCLES ON PROFILES. AT ALL POINTS BETWEEN DESIGNATED POINTS THE GRADE SHALL BE ESTABLISHED SO AS TO CONFORM TO A STRAIGHT LINE DRAWN BETWEEN SAID DESIGNATED POINTS. ELEVATIONS ARE IN FEET ABOVE U.S.C. & G.S. SEA LEVEL DATUM OF 1929.
 THIS DRAWING AND THE DATA HEREON ARE HEREBY MADE A PART OF THE SPECIFICATIONS.
 WORK SHALL BE CONSTRUCTED ACCORDING TO STANDARD SPECIFICATIONS DATED 1962, ON FILE IN THE OFFICE OF THE COUNTY ENGINEER AND SHALL BE PROSECUTED ONLY IN THE PRESENCE OF THE COUNTY ENGINEER.
 BEFORE WORK CAN BE STARTED, THE CONTRACTOR MUST OBTAIN A PERMIT TO EXCAVATE IN COUNTY STREETS FROM THE L.A. COUNTY ROAD DEPT., DISTRICT OFFICE NO. 5, AND PAY A FEE TO THE COUNTY ENGINEER, ROOM 205, COUNTY ENGINEERING BUILDING, 108 WEST SECOND STREET, SAN GABRIEL VALLEY, REGIONAL OFFICE, SUFFICIENT TO COVER THE COST OF CONSTRUCTION INSPECTION AND RECORD PLANS.
 APPROVAL OF THIS PLAN BY THE COUNTY OF LOS ANGELES DOES NOT CONSTITUTE A REPRESENTATION AS TO THE ACCURACY OF THE LOCATION OF OR THE EXISTENCE OR NON-EXISTENCE OF ANY UNDERGROUND UTILITY PIPE, OR STRUCTURE WITHIN THE LIMITS OF THE PROJECT. THIS NOTE APPLIES TO ALL PAGES.
 IF WORK IS TO BE DONE ON A STATE HIGHWAY, A PERMIT MUST BE OBTAINED FROM THE STATE OF CALIFORNIA, DIVISION OF HIGHWAYS, 126 SOUTH SPRING STREET, LOS ANGELES, CALIFORNIA.

1. PROFILE STAGES ON THE PROPERTY LINE OR PROPERTY LINES PRODUCED AT RIGHT ANGLES TO THE SEWER LINE AT THE CENTER LINE OF EACH MANHOLE.
2. NO REPRESENTATIVE OF THE COUNTY ENGINEER WILL SURVEY OR LAY OUT ANY PORTION OF THE WORK.
3. THE PRIVATE ENGINEER SHALL FURNISH THE COUNTY ENGINEER WITH GRADE SHEETS AND STATIONING FOR ALL HOUSE LATERALS AND Y BRANCHES AND SHALL PROVIDE STAKES FOR THEM AT THEIR PROPER LOCATIONS WITH STATIONING PLAINLY MARKED. ALL HOUSE LATERALS SHALL BE CONSTRUCTED IN A STRAIGHT ALIGNMENT AT RIGHT ANGLES FROM THE MAIN LINE SEWER EXCEPT AS SHOWN ON THE PLANS. HOUSE LATERALS FROM CHIMNEYS SHALL NOT HAVE AN ANGLE OF LESS THAN 45° WITH THE MAIN LINE SEWER. ANY CHANGE IN ALIGNMENT SHALL BE INDICATED BY WITHDRAWS BY THE PRIVATE ENGINEER.
4. THE PRIVATE ENGINEER SHALL FURNISH THE HOUSE LATERAL DEPTH AT THE PROPERTY LINE BELOW THE TOP OF CURB ELEVATION FOR EACH HOUSE LATERAL ON THE GRADE SHEET.
5. NO REVISIONS SHALL BE MADE IN THESE PLANS WITHOUT THE APPROVAL OF THE COUNTY ENGINEER.
6. THE CONTRACTOR SHALL NOTIFY THE CONSTRUCTION DIVISION BY TELEPHONE, MADISON 9-4747, EXT. 8155, AT LEAST TWENTY-FOUR HOURS BEFORE STARTING ANY WORK UNDER THIS CONTRACT.
7. MANHOLES SHALL BE BRICK SEWER STRUCTURES PER S-5 PRECAST CONCRETE MANHOLES PER S-5 OR S-6 MAY BE USED AS AN ALTERNATE IN LOCATIONS APPROVED BY THE COUNTY ENGINEER.
8. USE STANDARD MANHOLE FRAMES AND COVERS, S-75.
9. MANHOLE TOPS IN UNIMPROVED AREAS SHALL BE 6" HIGHER ABOVE FINISHED GRADE.
10. USE EXTRA STRENGTH PIPE. ALL JOINTS BE STANDARD BUTTER JOINTS AS NOTED.
11. USE MECHANICAL COMPRESSION JOINTS FOR ALL V.C.P. JOINTS PER SPECS., SEC. 36, 48 & 49.
12. WHERE EVER GROUND WATER IS ENCOUNTERED DURING THE CONSTRUCTION OF THE SEWERS, THE V.C.P. JOINTS SHALL BE OF MECHANICAL COMPRESSION JOINTS PER SPECS., SEC. 36, 48 & 49.
13. IF A POWER POLE IS WITHIN THREE FEET OF THE SEWER, THE SEWER SHALL BE ENCASED, PER S-23 TWO FEET ON EITHER SIDE FROM THE POINT OF INTERFERENCE.
14. IF DURING THE COURSE OF CONSTRUCTION IT IS DETERMINED THAT THERE IS LESS THAN FOUR FEET OF COVER OVER THE TOP OF A MAIN LINE OR HOUSE LATERAL V.C.P. SEWER WHICH IS NOT INDICATED ON THE PLANS, THE PIPE SHALL BE ENCASED PER S-23 UNLESS OTHERWISE APPROVED BY THE COUNTY ENGINEER.
15. HOUSE LATERALS TO BE CONSTRUCTED WITH INVERTS AT PROPERTY LINE ... 6" FEET BELOW CURB GRADE EXCEPT AS NOTED.
16. BROWNSHAW ALL TRENCHES WITHIN PAVED AREAS TO MEET L.A. COUNTY ROAD DEPT. OR CALIFORNIA STATE HIGHWAY REQUIREMENTS IN ACCORDANCE WITH PERMITS.
17. FOR ALLOWABLE LEAKAGE TEST USE FORMULA NO. 1000, SPECS., SEC. 54.
18. ALL STATE AND LOCAL TRENCH SAFETY ORDERS WILL BE RIGIDLY ENFORCED.
19. CONSTRUCTION IN FULL AREAS:
 - (A) IN ALL AREAS WHERE CONSTRUCTION TEST RESULTS SHALL BE SUBMITTED TO COMPLY WITH IN ACCORDANCE WITH A.S.T.M. STD. METHOD OF TEST D-458-42-T.
 - (B) NO CONSTRUCTION IS PERMITTED IN FILLED AREAS UNLESS THE RELATIVE DENSITY OF CONSTRUCTION IS LESS THAN 90%.
 - (C) IF THE RELATIVE DENSITY OF CONSTRUCTION IS LESS THAN 90% ALL MAIN AND BRANCH LATERALS SHALL BE CHANGED PER SPECS. OR HAVE A SPECIAL BOND COURSE PER SPECS. OR SPECIAL MANHOLE JOINTS PER S-48 AND APPROVED.
 - (D) NO RELATIVE DENSITY OF CONSTRUCTION IS GREATER THAN 90%. SPECIAL PROVISIONS SHALL BE IN PLACE BEFORE CONSTRUCTION OF SEWER.

COLLECT CHARGES AS INDICATED
 W.G. Jan 9/22/65

NO CONTRACTORS FOR THE DISPOSAL OF INDUSTRIAL WASTES SHALL BE MADE TO SEWERB SHOWING ON THESE DRAWINGS WITHOUT WRITTEN PERMISSION FROM THE CHIEF ENGINEER AND GENERAL MANAGER OF THE COUNTY SANITATION DISTRICTS.

COUNTY OF LOS ANGELES, CALIFORNIA
 JOHN A. LAMBIE, COUNTY ENGINEER
 APPROVED BY: [Signature]
 ASSISTANT SANITATION ENGINEER

J. D. PARKHURST, CHIEF ENGINEER
 CO. SAN. DIST. NO. 5
 APPROVED BY: [Signature]
 OFFICE ENGINEER

SUBMITTED BY: [Signature]
 REGIONAL ENGINEER

CHECKED BY: [Signature]
 REG. C.E. NO. 71521

J.N. 036610

