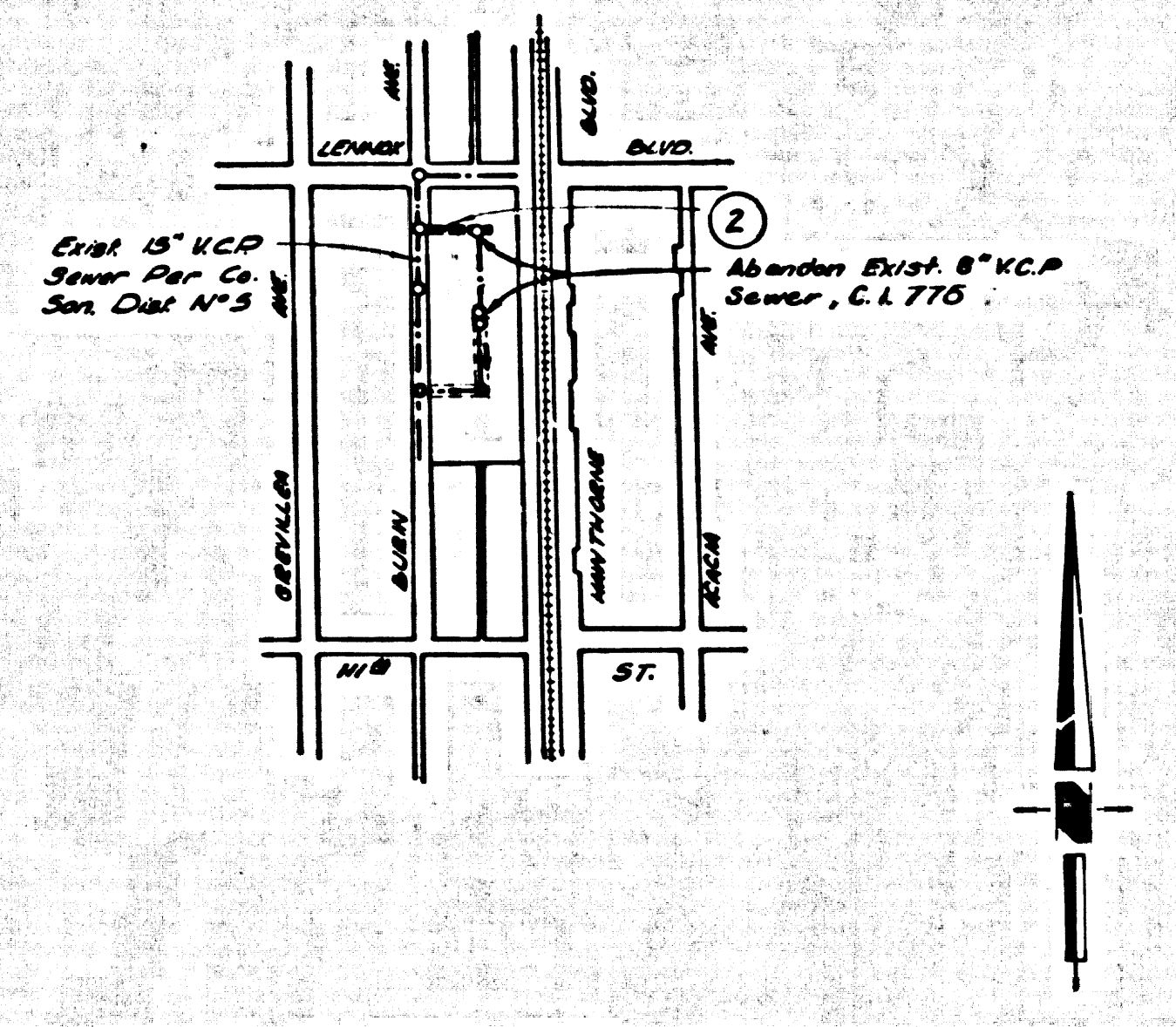


B.M. SY 887-A ELEV. 69.421
 CALIFORNIA STATE HIGHWAY, IN WELL,
 12' DOWN AT THE WEST C.T. INT. APPROX.
 INT. OF HAWTHORNE BLVD.
 (HAWTHORNE 28) QUAD. 19 60



INDEX MAP
 P.C. 7423
 SCALE 1"=600'

APPROVED:
James W. ...
 INDUSTRIAL WASTE DIVISION

LENNOX BLDG. DIST. NO. 7

- NOTES:
1. PROVIDE STAKES ON THE PROPERTY LINE OR PROPERTY LINES PRODUCED AT RIGHT ANGLES TO THE SEWER LINE AT THE CENTER LINE OF EACH MANHOLE.
 2. NO REPRESENTATIVE OF THE COUNTY ENGINEER WILL SURVEY OR LAY OUT ANY PORTION OF THE WORK.
 3. THE PRIVATE ENGINEER SHALL FURNISH THE COUNTY ENGINEER WITH GRADE SHEETS AND STATIONING FOR ALL HOUSE LATERALS AND THE MANHOLES AND SHALL PROVIDE GRADES FOR THEM AT THEIR PROPER LOCATIONS WITH STATIONING PLAINLY SHOWN. THE HOUSE LATERALS SHALL BE CONSTRUCTED IN A STRAIGHT ALIGNMENT AS SHOWN UNLESS OTHERWISE NOTED. THE HOUSE LATERALS SHALL BE SHOWN ON THE PLANS HOUSE LATERALS FROM CONCRETE SHALES NOT MORE THAN 48" FROM THE MAIN LINE SEWER. THE HOUSE LATERALS FROM CONCRETE SHALES SHALL NOT BE MORE THAN 48" FROM THE MAIN LINE SEWER. THE HOUSE LATERALS FROM CONCRETE SHALES SHALL NOT BE MORE THAN 48" FROM THE MAIN LINE SEWER.
 4. THE PRIVATE ENGINEER SHALL FURNISH THE HOUSE LATERAL SEWER AT THE PROPERTY LINE BELOW THE TOP-OF-CURB ELEVATION FOR EACH HOUSE LATERAL ON THE GRADE SHEET.
 5. NO REVISIONS SHALL BE MADE IN THESE PLANS WITHOUT THE APPROVAL OF THE COUNTY ENGINEER.
 6. THE CONTRACTOR SHALL NOTIFY THE CONSTRUCTION DIVISION BY TELEPHONE, MADISON 9-876, EXT. 8124, AT LEAST TWENTY-FOUR HOURS BEFORE STARTING ANY WORK UNDER THE CONTRACT.
 7. MANHOLES SHALL BE BRICK SEWER STRUCTURES PER S.S. PRECAST CONCRETE MANHOLES PER S-2 OR S-4 MAY BE USED AS AN ALTERNATE IN LOCATIONS APPROVED BY THE COUNTY ENGINEER.
 8. USE STANDARD MANHOLE FRAMES AND COVERS, S-14, EXCEPT AS NOTED.
 9. MANHOLES TOP IN UNIMPROVED RIGHTS-OF-WAY TO BE SIX INCHES ABOVE FINISHED GRADE.
 10. USE EXTRA STRENGTH PIPE ALL PIPE IS STANDARD DEPTH EXCEPT AS NOTED.
 11. USE MECHANICAL COMPRESSION JOINTS FOR ALL V.C.P. JOINTS PER S.P.C.C. SECS. 34, 40 & 41.
 12. IF A POWER POLE IS WITHIN THREE FEET OF THE SEWER, THE SEWER SHALL BE ENCASED, PER S-23, TWO FEET ON EACH SIDE FROM THE POINT OF INTERFERENCE.
 13. IF DURING THE COURSE OF CONSTRUCTION IT IS DETERMINED THAT THERE IS LESS THAN FOUR FEET OF COVER OVER THE TOP OF A MAIN LINE OR HOUSE LATERAL V.C.P. SEWER WHICH IS NOT INDICATED ON THE PLANS, THE PIPE SHALL BE ENCASED PER S-23, UNLESS OTHERWISE APPROVED BY THE COUNTY ENGINEER.
 14. HOUSE LATERALS TO BE CONSTRUCTED WITH INVERTS AT PROPERTY LINE 6 FEET BELOW CURB GRADE EXCEPT AS NOTED.
 15. RESURFACE ALL TRENCHES WITHIN PAVED AREAS TO MEET L.A. COUNTY ROAD DEPT. OR CALIFORNIA STATE HIGHWAY REQUIREMENTS IN ACCORDANCE WITH PERMITS.
 16. FOR ALLOWABLE LEAKAGE TEST USE FORMULA NO. 2, S.P.C.C., SEC. 34.
 17. ALL STATE AND LOCAL TRENCH SAFETY ORDINANCES WILL BE STRICTLY ENFORCED.

NO CONNECTIONS FOR THE DISPOSAL OF INDUSTRIAL WASTES SHALL BE MADE TO SEWERS SHOWN ON THESE DRAWINGS WITHOUT WRITTEN PERMISSION FROM THE CHIEF ENGINEER AND GENERAL MANAGER OF THE COUNTY SANITATION DISTRICTS.

BEFORE BREAKING INTO ANY EXISTING STRUCTURE AND BEFORE FINAL ACCEPTANCE OF THIS WORK, COUNTY SANITATION DISTRICT (DU 4-1261) SHALL BE NOTIFIED IN ORDER THAT REQUIRED INSPECTION CAN BE MADE.

COLLECT CHARGES AS INDICATED
James W. ...

PROFILE, ALIGNMENT AND GRADE OF
SANITARY SEWERS PAGE 1
 TO BE CONSTRUCTED IN
 R/W S/O LENNOX BLVD.

PRIVATE CONTRACT NO. 7423

W.S. 24
 1 SHEET, 2 PAGES
 SCALE: HORIZ. 1"=100' VERT. 1"=10'
 JULY, 1965
 PREPARED BY THE OFFICE OF
 WALSH-FORBERT, CIVIL ENGINEERS, INC.
 REG. C.E. NO. 6371
 FOR LEGEND SEE PLAN NO. 1

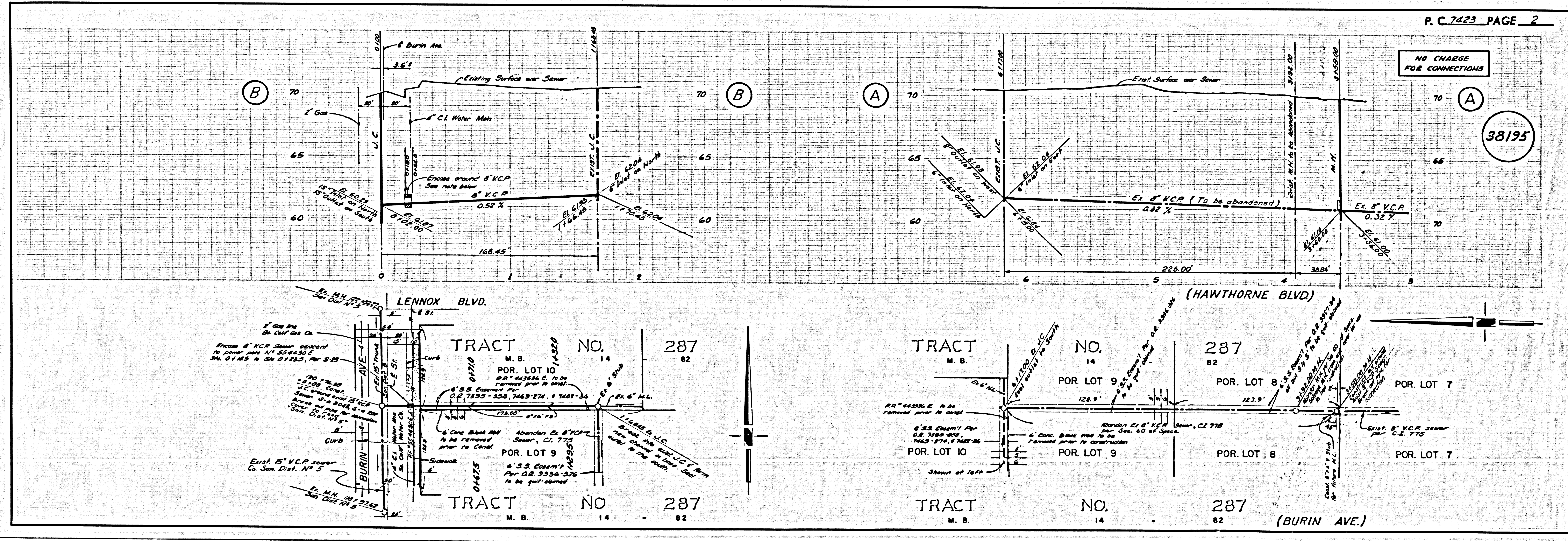
38194

WORKS TO WHICH THIS IMPROVEMENT IS TO BE CONSTRUCTED ARE SHOWN ON PLANS AND PROFILES. BEARING POINTS FOR TOP OF CURB, CENTER LINE OF STREETS, OR CENTER LINE OF ALLEYS ARE SHOWN BY CIRCLES ON PROFILES. AT ALL POINTS BETWEEN DESIGNATED POINTS THE GRADE SHALL BE ESTABLISHED SO AS TO CONFORM TO A STRAIGHT LINE DRAWN BETWEEN SAID DESIGNATED POINTS. ELEVATIONS ARE IN FEET ABOVE U.S.C. & G.S. MEAN DATUM OF 1929.

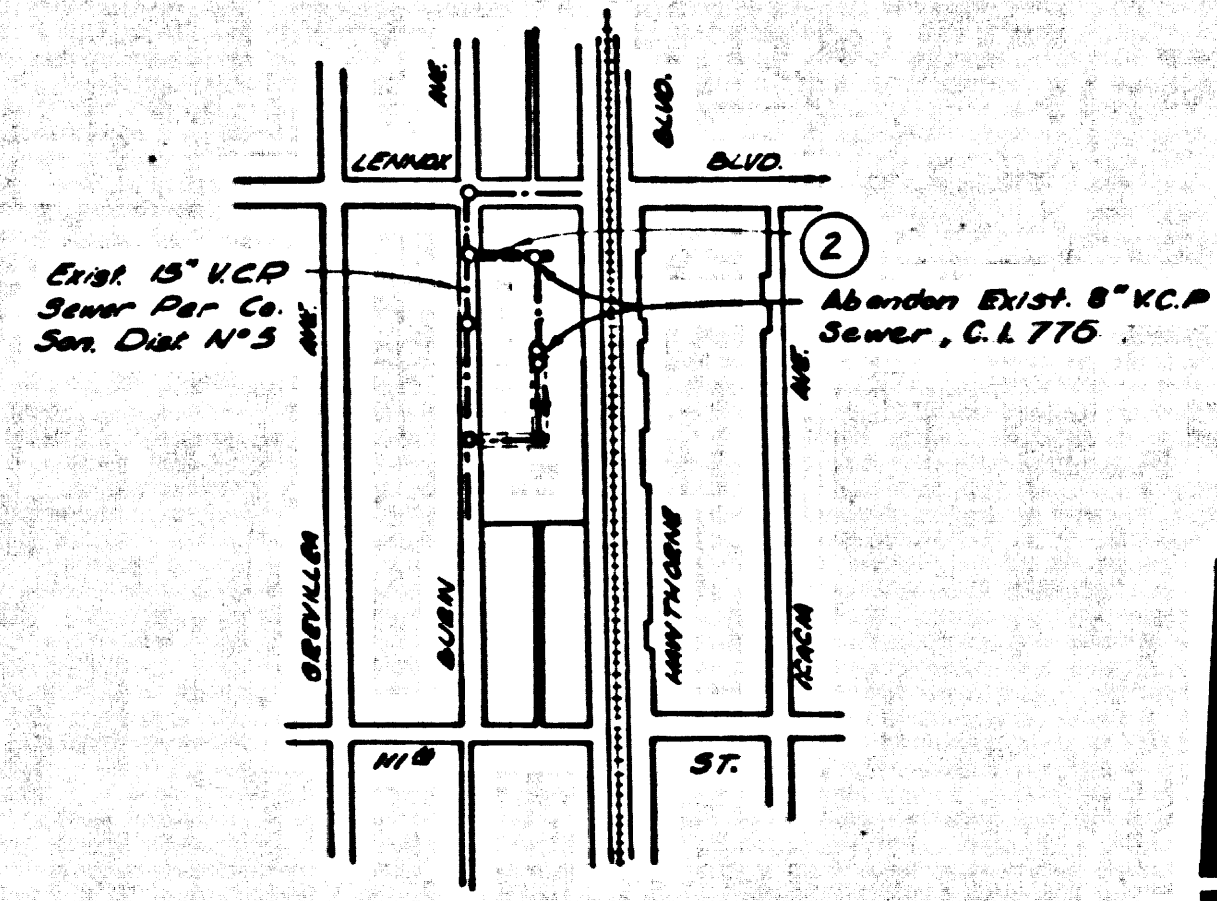
THIS DRAWING AND THE DATA HEREON ARE HEREBY MADE A PART OF THE SPECIFICATIONS. BEFORE WORK CAN BE STARTED, THE CONTRACTOR MUST OBTAIN A PERMIT TO EXCAVATE IN COUNTY STREETS FROM THE L.A. COUNTY ROAD DEPT., DISTRICT OFFICE NO. 1, AND PAY TO THE COUNTY ENGINEER, ROOM 201, COUNTY ENGINEERING BUILDING, 100 WEST SECOND STREET, LOS ANGELES, CALIFORNIA, A PERMIT TO EXCAVATE. BEFORE WORK CAN BE STARTED, THE CONTRACTOR MUST OBTAIN A PERMIT TO EXCAVATE IN COUNTY STREETS FROM THE L.A. COUNTY ROAD DEPT., DISTRICT OFFICE NO. 1, AND PAY TO THE COUNTY ENGINEER, ROOM 201, COUNTY ENGINEERING BUILDING, 100 WEST SECOND STREET, LOS ANGELES, CALIFORNIA, A PERMIT TO EXCAVATE. BEFORE WORK CAN BE STARTED, THE CONTRACTOR MUST OBTAIN A PERMIT TO EXCAVATE IN COUNTY STREETS FROM THE L.A. COUNTY ROAD DEPT., DISTRICT OFFICE NO. 1, AND PAY TO THE COUNTY ENGINEER, ROOM 201, COUNTY ENGINEERING BUILDING, 100 WEST SECOND STREET, LOS ANGELES, CALIFORNIA, A PERMIT TO EXCAVATE.

COUNTY OF LOS ANGELES, CALIFORNIA
 JOHN A. LAMBIE, COUNTY ENGINEER
 APPROVED BY: *James W. ...*
 SUBMITTED BY: *James W. ...*
 CHECKED BY: *James W. ...*
 REG. C.E. NO. 10552

J.N. 0366.11



B.M. SY 887-A ELEV. 69.421
 CALIFORNIA STATE HIGHWAY AND WELL
 IS DOWN AT OR NEAR C/L INT. MARKING
 MAP. 9 HAWTHORNE BLVD.
 (HAWTHORNE BLVD.) QUAD. 19 60



INDEX MAP
 P.C. 7423
 SCALE 1" = 600'

APPROVED:
James J. ...
 INDUSTRIAL WASTE DIVISION

COLLECT CHARGES
 AS INDICATED
Kenrick Walker

LENNOX BLDG. DIST. NO. 7

- NOTES:
1. PROFILE STAKES ON THE PROPERTY LINE OR PROPERTY LINES PRODUCED AT RIGHT ANGLES TO THE SEWER LINE AT THE CENTER LINE OF EACH MANHOLE.
 2. NO REPRESENTATIVE OF THE COUNTY ENGINEER WILL SURVEY OR LAY OUT ANY PORTION OF THE WORK.
 3. THE PRIVATE OWNER SHALL FURNISH THE COUNTY ENGINEER WITH GRADE SHEETS AND STATIONING FOR ALL HOUSE LATERALS AND 12" MANHOLES AND SHALL PROVIDE GRADES FOR THEM AT THEIR PROPER LOCATIONS WITH STATIONING PLAINLY MARKED. ALL HOUSE LATERALS SHALL BE CONSTRUCTED AT A DRAINAGE ALIGNMENT AT RIGHT ANGLES FROM THE MAIN LINE SEWER EXCEPT AS SHOWN ON THE PLANS. HOUSE LATERALS FROM CHIMNEYS SHALL NOT HAVE AN ANGLE OR BEE TRAIN-UP WITH THE MAIN LINE SEWER. ANY CHANGE IN ALIGNMENT SHALL BE REQUESTED IN WRITING BY THE PRIVATE ENGINEER.
 4. THE PRIVATE ENGINEER SHALL PROVIDE THE HOUSE LATERAL BELOW AT THE PROPERTY LINE BELOW THE TOP-OF-CURB ELEVATION FOR EACH HOUSE LATERAL ON THE GRADE SHEET.
 5. NO REVISIONS SHALL BE MADE IN THESE PLANS WITHOUT THE APPROVAL OF THE COUNTY ENGINEER.
 6. THE CONTRACTOR SHALL NOTIFY THE CONSTRUCTION DIVISION BY TELEPHONE, MADISON 9-4747, EXT. 8188, AT LEAST TWENTY-FOUR HOURS BEFORE STARTING ANY WORK UNDER THIS CONTRACT.
 7. MANHOLES SHALL BE BRICK SEWER STRUCTURES PER S.E. PRECAST CONCRETE MANHOLES PER S-3 OR S-4 MAY BE USED AS AN ALTERNATE IN LOCATIONS APPROVED BY THE COUNTY ENGINEER.
 8. USE STANDARD MANHOLE FRAMES AND COVERS, S-18, EXCEPT AS NOTED.
 9. MANHOLE TOPS IN UNIMPROVED RIGHTS-OF-WAY TO BE SIX INCHES ABOVE FINISHED GRADE.
 10. USE EXTRA STRENGTH PIPE. ALL PIPE IS STANDARD DEPTH EXCEPT AS NOTED.
 11. USE MECHANICAL COMPRESSION JOINTS FOR ALL V.C.P. JOINTS PER SPECS., SECS. 34, 48 & 49.
 12. IF A POWER POLE IS WITHIN THREE FEET OF THE SEWER, THE SEWER SHALL BE ENCASED, PER S-25, TWO FEET ON EACH SIDE FROM THE POINT OF INTERFERENCE.
 13. IF DURING THE COURSE OF CONSTRUCTION IT IS DETERMINED THAT THERE IS LESS THAN FOUR FEET COVER OVER THE TOP OF A MAIN LINE OR HOUSE LATERAL V.C.P. SEWER WHICH IS NOT INDICATED ON THE PLANS, THE PIPE SHALL BE ENCASED PER S-25, UNLESS OTHERWISE APPROVED BY THE COUNTY ENGINEER.
 14. HOUSE LATERALS TO BE CONSTRUCTED WITH INVERTS AT PROPERTY LINE 4 FEET BELOW CURB GRADE EXCEPT AS NOTED.
 15. RESURFACE ALL TRENCHES WITHIN PAVED AREAS TO MEET L.A. COUNTY ROAD DEPT. OR CALIFORNIA STATE HIGHWAY REQUIREMENTS IN ACCORDANCE WITH PERMITS.
 16. FOR ALLOWABLE LEAKAGE TEST USE FORMULA NO. 2, SPEC. L, SEC. 41.
 17. ALL STATE AND LOCAL TRENCH SAFETY ORDERS WILL BE STRICTLY ENFORCED.

NO CONNECTIONS FOR THE DISPOSAL OF INDUSTRIAL WASTES SHALL BE MADE TO SEWERS SHOWN ON THESE DRAWINGS WITHOUT WRITTEN PERMISSION FROM THE CHIEF ENGINEER AND GENERAL MANAGER OF THE COUNTY SANITATION DISTRICTS.

BEFORE BREAKING INTO ANY EXISTING STRUCTURES AND BEFORE FINAL ACCEPTANCE OF THIS WORK, COUNTY SANITATION DISTRICT (DU 4-1281) SHALL BE NOTIFIED IN ORDER THAT REQUIRED INSPECTION CAN BE MADE.

PROFILE, ALIGNMENT AND GRADE OF **P.C. 7423**
SANITARY SEWERS PAGE 1
 TO BE CONSTRUCTED IN
R/W S/O LENNOX BLVD.

PRIVATE CONTRACT NO. 7423

W.S. 24
 SHEET 2 PAGES
 SCALE: VERT. 1" = 4' HORIZ. 1" = 40'
 JULY, 1965
 PREPARED IN THE OFFICES OF
 MALSH-FORRETT, CIVIL ENGINEERS, INC.
 REG. C. E. NO. 6371

FOR LEGEND SEE PLAN NO. S-1

NOTE:
 GRADES TO WHICH THIS IMPROVEMENT IS TO BE CONSTRUCTED ARE SHOWN ON PLANS AND PROFILES. GRADE POINTS FOR TOP OF CURBS, CENTER LINE OF STREETS, OR CENTER LINE OF ALLEYS ARE SHOWN BY CIRCLES ON PROFILES. AT ALL POINTS BETWEEN DESIGNATED POINTS THE GRADE SHALL BE ESTABLISHED SO AS TO CONFORM TO A STRAIGHT LINE DRAWN BETWEEN SAID DESIGNATED POINTS. ELEVATIONS ARE IN FEET ABOVE M.S.L. & G.S. SEA LEVEL DATUM OF 1929. THE DRAWING AND THE INSTRUMENTS USED HEREIN ARE THE PROPERTY OF THE COUNTY ENGINEER. WORK SHALL BE CONSTRUCTED ACCORDING TO STANDARD SPECIFICATIONS DATED 12-22-62, ON FILE IN THE OFFICE OF THE COUNTY ENGINEER AND SHALL BE PROTECTED ONLY IN THE PRESENCE OF THE COUNTY ENGINEER. BEFORE WORK CAN BE STARTED, THE CONTRACTOR MUST OBTAIN A PERMIT TO EXCAVATE IN COUNTY STREETS FROM THE L.A. COUNTY ROAD DEPT., DISTRICT OFFICE AND PAY TO THE COUNTY ENGINEER, ROOM 308, COUNTY ENGINEER'S BUILDING, 100 WEST SECOND STREET OF "MOTOR VEHICLE", CALIFORNIA, REGISTRY, REGIONAL OFFICE, SUFFICIENT TO COVER THE COST OF CONSTRUCTION INSPECTION AND RECORD PLANS. APPROVAL OF THIS PLAN BY THE COUNTY OF LOS ANGELES DOES NOT CONSTITUTE A REPRESENTATION AS TO THE ACCURACY OF THE LOCATION OF OR THE EXISTENCE OR NON-EXISTENCE OF ANY UNDERGROUND UTILITY PIPE, OR STRUCTURE WITHIN THE LIMITS OF THIS PROJECT. THIS NOTE APPLIES TO ALL PAGES. IF WORK IS TO BE DONE IN A STATE HIGHWAY, A PERMIT MUST BE OBTAINED FROM THE STATE OF CALIFORNIA, DIVISION OF HIGHWAYS, 150 SOUTH SPRING STREET, LOS ANGELES, CALIFORNIA.

COUNTY OF LOS ANGELES, CALIFORNIA
 JOHN A. LAMBE, COUNTY ENGINEER
 J. D. PARKHURST, CHIEF ENGINEER
 CO. SAN. DIST. NO. 7
 APPROVED BY: *John A. Lambe*
 ASSISTANT SANITATION ENGINEER
 APPROVED BY: *J. D. Parkhurst*
 OFFICE ENGINEER
 SUBMITTED BY: *Malsh-Forrett*
 REGIONAL ENGINEER
 CHECKED BY: *James J. ...*
 REG. C. E. NO. 10552

J.N. 0366.11

