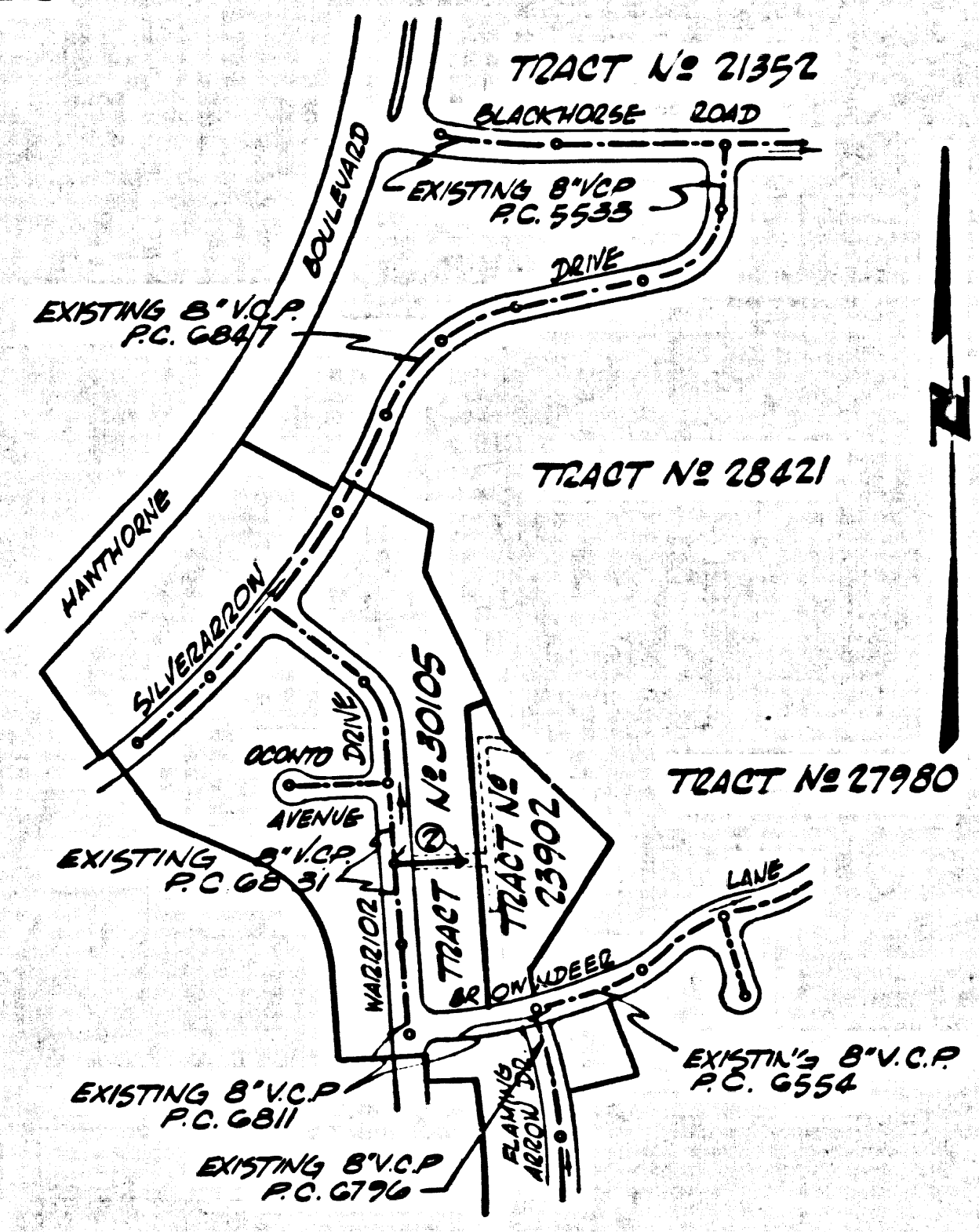


B.M. 14 4366-A ELEV. 985.793
 P.D. B.M. 109 ± 1' N. of cor. of N.W. Cor. Huntington Blvd. & Silver Spur
 P.D. = 85' N. & 53' W. of E. Int.
 PHOENIX QUAD. 19 60



INDEX MAP
 TRACT No 23902
 P.C. 7424
 SCALE 1" = 400'

PRIVATE ENGINEER'S NOTICE TO CONTRACTOR
 THE EXISTENCE AND LOCATION OF ANY UNDERGROUND UTILITY PIPES OR STRUCTURES SHOWN ON THESE PLANS ARE OBTAINED BY A SEARCH OF THE AVAILABLE RECORDS. TO THE BEST OF OUR KNOWLEDGE THERE ARE NO EXISTING UTILITIES EXCEPT AS SHOWN ON THIS MAP. THE CONTRACTOR IS REQUIRED TO TAKE PRECAUTIONARY MEASURES TO PROTECT THE UTILITY LINES SHOWN AND ANY OTHER LINES NOT OF RECORD OR NOT SHOWN ON THIS DRAWING.

LOMITA BLDG. DIST. NO. 12

PROFILE ALIGNMENT AND GRADE OF
SANITARY SEWERS PAGE 1
 TO BE CONSTRUCTED IN
TRACT No 23902

PRIVATE CONTRACT NO. 7424

W.S. #7
 1 SHEET 2 PAGES
 SCALE: VERT. 1" = 4'-0" HORIZ. 1" = 40'-0" JUNE, 1965
 PREPARED IN THE OFFICES OF

J.R. Merrill
 REG. C.E. NO. 18095

FOR LEGEND SEE PLAN NO. S-1

- NOTES:
1. PROVIDE STAKES ON THE PROPERTY LINE OR PROPERTY LINES PRODUCED AT RIGHT ANGLES TO THE SEWER LINE AT THE CENTER LINE OF EACH MANHOLE.
 2. NO REPRESENTATIVE OF THE COUNTY ENGINEER WILL SURVEY OR LAY OUT ANY PORTION OF THE WORK.
 3. THE PRIVATE ENGINEER SHALL FURNISH THE COUNTY ENGINEER WITH GRADE SHEETS AND STATIONING FOR ALL HOUSE LATERALS AND Y BRANCHES AND SHALL PROVIDE STAKES FOR THEM AT THEIR PROPER LOCATIONS WITH STATIONING PLAINLY MARKED. ALL HOUSE LATERALS SHALL BE CONSTRUCTED IN A STRAIGHT ALIGNMENT AT RIGHT ANGLES FROM THE MAIN LINE SEWER EXCEPT AS SHOWN ON THE PLANS. HOUSE LATERALS FROM CHIMNEYS SHALL NOT HAVE AN ANGLE OF LESS THAN 45° WITH THE MAIN LINE SEWER. ANY CHANGE IN ALIGNMENT SHALL BE REQUESTED IN WRITING BY THE PRIVATE ENGINEER.
 4. THE PRIVATE ENGINEER SHALL FURNISH THE HOUSE LATERAL DEPTH AT THE PROPERTY LINE BELOW THE TOP OF CURB ELEVATION FOR EACH HOUSE LATERAL ON THE GRADE SHEET.
 5. NO REVISIONS SHALL BE MADE IN THESE PLANS WITHOUT THE APPROVAL OF THE COUNTY ENGINEER.
 6. THE CONTRACTOR SHALL NOTIFY THE CONSTRUCTION DIVISION BY TELEPHONE, MADISON 9-4747, EXT. 8151, AT LEAST TWENTY-FOUR HOURS BEFORE STARTING ANY WORK UNDER THIS CONTRACT.
 7. MANHOLES SHALL BE BRICK SEWER STRUCTURES PER S-2-1. PRECAST CONCRETE MANHOLES PER S-2-2 OR S-2-3 MAY BE USED AS AN ALTERNATE IN LOCATIONS APPROVED BY THE COUNTY ENGINEER.
 8. USE STANDARD MANHOLE FRAMES AND COVERS, S-1/B EXCEPT AS NOTED.
 9. MANHOLE TOPS IN UNIMPROVED RIGHTS-OF-WAY TO BE SIX INCHES ABOVE FINISHED GRADE.
 10. USE EXTRA STRENGTH PER S-2-1/C FOR ALL 18" AND 24" SIZES UNLESS OTHERWISE NOTED.
 11. USE MECHANICAL COMPRESSION JOINTS FOR ALL V.C.P. JOINTS PER SPECS. SECS. 34 & 48 & 49.
 12. ALL JOINTS SHALL BE PROTECTED BY A 2" THICK LAYER OF SAND OR OTHER SOFT MATERIAL.
 13. IF A POWER POLE IS WITHIN THREE FEET OF THE SEWER, THE SEWER SHALL BE ENCASED, PER S-2-3 (A) & TWO FEET ON EACH SIDE FROM THE POINT OF INTERFERENCE.
 14. IF DURING THE COURSE OF CONSTRUCTION IT IS DETERMINED THAT THERE IS LESS THAN FOUR FEET OF COVER OVER THE TOP OF A MAIN LINE OR HOUSE LATERAL V.C.P. SEWER WHICH IS NOT INDICATED ON THE PLANS, THE PIPE SHALL BE ENCASED PER S-2-3 (A) UNLESS OTHERWISE APPROVED BY THE COUNTY ENGINEER.
 15. ALL STREETS AND LOCAL THROUGH STREETS SHALL BE FINISHED TO THE STANDARD SPECIFICATIONS OF THE COUNTY ENGINEER IN ACCORDANCE WITH PERMITS.
 16. REINFORCE ALL FINISHES WITHIN PAVED AREAS TO MEET L.A. COUNTY ROAD DEPT. OR CALIFORNIA STATE HIGHWAY REQUIREMENTS IN ACCORDANCE WITH PERMITS.
 17. FOR ALLOWABLE LEAKAGE TEST USE FORMULA NO. 1, SPECS. SEC. 54.
 18. CONSTRUCTION IN FILLED AREAS:
 - (a) AN ACCEPTABLE CERTIFICATION OF COMPLETION TEST RESULTS SHALL BE SUBMITTED TO THE CONSTRUCTION DIVISION. COMPLETION TESTS ARE TO BE MADE IN ACCORDANCE WITH THE STANDARD METHOD OF TEST D-22-2.
 - (b) THE COMPLETION IS DEFINED IN FILLED AREAS AS THE RELATIVE DENSITY OF COMPLETION IS LESS THAN 80%.
 - (c) IF THE RELATIVE DENSITY OF COMPLETION IS LESS THAN 80% ALL GRANULAR AND SANDS CONTAINED SHALL BE CONTROLLED PER S-2-1 BY OVER SENSITIVE SAND ANALYSIS PER S-2-1, CASE B, SPECIAL ANNUAL RATE PER S-2-1 IS REQUIRED.
 - (d) IF THE RELATIVE DENSITY OF COMPLETION IS 80% OR GREATER, THE SPECIAL PROVISIONS IN (C) ARE NOT REQUIRED.

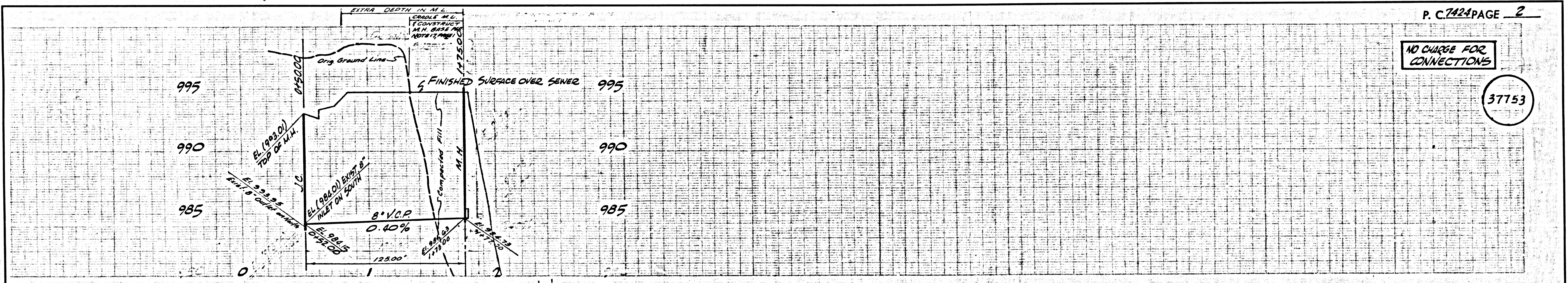
COLLECT CHARGES AS INDICATED
Edward N. McChesney 11/29/65

NO CONNECTIONS FOR THE DISPOSAL OF INDUSTRIAL WASTES SHALL BE MADE TO SEWERS SHOWN ON THESE DRAWINGS WITHOUT WRITTEN PERMISSION FROM THE CHIEF ENGINEER AND GENERAL MANAGER OF THE COUNTY SANITATION DISTRICTS.

NOTE:
 GRADES TO WHICH THIS IMPROVEMENT IS TO BE CONSTRUCTED ARE SHOWN ON PLANS AND PROFILES. GRADE POINTS FOR TOP OF CURB, CENTER LINE OF STREETS, OR CENTER LINE OF ALLEYS ARE SHOWN BY CIRCLES ON PROFILES. AT ALL POINTS BETWEEN DESIGNATED POINTS THE GRADE SHALL BE ESTABLISHED SO AS TO CONFORM TO A STRAIGHT LINE DRAWN BETWEEN SAID DESIGNATED POINTS. ELEVATIONS ARE IN FEET ABOVE U.S.C. & G.S. SEA LEVEL DATUM OF 1929. THE DRAWING AND THE DATA HEREON ARE HEREBY MADE A PART OF THE SPECIFICATIONS. WORK SHALL BE CONSTRUCTED ACCORDING TO STANDARD SPECIFICATIONS DATED 1952, 22-22-B, ON FILE IN THE OFFICE OF THE COUNTY ENGINEER AND THE DATA HEREON ARE HEREBY MADE A PART OF THE SPECIFICATIONS. BEFORE WORK CAN BE STARTED, THE CONTRACTOR MUST OBTAIN A PERMIT TO EXCAVATE IN COUNTY STREETS FROM THE L.A. COUNTY ROAD DEPT., DISTRICT OFFICE PER S-2-1 AND PAY A FEE TO THE COUNTY ENGINEER, ROOM 330, COUNTY ENGINEERING BUILDING, 100 WEST SECOND STREET, LOS ANGELES, CALIFORNIA 90012. REGIONAL OFFICE, SANITATION DISTRICTS, 100 WEST SECOND STREET, LOS ANGELES, CALIFORNIA. IF WORK IS TO BE DONE IN A STATE HIGHWAY, A PERMIT MUST BE OBTAINED FROM THE STATE OF CALIFORNIA, DIVISION OF HIGHWAYS, 120 SOUTH SPRING STREET, LOS ANGELES, CALIFORNIA.

COUNTY OF LOS ANGELES, CALIFORNIA
 JOHN A. LAMBIE, COUNTY ENGINEER J. D. PARKHURST, CHIEF ENGINEER
 CO. SAN. DIST. NO. 12
 APPROVED BY: *R. S. Kelly* ASSISTANT SANITATION ENGINEER 11-23-65
 APPROVED BY: *J. D. Parkhurst* OFFICE ENGINEER
 CHECKED BY: *Bernard A. Valerky* REG. C.E. NO. 12553

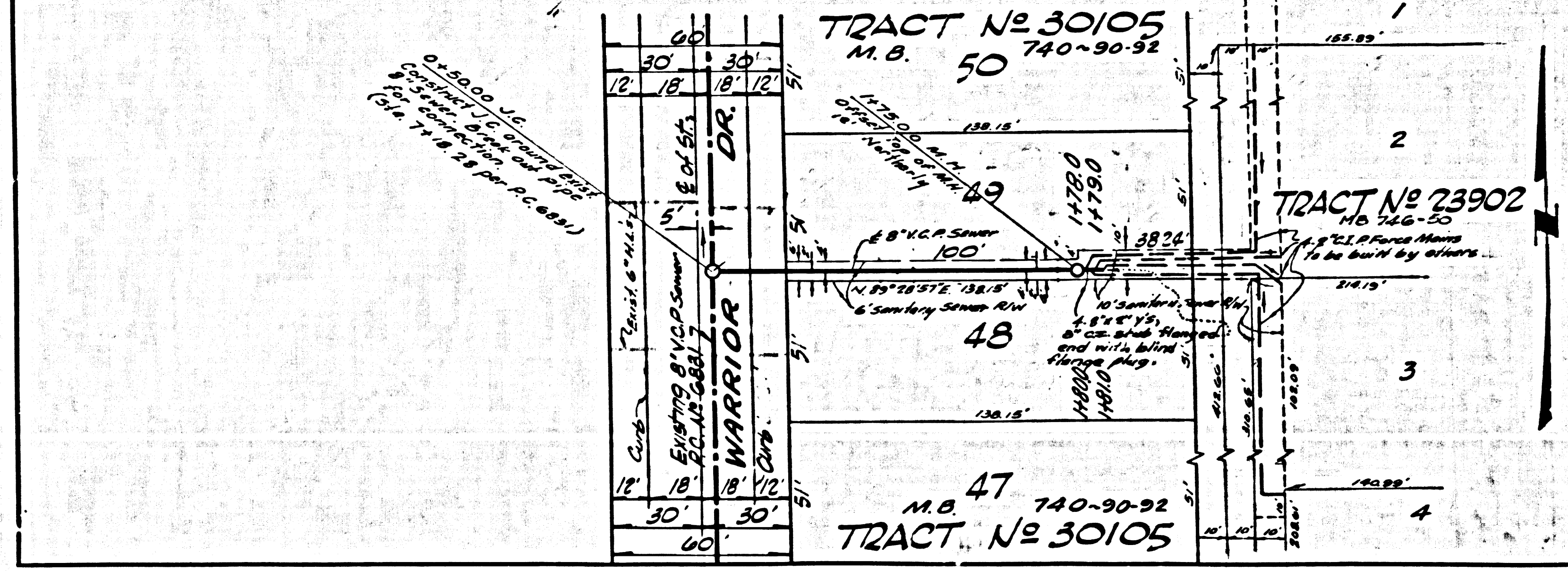
J.N. 0366.12



P. C. 7424 PAGE 2

NO CHARGE FOR CONNECTIONS

37753



LOTS 1-4 OF TRACT 23902 TO HAVE INDIVIDUAL PUMP STATIONS FOR SEWAGE DISPOSAL