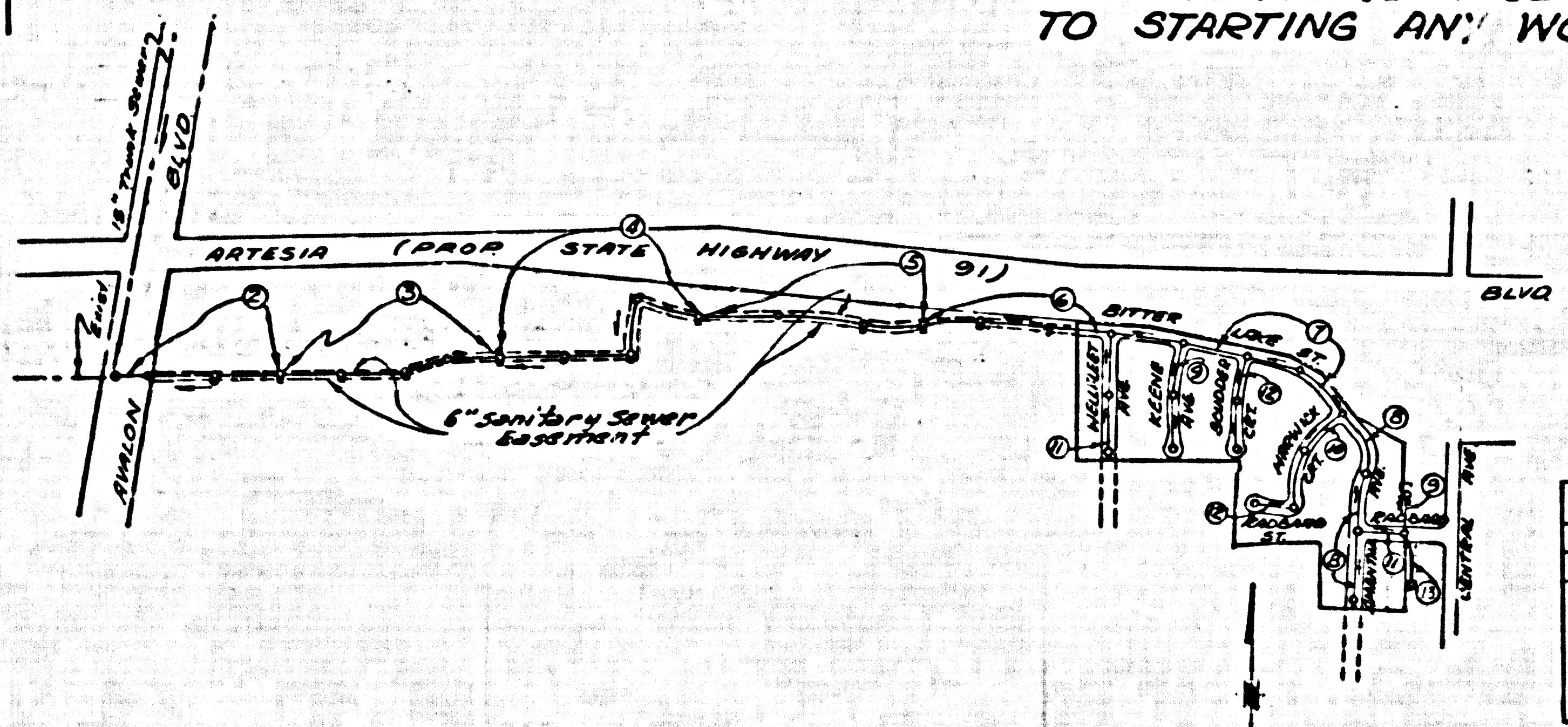


B.M. 5Y-3125 ELEV. 42.502  
 LET in Concrete base of N.E.  
 leg of Power Transformer #41 on  
 E. of Avalon Blvd. 1st Tower  
 South of Artesia Blvd.  
 GARONA QUAD. 19 60

**NOTE:**  
 THERE ARE NUMEROUS UNDERGROUND  
 UTILITIES WITHIN THE AREA COVERED  
 BY THIS CONTRACT.  
 CONTRACTOR MUST CONTACT UNION OIL  
 CO OR ITS REPRESENTATIVE PRIOR  
 TO STARTING ANY WORK.



ISSUE NO HOUSE  
 LATERAL PERMITS  
 UNTIL SEWER R/W  
 IS RECORDED

**REVISIONS** 3/29/66  
 Relocate J.C. Manhole from Sta. 20+15.09 to  
 Sta. 20+25.09

Approved: *[Signature]*  
 Office of County Engineer R.E. # 521

**REVISIONS** 2/2/66  
 Revised design from  
 Sta. 18+86.35 to Avalon Blvd.  
 Revised design from  
 Sta. 17+50.00 to Sta. 18+00.00  
 Added man. in 5' x 5' man. changed from 18" to 24"  
 Approved: *[Signature]* 2/2/66  
 Office of County Engineer R.E. # 10693

INDEX MAP  
 TRACT NO. 24268  
 P.C. 7426  
 Scale: 1" = 600'

BEFORE BREAKING INTO ANY EXISTING STRUCTURE  
 AND BEFORE FINAL ACCEPTANCE OF THIS WORK  
 COUNTY SANITATION DISTRICT (CSD 12281) SHALL  
 BE NOTIFIED IN ORDER THAT REQUIRED INSPEC-  
 TION CAN BE MADE.

NO CONNECTIONS FOR THE DISPOSAL OF  
 INDUSTRIAL WASTES SHALL BE MADE TO  
 SEWERS SHOWN ON THESE DRAWINGS  
 WITHOUT WRITTEN PERMISSION FROM THE  
 CHIEF ENGINEER AND GENERAL MANAGER  
 OF THE COUNTY SANITATION DISTRICTS.

LENNOX BLDG. DIST. NO. 7

- NOTE:
- PROVIDE STAKES ON THE PROPERTY LINE OR PROPERTY LINES PRODUCED AT RIGHT ANGLES TO THE SEWER LINE AT THE CENTER OF EACH MANHOLE.
  - NO REPRESENTATIVE OF THE COUNTY ENGINEER WILL SURVEY OR LAY OUT ANY PORTION OF THE WORK.
  - THE PRIVATE ENGINEER SHALL FURNISH THE COUNTY ENGINEER WITH GRADE SHEETS AND STATIONING FOR ALL HOUSE LATERALS AND Y BRANCHES AND SHALL PROVIDE STAKES FOR THESE AT THEIR PROPER LOCATIONS WITH STATIONING PLAINLY MARKED. ALL HOUSE LATERALS SHALL BE CONSTRUCTED IN A STRAIGHT ALIGNMENT AT RIGHT ANGLES FROM THE MAIN LINE SEWER EXCEPT AS SHOWN ON THE PLANS. HOUSE LATERALS FROM CHIMNEYS SHALL NOT HAVE AN ANGLE OF LESS THAN 45° WITH THE MAIN LINE SEWER. ANY CHANGE IN ALIGNMENT SHALL BE REQUESTED IN WRITING BY THE PRIVATE ENGINEER.
  - THE PRIVATE ENGINEER SHALL FURNISH THE HOUSE LATERAL DEPTH AT THE PROPERTY LINE BELOW THE TOP OF CURB ELEVATION FOR EACH HOUSE LATERAL ON THE GRADE SHEET.
  - NO REVISIONS SHALL BE MADE IN THESE PLANS WITHOUT THE APPROVAL OF THE COUNTY ENGINEER.
  - THE CONTRACTOR SHALL NOTIFY THE CONSTRUCTION DIVISION BY TELEPHONE, MADISON 9-4747, EXT. 8133, AT LEAST TWENTY-FOUR HOURS BEFORE STARTING ANY WORK UNDER THIS CONTRACT.
  - MANHOLES SHALL BE BRICK SEWER STRUCTURES PER S-3, PRECAST CONCRETE MANHOLES PER S-4 OR S-5, MAY BE USED AS AN ALTERNATE IN LOCATIONS APPROVED BY THE COUNTY ENGINEER.
  - USE STANDARD MANHOLE FRAMES AND COVERS, S-15, EXCEPT AS NOTED.
  - MANHOLE TOPS IN UNIMPROVED RIGHTS OF WAY TO BE SIX INCHES ABOVE FINISHED GRADE.
  - USE EXTRA STRENGTH PIPE ALL PIPE IS STANDARD DEPTH EXCEPT AS NOTED.
  - USE RAINFALL COMPRESSION JOINTS FOR ALL V.C.P. JOINTS PER SPEC., SECS. 24 & 25.

- IF A POWER POLE IS WITHIN THREE FEET OF THE SEWER, THE SEWER SHALL BE BICASED, PER S-25, TWO FEET ON EACH SIDE FROM THE POINT OF INTERFERENCE.
- IF DURING THE COURSE OF CONSTRUCTION IT IS DETERMINED THAT THERE IS LESS THAN FOUR FEET OF COVER OVER THE TOP OF A MAIN LINE OR HOUSE LATERAL V.C.P. SEWER WHICH IS NOT INDICATED ON THE PLANS, THE PIPE SHALL BE BICASED PER S-25, UNLESS OTHERWISE APPROVED BY THE COUNTY ENGINEER.
- HOUSE LATERALS TO BE CONSTRUCTED WITH INVERTS AT PROPERTY LINE... 6" FEET BELOW CURB GRADE EXCEPT AS NOTED.
- RESURFACE ALL TRENCHES WITHIN PAVED AREAS TO MEET L.A. COUNTY ROAD DEPT. OR CALIFORNIA STATE HIGHWAY REQUIREMENTS IN ACCORDANCE WITH PERMITS.
- NO ALLOWANCE BE MADE THAT THE FORMULA NO. 2, SPEC. S-1, SEC. 24.
- THE EXISTENCE AND LOCATION OF ANY UNDERGROUND UTILITY PIPES, CONDUITS OR STRUCTURES SHOWN ON THESE PLANS ARE OBTAINED BY SEARCH OF THE AVAILABLE RECORDS. TO THE BEST OF OUR KNOWLEDGE THERE ARE NO OTHER UTILITIES EXCEPT AS SHOWN ON THESE PLANS. THE CONTRACTOR IS REQUIRED TO TAKE ALL PRECAUTIONARY MEASURES TO PROTECT THE UTILITY LINES SHOWN AND ANY OTHER LINES NOT SO RECORDED OR NOT SHOWN ON THESE DRAWINGS. THE CONTRACTOR ASSUMES ALL LIABILITY AND RESPONSIBILITY FOR THE UTILITY PIPES, CONDUITS, LINES OR STRUCTURES SHOWN OR NOT SHOWN ON THESE DRAWINGS.
- ALL STATE AND LOCAL TRENCH LAWS WILL BE RIGIDLY ENFORCED.
- (a) An acceptable certification of compaction test results shall be submitted to the County Sanitation District (CSD) in accordance with the Standard Method of Test D-155-45 T.
- (b) If construction is performed in filled areas where the relative density of compaction is less than 85%.
- (c) If the relative density of compaction is less than 30% all main line and large size laterals shall be spread over 5-23 or have a special base course per S-24, C.S.D. Sanitary Sewer S-15 per required.
- (d) If the relative density of compaction is 30% or greater, the special provisions (c) are not required.

COLLECT CHARGES  
 AS INDICATED  
*[Signature]* 7-3-65

PROFILE ALIGNMENT AND GRADE OF  
 SANITARY SEWERS PAGE 1

TRACT NO. 24268

PRIVATE CONTRACT NO. 7426

W.S. 26  
 7 SHEETS, 13 PAGES  
 38172

SCALE: VERT. 1" = 4'  
 HORIZ. 1" = 40'  
 JULY, 1965

PREPARED IN THE OFFICES OF  
 E.L. PEARSON AND ASSOCIATES  
*[Signature]*  
 P.C. E. NO. 9757

FOR LEGEND SEE PLAN NO. S-1

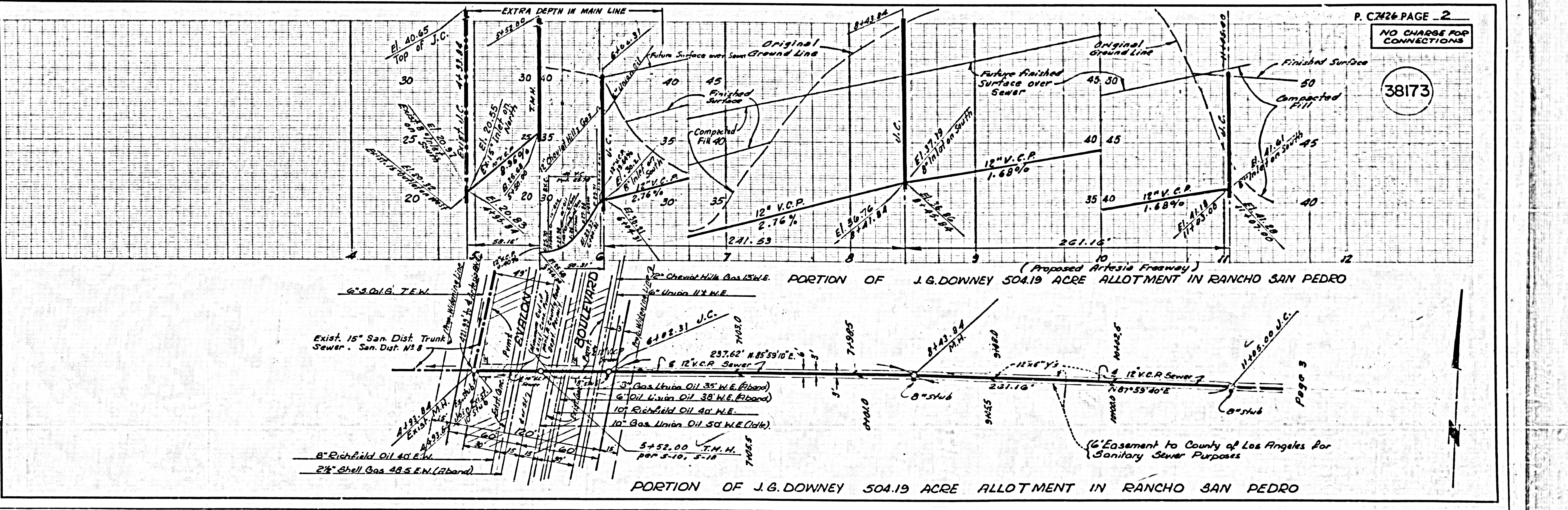
NOTE:  
 CHANGES TO WHICH THIS IMPROVEMENT IS TO BE CONSTRUCTED ARE SHOWN ON PLANS AND PROFILES. GRADE POINTS FOR TOP OF CURBS, CENTER LINE OF STREETS, OR CENTER LINE OF ALLEYS ARE SHOWN BY CIRCLES ON PROFILES AT ALL POINTS BETWEEN DESIGNATED POINTS THE SPACING SHALL BE ESTABLISHED SO AS TO COMPARE TO A STRAIGHT LINE DRAWN BETWEEN SAID DESIGNATED POINTS. ELEVATIONS ARE NOT SHOWN IF C.S. & D.S. SEA LEVEL DATUM OF 1929.

THIS DRAWING AND THE DATA HEREON ARE HEREBY MADE A PART OF THE SPECIFICATIONS. THE CONTRACTOR MUST OBTAIN A PERMIT TO EXCAVATE IN COUNTY STREETS FROM THE L.A. COUNTY ROAD DEPT. DISTRICT OFFICE NO. 12281 AND PAY A FEE TO THE COUNTY ENGINEER, ROOM 300, COUNTY ENGINEER BUILDING, 100 WEST SECOND STREET OR 14000 WILSHIRE BLVD., WILSHIRE BRANCH OFFICE, SUPPLEMENT TO COVER THE COST OF CONSTRUCTION INSPECTION AND ALLOW PLANS.

APPROVAL OF THIS PLAN BY THE COUNTY OF LOS ANGELES DOES NOT CONSTITUTE A REPRESENTATION AS TO THE ACCURACY OF THE LOCATION OF OR THE EXISTENCE OF ANY UNDERGROUND UTILITY PIPE, OR STRUCTURE WITHIN THE LIMITS OF THE PROJECT. IF WORK IS TO BE DONE IN A STATE HIGHWAY A PERMIT MUST BE OBTAINED FROM THE STATE OF CALIFORNIA, DIVISION OF HIGHWAYS, 100 SOUTH SPRING STREET, LOS ANGELES, CALIFORNIA.

COUNTY OF LOS ANGELES, CALIFORNIA  
 JOHN A. LAMBE, COUNTY ENGINEER  
 J. D. PARKHURST, CHIEF ENGINEER  
 CO. SAN. DIST. NO. 12281  
 APPROVED BY: *[Signature]*  
 APPROVED BY: *[Signature]*  
 SUBMITTED BY: *[Signature]*  
 CHECKED BY: *[Signature]*  
 REG. C.E. NO. 10732

J. N. 0366.14



P. 7426 PAGE 2  
 NO CHARGE FOR CONNECTIONS

38173

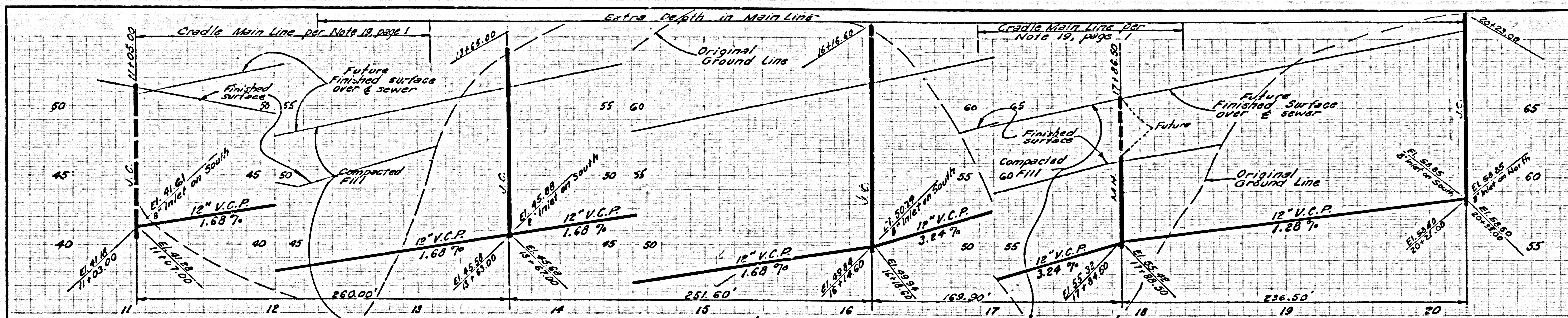
PORTION OF J.G. DOWNEY 504.19 ACRE ALLOTMENT IN RANCHO SAN PEDRO

PORTION OF J.G. DOWNEY 504.19 ACRE ALLOTMENT IN RANCHO SAN PEDRO

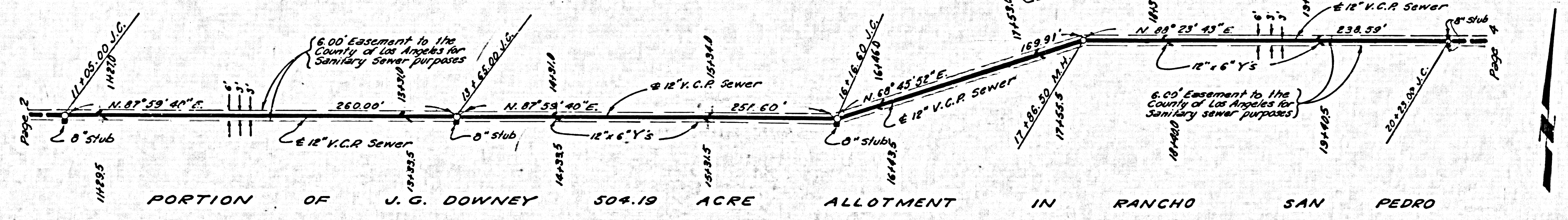


NO CHARGE FOR CONNECTIONS

38174



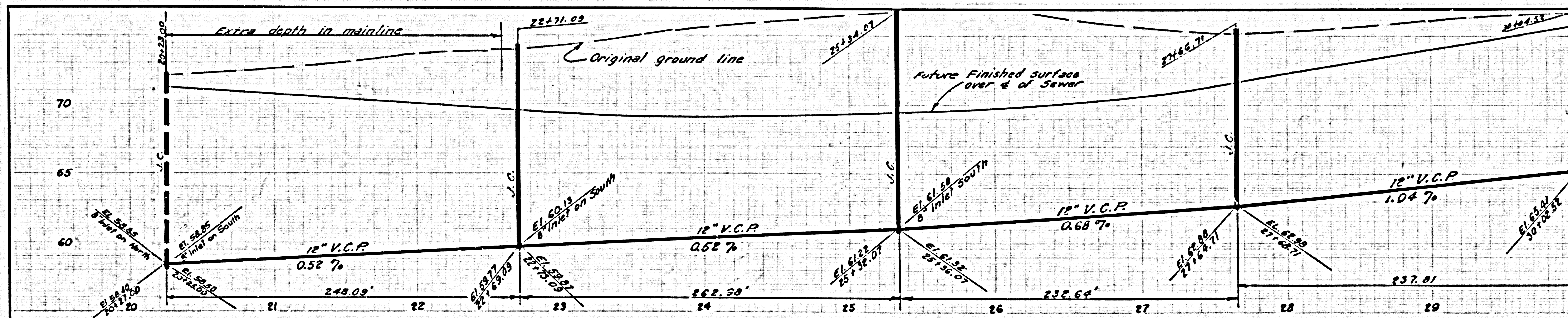
PORTION OF J.G. DOWNEY 504.19 ACRE ALLOTMENT IN RANCHO SAN PEDRO



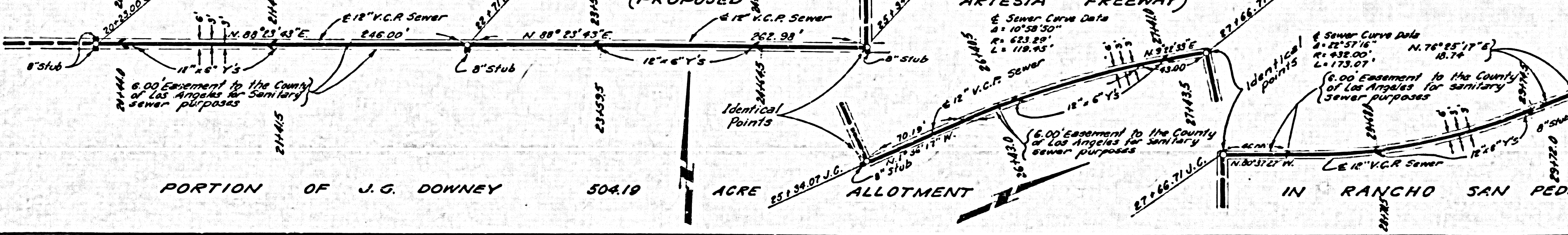
PORTION OF J.G. DOWNEY 504.19 ACRE ALLOTMENT IN RANCHO SAN PEDRO

NO CHARGE FOR CONNECTIONS

38175

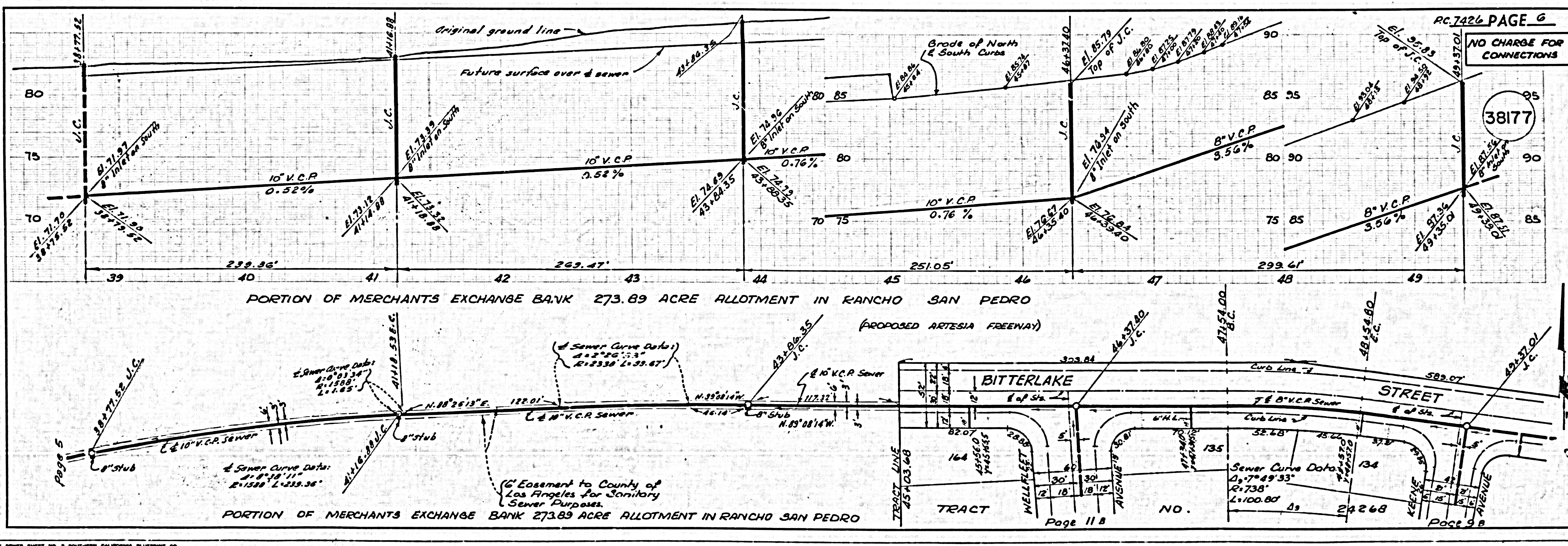
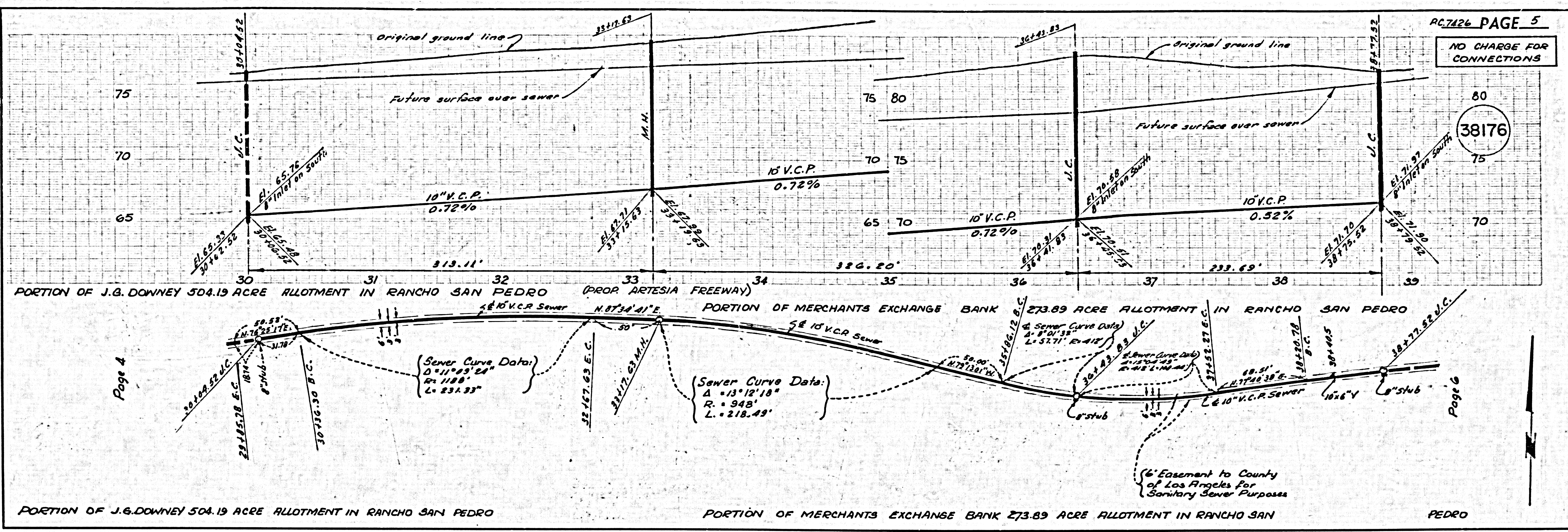


PORTION OF J.G. DOWNEY 504.19 ACRE ALLOTMENT (PROPOSED ARTESIA FREEWAY) IN RANCHO SAN PEDRO

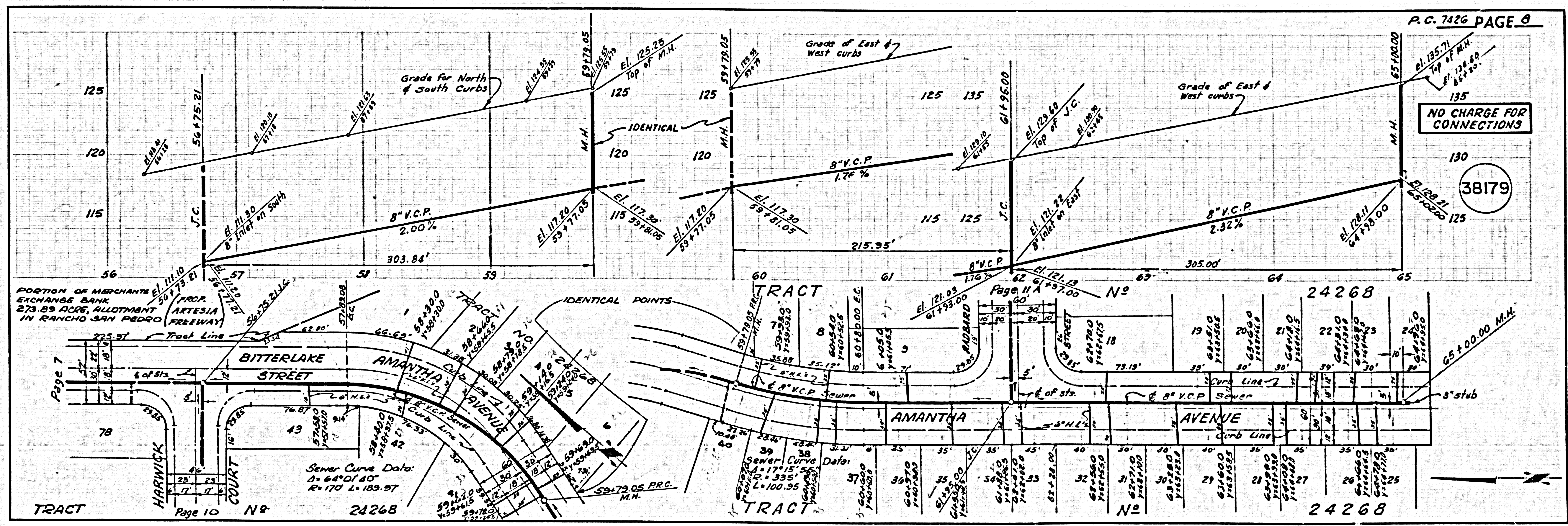
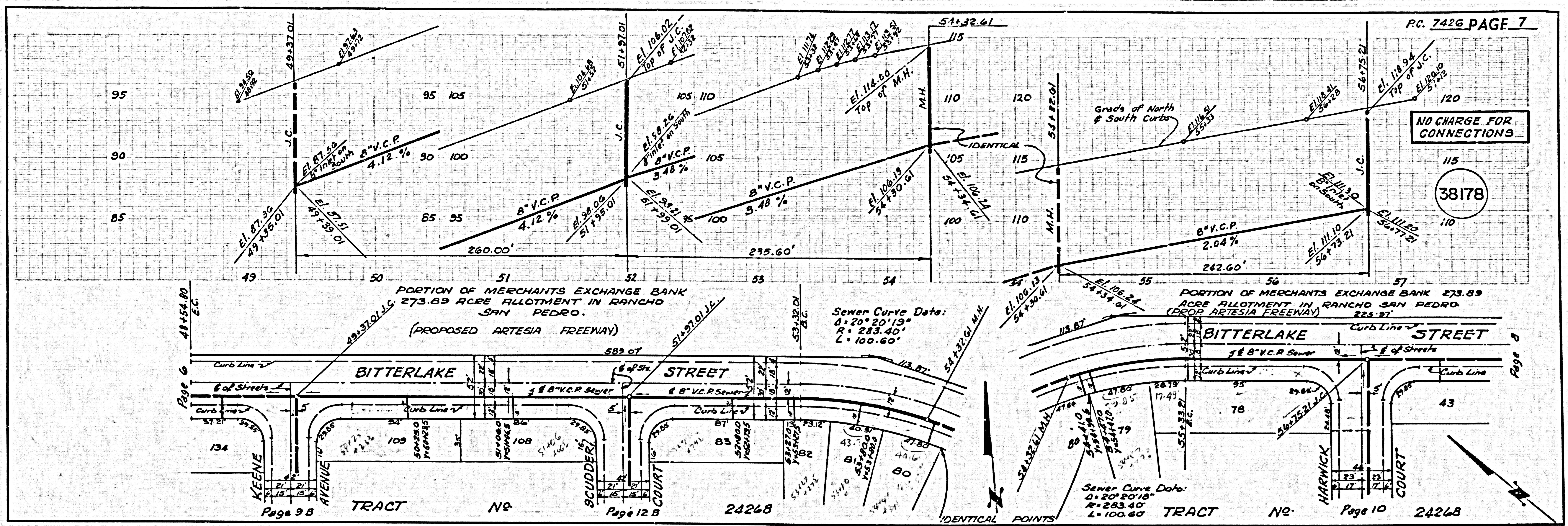


PORTION OF J.G. DOWNEY 504.19 ACRE ALLOTMENT (PROPOSED ARTESIA FREEWAY) IN RANCHO SAN PEDRO

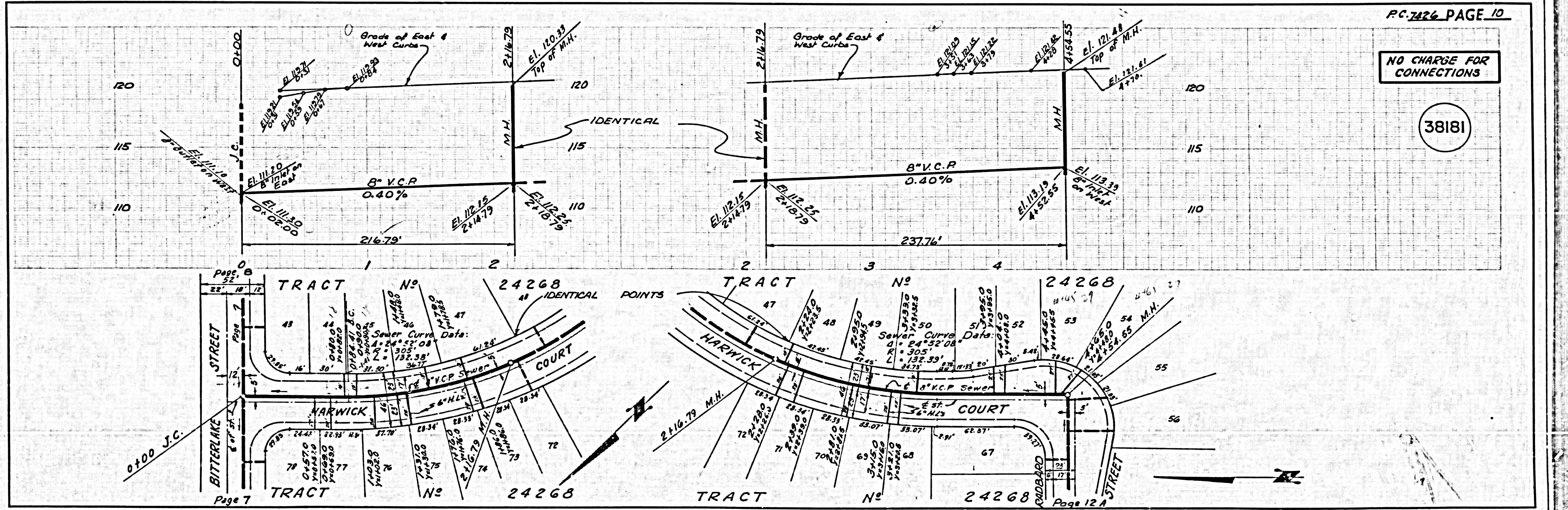
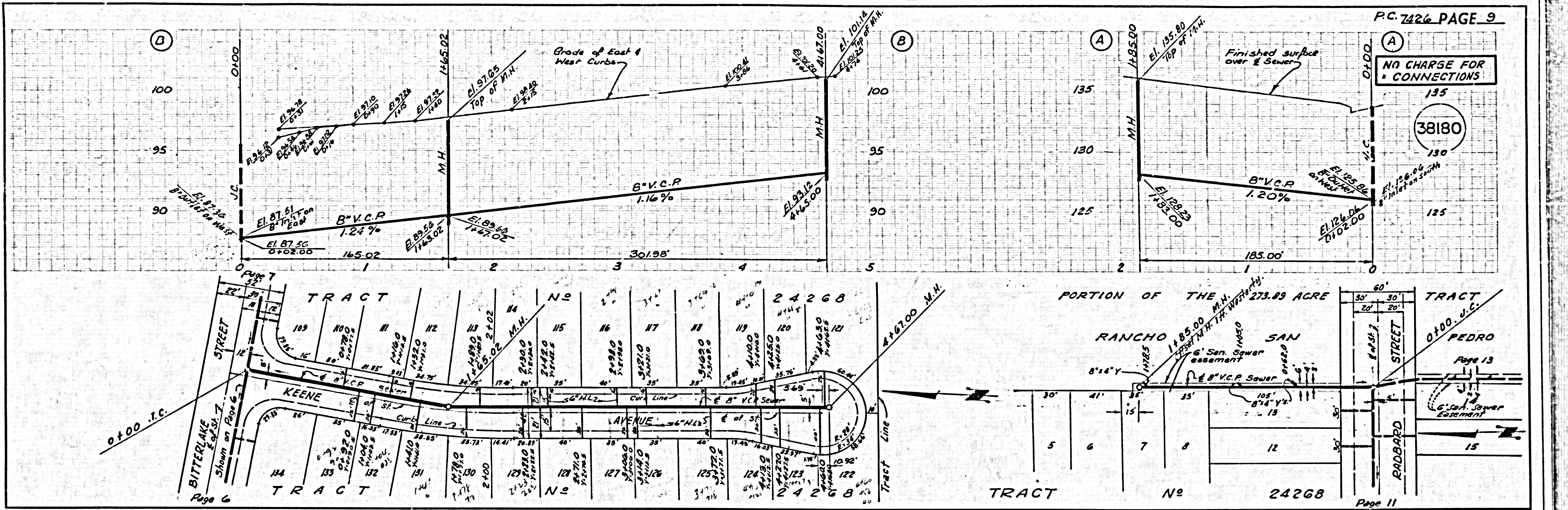




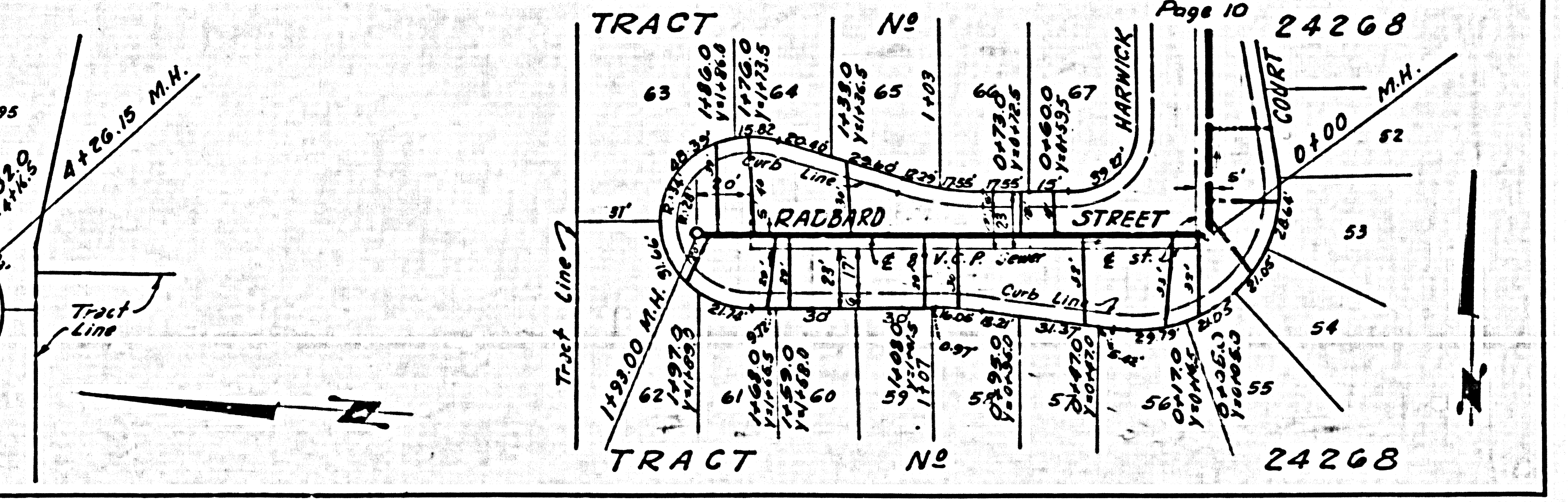
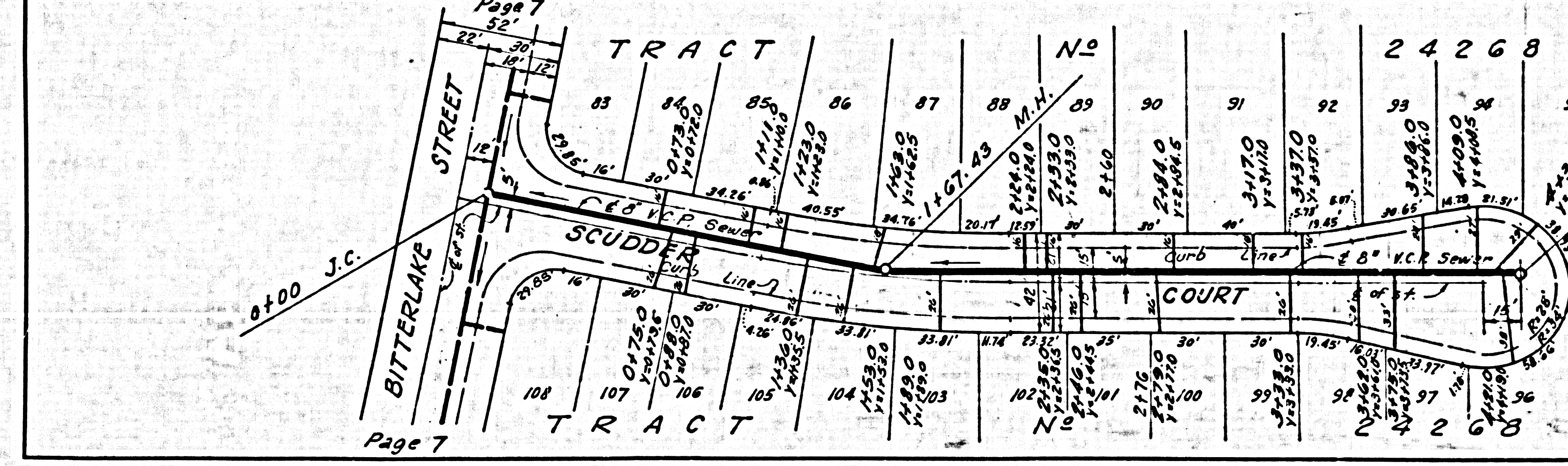
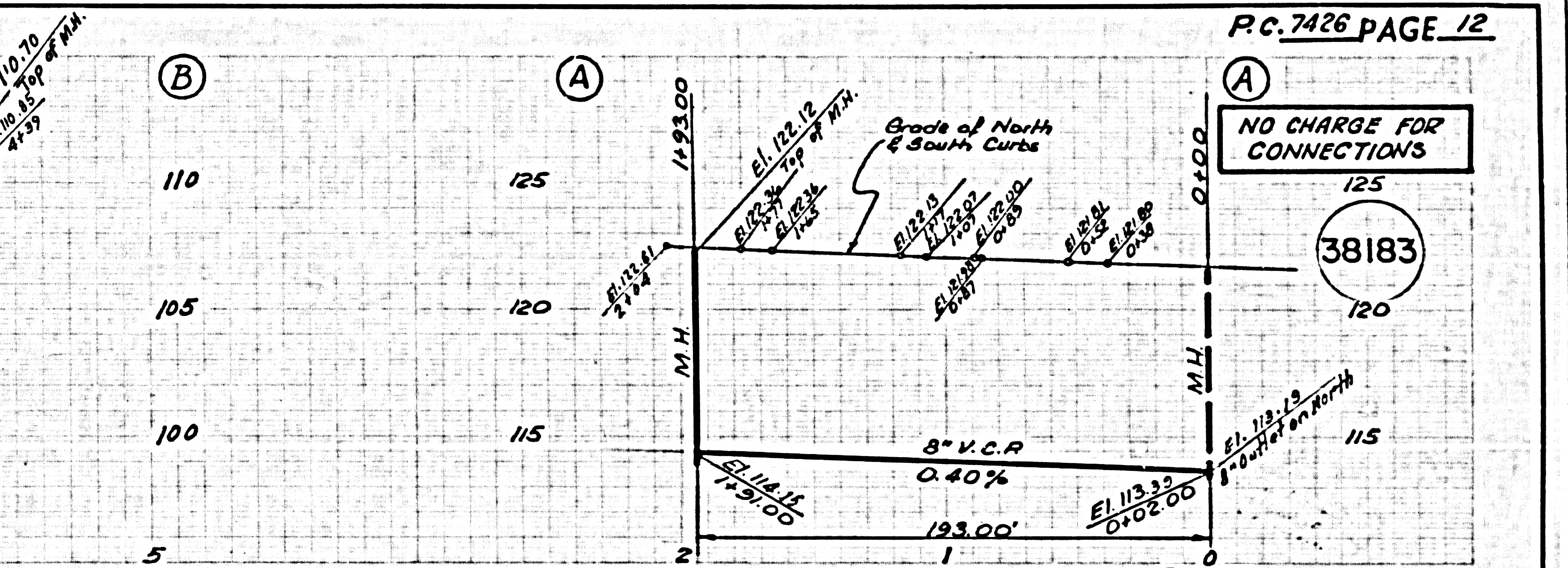
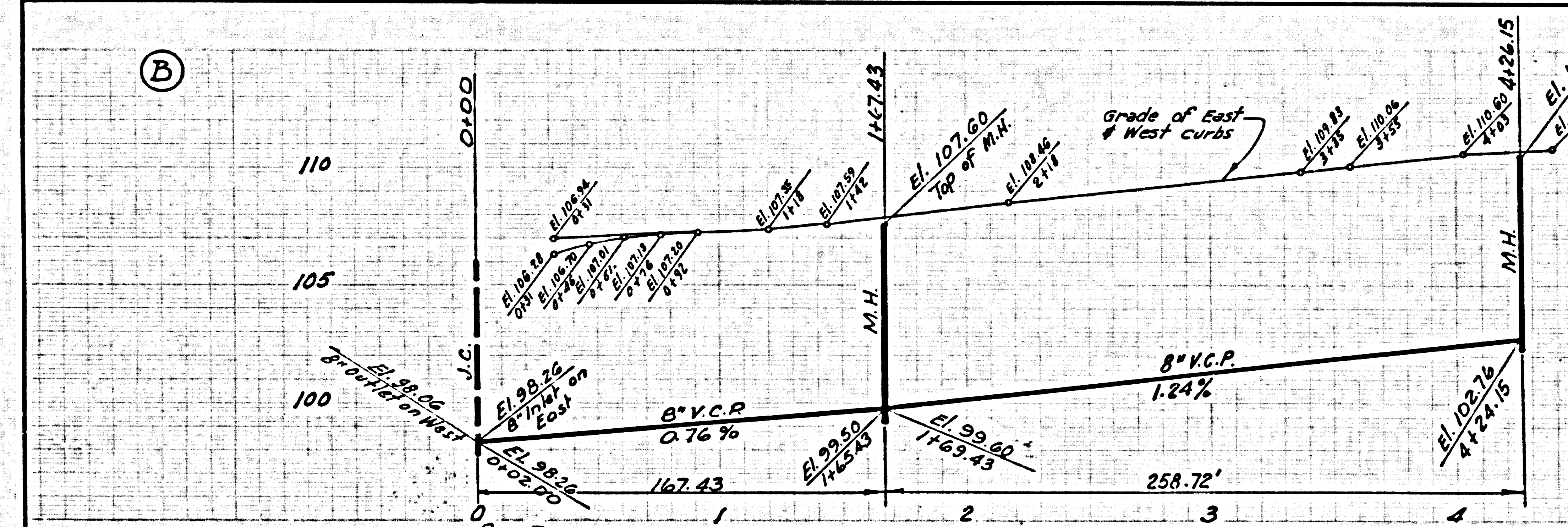
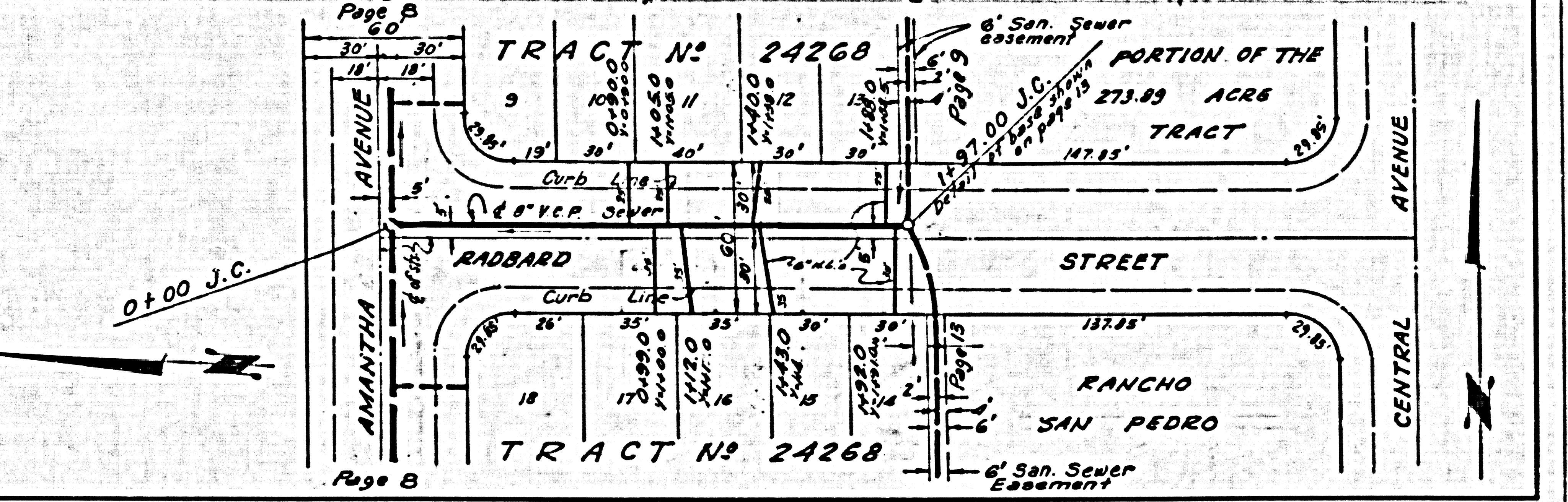
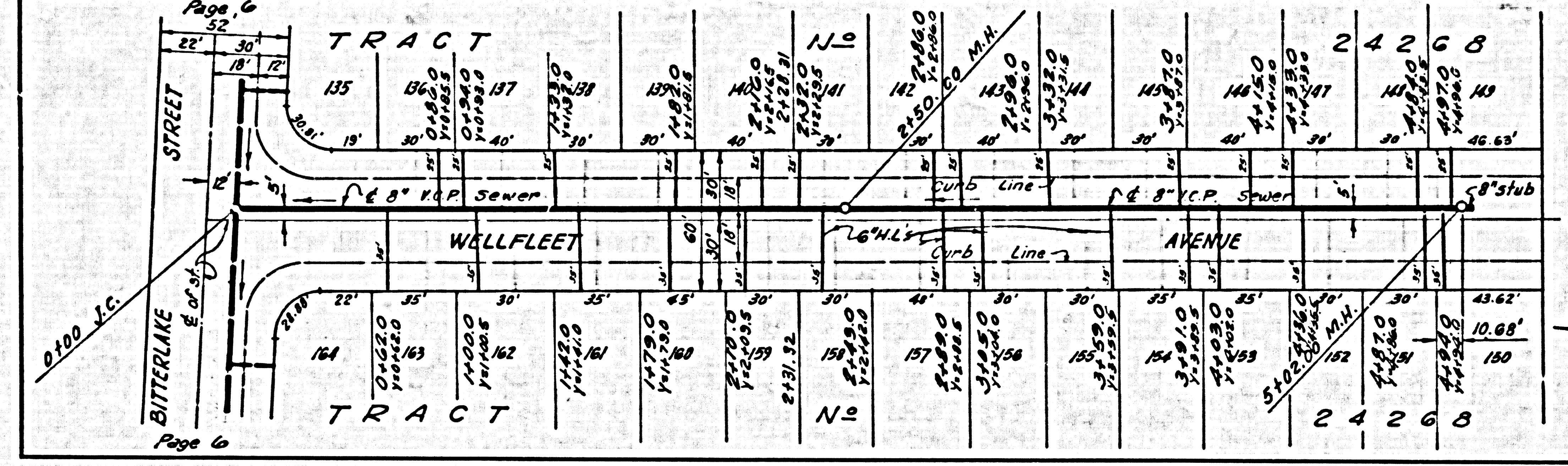
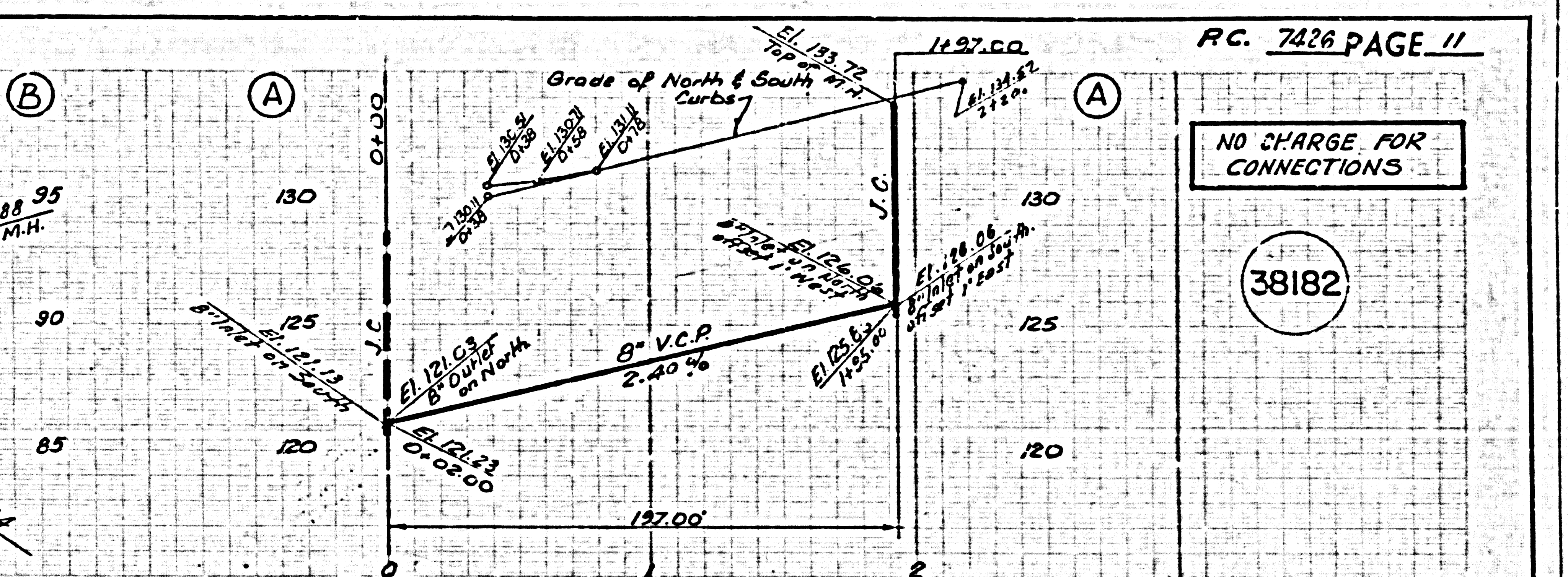
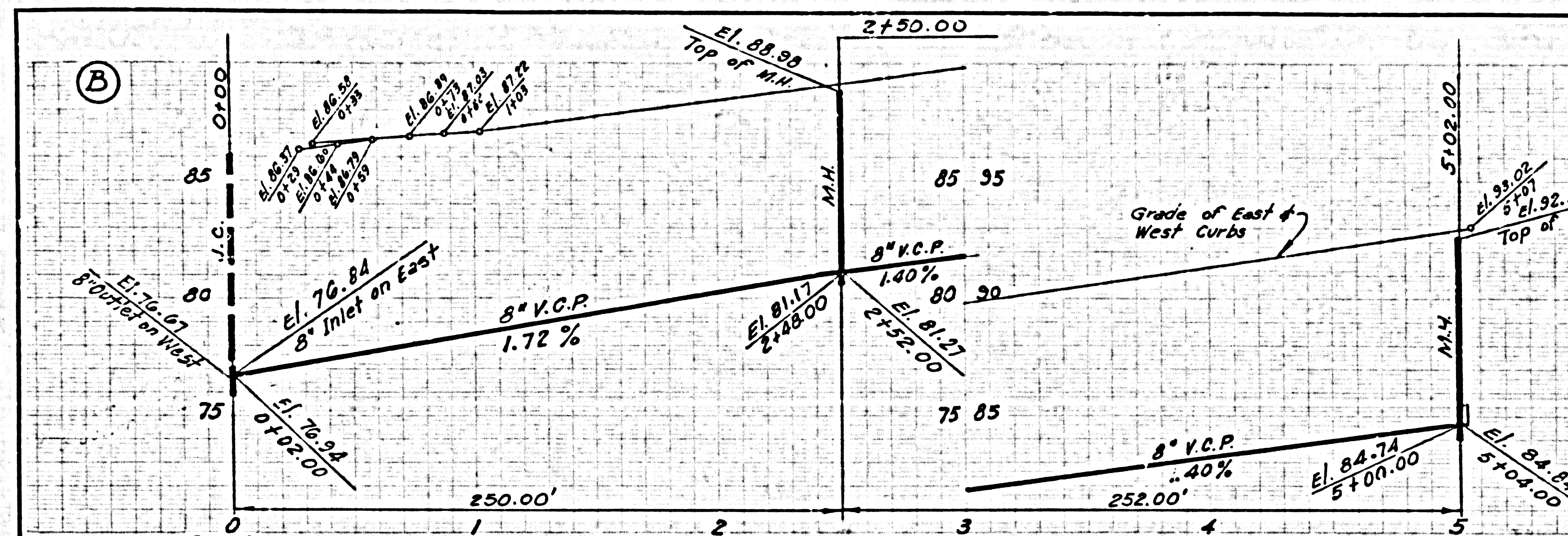












RC. 7426 PAGE 11

NO CHARGE FOR CONNECTIONS

38182

RC. 7426 PAGE 12

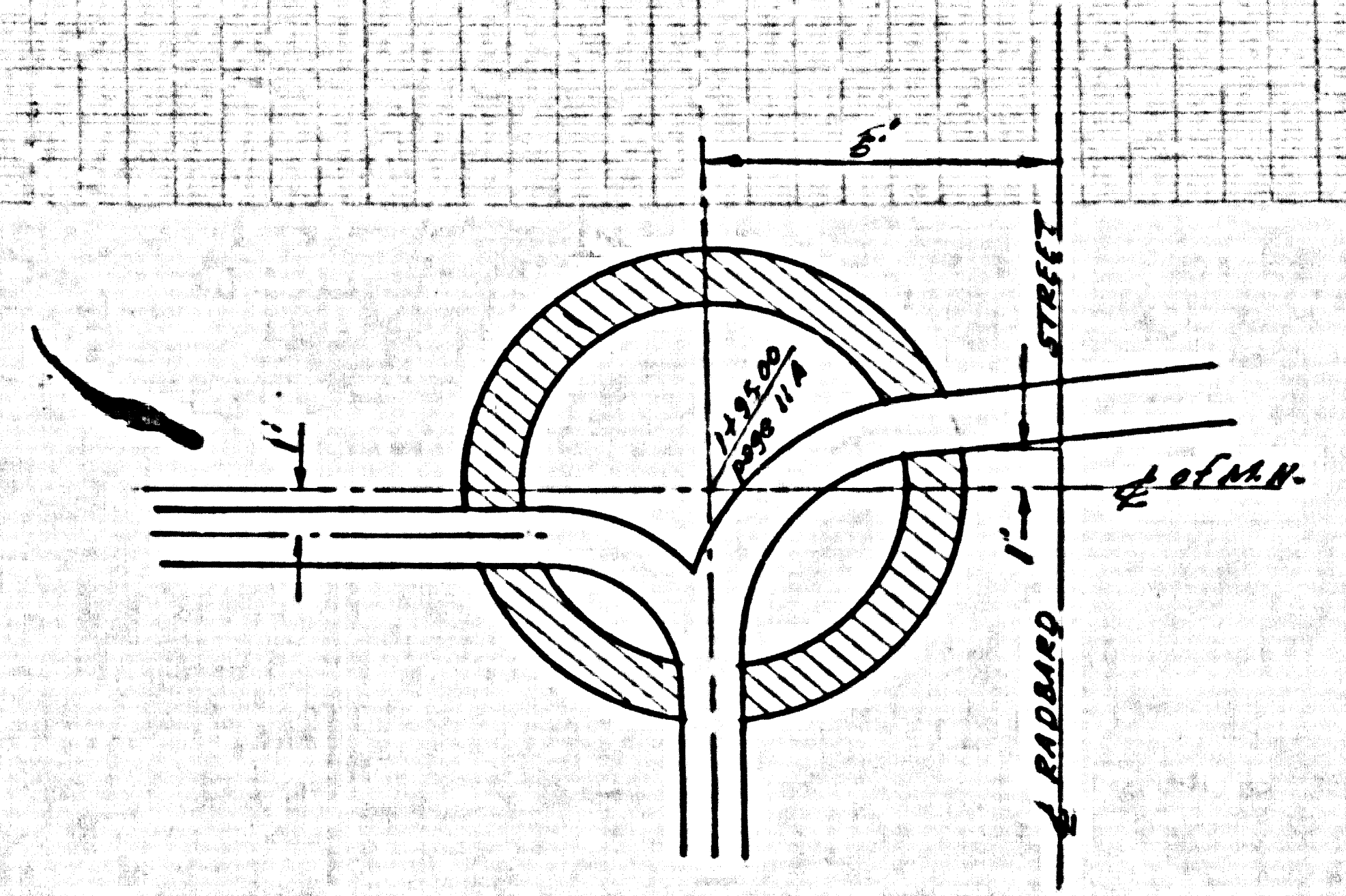
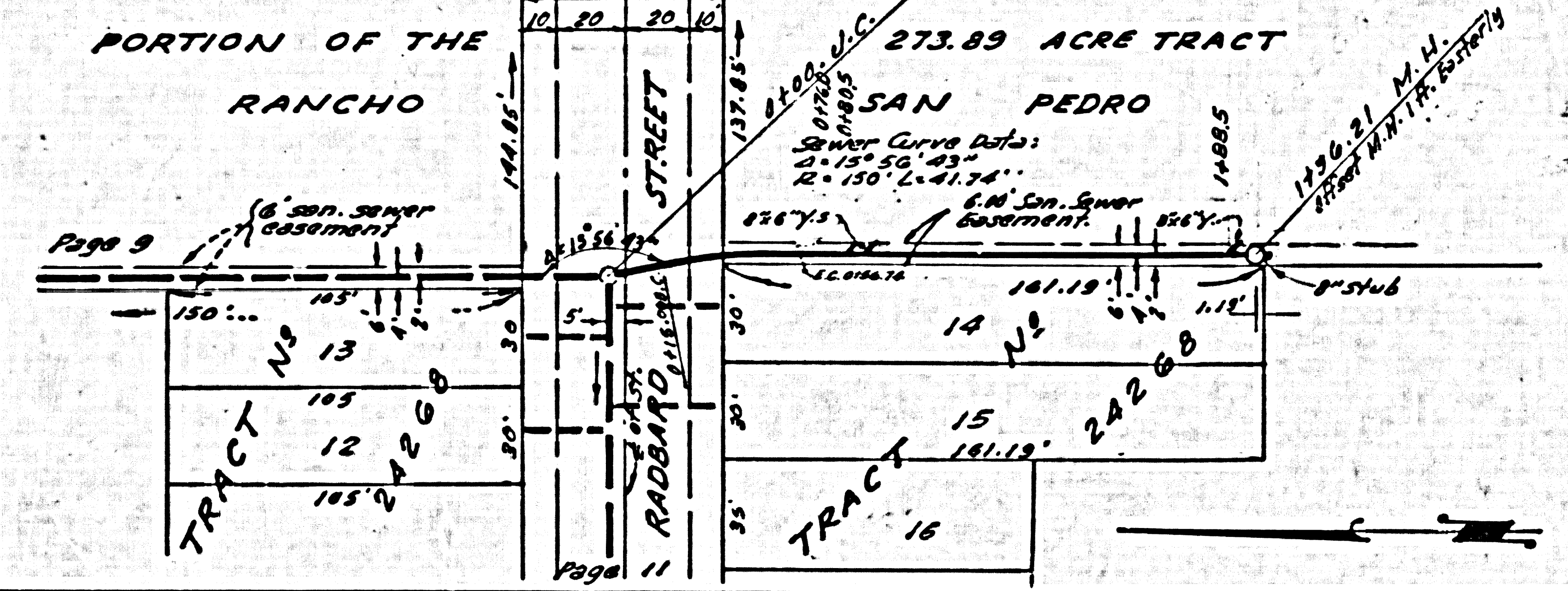
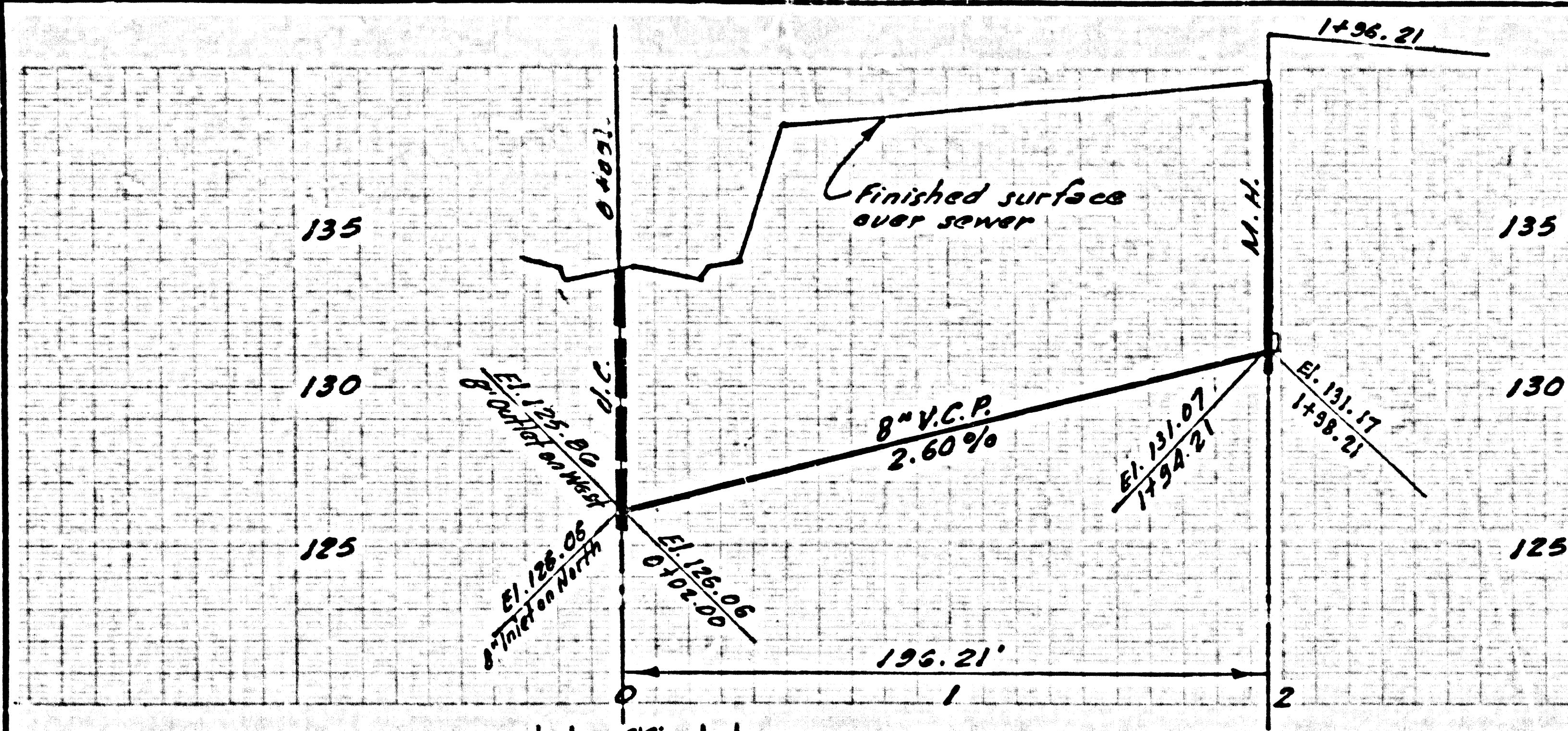
NO CHARGE FOR CONNECTIONS

38183



NO CHARGE FOR CONNECTIONS

38184



DETAIL OF M.H. BASE AT STA. 1+95.00  
PAGE 11 A