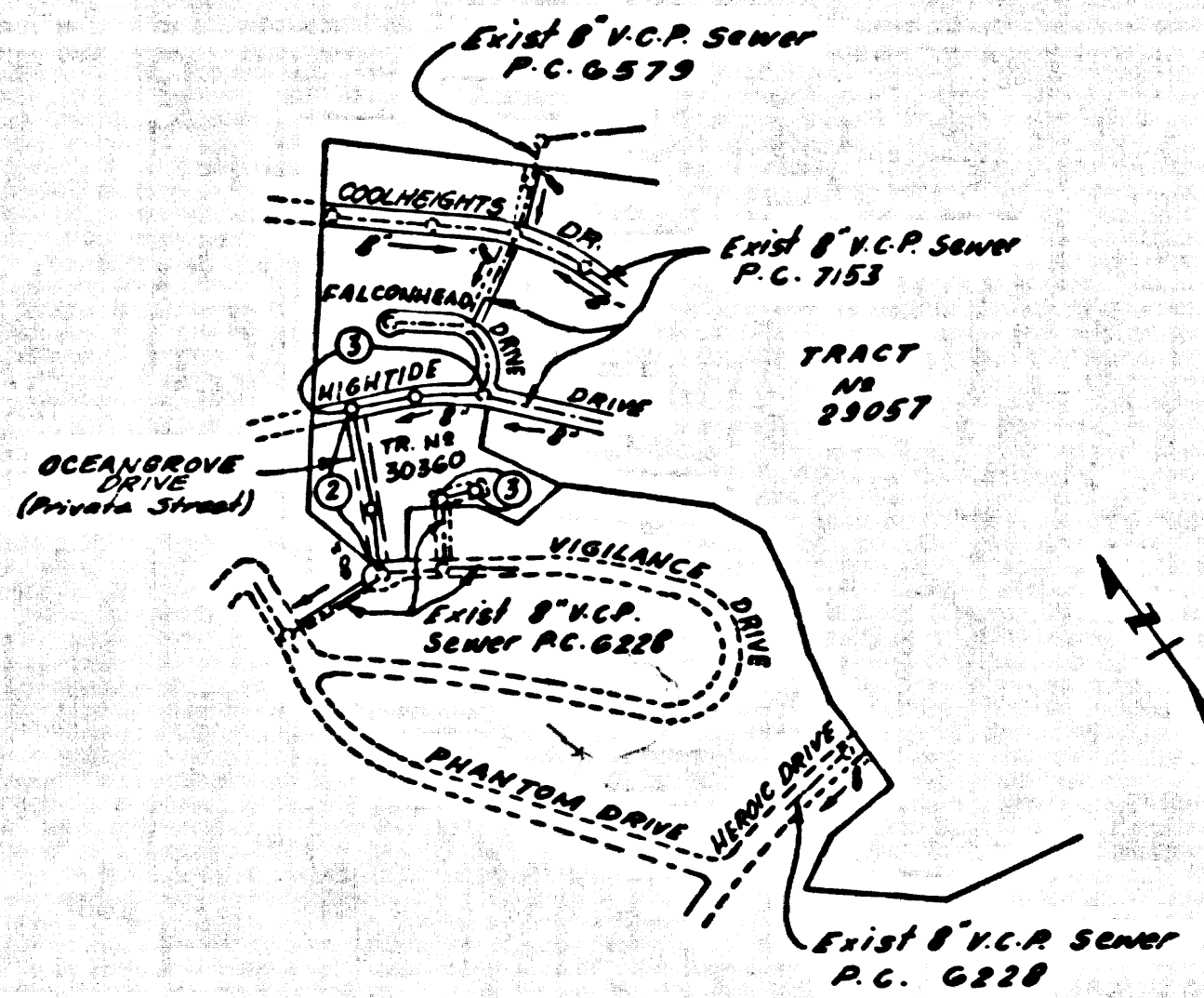


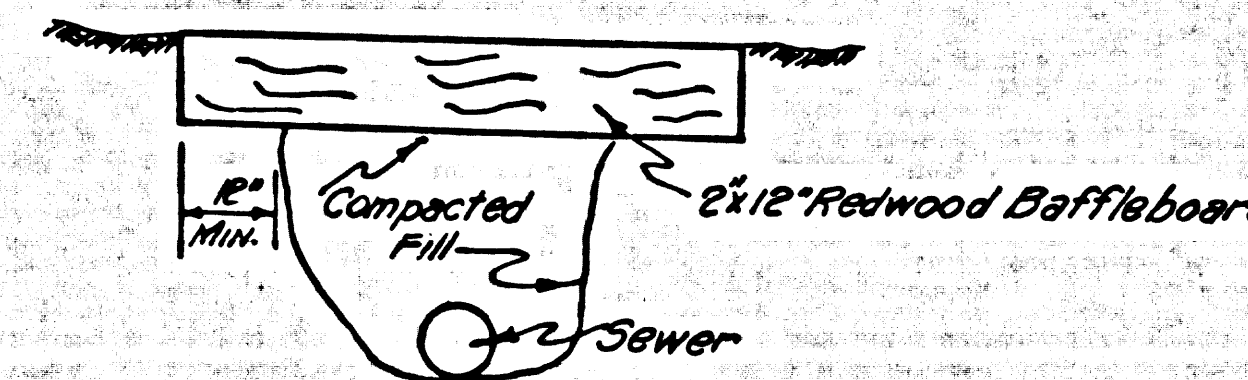
B.M. 57 6003 ELEV. 316.680  
 R.D.B.M. Tg. N. Cb. 1'S E B.C.R. at N.E.  
 Cor. Palos Verdes Drive East & Casiline  
 DRNG 40± N., 55± E & Intersection  
 PALOS VERDES QUAD. 19 60



Note: Numbers in circles represent page numbers.

INDEX MAP  
 TRACT No 30360  
 P.C. No 7427  
 SCALE 1"=600'

REVISION	
PAGE 3 (A)	THE MANHOLE TO BE CONSTRUCTED OVER THE EXIST. SEWER WITHIN LOT 8, WAS MOVED 10' TO THE NORTH.
BY: David M. Wood S-A-66	DAVID M. WOODS R.E. TESTS
Checked by: Samuel J. Valdez S-A-66	OFFICE OF THE COUNTY ENGINEER



**BAFFLE DETAIL**  
 Each end of baffle is to extend one foot into undisturbed ground. The baffle boards shall be spaced so the top of the lower board is level with the bottom of the next higher board. The upper one foot layer of the backfill is to be 150 soil, tamped in place, planted with mustard and rye grass and watered until growth is restored.

**DOUBLE SCALE**  
**LOMITA BLDG. DIST. NO. 12**

PROFILE ALIGNMENT AND GRADE OF  
**SANITARY SEWERS** PAGE 1  
 TO BE CONSTRUCTED IN

TRACT No 30360  
**PRIVATE CONTRACT NO. 7427**

W.S. 27  
 2 SHEETS, 3 PAGES  
 SCALE: VERT. 1"=8' AUGUST, 1965 38575  
 PREPARED IN THE OFFICES OF  
 Development Consultants, Inc.  
 ENGINEERING DIVISION  
 1841 E. California Blvd., Pasadena, California  
 REG. C. E. NO. 2853  
 FOR LEGEND SEE PLAN NO. S-1

- NOTE:
1. PROFILE STAKES ON THE PROPERTY LINE OR PROPERTY LINES PROVIDED AT RIGHT ANGLES TO THE SEWER LINE AT THE CENTER LINE OF EACH MANHOLE.
  2. NO REPRESENTATIVE OF THE COUNTY ENGINEER WILL SURVEY OR LAY OUT ANY PORTION OF THE WORK.
  3. THE PRIVATE ENGINEER SHALL FURNISH THE COUNTY ENGINEER WITH GRADE SHEETS AND STATIONING FOR ALL HOUSE LATERALS AND Y BRANCHES AND SHALL PROVIDE STAKES FOR THEM AT THEIR PROPER LOCATIONS WITH STATIONINGS PLAINLY MARKED. ALL HOUSE LATERALS SHALL BE CONSTRUCTED IN A STRAIGHT ALIGNMENT AT RIGHT ANGLES TO THE MAIN LINE SEWER EXCEPT AS SHOWN ON THE PLANS. HOUSE LATERALS FROM CHIMNEYS SHALL NOT HAVE AN ANGLE OF LESS THAN 45° WITH THE MAIN LINE SEWER. ANY CHANGE IN ALIGNMENT SHALL BE REQUESTED IN WRITING BY THE PRIVATE ENGINEER.
  4. THE PRIVATE ENGINEER SHALL FURNISH THE HOUSE LATERAL DEPTH AT THE PROPERTY LINE BELOW THE TOP OF CURB ELEVATION FOR EACH HOUSE LATERAL ON THE GRADE SHEET.
  5. NO BYPASSING SHALL BE MADE IN THESE PLANS WITHOUT THE APPROVAL OF THE COUNTY ENGINEER.
  6. THE CONTRACTOR SHALL NOTIFY THE CONSTRUCTION DIVISION BY TELEPHONE, MADISON 9-0707, EXT. 8838, AT LEAST TWENTY-FOUR HOURS BEFORE STAKING ANY WORK UNDER THIS CONTRACT.
  7. MANHOLES SHALL BE BRICK SEWER STRUCTURES PER S-3 PRECAST CONCRETE MANHOLES PER S-5-F OR S-5-G MAY BE USED AS AN ALTERNATE IN LOCATIONS APPROVED BY THE COUNTY ENGINEER.
  8. THE STANDARD MANHOLE PLANS AND COVERS, S-5-D, EXCEPT AS NOTED.
  9. MANHOLE TOPS BE UNAPPROVED SHORTER OR DEEPER TO BE 24 INCHES ABOVE FINISHED GRADE.
  10. USE EXTRA STRENGTH PIPE ALL PIPE IS STANDARD DEPTH EXCEPT AS NOTED.
  11. USE 20-MINUTE-WATER-RESISTANT MECHANICAL COMPRESSION JOINTS FOR ALL V.C.P. JOINTS PER SPEC., SECT. 24 & 44.143.
  12. WHENEVER SEWER LATERALS ARE DISCONTINUED OR ABANDONED THE CONTRACTOR SHALL BE RESPONSIBLE FOR THE PROPER CLOSURE OF SUCH LATERALS PER SPEC., SECT. 24.
  13. IF A POWER POLE IS WITHIN THREE FEET OF THE SEWER, THE SEWER SHALL BE CHANGED, PER S-2-3 TWO FEET ON EACH SIDE FROM THE POINT OF INTERFERENCE.
  14. IF DURING THE COURSE OF CONSTRUCTION IT IS DETERMINED THAT THERE IS LESS THAN FOUR FEET OF COVER OVER THE TOP OF A MAIN LINE OR HOUSE LATERAL V.C.P. SEWER WHICH IS NOT INDICATED ON THE PLANS, THE PIPE SHALL BE CHANGED PER S-2-3 UNLESS OTHERWISE APPROVED BY THE COUNTY ENGINEER.
  15. HOUSE LATERALS TO BE CONSTRUCTED WITH INVERTS AT PROPERTY LINE. . . . FEET BELOW CURB GRADE EXCEPT AS NOTED.
  16. RESURFACE ALL TRENCHES WITHIN PAVED AREAS TO MEET L.A. COUNTY ROAD DEPT. OR CALIFORNIA STATE HIGHWAY REQUIREMENTS IN ACCORDANCE WITH PERMITS.
  17. FOR ALTERNATE LEGAL USE FORMULA NO. 2, L.S. SPEC., SEC. 24.
  18. ALL STATE AND LOCAL TRENCH ORDINANCES SHALL BE STRICTLY ENFORCED.
  19. CONSTRUCTION IN FILLED AREAS.
  20. ANY ACCEPTABLE CERTIFICATION OF COMPLETION TEST RESULTS SHALL BE SUBMITTED TO THE CONSTRUCTION DIVISION. COMPLETION TESTS ARE TO BE MADE IN ACCORDANCE WITH A.S.T.M. STANDARD METHOD OF TEST D-688-47T.
  21. NO CONSTRUCTION IS PERMITTED IN FILLED AREAS WHERE THE RELATIVE DENSITY OF COMPRESSION IS LESS THAN 90%.
  22. IF THE RELATIVE DENSITY OF COMPRESSION IS LESS THAN 90%, ALL MAIN LINE AND HOUSE LATERALS SHALL BE CAPPED PER S-2-3 OR HAVE A SPECIAL BASE COURSE PER S-2-1. SPECIAL MANHOLES SHALL PER S-1-16 ARE REQUIRED.
  23. IF THE RELATIVE DENSITY OF COMPRESSION IS 90% OR GREATER, THE SPECIAL PROVISIONS IN (C) ARE REQUIRED.
  24. WHENEVER STAKES ARE SHOWN AT THE END OF HOUSE LATERALS THE LOCATION OF SUCH HOUSE LATERALS SHALL NOT BE MOVED ABOVE THE STATION INDICATED.

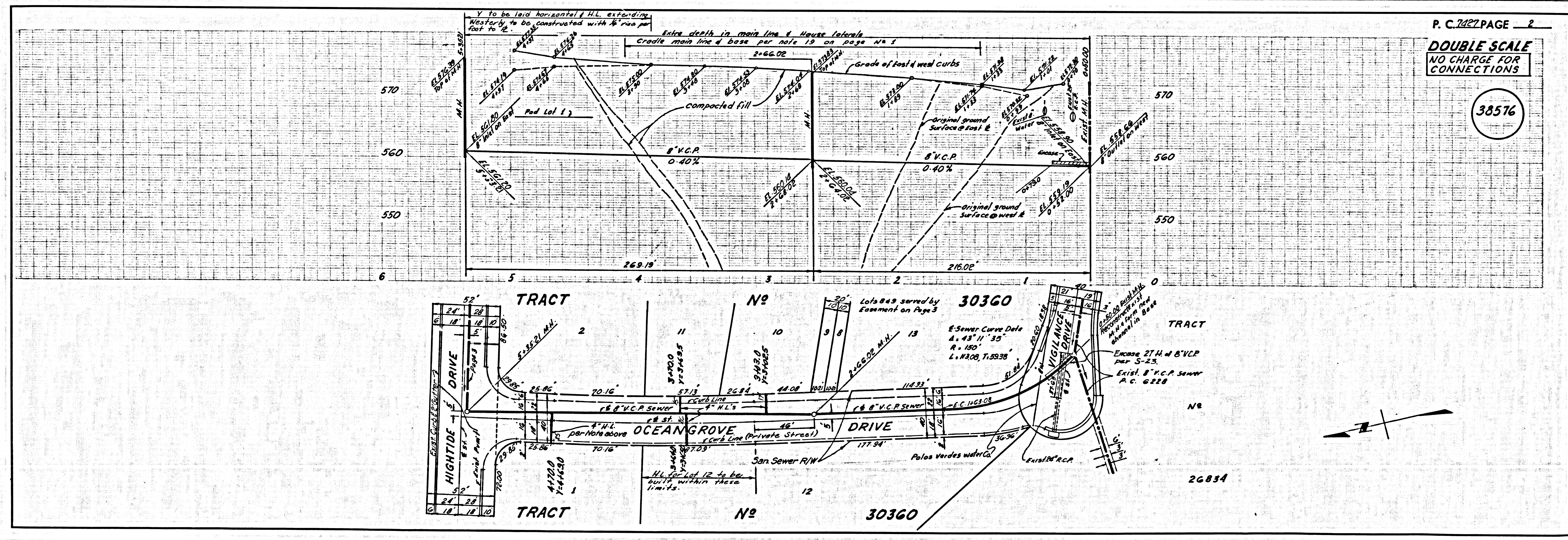
**COLLECT CHARGES AS INDICATED**  
 Ronald Weber 1-4-66

NO CONNECTIONS FOR THE DISPOSAL OF INDUSTRIAL WASTES SHALL BE MADE TO SEWERS SHOWN ON THESE DRAWINGS WITHOUT WRITTEN PERMISSION FROM THE CHIEF ENGINEER AND GENERAL MANAGER OF THE COUNTY SANITATION DISTRICTS.

NOTE:  
 GRADES TO WHICH THIS IMPROVEMENT IS TO BE CONSTRUCTED ARE SHOWN ON PLANS AND PROFILES. GRADE POINTS FOR TOP OF CURBS, CENTER LINE OF STREETS, OR CENTER LINE OF ALLEYS ARE SHOWN BY CIRCLES OR SQUARES. AT ALL POINTS BETWEEN DESIGNATED POINTS THE GRADE SHALL BE ESTABLISHED SO AS TO CONFORM TO A STRAIGHT LINE DRAWN BETWEEN SAID DESIGNATED POINTS. ELEVATIONS ARE IN FEET ABOVE U.S.C. & G.S. MEAN LEVEL DATUM OF 1929.  
 THIS DRAWING AND THE DATA HEREON ARE HEREBY MADE A PART OF THE SPECIFICATIONS.  
 BEFORE WORK CAN BE STARTED, THE CONTRACTOR MUST OBTAIN A PERMIT TO EXCAVATE IN COUNTY STREETS FROM THE L.A. COUNTY ROAD DEPT., DISTRICT OFFICE NO. 3, 1100 PAV A RD TO THE COUNTY ENGINEER, ROOM 300, COUNTY ENGINEERING BUILDING, 100 WEST SECOND STREET ON PASEO DE LA CALLE, CANTONWOOD, CALIF. PERSONAL OFFICE, SUFFICIENT TO COVER THE COST OF CONSTRUCTION INSPECTION AND RECORD PLANS.  
 APPROVAL OF THIS PLAN BY THE COUNTY OF LOS ANGELES DOES NOT CONSTITUTE A REPRESENTATION AS TO THE ACCURACY OF THE LOCATION OF OR THE EXISTENCE OR NON-EXISTENCE OF ANY UNDERGROUND UTILITY PIPE, OR STRUCTURE WITHIN THE LIMITS OF THIS PROJECT. THIS NOTE APPLIES TO ALL PAGES.  
 IF WORK IS TO BE DONE IN A STATE HIGHWAY, A PERMIT MUST BE OBTAINED FROM THE STATE OF CALIFORNIA, DIVISION OF HIGHWAYS, 1200 SOUTH SPRING STREET, LOS ANGELES, CALIFORNIA.

COUNTY OF LOS ANGELES, CALIFORNIA  
 JOHN A. LAMBIE, COUNTY ENGINEER J. D. PARKHURST, CHIEF ENGINEER  
 CO. SAN. DIST. NO. 12  
 APPROVED BY: [Signature] APPROVED BY: [Signature]  
 ASSISTANT SANITATION ENGINEER OFFICE ENGINEER  
 SUBMITTED BY: [Signature] SPECIAL ENGINEER  
 CHECKED BY: [Signature] REG. C.E. NO. 10653

J.N. 0366.15



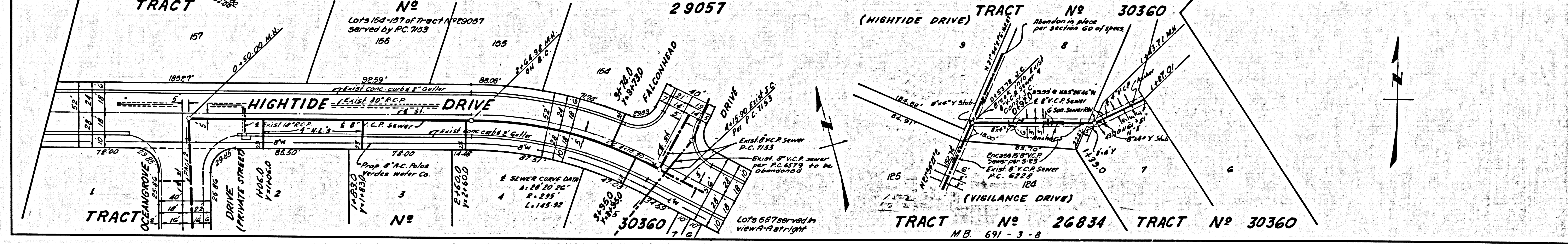
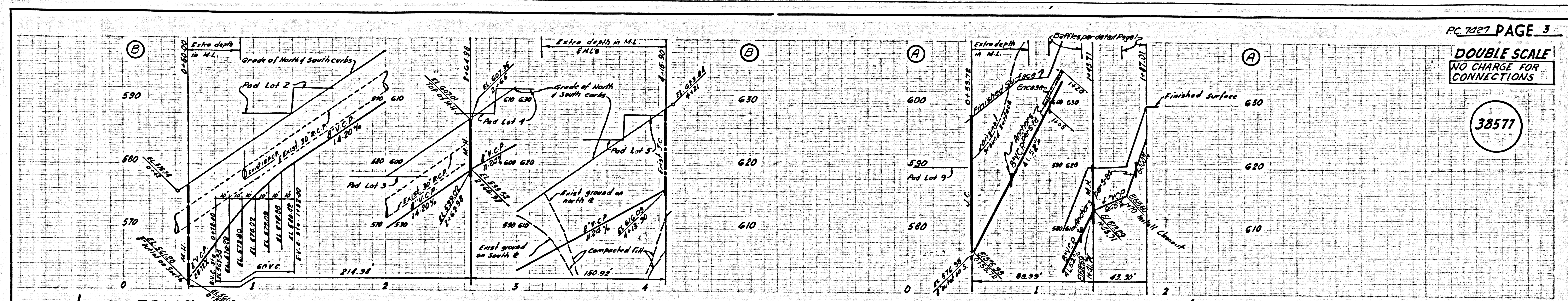
P.C. 7427 PAGE 2  
**DOUBLE SCALE**  
**NO CHARGE FOR CONNECTIONS**

38576



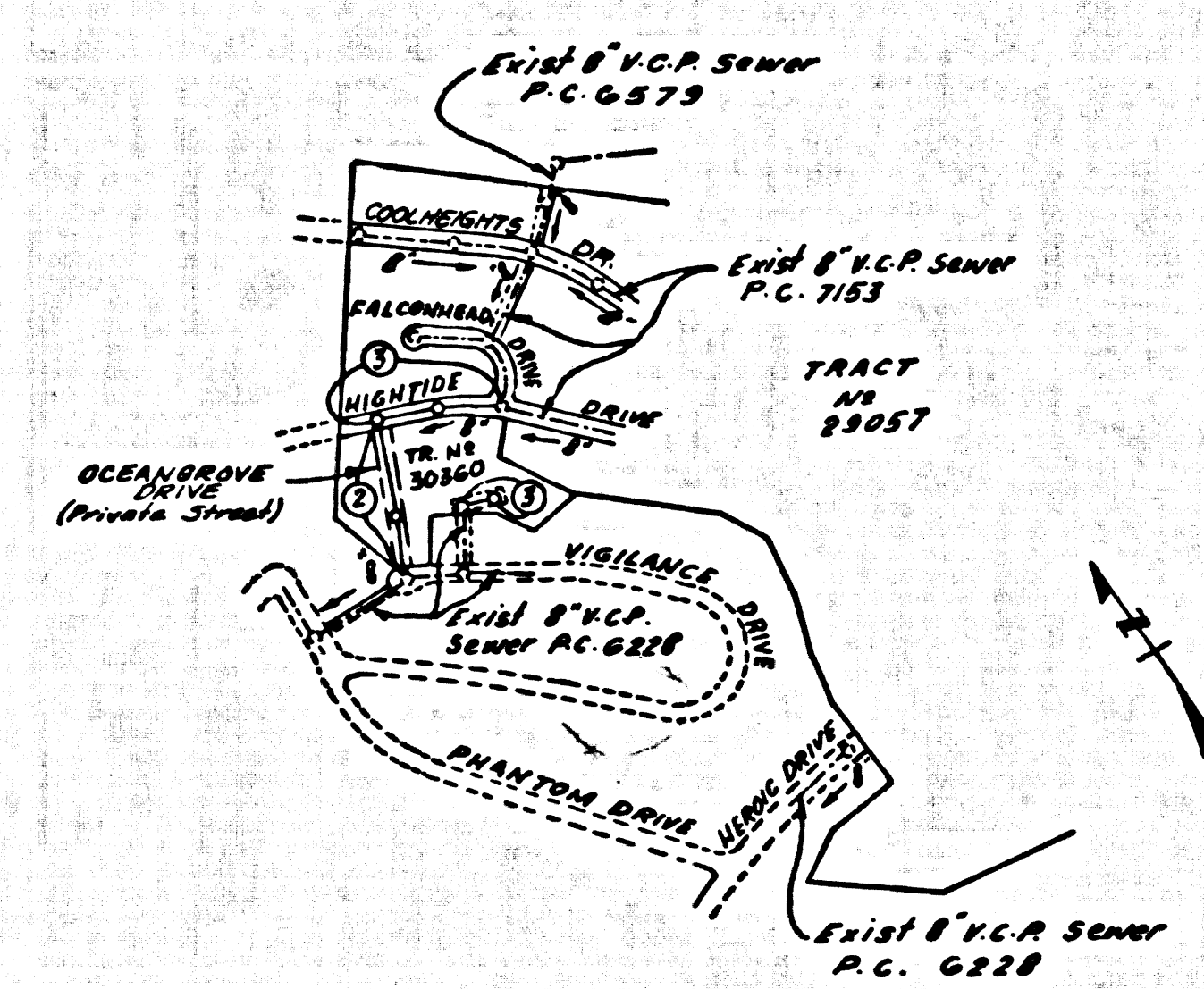
DOUBLE SCALE  
NO CHARGE FOR  
CONNECTIONS

38571





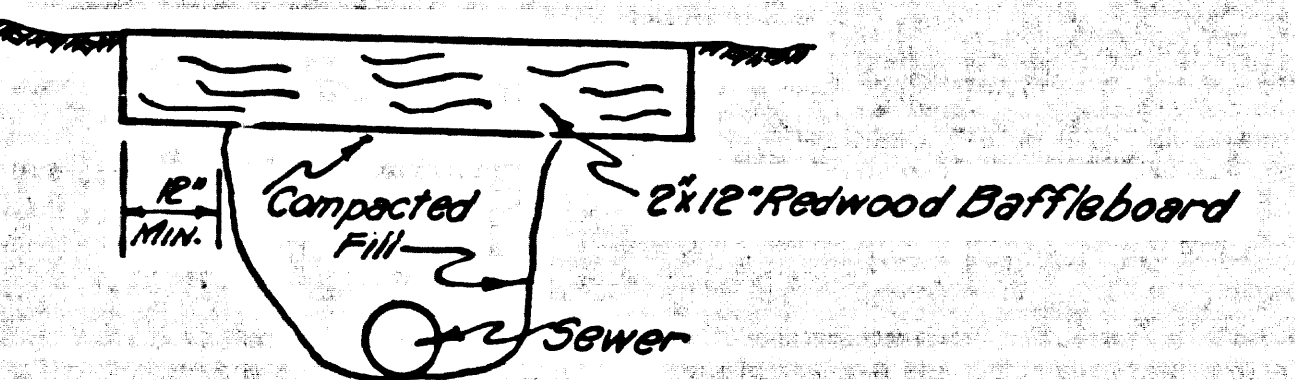
B.M. 516003 ELEV. 316.680  
 R.D.B.M. Top N. Ch. 1' E B.C.R. of N.E.  
 Cor. Palos Verdes Drive East & Casline  
 Drive 40' N., 55' E & Intersection  
 PALOS VERDES QUAD. 19 60



Note: Numbers in circles represent page numbers.

INDEX MAP  
 TRACT No 30360  
 P.C. No 7427  
 SCALE 1"=600'

REVISION	
PAGE 3 (A)	THE MANHOLE TO BE CONSTRUCTED UNDER THE EXIST. SEWER WITHIN LOT 8 WAS MOVED 10' TO THE NORTH.
BY David M. Wood 5-A-66	DAVID M. WOODS R.E. 12373
Examined & Verified 3-8-66 OFFICE OF THE COUNTY ENGINEER	



**BAFFLE DETAIL**  
 Each end of baffle is to extend one foot into undisturbed ground. The baffle boards shall be spaced so that the top of the lower board is level with the bottom of the next higher board. The upper one foot layer of the backfill to be top soil, rammed in place, planted with mustard and rye grass and watered until growth is restored.

DOUBLE SCALE  
 LOMITA BLDG. DIST. NO. 12

PROFILE ALIGNMENT AND GRADE OF  
 SANITARY SEWERS PAGE 1  
 TO BE CONSTRUCTED IN

TRACT No 30360  
 PRIVATE CONTRACT NO. 7427

W.S. 27  
 SHEETS, 3 PAGES  
 SCALE: HORIZ. 1"=40' VERT. 1"=4'  
 AUGUST, 1963 38575

PREPARED IN THE OFFICE OF  
 DEVELOPMENT CONSULTANTS, INC.  
 ENGINEERING DIVISION  
 1901 S. Colorado Blvd., Pasadena, California  
 BY: J. J. Skand  
 REG. C.E. NO. 3322

FOR LEGEND SEE PLAN NO. 5-1

- NOTES:
- PROVIDE STAKES ON THE PROPERTY LINE OR PROPERTY LINES PRODUCED AT RIGHT ANGLES TO THE SEWER LINE AT THE CENTER LINE OF EACH MANHOLE.
  - NO REPRESENTATIVE OF THE COUNTY ENGINEER WILL SURVEY OR LAY OUT ANY PORTION OF THE WORK.
  - THE PRIVATE ENGINEER SHALL FURNISH THE COUNTY ENGINEER WITH GRADE SHEETS AND STATIONING FOR ALL HOUSE LATERALS AND T-BRANCHES AND SHALL PROVIDE STAKES FOR THESE AT THEIR PROPER LOCATIONS WITH STATIONING PLAINLY MARKED. ALL HOUSE LATERALS SHALL BE CONSTRUCTED IN A STRAIGHT ALIGNMENT AT RIGHT ANGLES FROM THE MAIN LINE SEWER EXCEPT AS SHOWN ON THE PLANS. HOUSE LATERALS FROM CHIMNEYS SHALL NOT HAVE AN ANGLE OF LESS THAN 45° WITH THE MAIN LINE SEWER. ANY CHANGE IN ALIGNMENT SHALL BE REQUESTED BY WRITING BY THE PRIVATE ENGINEER.
  - THE PRIVATE ENGINEER SHALL FURNISH THE HOUSE LATERAL DEPTH AT THE PROPERTY LINE BELOW THE TOP OF CURB ELEVATION FOR EACH HOUSE LATERAL ON THE GRADE SHEET.
  - NO REVISIONS SHALL BE MADE IN THESE PLANS WITHOUT THE APPROVAL OF THE COUNTY ENGINEER.
  - THE CONTRACTOR SHALL NOTIFY THE CONSTRUCTION DIVISION BY TELEPHONE, MADISON 9-2747, EXT. 2588, AT LEAST TWENTY-FOUR HOURS BEFORE STARTING ANY WORK UNDER THIS CONTRACT.
  - MANHOLES SHALL BE BRICK WORK STRUCTURES PER S-3 - FACED CONCRETE MANHOLES PER S-F OR S-G MAY BE USED AS AN ALTERNATE IN LOCATIONS APPROVED BY THE COUNTY ENGINEER.
  - USE STANDARD MANHOLE FRAMES AND COVERS, S-15, EXCEPT AS NOTED.
  - MANHOLE TOPS IN UNIMPROVED AREAS OR THAT TO BE IN AREAS ABOVE FINISHED GRADE.
  - USE EXTRA STRENGTH PIPE. ALL PIPE IS STANDARD DEPTH EXCEPT AS NOTED.
  - USE GERRARD-HUBBARD OR MECHANICAL COMPRESSION JOINTS FOR ALL V.C.P. JOINTS PER SPEC., SECS. 24 & 41, 43.
  - WHERE SHOWN OTHERWISE, ALL SEWERS SHALL BE CONSTRUCTED TO THE STANDARD DEPTH OF 4'-0" UNLESS OTHERWISE SPECIFIED.
  - IF A POWER POLE IS WITHIN THREE FEET OF THE SEWER, THE SEWER SHALL BE IN CASING, PER S-23 - TWO FEET ON EACH SIDE FROM THE POINT OF INTERFERENCE.
  - IF BY THE COURSE OF CONSTRUCTION IT IS DETERMINED THAT THERE IS LESS THAN FOUR FEET OF COVER OVER THE TOP OF A MAIN LINE OR HOUSE LATERAL V.C.P. SEWER WHICH IS NOT INDICATED ON THE PLANS, THE PIPE SHALL BE IN CASING PER S-23 UNLESS OTHERWISE APPROVED BY THE COUNTY ENGINEER.
  - HOUSE LATERALS TO BE CONSTRUCTED WITH INVERTS AT PROPERTY LINE... FEET BELOW CURB GRADE EXCEPT AS NOTED.
  - RESURFACE ALL TRENCHES WITHIN PAVED AREAS TO MEET L.A. COUNTY ROAD DEPT. OR CALIFORNIA STATE HIGHWAY REQUIREMENTS IN ACCORDANCE WITH PERMITS.
  - FOR SUBURBAN AREAS USE THE FORMULA NO. 100... SPEC. SEC. 41.
  - ALL STATE AND LOCAL TRENCH ORDERS MUST BE RIGIDLY ENFORCED.
  - NO CONSTRUCTION IN FILLED AREAS.
  - AN ACCEPTABLE CERTIFICATION OF COMPACTION TEST RESULTS SHALL BE SUBMITTED TO THE CONSTRUCTION DIVISION. COMPACTION TESTS ARE TO BE MADE IN ACCORDANCE WITH A.S.T.M. STANDARD METHOD OF TEST D-293-52T.
  - NO CONSTRUCTION IS PERMITTED IN FILLED AREAS WHERE THE RELATIVE DENSITY OF COMPACTION IS LESS THAN 90%.
  - IF THE RELATIVE DENSITY OF COMPACTION IS LESS THAN 90%, ALL MAIN LINE AND HOUSE LATERALS SHALL BE CRODDED PER S-23 OR HAVE A SPECIAL BASE COURSE PER S-21. SPECIAL MANHOLE BASES PER S-15 ARE REQUIRED.
  - IF THE RELATIVE DENSITY OF COMPACTION IS 90% OR GREATER, THE SPECIAL PROVISIONS IN (C) ARE REQUIRED.
  - WHERE STATIONS ARE SHOWN AT THE END OF HOUSE LATERALS THE LOCATION OF SUCH HOUSE LATERALS SHALL NOT BE MOVED ABOVE THE STATION INDICATED.

NOTES:  
 GRADES TO WHICH THE IMPROVEMENT IS TO BE CONSTRUCTED ARE SHOWN ON PLANS AND PROFILES. GRADE POINTS FOR TOP OF CURBS, CENTER LINE OF STREETS, OR CENTER LINE OF ALLEYS ARE SHOWN BY CIRCLES ON PROFILES. AT ALL POINTS BETWEEN DESIGNATED POINTS THE GRADE SHALL BE ESTABLISHED SO AS TO CONFORM TO A STRAIGHT LINE DRAWN BETWEEN SAID DESIGNATED POINTS. REVISIONS ARE IN FEET ABOVE U.S.C. & G.S. SEA LEVEL DATUM OF 1929.  
 THE DRAWING AND THE DATA HEREON ARE HEREBY MADE A PART OF THE SPECIFICATIONS.  
 WORK SHALL BE CONSTRUCTED ACCORDING TO STANDARD SPECIFICATIONS DATED JANUARY 1, 1962, ON FILE IN THE OFFICE OF THE COUNTY ENGINEER AND SHALL BE PROSECUTED ONLY IN THE PRESENCE OF THE COUNTY ENGINEER.  
 BEFORE WORK CAN BE STARTED, THE CONTRACTOR MUST OBTAIN A PERMIT TO EXCAVATE IN COUNTY STREETS FROM THE L.A. COUNTY ROAD DEPT., DISTRICT OFFICE NO. 3... AND PAY A FEE TO THE COUNTY ENGINEER, ROOM 300, COUNTY ENGINEERING BUILDING, 100 WEST GARDEN STREET OR PALOS VERDES, CALIFORNIA, 91024. SPECIAL OFFICE, SUPPLEMENT TO COVER THE COST OF CONSTRUCTION INSPECTION AND RECORD PLANS.  
 APPROVAL OF THIS PLAN BY THE COUNTY OF LOS ANGELES DOES NOT CONSTITUTE A REPRESENTATION AS TO THE ACCURACY OF THE LOCATION OR OF THE EXISTENCE OR NON-EXISTENCE OF ANY UNDERGROUND UTILITY PIPE, OR STRUCTURE WITHIN THE LIMITS OF THE PROJECT. THIS NOTE APPLIES TO ALL PAGES.  
 IF WORK IS TO BE DONE IN A STATE HIGHWAY, A PERMIT MUST BE OBTAINED FROM THE STATE OF CALIFORNIA, DIVISION OF HIGHWAYS, 120 SOUTH BRINK STREET, LOS ANGELES, CALIFORNIA.

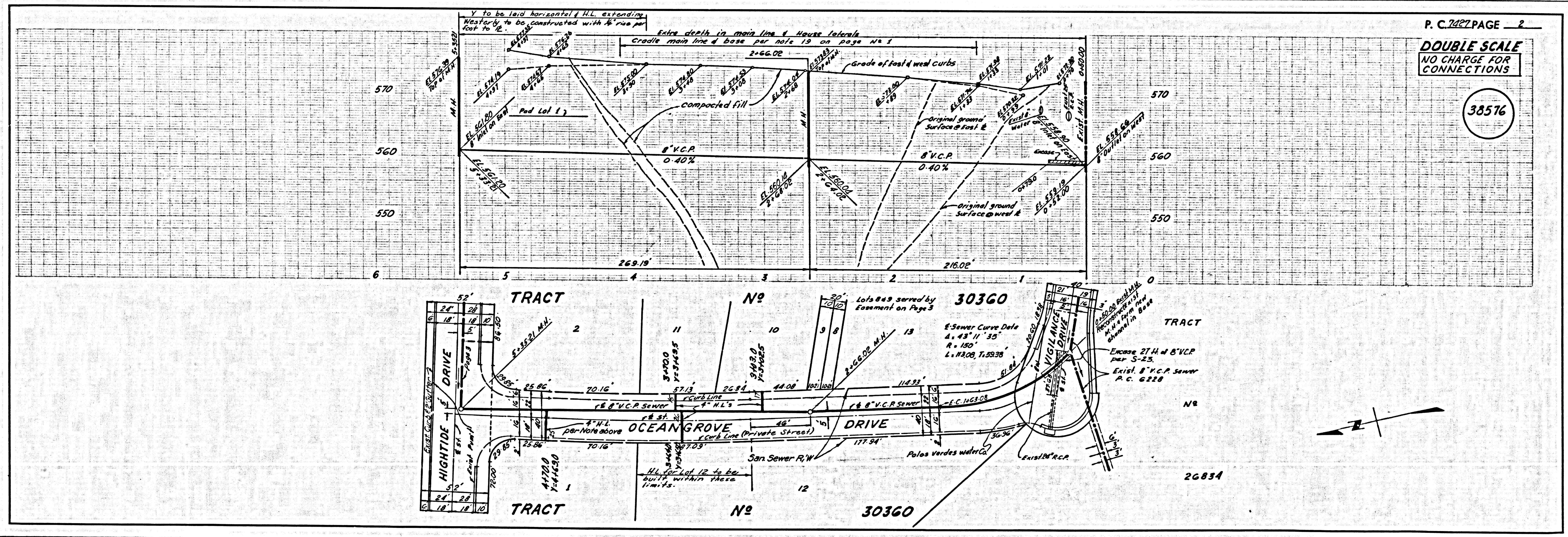
COUNTY OF LOS ANGELES, CALIFORNIA  
 JOHN A. LAMBIE, COUNTY ENGINEER J. D. PARKHURST, CHIEF ENGINEER  
 CO. SAN. DIST. NO. 12

APPROVED BY: [Signature] ASSISTANT SANITATION ENGINEER  
 APPROVED BY: [Signature] OFFICE ENGINEER  
 SUBMITTED BY: [Signature] SPECIAL ENGINEER  
 CHECKED BY: [Signature] REG. C.E. NO. 104523

COLLECT CHARGES AS INDICATED  
 Kenneth Weiser 1-8-66

NO CONNECTIONS FOR THE DISPOSAL OF INDUSTRIAL WASTES SHALL BE MADE TO SEWERS SHOWN ON THESE DRAWINGS WITHOUT WRITTEN PERMISSION FROM THE CHIEF ENGINEER AND GENERAL MANAGER OF THE COUNTY SANITATION DISTRICTS.

J.N. 0366.15



P.C. 7427 PAGE 2  
 DOUBLE SCALE  
 NO CHARGE FOR CONNECTIONS  
 38576



DOUBLE SCALE  
NO CHARGE FOR  
CONNECTIONS

38577

