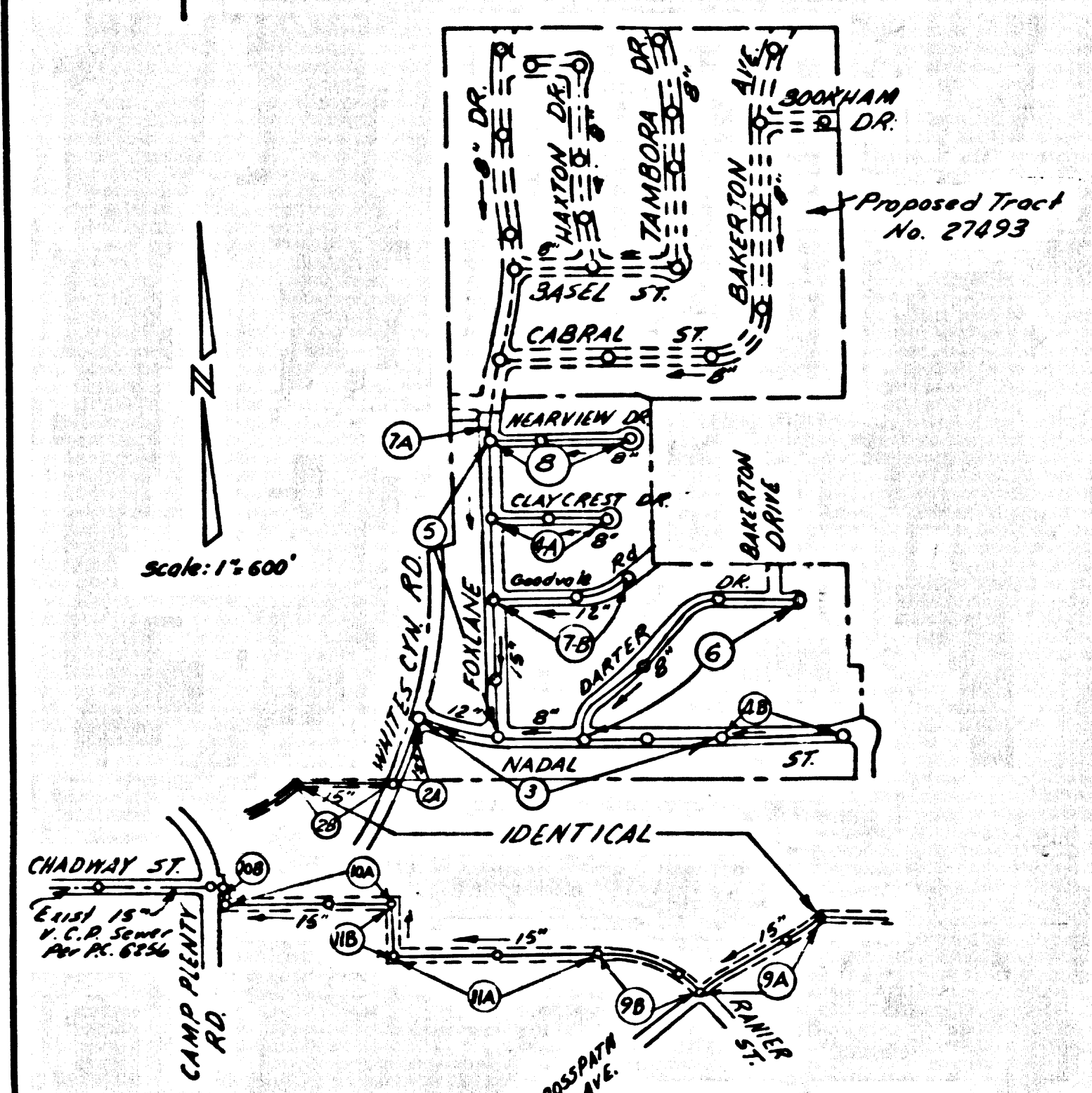


B.M. S.L. 1729 ELEV. 1356.859
 L.S. Top 2632 in West Curb 5' South
 of B.C.R. at S.W. Cor. of Whittier
 Rd. and Adams St. S.S. South and
 90° West of Intersection.
 NEWHALL QUAD. 19 53



INDEX MAP
 P.C. 7431 R
 TRACT NO. 28043

PRIVATE ENGINEER'S NOTICE TO CONTRACTORS
 THE EXISTENCE AND LOCATION OF ANY UNDERGROUND UTILITY OR STRUCTURE SHOWN ON THESE PLANS ARE OBTAINED BY A SEARCH OF THE AVAILABLE RECORDS TO THE BEST OF OUR KNOWLEDGE THERE ARE NO EXISTING UTILITIES EXCEPT AS SHOWN ON THIS MAP
 THE CONTRACTOR IS REQUIRED TO TAKE DUE PRECAUTIONARY MEASURES TO PROTECT THE UTILITY LINES SHOWN, AND ANY OTHER LINES NOT OF RECORD OR NOT SHOWN ON THIS DRAWING.
E. S. Holden, Jr.
 R.C.E. 10533

REVISED:
 1. CHANGE LOT NUMBERS, DIMENSIONS, TRACT NUMBER, AND STORM DRAIN ALIGNMENT.
 2. CHANGE GRADE BETWEEN STA. 3+00 AND 0+89.12 ON PAGE 5.
 3. ELIMINATE PAGES FOR TRACT NO. 27493 AND RENUMBER PAGES.
 4. CHANGE WIDTH OF EASEMENT SHOWN ON PAGES 2B&11B.
 APPROVED: *Ralph Schaper* DATE: 6/15/66

REVISED:
 1. REMOVE BAKERTON AVE. AS SHOWN ON PAGE 8-B.
 2. REMOVE BAKERTON AVE. & M.H. AT STA. 14+30.40 & ADJUST GRADE BETWEEN STA. 11+65.00 & 14+75.00 ON PAGE 4-B.
 3. CORRECT LOT NUMBERS & DIMENSIONS ON PAGES 4-B & 3.
 APPROVED: *Ralph Schaper* DATE: 9/15/66

REVISED:
 1. REVISED LOT LINES ON PAGES 2B, 9A, 9B, 11A & 11B.
 2. ADJUST HOUSE LATERALS TO NEW LOT LINES ON PAGES 9A, 9B & 11A.
 APPROVED: *Ralph Schaper* DATE: 1/31/67

REVISED:
 1. REMOVE ALL HOUSE LATERALS ON PAGES 9A, 9B & 11A
 APPROVED: *Ralph Schaper* DATE: 1/22/68

NEWHALL BLDG. DIST. NO. 8.2

- NOTE:
- PROVIDE STAKES ON THE PROPERTY LINE OR PROPERTY LINES PRODUCED AT RIGHT ANGLES TO THE SEWER LINE AT THE CENTER LINE OF EACH MANHOLE.
 - NO REPRESENTATIVE OF THE COUNTY ENGINEER WILL SURVEY OR LAY OUT ANY PORTION OF THE WORK.
 - THE PRIVATE ENGINEER SHALL FURNISH THE COUNTY ENGINEER WITH GRADE SHEETS AND STATIONING FOR ALL HOUSE LATERALS AND T-BRANCHES AND SHALL PROVIDE STAKES FOR THEM AT THEIR PROPER LOCATIONS WITH STATIONING PLAINLY MARKED. ALL HOUSE LATERALS SHALL BE CONSTRUCTED IN A STRAIGHT ALIGNMENT AT RIGHT ANGLES FROM THE MAIN LINE SEWER EXCEPT AS SHOWN ON THE PLANS. HOUSE LATERALS FROM CHIMNEYS SHALL BE CONSTRUCTED AT RIGHT ANGLES TO THE MAIN LINE SEWER. ANY CHANGE IN ALIGNMENT SHALL BE REQUESTED IN WRITING BY THE PRIVATE ENGINEER.
 - THE PRIVATE ENGINEER SHALL FURNISH THE HOUSE LATERAL DEPTH AT THE PROPERTY LINE BELOW THE TOP OF CURB ELEVATION FOR EACH HOUSE LATERAL ON THE GRADE SHEET.
 - NO REVISIONS SHALL BE MADE IN THESE PLANS WITHOUT THE APPROVAL OF THE COUNTY ENGINEER.
 - THE CONTRACTOR SHALL NOTIFY THE CONSTRUCTION DIVISION BY TELEPHONE, HAZARDON 9-6747, EXT. 8134, AT LEAST TWENTY-FOUR HOURS BEFORE STARTING ANY WORK UNDER THIS CONTRACT.
 - MANHOLES SHALL BE BRICK SEWER STRUCTURES PER S-2 PRECAST CONCRETE MANHOLES PER S-5 OR S-6 MAY BE USED AS AN ALTERNATE IN LOCATIONS APPROVED BY THE COUNTY ENGINEER.
 - USE STANDARD MANHOLE FRAMES AND COVERS, S-15, EXCEPT AS NOTED.
 - MANHOLE TOPS IN UNIMPROVED RIGHTS-OF-WAY TO BE SIX INCHES ABOVE FINISHED GRADE.
 - USE EXTRA STRENGTH PIPE. ALL PIPE IS STANDARD DEPTH EXCEPT AS NOTED.
 - USE CHEMIST REGISTER OR MECHANICAL COMPRESSION JOINTS FOR ALL V.C.P. JOINTS PER SPEC., SECT. 34 & 44.
 - WHERE EVER CHIMNEY WATER IS INDICATED DURING THE CONSTRUCTION OF THE SEWER, THE V.C.P. JOINTS SHALL BE OF JOINT COMPOUND PER SPEC., SECT. 34 & 44, OR MECHANICAL COMPRESSION JOINTS PER SPEC. 34 & 44.
 - IF A POWER POLE IS WITHIN THREE FEET OF THE SEWER, THE SEWER SHALL BE ENCASED, PER S-23 - CAN BE TWO FEET ON EACH SIDE FROM THE POINT OF INTERFERENCE.
 - IF DURING THE COURSE OF CONSTRUCTION IT IS DETERMINED THAT THERE IS LESS THAN FOUR FEET OF COVER OVER THE TOP OF A MAIN LINE OR HOUSE LATERAL V.C.P. SEWER WHICH IS NOT INDICATED ON THE PLANS, THE PIPE SHALL BE ENCASED PER S-23, CASE III, UNLESS OTHERWISE APPROVED BY THE COUNTY ENGINEER.
 - HOUSE LATERALS TO BE CONSTRUCTED WITH INVERTS AT PROPERTY LINE, ... FEET BELOW CURB GRADE EXCEPT AS NOTED.
 - RESURFACE ALL DRIVEWAYS WITHIN PAVED AREAS TO MEET L.A. COUNTY ROAD DEPT. OR CALIFORNIA HIGHWAY REQUIREMENTS IN ACCORDANCE WITH PERMITS.
 - FOR ALLOWANCE MESSAGE TEST USE FORM NO. ... SPEC., SEC. 54.
 - ALL STATE AND LOCAL TRUCK SAFETY ORDERS WILL BE RIGIDLY ENFORCED.
 - SEWER PIPE LENGTHS SHALL NOT EXCEED 1/2 MI. WHERE SEWER CENTERLINE RADIUS IS 150 FEET OR LESS.
 - A. NO CONSTRUCTION WILL BE PERMITTED IN FILLED AREAS UNLESS ACCEPTABLE CERTIFICATION IS SUBMITTED TO THE CONSTRUCTION DIVISION OF THE COUNTY ENGINEER'S DEPARTMENT THAT RELATIVE COMPACTION IS GREATER THAN 90%.
 B. IF COMPACTION IS LESS THAN 90% THE SEWER MUST BE CRAWLED AS SHOWN ON THESE PLANS PER S-23.
 C. IF COMPACTION IS GREATER THAN 90% SPECIAL CRADINGS AND MANHOLE BASES PER S-24 WILL NOT BE REQUIRED.

COLLECT CHARGES AS INDICATED
R. A. Jones

NO CONNECTIONS FOR THE DISPOSAL OF INDUSTRIAL WASTES SHALL BE MADE TO SEWERS SHOWN ON THESE DRAWINGS WITHOUT WRITTEN PERMISSION FROM THE CHIEF ENGINEER AND GENERAL MANAGER OF THE COUNTY SANITATION DISTRICTS.

PROFILE ALIGNMENT AND GRADE OF
 SANITARY SEWERS PAGE 1
 TO BE CONSTRUCTED IN

TRACT NO. 28043
 PRIVATE CONTRACT NO. 7431 R

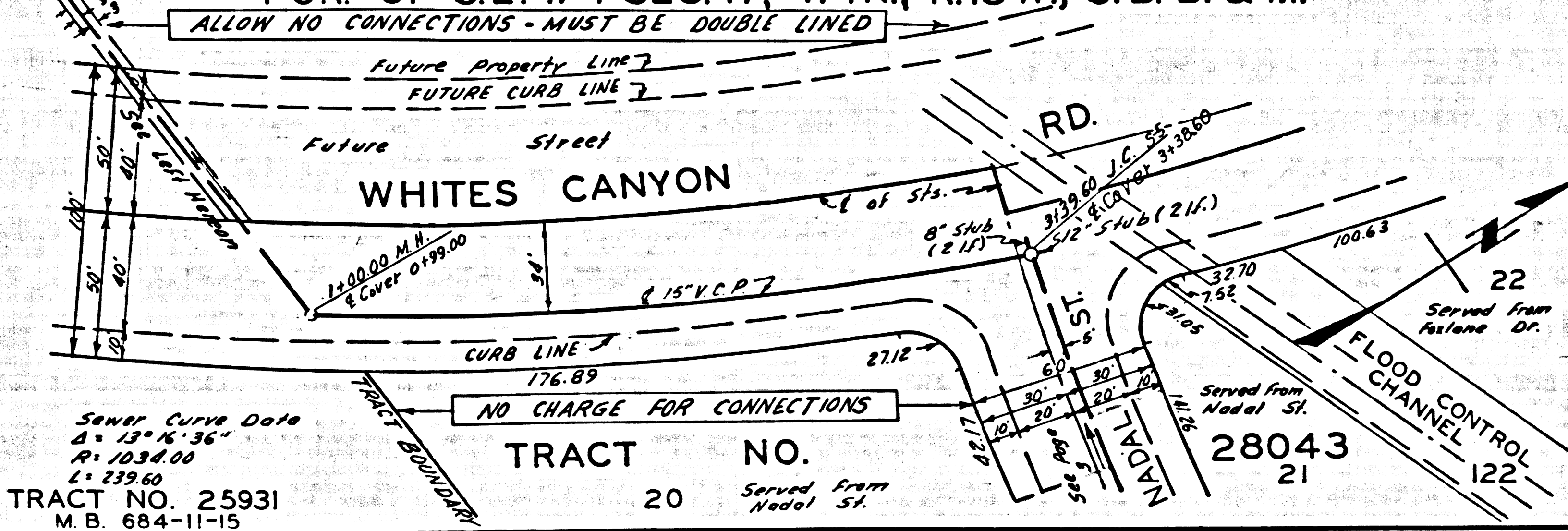
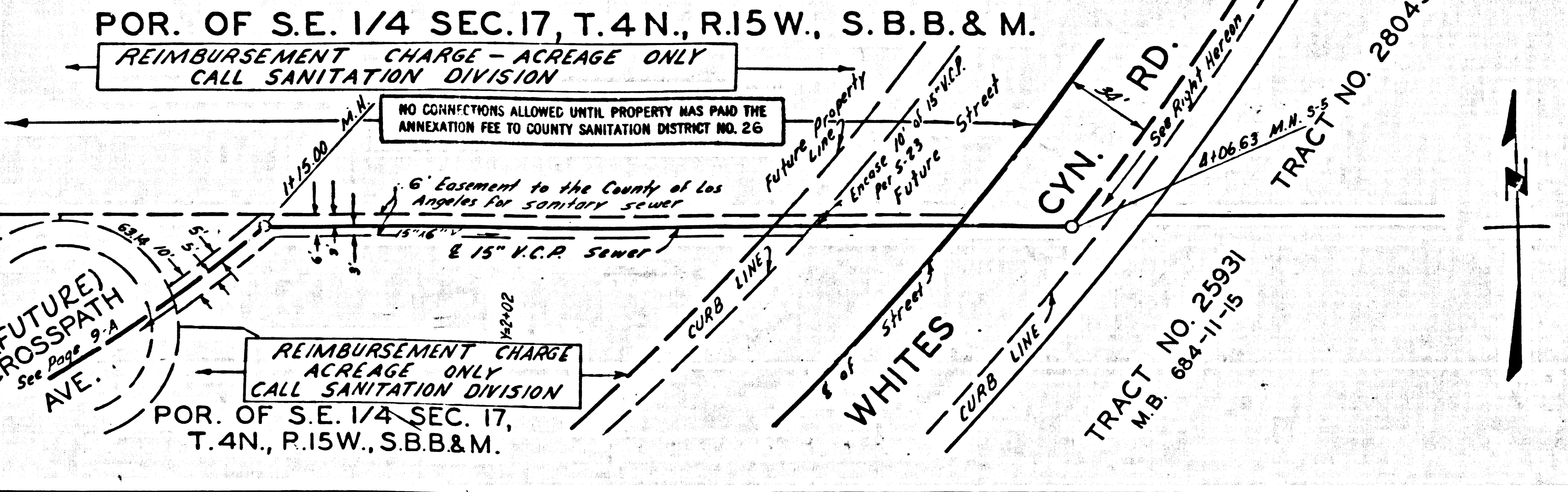
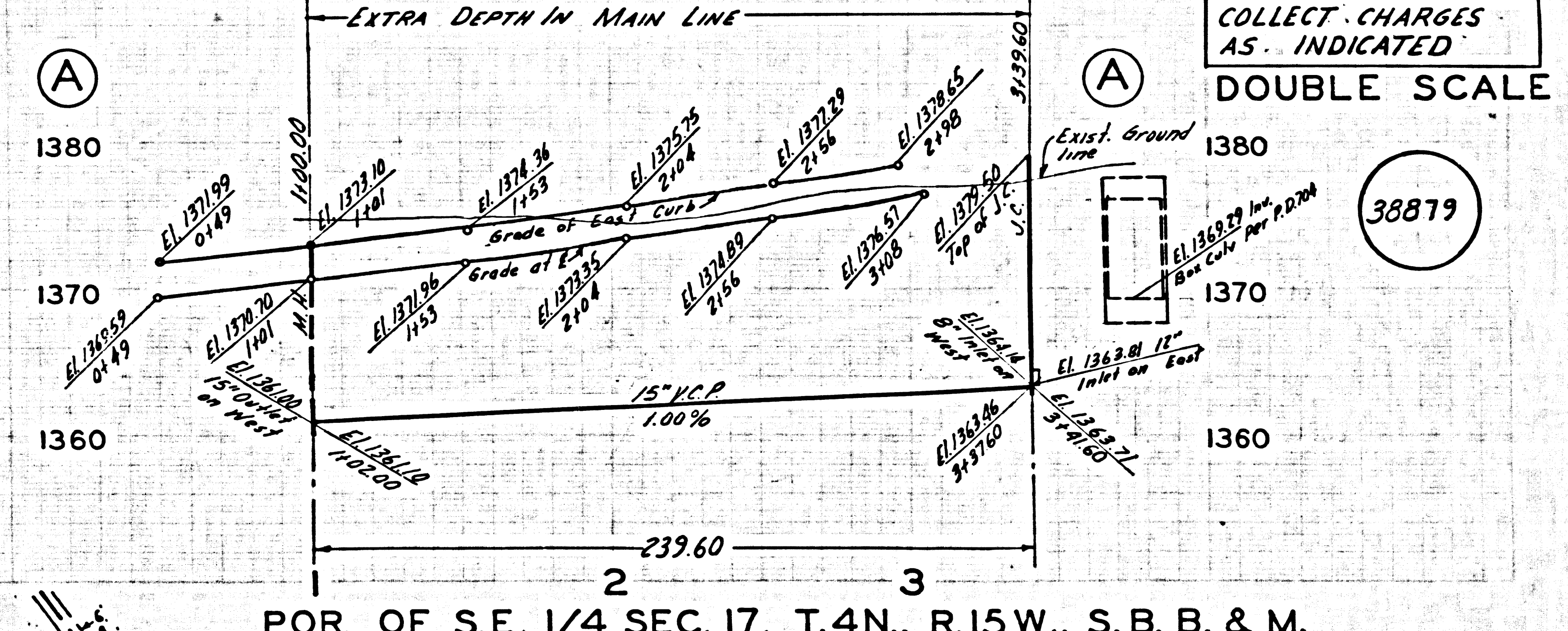
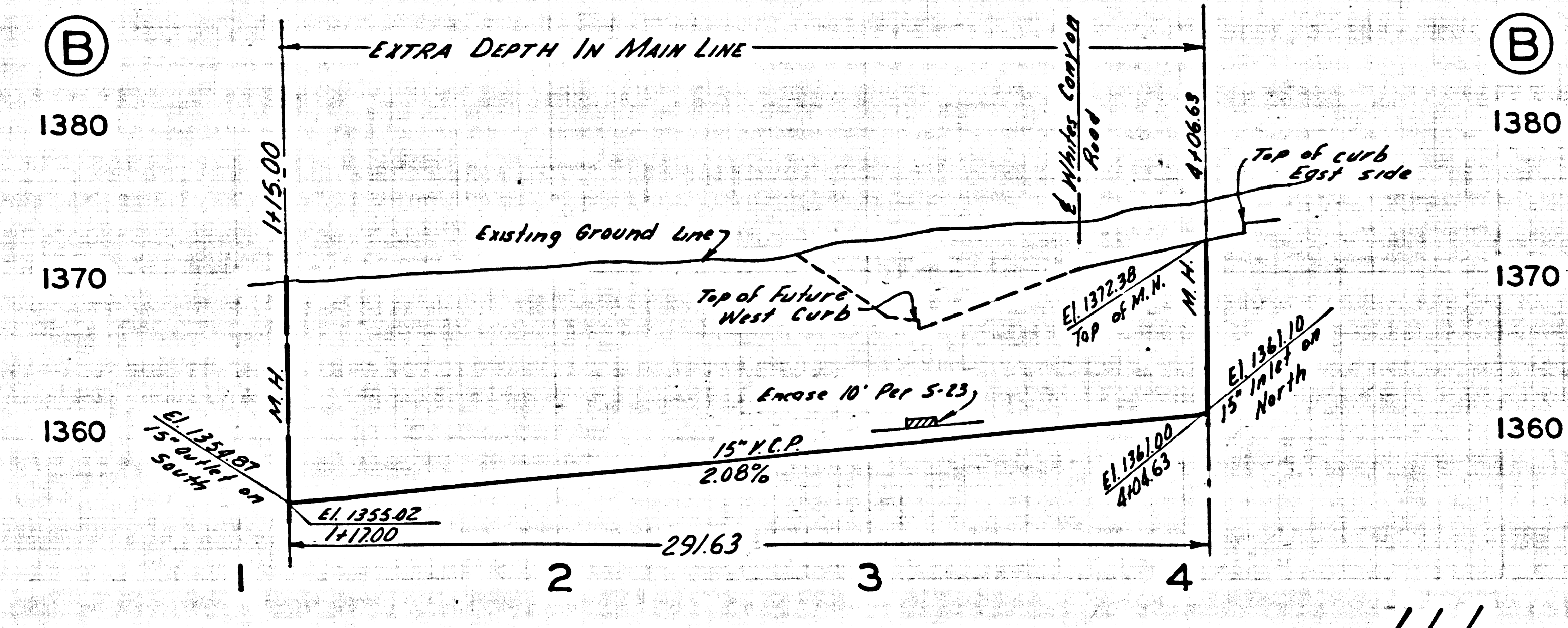
W.S. 62
 6 SHEETS, 11 PAGES
 SCALE: HORIZ. 1" = 100' VERT. 1" = 10'
 PREPARED IN THE OFFICES OF
ANDEL ENGINEERING CO.
E. S. Holden, Jr.
 REG. C. E. NO. 10533

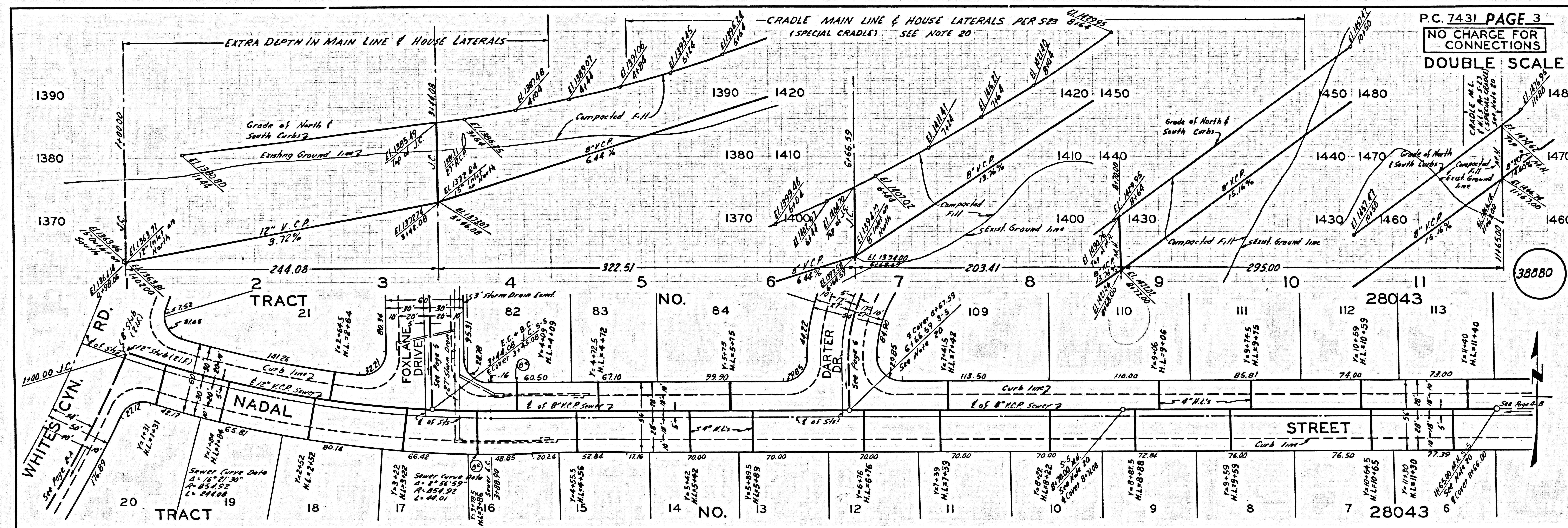
FOR LEGEND SEE PLAN NO. S-1

NOTE:
 GRADES TO WHICH THIS IMPROVEMENT IS TO BE CONSTRUCTED ARE SHOWN ON PLANS AND PROFILES. GRADE POINTS FOR TOP OF CURBS, CENTER LINE OF STREETS, OR CENTER LINE OF ALLEYS ARE SHOWN BY CIRCLES ON PROFILES. AT ALL POINTS BETWEEN DESIGNATED POINTS THE GRADE SHALL BE ESTABLISHED SO AS TO CONFORM TO A STRAIGHT LINE DRAWN BETWEEN SAID DESIGNATED POINTS. ELEVATIONS ARE IN FEET ABOVE U.S.C. & G.S. SEA LEVEL DATUM OF 1929.
 THE DRAWING AND THE DATA HEREON ARE HEREBY MADE A PART OF THE SPECIFICATIONS. ALL REVISIONS TO THESE DRAWINGS SHALL BE CONSTRUCTED ACCORDING TO STANDARD SPECIFICATIONS DATED MAY 22, 1962, ON FILE IN THE OFFICE OF THE COUNTY ENGINEER AND SHALL BE PROCURED ONLY IN THE PRESENCE OF THE COUNTY ENGINEER.
 BEFORE WORK CAN BE STARTED, THE CONTRACTOR MUST OBTAIN A PERMIT TO EXCAVATE IN COUNTY STREETS FROM THE L.A. COUNTY ROAD DEPT., DISTRICT OFFICE AND PAY TO THE COUNTY ENGINEER, ROOM 280, COUNTY ENGINEER'S BUILDING, 120 WEST SECOND STREET OR "APPROPRIATE" LOCAL REGIONAL OFFICE, SUFFICIENT TO COVER THE COST OF CONSTRUCTION INSPECTION AND RECORD DRAWINGS.
 APPROVAL OF THIS PLAN BY THE COUNTY OF LOS ANGELES DOES NOT CONSTITUTE A REPRESENTATION AS TO THE ACCURACY OF THE LOCATION OF OR THE EXISTENCE OR NON-EXISTENCE OF ANY UNDERGROUND UTILITY PIPE, OR STRUCTURE WITHIN THE LIMITS OF THIS PROJECT. THIS NOTE APPLIES TO ALL PAGES.
 IF WORK IS TO BE DONE ON A HIGHWAY, A PERMIT MUST BE OBTAINED FROM THE STATE OF CALIFORNIA, DIVISION OF HIGHWAYS, 120 SOUTH SPRING STREET, LOS ANGELES, CALIFORNIA.

COUNTY OF LOS ANGELES, CALIFORNIA
 JOHN A. LAMBIE, COUNTY ENGINEER J. D. PARKHURST, CHIEF ENGINEER
 APPROVED BY: *Ralph Schaper* ASSISTANT SANITATION ENGINEER APPROVED BY: *J. D. Parkhurst* OFFICE ENGINEER

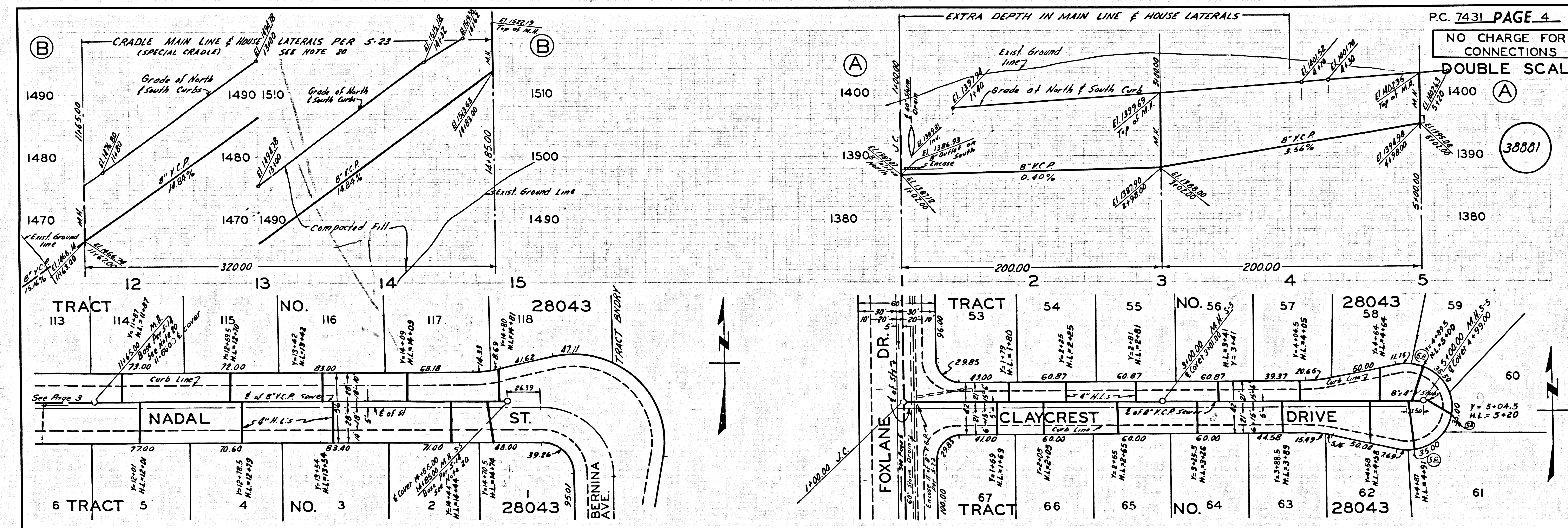
CHECKED BY: *Ralph Schaper* 5/11/66
 REG. C. E. NO. 13266
 J. N. 0366.18





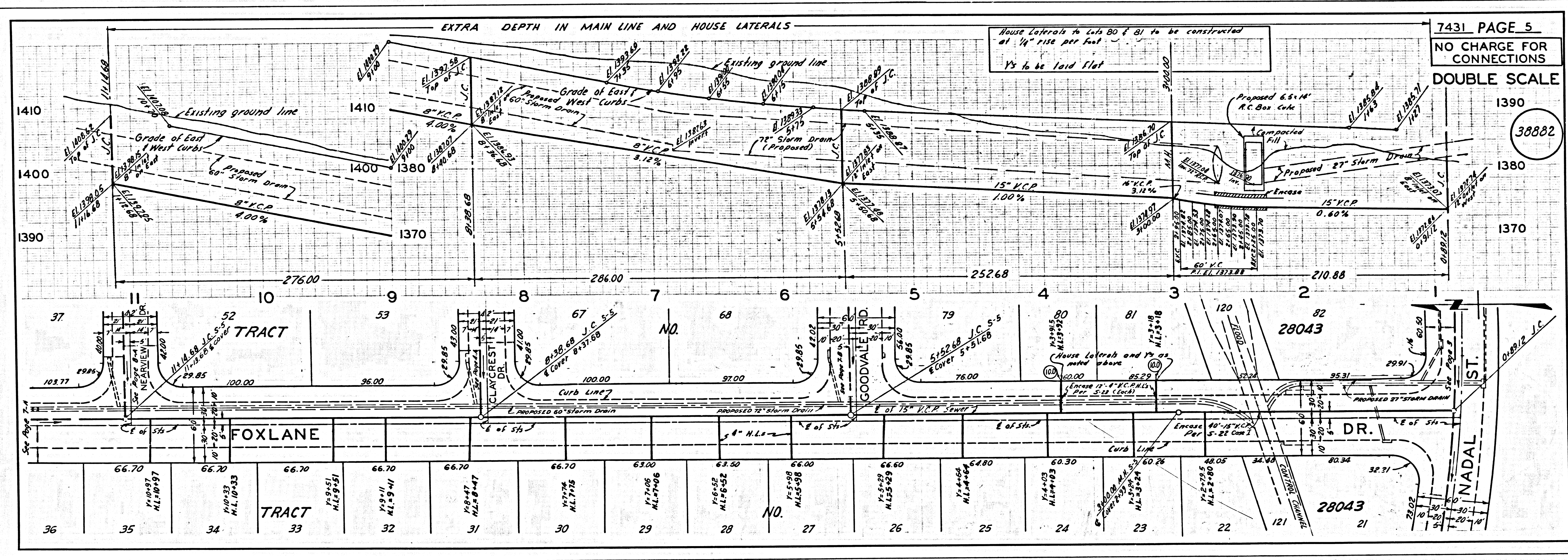
P.C. 7431 PAGE 3
 NO CHARGE FOR CONNECTIONS
 DOUBLE SCALE

38880



P.C. 7431 PAGE 4
 NO CHARGE FOR CONNECTIONS
 DOUBLE SCALE

38881

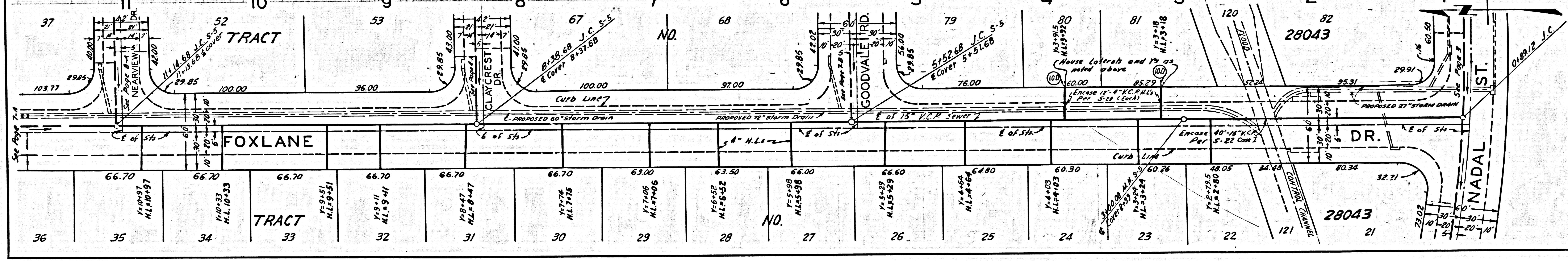


EXTRA DEPTH IN MAIN LINE AND HOUSE LATERALS

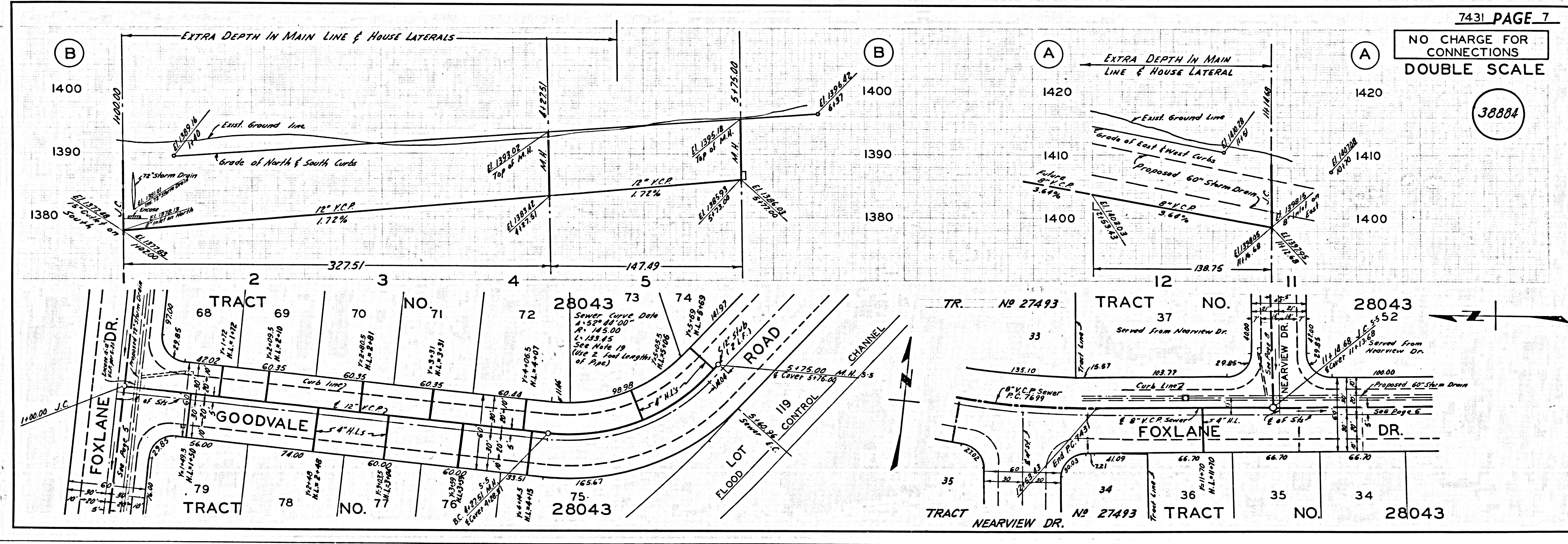
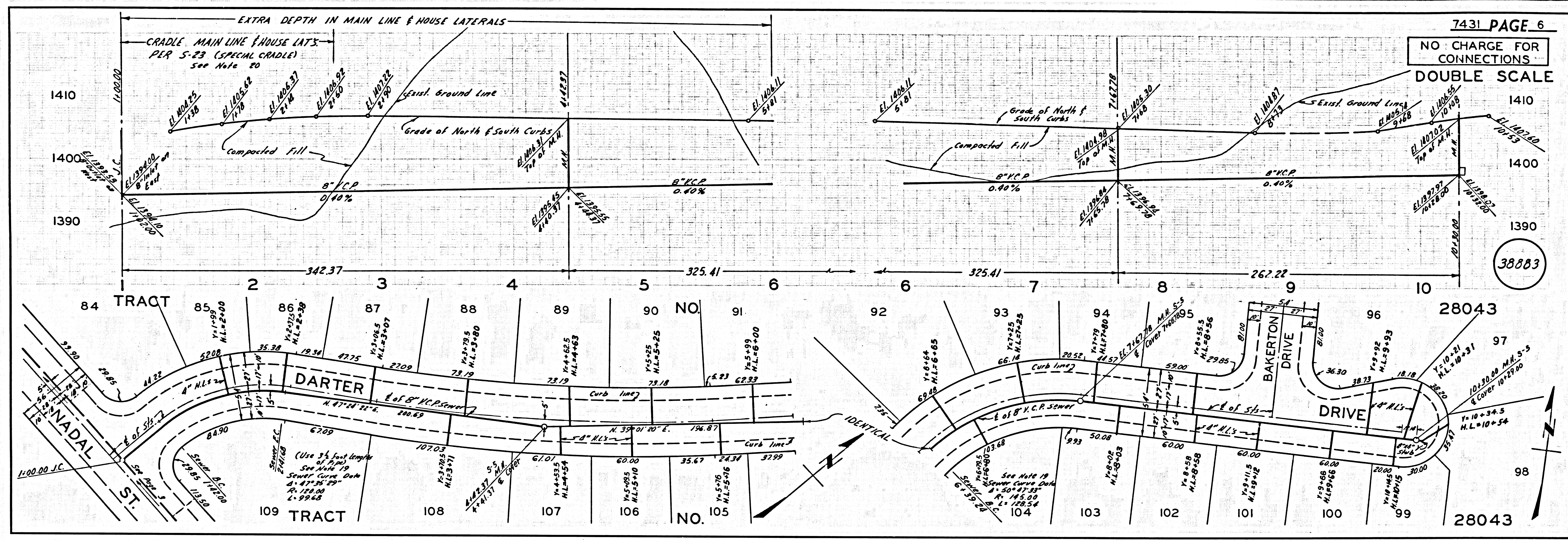
House laterals to lots 80 & 81 to be constructed at 1/4" rise per foot. Ys to be laid flat

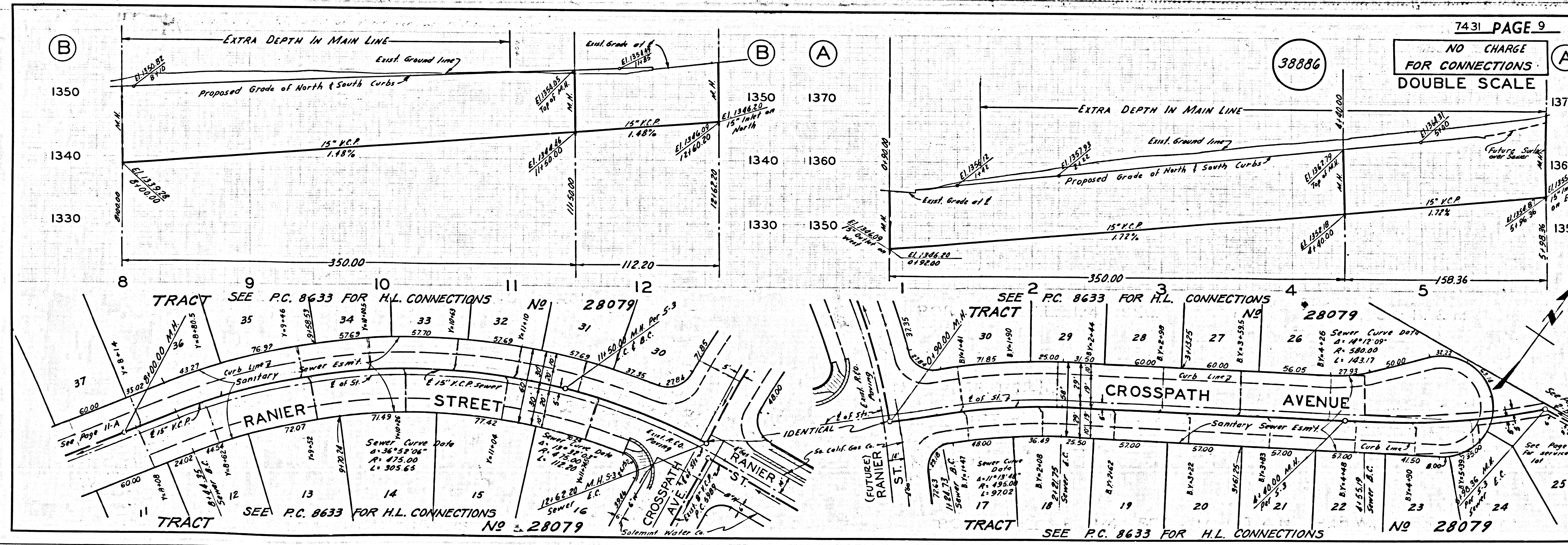
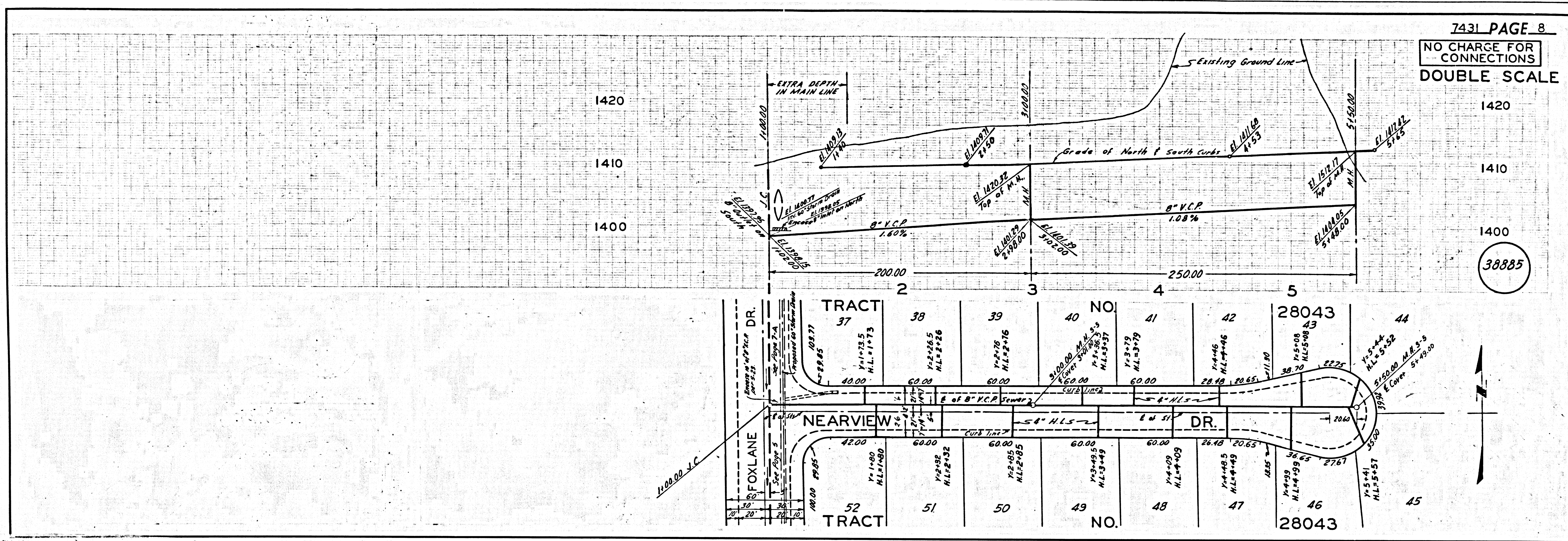
7431 PAGE 5
NO CHARGE FOR CONNECTIONS
DOUBLE SCALE

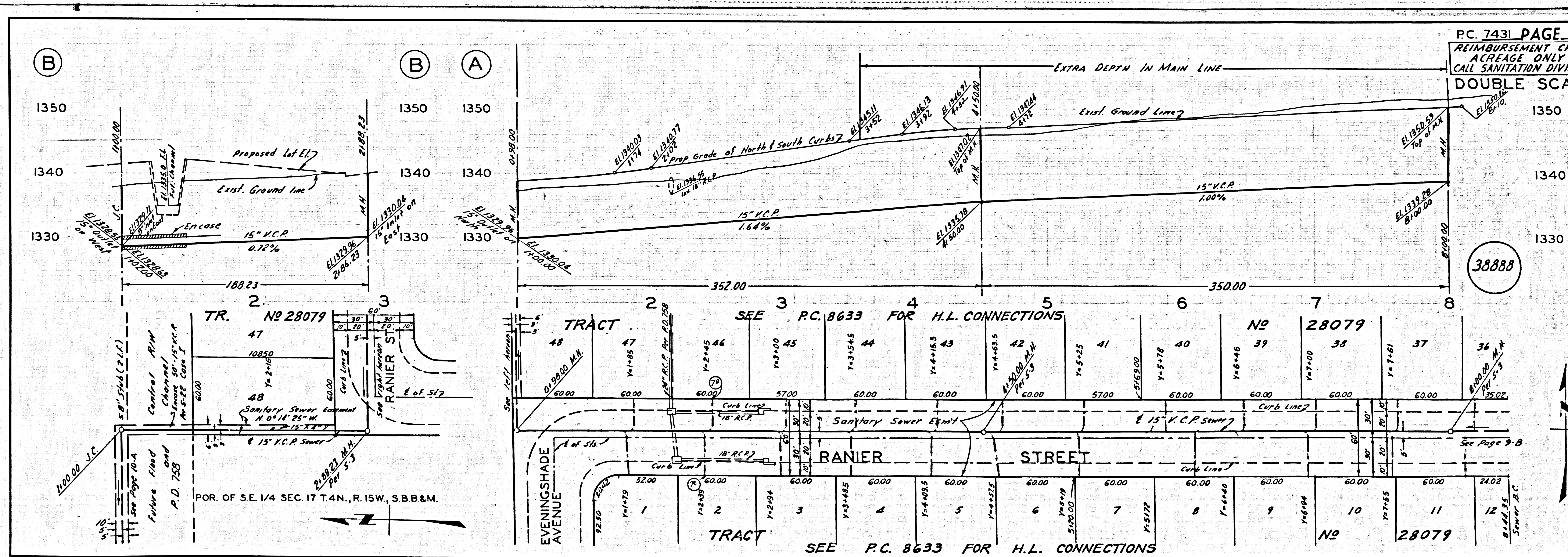
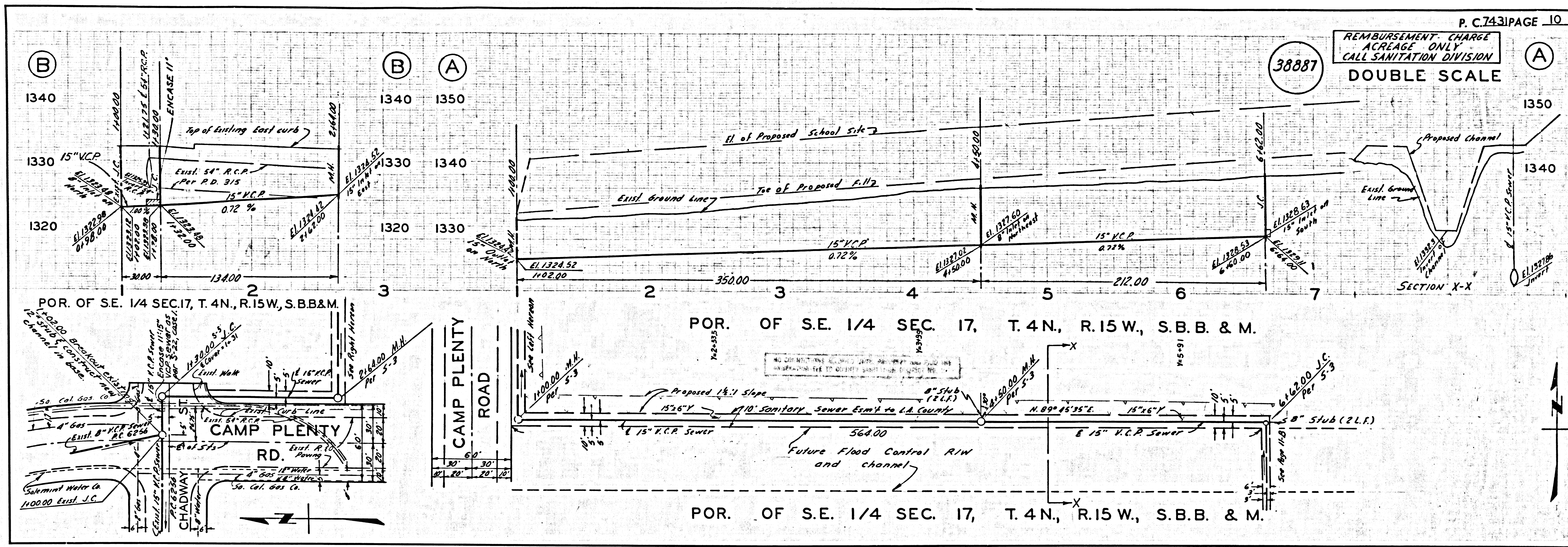
38882



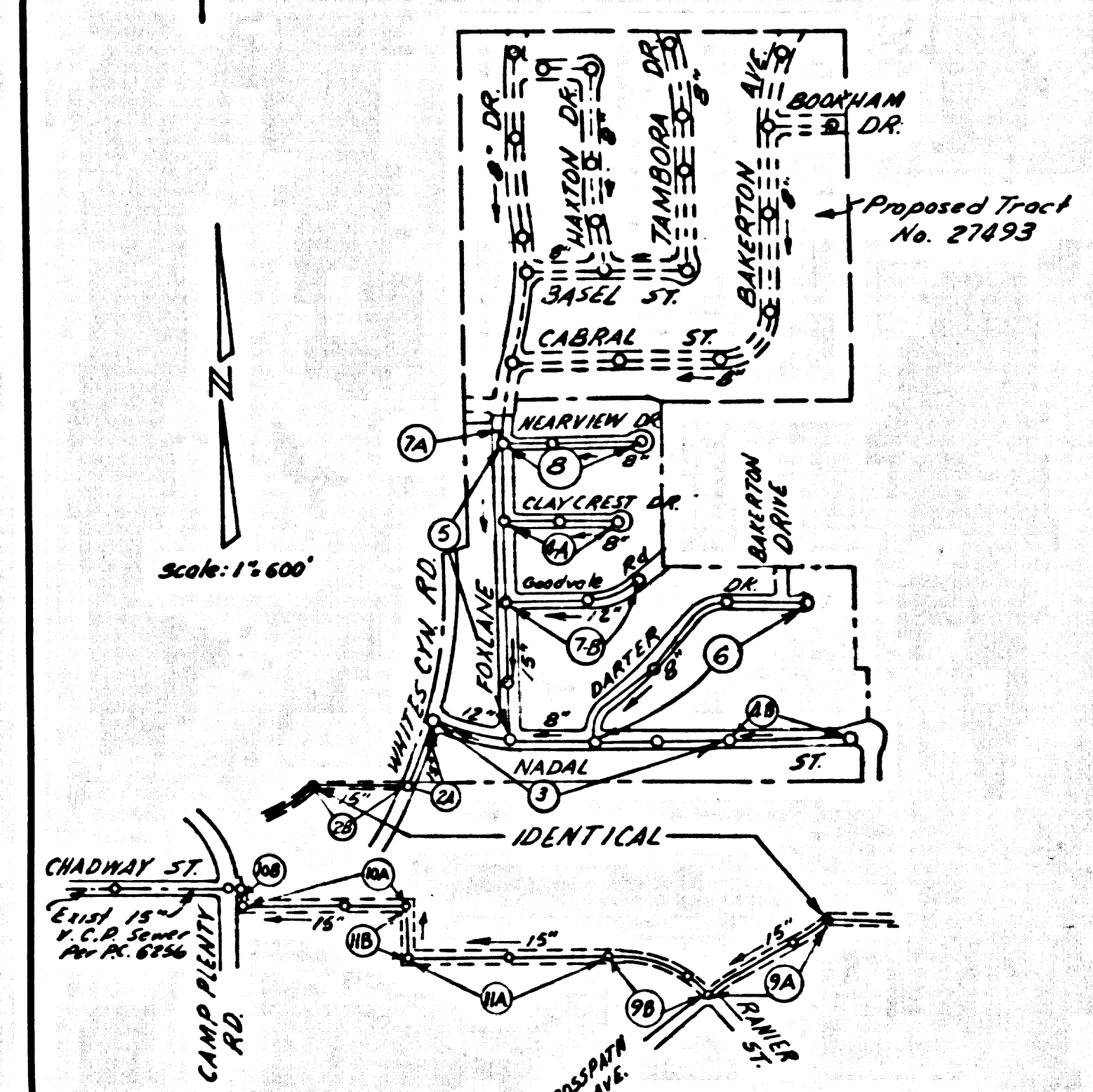
BC 1733







B.M. S.L. 1729 ELEV. 1356.859
 L.S. Top 2602 in West Curb 5' South
 of B.C.R. of S.W. Cor. of Whites Can
 Rd. over Rogers St. 55' South and
 60' West of Intersection
 NEWHALL QUAD. 19 58



INDEX MAP
 P.C. 7431 R.
 TRACT NO. 28043

PRIVATE ENGINEERS NOTICE TO CONTRACTORS
 THE EXISTENCE AND LOCATION OF ANY UNDERGROUND UTILITY
 OR STRUCTURE SHOWN ON THESE PLANS ARE OBTAINED BY A
 SEARCH OF THE AVAILABLE RECORDS TO THE BEST OF OUR
 KNOWLEDGE THERE ARE NO EXISTING UTILITIES EXCEPT AS
 SHOWN ON THIS MAP.
 THE CONTRACTOR IS REQUIRED TO TAKE DUE PRECAUTIONARY
 MEASURES TO PROTECT THE UTILITY LINES SHOWN, AND
 ANY OTHER LINES NOT OF RECORD OR NOT SHOWN ON THIS
 DRAWING.

E. S. Holden, Jr.
 R.C.E. 10533

REVISED:
 1. CHANGE LOT NUMBERS, DIMENSIONS, TRACT NUMBER, AND STORM
 DRAIN ALIGNMENT.
 2. CHANGE GRADE BETWEEN STA. 3+00 AND 0+89.12 ON PAGE 5.
 3. ELIMINATE PAGES FOR TRACT NO. 27493 AND RENUMBER PAGES.
 4. CHANGE WIDTH OF EASEMENT SHOWN ON PAGES 2B&1B.
 APPROVED: *Ralph Schafar* DATE: 6/15/66

REVISED:
 1. REMOVE BAKERTON AVE. AS SHOWN ON PAGE 8-B.
 2. REMOVE BAKERTON AVE. & M.H. AT STA. 14+30.40 & ADJUST
 GRADE BETWEEN STA. 11+65.00 & 14+75.00 ON PAGE 4-B.
 3. CORRECT LOT NUMBERS & DIMENSIONS ON PAGES 4-B & 3.
 APPROVED: *Ralph Schafar* DATE: 9/15/66

REVISED:
 1. REVISED LOT LINES ON PAGES 2B, 9A, 9B, 11A & 11B.
 2. ADJUST HOUSE LATERALS TO NEW LOT LINES ON
 PAGES 9A, 9B & 11A.
 APPROVED: *Ralph Schafar* DATE: 1/31/68

REVISED:
 1. REMOVE ALL HOUSE LATERALS ON PAGES 9A, 9B & 11A.
 APPROVED: *Ralph Schafar* DATE: 1/22/68

NEWHALL BLDG. DIST. NO. 8.2

- NOTE:
 1. PROFILE STAKES ON THE PROPERTY LINE OR PROPERTY LINES PRODUCED AT RIGHT ANGLES TO THE SEWER LINE AT THE CENTER LINE OF EACH MANHOLE.
 2. NO REPRESENTATIVE OF THE COUNTY ENGINEER WILL SURVEY OR LAY OUT ANY PORTION OF THE WORK.
 3. THE PRIVATE ENGINEER SHALL FURNISH THE COUNTY ENGINEER WITH GRADE SHEETS AND STATIONING FOR ALL HOUSE LATERALS AND Y BRANCHES AND SHALL PROVIDE STAKES FOR THEM AT THEIR PROPER LOCATIONS WITH STATIONING PLAINLY MARKED. ALL HOUSE LATERALS SHALL BE CONSTRUCTED IN A STRAIGHT ALIGNMENT AT RIGHT ANGLES FROM THE MAIN LINE SEWER EXCEPT AS SHOWN ON THE PLANS. HOUSE LATERALS FROM CHIMNEYS SHALL BE CONSTRUCTED AT RIGHT ANGLES TO THE MAIN LINE SEWER. ANY CHANGE IN ALIGNMENT SHALL BE REQUESTED BY WRITING BY THE PRIVATE ENGINEER.
 4. THE PRIVATE ENGINEER SHALL FURNISH THE HOUSE LATERAL DEPTH AT THE PROPERTY LINE BELOW THE TOP OF CURB ELEVATION FOR EACH HOUSE LATERAL ON THE GRADE SHEET.
 5. NO REVISIONS SHALL BE MADE IN THESE PLANS WITHOUT THE APPROVAL OF THE COUNTY ENGINEER.
 6. THE CONTRACTOR SHALL NOTIFY THE CONSTRUCTION DIVISION BY TELEPHONE, MADISON 9-0747, EXT. 8151, AT LEAST TWENTY-FOUR HOURS BEFORE STARTING ANY WORK UNDER THIS CONTRACT.
 7. MANHOLES SHALL BE BRICK SEWER STRUCTURES PER S-7. PRECAST CONCRETE MANHOLES PER S-5 OR S-6 MAY BE USED AS AN ALTERNATE IN LOCATIONS APPROVED BY THE COUNTY ENGINEER.
 8. THE STANDARD MANHOLE FRAMES AND COVERS, S-15, EXCEPT AS NOTED.
 9. MANHOLE TOPS IN UNIMPROVED ROADS OR WAYS TO BE BE SHOWN ABOVE FINISHED GRADE.
 10. USE EXTRA STRENGTH PIPE. ALL PIPE IS STANDARD DEPTH EXCEPT AS NOTED.
 11. USE COMBINE JOINTS OR MECHANICAL JOINTS FOR ALL Y.C.P. JOINTS PER SPECS. SECS. 54 & 48.
 12. WHERE SEWER GRADES WASTE IS UNCONFORMING DURING THE CONSTRUCTION OF THE SEWER, THE Y.C.P. JOINTS SHALL BE OF JOINT COMPENSOR PER SPECS. SECS. 54 & 48, OR MECHANICAL JOINTS PER SPECS. SECS. 54 & 48.
 13. IF A POWER POLE IS WITHIN THREE FEET OF THE SEWER, THE SEWER SHALL BE ENCASED, PER S-23 (CASE II), TWO FEET ON EACH SIDE FROM THE POINT OF INTERFERENCE.
 14. IF DURING THE COURSE OF CONSTRUCTION IT IS DETERMINED THAT THERE IS LESS THAN FOUR FEET OF COVER OVER THE TOP OF A MAIN LINE OR HOUSE LATERAL Y.C.P. IN WHICH IS NOT INDICATED ON THE PLANS, THE PIPE SHALL BE ENCASED PER S-23, CASE III, UNLESS OTHERWISE APPROVED BY THE COUNTY ENGINEER.
 15. HOUSE LATERALS TO BE CONSTRUCTED WITH INVERTS AT PROPERTY LINE... 6" FEET BELOW CURB GRADE EXCEPT AS NOTED.
 16. RESURFACE ALL TRENCHES WITHIN PAVED AREAS TO MEET L.A. COUNTY ROAD DEPT. OR CALIFORNIA STATE HIGHWAY REQUIREMENTS IN ACCORDANCE WITH PERMITS.
 17. FOR AUTOMOBILE EASEMENT SEE THE FORMULA NO. 100... SPECS. SEC. 54.
 18. ALL STATE AND LOCAL TRUCK TRAILER LOADS SHALL BE FULLY ENFORCED.
 19. SEWER PIPE LENGTHS SHALL NOT EXCEED 30' FEET WHERE SEWER CENTERLINE RADIUS IS 15' TO FEET OR LESS.
 20. A. NO CONSTRUCTION WILL BE PERMITTED IN FILLED AREAS UNLESS ACCEPTABLE CERTIFICATION IS SUBMITTED TO THE CONSTRUCTION DIVISION OF THE COUNTY ENGINEERS DEPARTMENT THAT RELATIVE COMPACTION IS GREATER THAN 80%.
 B. IF COMPACTION IS LESS THAN 80% THE SEWER MUST BE CRAWLED AS SHOWN ON THE PLANS PER S-23.
 C. IF COMPACTION IS GREATER THAN 80% SPECIAL CRADLING AND MANHOLE BASES PER S-23 WILL NOT BE REQUIRED.

COLLECT CHARGES AS INDICATED
Rena A. Jones

NO CONNECTIONS FOR THE DISPOSAL OF INDUSTRIAL WASTES SHALL BE MADE TO SEWERS SHOWN ON THESE DRAWINGS WITHOUT WRITTEN PERMISSION FROM THE CHIEF ENGINEER AND GENERAL MANAGER OF THE COUNTY SANITATION DISTRICTS.

PROFILE ALIGNMENT AND GRADE OF
 SANITARY SEWERS PAGE 1

TRACT NO. 28043
 PRIVATE CONTRACT NO. 7431 R

W.S. 62
 6 SHEETS, 11 PAGES

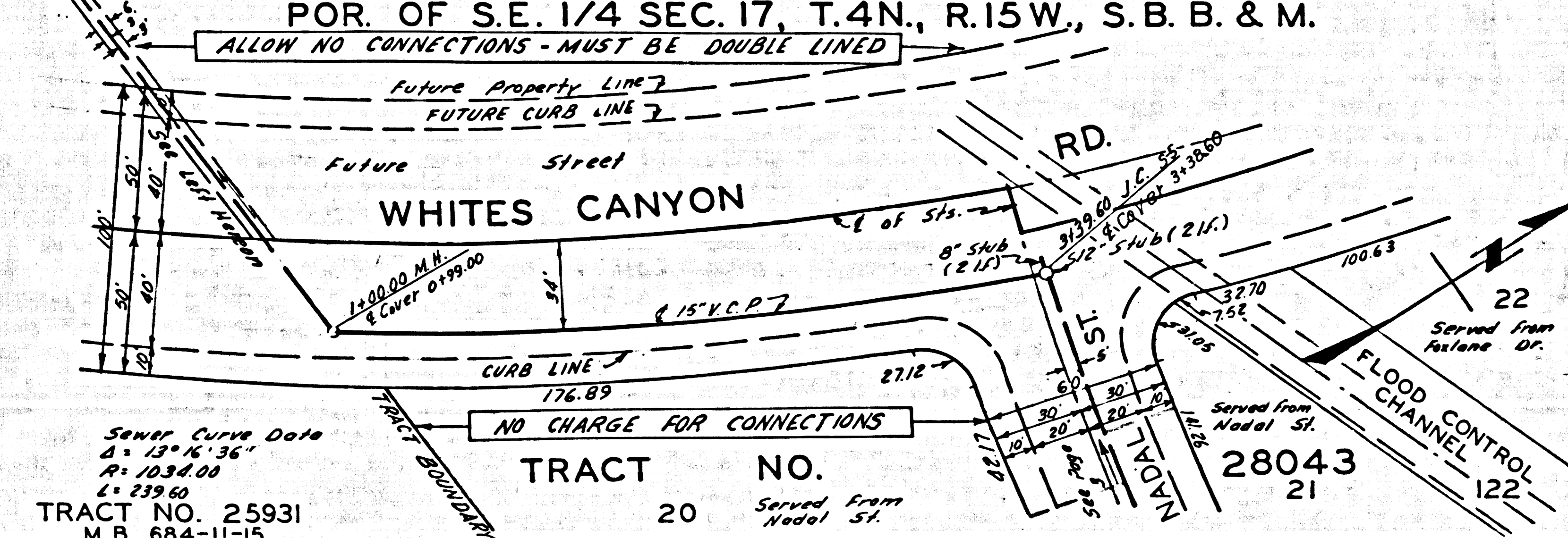
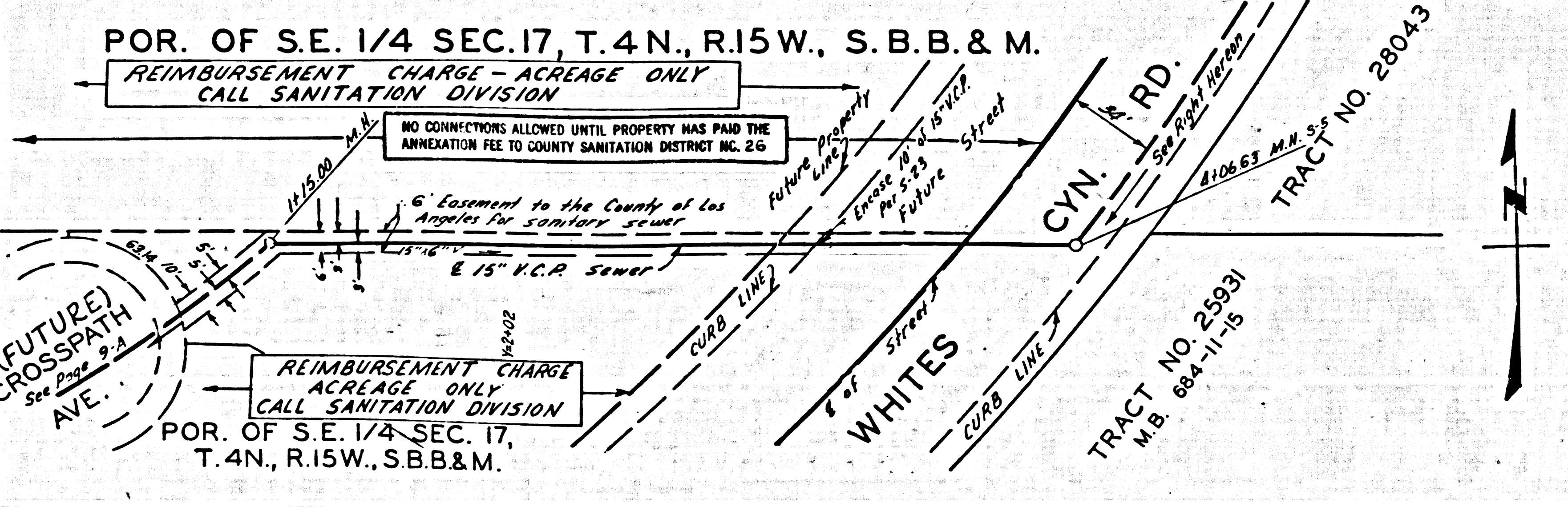
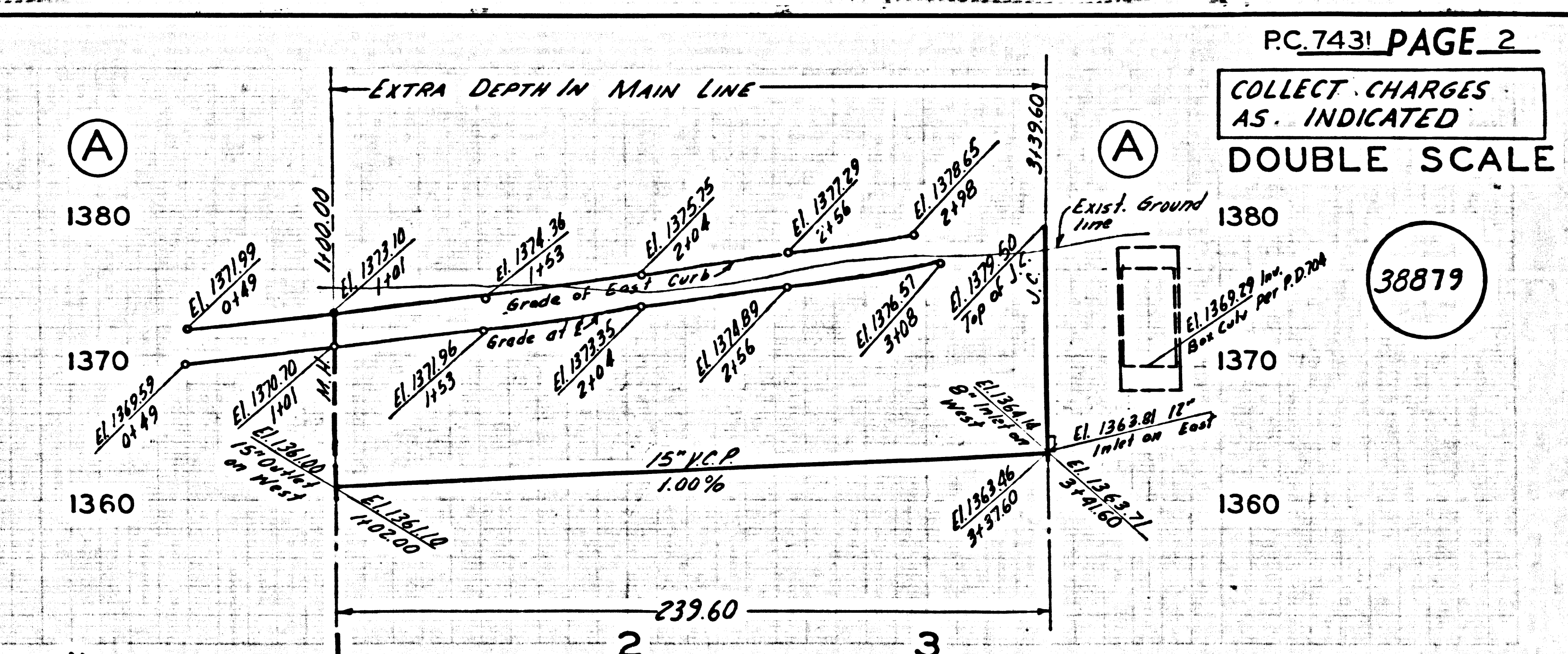
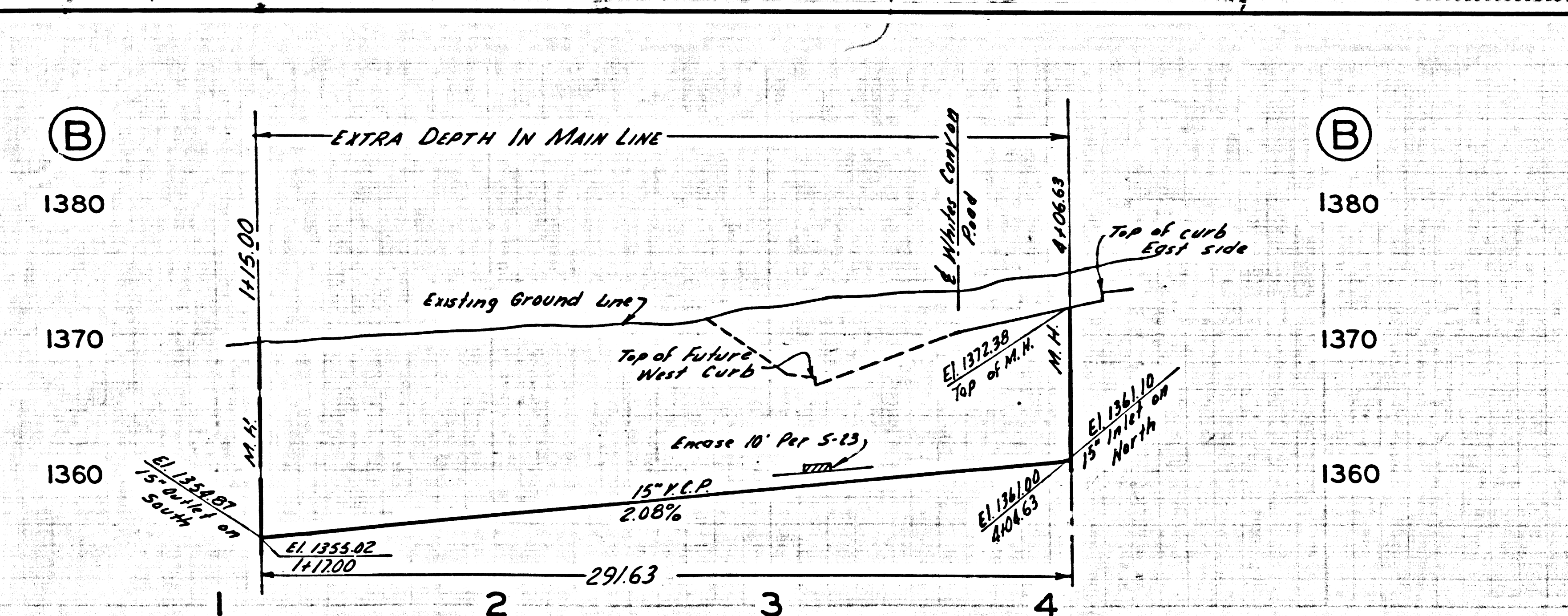
SCALE: VERT. 1"=4'
 HORIZ. 1"=40'
 MARCH, 1966
 PREPARED IN THE OFFICES OF
 ANDEL ENGINEERING CO.
 BY: *E. S. Holden, Jr.*
 REG. C.E. NO. 10533

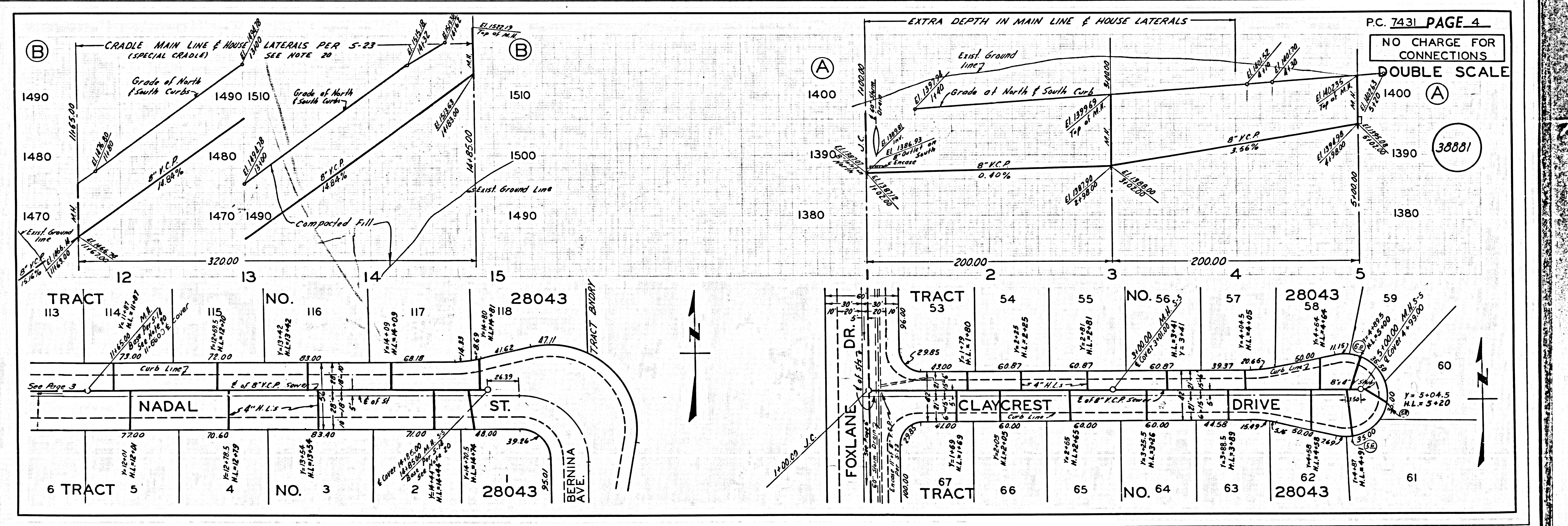
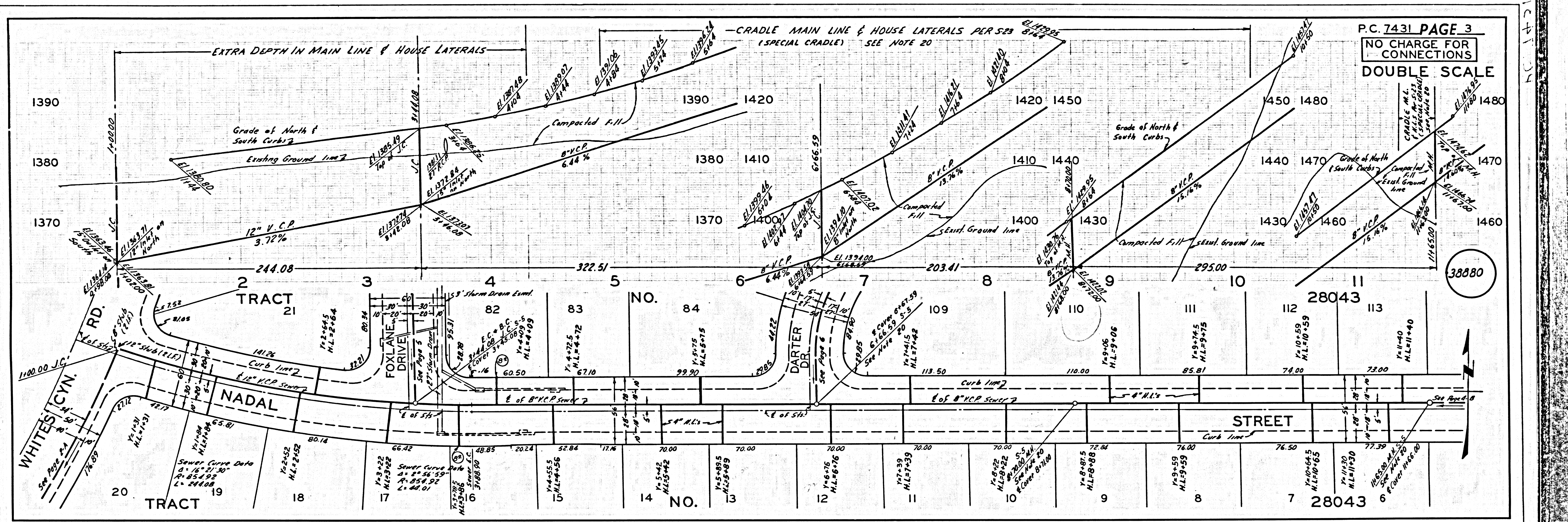
3887B

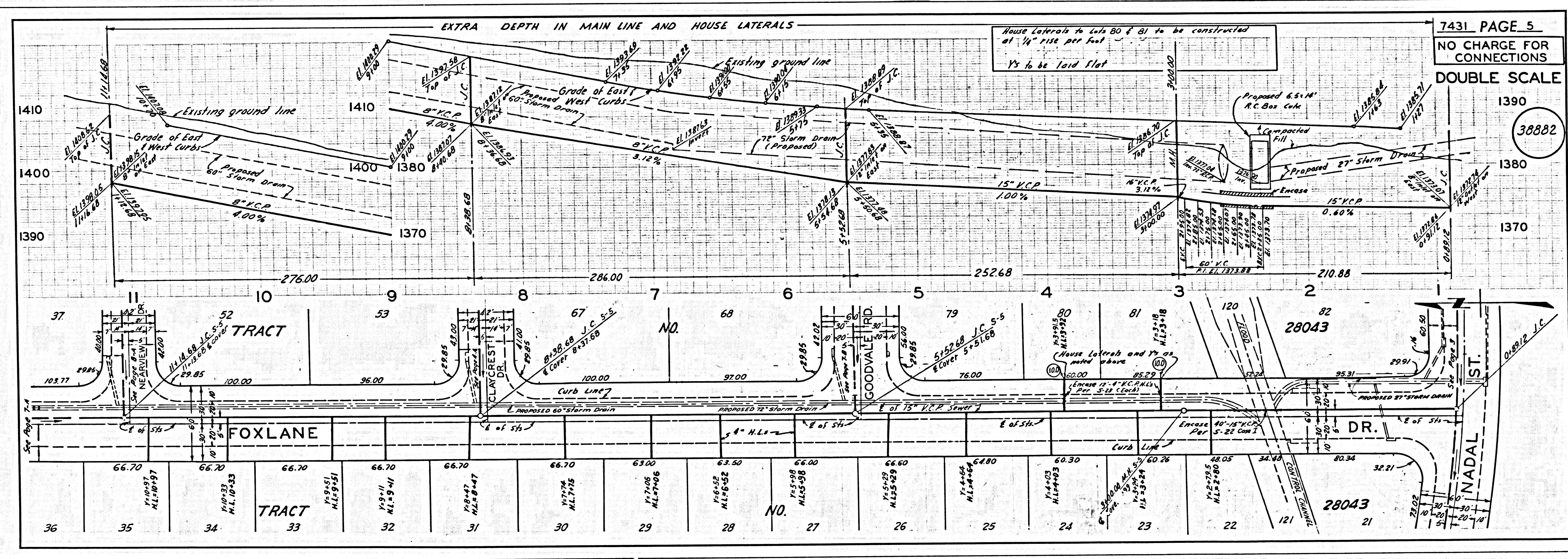
FOR LEGEND SEE PLAN NO. S-1
 NOTE:
 GRADES TO WHICH THIS IMPROVEMENT IS TO BE CONSTRUCTED ARE SHOWN ON PLANS AND PROFILES. GRADE POINTS FOR TOP OF CURB, CENTER LINE OF STREETS, OR CENTER LINE OF ALLEYS ARE SHOWN BY CIRCLES ON PROFILES. AT ALL POINTS BETWEEN DESIGNATED POINTS THE GRADE SHALL BE ESTABLISHED SO AS TO CONFORM TO A STRAIGHT LINE DRAWN BETWEEN SAID DESIGNATED POINTS. ELEVATIONS ARE IN FEET ABOVE U.S.C. & G.S. SEA LEVEL DATUM OF 1929.
 THIS DRAWING AND THE DATA HEREON ARE HEREBY MADE A PART OF THE SPECIFICATIONS. WORK SHALL BE CONSTRUCTED ACCORDING TO STANDARD SPECIFICATIONS DATED 12/21/56. AS REVISED. ON FILE IN THE OFFICE OF THE COUNTY ENGINEER AND SHALL BE PROSECUTED ONLY IN THE PRESENCE OF THE COUNTY ENGINEER. BEFORE WORK CAN BE STARTED, THE CONTRACTOR MUST OBTAIN A PERMIT TO EXCAVATE IN COUNTY STREETS FROM THE L.A. COUNTY ROAD DEPT., DISTRICT OFFICE NO. 1 AND PAY A FEE TO THE COUNTY ENGINEER, ROOM 303, COUNTY ENGINEERING BUILDING, ONE WEST SECOND STREET OR... REGIONAL OFFICE, SUFFICIENT TO COVER THE COST OF CONSTRUCTION INSPECTION AND RECORD PLANS.
 APPROVAL OF THIS PLAN BY THE COUNTY OF LOS ANGELES DOES NOT CONSTITUTE A REPRESENTATION AS TO THE ACCURACY OF THE LOCATION OF OR THE EXISTENCE OR NON-EXISTENCE OF ANY UNDERGROUND UTILITY PIPE, OR STRUCTURE, WITHIN THE LIMITS OF THIS PROJECT. THIS NOTE APPLIES TO ALL PAGES.
 IF WORK IS TO BE DONE ON A STATE HIGHWAY, A PERMIT MUST BE OBTAINED FROM THE STATE OF CALIFORNIA, DIVISION OF HIGHWAYS, 126 SOUTH SPRING STREET, LOS ANGELES, CALIFORNIA.

COUNTY OF LOS ANGELES, CALIFORNIA
 JOHN A. LAMBIE, COUNTY ENGINEER J. D. PARKHURST, CHIEF ENGINEER
 CO. SAN. DIST. NO. 8.2
 APPROVED BY: *Ralph Schafar* ASSISTANT SANITATION ENGINEER APPROVED BY: *J. D. Parkhurst* CHIEF ENGINEER

CHECKED BY: *Ralph Schafar* 5/14/66
 REG. C.E. NO. 13906
 J.N. 0366.18







EXTRA DEPTH IN MAIN LINE AND HOUSE LATERALS

House laterals to lots 80 & 81 to be constructed at 1/4" rise per foot Ys to be laid flat

7431 PAGE 5
NO CHARGE FOR CONNECTIONS

DOUBLE SCALE

38882

