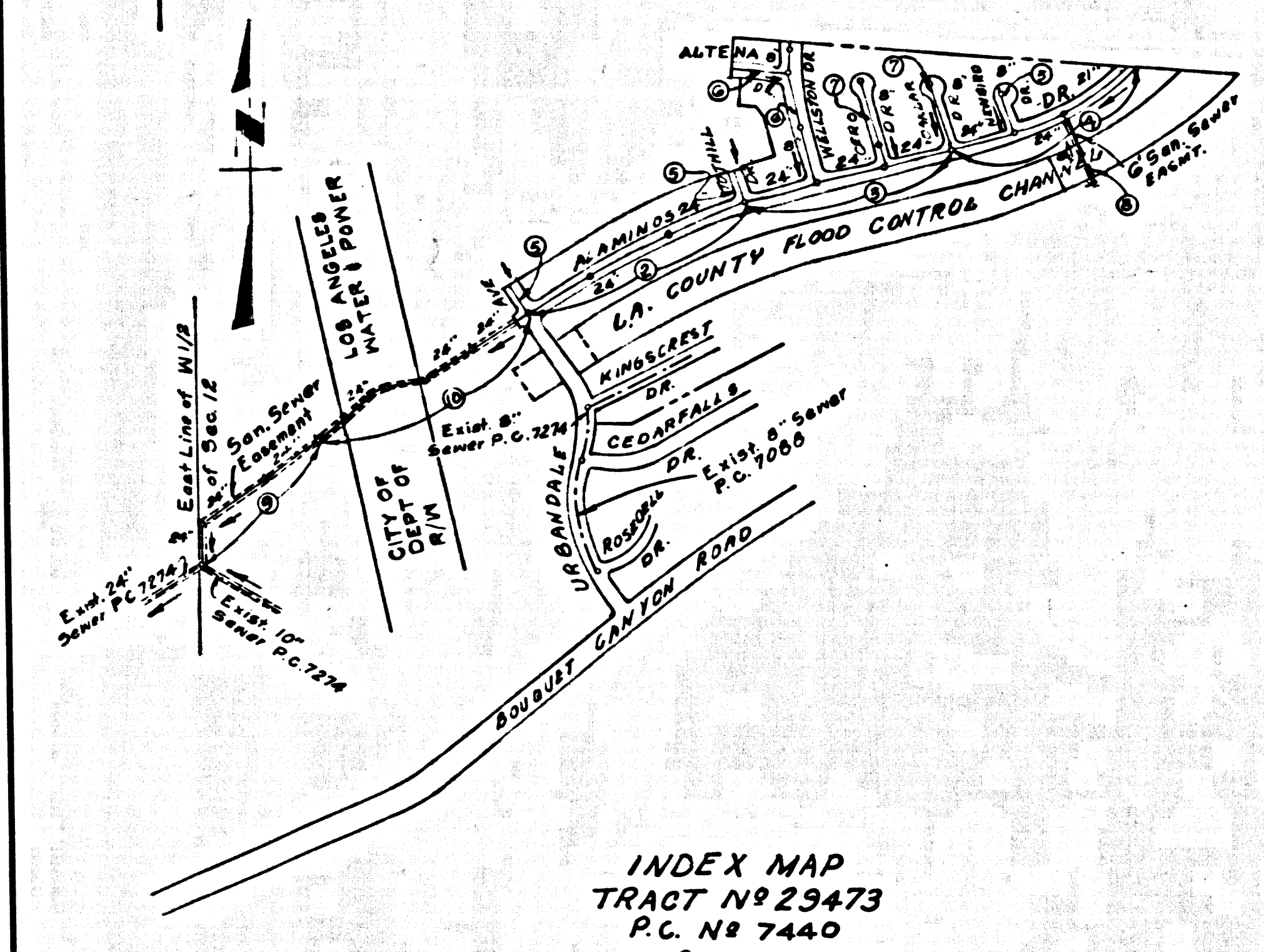


B.M. SL-1741 ELEV. 1349.390
 B.L.B.M.S. V-8 FLOOD CONT. MON.
 FLUSH 27 FT. SLY. 5/4 BOUGHET CANYON
 ROAD AND 175 FT. N.E. FLUM CANYON RD.
 NEWHALL QUAD. 19 58



INDEX MAP
 TRACT NO. 29473
 P.C. NO. 7440
 SCALE 1" = 600'

NOTE: NUMBER IN CIRCLES INDICATE PAGE NUMBERS.

REVISION
 All Pages - Change 1-6-66
 6" H.L. 15 to 4" H.L. 5
 APPROVED [Signature] 1/13/66
 OFFICE OF COUNTY ENGR.

Any connection to the sewage system of County Sanitation District, provided directly or indirectly by the sewers shown on these plans, shall be considered a temporary connection until all area covered is annexed to said district, at which time the connection shall become permanent. If for any reason the annexation to the district of any area covered hereunder is not completed, the property not in the district will be required to disconnect unless a contract is entered into with the district providing for the disposal of sewage from the area.

NO CONNECTIONS FOR THE DISPOSAL OF INDUSTRIAL WASTES SHALL BE MADE TO SEWERS SHOWN ON THESE DRAWINGS WITHOUT WRITTEN PERMISSION FROM THE CHIEF ENGINEER AND GENERAL MANAGER OF THE COUNTY SANITATION DISTRICTS.

DOUBLE SCALE
 NEWHALL BLDG. DIST. NO. 8.2

PROFILE ALIGNMENT AND GRADE OF P.C. 7440-R
 SANITARY SEWERS PAGE 1

TRACT NO. 29473

PRIVATE CONTRACT NO. 7440 R

W.S. 62
 5 SHEETS, 10 PAGES
 SCALE: VERT. 1" = 4' HORIZ. 1" = 40'
 OCTOBER 1, 1965
 PREPARED BY THE OFFICE OF
 McINTIRE & QUIROS INC.

37902

FOR LEGEND SEE PLAN NO. S-1

- PROVIDE STAKES ON THE PROPERTY LINE OR PROPERTY LINES PRODUCED AT RIGHT ANGLES TO THE SEWER LINE AT THE CENTER LINE OF EACH MANHOLE.
- NO REPRESENTATIVE OF THE COUNTY ENGINEER WILL SURVEY OR LAY OUT ANY PORTION OF THE WORK.
- THE PRIVATE ENGINEER SHALL FURNISH THE COUNTY ENGINEER WITH GRADE POINTS AND STATIONING FOR ALL HOUSE LATERALS AND Y BRANCHES AND SHALL PROVIDE STAKES FOR THEM AT THEIR PROPER LOCATIONS WITH STATIONING PLAINLY MARKED. ALL HOUSE LATERALS SHALL BE CONSTRUCTED IN A STRAIGHT ALIGNMENT AT RIGHT ANGLES FROM THE MAIN LINE SEWER EXCEPT AS SHOWN ON THE PLANS. HOUSE LATERALS FROM CHIMNEYS SHALL NOT HAVE AN ANGLE OF LESS THAN 45° WITH THE MAIN LINE SEWER. ANY CHANGE IN ALIGNMENT SHALL BE REQUESTED IN WRITING BY THE PRIVATE ENGINEER.
- THE PRIVATE ENGINEER SHALL FURNISH THE HOUSE LATERAL DEPTH AT THE PROPERTY LINE BELOW THE TOP OF CURB ELEVATION FOR EACH HOUSE LATERAL ON THE GRADE SHEET.
- NO REVISIONS SHALL BE MADE IN THESE PLANS WITHOUT THE APPROVAL OF THE COUNTY ENGINEER.
- THE CONTRACTOR SHALL NOTIFY THE CONSTRUCTION DIVISION BY TELEPHONE, MADISON 9-4747, EXT. 8151, AT LEAST TWENTY-FOUR HOURS BEFORE STARTING ANY WORK UNDER THIS CONTRACT.
- MANHOLES SHALL BE BRICK SEWER STRUCTURES PER S-2 "CAST CONCRETE MANHOLES PER S-5 OR S-6 - "MANHOLE DEPTH" - "MANHOLE DEPTH" BY SPECIFICATIONS APPROVED BY THE COUNTY ENGINEER - "NO SHOW ON PLANS"
- USE STANDARD MANHOLE FRAMES AND COVERS, S-15 EXCEPT AS NOTED.
- MANHOLE TOPS IN UNAPPROVED RIGHTS-OF-WAY TO BE SIX INCHES ABOVE FINISHED GRADE.
- USE EXTRA STRENGTH PIPE. ALL PIPE IS STANDARD DEPTH EXCEPT AS NOTED.
- USE COMPRESSORS OR MECHANICAL JOINTS FOR ALL V.C.P. JOINTS PER SPEC., SECT. 24 & 40.
- WHERE EVER GROUND WATER IS ENCOUNTERED DURING THE CONSTRUCTION OF THE SEWERS, THE V.C.P. JOINTS SHALL BE BRASS OR COPPER PER SPEC. SECTION 40-4-40-40 MECHANICAL JOINTS PER SPEC., SEC. 34.
- IF A POWER POLE IS WITHIN THREE FEET OF THE SEWER, THE SEWER SHALL BE ENCASED, PER S-23, TWO FEET ON EACH SIDE FROM THE POINT OF INTERFERENCE.
- IF DURING THE COURSE OF CONSTRUCTION IT IS DETERMINED THAT THERE IS LESS THAN FOUR FEET OF COVER OVER THE TOP OF A MAIN LINE OR HOUSE LATERAL V.C.P. SEWER WHICH IS NOT INDICATED ON THE PLANS, THE PIPE SHALL BE ENCASED PER S-23 UNLESS OTHERWISE APPROVED BY THE COUNTY ENGINEER.
- HOUSE LATERALS TO BE CONSTRUCTED WITH BRICKS AT PROPERTY LINE... FEET BELOW CURB GRADE EXCEPT AS NOTED.
- REWORK ALL TRENCHES WITHIN PAVED AREAS TO MEET L.A. COUNTY ROAD DEPT. OR CALIFORNIA STATE HIGHWAY REQUIREMENTS IN ACCORDANCE WITH PERMITS.
- FOR ALLOWABLE LEAKAGE TEST USE FORMULA NO. 1... SPEC., SEC. 84.
- ALL STATE AND LOCAL TRENCH SAFETY ORDERS SHALL BE RIGIDLY ENFORCED.

NOTE: THE CONTRACTOR MUST NOTIFY THE PACIFIC TEL. CO. AT LEAST 24 HRS. PRIOR TO EXCAVATING IN THE VICINITY OF THE COAXIAL CABLE CALL MR. LEO SORRENTINO AT THE NEWHALL OFFICE - TEL AREA CODE 805, 259-5850

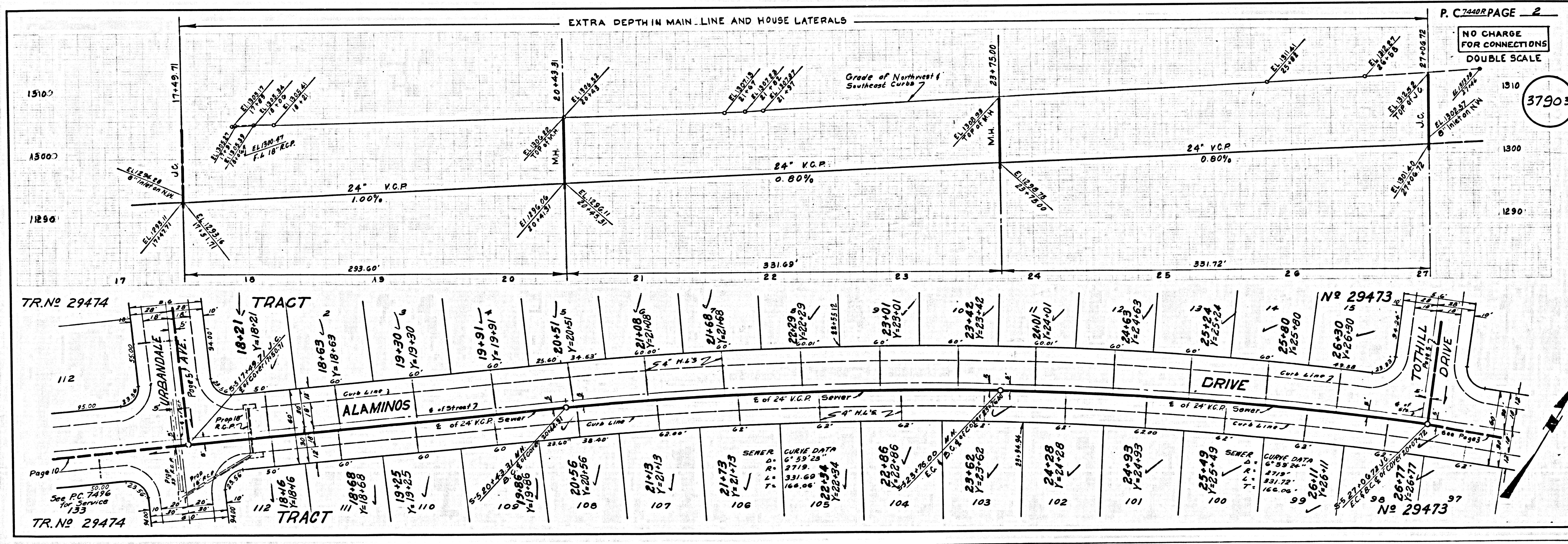
NOTE: GRADES TO WHICH THIS IMPROVEMENT IS TO BE CONSTRUCTED ARE SHOWN ON PLANS AND PROFILES. GRADE POINTS FOR TOP OF CURB, CENTER LINE OF STREETS, OR CENTER LINE OF ALLEYS ARE SHOWN BY CIRCLES ON PROFILES. AT ALL POINTS BETWEEN DESIGNATED POINTS THE GRADE SHALL BE ESTABLISHED SO AS TO CONFORM TO A STRAIGHT LINE DRAWN BETWEEN SAID DESIGNATED POINTS. ELEVATIONS ARE IN FEET ABOVE U.S.C. & G.S. SEA LEVEL, DATUM OF 1929. THIS DRAWING AND THE DATA HEREON ARE HEREBY MADE A PART OF THE SPECIFICATIONS. BEFORE THE CONTRACTOR SHALL BE PROSECUTED ONLY IN THE PRESENCE OF THE COUNTY ENGINEER. BEFORE WORK CAN BE STARTED, THE CONTRACTOR MUST OBTAIN A PERMIT TO EXCAVATE IN COUNTY STREETS FROM THE L.A. COUNTY ROAD DEPT., DISTRICT OFFICE NO. 6 AND PAY A FEE TO THE COUNTY ENGINEER, ROOM 320, COUNTY ENGINEERING BUILDING, 800 WEST SECOND STREET, LOS ANGELES, CALIFORNIA. REGIONAL OFFICE, SUFFICIENT TO COVER THE COST OF CONSTRUCTION INSPECTION AND RECORD PLANS. THE COUNTY OF LOS ANGELES DOES NOT CONSTITUTE A REPRESENTATION AS TO THE ACCURACY OF THE LOCATION OF OR THE EXISTENCE OR NON-EXISTENCE OF ANY UNDERGROUND UTILITY PIPE, OR STRUCTURE WITHIN THE LIMITS OF THIS PROJECT. THIS NOTE APPLIES TO ALL PAGES. IF WORK IS TO BE DONE IN A STATE HIGHWAY, A PERMIT MUST BE OBTAINED FROM THE STATE OF CALIFORNIA, DIVISION OF HIGHWAYS, 120 SOUTH SPRING STREET, LOS ANGELES, CALIFORNIA.

COUNTY OF LOS ANGELES, CALIFORNIA
 JOHN A. LAMBIE, COUNTY ENGINEER J. D. PARKHURST, CHIEF ENGINEER
 CO. SEAL 000 100-23
 APPROVED BY [Signature] ASSISTANT SANITATION ENGINEER APPROVED BY [Signature] OFFICE ENGINEER

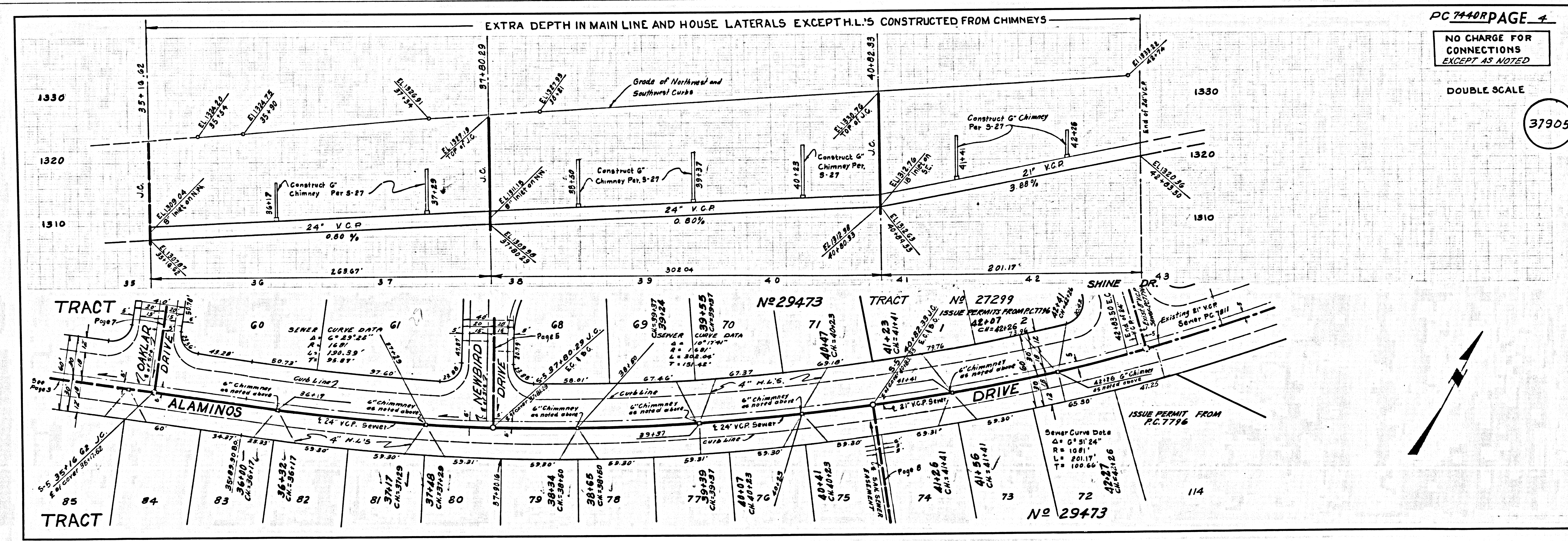
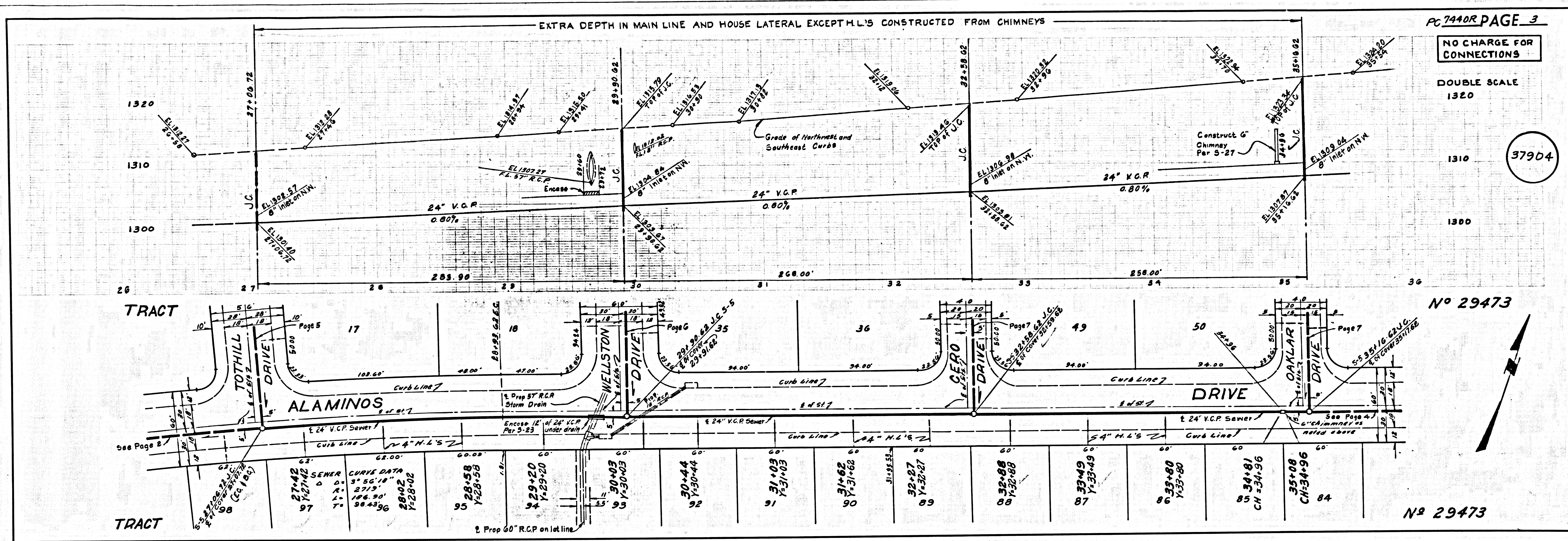
CHECKED BY [Signature] 10/13/65
 REG. C.E. NO. 13706

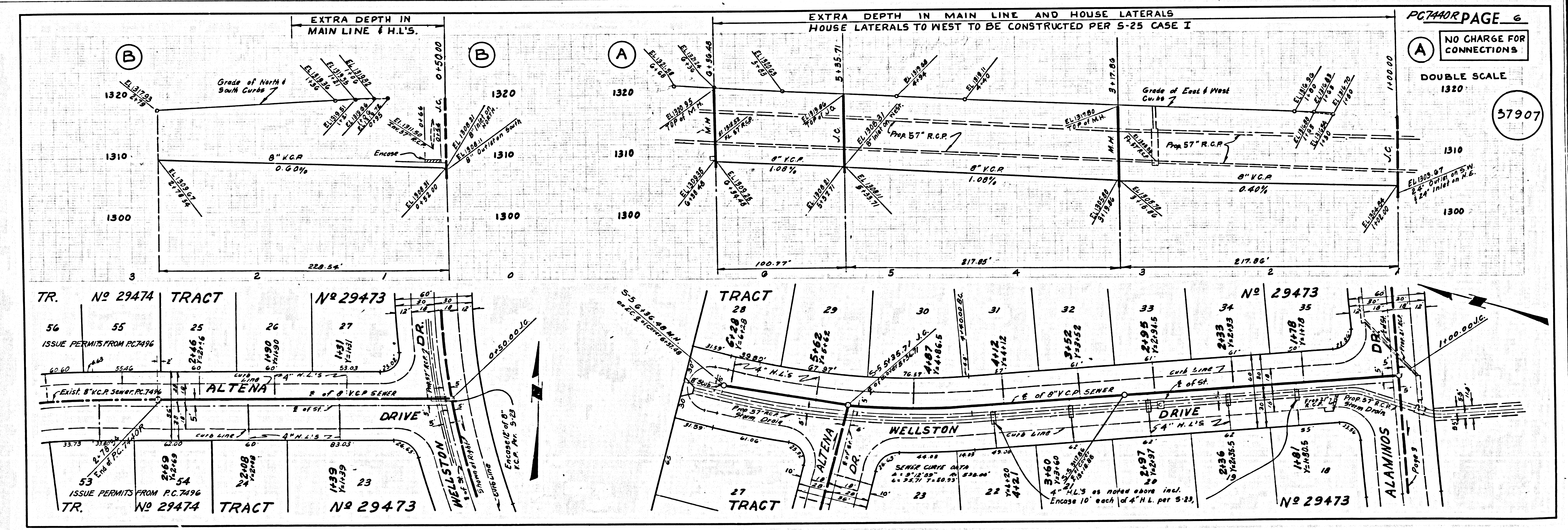
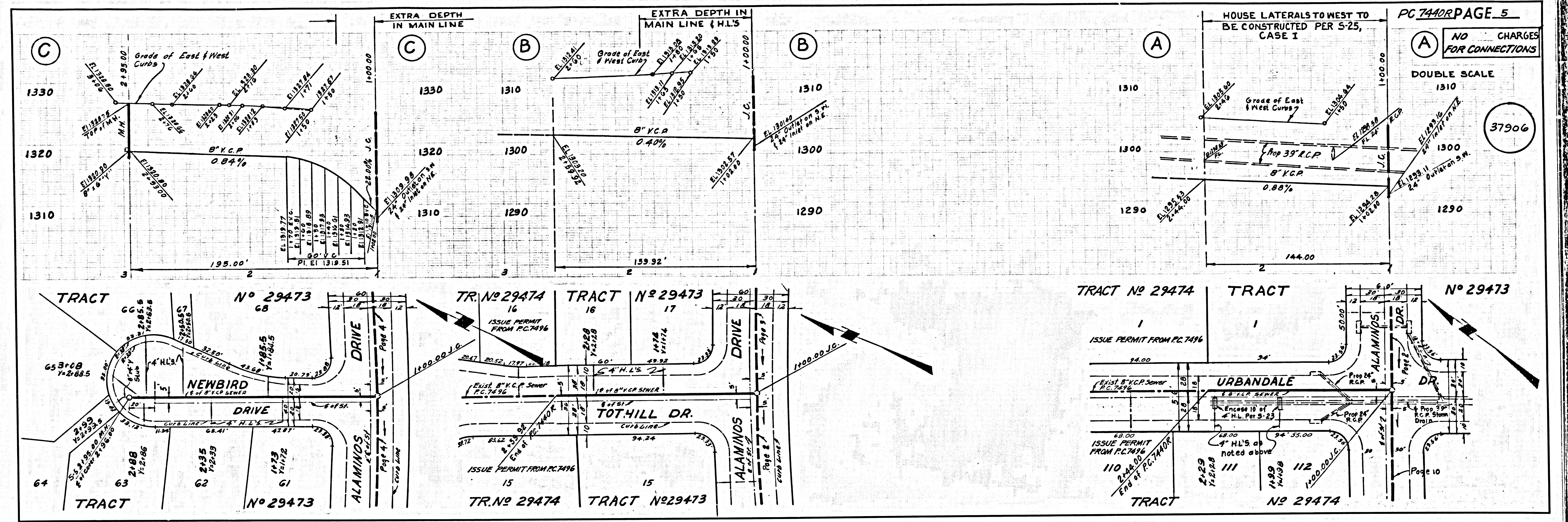
COLLECT CHARGES AS INDICATED
 [Signature]

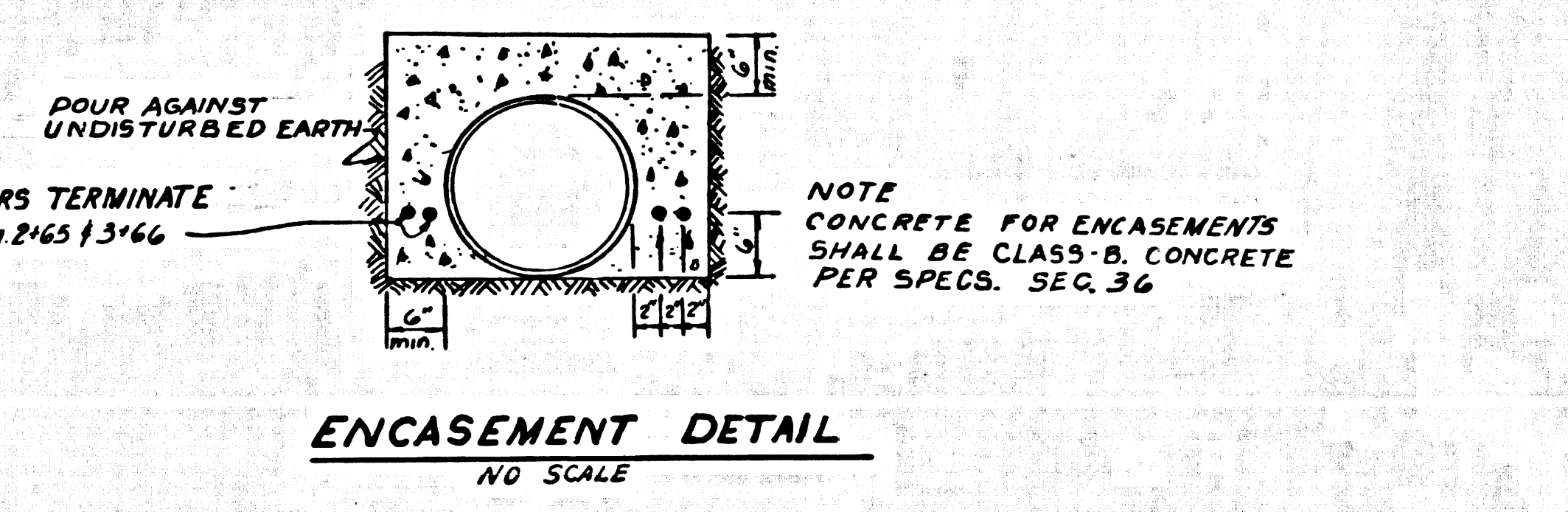
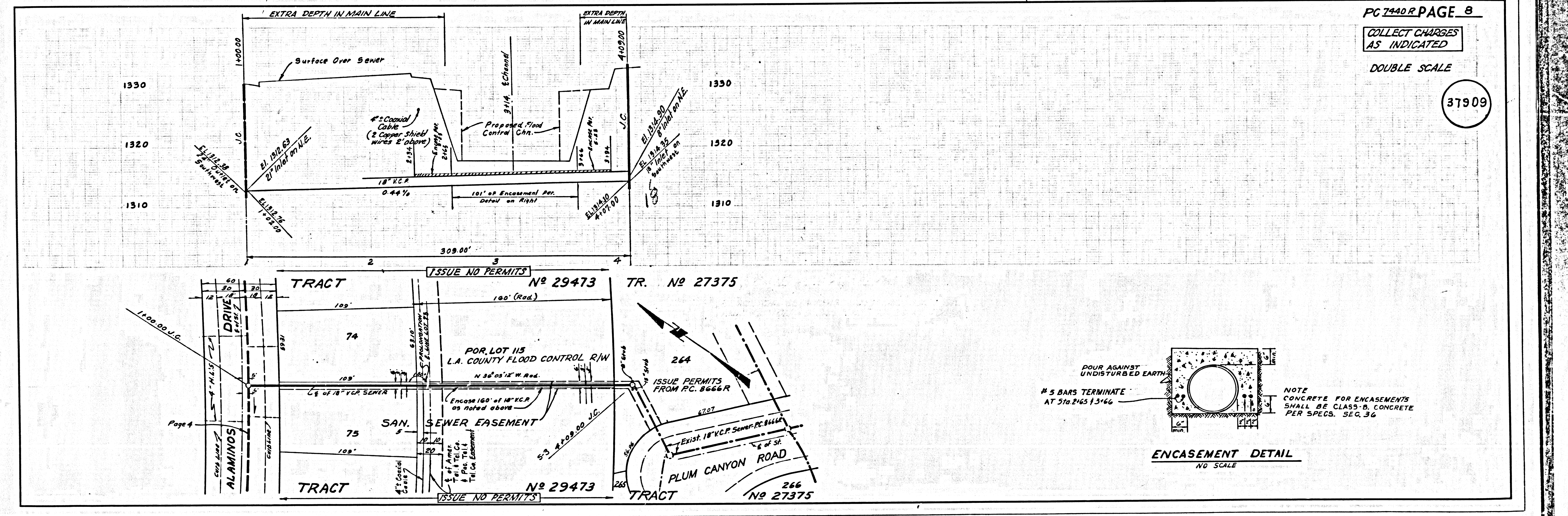
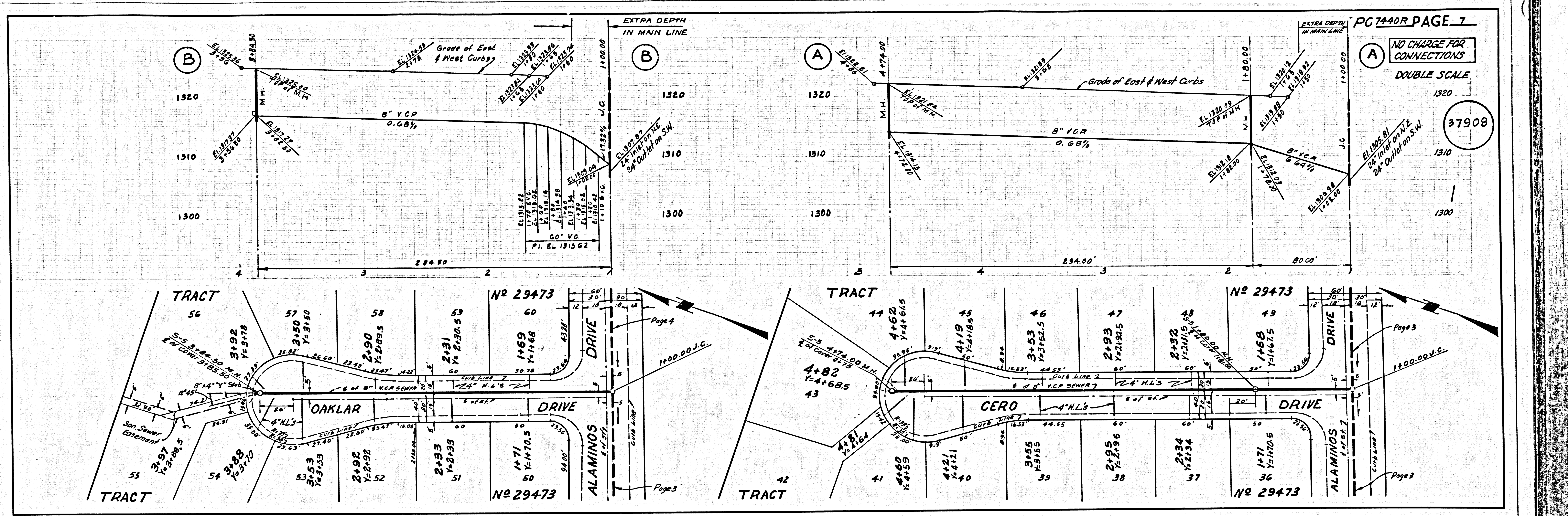
J.N. 036624

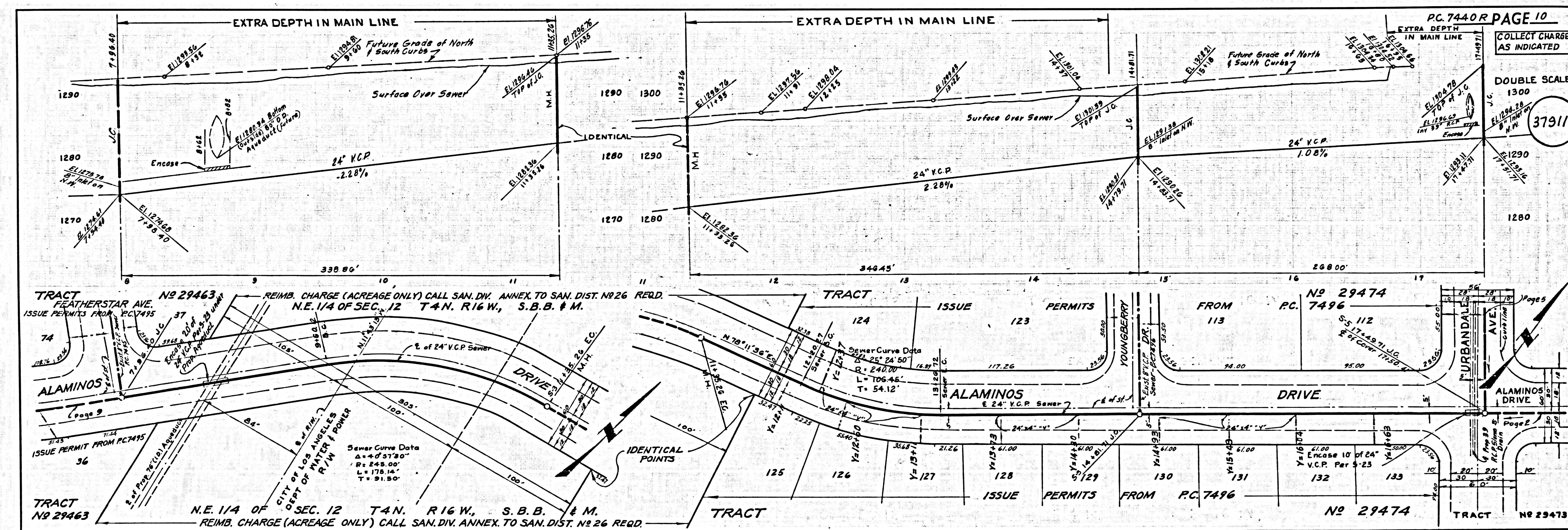
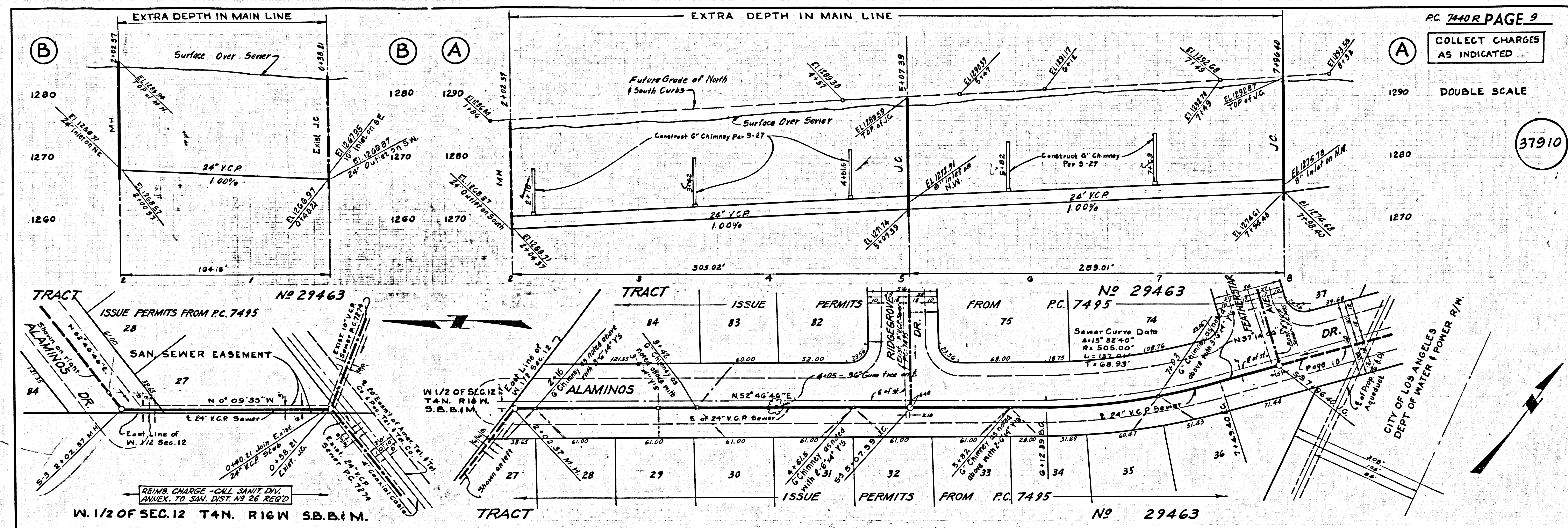


P.C. 7440-R PAGE 2
 NO CHARGE FOR CONNECTIONS
 DOUBLE SCALE
 37903

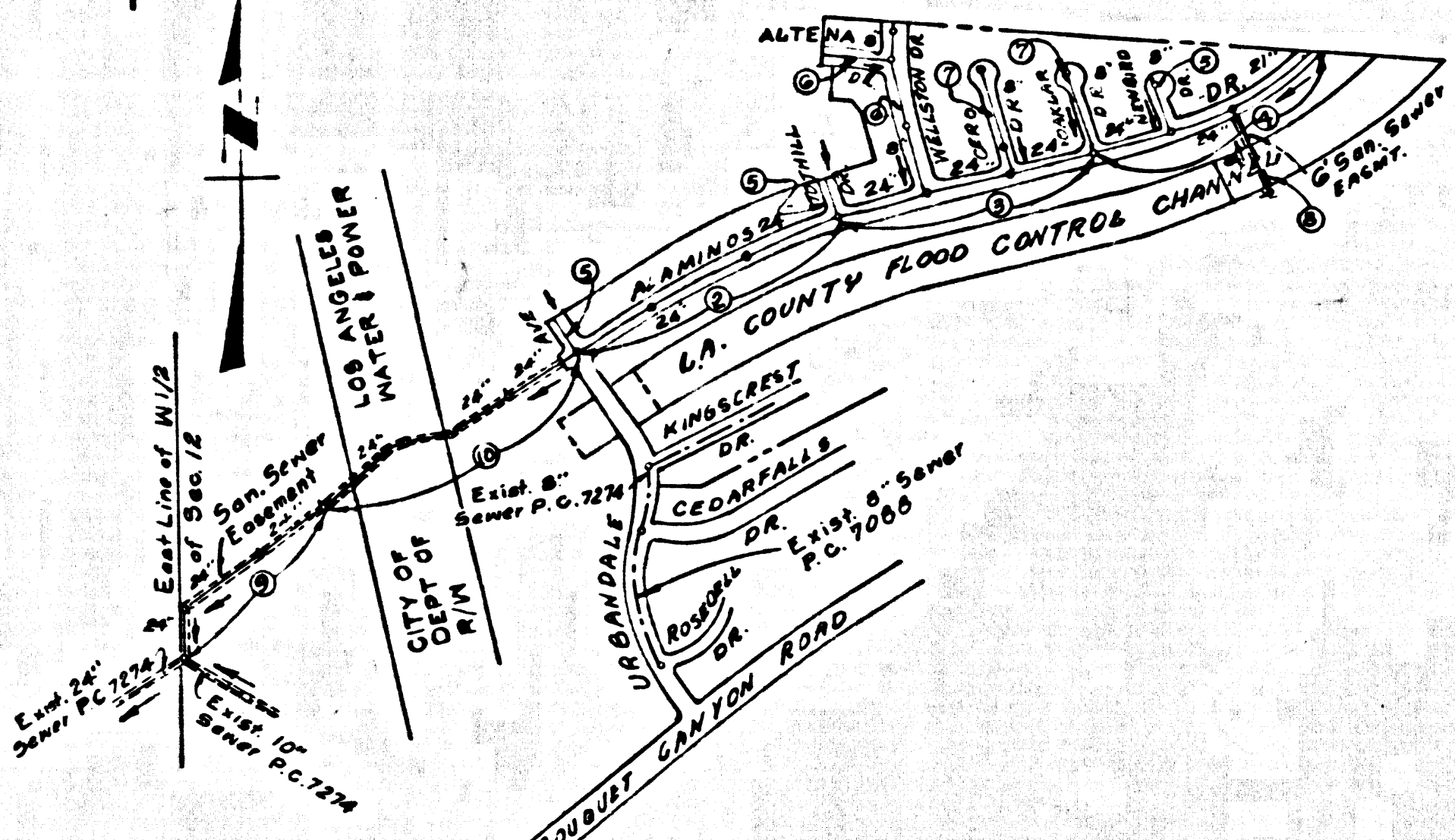








B.M. 5L-1741 ELEV. 1349.390
 B.L.B.M.S V-8 FD FLOOD CONT. MON.
 FLUSH 27 FT. SLX. 5/4 BOUQUET CANYON
 ROAD AND 175 FT. NLX. OF PLUM CANYON R.D.
 NEWHALL QUAD. 19 58



INDEX MAP
 TRACT NO 29473
 P.C. NO 7440
 SCALE 1" = 600'

NOTE: NUMBER IN CIRCLES INDICATE PAGE NUMBERS.

REVISION
 All Pages - Change
 6/14/66
 APPROVED [Signature]
 OFFICE OF COUNTY ENGR.

Any connection to the sewage system of County Sanitation District, provided directly or indirectly by the sewers shown on these plans, shall be considered a temporary connection until all area covered is annexed to said district, at which time the connection shall become permanent. If for any reason the annexation to the district of any area covered hereunder is not completed, the property not in the district will be required to disconnect unless a contract is entered into with the district providing for the disposal of sewage from the area.

NO CONNECTIONS FOR THE DISPOSAL OF INDUSTRIAL WASTES SHALL BE MADE TO SEWERS SHOWN ON THESE DRAWINGS WITHOUT WRITTEN PERMISSION FROM THE CHIEF ENGINEER AND GENERAL MANAGER OF THE COUNTY SANITATION DISTRICTS.

DOUBLE SCALE
 NEWHALL BLDG. DIST. NO. 82

PROFILE ALIGNMENT AND GRADE OF
 SANITARY SEWERS
 CONSTRUCTED IN
 P.C. 7440 R
 PAGE 1

TRACT NO 29473

PRIVATE CONTRACT NO. 7440 R

W.S. 62
 5 SHEETS, 10 PAGES

SCALE: VERT. 1" = 4' HORIZ. 1" = 40'

DATE: OCTOBER, 1965

PREPARED IN THE OFFICES OF
 MEINTIRE & QUIROS INC.

REG. C.E. NO. 6583

FOR LEGEND SEE PLAN NO. 5-1

- PROVIDE STAKES ON THE PROPERTY LINE OR PROPERTY LINES PRODUCED AT RIGHT ANGLES TO THE SEWER LINE AT THE CENTER LINE OF EACH MANHOLE.
- NO REPRESENTATIVE OF THE COUNTY ENGINEER WILL SURVEY OR LAY OUT ANY PORTION OF THE WORK.
- THE PRIVATE ENGINEER SHALL FURNISH THE COUNTY ENGINEER WITH GRADE SHEETS AND STATIONING FOR ALL HOUSE LATERALS AND Y BRANCHES AND SHALL PROVIDE STAKES FOR THEM AT THEIR PROPER LOCATIONS WITH STATIONING PLAINLY MARKED. ALL HOUSE LATERALS SHALL BE CONSTRUCTED IN A STRAIGHT ALIGNMENT AT RIGHT ANGLES FROM THE MAIN LINE SEWER EXCEPT AS SHOWN ON THE PLANS. HOUSE LATERALS FROM CHIMNEYS SHALL NOT HAVE AN ANGLE OF LESS THAN 45° WITH THE MAIN LINE SEWER. ANY CHANGE IN ALIGNMENT SHALL BE REQUESTED BY WRITING BY THE PRIVATE ENGINEER.
- THE PRIVATE ENGINEER SHALL FURNISH THE HOUSE LATERAL DEPTH AT THE PROPERTY LINE BELOW THE TOP OF CURB ELEVATION FOR EACH HOUSE LATERAL ON THE GRADE SHEET.
- NO REVISIONS SHALL BE MADE IN THESE PLANS WITHOUT THE APPROVAL OF THE COUNTY ENGINEER.
- THE CONTRACTOR SHALL NOTIFY THE CONSTRUCTION DIVISION BY TELEPHONE, MADISON 9-6747, EXT. 8128, AT LEAST TWENTY-FOUR HOURS BEFORE STARTING ANY WORK UNDER THIS CONTRACT.
- MANHOLES SHALL BE BRICK SEWER STRUCTURES PER S-5 PERCAST CONCRETE MANHOLES PER S-5 OR S-5 "MAN-90" TYPE "MAN-90" APPROVED BY LOCATIONS APPROVED BY THE COUNTY ENGINEER. AS SHOWN ON PLANS.
- USE STANDARD MANHOLE FRAMES AND COVERS, S-18 EXCEPT AS NOTED.
- MANHOLE TOPS IN UNIMPROVED RIGHTS-OF-WAY TO BE SIX INCHES ABOVE FINISHED GRADE.
- USE EXTRA STRENGTH PIPE. ALL PIPE IS STANDARD DEPTH EXCEPT AS NOTED.
- USE COMPRESSURE OR MECHANICAL COMPRESSION JOINTS FOR ALL V.C.P. JOINTS PER SPEC., SECS. 34 & 40.
- WHERE EVER GROUND WATER IS ENCOUNTERED DURING THE CONSTRUCTION OF THE SEWERS, THE V.C.P. JOINTS SHALL BE MECHANICAL COMPRESSION JOINTS PER SPEC., SECS. 34 & 40.
- IF A POWER POLE IS WITHIN THREE FEET OF THE SEWER, THE SEWER SHALL BE ENCASED, PER S-23, TWO FEET ON EACH SIDE FROM THE POINT OF INTERFERENCE.
- IF DURING THE COURSE OF CONSTRUCTION IT IS DETERMINED THAT THERE IS LESS THAN FOUR FEET OF COVER OVER THE TOP OF A MAIN LINE OR HOUSE LATERAL V.C.P. SEWER WHICH IS NOT INDICATED ON THE PLANS, THE PIPE SHALL BE ENCASED PER S-23 UNLESS OTHERWISE APPROVED BY THE COUNTY ENGINEER.
- HOUSE LATERALS TO BE CONSTRUCTED WITH INVERTS AT PROPERTY LINE... FEET BELOW CURB GRADE EXCEPT AS NOTED.
- REINFORCE ALL TRENCHES WITHIN HAZARD AREAS TO MEET L.A. COUNTY ROAD DIST. OR CALIFORNIA STATE HIGHWAY REQUIREMENTS IN ACCORDANCE WITH PERMITS.
- FOR ALLOWABLE LEAKAGE TEST USE FORMULA NO. 1, SPEC. SEC. 84.
- ALL STATE AND LOCAL TRENCH SAFETY ORDERS WILL BE RIGIDLY ENFORCED.

NOTE: THE CONTRACTOR MUST NOTIFY THE PACIFIC TEL. CO. AT LEAST 24 HRS. PRIOR TO EXCAVATING IN THE VICINITY OF THE COAXIAL CABLE CALL MR. LEO SORRENTINO AT THE NEWHALL OFFICE - TEL AREA CODE 805, 259-5850

GRADES TO WHICH THIS IMPROVEMENT IS TO BE CONSTRUCTED ARE SHOWN ON PLANS AND PROFILES. GRADE POINTS FOR TOP OF CURBS, CENTER LINE OF STREETS, OR CENTER LINE OF ALLEYS ARE SHOWN BY CIRCLES ON PROFILES. AT ALL POINTS BETWEEN DESIGNATED POINTS THE GRADE SHALL BE ESTABLISHED SO AS TO CONFORM TO A STRAIGHT LINE DRAWN BETWEEN SAID DESIGNATED POINTS. ELEVATIONS ARE IN FEET ABOVE U.S.C. & G.S. SEA LEVEL DATUM OF 1929.

THIS DRAWING AND THE DATA HEREON ARE HEREBY MADE A PART OF THE SPECIFICATIONS. AS APPLICABLE TO THE WORK TO BE CONSTRUCTED ACCORDING TO STANDARD SPECIFICATIONS DATED JULY 28, 1964 ON FILE IN THE OFFICE OF THE COUNTY ENGINEER AND SHALL BE PROSECUTED ONLY IN THE PRESENCE OF THE COUNTY ENGINEER.

BEFORE WORK CAN BE STARTED, THE CONTRACTOR MUST OBTAIN A PERMIT TO EXCAVATE IN COUNTY STREETS FROM THE L.A. COUNTY ROAD DEPT., DISTRICT OFFICE NO. 1, 1100 S. GARDEN ST., LOS ANGELES, CALIF. AND PAY A FEE TO THE COUNTY ENGINEER, ROOM 300, COUNTY ENGINEERING BUILDING, ONE WEST SECOND STREET, LOS ANGELES, CALIF. REGIONAL OFFICE, SUBJECT TO COVER THE COST OF CONSTRUCTION INSPECTION AND RECORD PLANS.

APPROVAL OF THIS PLAN BY THE COUNTY OF LOS ANGELES DOES NOT CONSTITUTE A REPRESENTATION AS TO THE ACCURACY OF THE LOCATION OF OR THE EXISTENCE OR NON-EXISTENCE OF ANY UNDERGROUND UTILITY PIPE, OR STRUCTURE WITHIN THE LIMITS OF THIS PROJECT. THIS NOTE APPLIES TO ALL PAGES.

IF WORK IS TO BE DONE IN A STATE HIGHWAY, A PERMIT MUST BE OBTAINED FROM THE STATE OF CALIFORNIA, DIVISION OF HIGHWAYS, 120 SOUTH SPRING STREET, LOS ANGELES, CALIFORNIA.

COUNTY OF LOS ANGELES, CALIFORNIA
 JOHN A. LAMBIE, COUNTY ENGINEER
 APPROVED BY: [Signature]
 ASSISTANT SANITATION ENGINEER

J. D. PARKHURST, CHIEF ENGINEER
 CO. SEAL NO. 10-63
 APPROVED BY: [Signature]
 OFFICE ENGINEER

CHECKED BY: [Signature] 10/13/65
 REG. C.E. NO. 13706

J.N. 036624

COLLECT CHARGES AS INDICATED
 [Signature]

