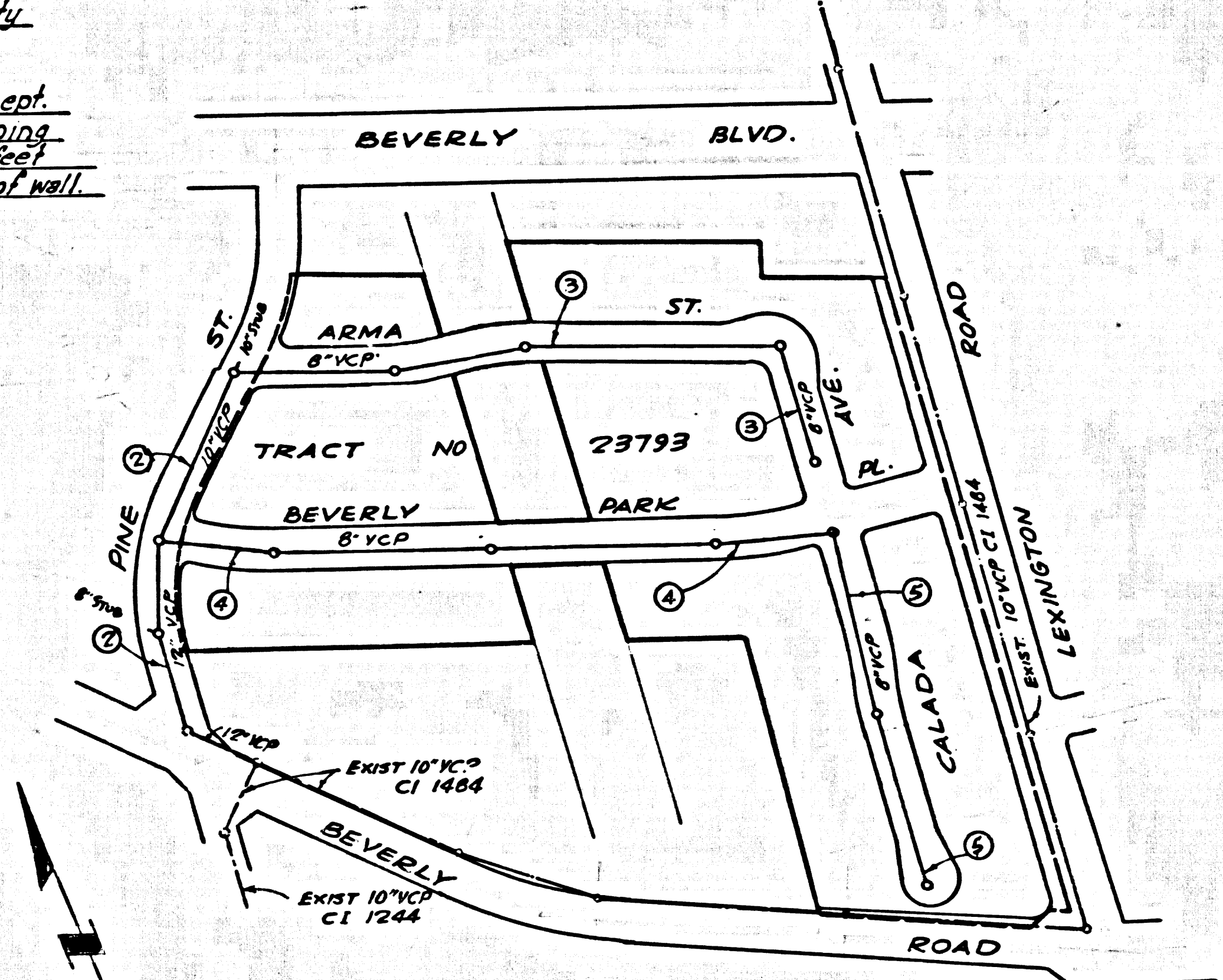


B.M. #2 ELEV. 177.955
 TOP OF COUNTY SURVEYOR BRASS CAP
 MARK SET IN CONC. 1431' WLY OF THE E. OF
 PINE ST. AND 50' SLY OF THE E. OF BEVERLY RD.
 CO. ENG. R. FA 799 PL. 328-336

EQUATION: City of Pico Rivera to L.A. County
 Road Department
 B.M. SY 3240 Los Angeles County Road Dept.
 L & B.N. in North end of 1 foot high retaining
 wall 65' feet S. of Beverly Road 1' 25" feet
 W. of Pine Street 2' feet So. of the end of wall.
 Rivera Open 1960
 L.A. Co. Rd. Dept. Elev. 179.809
 City of Pico Rivera Elev. 181.219



PICO RIVERA BLDG. DIST. NO. 1101

- NOTE:
1. PROVIDE STAKES ON THE PROPERTY LINE OR PROPERTY LINES PRODUCED AT RIGHT ANGLES TO THE SEWER LINE AT THE CENTER LINE OF EACH MANHOLE.
 2. NO REPRESENTATIVE OF THE CITY ENGINEER WILL SURVEY OR LAY OUT ANY PORTION OF THE WORK.
 3. THE PRIVATE ENGINEER SHALL FURNISH THE CITY ENGINEER WITH GRADE SHEETS AND STATIONING FOR ALL HOUSE LATERALS AND Y BRANCHES AND SHALL PROVIDE STAKES FOR THESE AT THEIR PROPER LOCATIONS WITH STATIONING PLAINLY MARKED. ALL HOUSE LATERALS SHALL BE CONSTRUCTED IN A STRAIGHT ALIGNMENT AT RIGHT ANGLES FROM THE MAIN LINE SEWER EXCEPT AS SHOWN ON THE PLANS. HOUSE LATERALS FROM CHIMNEYS SHALL NOT HAVE AN ANGLE OF LESS THAN 45° WITH THE MAIN LINE SEWER. ANY CHANGE IN ALIGNMENT SHALL BE REQUESTED IN WRITING BY THE PRIVATE ENGINEER.
 4. THE PRIVATE ENGINEER SHALL FURNISH THE HOUSE LATERAL DEPTH AT THE PROPERTY LINE BELOW THE TOP OF CURB ELEVATION FOR EACH HOUSE LATERAL ON THE GRADE SHEET.
 5. NO BYPASSING SHALL BE MADE IN THESE PLANS WITHOUT THE APPROVAL OF THE CITY ENGINEER.
 6. THE CONTRACTOR SHALL NOTIFY THE CONSTRUCTION DIVISION BY TELEPHONE, MADEON 9-47-67, EXT. 8158, AT LEAST TWENTY FOUR HOURS BEFORE STARTING ANY WORK UNDER THIS CONTRACT.
 7. MANHOLES SHALL BE BRICK SEWER STRUCTURES PER S-3. PRECAST CONCRETE MANHOLES PER S-5 OR S-6 MAY BE USED AS AN ALTERNATE IN LOCATIONS APPROVED BY THE CITY ENGINEER.
 8. USE STANDARD MANHOLE FRAMES AND COVERS, S-17 EXCEPT AS NOTED.
 9. MANHOLE TOPS IN UNAPPROVED RIGHTS-OF-WAY TO BE SIX INCHES ABOVE FINISHED GRADE.
 10. USE EXTRA STRENGTH PIPE. ALL PIPE IS STANDARD DEPTH EXCEPT AS NOTED.
 11. USE MECHANICAL COMPRESSION JOINTS FOR ALL V.C.P. JOINTS PER SPECS. SECS. 34, 48 & 49.

12. IF A POWER POLE IS WITHIN THREE FEET OF THE SEWER, THE SEWER SHALL BE ENCASED, PER S-23 TWO FEET ON EACH SIDE FROM THE POINT OF INTERFERENCE.
13. IF DURING THE COURSE OF CONSTRUCTION IT IS DETERMINED THAT THERE IS LESS THAN FOUR FEET OF COVER OVER THE TOP OF A MAIN LINE OR HOUSE LATERAL V.C.P. SEWER WHICH IS NOT INDICATED ON THE PLANS, THE PIPE SHALL BE ENCASED PER S-23 UNLESS OTHERWISE APPROVED BY THE CITY ENGINEER.
14. HOUSE LATERALS TO BE CONSTRUCTED WITH INVERTS AT PROPERTY LINE. 6 FEET BELOW CURB GRADE EXCEPT AS NOTED.
15. RESURFACE ALL TRENCHES WITHIN PAVED AREAS TO MEET CITY OF PICO RIVERA OR CALIFORNIA STATE HIGHWAY REQUIREMENTS IN ACCORDANCE WITH PERMITS.
16. FOR ALLOWABLE LEAKAGE TEST USE FORMULA NO. 2, SPECS. SEC. 54.
17. ALL STATE AND LOCAL TRAFFIC SAFETY ORDERS WILL BE RIGIDLY ENFORCED.
18. THE CONTRACTOR SHALL PROVIDE TRAFFIC CONTROL DURING CONSTRUCTION AS ARRANGED WITH THE CITY OF PICO RIVERA BEFORE CONSTRUCTION IS STARTED. HE SHALL ALSO PUT UP BARRIERS WITH THE CITY OF PICO RIVERA SUPERVISOR TO COVER THE COST OF THIS TRAFFIC CONTROL.

NO CONNECTIONS FOR THE DISPOSAL OF INDUSTRIAL WASTES SHALL BE MADE TO SEWERS SHOWN ON THESE DRAWINGS WITHOUT WRITTEN PERMISSION FROM THE CHIEF ENGINEER AND GENERAL MANAGER OF THE COUNTY SANITATION DISTRICTS.

COLLECT CHARGES AS INDICATED
[Signature]

APPROVED *[Signature]* 11-3-65
 DIRECTOR OF PUBLIC WORKS
 CITY OF PICO RIVERA

PROFILE ALIGNMENT AND GRADE OF
 SANITARY SEWERS PAGE 1

TO BE CONSTRUCTED IN
 TRACT No 23793

PRIVATE CONTRACT NO. 7451

W.S. 36
 3 SHEETS, 5 PAGES
 SCALE: VERT. 1"=4'
 HORIZ. 1"=40'
 DATE: OCTOBER, 1965

38009

PREPARED IN THE OFFICES OF
 TECHNOLOGICAL ENGINEERING CORPORATION
 4321 DUFFEE AVE., PICO RIVERA, CALIF.

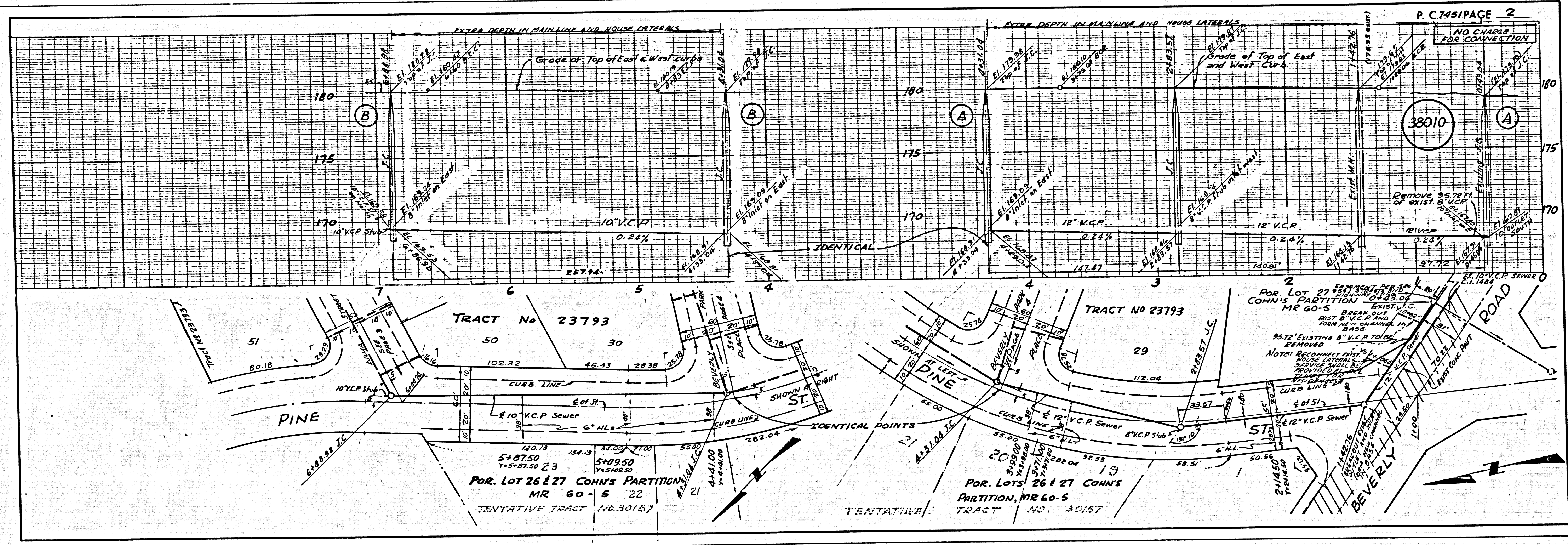
BY: *[Signature]*
 REG. C.E. NO. 10410

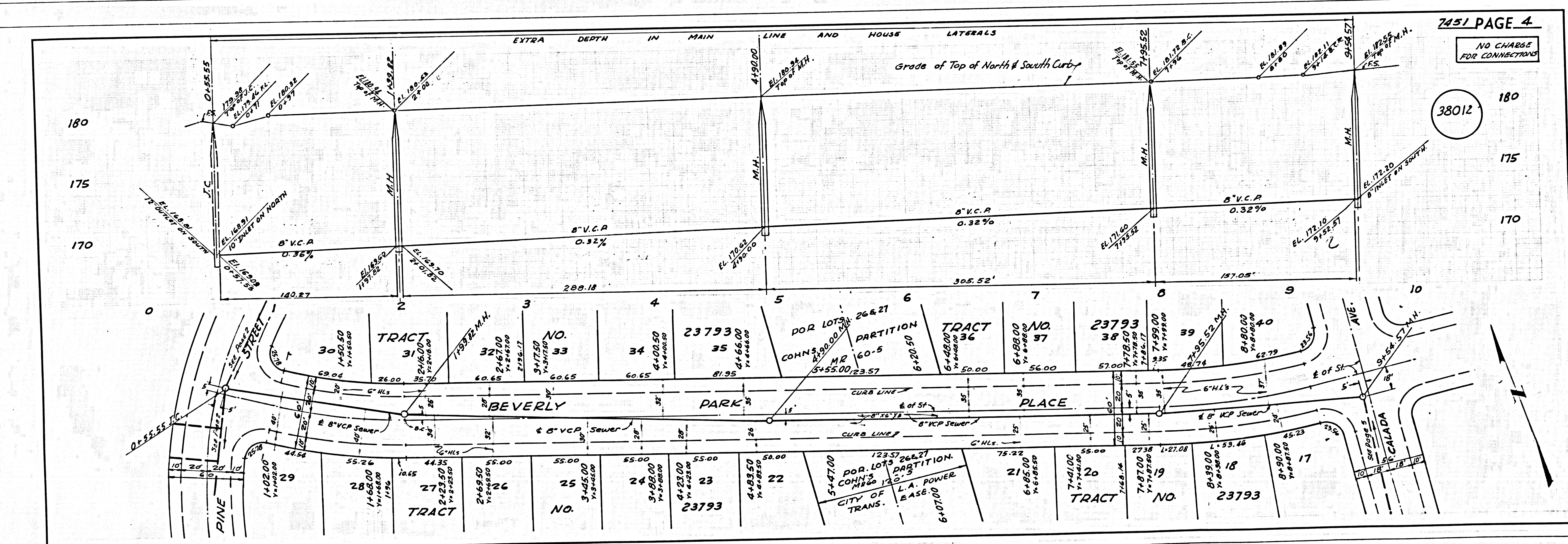
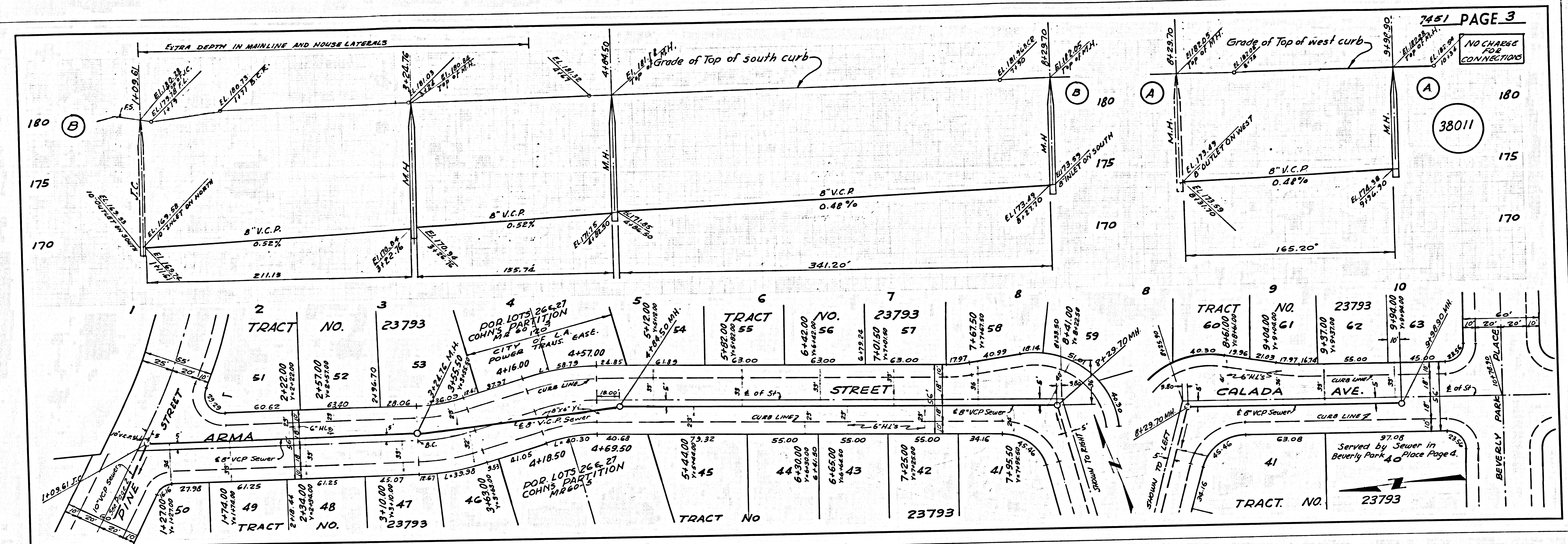
FOR LEGEND SEE PLAN NO. S-1

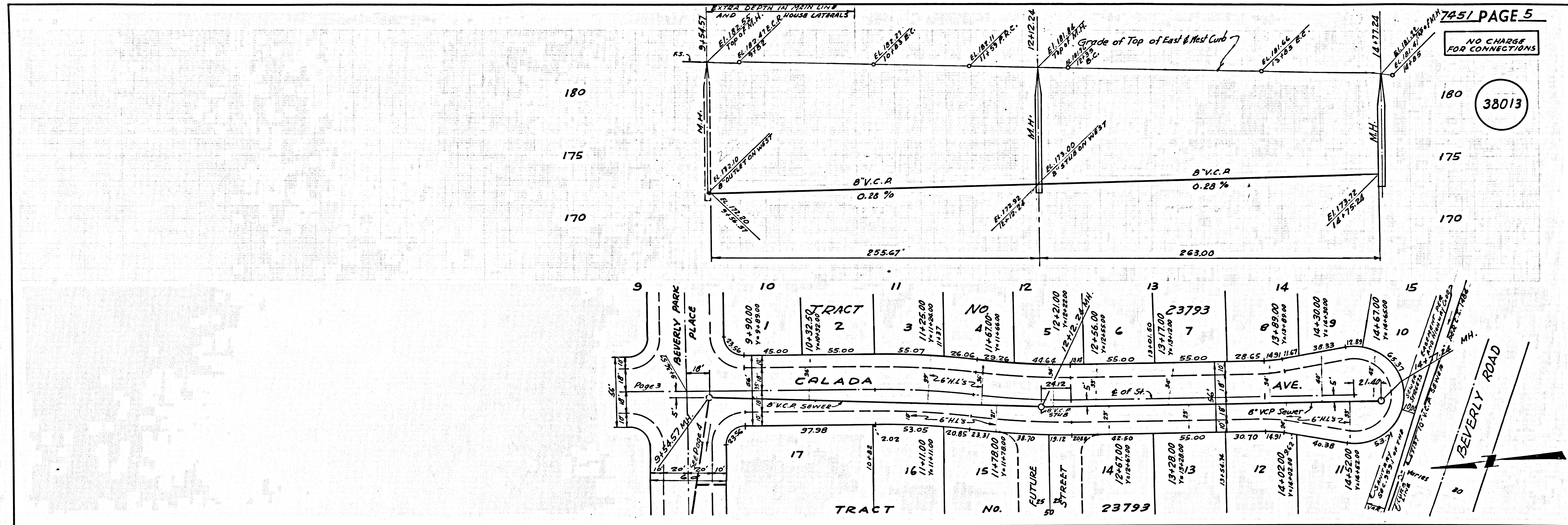
NOTE:
 GRADES TO WHICH THIS IMPROVEMENT IS TO BE CONSTRUCTED ARE SHOWN ON PLANS AND PROFILE GRADE POINTS FOR TOP OF CURBS, CENTER LINE OF STREETS, OR CENTER LINE OF ALLEYS ARE SHOWN BY CIRCLES ON PROFILES AT ALL POINTS BETWEEN DESIGNATED POINTS THE GRADE SHALL BE ESTABLISHED TO BE TO CONFORM TO A STRAIGHT LINE DRAWN BETWEEN SAID DESIGNATED POINTS. ELEVATIONS ARE IN FEET ABOVE U.S.C. & G.S. SEA LEVEL DATUM OF 1929. THE DRAWING AND THE DATA HEREON ARE HEREBY MADE A PART OF THE SPECIFICATIONS. WORK SHALL BE CONSTRUCTED ACCORDING TO STANDARD SPECIFICATIONS DATED MAY 25, 1962, ON FILE IN THE OFFICE OF THE CITY ENGINEER AND SHALL BE PROTECTED ONLY IN THE PRESENCE OF THE CITY ENGINEER. BEFORE WORK CAN BE STARTED, THE CONTRACTOR MUST OBTAIN A PERMIT TO EXCAVATE IN CITY STREETS FROM THE L.A. COUNTY ROAD DEPT. DISTRICT OFFICE NO. 4 AND MAKE A DEPOSIT WITH THE CITY OF PICO RIVERA. 60% PROVISIONAL AVAILABILITY, PICO RIVERA, SUFFICIENT TO COVER THE COST OF CONSTRUCTION, INSPECTION AND RECORD DRAWING. APPROVAL OF THIS PLAN BY THE CITY OF PICO RIVERA DOES NOT CONSTITUTE A REPRESENTATION AS TO THE ACCURACY OF THE LOCATION OR THE EXISTENCE OR NON-EXISTENCE OF ANY UNDERGROUND UTILITY PIPE, OR STRUCTURE WITHIN THE LIMITS OF THE PROJECT. THIS NOTE APPLIES TO ALL PAGES. IF WORK IS TO BE DONE IN A STATE HIGHWAY, A PERMIT MUST BE OBTAINED FROM THE STATE OF CALIFORNIA, DIVISION OF HIGHWAYS, 126 SOUTH SPRING STREET, LOS ANGELES, CALIFORNIA.

CITY OF PICO RIVERA, CALIFORNIA
 JOHN A. LAMBIE, CITY ENGINEER
 I. D. PARKHURST, CHIEF ENGINEER

APPROVED BY: *[Signature]* ASSISTANT SANITATION ENGINEER
 APPROVED BY: *[Signature]* OFFICE ENGINEER
 SUBMITTED BY: *[Signature]* REGIONAL ENGINEER, DEC 2871
 LOS CERRITOS
 CHECKED BY: *[Signature]* REG. C.E. NO. 2406







7451 PAGE 5

NO CHARGE FOR CONNECTIONS

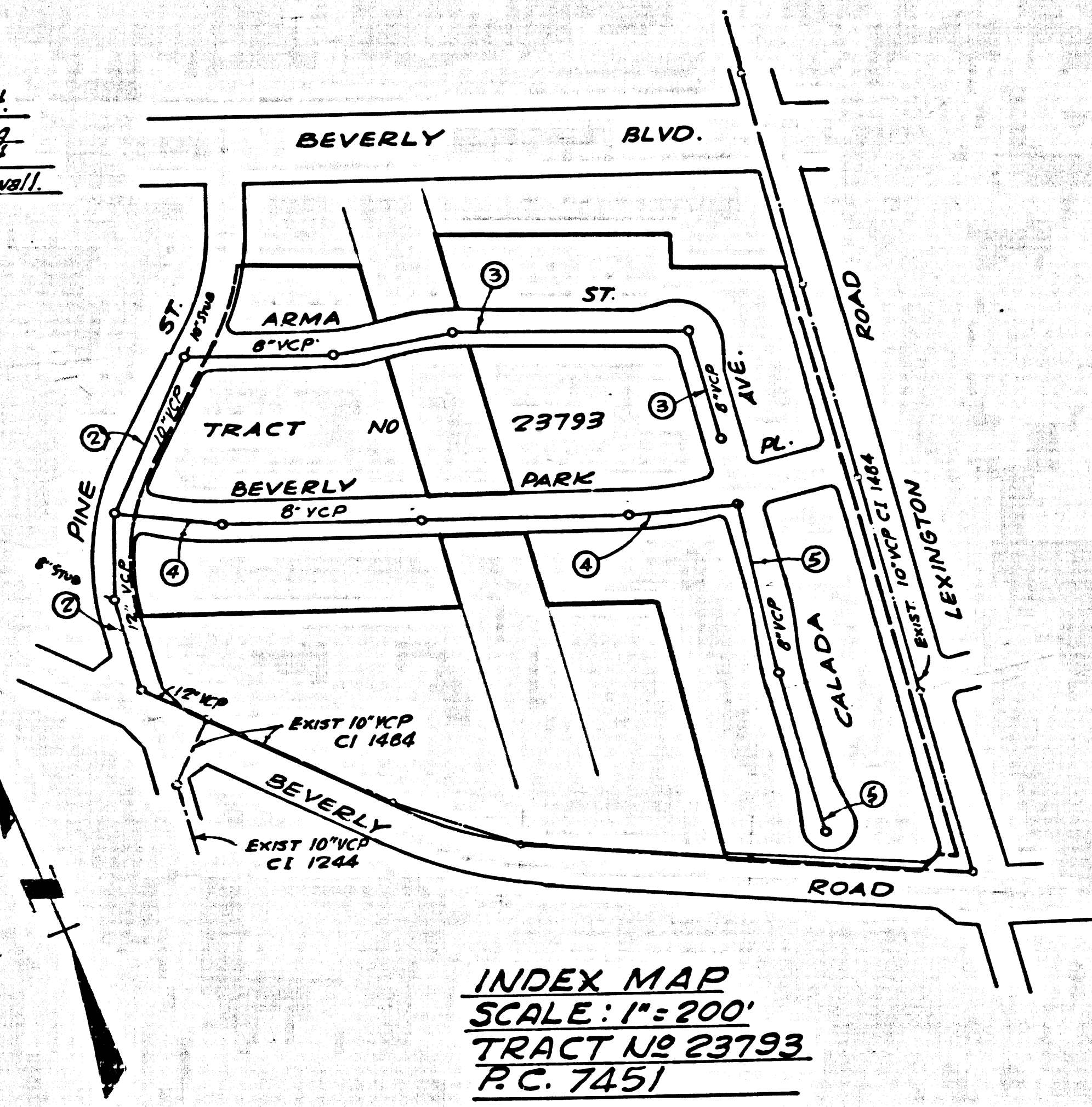
38013

PAGE

B.M. #2 ELEV. 177.955
 TOP OF COUNTY SURVEYOR BRASS CAP
 MAN. SET IN CONC. 4.43' WLY of the E of
 PINE ST. and 50' SLY of the E of BEVERLY RD.
 CO. ENG. R. FA 799 Pa. 328-336

EQUATION: City of Pico Rivera to L.A. County
 Road Department

B.M. SY 3240 Los Angeles County Road Dept.
 L & B.M. in North end of 1' foot high retaining
 wall @ 5' feet S. of Beverly Road & 25 feet
 W. of Pine Street 2 feet So. of the end of wall.
 Rivera Quad. 1960
 L.A. Co. Rd. Dept. Elev. 179.893
 City of Pico Rivera Elev. 181.219



PICO RIVERA BLDG. DIST. NO. 1101

- NOTE:
1. HOUSE STAGES ON THE PROPERTY LINE OR PROPERTY LINES PRODUCED AT RIGHT ANGLES TO THE SEWER LINE AT THE CENTER LINE OF EACH MANHOLE.
 2. NO REPRESENTATIVE OF THE CITY ENGINEER WILL SURVEY OR LAY OUT ANY PORTION OF THE WORK.
 3. THE PRIVATE ENGINEER SHALL FURNISH THE CITY ENGINEER WITH GRADE SHEETS AND STATIONING FOR ALL HOUSE LATERALS AND T-BRANCHES AND SHALL PROVIDE STAKES FOR THEM AT THEIR PROPER LOCATIONS WITH STATIONING PLAINLY MARKED. ALL HOUSE LATERALS SHALL BE CONSTRUCTED AT RIGHT ANGLES FROM THE MAIN LINE SEWER EXCEPT AS SHOWN ON THE PLANS. HOUSE LATERALS FROM CHIMNEYS SHALL NOT HAVE AN ANGLE OF LESS THAN 45° WITH THE MAIN LINE SEWER. ANY CHANGE IN ALIGNMENT SHALL BE REQUESTED IN WRITING BY THE PRIVATE ENGINEER.
 4. THE PRIVATE ENGINEER SHALL FURNISH THE HOUSE LATERAL DEPTH AT THE PROPERTY LINE BELOW THE TOP OF CURB ELEVATION FOR EACH HOUSE LATERAL ON THE GRADE SHEET.
 5. NO REVISIONS SHALL BE MADE IN THESE PLANS WITHOUT THE APPROVAL OF THE CITY ENGINEER.
 6. THE CONTRACTOR SHALL NOTIFY THE CONSTRUCTION DIVISION BY TELEPHONE, RADIO OR 9-47-47, EXT. 8151, AT LEAST TWENTY FOUR HOURS BEFORE STARTING ANY WORK UNDER THIS CONTRACT.
 7. MANHOLES SHALL BE BRICK SEWER STRUCTURES PER S-3 PRECAST CONCRETE MANHOLES PER S-5 OR S-6-G MAY BE USED AS AN ALTERNATE IN LOCATIONS APPROVED BY THE CITY ENGINEER.
 8. USE STANDARD MANHOLE FRAMES AND COVERS, S-15 EXCEPT AS NOTED.
 9. MANHOLE TOPS IN UNIMPROVED RIGHTS OF WAY TO BE FIVE INCHES ABOVE FINISHED GRADE.
 10. USE EXTRA STRENGTH PIPE. ALL PIPE IS STANDARD DEPTH EXCEPT AS NOTED.
 11. USE MECHANICAL COMPRESSION JOINTS FOR ALL V.C.P. JOINTS PER SPECS. SECS. 34, 48 & 49.

12. IF A POWER POLE IS WITHIN THREE FEET OF THE SEWER, THE SEWER SHALL BE ENCASED PER S-23 TWO FEET ON EACH SIDE FROM THE POINT OF INTERFERENCE.
13. IF DURING THE COURSE OF CONSTRUCTION IT IS DETERMINED THAT THERE IS LESS THAN FOUR FEET OF COVER OVER THE TOP OF A MAIN LINE OR HOUSE LATERAL V.C.P. SEWER WHICH IS NOT INDICATED ON THE PLANS, THE PIPE SHALL BE ENCASED PER S-23 UNLESS OTHERWISE APPROVED BY THE CITY ENGINEER.
14. HOUSE LATERALS TO BE CONSTRUCTED WITH INVERTS AT PROPERTY LINE. SIX FEET BELOW CURB GRADE EXCEPT AS NOTED.
15. RESURFACE ALL TRENCHES WITHIN PAVED AREAS TO MEET CITY OF PICO RIVERA OR CALIFORNIA STATE HIGHWAY REQUIREMENTS IN ACCORDANCE WITH PERMITS.
16. FOR ALLOWABLE LEAKAGE TEST USE FORMULA NO. 1, SPECS. SEC. 34.
17. ALL STATE AND LOCAL TRAFFIC SAFETY ORDERS WILL BE RIGIDLY ENFORCED.
18. THE CONTRACTOR SHALL PROVIDE TRAFFIC CONTROL DURING CONSTRUCTION AS ARRANGED WITH THE CITY OF PICO RIVERA BEFORE CONSTRUCTION IS STARTED. HE SHALL ALSO PUT UP BARRIERS WITH THIS CITY OR PICO RIVERA SUFFICIENT TO COVER THE COST OF THIS TRAFFIC CONTROL.

NO CONNECTIONS FOR THE DISPOSAL OF INDUSTRIAL WASTES SHALL BE MADE TO SEWERS SHOWN ON THESE DRAWINGS WITHOUT WRITTEN PERMISSION FROM THE CHIEF ENGINEER AND GENERAL MANAGER OF THE COUNTY SANITATION DISTRICTS.

COLLECT CHARGES AS INDICATED
E. W. Smith

APPROVED *P.C. Kramer 11-3-65*
 DIRECTOR OF PUBLIC WORKS
 CITY OF PICO RIVERA

PROFILE ALIGNMENT AND GRADE OF P.C. 7451 SANITARY SEWERS PAGE 1

TO BE CONSTRUCTED IN
TRACT No 23793

PRIVATE CONTRACT NO. 7451

W.S. 36
 3 SHEETS, 5 PAGES
 SCALE: HORIZ. 1"=40' VERT. 1"=4'
 OCTOBER, 1965

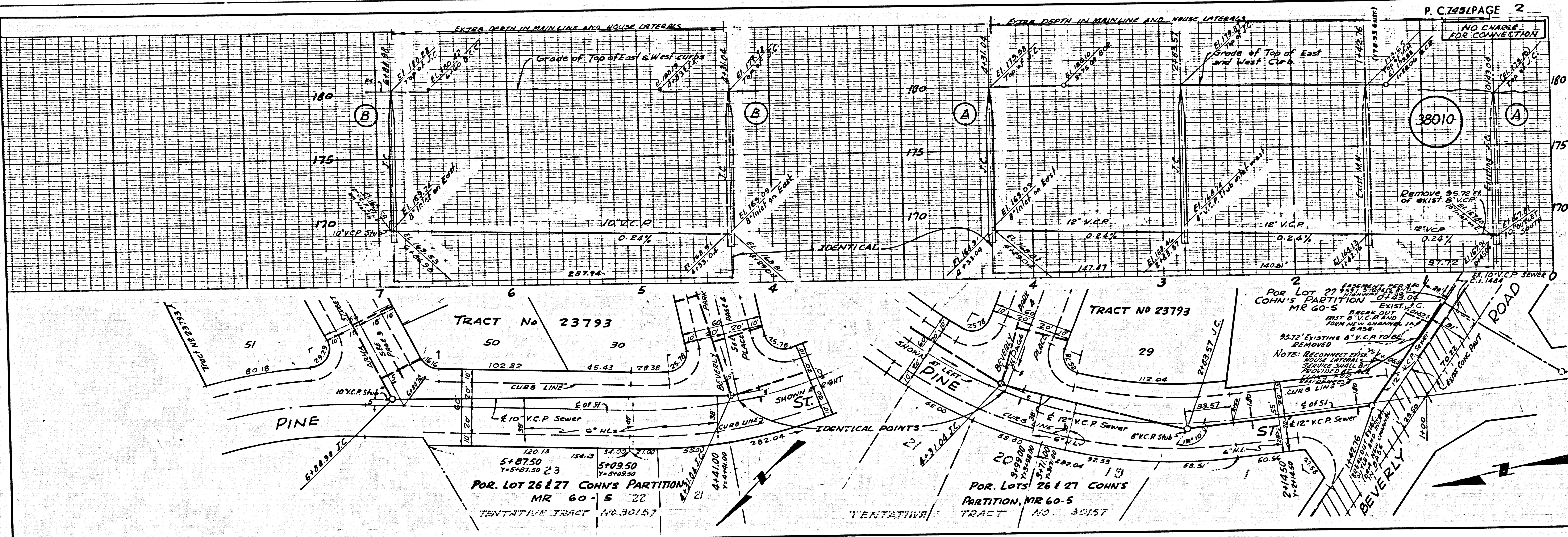
PREPARED IN THE OFFICES OF
 TECHNOLOGICAL ENGINEERING CORPORATION
 4321 DUFFEE AVE., PICO RIVERA, CALIF.
G.A. Patterson
 REG. C. E. NO. 10410

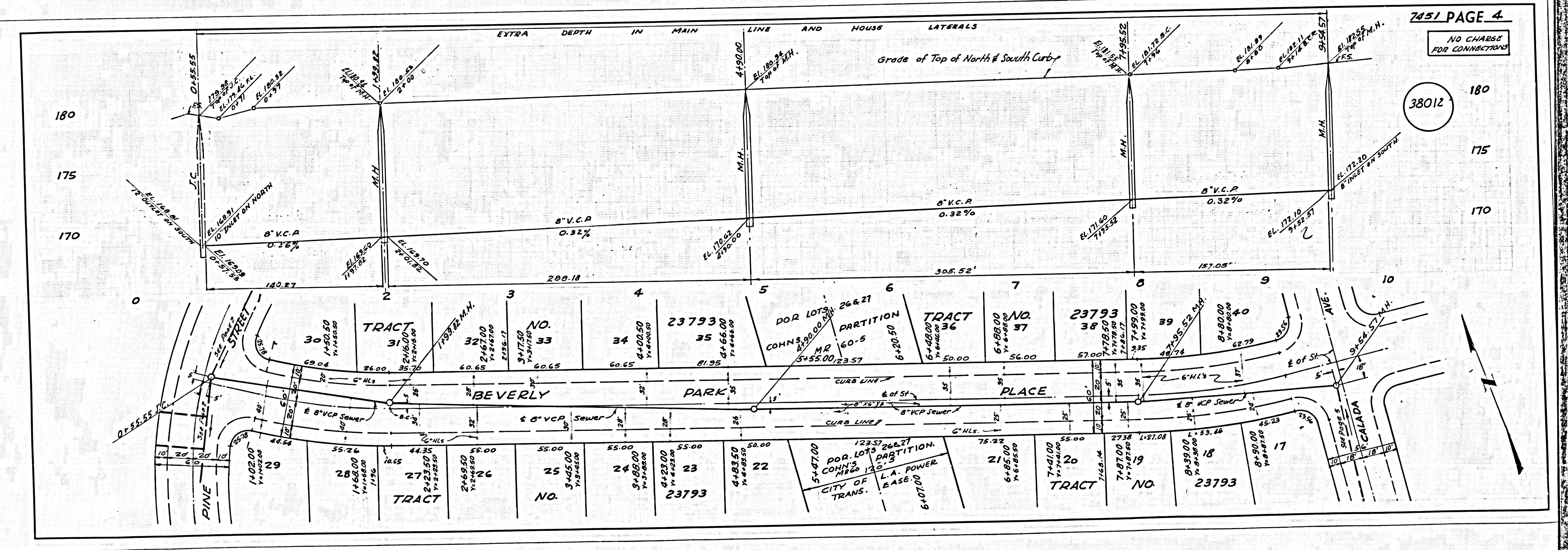
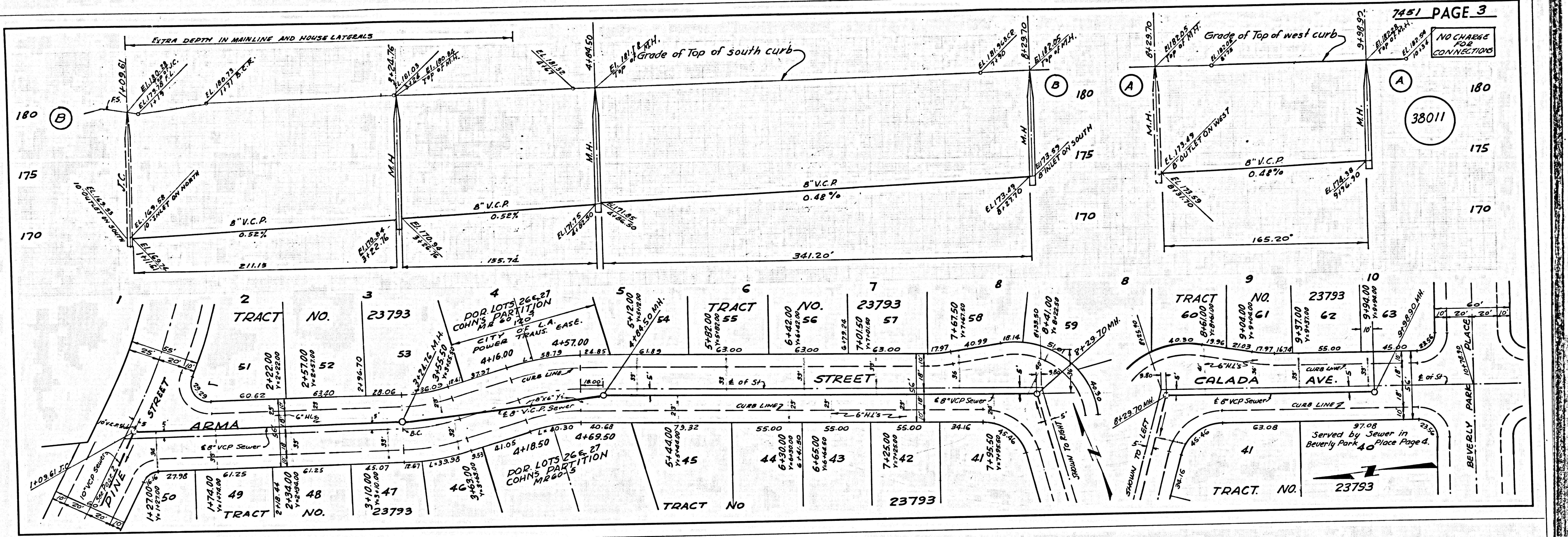
FOR LEGEND SEE PLAN NO. S-1

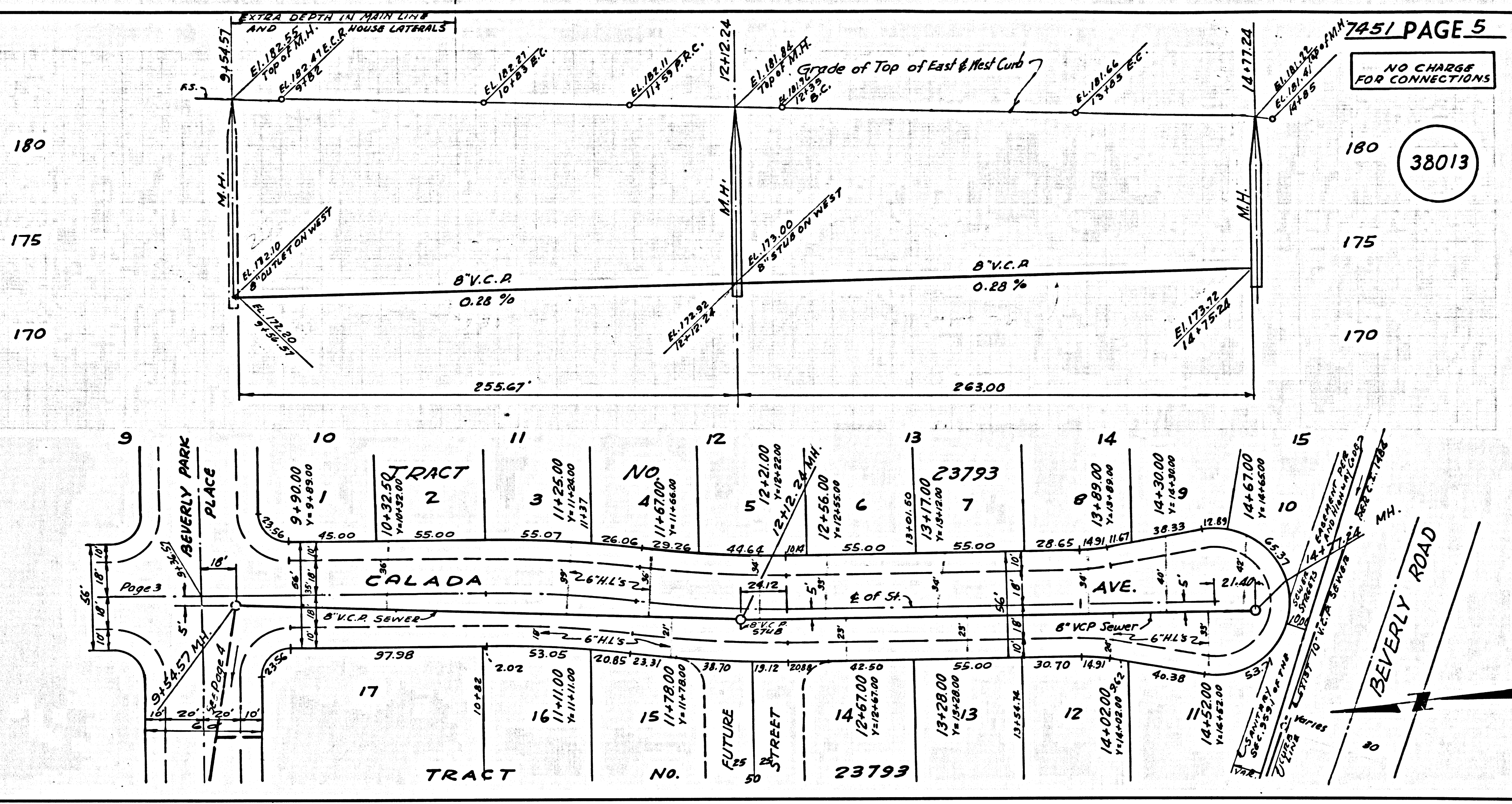
NOTE:
 GRADES TO WHICH THIS IMPROVEMENT IS TO BE CONSTRUCTED ARE SHOWN ON PLANS AND PROFILES. GRADE POINTS FOR TOP OF CURBS, CENTER LINE OF STREETS, OR CENTER LINE OF ALLEYS ARE SHOWN BY CIRCLES ON PROFILES AT ALL POINTS BETWEEN DESIGNATED POINTS. THE GRADE SHALL BE ESTABLISHED TO AS TO CONFORM TO A STRAIGHT LINE BETWEEN SAID DESIGNATED POINTS. ELEVATIONS ARE IN FEET ABOVE U.S.C. & G.S. SEA LEVEL DATUM OF 1929. THIS DRAWING AND THE DATA HEREON ARE HEREBY MADE A PART OF THE SPECIFICATIONS. WORK SHALL BE CONSTRUCTED ACCORDING TO STANDARD SPECIFICATIONS DATED MAY 25, 1962, ON FILE IN THE OFFICE OF THE COUNTY ENGINEER AND SHALL BE PROSECUTED ONLY IN THE PRESENCE OF THE CITY ENGINEER. BEFORE WORK CAN BE STARTED, THE CONTRACTOR MUST OBTAIN A PERMIT TO EXCAVATE IN CITY STREETS FROM THE L.A. COUNTY ROAD DIST. DISTRICT OFFICE NO. 4 AND MAKE A DEPOSIT WITH THE CITY OF PICO RIVERA, CIVIL ENGINEER, SUFFICIENT TO COVER THE COST OF CONSTRUCTION, INSPECTION AND ERECTION OF A SIGN. APPROVAL OF THIS PLAN BY THE CITY OF PICO RIVERA DOES NOT CONSTITUTE A REPRESENTATION AS TO THE ACCURACY OF THE LOCATION OF OR THE EXISTENCE OR NON-EXISTENCE OF ANY UNDERGROUND UTILITY PIPE, OR STRUCTURE WITHIN THE LIMITS OF THE PROJECT. THIS NOTE APPLIES TO ALL PAGES. IF WORK IS TO BE DONE IN A STATE HIGHWAY, A PERMIT MUST BE OBTAINED FROM THE STATE OF CALIFORNIA, DIVISION OF HIGHWAYS, 126 SOUTH SPRING STREET, LOS ANGELES, CALIFORNIA.

CITY OF PICO RIVERA, CALIFORNIA
 JOHN A. LAMBE, CITY ENGINEER J. D. PARKHURST, CHIEF ENGINEER
 CO. SANITARY DIST. 22
 APPROVED BY *P. Kramer* ASSISTANT SANITATION ENGINEER APPROVED BY *J. D. Parkhurst* OFFICE ENGINEER

SUBMITTED BY *John L. Estlin*
 LOS CERRITOS SPECIAL ENGINEER RCE 3871
 CHECKED BY *W. J. ...*
 REG. C.E. NO. 24106







7451 PAGE 5

NO CHARGE FOR CONNECTIONS

38013

PAGE