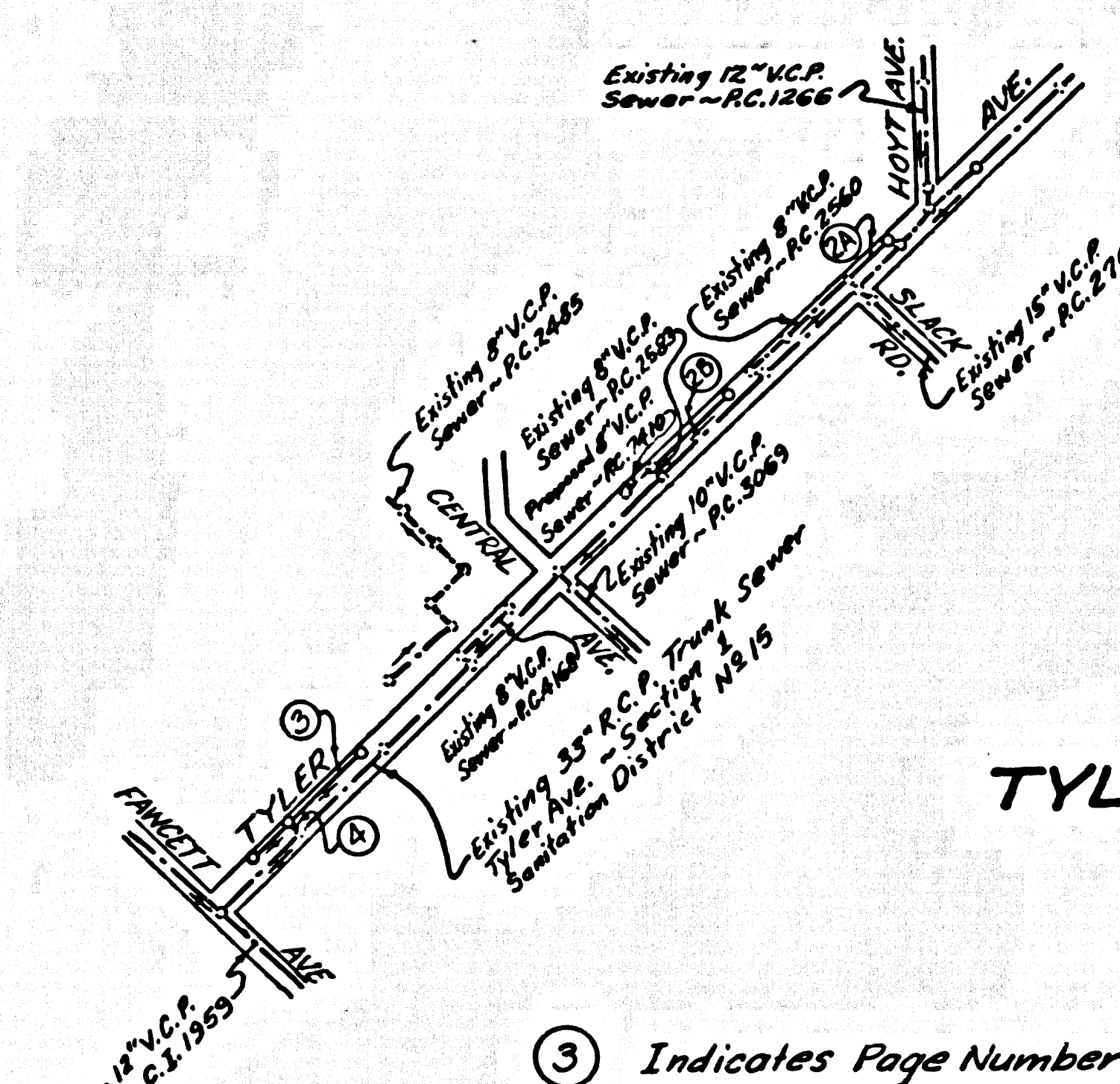


SOUTH EL MONTE BUILDING DISTRICT No. 5.04

B.M. BY 6259 ELEV. 231.271
 Co. Engr. B.M. Mon. in
 Well 9" Dia. N. Int. Fawcett Ave. &
 Tyler Ave. 11/8 S/E 5/8 W 1/4 E. Int.
 MKD (BM 14-3) WHITTIER 1965



INDEX MAP
 TYLER AVE. P.C. 7454
 Scale: 1"=600'

③ Indicates Page Number

USE EXTRA STRENGTH PIPE. ALL PIPE IS STANDARD DEPTH EXCEPT AS NOTED.
 USE MECHANICAL COMPRESSION JOINTS FOR ALL VITRIFIED CLAY PIPE SEWERS.
 ALL STRUCTURES SHALL BE BRICK MANHOLES, EXCEPT AS NOTED.
 USE STANDARD MANHOLE FRAMES AND COVERS, EXCEPT AS NOTED.
 USE FORMULA NO. 2, SEC. 54 OF SPECIFICATIONS TO COMPUTE ALLOWABLE LEAKAGE.
 CONSTRUCT HOUSE-SERVICES WITH INVERTS AT PROPERTY LINE 4 FEET BELOW CURB GRADE, OR GRADE OF CENTER LINE OF STREET, WHICHEVER IS HIGHER.
 FIGURES IN CIRCLES AT ENDS OF HOUSE LATERALS INDICATE DEPTH BELOW CURB GRADE, OR GRADE OF CENTER LINE OF STREET.
 FIGURES IN CIRCLES AT ENDS OF HOUSE LATERALS INDICATE HOUSE LATERALS SHALL BE CONSTRUCTED WITH 1/4" RISE PER FOOT TO PROPERTY LINE.
 WORDS IN CIRCLES AT ENDS OF HOUSE LATERALS INDICATE Y'S SHALL BE LAMB HORIZONTAL AND HOUSE LATERALS SHALL BE CONSTRUCTED WITH 1/4" RISE PER FOOT TO PROPERTY LINE.
 ALL HOUSE LATERALS SHALL BE CONSTRUCTED IN A STRAIGHT ALIGNMENT AT RIGHT ANGLES FROM THE MAIN LINE SEWER EXCEPT AS SHOWN ON THE PLANS. HOUSE LATERALS FROM CHIMNEYS SHALL NOT HAVE AN ANGLE OF LESS THAN 45 DEGREE WITH THE MAIN LINE SEWER.
 THE CONTRACTOR SHALL NOTIFY THE CONSTRUCTION DIVISION BY TELEPHONE MADISON 9-0747, EXT. 8151 AT LEAST 24 HOURS BEFORE STARTING ANY WORK UNDER THIS CONTRACT.
 CONSTRUCTION IN STATE HIGHWAYS SHALL CONFORM WITH STATE HIGHWAY PERMIT AND THE CONTRACTOR SHALL PAY ALL COSTS IN CONNECTION THEREWITH.
 ALL STATE AND LOCAL TRENCH SAFETY ORDERS WILL BE RIGIDLY ENFORCED.
 RESURFACING SCHEDULE: RESURFACE TRENCH WITHIN PAVED AREA WITH PREMIUM ROCE AND ON _____ INCHES IN THICKNESS ON _____ INCHES OF AGGREGATE BASE MATERIALS, EXCEPT AS NOTED BELOW.

PAGE NO.	STREET	STATION LIMITS		TYPE OF RESURFACING
		FROM	TO	

TRENCH, WITHIN PAVED AREA ONLY, TO BE RESURFACED WITH TEMPORARY RESURFACING PER SECTION 68 OF STANDARD SPECIFICATIONS.

ALL CONCRETE CROSS GUTTERS, CURBS, GUTTERS, PAVEMENT, AND DRIVEWAYS SHALL BE TYPHOLED OR JACKED PER LOS ANGELES COUNTY ROAD DEPARTMENT REQUIREMENTS.
 THE FOLLOWING LATEST REVISED STANDARD PLANS ON FILE IN THE OFFICE OF CITY ENGINEER SHALL APPLY IN THE CONSTRUCTION OF THIS PROJECT:

MINIMUM EXCAVATION SAFETY REQUIREMENTS	5-1
BRICK MANHOLE	5-2
MANHOLE FRAME AND COVER	5-3
MANHOLE STEP	5-4
BEDDING FOR SEWER PIPE	5-5
SPECIAL SUPPORT AND PROTECTION	5-6
CRACKING AND INCASEMENT	5-7
STANDARD WYE SUPPORT	5-8
STOPPER	5-9

- THE UNDERGROUND UTILITY COMPANIES WITHIN THE LIMITS OF THIS PROJECT ARE AS FOLLOWS:
- Southern Counties Gas Co.
 - San Gabriel Valley Water Co.
 - Pacific Telephone

NO CONNECTIONS FOR THE DISPOSAL OF INDUSTRIAL WASTES SHALL BE MADE TO SEWERS SHOWN ON THESE DRAWINGS WITHOUT WRITTEN PERMISSION FROM THE CHIEF ENGINEER AND GENERAL MANAGER OF THE COUNTY SANITATION DISTRICTS.

CASH CONTRACT No 41394
 PRIVATE CONTRACT NO. 7454

PROFILE, ALIGNMENT AND GRADE OF
 SANITARY SEWERS

TO BE CONSTRUCTED IN
 TYLER AVENUE
 AND OTHER RIGHTS OF WAY

2 SHEETS, 4 PAGES

SCALE VERT. 1"=2'-0"
 HORIZ. 1"=40'-0"

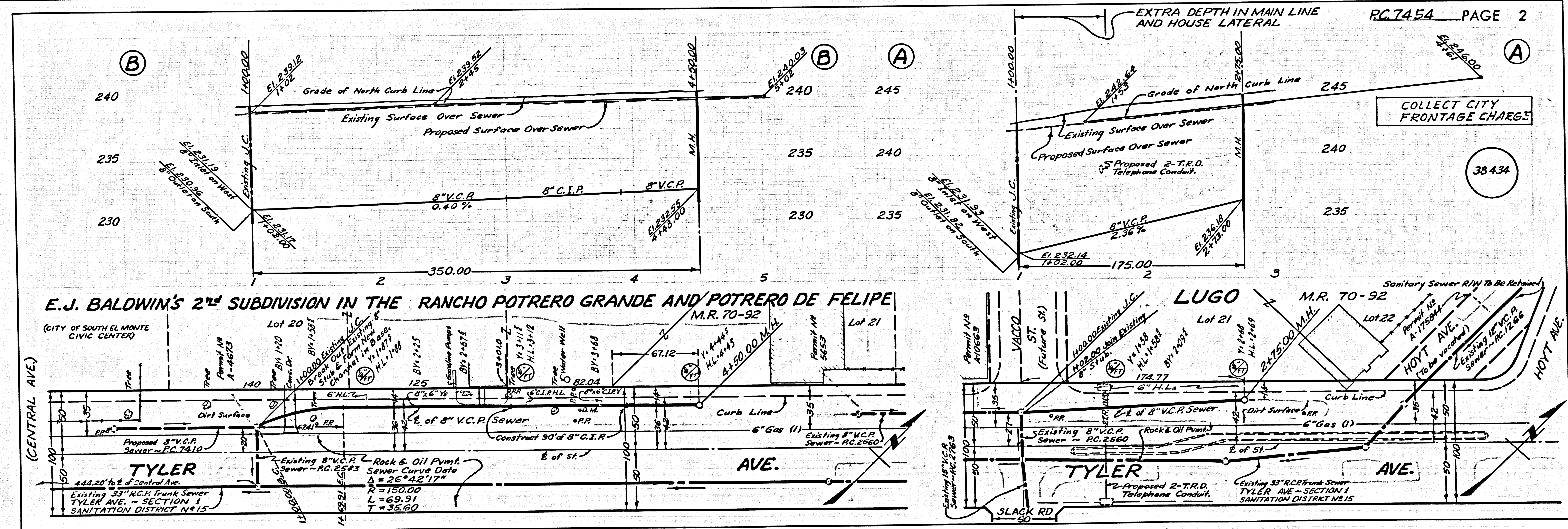
NOVEMBER 1965

CITY OF SOUTH EL MONTE, CALIFORNIA

JOHN A. LAMBIE CITY ENGINEER
 APPROVED BY *J. D. Parkhurst* J. D. PARKHURST
 CHIEF ENGINEER OF COUNTY SANITATION DISTRICT NO. 15
 RECOMMENDED BY *Robert M. Young* ROBERT M. YOUNG REGIONAL ENGINEER
 DESIGNED BY *J. A. Lambie* J. A. LAMBIE REGIONAL ENGINEER
 REG. C. E. NO. 7882

NOTES:
 WORK SHALL BE CONSTRUCTED ACCORDING TO STANDARD SPECIFICATIONS DATED MAY 25, 1962 ON FILE IN THE OFFICE OF THE CITY ENGINEER AND SHALL BE PROTECTED ONLY IN THE PRESENCE OF THE CITY ENGINEER.
 GRADES TO WHICH THIS IMPROVEMENT IS TO BE CONSTRUCTED ARE SHOWN ON PLANS AND PROFILES. GRADE POINTS FOR TOP OF CURB, CENTER LINE OF STREET OR CENTER LINE OF ALLEY ARE SHOWN BY CIRCLES ON PROFILES AT ALL POINTS BETWEEN DESIGNATED POINTS THE GRADE SHALL BE ESTABLISHED SO AS TO CONFORM TO A STRAIGHT LINE DRAWN BETWEEN SAID DESIGNATED POINTS.
 ELEVATIONS ARE IN FEET ABOVE U.S.C. & G.S. SEA LEVEL DATUM OF 1929.
 UNIT PRICES FOR ADDITIONAL WORK WHICH MAY BE REQUIRED BUT WHICH CANNOT BE ASCERTAINED IN ADVANCE, SHALL BE SUBMITTED IN THE PROPOSAL.
 THIS DRAWING AND THE DATA HEREON ARE HEREBY MADE A PART OF THE SPECIFICATIONS.

LAYOUT	JAIMIE	NOV. 1965	UNDERGROUND	R.W. Scall	11-25-65
TRACED	JAIMIE	NOV. 1965	BENCH MARKS	J. W. Warrigan	11-26-65
CHECKED	YOUNGDAHL	NOV. 1965	MAINTENANCE		
F. B. 2198			INSPECTOR		
A. B. 8116		W. S. 37	RECORD PLANS		



38434

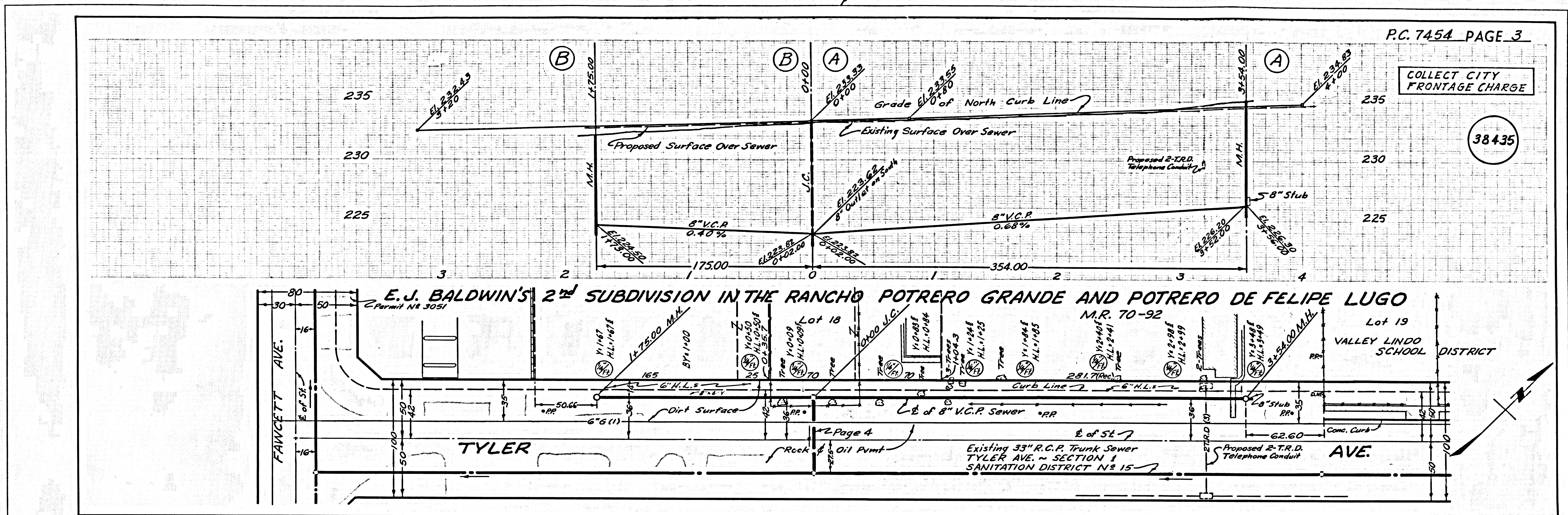
J.N. 3384-31

4257 29

31A 93517

Trim Line

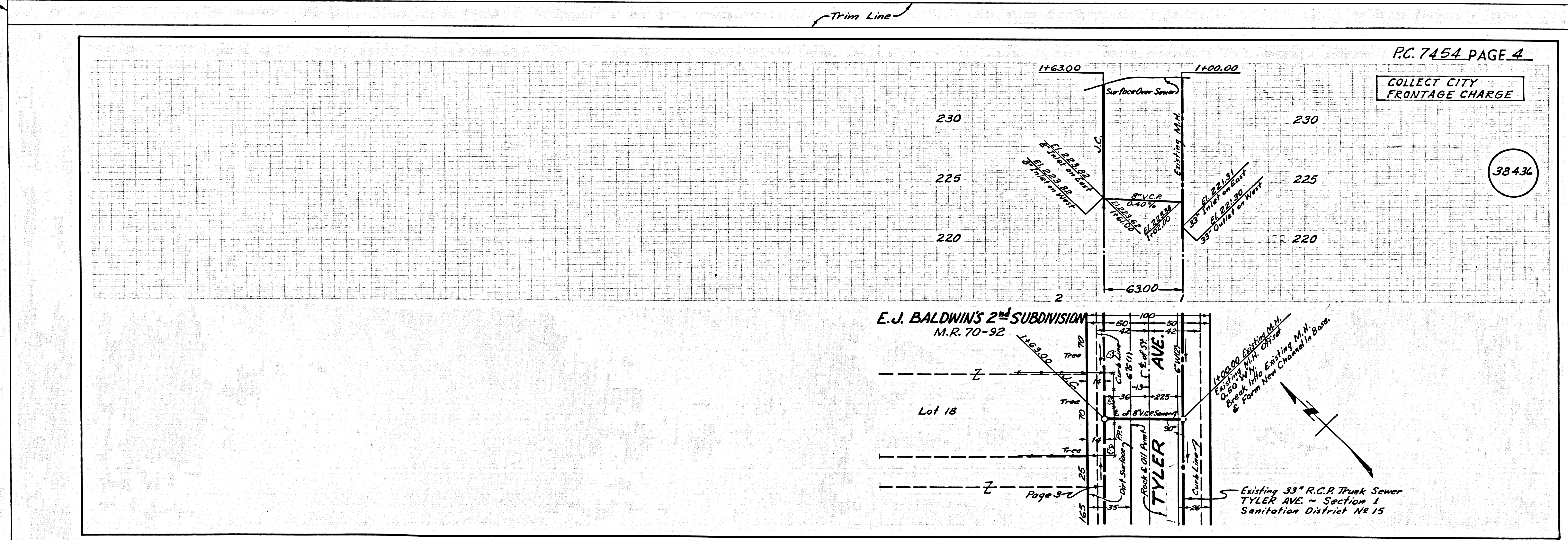
23292 3 2 4 70 4 2 3 23294



4257 29
31A 93517

Trim Line

23292 3 2 4 70 4 2 3 23294



Trim Line

23292 3 2 4 70 4 2 3 23294

SOUTH EL MONTE BUILDING DISTRICT No. 5.04

B.M. BY 6259 ELEV 231.271
 Co. Engr. B.M. Mon. in
 Wall 9" Dr. Int. Fawcett Ave. &
 Tyler Ave. 117' 5 1/2' W. W. & Int.
 MKD (BM 14-3) WHITTIER 1965

CASH CONTRACT No 41394
 PRIVATE CONTRACT NO. 7454

PROFILE, ALIGNMENT AND GRADE OF
 SANITARY SEWERS
 TO BE CONSTRUCTED IN
 TYLER AVENUE
 AND OTHER RIGHTS OF WAY

38433

2 SHEETS, 4 PAGES

NOVEMBER 1965

CITY OF SOUTH EL MONTE, CALIFORNIA

JOHN A. LAMBIE CITY ENGINEER

APPROVED BY *J. D. Parkhurst*

J. D. PARKHURST
 CITY ENGINEER OF COUNTY
 SANITATION DISTRICT NO. 15

RECOMMENDED BY *Robert J. Young*

APPROVED BY *Robert J. Young*
 REGIONAL ENGINEER

DESIGNED BY *John A. Lambie*
 REG. C.E. NO. 7822

NOTES:
 WORK SHALL BE CONSTRUCTED ACCORDING TO STANDARD SPECIFICATIONS DATED MAY 25, 1962 ON FILE IN THE OFFICE OF THE CITY ENGINEER AND SHALL BE PROSECUTED ONLY IN THE PRESENCE OF THE CITY ENGINEER.
 GRADES TO WHICH THIS IMPROVEMENT IS TO BE CONSTRUCTED ARE SHOWN ON PLANS AND PROFILE GRADE POINTS FOR TOP OF CURB, CENTER LINE OF STREET OR CENTER LINE OF ALLEY ARE SHOWN BY CIRCLES ON PROFILES. ALL POINTS BETWEEN DESIGNATED POINTS THE GRADE SHALL BE ESTABLISHED AS TO CONFORM TO A STRAIGHT LINE DRAWN BETWEEN SAID DESIGNATED POINTS.
 ELEVATIONS ARE IN FEET ABOVE U.S.C. & G.S. SEA LEVEL DATUM OF 1929.
 UNIT PRICES FOR ADDITIONAL WORK WHICH MAY BE REQUIRED BUT WHICH CANNOT BE ASCERTAINED IN ADVANCE, SHALL BE SUBMITTED IN THE PROPOSAL.
 THIS DRAWING AND THE DATA HEREON ARE HEREBY MADE A PART OF THE SPECIFICATIONS.

LAYOUT	JAIME	NOV. 1965	UNDERGROUND	<i>J.W. Scott</i>	11-20-65
TRACED	JAIME	NOV. 1965	BENCH MARKS	<i>J. Leavitt</i>	11-26-65
CHECKED	YOUNGDAHL	NOV. 1965	MAINTENANCE		
F. B. 2198			INSPECTOR		
A. B. 8116			W. S. 37	RECORD PLANS	

USE EXTRA STRENGTH PIPE, ALL PIPE IS STANDARD DRYPIPE EXCEPT AS NOTED.
 USE MECHANICAL COMPRESSION JOINTS FOR ALL VERIFIED CLAY PIPE SEWERS.
 ALL STRUCTURES SHALL BE BRICK MANHOLES, EXCEPT AS NOTED.
 USE STANDARD MANHOLE FRAMES AND COVERS, EXCEPT AS NOTED.
 USE FORMER NO. 2, INC. 514 OF SPECIFICATIONS TO COMPUTE ALLOWABLE LEAKAGE.
 CONSTRUCT HOUSE-DRAINING WITH SLOPES AS INDICATED AND A FREE SLOPE CURB GRADE, OR GRADE OF CENTER LINE OF STREET, EXCEPT AS NOTED.
 HOUSES BY CIRCLES AT ENDS OF HOUSE LATERALS INDICATE HOUSE LATERALS SHALL BE CONSTRUCTED WITH 1/4" RISE PER FOOT TO PROPERTY LINE.
 HOUSES BY CIRCLES AT ENDS OF HOUSE LATERALS INDICATE HOUSE LATERALS SHALL BE CONSTRUCTED WITH 1/4" RISE PER FOOT TO PROPERTY LINE.
 WORDS IN CIRCLES AT ENDS OF HOUSE LATERALS INDICATE HOUSE LATERALS SHALL BE Laid HORIZONTAL AND HOUSE LATERALS SHALL BE CONSTRUCTED WITH 1/4" RISE PER FOOT TO PROPERTY LINE.
 ALL HOUSE LATERALS SHALL BE CONSTRUCTED IN A STRAIGHT ALIGNMENT AT RIGHT ANGLES FROM THE MAIN LINE SEWER EXCEPT AS SHOWN ON THE PLANS. HOUSE LATERALS FROM CHIMNEYS SHALL NOT HAVE AN ANGLE OF LESS THAN 45 DEGREES WITH THE MAIN LINE SEWER.
 THE CONTRACTOR SHALL NOTIFY THE CONSTRUCTION DIVISION BY TELEPHONE MADISON 9-4707, EXT. 81581 AT LEAST 24 HOURS BEFORE STARTING ANY WORK UNDER THIS CONTRACT.
 CONSTRUCTION IN STATE HIGHWAYS SHALL CONFORM WITH STATE HIGHWAY PERMIT AND THE CONTRACTOR SHALL PAY ALL COSTS IN CONNECTION THEREWITH.
 ALL STATE AND LOCAL TRAFFIC SAFETY ORDERS WILL BE RIGIDLY ENFORCED.
 RESURFACING SCHEDULE: RESURFACE TRENCH SAFETY AREA WITH PREMIUM ROCK AND ON _____ INCHES IN THICKNESS ON _____ INCHES OF AGGREGATE BASE MATERIALS EXCEPT AS NOTED BELOW.

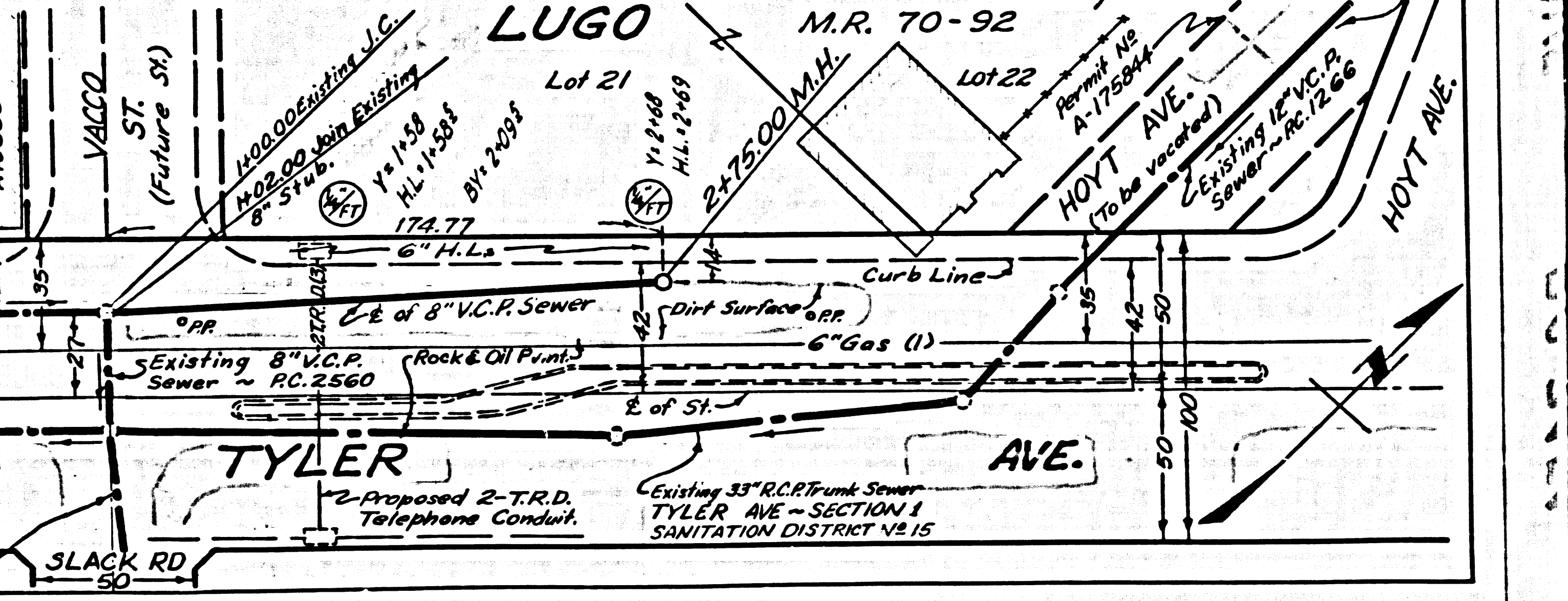
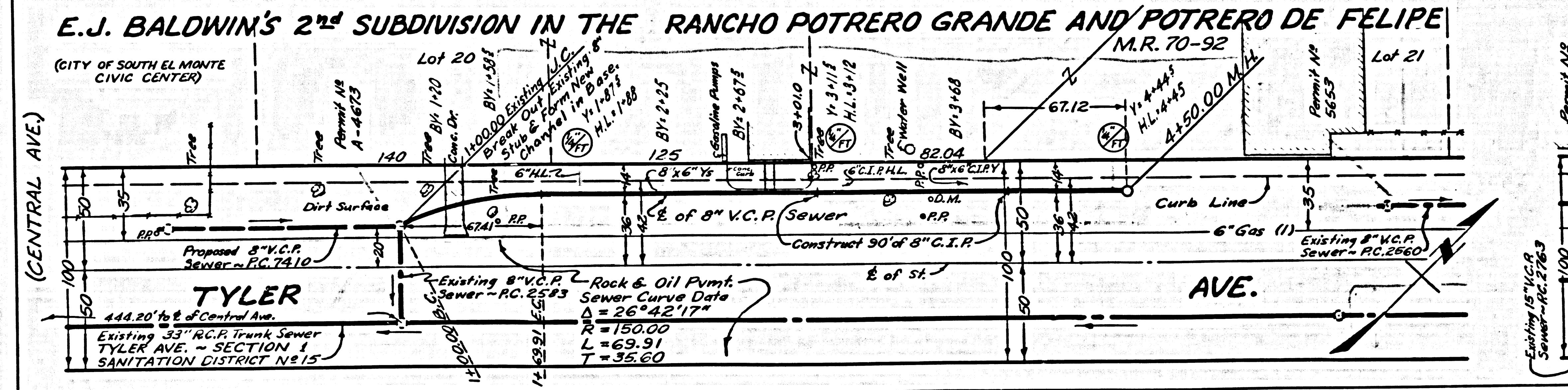
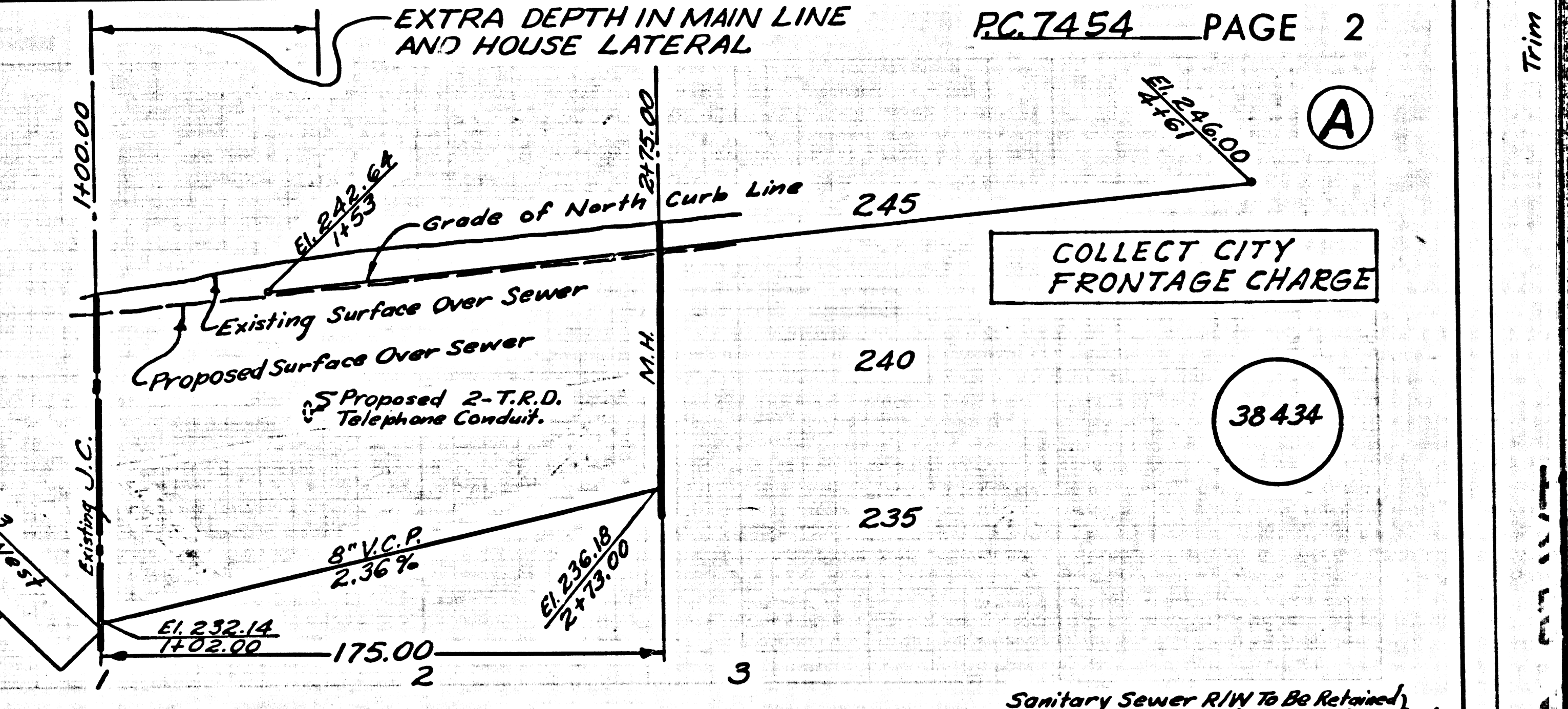
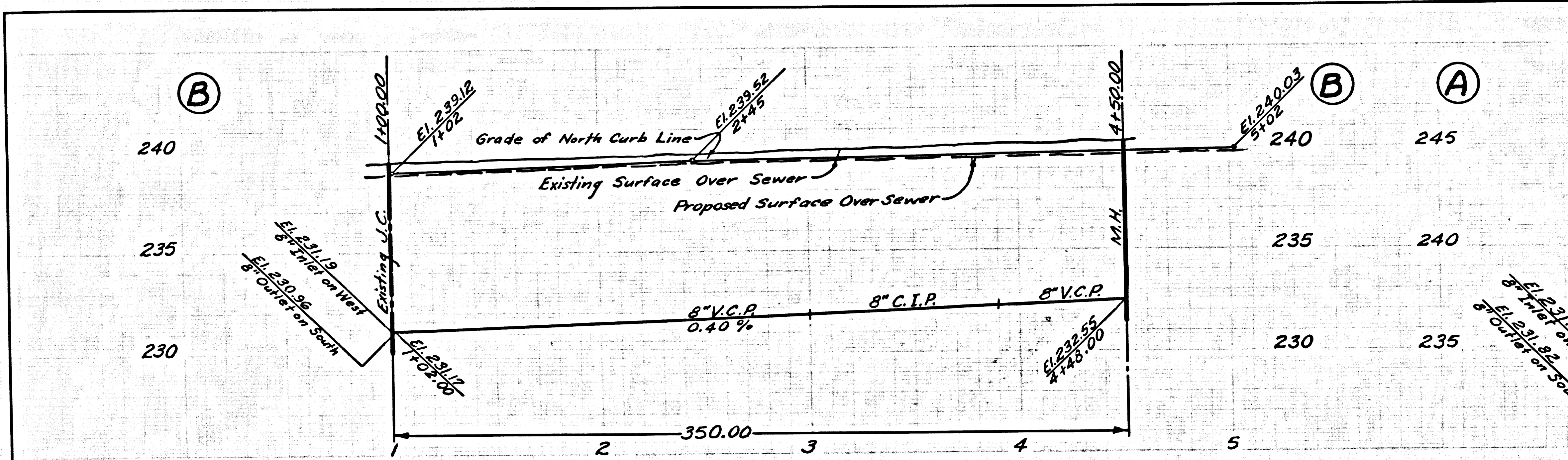
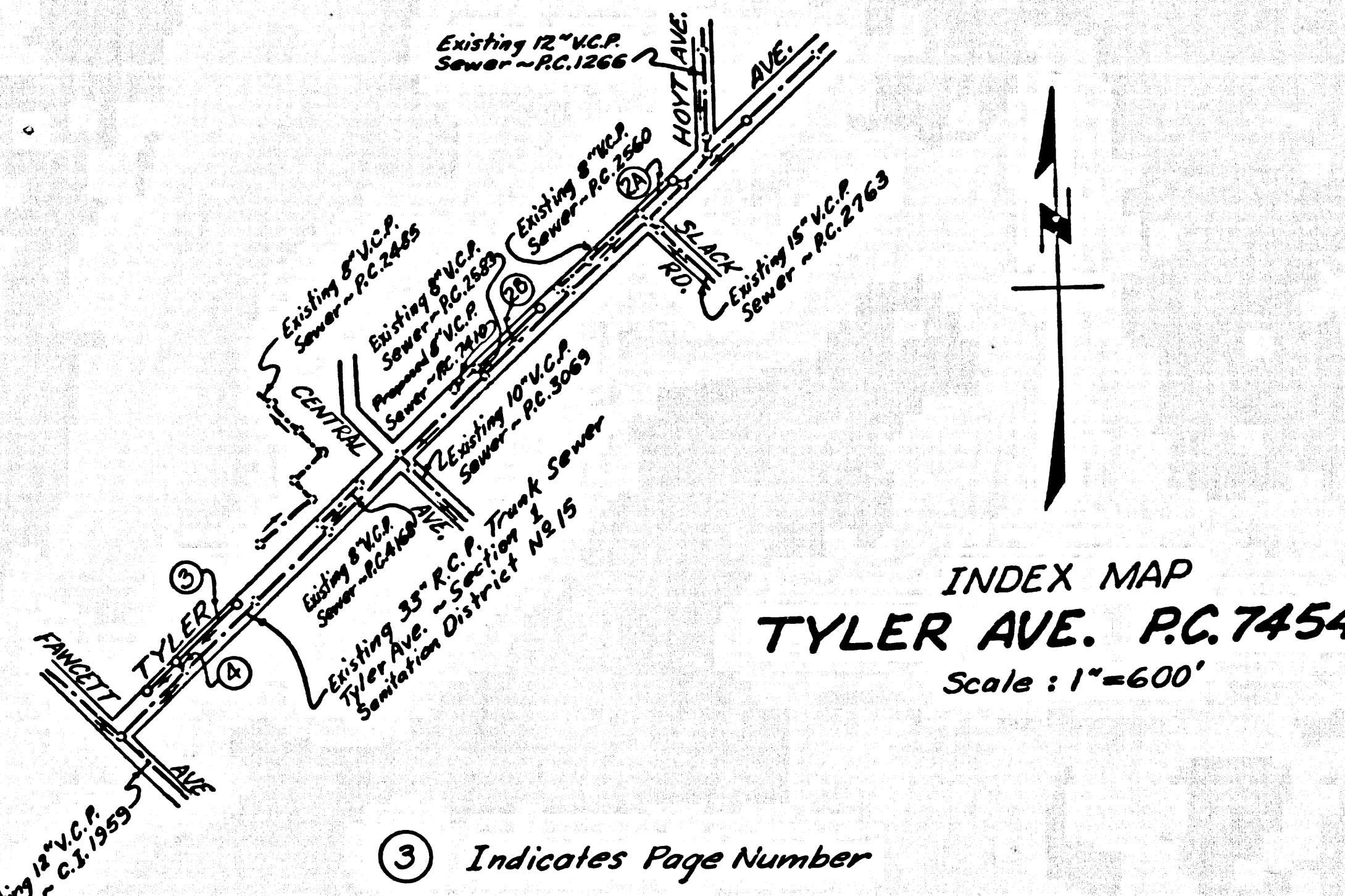
PAGE NO.	STREET	STATION LIMITS	TO	TYPE OF RESURFACING

TRENCH, WITHIN PAVED AREA ONLY, TO BE RESURFACED WITH TEMPORARY RESURFACING PER SECTION 6B OF STANDARD SPECIFICATIONS.

ALL CONCRETE CROSS CUTTERS, CURBS, GUTTERS, PAVEMENT, AND DRIVEWAYS SHALL BE TUNNELED OR JACKED PER LOS ANGELES COUNTY ROAD DEPARTMENT REQUIREMENTS.
 THE FOLLOWING LATEST REVISED STANDARD PLANS ON FILE IN THE OFFICE OF CITY ENGINEER SHALL APPLY IN THE CONSTRUCTION OF THIS PROJECT:

- LEGEND
- MINIMUM EXCAVATION SAFETY REQUIREMENTS 5-1
- BRICK MANHOLE 5-2
- MANHOLE FRAME AND COVER 5-3
- MANHOLE TRIP 5-7
- BEDDING FOR SEWER PIPE 5-31
- SPECIAL SUPPORT AND PROTECTION 5-32
- CRADING AND ENCASEMENT 5-33
- STANDARD WYE SUPPORT 5-34
- STOPPER 5-30

THE UNDERGROUND UTILITY COMPANIES WITHIN THE LIMITS OF THIS PROJECT ARE AS FOLLOWS:
 (1) Southern Counties Gas Co.
 (2) San Gabriel Valley Water Co.
 (3) Pacific Telephone
 NO CONNECTIONS FOR THE DISPOSAL OF INDUSTRIAL WASTES SHALL BE MADE TO SEWERS SHOWN ON THESE DRAWINGS WITHOUT WRITTEN PERMISSION FROM THE CHIEF ENGINEER AND GENERAL MANAGER OF THE COUNTY SANITATION DISTRICT NO. 15.

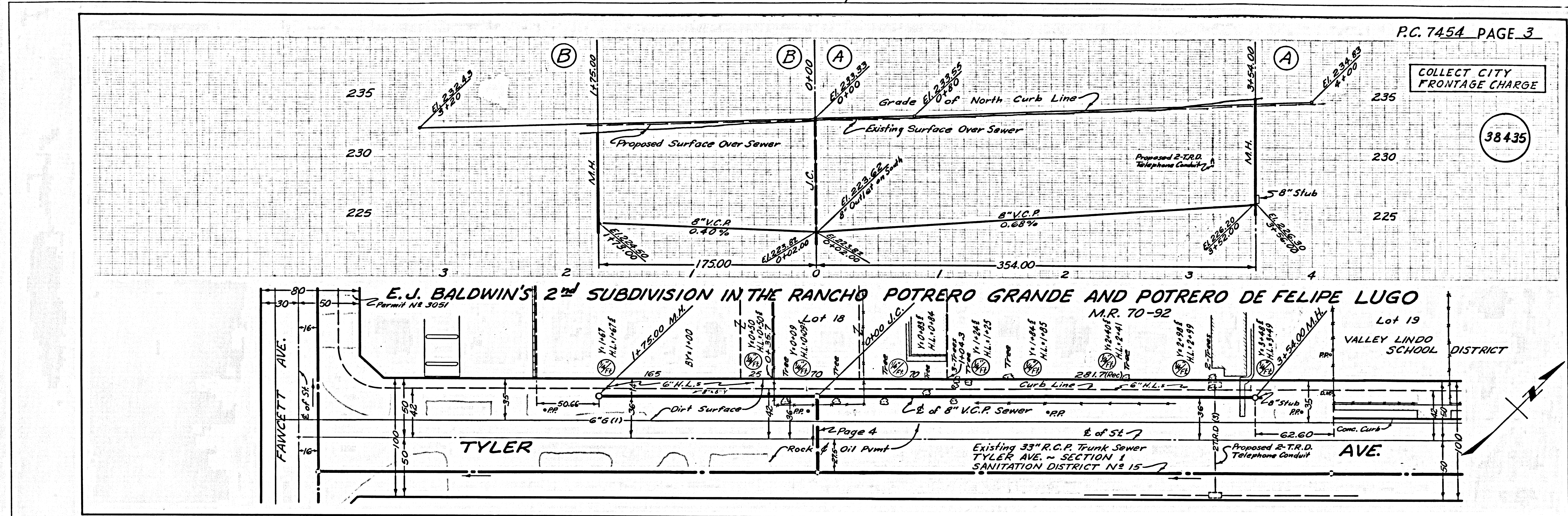


F.B. 2198 "X" Sect. : 203-206

J.N. 3384.31

PC 7454

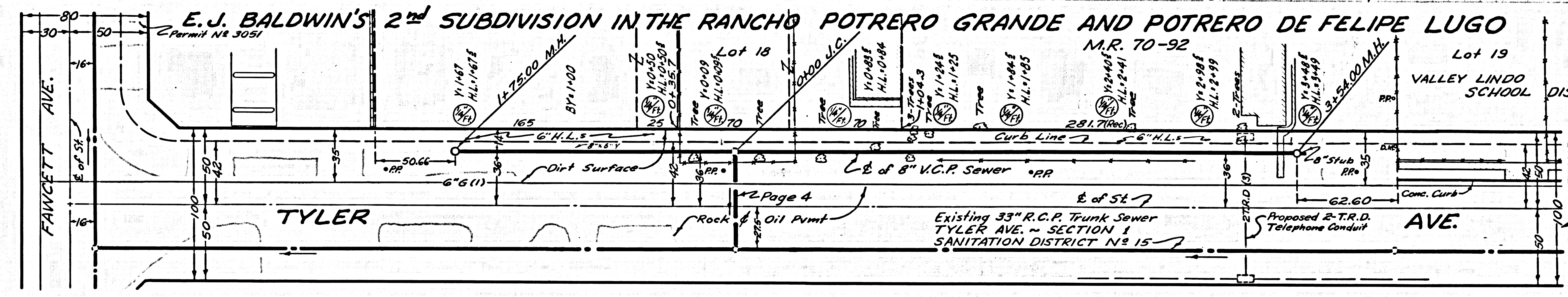
TYLER AVE



PC. 7454 PAGE 3

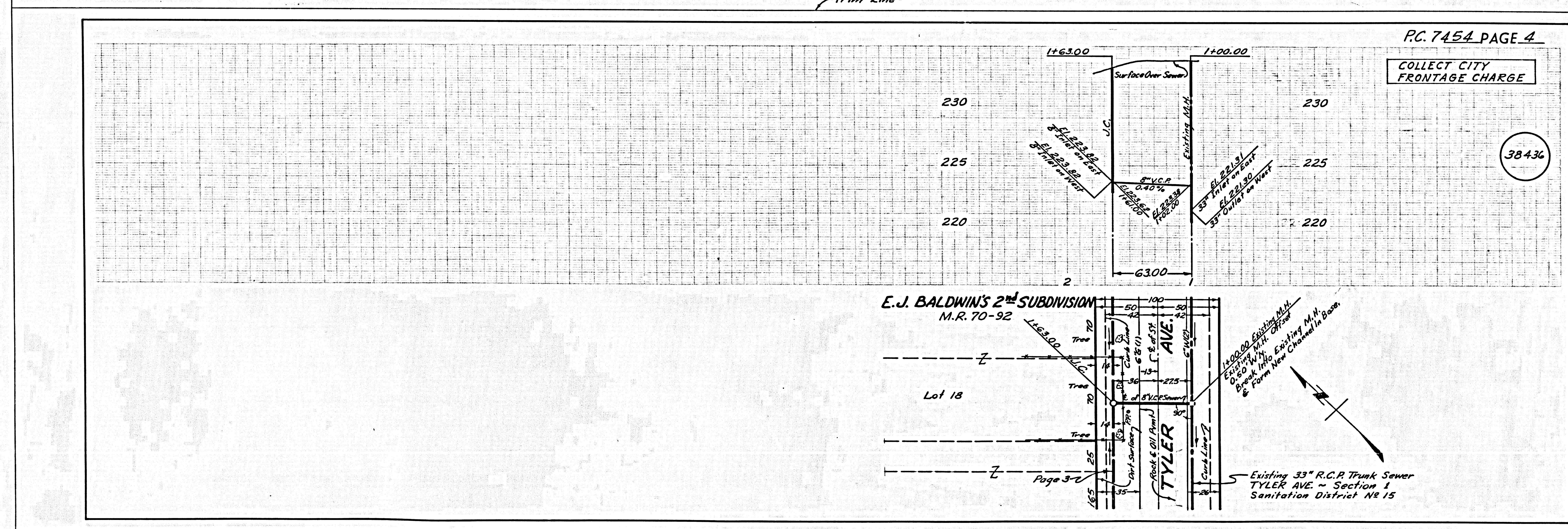
COLLECT CITY FRONTAGE CHARGE

38435



Trim Line

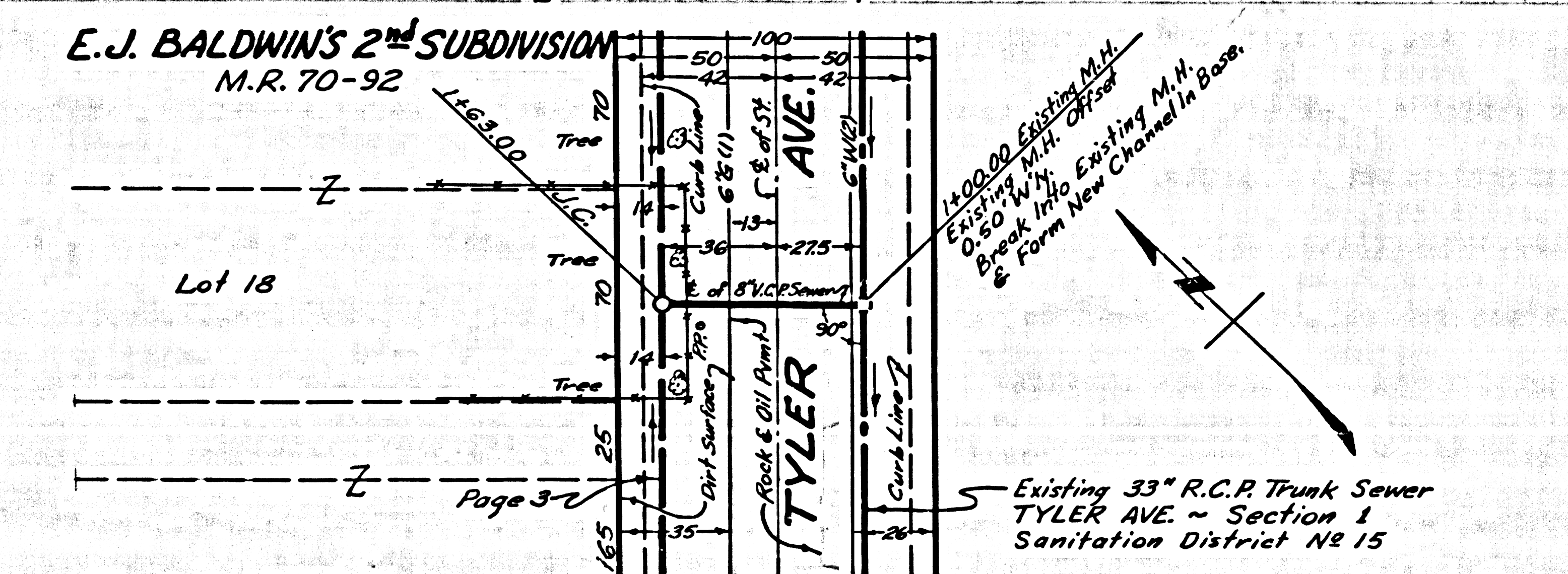
PC 7454



PC. 7454 PAGE 4

COLLECT CITY FRONTAGE CHARGE

38436



Trim Line

F.B. 2198 "X" Sect. : 204
Road Dept. F.B. 585 Topo : 7-10

TYLER AVE

TYLER AVE

PC 7454

