

B.M. # 0800090 ELEV 583.299
 CITY OF LOS ANGELES PRECISE B.M. # 0800090
 SPK. IN S.O. C.B. OF NORTH FWY SERVICE ROAD
 (HOLLYWOOD FWY) 37 FT. HD. CURB RETURN
 TO LAWRENCE BLVD. AT WEST END OF
 CATCH BASIN. ELEV 583.299.

(DOUBLE SCALE)
 HOLLYWOOD BLDG. DIST. NO. 9

PROFILE ALIGNMENT AND GRADE OF
 SANITARY SEWERS
 TO BE CONSTRUCTED IN

UNIVERSAL CITY LINE D
 PRIVATE CONTRACT NO. 7458

W.S. 54
 1 SHEETS, 2 PAGES
 SCALE: VERT. 1"=4' HORIZ. 1"=40' SEPT. 1965 375 04
 PREPARED IN THE OFFICES OF
 QUINTON ENGINEERS LTD.
 H. W. JONES
 REG. C.E. NO. 2422
 FOR LEGEND SEE PLAN NO. S-1

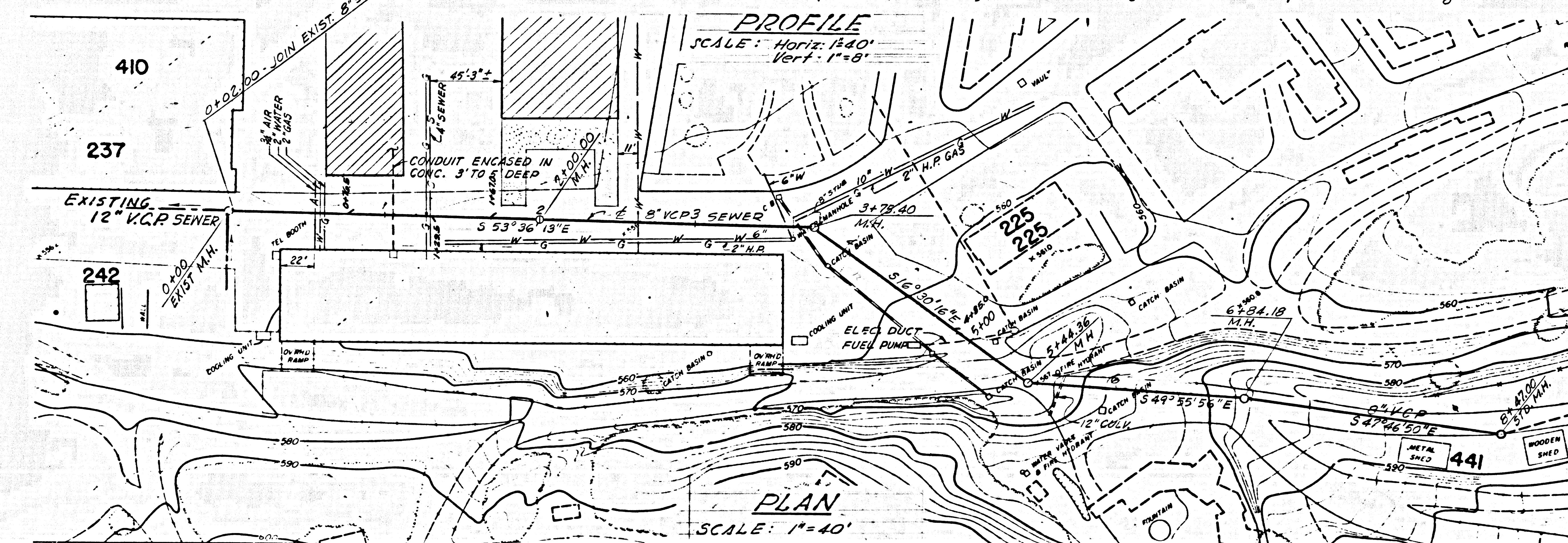
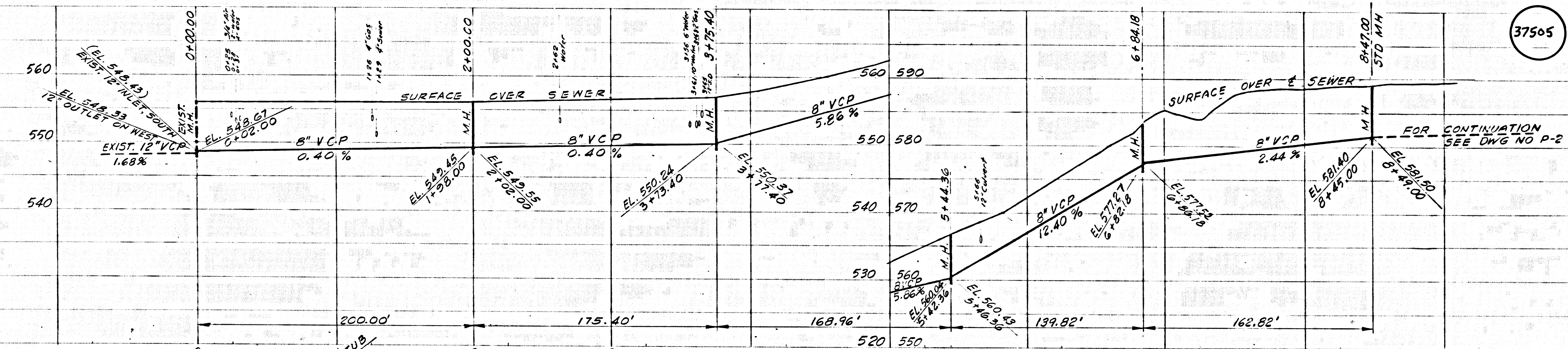
- PROVIDE STAKES ON THE PROPERTY LINE OR PROPERTY LINES PRODUCED AT RIGHT ANGLES TO THE SEWER LINE AT THE CENTER LINE OF EACH MANHOLE.
- NO REPRESENTATIVE OF THE COUNTY ENGINEER WILL SUPERVISE OR LAY OUT ANY PORTION OF THE WORK.
- THE PRIVATE ENGINEER SHALL FURNISH THE COUNTY ENGINEER WITH GRAB SHEETS AND STATIONING FOR ALL HOUSE LATERALS AND BRANCHES AND SHALL PROVIDE SLATES FOR THEM AT THEIR PROPER LOCATIONS WITH STATIONING PLAINLY MARKED. ALL HOUSE LATERALS SHALL BE CONSTRUCTED IN A STRAIGHT ALIGNMENT AT RIGHT ANGLES FROM THE MAIN LINE SEWER EXCEPT AS SHOWN ON CHANGE OR ALTERNATE SHEETS. FROM OWNERS' SHALL NOT HAVE AN ANGLE OF LESS THAN 45° WITH THE MAIN LINE SEWER. ANY CHANGE IN ALIGNMENT SHALL BE INDICATED BY THE PRIVATE ENGINEER.
- THE PRIVATE ENGINEER SHALL FURNISH THE HOUSE LATERAL DEPTH AT THE PROPERTY LINE BELOW THE TOP OF CURB ELEVATION FOR EACH HOUSE LATERAL ON THE GRADE SHEET.
- NO REVISIONS SHALL BE MADE IN THESE PLANS WITHOUT THE APPROVAL OF THE COUNTY ENGINEER.
- THE CONTRACTOR SHALL NOTIFY THE CONSTRUCTION DIVISION BY TELEPHONE, MAILBOX # 4747, EXT. 3838, AT LEAST TWENTY FOUR HOURS BEFORE STARTING ANY WORK UNDER THIS CONTRACT.
- MANHOLES SHALL BE BRICK SEWER STRUCTURES PER S-1. PRECAST CONCRETE MANHOLES PER S-1-5 OR S-1-6 MAY BE USED AS AN ALTERNATE IN LOCATIONS APPROVED BY THE COUNTY ENGINEER.
- USE STANDARD MANHOLE FRAMES AND COVERS, 5'-1/2" EXCEPT AS NOTED.
- MANHOLE TOPS IN UNIMPROVED AREAS TO BE SIX INCHES ABOVE FINISHED GRADE.
- USE EXTRA STRENGTH PIPE, AS PIPE IS STANDARD DEPTH EXCEPT AS NOTED.
- USE MECHANICAL COMPRESSION JOINTS FOR ALL V.C.P. JOINTS PER SPECS. SECT. 34 & 44 (44).
- WHEN EVER CANNING WATER IS ENCOUNTERED DURING THE CONSTRUCTION OF THE SEWERS, THE V.C.P. JOINTS SHALL BE OF JOINT COMPENSATION PER SPECS. SECT. 33 & 44, OR MECHANICAL COMPRESSION JOINTS PER SPECS. SEC. 34.
- IF A POWER POLE IS WITHIN THREE FEET OF THE SEWER, THE SEWER SHALL BE ENCASED PER S-23 TWO FEET ON EACH SIDE FROM THE POINT OF INTERFERENCE.
- IF DURING THE COURSE OF CONSTRUCTION IT IS DETERMINED THAT THERE IS LESS THAN FOUR FEET OF COVER OVER THE TOP OF A MAIN LINE OR HOUSE LATERAL V.C.P. SEWER WHICH IS NOT INDICATED ON THE PLANS, THE PIPE SHALL BE ENCASED PER S-23 UNLESS OTHERWISE APPROVED BY THE COUNTY ENGINEER.
- HOUSE LATERALS TO BE CONSTRUCTED WITH INVERTS AT PROPERTY LINE AS NOTED.
- BRICKWORK ALL FINISHED WITHIN FAYED AREAS TO MEET L.A. COUNTY ROAD DEPT. OR CALIFORNIA STATE HIGHWAY REQUIREMENTS BY ACCORDANCE WITH FINISH TABLE NO. 2 PER SPECS. SEC. 34.
- FOR ALLOWANCE STAGGAGE USE THE FORMULA NO. 2 PER SPECS. SEC. 34.
- ALL STATE & LOCAL TRENCH SAFETY ORDERS WILL BE RIGIDLY ENFORCED.
- TRENCH BACKFILL SHALL BE COMPACTED TO 90% RELATIVE DENSITY.
- PAVEMENT REPLACEMENT WILL BE BY OWNER.

NOTE: GRADES TO WHICH THIS IMPROVEMENT IS TO BE CONSTRUCTED ARE SHOWN ON PLANS AND PROFILES. GRADE POINTS FOR TOP OF CURB, CENTER LINE OF SEWER, OR CENTER LINE OF ALLEYS ARE SHOWN BY CIRCLES ON PROFILES AT ALL POINTS BETWEEN DESIGNATED POINTS. THE GRADE SHALL BE ESTABLISHED AS TO CONFORM TO A STRAIGHT LINE DRAWN BETWEEN SAID DESIGNATED POINTS. REVISIONS IN THE SEWER V.C.P. SHALL BE INDICATED BY THE DATE OF REVISION.
 THIS DRAWING AND THE DATA HEREON ARE HEREBY MADE A PART OF THE SPECIFICATIONS. NO PART OF THE WORK CAN BE STARTED UNLESS THE CONTRACTOR OBTAINS A PERMIT TO EXCAVATE IN THE CITY OF LOS ANGELES FROM THE COUNTY ENGINEER'S OFFICE. NO. 1 AND PERMIT TO THE COUNTY ENGINEER. LOCAL 300 COUNTY ENGINEER'S OFFICE. BRIDGE AND CONSTRUCTION INSPECTION DIVISION. 125 SOUTH SPRING STREET, LOS ANGELES, CALIFORNIA. APPROVAL OF THIS PLAN BY THE COUNTY OF LOS ANGELES DOES NOT CONSTITUTE A GUARANTEE AS TO THE ACCURACY OF THE LOCATION OR OF THE EXISTENCE OR NON-EXISTENCE OF ANY UNDERGROUND UTILITY PIPE, OR STRUCTURE WITHIN THE LIMITS OF THIS PROJECT. THIS WORK IS TO BE DONE AS A STATE HIGHWAY. A PERMIT MUST BE OBTAINED FROM THE STATE OF CALIFORNIA, DIVISION OF HIGHWAYS, 120 SOUTH SPRING STREET, LOS ANGELES, CALIFORNIA.

REVISION 4-23-65
 PAGES 1 & 2; Realigned Sewer
 From M.H. 6+54.18 to M.H.
 16+81.00 on Plan and Profile.
 APPROVED: [Signature] COUNTY ENGINEER

COLLECT CHARGES AS INDICATED
 [Signature] 9/1/65

J.N. 036634



| | | | |
|-----|------|------|----|
| NO. | DATE | REV. | BY |
| | | | |
| | | | |
| | | | |

QE
 512 WEST EIGHTH STREET, LOS ANGELES, CALIFORNIA
QUINTON ENGINEERS, LTD.
 PLANNING • ENGINEERING • ARCHITECTURE

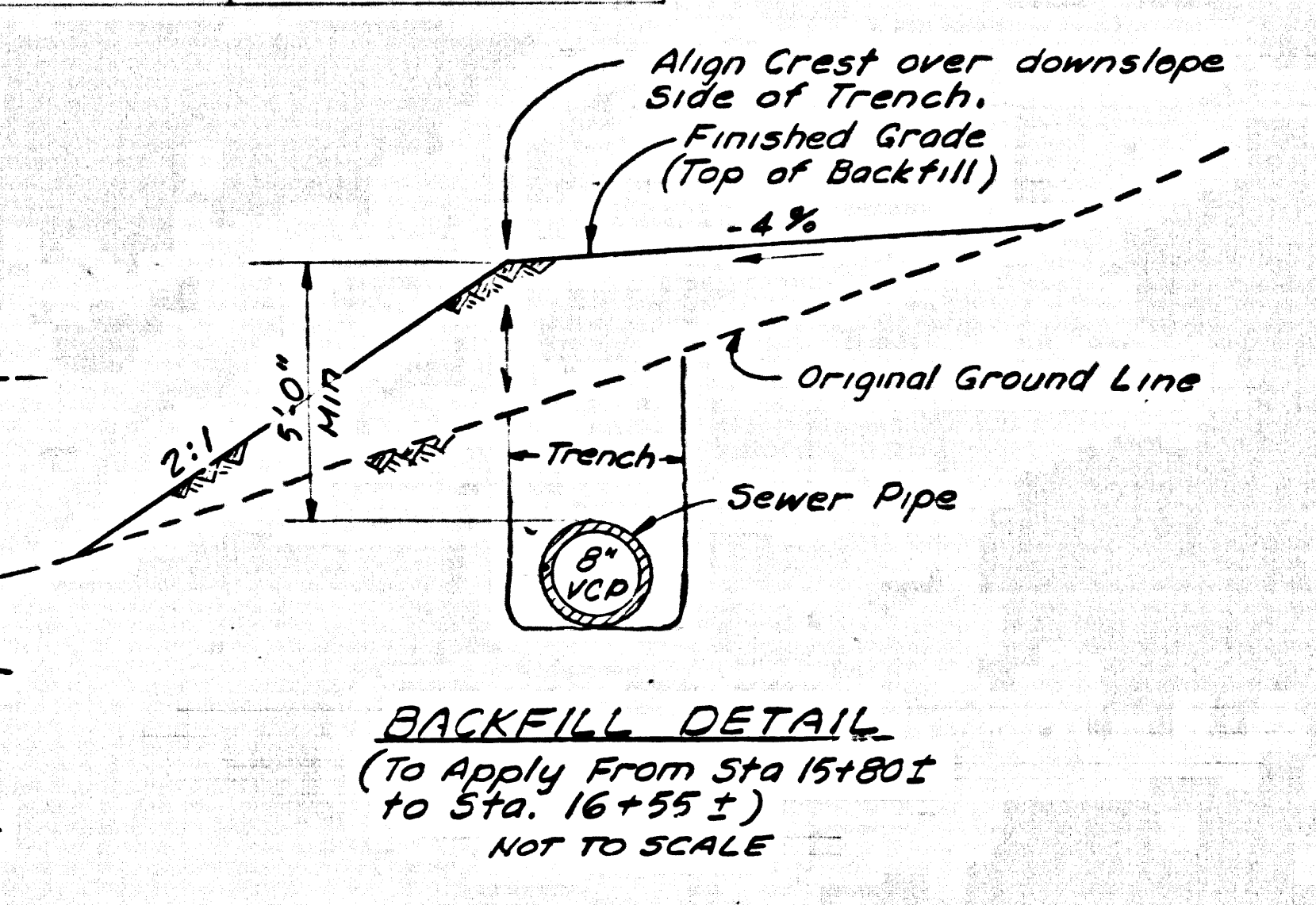
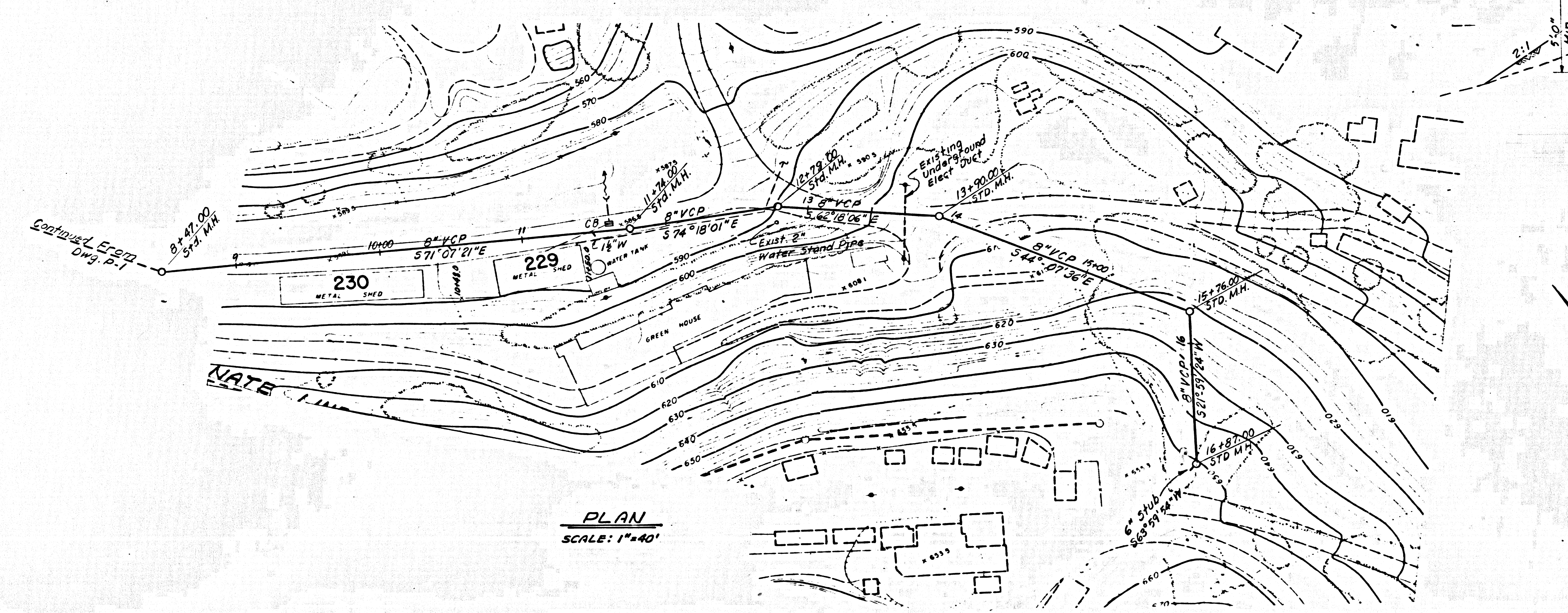
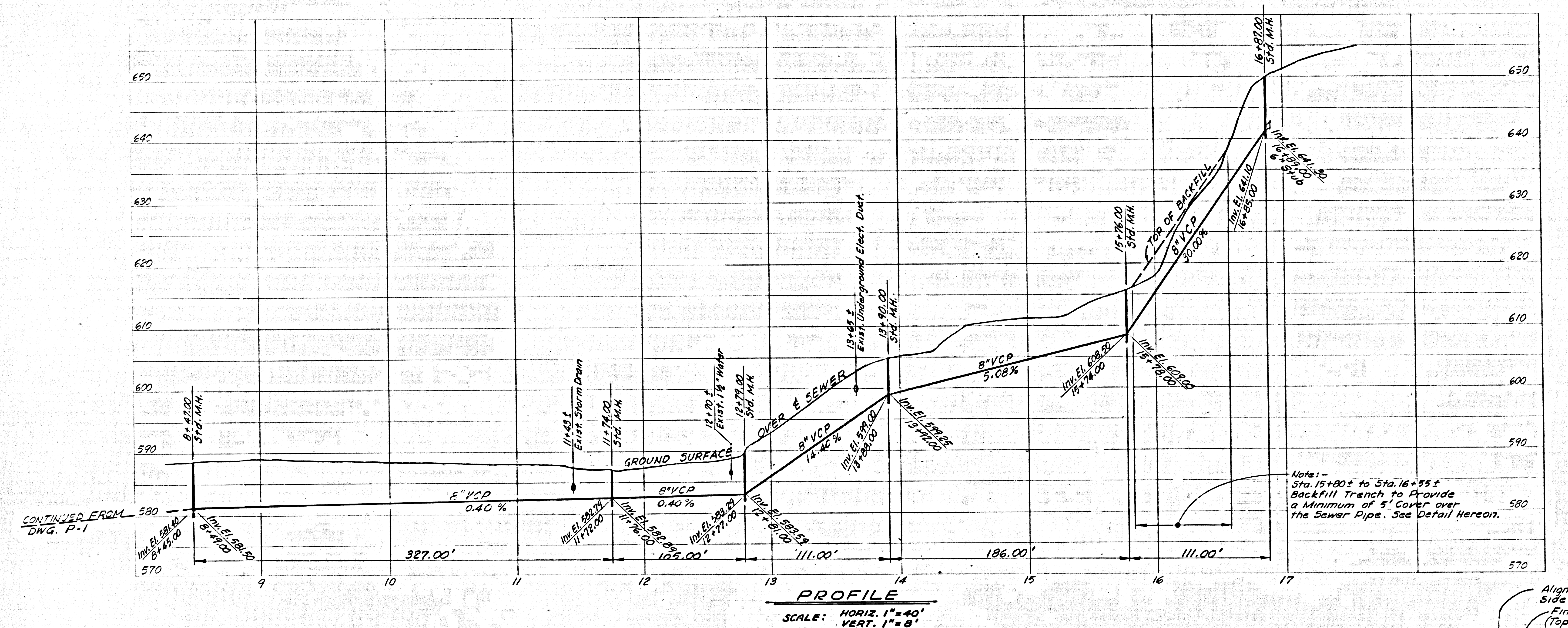
MCA INC.
 100 UNIVERSAL CITY PLAZA
 UNIVERSAL CITY, CALIF.

SEWER LINE "D"
 PLAN & PROFILE
 STA 0+00 TO STA. 8+47.00

| | | | |
|-------------|-------------|-------------|-------------|
| DESIGNED BY | ISBELL | DATE | SEP 13 1965 |
| CHECKED BY | [Signature] | PROJECT NO. | 64314-P |
| | | | P. 1 |

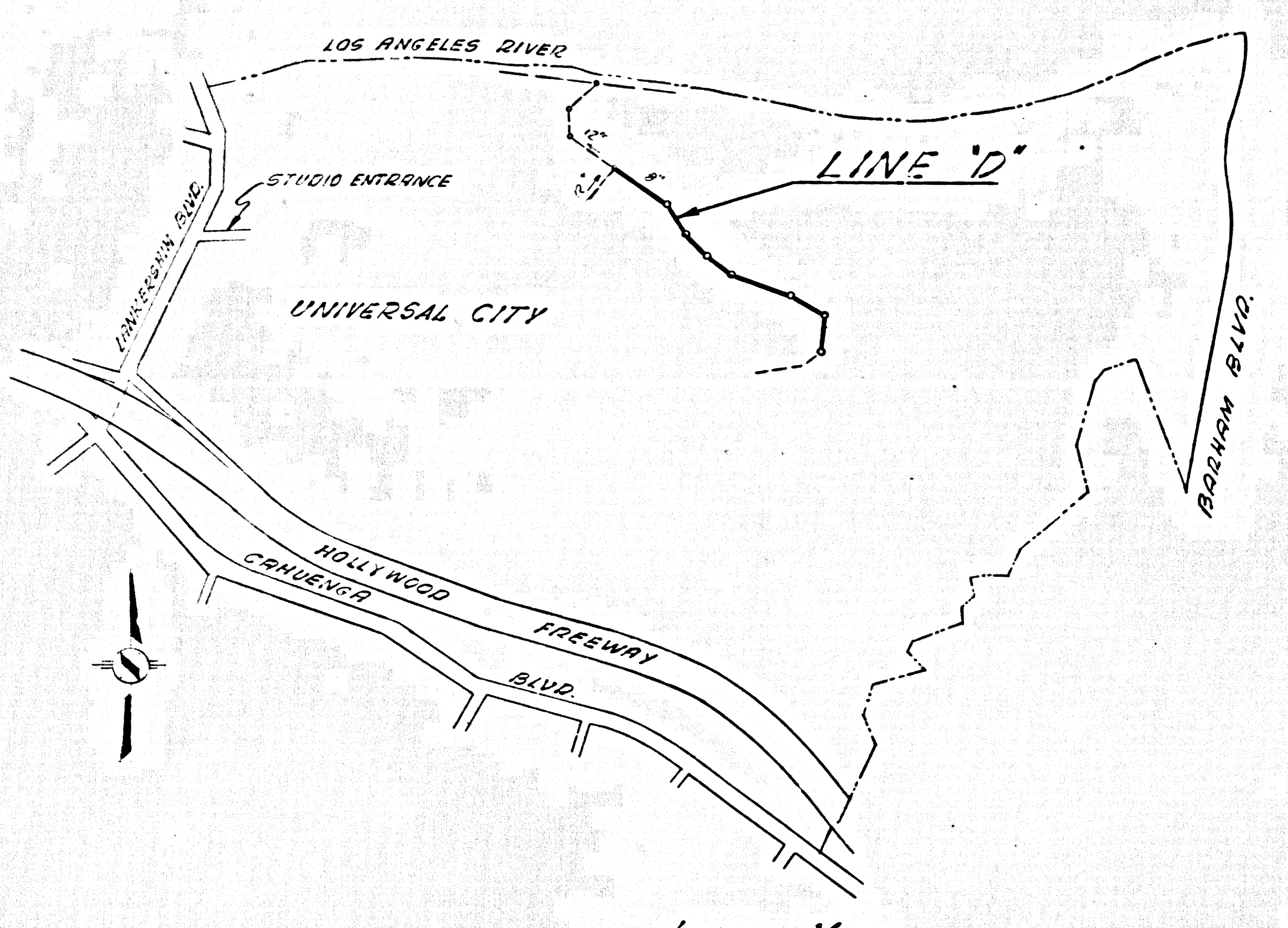
NO CHARGE FOR CONNECTION

37506



37507

| | | | | | | | | | |
|--|--|---|--|------------------|---------------|-----------------|-------------------|----------------------|----------------|
| | 612 WEST EIGHTH STREET, LOS ANGELES, CALIFORNIA QUINTON ENGINEERS, LTD. PLANNING · ENGINEERING · ARCHITECTURE | MCA INC. 100 UNIVERSAL CITY PLAZA UNIVERSAL CITY, CALIFORNIA | SEWER LINE "D" PLAN & PROFILE STA. 8+47.00 TO STA. 16+87.00 | DESIGNED: ISBELL | DRAWN: ISBELL | CHECKED: H.W.F. | DATE: SEP 13 1965 | PROJECT NO.: 64314-P | SHEET NO.: P-2 |
| | APPROVED: <i>[Signature]</i> | | | DATE: | PROJECT NO.: | SHEET NO.: | | | |



B.M. * 0800090 ELEV. 583.299
 CITY OF LOS ANGELES PRECISE B.M. * 0800090
 SPK. IN S.D. C.B. OF NORTH FWY SERVICE ROAD
 (HOLLYWOOD FWY) 3.7 FT. HD CURB RETURN
 TO LAMBERSHIM BLVD. AT WEST END OF
 CATCH BASIN. ELEV. 583.239.

(DOUBLE SCALE)
 HOLLYWOOD BLDG. DIST. NO. 9

PROFILE ALIGNMENT AND GRADE OF
 SANITARY SEWERS PAGE 1
 TO BE CONSTRUCTED IN

UNIVERSAL CITY LINE D
 PRIVATE CONTRACT NO. 7458

W.S. 54
 2 SHEETS, 2 PAGES
 SCALE: VERT. 1"=4' HORIZ. 1"=40' SEPT. 1965 375 04

PREPARED IN THE OFFICES OF
 QUINTON ENGINEERS LTD.
 H.W. Jansen
 REG. C.E. NO. 2422

- PROVIDE STAKES ON THE PROPERTY LINES PRODUCED AT RIGHT ANGLES TO THE SEWER LINE AT THE CENTER LINE OF EACH BUILDING.
- NO REPRESENTATIVE OF THE COUNTY ENGINEER WILL BARRICADE OR LAY OUT ANY PORTION OF THE WORK.
- THE PRIVATE ENGINEER SHALL FURNISH THE COUNTY ENGINEER WITH GRADE SHEETS AND STATIONING FOR ALL HOUSE LATERALS AND 12" MAIN LATERALS AND SHALL PROVIDE STAKES FOR THEM AT THEIR PROPER LOCATIONS WITH STATIONING PLAINLY MARKED. ALL HOUSE LATERALS SHALL BE CONSTRUCTED IN A STRAIGHT ALIGNMENT AT RIGHT ANGLES TO THE MAIN LINE EXCEPT AS SHOWN ON THE PLANS. HOUSE LATERALS FROM CHIMNEYS SHALL NOT HAVE AN ANGLE OF LESS THAN 45° WITH THE MAIN LINE SEWER. ANY CHANGE IN ALIGNMENT SHALL BE INDICATED BY THE PRIVATE ENGINEER.
- THE PRIVATE ENGINEER SHALL FURNISH THE HOUSE LATERAL DEPTH AT THE PROPERTY LINE BELOW THE TOP OF CURB REVISION FOR EACH HOUSE LATERAL ON THE GRADE SHEET.
- NO REVISIONS SHALL BE MADE IN THESE PLANS WITHOUT THE APPROVAL OF THE COUNTY ENGINEER.
- THE CONTRACTOR SHALL NOTIFY THE CONSTRUCTION DIVISION BY TELEPHONE, RADIOS, OR 4:45 P.M. AT LEAST TWENTY FOUR HOURS BEFORE STARTING ANY WORK UNDER THIS CONTRACT.
- MANHOLES SHALL BE BUILT SEWER STRUCTURES PER S-1, PRECAST CONCRETE MANHOLES PER S-5 OR S-6 MAY BE USED AS AN ALTERNATE IN LOCATIONS APPROVED BY THE COUNTY ENGINEER.
- USE STANDARD MANHOLE FRAMES AND COVERS, S-15 EXCEPT AS NOTED.
- MANHOLE TOPS IN UNIMPROVED AREAS OF WAY TO BE 24" HIGHER ABOVE FINISHED GRADE.
- USE EXTRA STRENGTH PIPE. ALL PIPE IS STANDARD DEPTH EXCEPT AS NOTED.
- USE MECHANICAL COMPRESSION JOINTS FOR ALL V.C.P. JOINTS PER SPECS., SECS. 36 & 40 & 44.
- WHERE EVER CHOKING WATER IS ENCOUNTERED DURING THE CONSTRUCTION OF THE SEWER, THE V.C.P. JOINTS SHALL BE OF JOINT COMPANING PER SPECS., SECS. 38 & 40, OR MECHANICAL COMPRESSION JOINTS PER SPECS., SEC. 36.
- IF A POWER POLE IS WITHIN THREE FEET OF THE SEWER, THE SEWER SHALL BE ENCASED PER S-23 TWO FEET ON EACH SIDE FROM THE POINT OF INTERFERENCE.
- IF ANYWHERE THE COURSE OF CONSTRUCTION IS DETERMINED THAT THERE IS LESS THAN FOUR FEET OF COVER OVER THE TOP OF A MAIN LINE OR HOUSE LATERAL, V.C.P. SEWER WHICH IS NOT SHOWN ON THE PLANS, THE PIPE SHALL BE ENCASED PER S-23 UNDER OTHERWISE APPROVED BY THE COUNTY ENGINEER.
- HOUSE LATERALS TO BE CONSTRUCTED WITH INVERTS AT PROPERTY LINE.
- RESURFACE ALL TRENCHES WITHIN PAVED AREAS TO MEET L.A. COUNTY ROAD DEPT. OR CALIFORNIA STATE HIGHWAY REQUIREMENTS IN ACCORDANCE WITH PERMITS.
- FOR BACKFILLING MATERIALS USE FORMULA NO. 2 PER SPECS., SEC. 44.
- ALL STATE & LOCAL TRENCH SAFETY ORDERS WILL BE RIGIDLY ENFORCED.
- TRENCH BACKFILL SHALL BE COMPACTED TO 90% RELATIVE DENSITY.
- PAVEMENT REPLACEMENT WILL BE BY OWNER.

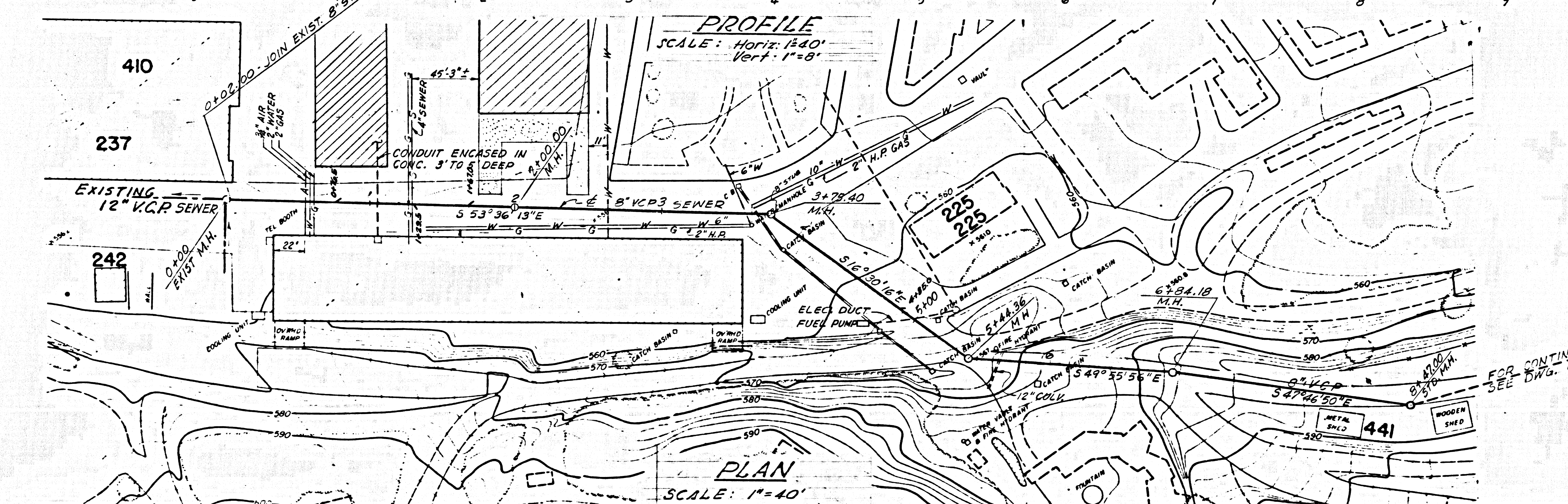
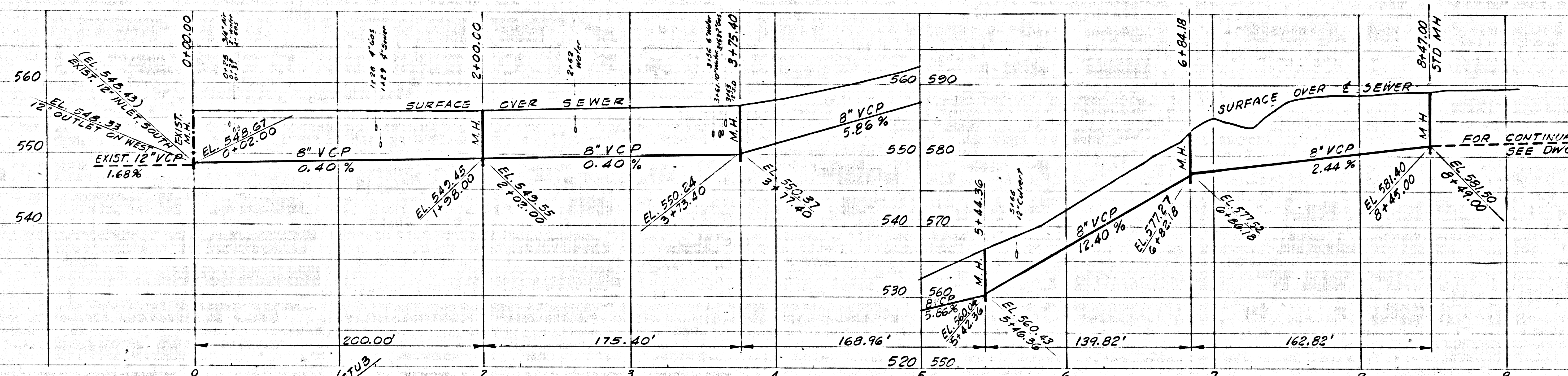
NOTE:
 GRADE TO WHICH THIS IMPROVEMENT IS TO BE CONSTRUCTED ARE SHOWN ON PLANS AND PROFILES. GRADE POINTS FOR TOP OF CURB, CENTER LINE OF STREET, OR CENTER LINE OF ALLEYS ARE INDICATED BY CIRCLES ON PROFILES AT ALL POINTS BETWEEN DESIGNATED STATIONING. GRADE SHALL BE ESTABLISHED SO AS TO CONFORM TO A STRAIGHT LINE BETWEEN SAID DESIGNATED POINTS.
 THIS DRAWING AND THE DATA HEREON ARE HEREBY MADE A PART OF THE SPECIFICATIONS.
 BEFORE WORK CAN BE STARTED, THE CONTRACTOR MUST OBTAIN A PERMIT TO EXCAVATE IN COUNTY STREETS FROM THE L.A. COUNTY PUBLIC WORKS DEPARTMENT AND A PERMIT TO USE THE COUNTY ENGINEER'S ROAD AND COUNTY ENGINEERING BUILDING CONSTRUCTION DIVISION AND BECOME VALID.
 APPROVAL OF THIS PLAN BY THE COUNTY OF LOS ANGELES DOES NOT CONSTITUTE A REPRESENTATION AS TO THE ACCURACY OF THE LOCATION OF OR THE EXISTENCE OR NON-EXISTENCE OF ANY UNDERGROUND UTILITY PIPE, OR STRUCTURE WITHIN THE LIMITS OF THIS PROJECT. THIS NOTE APPLIES TO ALL PAGES.
 IF WORK IS TO BE DONE IN A STATE HIGHWAY, A PERMIT MUST BE OBTAINED FROM THE STATE OF CALIFORNIA, DIVISION OF HIGHWAYS, 120 SOUTH SPRING STREET, LOS ANGELES, CALIFORNIA.

REVISION 9-23-65
 PAGES 1 & 2: Realigned Sewer
 From M.H. 6+84.18 to M.H.
 16+37.00 in Plan and Profile.
 APPROVED: [Signature] COUNTY ENGINEER

COLLECT CHARGES
 AS INDICATED
 H.W. Jansen 9/14/65

COUNTY OF LOS ANGELES, CALIFORNIA
 JOHN A. LAMBE, COUNTY ENGINEER
 APPROVED BY: [Signature] ASSISTANT ENGINEER
 SUBMITTED BY: [Signature] REGIONAL ENGINEER
 CHECKED BY: [Signature] REG. C.E. NO. 106453

J.N. 036634



| NO. | DATE | REVISIONS |
|-----|------|-----------|
| | | |
| | | |

QE
 812 WEST EIGHTH STREET, LOS ANGELES, CALIFORNIA
QUINTON ENGINEERS, LTD.
 PLANNING • ENGINEERING • ARCHITECTURE

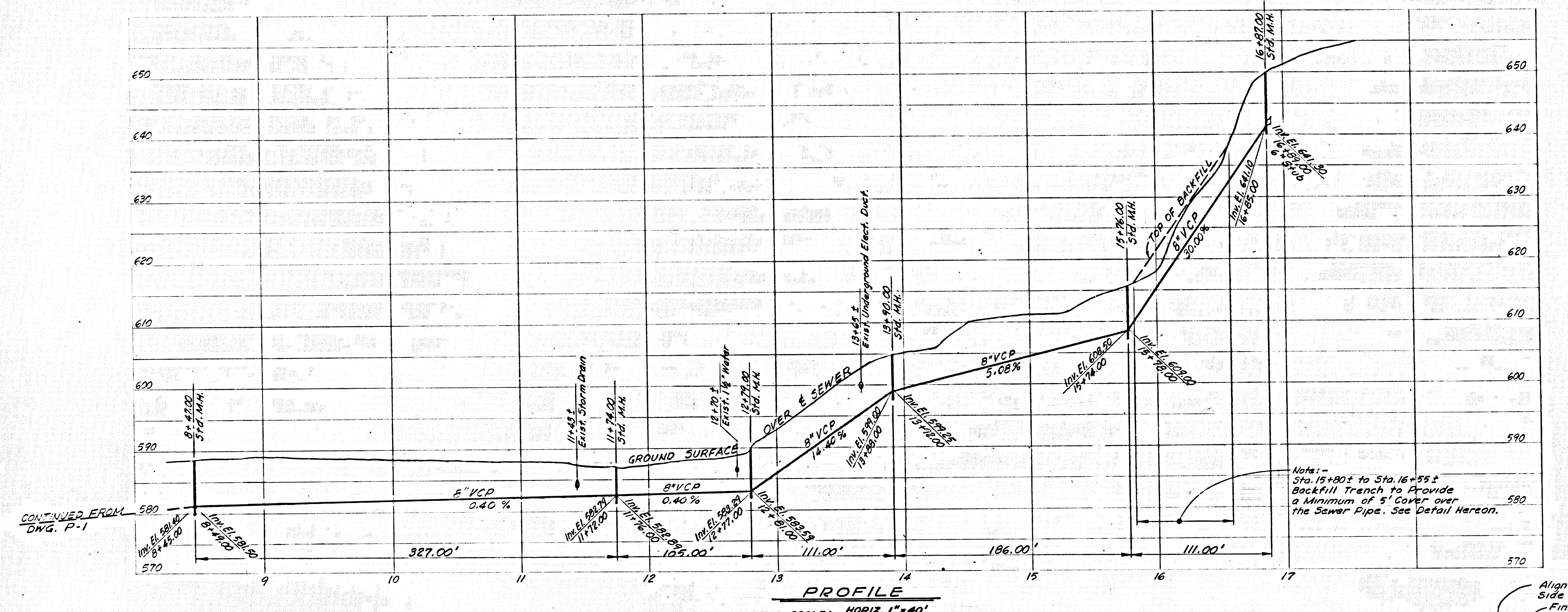
MCA INC.
 100 UNIVERSAL CITY PLAZA
 UNIVERSAL CITY, CALIF.

SEWER LINE "D"
 PLAN & PROFILE
 STA 0+00 TO STA. 8+47.00

| DESIGNED BY | DATE | JOB NO. |
|-------------|-------------|---------|
| ISBELL | SEP 13 1965 | 64314-P |
| ISBELL | | P. 1 |

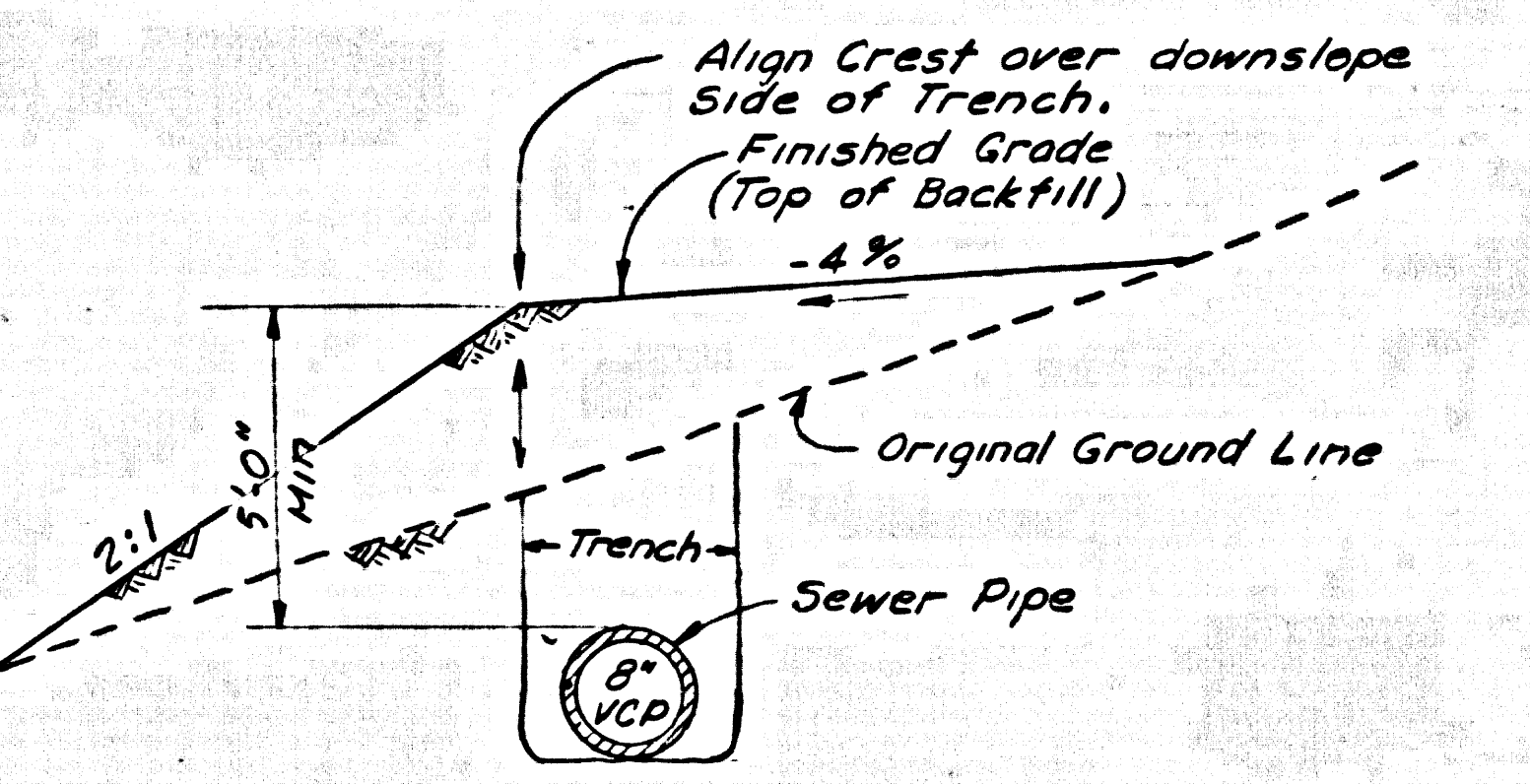
NO CHARGE FOR CONNECTION

37506



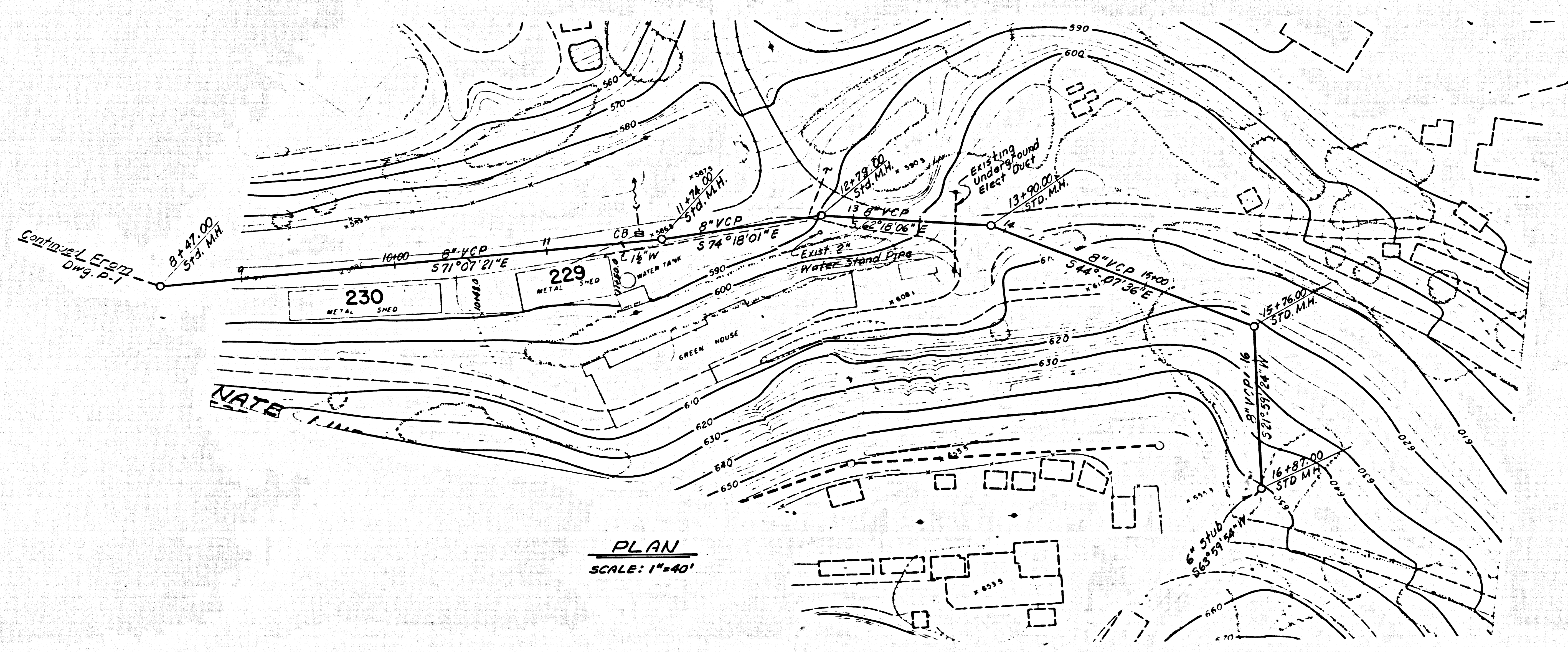
Note: -
Sta. 15+80± to Sta. 16+55±
Backfill Trench to Provide
a Minimum of 5' Cover over
the Sewer Pipe. See Detail Hereon.

PROFILE
SCALE: HORIZ. 1"=40'
VERT. 1"=8'



BACKFILL DETAIL
(To Apply From Sta. 15+80±
to Sta. 16+55±)
NOT TO SCALE

37507



PLAN
SCALE: 1"=40'



512 WEST EIGHTH STREET, LOS ANGELES, CALIFORNIA
QUINTON ENGINEERS, LTD.
PLANNING • ENGINEERING • ARCHITECTURE

M C A INC.
100 UNIVERSAL CITY PLAZA
UNIVERSAL CITY, CALIFORNIA

SEWER LINE "D"
PLAN & PROFILE
STA. 8+47.00 TO STA. 16+87.00

| | | | | | |
|-----------|--------|------|-------------|-------------|---------|
| DESIGNED | ISBELL | DATE | SEP 13 1965 | PROJECT NO. | 64314-P |
| CHECKED | ISBELL | DATE | | PLAN NO. | P-2 |
| IN CHARGE | NWF | DATE | | REV. NO. | |