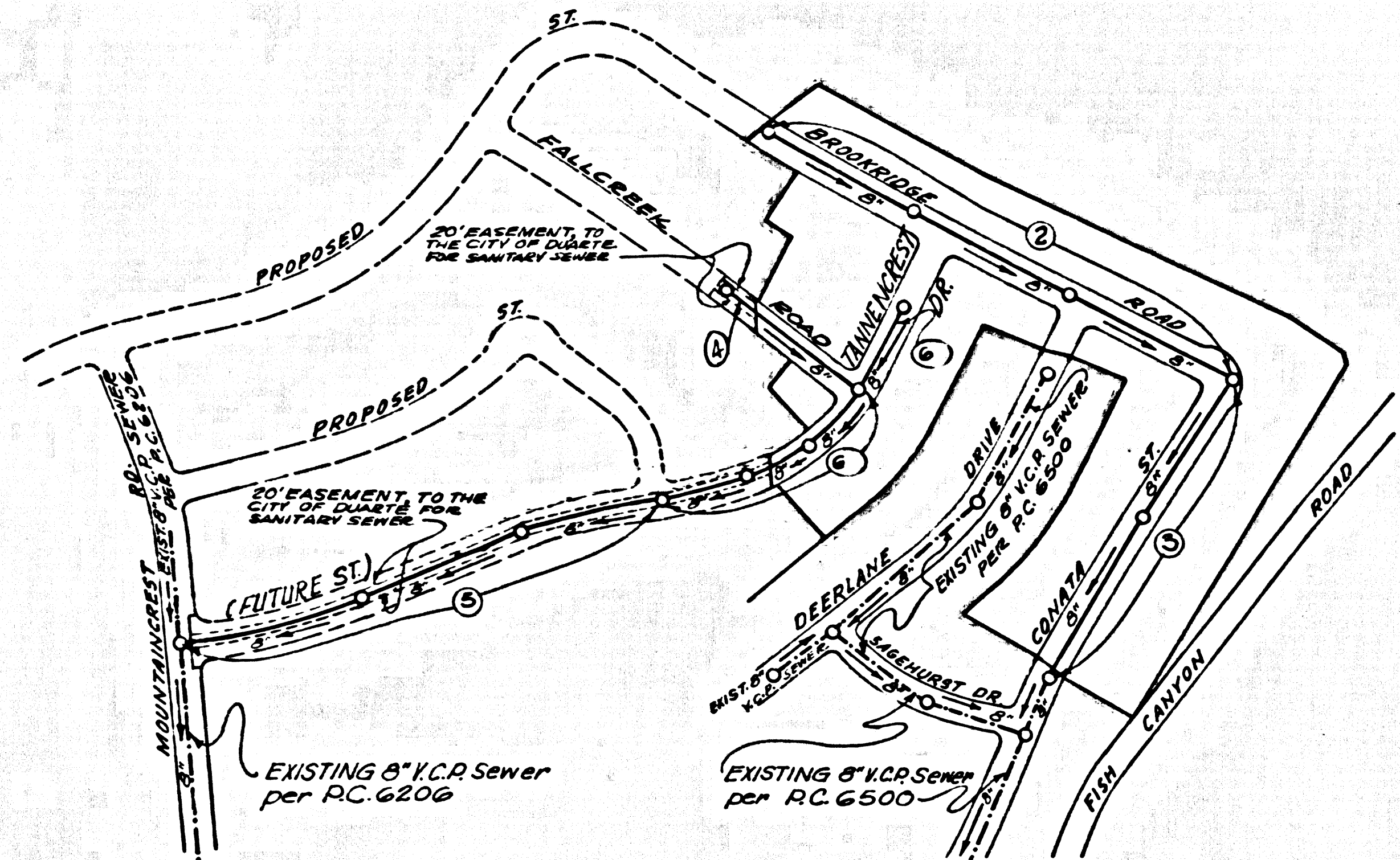


B.M. S.G. 2085 ELEV. 610.002
 R.D. B.M. Tag in S. Curb Royal Oaks
 Drive 25' E. of Bettyhill Ave. (road) 18' S. of Royal Oaks Drive.
 COVINA QUAD. 19.60



INDEX MAP
 TRACT NO. 22671
 SCALE: 1"=300'
 P.C. 7459

Any connection to the sewage system of County Sanitation District, provided directly or indirectly by the sewers shown on these plans, shall be considered a temporary connection until all area sewered is annexed to said district, at which time the connection shall become permanent. If for any reason the annexation to the district of any area sewered hereunder is not completed, the property not in the district will be required to disconnect unless a contract is entered into with the district providing for the disposal of sewage from the area.

CITY OF DUARTE BLDG. DIST. NO. 5.02

- NOTES:
1. PROVIDE STAKES ON THE PROPERTY LINE OR PROPERTY LINES PRODUCED AT RIGHT ANGLES TO THE SEWER LINE AT THE CENTER LINE OF EACH MANHOLE.
 2. NO REPRESENTATIVE OF THE CITY ENGINEER WILL SURVEY OR LAY OUT ANY PORTION OF THE WORK.
 3. THE PRIVATE ENGINEER SHALL FURNISH THE CITY ENGINEER WITH GRADE SHEETS FOR ALL HOUSE LATERALS AND Y BRANCHES AND SHALL PROVIDE STAKES FOR THEM AT THEIR PROPER LOCATIONS WITH STATIONING PLAINLY MARKED. ALL HOUSE LATERALS SHALL BE CONSTRUCTED IN A STRAIGHT ALIGNMENT AT RIGHT ANGLES FROM THE MAIN LINE SEWER EXCEPT AS SHOWN ON THE PLANS. ANY CHANGE IN ALIGNMENT SHALL BE REQUESTED IN WRITING BY THE PRIVATE ENGINEER.
 4. THE PRIVATE ENGINEER SHALL FURNISH THE HOUSE LATERAL DEPTH AT THE PROPERTY LINE BELOW THE TOP OF CURB ELEVATION FOR EACH HOUSE LATERAL ON THE GRADE SHEET.
 5. NO REVISIONS SHALL BE MADE IN THESE PLANS WITHOUT THE APPROVAL OF THE CITY ENGINEER.
 6. THE CONTRACTOR SHALL NOTIFY THE CONSTRUCTION DIVISION BY TELEPHONE, MADISON 9-077, EXT. 8155, AT LEAST TWENTY-FOUR HOURS BEFORE STARTING ANY WORK UNDER THIS CONTRACT.
 7. MANHOLES SHALL BE BRICK SEWER STRUCTURES PER S-3. PRECAST CONCRETE MANHOLES PER S-2 OR S-6 MAY BE USED AS AN ALTERNATE IN LOCATIONS APPROVED BY THE CITY ENGINEER.
 8. USE STANDARD MANHOLE FRAMES AND COVERS, S-18 EXCEPT AS NOTED.
 9. 6" MIN. DIA.
 10. USE EXTRA STRENGTH PIPE. ALL PIPE IS STANDARD DEPTH EXCEPT AS NOTED.
 11. USE MECHANICAL COMPRESSION JOINTS FOR ALL V.C.P. JOINTS PER SPECS. SECS. 34 & 48 & 49.
 12. Words in circles stands for manhole labels indicate Y's shall be laid 1/2" rise per foot to ground surface.
 13. If a POWER POLE IS WITHIN THREE FEET OF THE SEWER, THE SEWER SHALL BE ENCASED, PER S-25. CASE IN TWO FEET ON EITHER SIDE FROM THE POINT OF INTERFERENCE.
 14. IF DURING THE COURSE OF CONSTRUCTION IT IS DETERMINED THAT THERE IS LESS THAN FOUR FEET OF COVER OVER THE TOP OF A MAIN LINE OR HOUSE LATERAL V.C.P. SEWER WHICH IS NOT INDICATED ON THE PLANS, THE PIPE SHALL BE ENCASED PER S-25 UNLESS OTHERWISE APPROVED BY THE CITY ENGINEER.
 15. HOUSE LATERALS TO BE CONSTRUCTED WITH INVERTS AT PROPERTY LINE... FEET BELOW CURB GRADE EXCEPT AS NOTED.
 16. RESURFACE ALL TRENCHES WITHIN PAVED AREAS TO MEET L.A. COUNTY ROAD DEPT. OR CALIFORNIA STATE HIGHWAY REQUIREMENTS IN ACCORDANCE WITH PERMITS.
 17. FOR ALLOWABLE LEAKAGE TEST USE FORMULA NO. 2, SPECS. SEC. 54.
 18. ALL STATE AND LOCAL TRENCH SAFETY ORDERS WILL BE RIGIDLY ENFORCED.

NO CONNECTIONS FOR THE DISPOSAL OF INDUSTRIAL WASTES SHALL BE MADE TO SEWERS SHOWN ON THESE DRAWINGS WITHOUT WRITTEN PERMISSION FROM THE CHIEF ENGINEER AND GENERAL MANAGER OF THE COUNTY SANITATION DISTRICTS.

COLLECT CHARGES AS INDICATED
 W.G. Jan 10/26/65

PROFILE ALIGNMENT AND GRADE OF
 SANITARY SEWERS PAGE 1

TRACT No 22671
 PRIVATE CONTRACT NO. 7459

W.S. 47-B1
 3 SHEETS, 6 PAGES
 SCALE: VERT. 1"=4' HORIZ. 1"=40'
 AUGUST, 1965

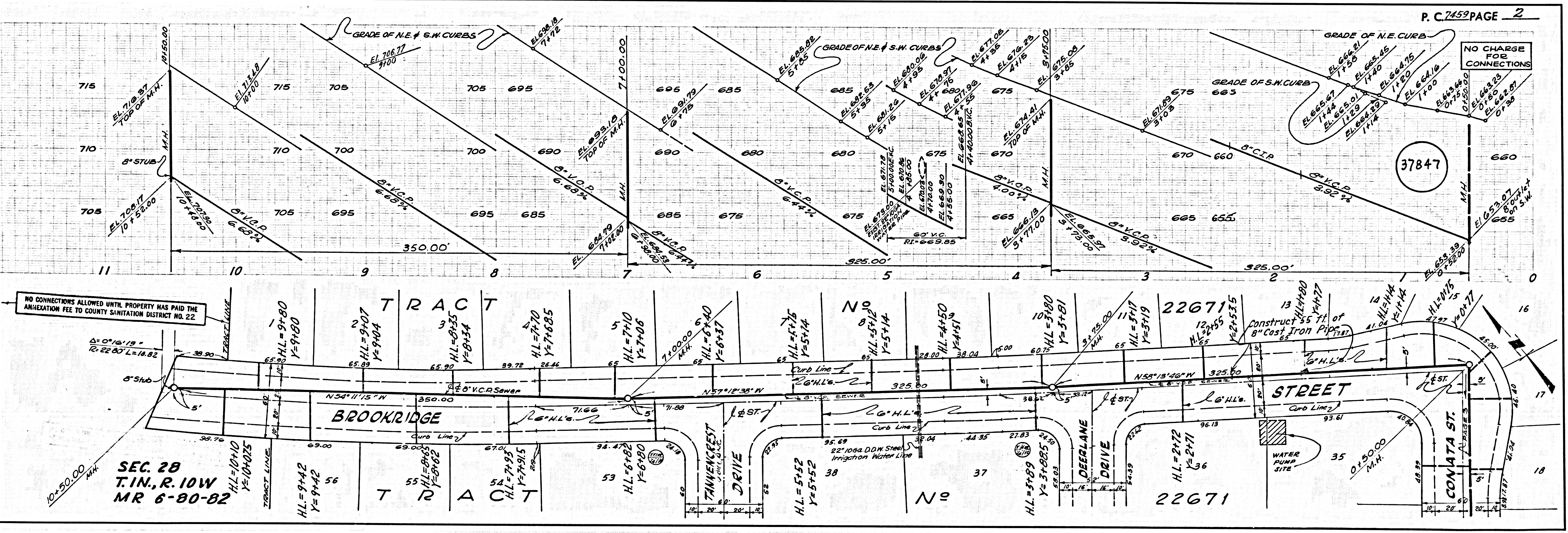
37846

PREPARED IN THE OFFICES OF
 CONSOLIDATED ENGINEERING COMPANY
 101 S. ROBERTSON BLVD., LOS ANGELES, CALIF.
 BY: Enrique Arredondo
 REG. C. E. NO. 10915

FOR LEGEND SEE PLAN NO. S-64

NOTE:
 GRADES TO WHICH THIS IMPROVEMENT IS TO BE CONSTRUCTED ARE SHOWN ON PLANS AND PROFILES. GRADE POINTS FOR TOP OF CURBS, CENTER LINE OF STREETS, OR CENTER LINE OF ALLEYS ARE SHOWN BY CIRCLES ON PROFILES AT ALL POINTS BETWEEN DESIGNATED POINTS. THE GRADE SHALL BE ESTABLISHED SO AS TO CONFORM TO A STRAIGHT LINE DRAWN BETWEEN SAID DESIGNATED POINTS. ELEVATIONS ARE IN FEET ABOVE U.S.C. & G.S. SEA LEVEL DATUM OF 1929.
 THIS DRAWING AND THE DATA HEREON ARE HEREBY MADE A PART OF THE SPECIFICATIONS.
 WORK SHALL BE CONSTRUCTED ACCORDING TO STANDARD SPECIFICATIONS DATED 1962, 1963, ON FILE IN THE OFFICE OF THE CITY ENGINEER AND SHALL BE PROSECUTED ONLY IN THE PRESENCE OF THE CITY ENGINEER.
 BEFORE WORK CAN BE STARTED, THE CONTRACTOR MUST OBTAIN A PERMIT TO EXCAVATE IN CITY STREETS FROM THE L.A. COUNTY ROAD DEPT., DISTRICT OFFICE NO. 1, AND MAKE A DEPOSIT WITH THE CITY OF DUARTE REGIONAL OFFICE, SUFFICIENT TO COVER THE COST OF CONSTRUCTION INSPECTION AND SECOND PLANS.
 APPROVAL OF THIS PLAN BY THE CITY OF DUARTE DOES NOT CONSTITUTE A REPRESENTATION AS TO THE ACCURACY OF THE LOCATION OF OR THE EXISTENCE OR NON-EXISTENCE OF ANY ENGINEERING STUDY PIPE, OR STRUCTURE WITHIN THE LIMITS OF THIS PROJECT. THIS NOTE APPLIES TO ALL PAGES.
 IF WORK IS TO BE DONE IN A STATE HIGHWAY, A PERMIT MUST BE OBTAINED FROM THE STATE OF CALIFORNIA, DIVISION OF HIGHWAYS, 120 SOUTH SPRING STREET, LOS ANGELES, CALIFORNIA.

CITY OF DUARTE CALIFORNIA
 JOHN A. LAMBIE, CITY ENGINEER
 I. D. PARKHURST, CHIEF ENGINEER
 CO. SAN. DIST. NO. 22
 APPROVED BY: [Signature]
 APPROVED BY: [Signature]
 SUBMITTED BY: [Signature]
 CHECKED BY: [Signature]
 REG. C. E. NO. 7152



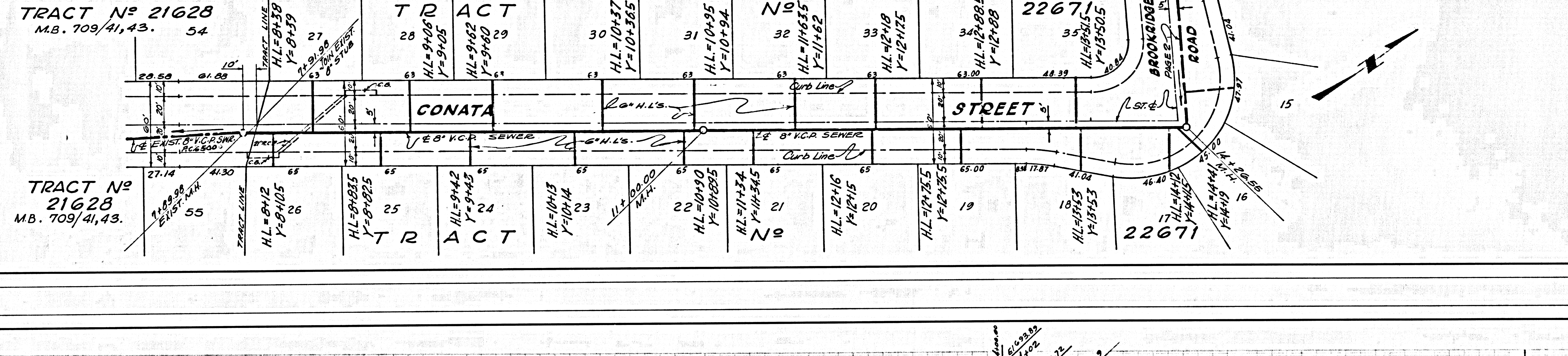
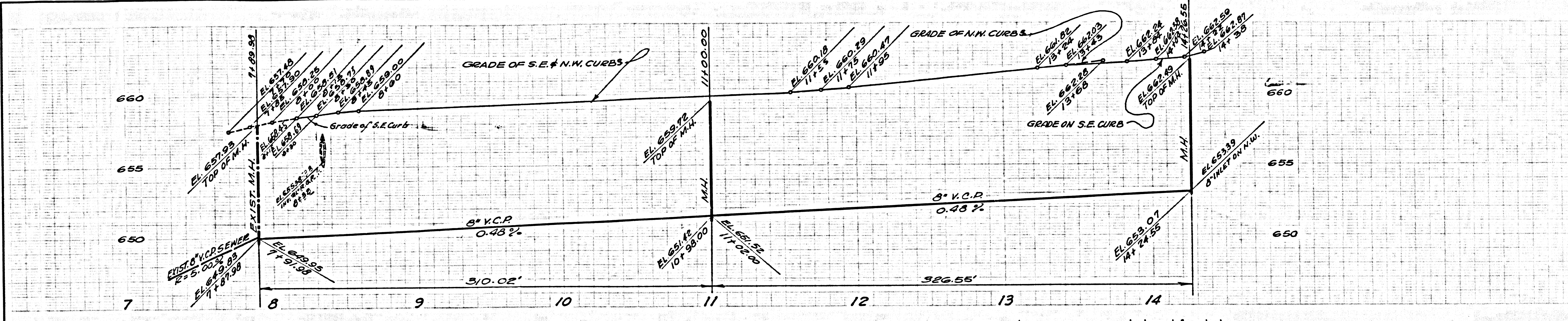
P.C. 7459 PAGE 2

37847

NO CONNECTIONS ALLOWED UNTIL PROPERTY HAS PAID THE ANNEXATION FEE TO COUNTY SANITATION DISTRICT NO. 22
 SEC. 28
 T. 1N., R. 10W
 MR 6-80-82

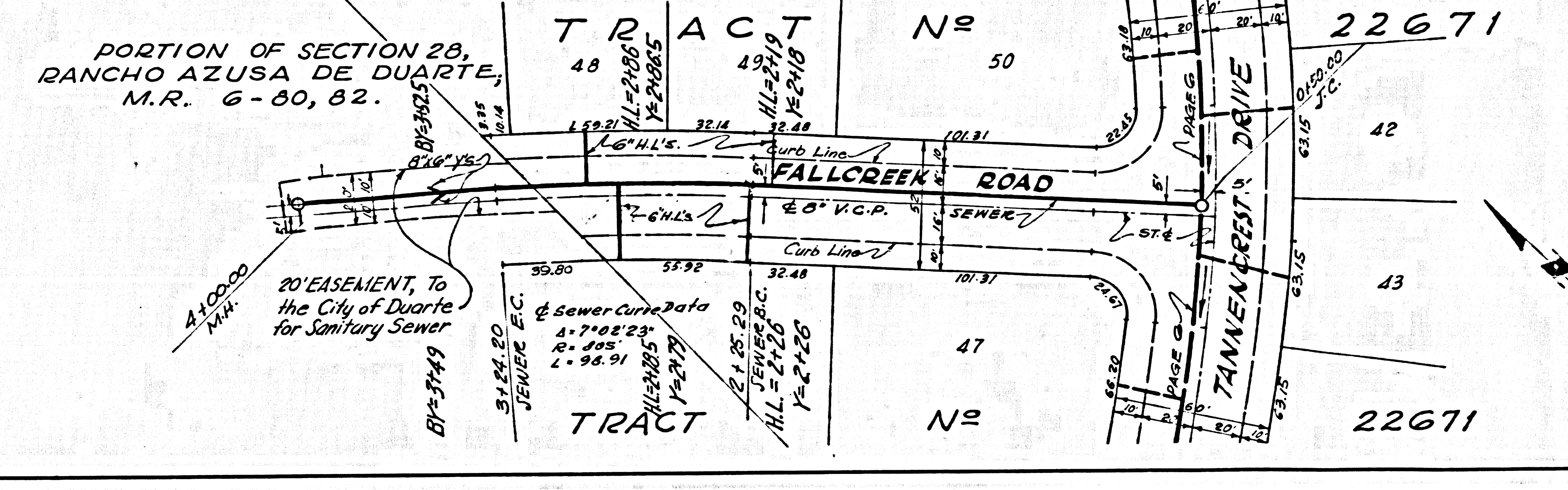
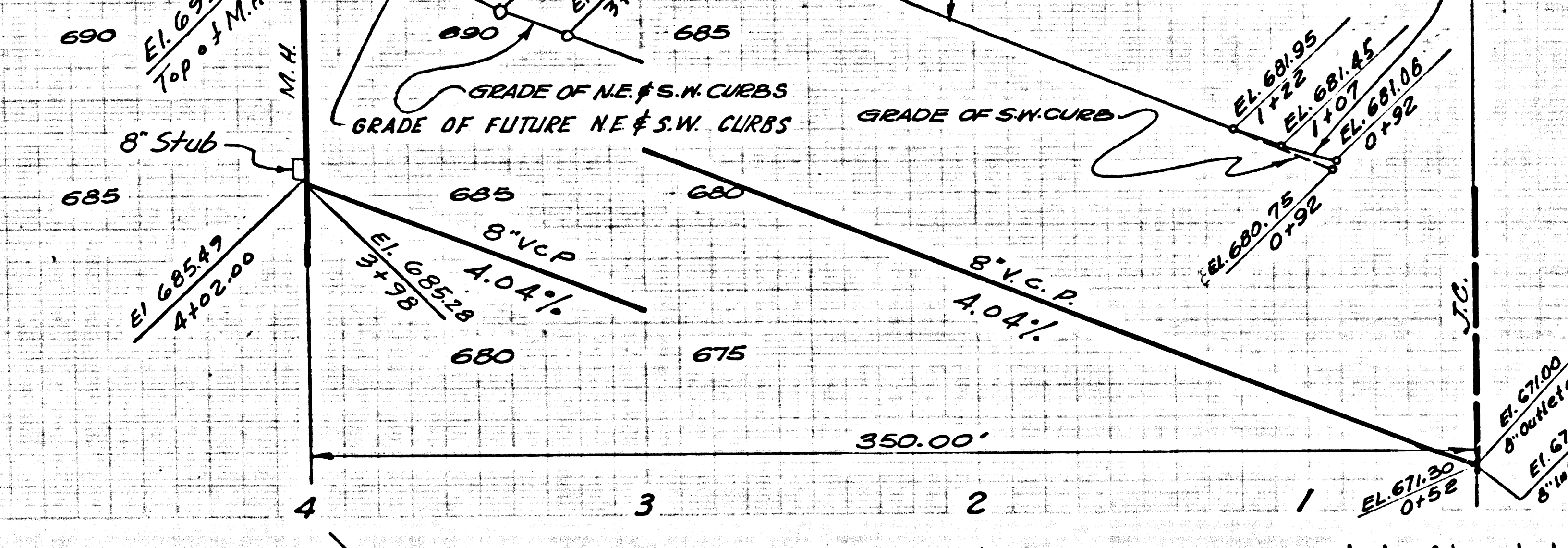
NO CHARGE FOR CONNECTIONS

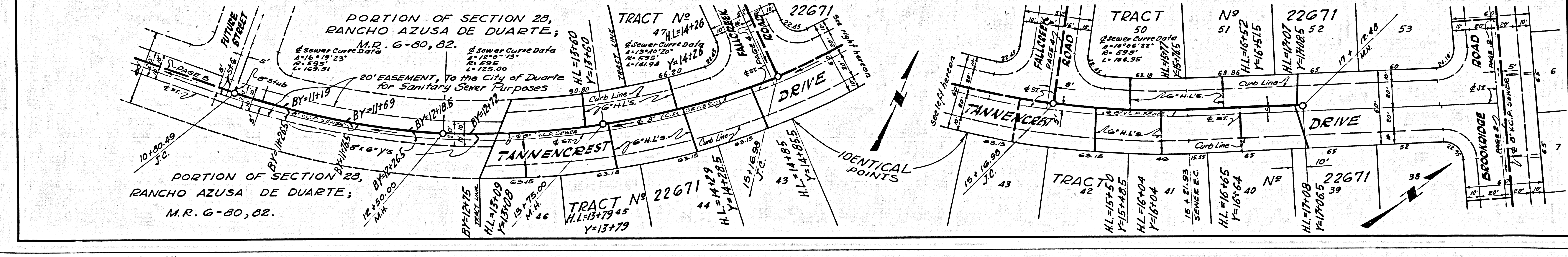
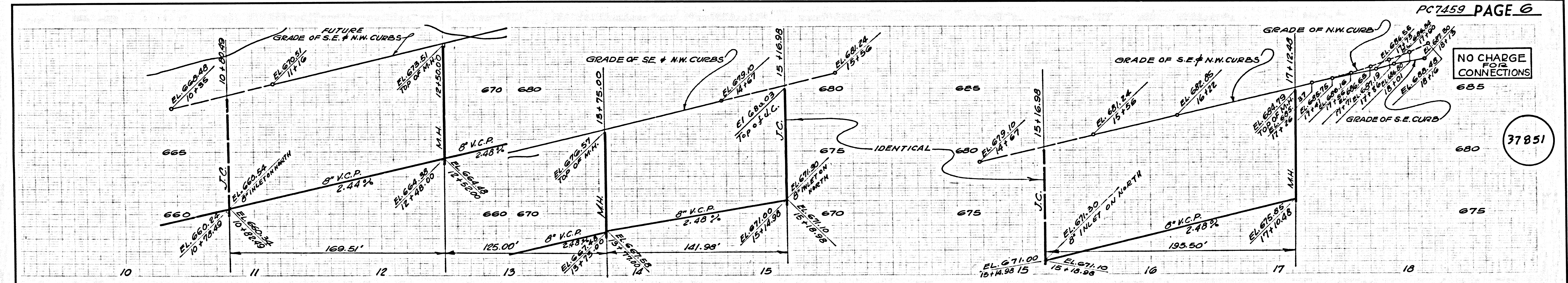
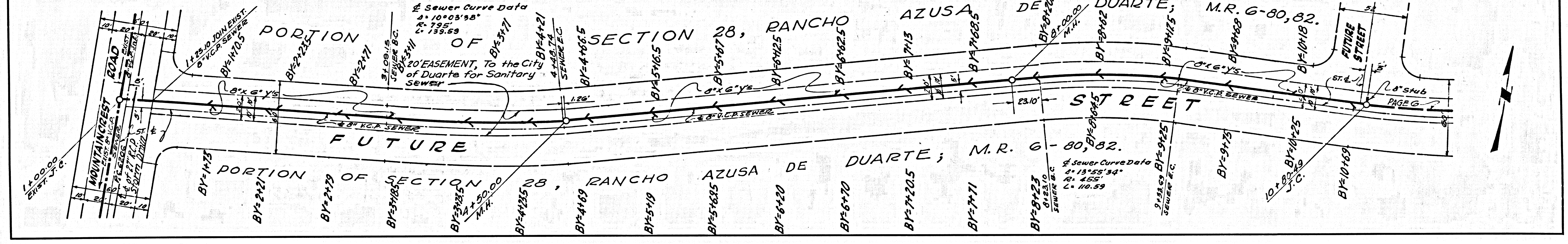
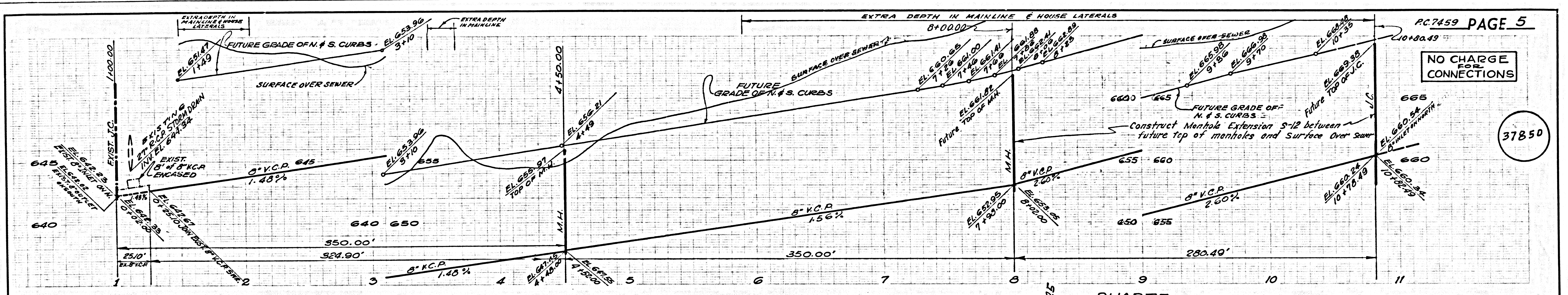
37848



NO CHARGE FOR CONNECTIONS

37849





B.M. S.G. 2055 ELEV. 610.002
 R.D. B.M. Tag in S. Curb Royal Oaks Drive 25' E. of Bettyhill Ave. (road) 18' E. of Royal Oaks Drive.
 COVINA QUAD. 19 60

CITY OF DUARTE BLDG. DIST. NO. 5.02

PROFILE ALIGNMENT AND GRADE OF
SANITARY SEWERS PAGE 1
 TO BE CONSTRUCTED IN

TRACT No 22671
 PRIVATE CONTRACT NO. 7459

W.S. 47-B1
 3 SHEETS, 6 PAGES
 SCALE: VERT. 1"=4' HORIZ. 1"=40'
 AUGUST, 1965

37846

PREPARED IN THE OFFICES OF
CONSOLIDATED ENGINEERING COMPANY
 110 S. ROBERTSON BLVD., LOS ANGELES, CALIF.

By: Enrique Oviedo
 REG. C. E. NO. 10915
 FOR LEGEND SEE PLAN NO. S-64

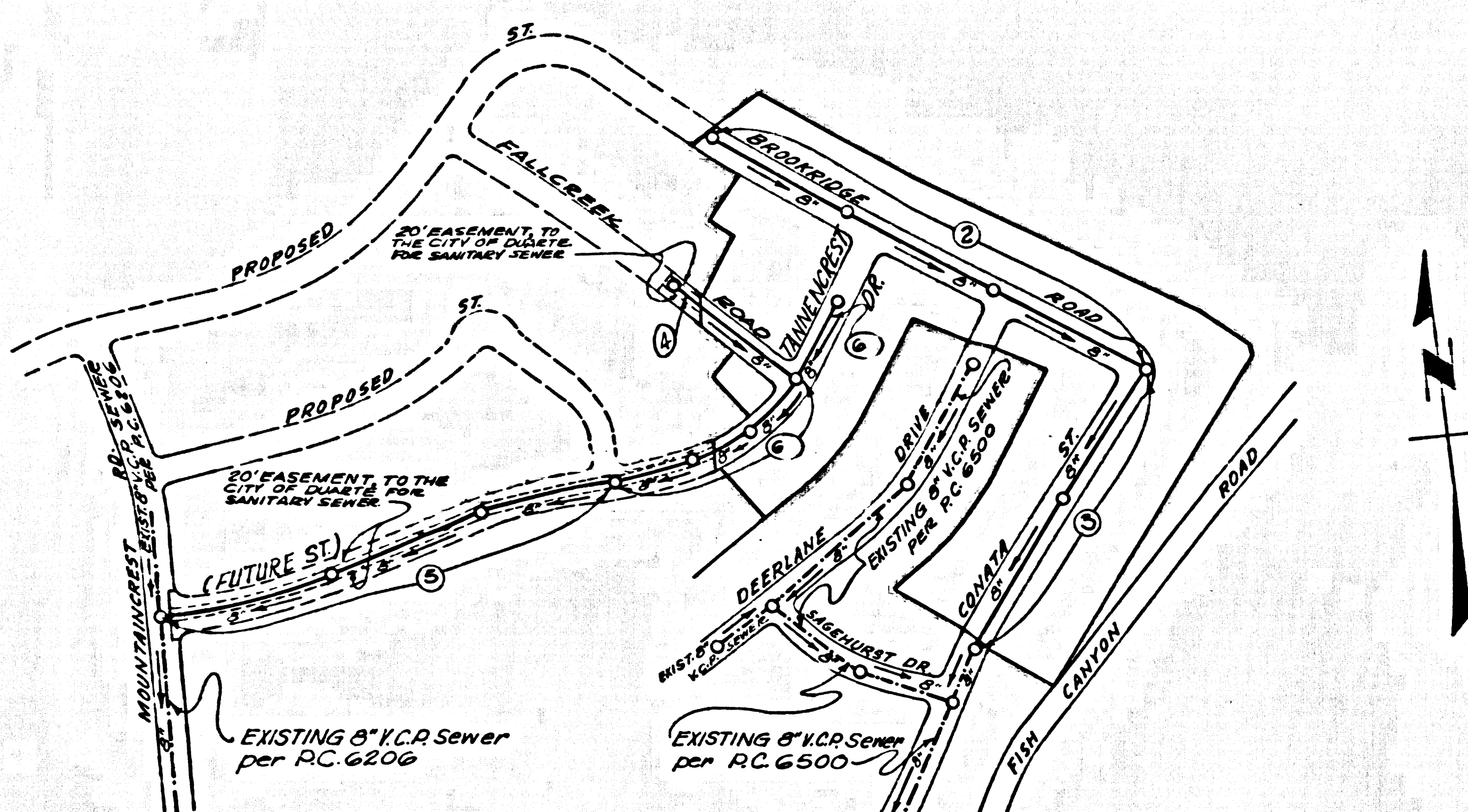
- NOTES:
1. PROVIDE STAKES ON THE PROPERTY LINE OR PROPERTY LINES PRODUCED AT RIGHT ANGLES TO THE SEWER LINE AT THE CENTER LINE OF EACH MANHOLE.
 2. NO REPRESENTATIVE OF THE CITY ENGINEER WILL SURVEY OR LAY OUT ANY PORTION OF THE WORK.
 3. THE PRIVATE ENGINEER SHALL FURNISH THE CITY ENGINEER WITH GRADE SHEETS AND STATIONING FOR ALL HOUSE LATERALS AND Y BRANCHES AND SHALL PROVIDE STAKES FOR THEM AT THEIR PROPER LOCATIONS WITH STATIONING PLAINLY MARKED. ALL HOUSE LATERALS SHALL BE CONSTRUCTED IN A STRAIGHT ALIGNMENT AT RIGHT ANGLES FROM THE MAIN LINE SEWER EXCEPT AS SHOWN ON THE PLANS. ANY CHANGE IN ALIGNMENT SHALL BE REQUESTED IN WRITING BY THE PRIVATE ENGINEER.
 4. THE PRIVATE ENGINEER SHALL FURNISH THE HOUSE LATERAL DEPTH AT THE PROPERTY LINE BELOW THE TOP OF CURB ELEVATION FOR EACH HOUSE LATERAL ON THE GRADE SHEET.
 5. NO REVISIONS SHALL BE MADE IN THESE PLANS WITHOUT THE APPROVAL OF THE CITY ENGINEER.
 6. THE CONTRACTOR SHALL NOTIFY THE CONSTRUCTION DIVISION BY TELEPHONE, MADISON 9-4747, EXT. 8153, AT LEAST TWENTY-FOUR HOURS BEFORE STARTING ANY WORK UNDER THIS CONTRACT.
 7. MANHOLES SHALL BE BRICK SEWER STRUCTURES PER S-3 PRECAST CONCRETE MANHOLES PER S-2 OR S-6 MAY BE USED AS AN ALTERNATE IN LOCATIONS APPROVED BY THE CITY ENGINEER.
 8. USE STANDARD MANHOLE FRAMES AND COVERS, S-1/B EXCEPT AS NOTED.
 9. O.M.Y.T.B.
 10. USE EXTRA STRENGTH PIPE. ALL PIPE IS STANDARD DEPTH EXCEPT AS NOTED.
 11. USE MECHANICAL COMPRESSION JOINTS FOR ALL V.C.P. JOINTS PER SPECS. SECS. 36 & 48 & 49.
 12. Words in circles *grades of house laterals indicate Y's shall be laid by private engineer, laterals shall be constructed with rise per slope to property line.*
 13. IF A POWER POLE IS WITHIN THREE FEET OF THE SEWER, THE SEWER SHALL BE ENCASED, PER S-25 CASE III, TWO FEET ON EITHER SIDE FROM THE POINT OF INTERFERENCE.
 14. IF DURING THE COURSE OF CONSTRUCTION IT IS DETERMINED THAT THERE IS LESS THAN FOUR FEET OF COVER OVER THE TOP OF A MAIN LINE OR HOUSE LATERAL V.C.P. SEWER WHICH IS NOT INDICATED ON THE PLANS, THE PIPE SHALL BE ENCASED PER S-23 UNLESS OTHERWISE APPROVED BY THE CITY ENGINEER.
 15. HOUSE LATERALS TO BE CONSTRUCTED WITH INVERTS AT PROPERTY LINE, 6" FEET BELOW CURB GRADE EXCEPT AS NOTED.
 16. RESURFACE ALL TRENCHES WITHIN PAVED AREAS TO MEET L.A. COUNTY ROAD DEPT. OR CALIFORNIA STATE HIGHWAY REQUIREMENTS IN ACCORDANCE WITH PERMITS.
 17. FOR ALLOWABLE LEAKAGE TEST USE FORMULA NO. 2, SPECS. SEC. 64.
 18. ALL STATE AND LOCAL TRENCH SAFETY ORDERS WILL BE RIGIDLY ENFORCED.

NO CONNECTIONS FOR THE DISPOSAL OF INDUSTRIAL WASTES SHALL BE MADE TO SEWERS SHOWN ON THESE DRAWINGS WITHOUT WRITTEN PERMISSION FROM THE CHIEF ENGINEER AND GENERAL MANAGER OF THE COUNTY SANITATION DISTRICTS.

COLLECT CHARGES AS INDICATED
 W.G. Jan 10/26/65

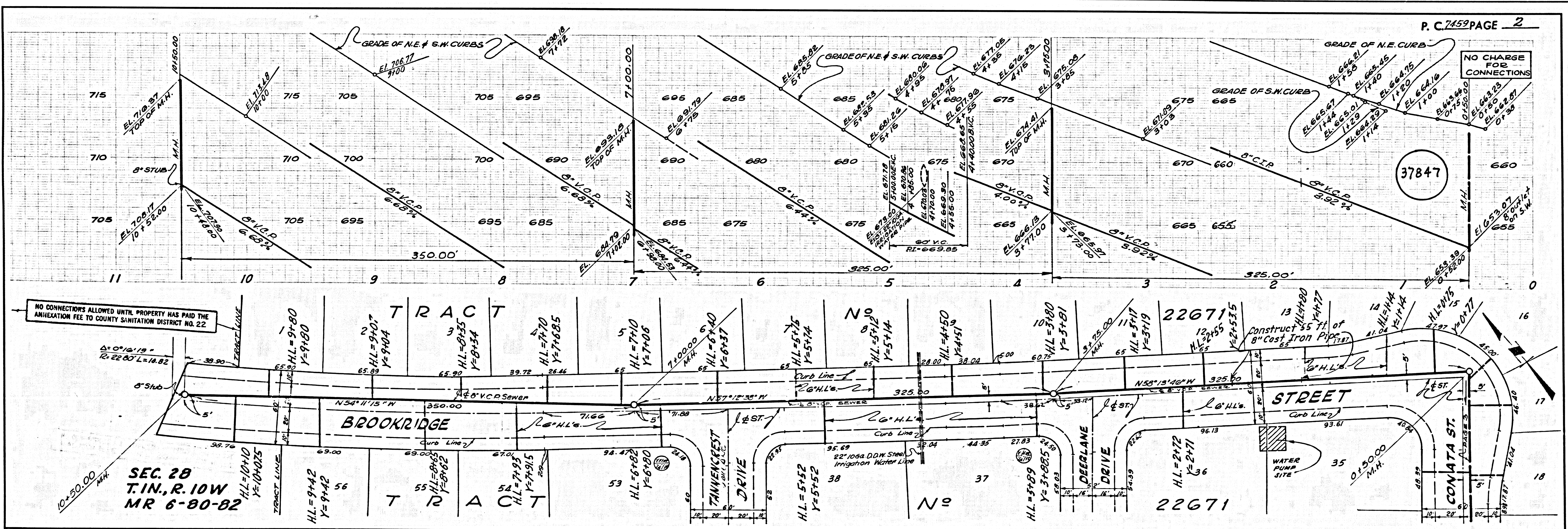
NOTE:
 GRADES TO WHICH THIS IMPROVEMENT IS TO BE CONSTRUCTED ARE SHOWN ON PLANS AND PROFILES. DESIGN POINTS FOR TOP OF CURBS, CENTER LINE OF STREETS, OR CENTER LINE OF ALLEYS ARE SHOWN BY CIRCLES ON PROFILES. AT ALL POINTS BETWEEN DESIGNATED POINTS THE GRADE SHALL BE ESTABLISHED SO AS TO CONFORM TO A STRAIGHT LINE DRAWN BETWEEN SAID DESIGNATED POINTS. ELEVATIONS ARE IN FEET ABOVE U.S.C. & G.S. SEA LEVEL DATUM OF 1929.
 THIS DRAWING AND THE DATA HEREON ARE HEREBY MADE A PART OF THE SPECIFICATIONS.
 WORK SHALL BE CONSTRUCTED ACCORDING TO STANDARD SPECIFICATIONS DATED 2/27/23, 1952, ON FILE IN THE OFFICE OF THE CITY ENGINEER AND SHALL BE PROSECUTED ONLY IN THE PRESENCE OF THE CITY ENGINEER.
 BEFORE WORK CAN BE STARTED, THE CONTRACTOR MUST OBTAIN A PERMIT TO EXCAVATE IN CITY STREETS FROM THE L.A. COUNTY ROAD DEPT., DISTRICT OFFICE NO. 1, AND MAKE A DEPOSIT WITH THE CITY OF DUARTE.
 1634 E. 3RD ST., DUARTE, CALIF. REGIONAL OFFICE, SUFFICIENT TO COVER THE COST OF CONSTRUCTION INSPECTION AND RECORD.
 APPROVAL OF THIS PLAN BY THE CITY OF DUARTE DOES NOT CONSTITUTE A REPRESENTATION AS TO THE ACCURACY OF THE LOCATION OF OR THE EXISTENCE OR NON-EXISTENCE OF ANY UNDERGROUND UTILITY PIPE, OR STRUCTURE WITHIN THE LIMITS OF THIS PROJECT. THIS NOTE APPLIES TO ALL PAGES.
 IF WORK IS TO BE DONE IN A STATE HIGHWAY RIGHT-OF-WAY PERMIT MUST BE OBTAINED FROM THE STATE OF CALIFORNIA, DIVISION OF HIGHWAYS, 120 SOUTH SPRING STREET, LOS ANGELES, CALIFORNIA.

CITY OF DUARTE CALIFORNIA
 JOHN A. LAMBIE, CITY ENGINEER J. D. PARKHURST, CHIEF ENGINEER
 CO. SAN. DIST. NO. 22
 APPROVED BY: [Signature] ASSISTANT SANITATION ENGINEER APPROVED BY: [Signature] OFFICE ENGINEER
 SUBMITTED BY: [Signature] REGIONAL ENGINEER
 CHECKED BY: [Signature] REG. C. E. NO. 7155



INDEX MAP
 TRACT NO. 22671
 SCALE: 1"=300'
 P.C. 7459

Any connection to the sewage system of County Sanitation District, provided directly or indirectly by the sewers shown on these plans, shall be considered a temporary connection until all area sewered is annexed to said district, at which time the connection shall become permanent. If for any reason the annexation to the district of any area sewered hereunder is not completed, the property not in the district will be required to disconnect unless a contract is entered into with the district providing for the disposal of sewage from the area.



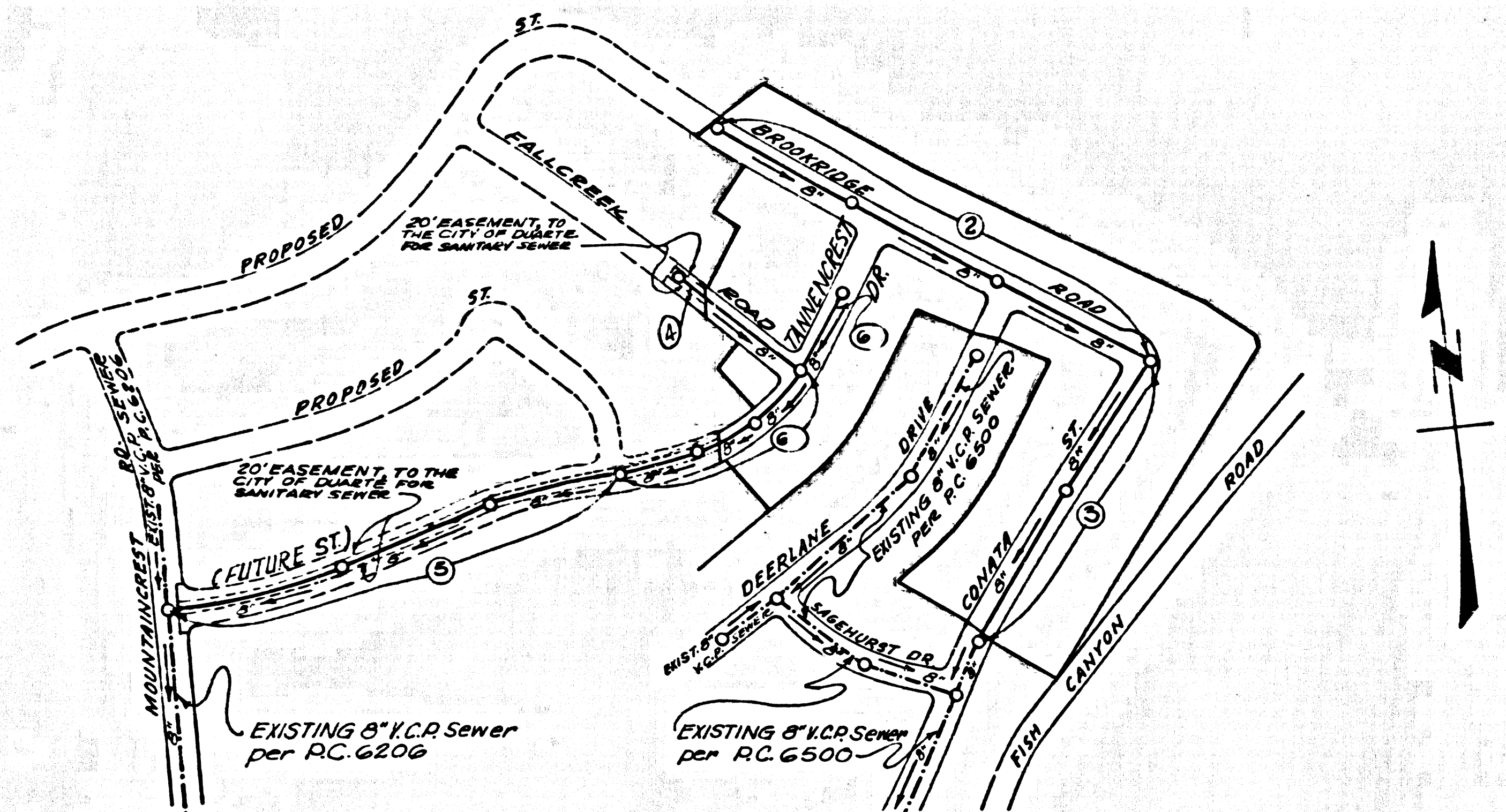
P. C. 7459 PAGE 2

NO CHARGE FOR CONNECTIONS

37847

SEC. 28
 T. 10 N., R. 10 W.
 MR 6-80-82

B.M. S.G. 2085 ELEV. 610.002
 R.D. B.M. Tag in S. Curb Royal Oaks Drive 25' E. of Bettyhill Ave. (prod.) 18' E. of Royal Oaks Drive
 COVINA QUAD. 19 60



INDEX MAP
 TRACT NO. 22671
 SCALE: 1"=300'
 P.C. 7459

Any connection to the sewage system of County Sanitation District, provided directly or indirectly by the sewers shown on these plans, shall be considered a temporary connection until all area sewered is annexed to said district, at which time the connection shall become permanent. If for any reason the annexation is not completed, the property not in the district will be required to disconnect unless a contract is entered into with the district providing for the disposal of sewage from the area.

CITY OF DUARTE BLDG. DIST. NO. 5.02

- NOTES:
1. PROVIDE STAKES ON THE PROPERTY LINE OR PROPERTY LINES PRODUCED AT RIGHT ANGLES TO THE SEWER LINE AT THE CENTER LINE OF EACH MANHOLE.
 2. NO REPRESENTATIVE OF THE CITY ENGINEER WILL SURVEY OR LAY OUT ANY PORTION OF THE WORK.
 3. THE PRIVATE ENGINEER SHALL FURNISH THE CITY ENGINEER WITH GRADE SHEETS AND STATIONING FOR ALL HOUSE LATERALS AND Y BRANCHES AND SHALL PROVIDE STAKES FOR THEM AT THEIR PROPER LOCATIONS WITH STATIONING PLAINLY MARKED. ALL HOUSE LATERALS SHALL BE CONSTRUCTED IN A STRAIGHT ALIGNMENT AT RIGHT ANGLES FROM THE MAIN LINE SEWER EXCEPT AS SHOWN ON THE PLANS. ANY CHANGE IN ALIGNMENT SHALL BE REQUESTED IN WRITING BY THE PRIVATE ENGINEER.
 4. THE PRIVATE ENGINEER SHALL FURNISH THE HOUSE LATERAL DEPTH AT THE PROPERTY LINE BELOW THE TOP OF CURB ELEVATION FOR EACH HOUSE LATERAL ON THE GRADE SHEET.
 5. NO REVISIONS SHALL BE MADE IN THESE PLANS WITHOUT THE APPROVAL OF THE CITY ENGINEER.
 6. THE CONTRACTOR SHALL NOTIFY THE CONSTRUCTION DIVISION BY TELEPHONE, MADISON 9-4747, EXT. 8155, AT LEAST TWENTY-FOUR HOURS BEFORE STARTING ANY WORK UNDER THIS CONTRACT.
 7. MANHOLES SHALL BE BRICK SEWER STRUCTURES PER S-2 PRECAST CONCRETE MANHOLES PER S-2 OR S-2-G MAY BE USED AS AN ALTERNATE IN LOCATIONS APPROVED BY THE CITY ENGINEER.
 8. USE STANDARD MANHOLE FRAMES AND COVERS, S-1/B EXCEPT AS NOTED.
 9. 2" MIN. V.P.
 10. USE EXTRA STRENGTH PIPE. ALL PIPE IS STANDARD DEPTH EXCEPT AS NOTED.
 11. USE MECHANICAL COMPRESSION JOINTS FOR ALL V.C.P. JOINTS PER SPECS. SECS. 36 & 48 & 49.
 12. Words in circles *outside of house laterals* indicate V's shall be laid horizontal and *inside of house laterals* shall be constructed with V's laid vertical.
 13. IF A POWER POLE IS WITHIN THREE FEET OF THE SEWER, THE SEWER SHALL BE ENCASED, PER S-25 CASE III, TWO FEET ON EITHER SIDE FROM THE POINT OF INTERFERENCE.
 14. IF DURING THE COURSE OF CONSTRUCTION IT IS DETERMINED THAT THERE IS LESS THAN FOUR FEET OF COVER OVER THE TOP OF A MAIN LINE OR HOUSE LATERAL V.C.P. SEWER WHICH IS NOT INDICATED ON THE PLANS, THE PIPE SHALL BE ENCASED PER S-25 UNLESS OTHERWISE APPROVED BY THE CITY ENGINEER.
 15. HOUSE LATERALS TO BE CONSTRUCTED WITH INVERTS AT PROPERTY LINE... FEET BELOW CURB GRADE EXCEPT AS NOTED.
 16. RESURFACE ALL TRENCHES WITHIN PAVED AREAS TO MEET L.A. COUNTY ROAD DEPT. OR CALIFORNIA STATE HIGHWAY REQUIREMENTS IN ACCORDANCE WITH PERMITS.
 17. FOR ALLOWABLE LEAKAGE TEST USE FORMULA NO. 2... SPECS. SEC. 54.
 18. ALL STATE AND LOCAL TRENCH SAFETY ORDERS WILL BE RIGIDLY ENFORCED.

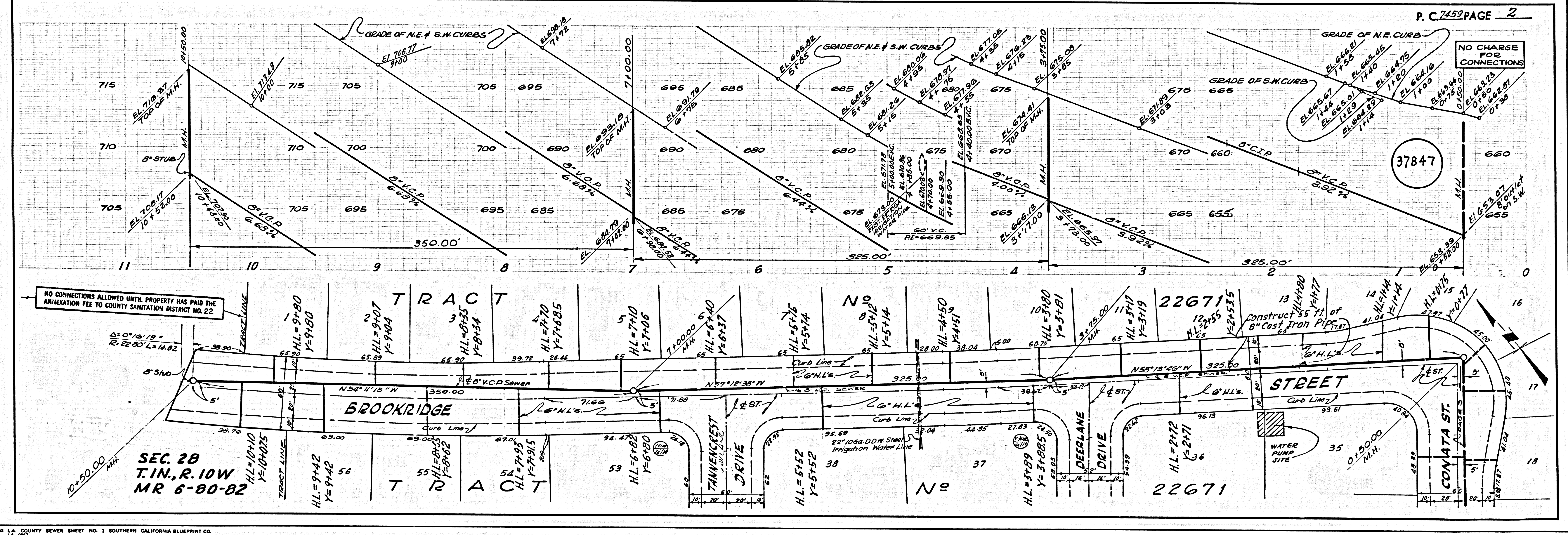
NO CONNECTIONS FOR THE DISPOSAL OF INDUSTRIAL WASTES SHALL BE MADE TO SEWERS SHOWN ON THESE DRAWINGS WITHOUT WRITTEN PERMISSION FROM THE CHIEF ENGINEER AND GENERAL MANAGER OF THE COUNTY SANITATION DISTRICTS.

COLLECT CHARGES AS INDICATED
W. G. Jan 10/26/65

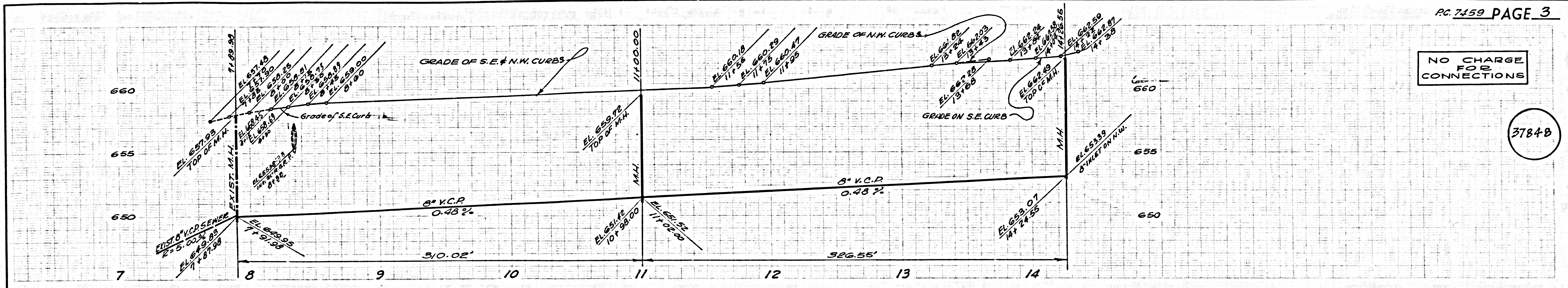
TRACT NO 22671
 PRIVATE CONTRACT NO. 7459
 W.S. 47-B1
 3 SHEETS, 6 PAGES (37846)
 SCALE: VERT. 1"=4' HORIZ. 1"=40' AUGUST, 1965
 PREPARED IN THE OFFICES OF
 CONSOLIDATED ENGINEERING COMPANY
 101 S. ROBERTSON BLVD., LOS ANGELES, CALIF.
 BY Enrique Arredondo
 REG. C.E. NO. 10915
 FOR LEGEND SEE PLAN NO. S-64

NOTE:
 GRADES TO WHICH THIS IMPROVEMENT IS TO BE CONSTRUCTED ARE SHOWN ON PLANS AND PROFILES. GRADE POINTS FOR TOP OF CURBS, CENTER LINE OF STREETS, OR CENTER LINE OF... ARE SHOWN BY CIRCLES ON PROFILES. AT ALL POINTS BETWEEN DESIGNATED POINTS THE GRADE SHALL BE ESTABLISHED SO AS TO... TO A STRAIGHT LINE DRAWN BETWEEN SAID DESIGNATED POINTS.
 ELEVATIONS ARE IN FEET ABOVE U.S.C. & G.S. MEAN...
 THIS DRAWING AND THE DATA HEREON ARE HEREBY MADE A PART OF THE SPECIFICATIONS...
 BEFORE WORK CAN BE STARTED THE CONTRACTOR MUST OBTAIN A PERMIT TO EXCAVATE IN CITY STREETS FROM THE L.A. COUNTY ROAD DEPT., DISTRICT OFFICE NO. 1... AND MAKE A DEPOSIT WITH THE CITY OF DUARTE...
 APPROVAL OF THIS PLAN BY THE CITY OF DUARTE DOES NOT CONSTITUTE A REPRESENTATION AS TO THE ACCURACY OF THE LOCATION OF OR THE EXISTENCE OR NON-EXISTENCE OF ANY UNDERGROUND UTILITY PIPE OR STRUCTURE WITHIN THE LIMITS OF THIS PROJECT. THIS NOTE APPLIES TO ALL PAGES.
 IF WORK IS TO BE DONE IN A STATE HIGHWAY, A PERMIT MUST BE OBTAINED FROM THE STATE OF CALIFORNIA, DIVISION OF HIGHWAYS, 126 SOUTH SPRING STREET, LOS ANGELES, CALIFORNIA.

CITY OF DUARTE CALIFORNIA
 JOHN A. LAMBIE, CITY ENGINEER J. D. PARKHURST, CHIEF ENGINEER
 CO. SAN. DIST. NO. 22
 APPROVED BY: *[Signature]* APPROVED BY: *[Signature]*
 SUBMITTED BY: *[Signature]* REGIONAL ENGINEER
 CHECKED BY: *[Signature]* REG. C.E. NO. 7152

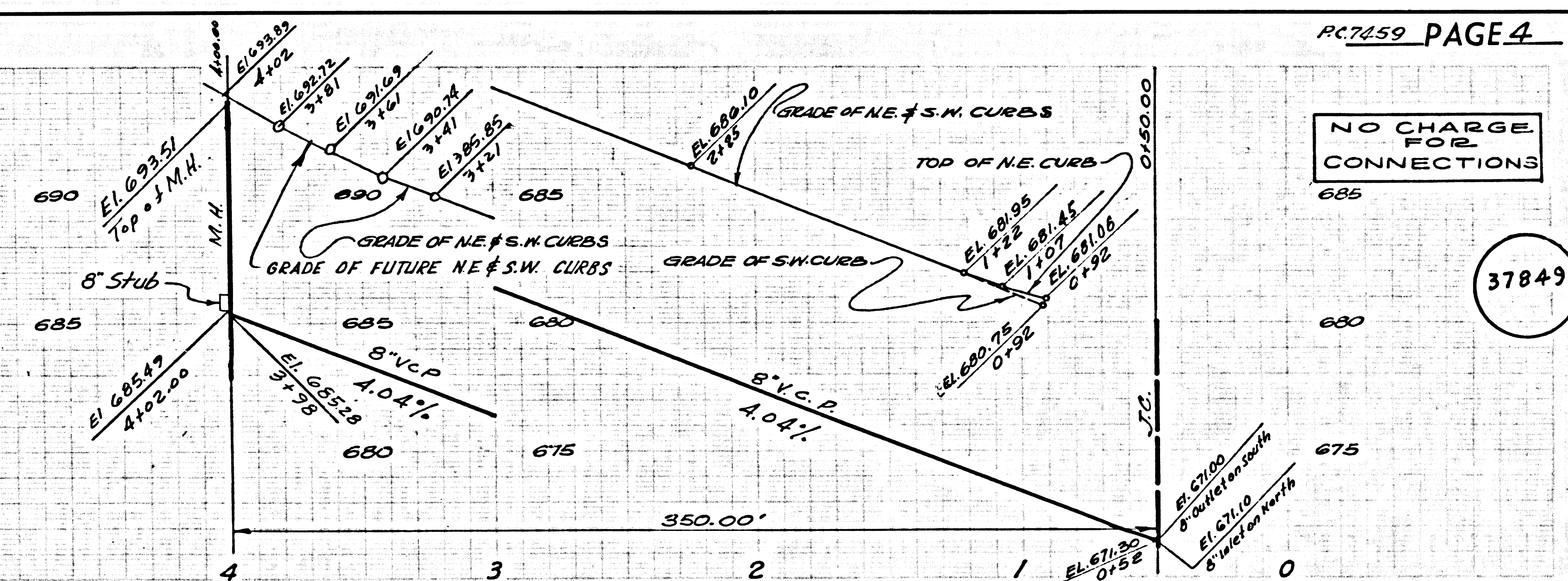
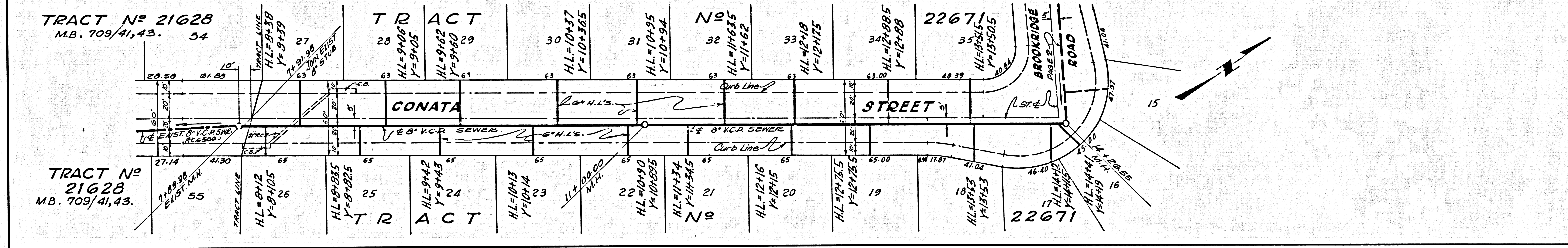


37847



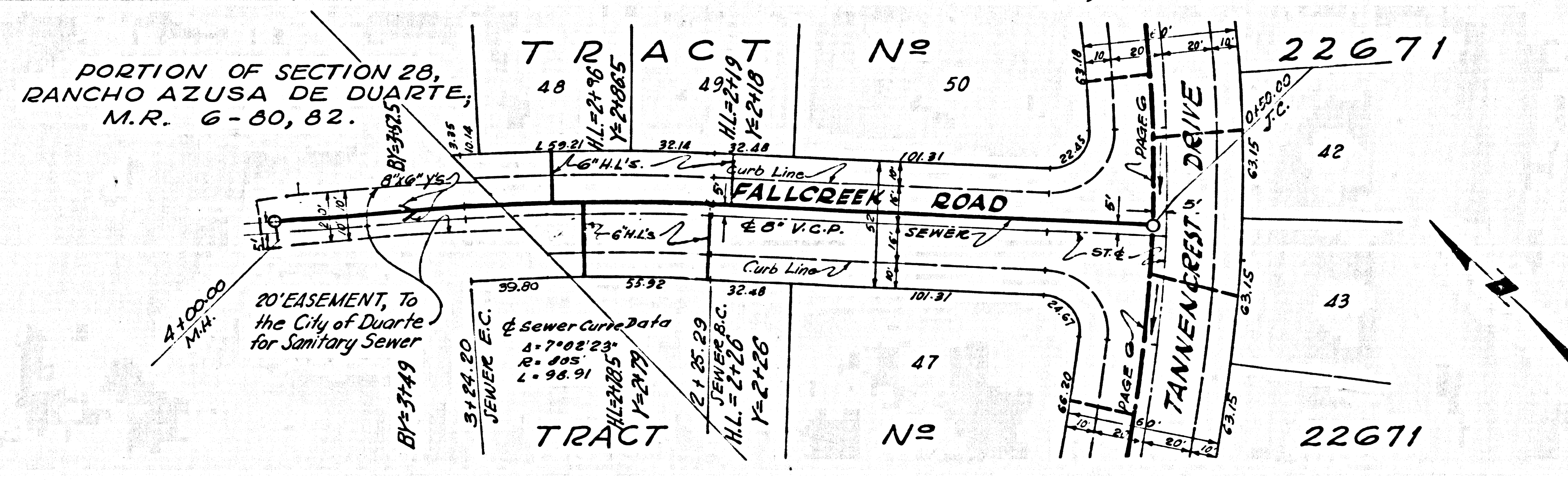
NO CHARGE FOR CONNECTIONS

37848



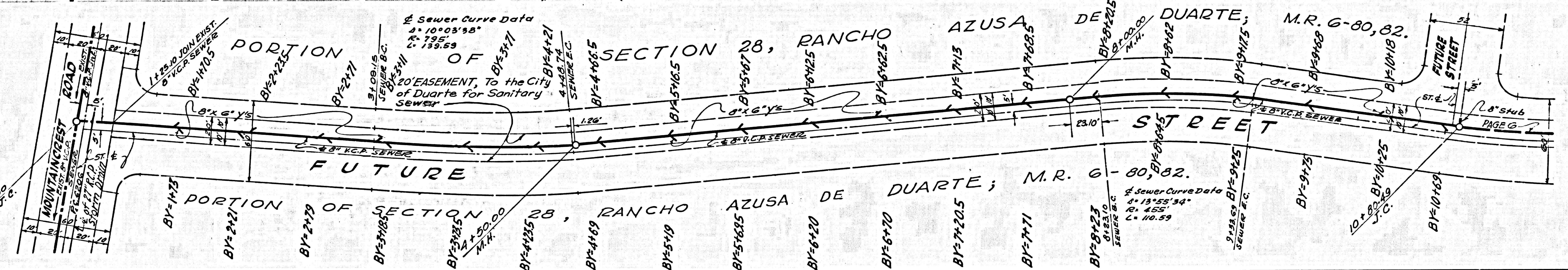
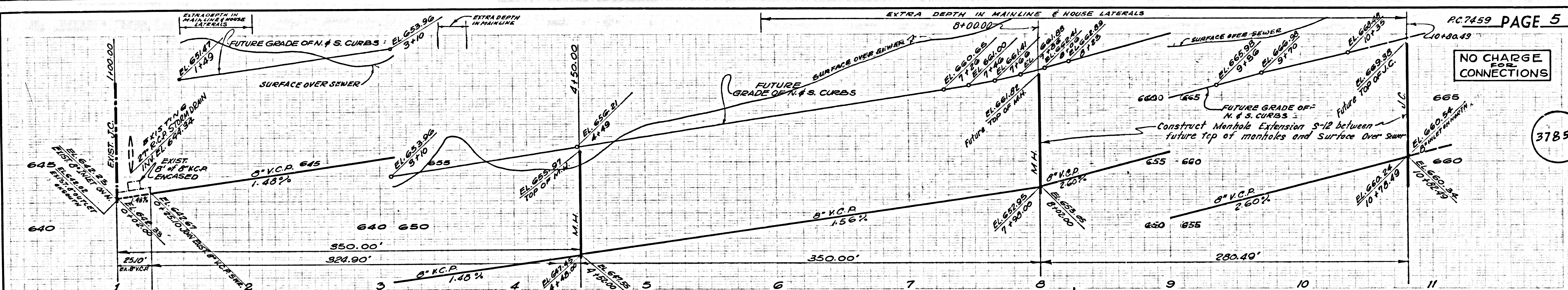
NO CHARGE FOR CONNECTIONS

37849



NO CHARGE FOR CONNECTIONS

37850



NO CHARGE FOR CONNECTIONS

37851

