

B.M. 575638 ELEV. 960.472
 Br. Cap in conc. Man. 6" dia. on
 CL Ventura Blvd. EC 531+93.11
 2.24 mi. W. Cornell Rd.
 MALIBU QUAD. 1960

DOUBLE SCALE
 CALABASAS BLDG. DIST. NO. 9.1

PROFILE, ALIGNMENT AND GRADE OF
 SANITARY SEWERS PAGE 1
 TO BE CONSTRUCTED IN

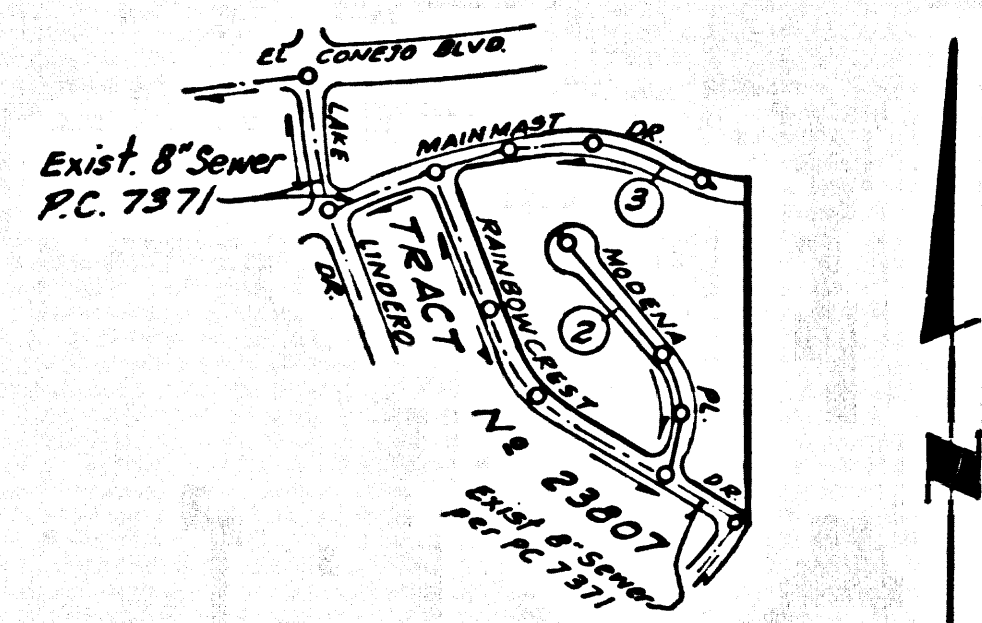
TRACT NO. 24549
 PRIVATE CONTRACT NO. 7461

W.S. 93
 2 SHEETS, 3 PAGES
 SCALE: VERT. 1"=8'
 HORIZ. 1"=40'
 Sept. 1965
 PREPARED IN THE OFFICES OF

MCINTIRE & QUIROS, INC.
 BY: *[Signature]*
 REG. C. E. NO. 14227

38441

FOR LEGEND SEE PLAN NO. S-1



INDEX MAP
 TRACT No. 24549
 PC 7461
 Scale: 1"=600'

Note: Numbers in circles indicate
 Page Number.
 M.L.'s for lots 1-3 & 20-36 along
 Rainbow Crest Dr. & lots 39-40 along
 Mainland Dr. built per PC 7371

ISSUE NO HOUSE CONNECTION
 PERMITS UNTIL PC. 7371
 IS COMPLETED.

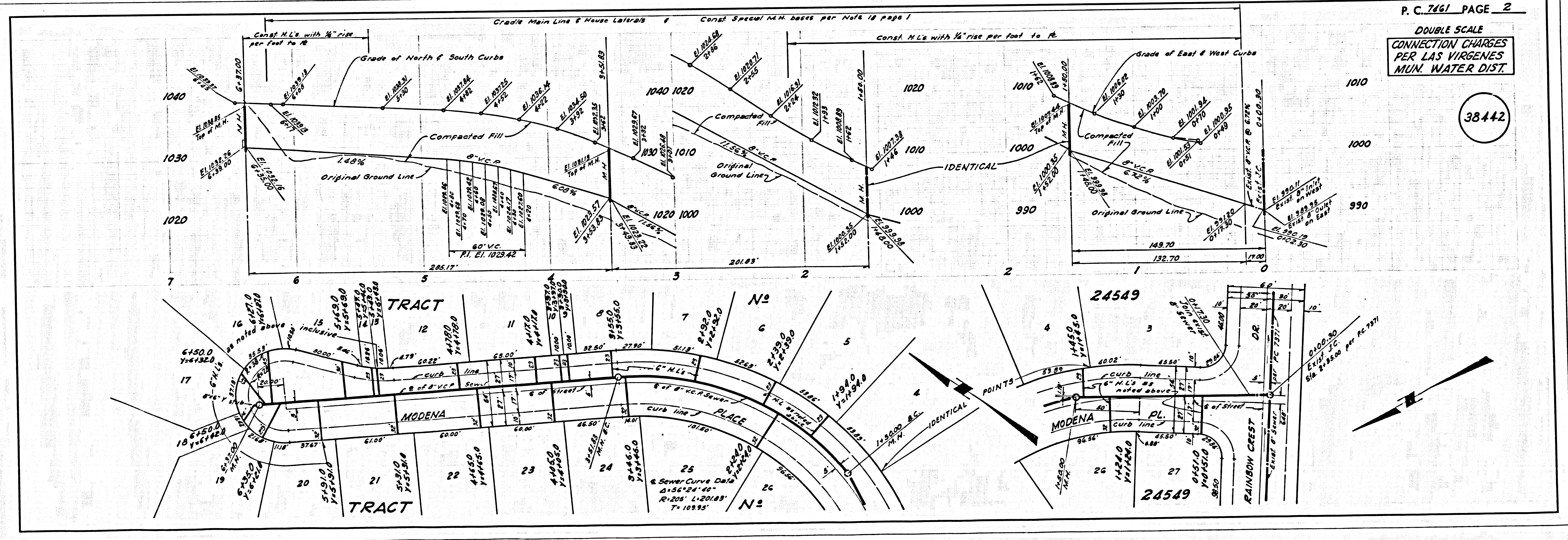
COLLECT CHARGES
 AS INDICATED

[Signature] 11/15/65

NOTE:
 GRADES TO WHICH THE IMPROVEMENT IS TO BE CONSTRUCTED ARE SHOWN ON PLANS AND PROFILES. GRADE POINTS FOR TOP OF CURBS, CENTER LINE OF STREETS, OR CENTER LINE OF ALLEYS ARE SHOWN BY CIRCLES ON PROFILES. AT ALL POINTS BETWEEN DESIGNATED POINTS THE GRADE SHALL BE ESTABLISHED TO AS TO CONFORM TO A STRAIGHT LINE DRAWN BETWEEN SAID DESIGNATED POINTS. ELEVATIONS ARE IN FEET ABOVE U.S.C. & G.S. MEAN SEA LEVEL DATUM OF 1929.
 THIS DRAWING AND THE DATA HEREON ARE HEREBY MADE A PART OF THE SPECIFICATIONS.
 THE CONTRACTOR SHALL BE RESPONSIBLE FOR OBTAINING ALL NECESSARY PERMITS TO EXCAVATE IN COUNTY STREETS FROM THE L.A. COUNTY ENGINEER AND SHALL BE PROSECUTED ONLY IN THE PRESENCE OF THE COUNTY ENGINEER.
 BEFORE WORK CAN BE STARTED, THE CONTRACTOR MUST OBTAIN A PERMIT TO EXCAVATE IN COUNTY STREETS FROM THE L.A. COUNTY ROAD DEPT., DISTRICT OFFICE NO. 3, AND PAY A FEE TO THE COUNTY ENGINEER, ROOM 350, COUNTY ENGINEERING BUILDING, THE WEST SECOND STREET OFFICE BUILDING, LOS ANGELES, CALIFORNIA.
 THE WORK SHALL BE DONE IN ACCORDANCE WITH THE SPECIFICATIONS AND RECORD PLANS.
 APPROVED BY THE COUNTY OF LOS ANGELES DOES NOT CONSTITUTE A REPRESENTATION AS TO THE ACCURACY OF THE LOCATION OF OR THE EXISTENCE OR NON-EXISTENCE OF ANY UNDERGROUND UTILITY PIPE, OR STRUCTURE WITHIN THE LIMITS OF THE PROJECT. THIS WORK APPLIES TO ALL PAGES.
 IF WORK IS TO BE DONE IN A STATE HIGHWAY, A PERMIT MUST BE OBTAINED FROM THE STATE OF CALIFORNIA, DIVISION OF HIGHWAYS, THE SOUTH SPRING STREET, LOS ANGELES, CALIFORNIA.

COUNTY OF LOS ANGELES, CALIFORNIA
 JOHN A. LAMBE, COUNTY ENGINEER
 LAS VIRGENES MUNICIPAL WATER DISTRICT
 APPROVED BY: *[Signature]*
 ASSISTANT MUNICIPAL ENGINEER
 APPROVED BY: *[Signature]*
 GENERAL MGR. - CHIEF ENGINEER
 SUBMITTED BY: *[Signature]*
 REGIONAL ENGINEER
 CHECKED BY: *[Signature]* 11-5-65
 REG. C.E. NO. 13663

J.N. 0366.36



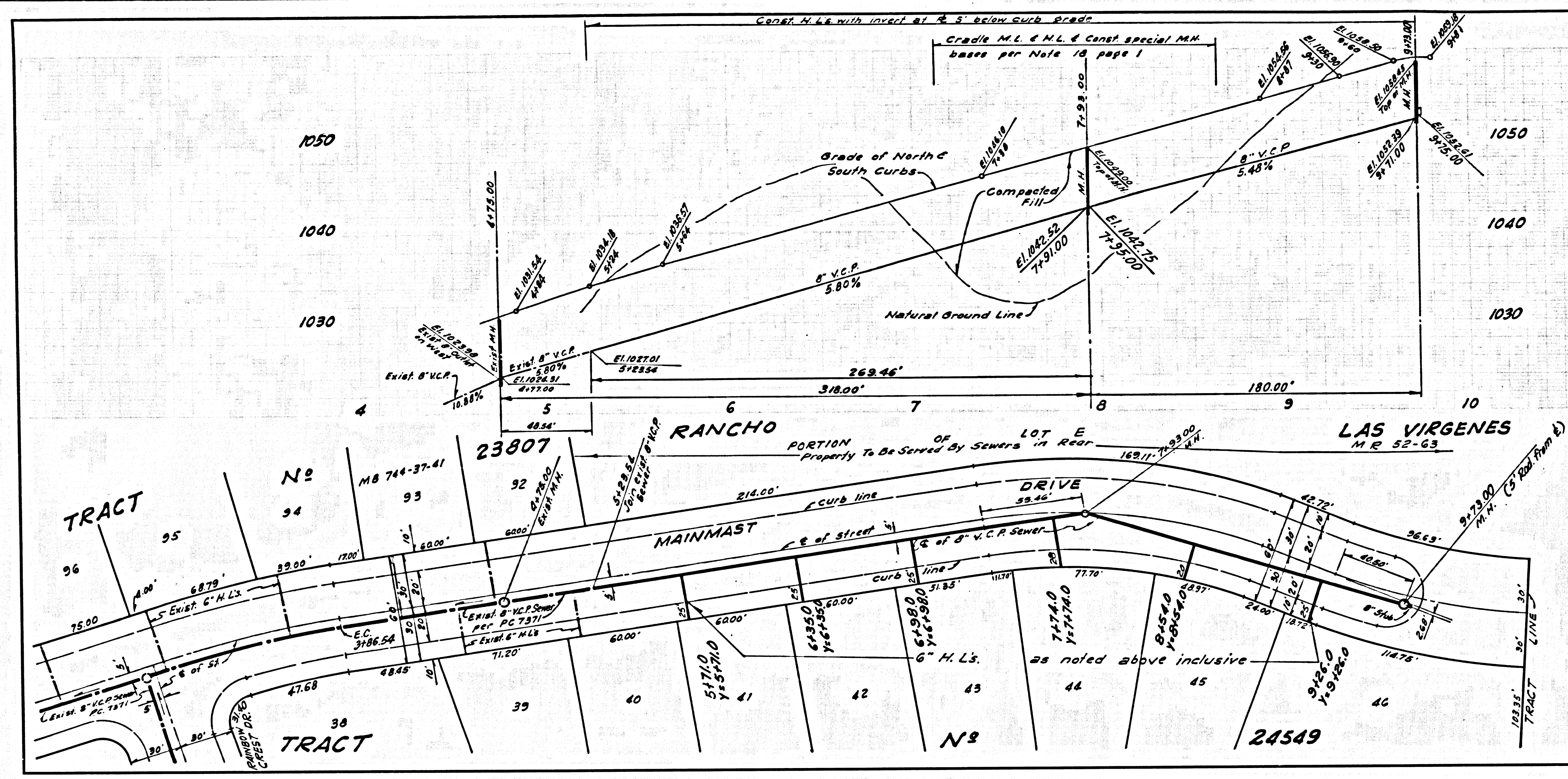
P. C. 7461 PAGE 2
 DOUBLE SCALE
 CONNECTION CHARGES
 PER LAS VIRGENES
 MUN. WATER DIST.

38442

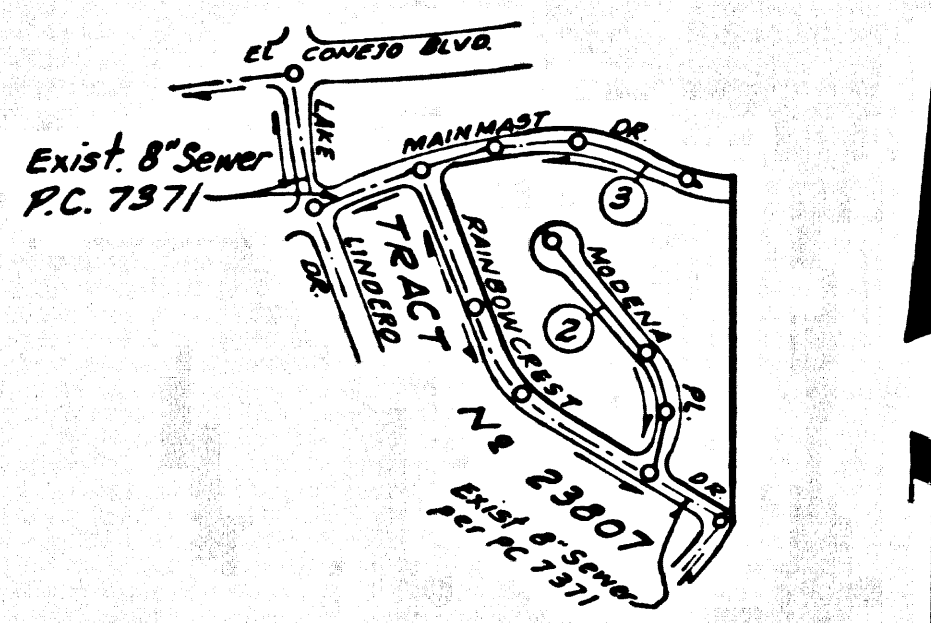
DOUBLE SCALE
CONNECTION CHARGES
PER LAS VIRGENES
MUN. WATER DIST.

38443

NOTE:
The soil between Sta. 5+23.54 and
Sta 5+73.00 is within the limits desig-
nated as Conejo Volcanic Rock per
Report of Stone Geological Service
Dated Dec. 3, 1966



B.M. SY 5638 ELEV. 960.472
 Br. Cap in conc. Man. 6" dia. on
 C/L Ventura Blvd. EC 531+93.11
 ± 24 mi. W. Cornell Rd.
 MALIBU QUAD. 19 60



INDEX MAP
 TRACT No 24549
 PC 7461
 Scale: 1"=400'

Note: Numbers in circles indicate
 Page Number.
 N.L.'s for lots 1-3 & 20-30 along
 Rainbow Crest Dr. & lots 29-40 along
 Mainmast Dr. built per PC 7371

ISSUE NO HOUSE CONNECTION
 PERMITS UNTIL P.C. 7371
 IS COMPLETED.

DOUBLE SCALE
 CALABASAS BLDG. DIST. NO. 9.1

- NOTES:
1. PROVIDE STAKES ON THE PROPERTY LINE OR PROPERTY LINES PRODUCED AT RIGHT ANGLES TO THE SEWER LINE AT THE CENTER LINE OF EACH MANHOLE.
 2. NO REPRESENTATIVE OF THE COUNTY ENGINEER WILL SURVEY OR LAY OUT ANY PORTION OF THE WORK.
 3. THE PRIVATE ENGINEER SHALL FURNISH THE COUNTY ENGINEER WITH GRADE SHEETS AND STATIONING FOR ALL HOUSE LATERALS AND "T" BRANCHES AND SHALL PROVIDE STAKES FOR THEM AT THEIR PROPER LOCATIONS WITH STATIONING PLAINLY MARKED. ALL HOUSE LATERALS SHALL BE CONSTRUCTED IN A STRAIGHT ALIGNMENT AT RIGHT ANGLES FROM THE MAIN LINE SEWER EXCEPT AS SHOWN ON THE PLANS. HOUSE LATERALS FROM CHIMNEYS SHALL NOT HAVE AN ANGLE OF LESS THAN 45° WITH THE MAIN LINE SEWER. ANY CHANGE IN ALIGNMENT SHALL BE REQUESTED IN WRITING BY THE PRIVATE ENGINEER.
 4. THE PRIVATE ENGINEER SHALL FURNISH THE HOUSE LATERAL DEPTH AT THE PROPERTY LINE BELOW THE TOP OF CURB ELEVATION FOR EACH HOUSE LATERAL ON THE GRADE SHEET.
 5. NO REVISIONS SHALL BE MADE IN THESE PLANS WITHOUT THE APPROVAL OF THE COUNTY ENGINEER.
 6. THE CONTRACTOR SHALL NOTIFY THE CONSTRUCTION DIVISION BY TELEPHONE, MADISON 9-4742, EXT. 81581, AT LEAST TWENTY-FOUR HOURS BEFORE STARTING ANY WORK UNDER THIS CONTRACT.
 7. MANHOLES SHALL BE BRICK SEWER STRUCTURES PER S-3. PRECAST CONCRETE MANHOLES PER S-5 OR S-4 MAY BE USED AS AN ALTERNATE IN LOCATIONS APPROVED BY THE COUNTY ENGINEER.
 8. USE STANDARD MANHOLE FRAMES AND COVERS, S-15, EXCEPT AS NOTED.
 9. MANHOLE TOPS IN UNIMPROVED RIGHTS-OF-WAY TO BE SIX INCHES ABOVE FINISHED GRADE.
 10. USE EXTRA STRENGTH PIPE. ALL PIPE IS STANDARD DEPTH EXCEPT AS NOTED.
 11. USE MECHANICAL COMPRESSION JOINTS FOR ALL V.C.P. JOINTS PER SPEC. S, SECS. 36, 46 & 49.
 12. IF A POWER POLE IS WITHIN THREE FEET OF THE SEWER, THE SEWER SHALL BE ENCASED, PER S-23, TWO FEET ON EACH SIDE FROM THE POINT OF INTERFERENCE.
 13. IF DURING THE COURSE OF CONSTRUCTION IT IS DETERMINED THAT THERE IS LESS THAN FOUR FEET OF COVER OVER THE TOP OF A MAIN LINE OR HOUSE LATERAL V.C.P. SEWER WHICH IS NOT INDICATED ON THE PLANS, THE PIPE SHALL BE ENCASED PER S-23, UNLESS OTHERWISE APPROVED BY THE COUNTY ENGINEER.
 14. HOUSE LATERALS TO BE CONSTRUCTED WITH INVERTS AT PROPERTY LINE 4 FEET BELOW CURB GRADE EXCEPT AS NOTED.
 15. RESURFACE ALL TRENCHES WITHIN PAVED AREAS TO MEET L.A. COUNTY ROAD DEPT. OR CALIFORNIA STATE HIGHWAY REQUIREMENTS IN ACCORDANCE WITH PERMITS.
 16. FOR ALLOWABLE LEAKAGE TEST USE FORMULA NO. 2, SPEC. S, SEC. 54.
 17. ALL STATE AND LOCAL TRENCH SAFETY ORDERS WILL BE STRICTLY ENFORCED.

COLLECT CHARGES
 AS INDICATED
 John A. McQuinn 11/3/65

PROFILE, ALIGNMENT AND GRADE OF
 SANITARY SEWERS PAGE 1
 TO BE CONSTRUCTED IN

TRACT NO. 24549
 PRIVATE CONTRACT NO. 7461

W.S. 98
 2 SHEETS, 3 PAGES
 SCALE: VERT. 1"=4' HORIZ. 1"=40'
 Sept., 1965
 PREPARED IN THE OFFICES OF

MCINTIRE & QUIROS, INC.
 REG. C. E. NO. 14207

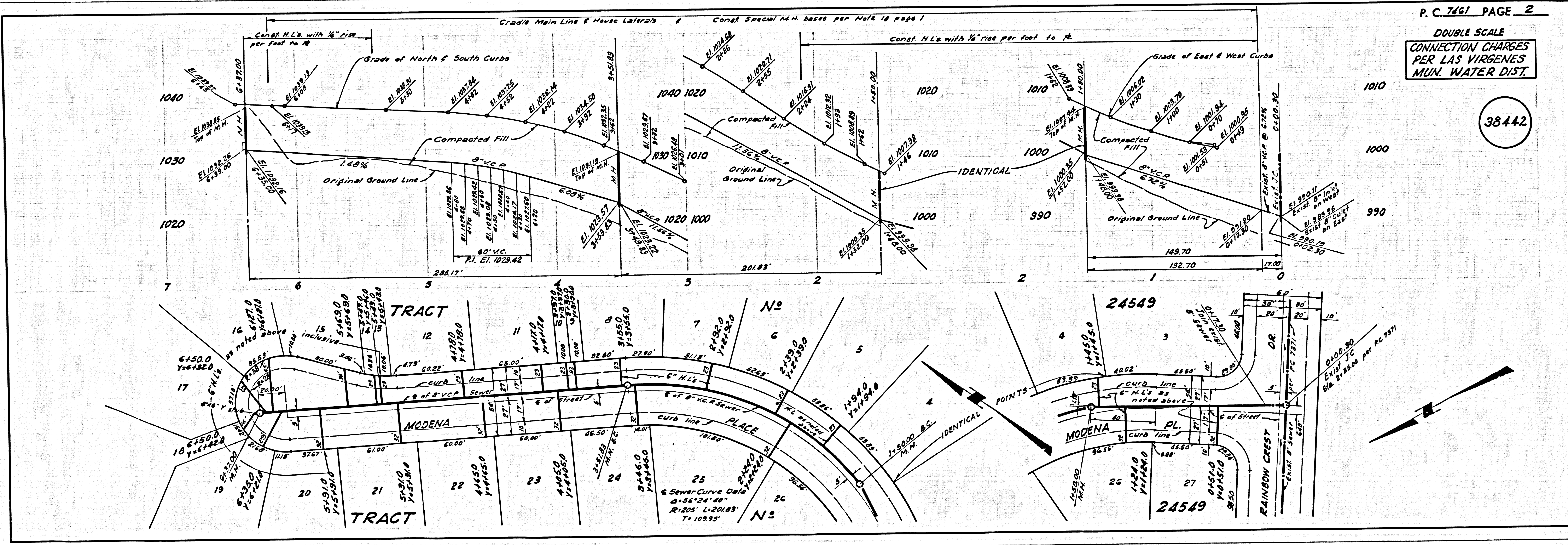
38441

FOR LEGEND SEE PLAN NO. S-1

NOTES:
 GRADES TO WHICH THIS IMPROVEMENT IS TO BE CONSTRUCTED ARE SHOWN ON PLANS AND PROFILES. GRADE POINTS FOR TOP OF CURBS, CENTER LINE OF STREETS, OR CENTER LINE OF ALLEYS ARE SHOWN BY CIRCLES ON PROFILES. BY ALL POINTS BETWEEN DESIGNATED POINTS THE GRADE SHALL BE ESTABLISHED SO AS TO CONFORM TO A STRAIGHT LINE DRAWN BETWEEN SAID DESIGNATED POINTS. ELEVATIONS ARE IN FEET ABOVE U.S.C. & G.S. SEA LEVEL DATUM OF 1929. THIS DRAWING AND THE DATA HEREON ARE HEREBY MADE A PART OF THE SPECIFICATIONS. THE WORK SHALL BE CONSTRUCTED ACCORDING TO STANDARD SPECIFICATIONS DATED MARCH 22, 1962, ON FILE IN THE OFFICE OF THE COUNTY ENGINEER AND SHALL BE PROSECUTED ONLY IN THE PRESENCE OF THE COUNTY ENGINEER. BEFORE WORK CAN BE STARTED, THE CONTRACTOR MUST OBTAIN A PERMIT TO EXCAVATE IN COUNTY STREETS FROM THE L.A. COUNTY ROAD DEPT., DISTRICT OFFICE NO. 7, 1100 WEST SECOND STREET, LOS ANGELES, CALIFORNIA, AND PAY A FEE TO THE COUNTY ENGINEER, ROOM 300, COUNTY ENGINEERING BUILDING, 100 WEST SECOND STREET, LOS ANGELES, CALIFORNIA. FAILURE BY THE CONTRACTOR TO OBTAIN SUCH PERMITS SHALL BE CONSIDERED A BREACH OF THIS CONTRACT. APPROVAL OF THIS PLAN BY THE COUNTY OF LOS ANGELES DOES NOT CONSTITUTE A REPRESENTATION AS TO THE ACCURACY OF THE LOCATION OR OF THE EXISTENCE OR NON-EXISTENCE OF ANY UNDERGROUND UTILITY PIPE, OR STRUCTURE WITHIN THE LIMITS OF THIS PROJECT. THIS NOTE APPLIES TO ALL PAGES. IF WORK IS TO BE DONE IN A STATE HIGHWAY, A PERMIT MUST BE OBTAINED FROM THE STATE OF CALIFORNIA, DIVISION OF HIGHWAYS, 120 SOUTH SPRING STREET, LOS ANGELES, CALIFORNIA.

COUNTY OF LOS ANGELES, CALIFORNIA
 JOHN A. LAMBE, COUNTY ENGINEER
 LAS VIRGENES MUNICIPAL WATER DISTRICT
 APPROVED BY: [Signature] ASSISTANT SANITATION ENGINEER
 SUBMITTED BY: [Signature] REGIONAL ENGINEER
 CHECKED BY: [Signature] 11-5-65
 REG. C. E. NO. 10553

J. N. 0366.36



P. C. 7461 PAGE 2

DOUBLE SCALE
 CONNECTION CHARGES
 PER LAS VIRGENES
 MUN. WATER DIST.

38442

DOUBLE SCALE
CONNECTION CHARGES
PER LAS VIRGENES
MUN. WATER DIST.

38443

NOTE:
The soil between Sta. 3+23.54 and
Sta. 3+73.00 is within the limits desig-
nated as Congo Volcanic Rock per
Report of State Geological Service
Dated Dec. 8, 1954

