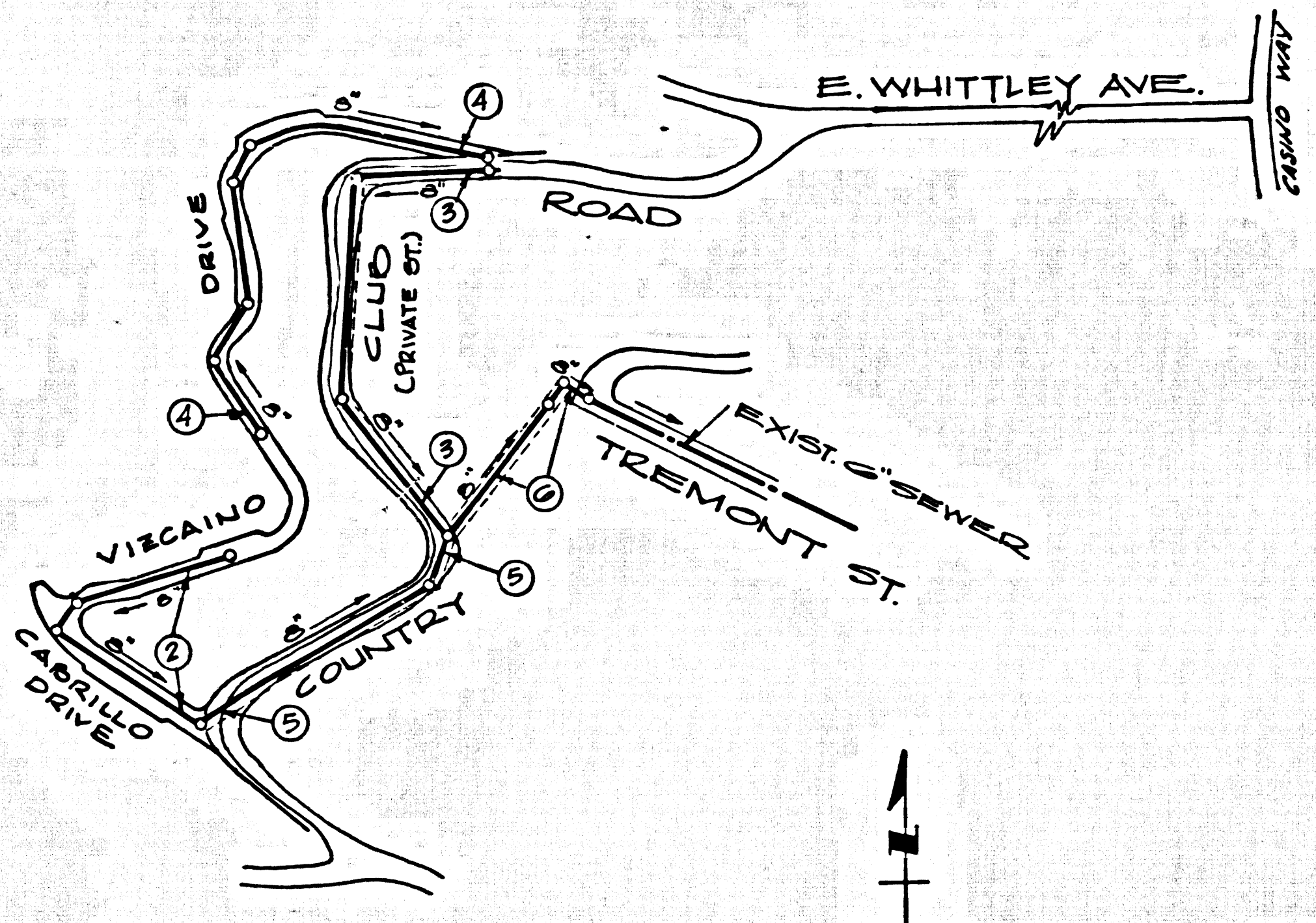
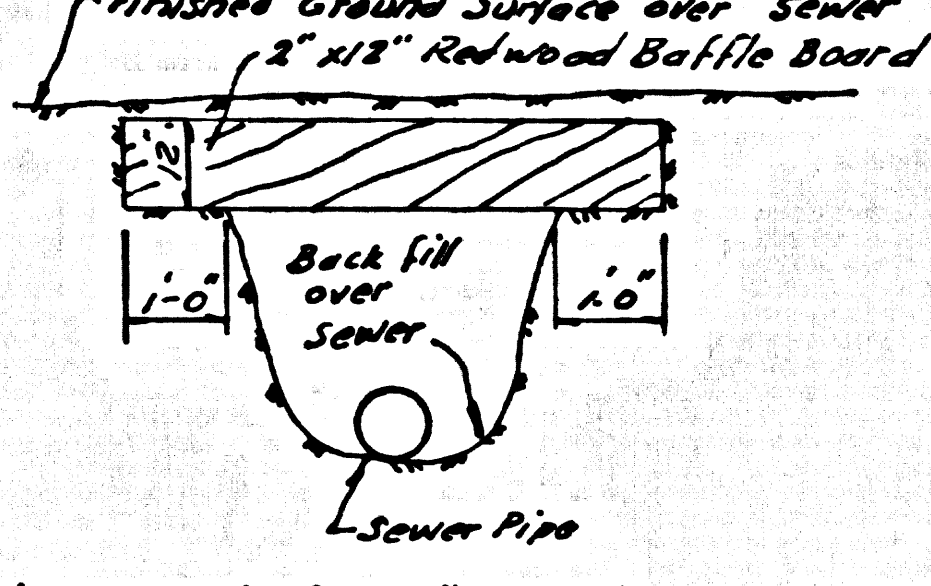


B.M. ELEV. 104.48
 3" N/O P.H. IN FRONT
 OF HOUSE NO. 117 211
 VIEJELLOU AVE., 200' E/O
 MARILLA AVE. QUAD. 19



INDEX MAP
 SCALE: 1" = 200'

2" x 12" REDWOOD BAFFLE BOARD DETAIL



- Each end of baffle board will extend one foot into undisturbed ground.
- Baffles will be so spaced that the top of the upper baffle shall be level with the bottom of the upper.
- The upper layer of back fill to be 1 foot min. of top soil. Top soil shall be tamped in place and planted with mustard weed seed and adequately watered until growth is restored.

CITY OF AVALON BLDG. DIST. NO. 12.01

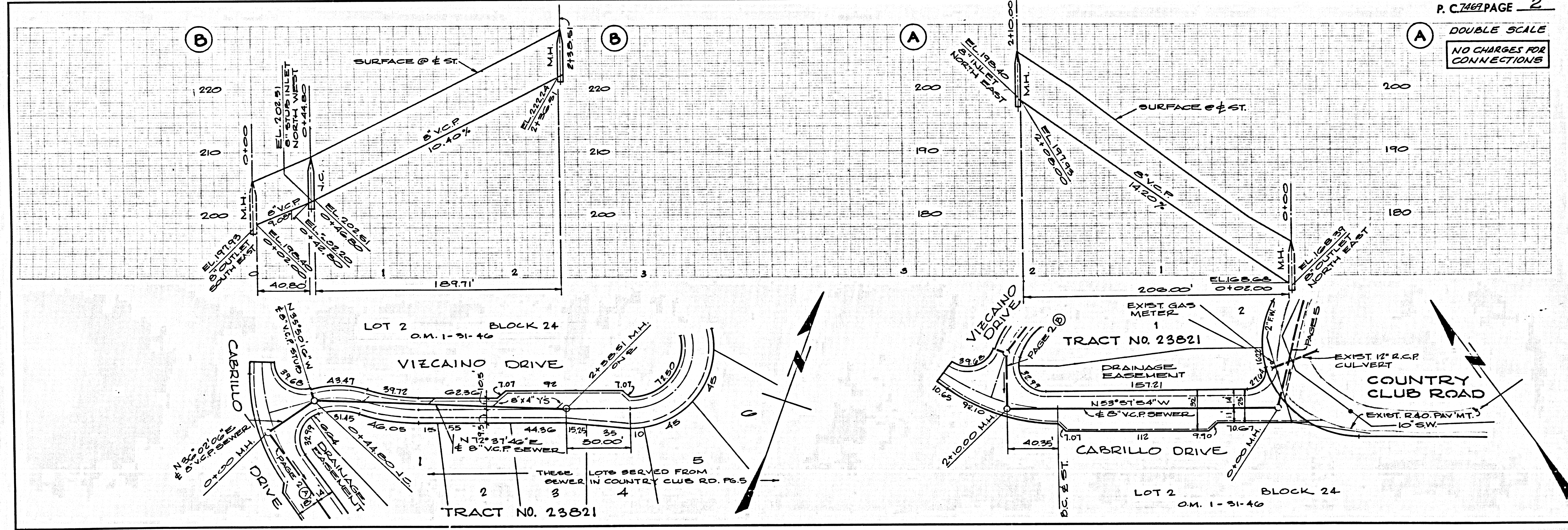
PROFILE ALIGNMENT AND GRADE OF
ABANDONED SANITARY SEWERS PAGE 1
 TO BE CONSTRUCTED IN
 TRACT NO. 23821
 PRIVATE CONTRACT NO. 7469
 W.S. 29
 3 SHEETS, 6 PAGES
 SCALE: VERT. 1" = 4' HORIZ. 1" = 40'
 PREPARED BY THE OFFICE OF
Edward J. Lander
 REG. C. E. NO. 2683

- NOTES:
- PROVIDE STAKES ON THE PROPERTY LINE OR PROPERTY LINES PRODUCED AT RIGHT ANGLES TO THE SEWER LINE AS THE CENTER LINE OF EACH MANHOLE.
 - NO REPRESENTATIVE OF THE CITY ENGINEER WILL SURVEY OR LAY OUT ANY PORTION OF THE WORK.
 - THE PRIVATE ENGINEER SHALL FURNISH THE CITY ENGINEER WITH GRADE SHEETS AND STATIONING FOR ALL HOUSE LATERALS AND Y BRANCHES AND SHALL PROVIDE STAKES FOR THEM AT THEIR PROPER LOCATION WITH STATIONING NEARLY MARKED. ALL HOUSE LATERALS SHALL BE CONSTRUCTED IN A STRAIGHT ALIGNMENT AT RIGHT ANGLES FROM THE MAIN LINE SEWER EXCEPT AS SHOWN ON THE PLANS. HOUSE LATERALS FROM CHIMNEYS SHALL NOT HAVE AN ANGLE OF LESS THAN 45° WITH THE MAIN LINE SEWER. ANY CHANGE IN ALIGNMENT SHALL BE REQUESTED BY WRITING BY THE PRIVATE ENGINEER.
 - THE PRIVATE ENGINEER SHALL FURNISH THE HOUSE LATERAL DEPTH AT THE PROPERTY LINE BELOW THE TOP OF CURB ELEVATION FOR EACH HOUSE LATERAL ON THE GRADE SHEET.
 - NO DIVERSIONS SHALL BE MADE IN THESE PLANS WITHOUT THE APPROVAL OF THE CITY ENGINEER.
 - THE CONTRACTOR SHALL NOTIFY THE CONSTRUCTION DIVISION BY TELEPHONE, MADISON 9-4742, EXT. 3148, AT LEAST TWENTY-FOUR HOURS BEFORE STARTING ANY WORK UNDER THIS CONTRACT.
 - MANHOLES SHALL BE BRICK SEWER STRUCTURES PER S. 2 PRECAST CONCRETE MANHOLES PER S. 5 OR S. 6 MAY BE USED AS AN ALTERNATE IN LOCATIONS APPROVED BY THE CITY ENGINEER.
 - USE STANDARD MANHOLE FRAMES AND COVERS, S. 15, EXCEPT AS NOTED.
 - MANHOLE TOPS IN UNIMPROVED RIGHTS-OF-WAY TO BE SIX INCHES ABOVE FINISHED GRADE.
 - USE EXTRA STRENGTH PIPE. ALL PIPE IS STANDARD DEPTH EXCEPT AS NOTED.
 - USE MECHANICAL COMPRESSION JOINTS FOR ALL V.C.P. JOINTS PER SPECS., SECT. 34 & 48, 49
 - WHERE OVER-GROUND WATER IS ENCOUNTERED DURING THE CONSTRUCTION OF THE SEWER, THE U.C.A. JOINTS SHALL BE OF JOINT-CONSTRUCTION PER SPECS., SECT. 34 & 48, 49. UNDESIRABLE CONSTRUCTION METHODS PER SPECS., SECT. 34 & 48.
 - IF A POWER POLE IS WITHIN THREE FEET OF THE SEWER, THE SEWER SHALL BE ENCASED, PER S. 28 TWO FEET ON EACH SIDE FROM THE POINT OF INTERFERENCE.
 - IF DURING THE COURSE OF CONSTRUCTION IT IS DETERMINED THAT THERE IS LESS THAN FOUR FEET OF COVER OVER THE TOP OF A MAIN LINE OR HOUSE LATERAL V.C.P. SEWER WHICH IS NOT INDICATED ON THE PLANS, THE PIPE SHALL BE ENCASED PER S. 25 UNLESS OTHERWISE APPROVED BY THE CITY ENGINEER.
 - HOUSE LATERALS TO BE CONSTRUCTED WITH INVERTS AT PROPERTY LINE, 5' FEET BELOW FIN. GRADE EXCEPT AS NOTED.
 - REPLACE ALL TRINCHES WITHIN PAVED AREAS TO MEET CITY ROAD DEPT. OR CALIFORNIA STATE HIGHWAY REQUIREMENTS IN ACCORDANCE WITH PERMITS.
 - FOR ALLOWABLE LEAKAGE TEST USE FORMULA NO. 2, SPECS., SECT. 34
 - ALL STATE AND LOCAL TRENCH SAFETY ORDERS WILL BE STRICTLY ENFORCED.

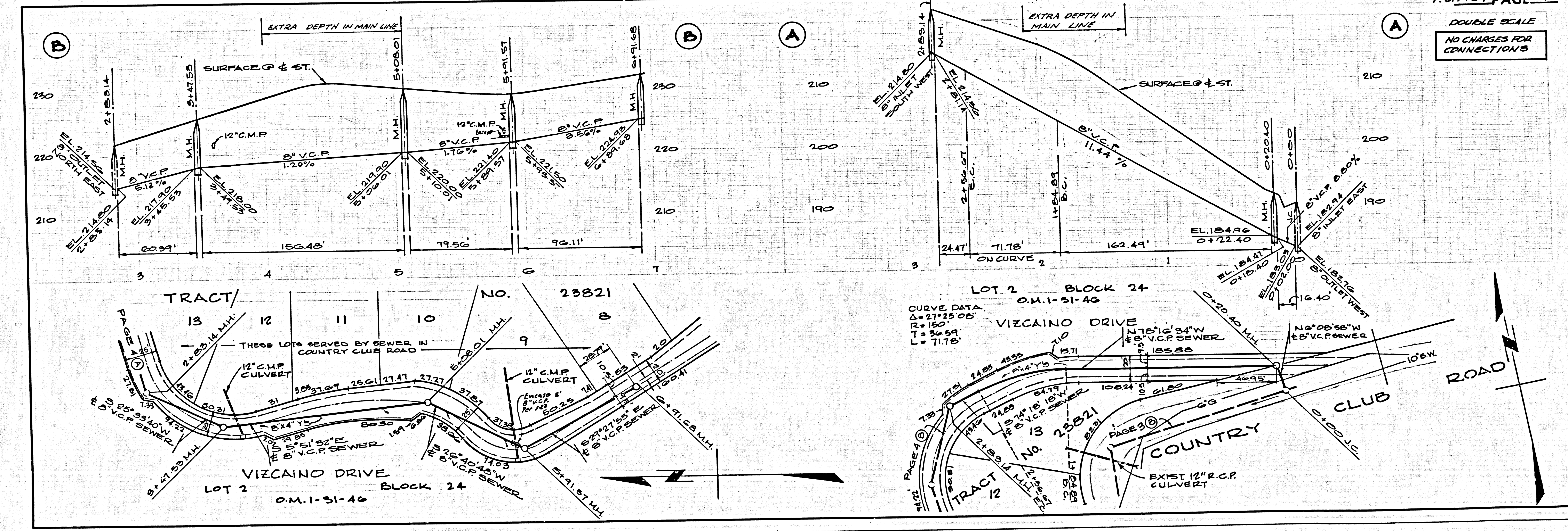
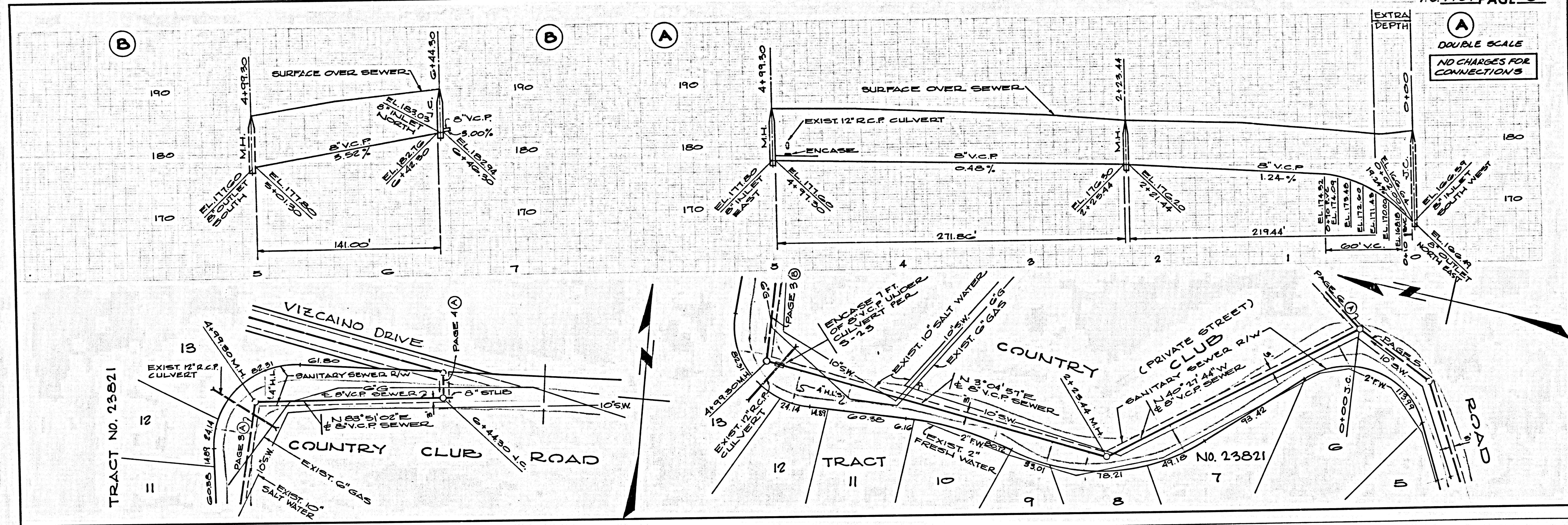
NOTE:
 GRADES TO WHICH THIS IMPROVEMENT IS TO BE CONSTRUCTED ARE SHOWN ON PLANS AND PROFILE. GRADE POINTS FOR TOP OF CURBS, CENTER LINE OF STREETS, OR CENTER LINE OF ALLEYS ARE SHOWN BY CIRCLES ON PROFILE. AT ALL POINTS BETWEEN DESIGNATED POINTS THE GRADE SHALL BE ESTABLISHED SO AS TO CONFORM TO A STRAIGHT LINE DRAWN BETWEEN SAID DESIGNATED POINTS. ELEVATIONS ARE IN FEET ABOVE U.S.C. & G.S. SEA LEVEL DATUM OF 1929.
 THE DRAWING AND THE DATA HEREON ARE HEREBY MADE A PART OF THE SPECIFICATIONS.
 WORK SHALL BE CONSTRUCTED ACCORDING TO STANDARD SPECIFICATIONS DATED MAY 23, 1962, ON FILE IN THE OFFICE OF THE CITY ENGINEER AND SHALL BE PROSECUTED ONLY IN THE PRESENCE OF THE CITY ENGINEER.
 BEFORE WORK CAN BE STARTED, THE CONTRACTOR MUST OBTAIN A PERMIT TO EXCAVATE IN CITY STREETS FROM THE CITY ROAD DEPT., DISTRICT OFFICE NO. 1, 1005 METROPOLIS, SUPPORT TO COVER THE COST OF CONSTRUCTION INSPECTION AND RECORD PLANS.
 APPROVAL OF THIS PLAN BY THE CITY OF AVALON DOES NOT CONSTITUTE A REPRESENTATION AS TO THE ACCURACY OF THE LOCATION OF OR THE EXISTENCE OR NON-EXISTENCE OF ANY UNDERGROUND UTILITY PIPE, OR STRUCTURE WITHIN THE LIMITS OF THE PROJECT. THIS NOTE APPLIES TO ALL PAGES.
 IF WORK IS TO BE DONE IN A STATE HIGHWAY, A PERMIT MUST BE OBTAINED FROM THE STATE OF CALIFORNIA, DIVISION OF HIGHWAYS, 120 SOUTH SPRING STREET, LOS ANGELES, CALIFORNIA.

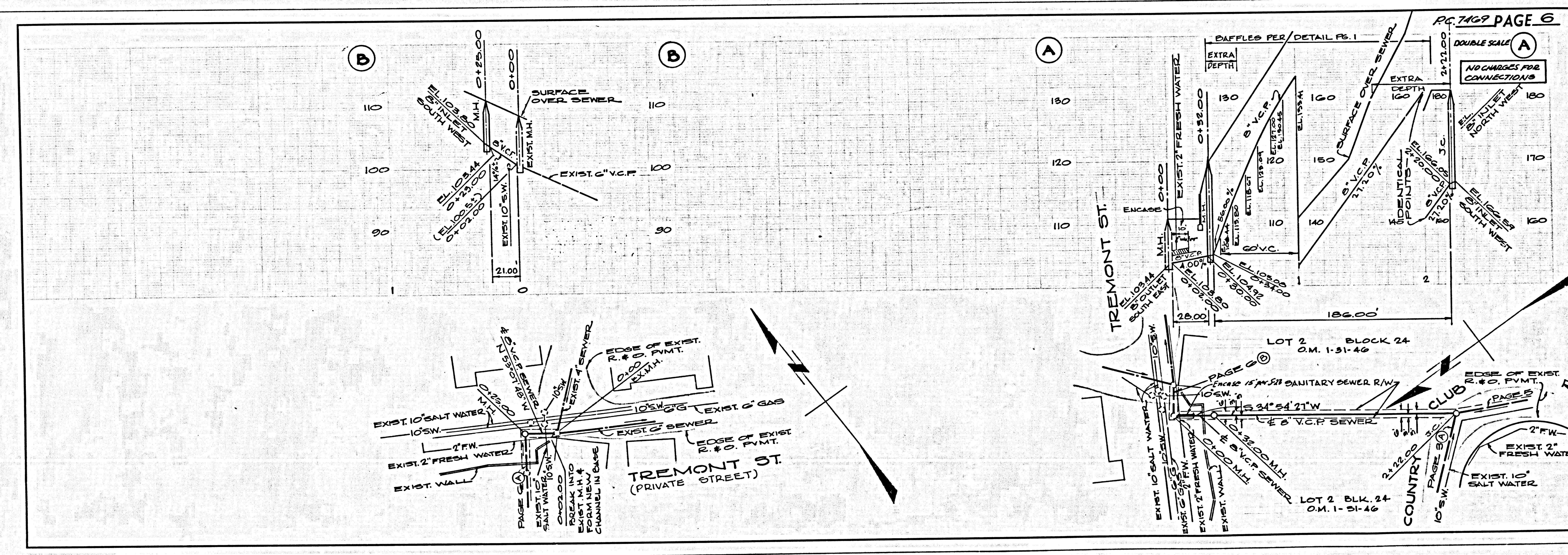
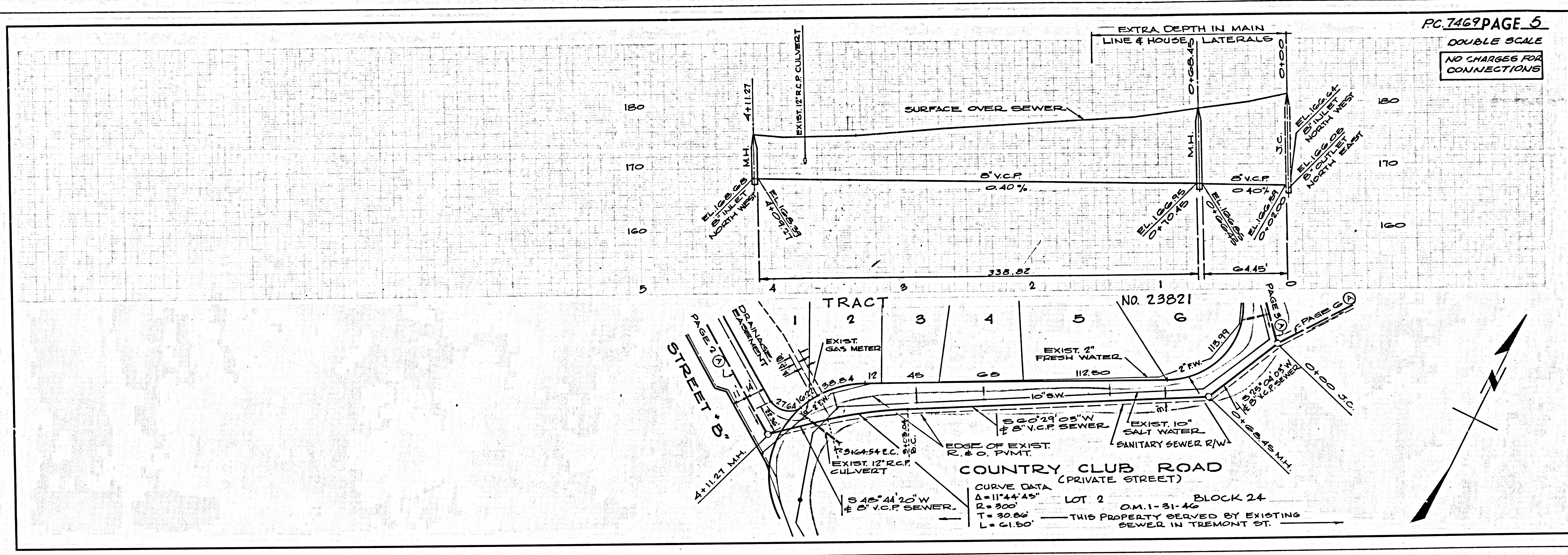
CITY OF AVALON, CALIFORNIA
 JOHN A. LAMBE, CITY ENGINEER
 APPROVED BY: *Rita S. Eiler* ASSISTANT SANITATION ENGINEER
 APPROVED BY: *Melvin J. Rendon* SANTA CATALINA ISLAND CO.
 SUBMITTED BY: *John C. ...* REGIONAL ENGINEER
 CHECKED BY: *Edward J. Lander* REG. C. E. NO. 2683
 APPROVED BY: *Arnold C. Lander* CITY OF AVALON

COLLECT CHARGES AS INDICATED
Ed Lander 1/26/66

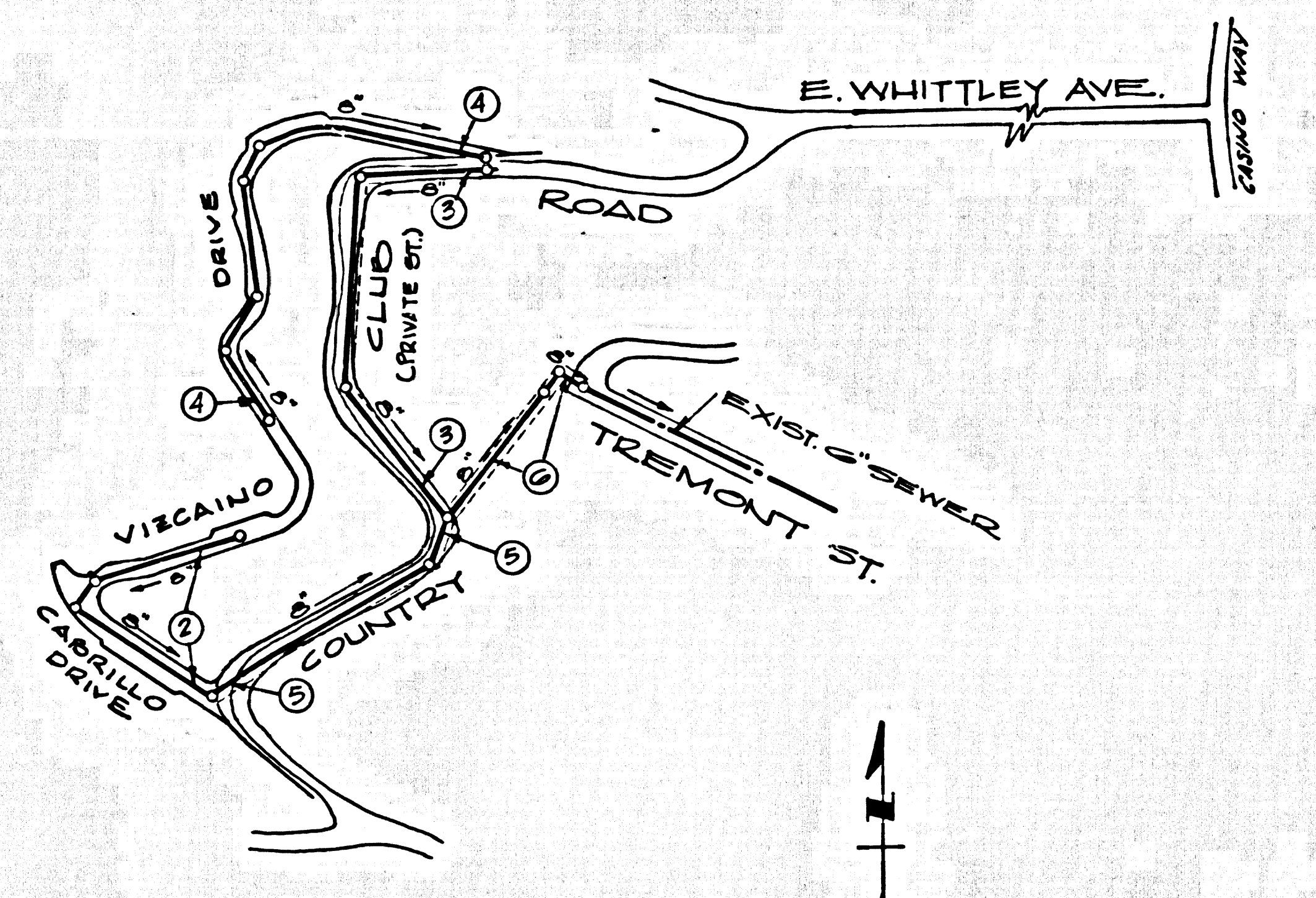


P. C. 7469 PAGE 2
 DOUBLE SCALE
 NO CHARGES FOR CONNECTIONS



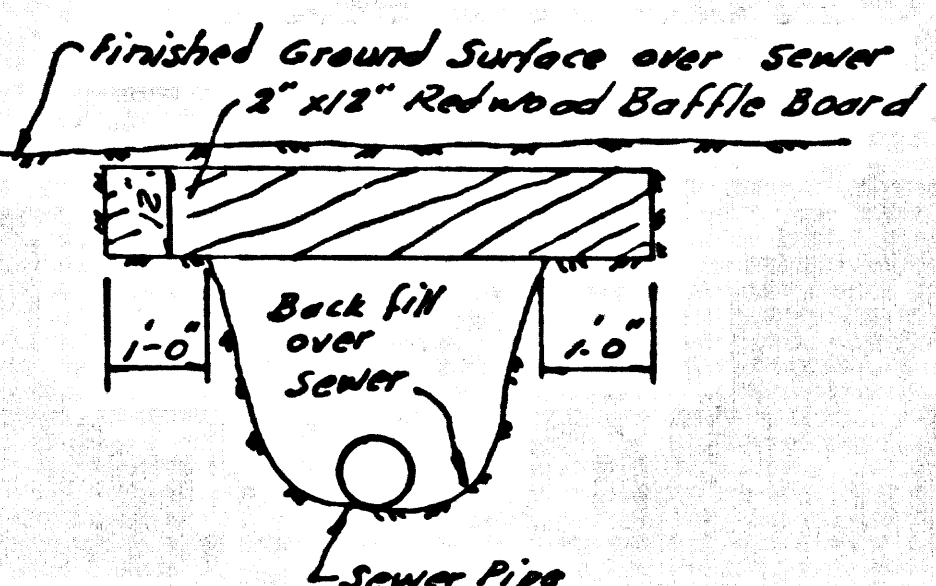


B.M. ELEV. 104.48
 3" NO. FH. IN FRONT
 OF HOUSE NO. 117 ON
 VIUDELOU AVE., 200' E/O
 MARILLA AVE., QUAD. 19



INDEX MAP
 SCALE: 1"=200'

2" x 12" REDWOOD Baffle BOARD DETAIL



- Each end of baffle board will extend one foot into undisturbed ground.
- Baffle will be so spaced that the top of the lower baffle shall be level with the bottom of the upper.
- The upper layer of back fill to be 1 foot min. of top soil. The soil shall be formed in place and planted with mustard weed seed and adequately watered until growth is restored.

CITY OF AVALON BLDG. DIST. NO. 12.01

PROFILE ALIGNMENT AND GRADE OF **P.C. 7469**
SANITARY SEWERS PAGE 1
 TO BE CONSTRUCTED IN
TRACT No 23821
PRIVATE CONTRACT NO. 7469

ABANDONED
 7-23-68

- NOTE:**
- PROVIDE STAKES ON THE PROPERTY LINE OR PROPERTY LINES PRODUCED AT RIGHT ANGLES TO THE SEWER LINE AS THE CENTER LINE OF EACH MANHOLE.
 - NO REPRESENTATIVE OF THE CITY ENGINEER WILL SURVEY OR LAY OUT ANY PORTION OF THE WORK.
 - THE PRIVATE ENGINEER SHALL FURNISH THE CITY ENGINEER WITH GRADE SHEETS AND STATIONING FOR ALL HOUSE LATERALS AND Y BRANCHES AND SHALL PROVIDE STAKES FOR THEM AT THREE FEET LOCATIONS WITH STATIONING PLAINLY MARKED. ALL HOUSE LATERALS SHALL BE CONSTRUCTED IN A STRAIGHT ALIGNMENT AT RIGHT ANGLES FROM THE MAIN LINE EXCEPT AS SHOWN ON THE PLANS. HOUSE LATERALS FROM CHIMNEYS SHALL NOT HAVE AN ANGLE OF LESS THAN 45° WITH THE MAIN LINE SEWER. ANY CHANGE IN ALIGNMENT SHALL BE REQUESTED IN WRITING BY THE PRIVATE ENGINEER.
 - THE PRIVATE ENGINEER SHALL FURNISH THE HOUSE LATERAL DEPTH AT THE PROPERTY LINE BELOW THE TOP OF CURB ELEVATION FOR EACH HOUSE LATERAL ON THE GRADE SHEET.
 - NO REVISIONS SHALL BE MADE IN THESE PLANS WITHOUT THE APPROVAL OF THE CITY ENGINEER.
 - THE CONTRACTOR SHALL NOTIFY THE CONSTRUCTION DIVISION BY TELEPHONE, MADISON 9-4741, EXT. 8148, AT LEAST TWENTY-FOUR HOURS BEFORE STARTING ANY WORK UNDER THIS CONTRACT.
 - MANHOLES SHALL BE BRICK SEWER STRUCTURES PER S. 5. PRECAST CONCRETE MANHOLES PER S. 5 OR S. 6 MAY BE USED AS AN ALTERNATE IN LOCATIONS APPROVED BY THE CITY ENGINEER.
 - USE STANDARD MANHOLE FRAMES AND COVERS, S-15, EXCEPT AS NOTED.
 - USE STANDARD TOPS IN UNIMPROVED LOCATIONS OF WAY TO BE SEE INCHES ABOVE FINISHED GRADE.
 - USE EXTRA STRENGTH PIPE. ALL PIPE IS STANDARD DEPTH EXCEPT AS NOTED.
 - USE MECHANICAL COMPRESSION JOINTS FOR ALL V.C.P. JOINTS PER SPECS., SECS. 34 & 48, & 49.
 - WHEN OVER-GRADE-WAY IS CONSTRUCTED THE CONSTRUCTION OF THE SEWER, THE V.C.P. JOINTS SHALL BE OF JOINT-TYPE PER SPECS., SECS. 34 & 48, & 49, AND MECHANICAL COMPRESSION JOINTS PER SPECS., SEC. 34.
 - IF A POWER POLE IS WITHIN THREE FEET OF THE SEWER, THE SEWER SHALL BE ENCASED, PER S. 23 TWO FEET ON EACH SIDE FROM THE POINT OF INTERFERENCE.
 - IF DURING THE COURSE OF CONSTRUCTION IT IS DETERMINED THAT THERE IS LESS THAN FOUR FEET OF COVER OVER THE TOP OF A MAIN LINE OR HOUSE LATERAL V.C.P. SEWER WHICH IS NOT INDICATED ON THE PLANS, THE PIPE SHALL BE ENCASED PER S. 23 UNLESS OTHERWISE APPROVED BY THE CITY ENGINEER.
 - HOUSE LATERALS TO BE CONSTRUCTED WITH INVERTS AT PROPERTY LINE. 5' FEET BELOW 1" FINISH GRADE EXCEPT AS NOTED.
 - RESURFACE ALL TRENCHES WITHIN PAVED AREAS TO MEET CITY ROAD DEPT. OR CALIFORNIA STATE HIGHWAY REQUIREMENTS IN ACCORDANCE WITH PERMITS.
 - FOR ALLOWABLE LEAKAGE TEST USE FORMULA NO. 2 PER SPECS., SEC. 34.
 - ALL STATE AND LOCAL TRENCH SAFETY ORDERS WILL BE STRICTLY ENFORCED.

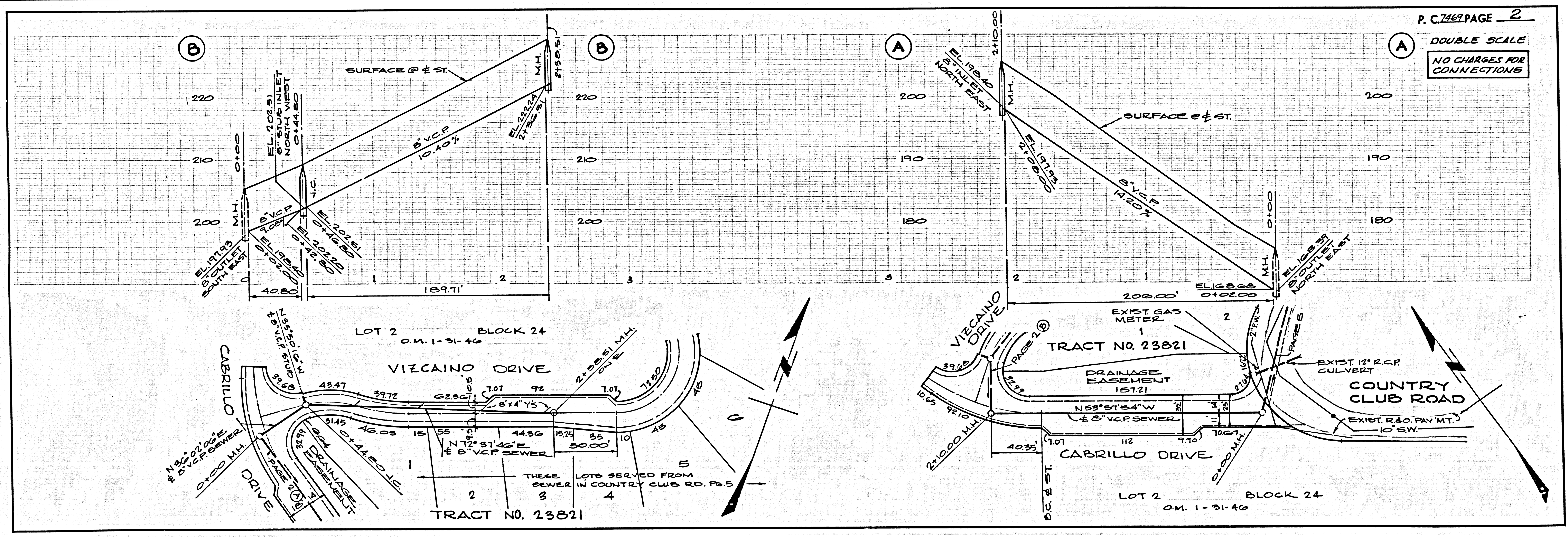
W.S. 29
 3 SHEETS, 6 PAGES
 SCALE: VERT. 1"=6'
 HORIZ. 1"=40'
 SEPT., 1965
 PREPARED IN THE OFFICES OF

By: Edward J. Lambie
 REG. C. E. NO. 2683
 FOR LEGEND SEE PLAN NO. S-64

NOTE:
 GRADES TO WHICH THIS IMPROVEMENT IS TO BE CONSTRUCTED ARE SHOWN ON PLANS AND PROFILE. GRADE POINTS FOR TOP OF CURB, CENTER LINE OF STREETS, OR CENTER LINE OF ALLEYS ARE SHOWN BY CIRCLES ON PROFILE. AT ALL POINTS BETWEEN DESIGNATED POINTS THE GRADE SHALL BE ESTABLISHED SO AS TO COMFORM TO A STRAIGHT LINE DRAWN BETWEEN SAID DESIGNATED POINTS. ELEVATIONS ARE IN FEET ABOVE U.S.C. & G.S. SEA LEVEL DATUM OF 1929. THE DRAWING AND THE DATA HEREON ARE HEREBY MADE A PART OF THE SPECIFICATIONS. WORK SHALL BE CONSTRUCTED ACCORDING TO STANDARD SPECIFICATIONS DATED MAY 22, 1962, ON FILE IN THE OFFICE OF THE CITY ENGINEER AND SHALL BE PROSECUTED ONLY IN THE PRESENCE OF THE CITY ENGINEER. BEFORE WORK CAN BE STARTED, THE CONTRACTOR MUST OBTAIN A PERMIT TO EXCAVATE IN CITY STREETS FROM THE CITY ROAD DEPT., REFERENCE OFFICE NO. _____ AND PAY A FEE TO THE CITY ENGINEER. SUPPORT TO COVER THE COST OF CONSTRUCTION INSPECTION AND RECORD PLANS. APPROVAL OF THIS PLAN BY THE CITY OF AVALON DOES NOT CONSTITUTE A REPRESENTATION AS TO THE ACCURACY OF THE LOCATION OF OR THE EXISTENCE OR NON-EXISTENCE OF ANY UNDEGROUND UTILITY PIPE OR STRUCTURE WITHIN THE LIMITS OF THE PROJECT. THIS NOTE APPLIES TO ALL PAGES. IF WORK IS TO BE DONE IN A STATE HIGHWAY, A PERMIT MUST BE OBTAINED FROM THE STATE OF CALIFORNIA, DIVISION OF HIGHWAYS, 138 SOUTH SPRING STREET, LOS ANGELES, CALIFORNIA.

CITY OF AVALON, CALIFORNIA
 JOHN A. LAMBIE, CITY ENGINEER
 APPROVED BY: Richard S. Hill ASSISTANT SANITATION ENGINEER
 APPROVED BY: Micela J. Fenwick SANTA CATALINA ISLAND CO.
 SUBMITTED BY: J. C. ... REGIONAL ENGINEER
 CHECKED BY: ... REG. C. E. NO. 10853
 APPROVED BY: Annal C. ... CITY OF AVALON

COLLECT CHARGES AS INDICATED
... 1/26/66



P.C. 7469 PAGE 2
 DOUBLE SCALE
 NO CHARGES FOR CONNECTIONS

