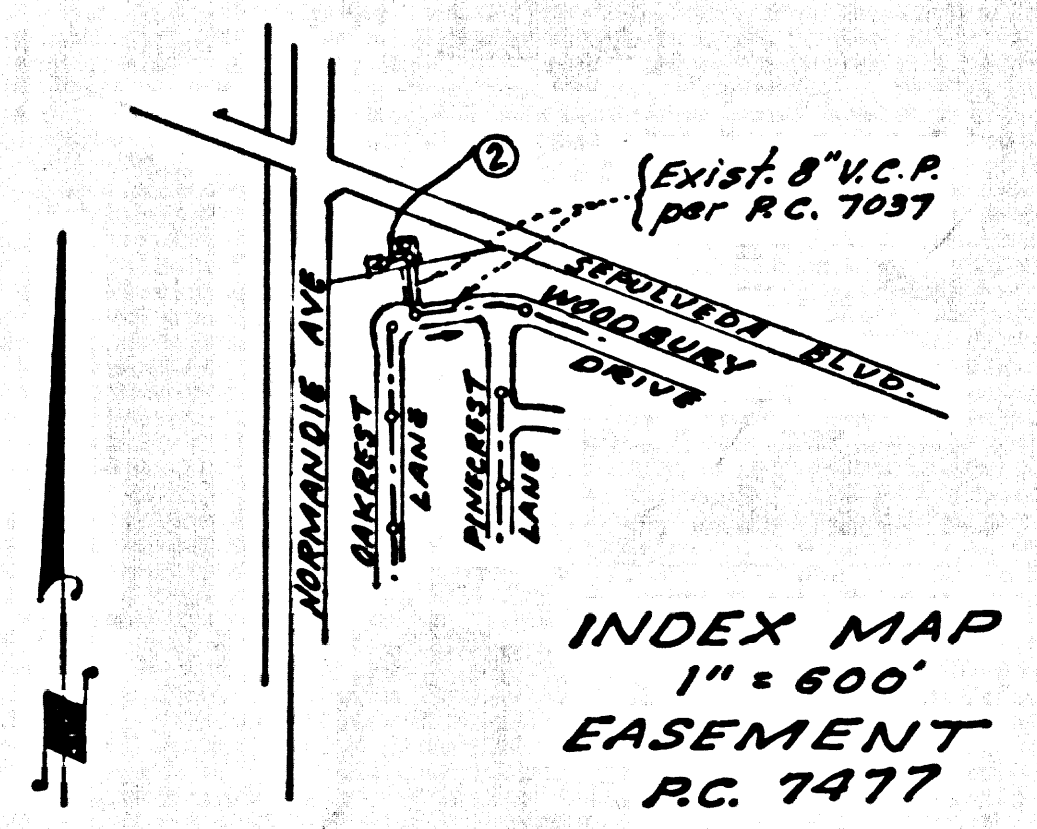


B.M. SY-3071-A ELEV. 33-103  
 Ft. Square Head Spike Near  
 center of curb return N.E.  
 corner Lomita Blvd. & Vermont Ave.  
 1" North of L.S.T.  
 BASE LINE QUAD. 19 55

11. The existence and location of any underground utility pipes, conduits or structures shown on these plans are obtained by a search of the available records. To the best of our knowledge there are no existing utility except as shown on these plans. The contractor is required to take due precautionary measures to protect the utility lines shown and any other lines not on record or not shown on these drawings. The contractor further assumes all liability and responsibility for the utility pipes, conduits, lines or structure shown or not on these drawings.



REVISION: 11-4-65  
 Changed sewer grade to conform  
 to existing surface over sewer  
 0+00. to 1+02.96.  
 Approved: *Bernard A. Volney*  
 Reg. C.E. No. 10633

LOMITA BLDG. DIST. NO. 12

PROFILE, ALIGNMENT AND GRADE OF P.C. 7477  
 SANITARY SEWERS PAGE 1

TO BE CONSTRUCTED IN  
 SANITARY SEWER  
 EASEMENT  
 40 NORMANDIE AVE. 37684

PRIVATE CONTRACT NO. 7477

W.S. 28  
 1 SHEET, 2 PAGES

SCALE: VERT. 1" = 4' HORIZ. 1" = 40' September 19, 1965

PREPARED IN THE OFFICES OF  
 E. L. PEARSON & ASSOCIATES

By: *Thomas C. Clark*  
 REG. C. E. NO. 3757

FOR LEGEND SEE PLAN NO. S-1

- NOTES:
1. PROVIDE STAKES ON THE PROPERTY LINE OR PROPERTY LINES PRODUCED AT RIGHT ANGLES TO THE SEWER LINE AT THE CENTER LINE OF EACH MANHOLE.
  2. NO REPRESENTATIVES OF THE COUNTY ENGINEER WILL SURVEY OR LAY OUT ANY PORTION OF THE WORK.
  3. THE PRIVATE ENGINEER SHALL FURNISH THE COUNTY ENGINEER WITH GRADE SHEETS AND STATIONING FOR ALL HOUSE LATERALS AND "T" BRANCHES AND SHALL PROVIDE STAKES FOR THEM AT THEIR PROPER LOCATIONS WITH STATIONING PLAINLY MARKED. ALL HOUSE LATERALS SHALL BE CONSTRUCTED IN A STRAIGHT ALIGNMENT AT RIGHT ANGLES FROM THE MAIN LINE SEWER EXCEPT AS SHOWN ON THE PLANS. HOUSE LATERALS FROM CHIMNEYS SHALL NOT HAVE AN ANGLE OF LESS THAN 45° WITH THE MAIN LINE SEWER. ANY CHANGE IN ALIGNMENT SHALL BE REQUESTED IN WRITING BY THE PRIVATE ENGINEER.
  4. THE PRIVATE ENGINEER SHALL FURNISH THE HOUSE LATERAL DEPTH AT THE PROPERTY LINE BELOW THE TOP OF CURB ELEVATION FOR EACH HOUSE LATERAL ON THE GRADE SHEET.
  5. NO REVISIONS SHALL BE MADE IN THESE PLANS WITHOUT THE APPROVAL OF THE COUNTY ENGINEER.
  6. THE CONTRACTOR SHALL NOTIFY THE CONSTRUCTION DIVISION BY TELEPHONE, MADISON 9-4747, EXT. 81531, AT LEAST TWENTY-FOUR HOURS BEFORE STARTING ANY WORK UNDER THIS CONTRACT.
  7. MANHOLES SHALL BE BRICK SEWER STRUCTURES PER S. 2. UNLESS CONCRETE MANHOLES PER S-8 OR S-4 MAY BE USED AS AN ALTERNATE IN LOCATIONS APPROVED BY THE COUNTY ENGINEER.
  8. USE STANDARD MANHOLE FRAMES AND COVERS, S-18, EXCEPT AS NOTED.
  9. MANHOLE TOPS IN UNIMPROVED RIGHTS-OF-WAY TO BE SIX INCHES ABOVE FINISHED GRADE.
  10. USE EXTRA STRENGTH PIPE. ALL PIPE IS STANDARD DEPTH EXCEPT AS NOTED.
  11. USE MECHANICAL COMPRESSION JOINTS FOR ALL V.C.P. JOINTS PER SPEC., SECT. 34, 48 & 49.
  12. IF A COVER HOLE IS WITHIN THREE FEET OF THE SEWER, THE SEWER SHALL BE ENCASED, PER S-23, TWO FEET ON EACH SIDE FROM THE POINT OF INTERFERENCE.
  13. IF DURING THE COURSE OF CONSTRUCTION IT IS DETERMINED THAT THERE IS LESS THAN FOUR FEET OF COVER OVER THE TOP OF A MAIN LINE OR HOUSE LATERAL V.C.P. SEWER WHICH IS NOT INDICATED ON THE PLANS, THE PIPE SHALL BE ENCASED PER S-23, UNLESS OTHERWISE APPROVED BY THE COUNTY ENGINEER.
  14. HOUSE LATERALS TO BE CONSTRUCTED WITH INVERTS AT PROPERTY LINE & FEET BELOW CURB GRADE EXCEPT AS NOTED.
  15. SURFACE ALL TRENCHES WITHIN PAVED AREAS TO MEET L.A. COUNTY ROAD DEPT. OR CALIFORNIA STATE HIGHWAY DEPARTMENTMENTS, IN ACCORDANCE WITH PERMITS.
  16. FOR ALLOWABLE LEAKAGE TEST USE FORMULA NO. 2, SPEC. S, SEC. 4.
  17. ALL STATE AND LOCAL TRENCH SAFETY ORDERS WILL BE STRICTLY ENFORCED.

NO CONNECTIONS FOR THE DISPOSAL OF INDUSTRIAL WASTES SHALL BE MADE TO SEWERS SHOWN ON THESE DRAWINGS WITHOUT WRITTEN PERMISSION FROM THE CHIEF ENGINEER AND GENERAL MANAGER OF THE COUNTY SANITATION DISTRICTS.

APPROVED: *J. D. Parkhurst* 10/18/65  
 Industrial Waste Division

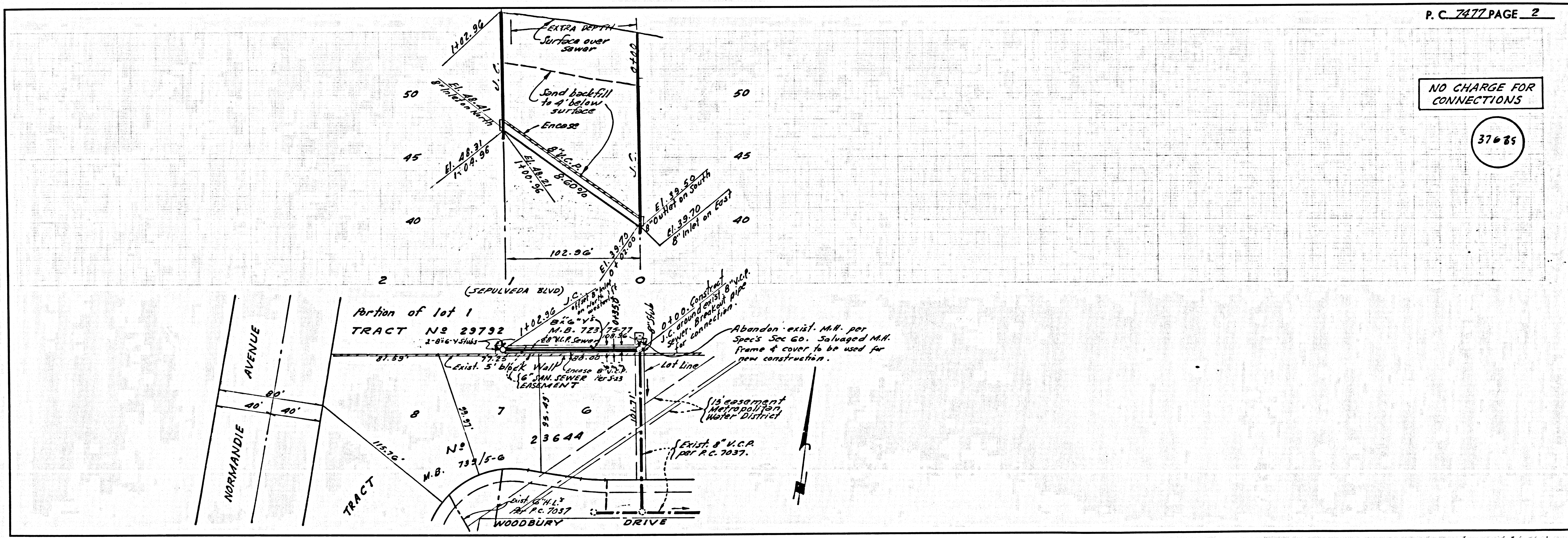
COLLECT CHARGES AS INDICATED  
*L. G. Carter* 10/18/65

NOTE:  
 GRADES TO WHICH THE IMPROVEMENT IS TO BE CONSTRUCTED ARE SHOWN ON PLANS AND PROFILES. GRADE POINTS FOR TOP OF CURB, CENTER LINE OF STREETS OR CENTER LINE OF ALLEYS ARE SHOWN BY CIRCLES ON PROFILES. AT ALL POINTS BETWEEN DESIGNATED POINTS THE GRADE SHALL BE ESTABLISHED SO AS TO CONFORM TO A STRAIGHT LINE DRAWN BETWEEN SAID DESIGNATED POINTS. ELEVATIONS ARE IN FEET ABOVE U.S.C. & G.S. SEA LEVEL DATUM OF 1929.  
 THIS DRAWING AND THE DATA HEREON ARE HEREBY MADE A PART OF THE SPECIFICATIONS.  
 WORK SHALL BE CONSTRUCTED ACCORDING TO STANDARD SPECIFICATIONS DATED 10/22/65, ON FILE IN THE OFFICE OF THE COUNTY ENGINEER AND SHALL BE PROSECUTED ONLY IN THE PRESENCE OF THE COUNTY ENGINEER.  
 BEFORE WORK CAN BE STARTED, THE CONTRACTOR MUST OBTAIN A PERMIT TO EXCAVATE IN COUNTY STREETS FROM THE L.A. COUNTY ROAD DEPT., DISTRICT OFFICE NO. 11, 1100 S. GARDEN STREET, LOS ANGELES, CALIFORNIA, AND PAY A FEE TO THE COUNTY ENGINEER, ROOM 300, COUNTY ENGINEERING BUILDING, 100 WEST SECOND STREET OR 1100 S. GARDEN STREET, LOS ANGELES, CALIFORNIA, SUFFICIENT TO COVER THE COST OF CONSTRUCTION INSPECTION AND RECORD PLANS.  
 APPROVAL OF THIS PLAN BY THE COUNTY OF LOS ANGELES DOES NOT CONSTITUTE A REPRESENTATION AS TO THE ACCURACY OF THE LOCATION OF OR THE EXISTENCE OR NON-EXISTENCE OF ANY UNDERGROUND UTILITY PIPE, OR STRUCTURE WITHIN THE LIMITS OF THIS PROJECT. THIS NOTE APPLIES TO ALL PAGES.  
 IF WORK IS TO BE DONE IN A STATE HIGHWAY, A PERMIT MUST BE OBTAINED FROM THE STATE OF CALIFORNIA, DIVISION OF HIGHWAYS, 150 SOUTH SPRING STREET, LOS ANGELES, CALIFORNIA.

COUNTY OF LOS ANGELES, CALIFORNIA  
 JOHN A. LAMBIE, COUNTY ENGINEER J. D. PARKHURST, CHIEF ENGINEER  
 CO. 100, 1011 1/2 St.  
 APPROVED BY: *Richard S. Ke...* ASSISTANT SANITATION ENGINEER APPROVED BY: *J. D. Parkhurst* CHIEF ENGINEER  
 SUBMITTED BY: *Jack...* REGIONAL ENGINEER  
 CHECKED BY: *Bernard A. Volney* REG. C.E. NO. 10633

J.N. 0366.46

P.C. 7477 PAGE 2



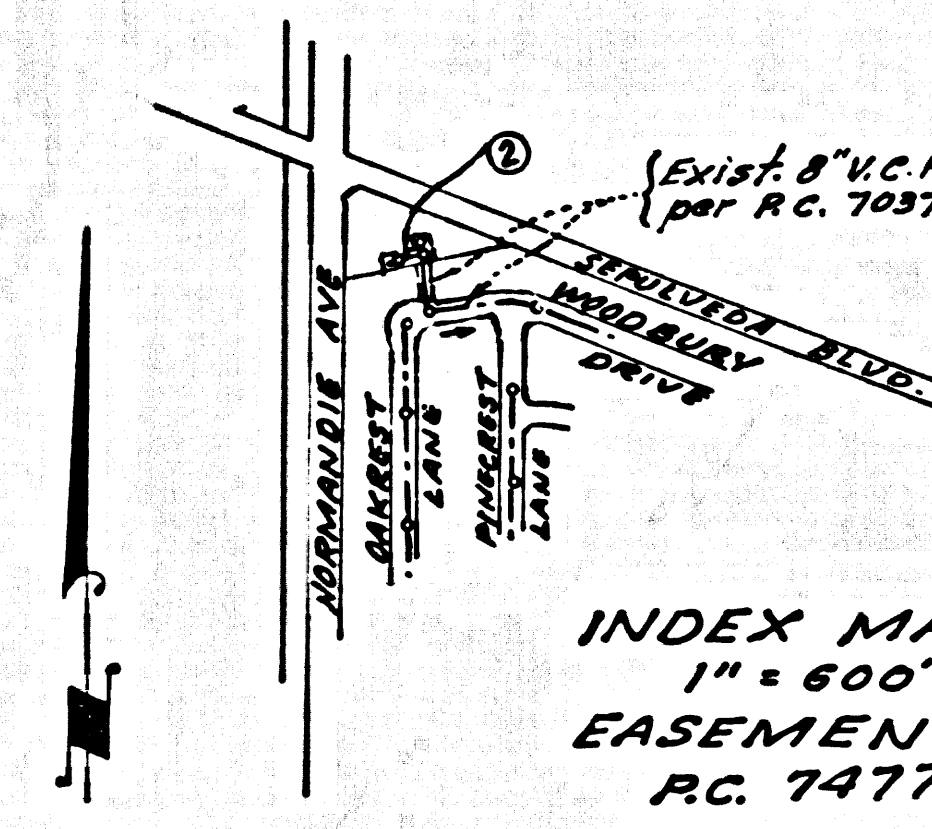
NO CHARGE FOR CONNECTIONS

37685



B.M. SY-3071-A ELEV. 33-103  
 Fd. Square Hand Spike Near  
 center of curb return N.E.  
 corner Lomita Blvd. & Vermont Av.  
 1" North of L. 97.  
 BASE LINE QUAD. 19 53

18. The existence and location of any underground utility, pipes, conduits or structure shown on these plans are obtained by a search of the available records. To the best of our knowledge there are no existing utility except as shown on these plans. The contractor is required to take due precautionary measures to protect the utility lines shown and any other lines not on record or not shown on these drawings. The contractor further assumes all liability and responsibility for the utility pipes, conduits, lines or structure shown or not on these drawings.



INDEX MAP  
 1" = 600'  
 EASEMENT  
 P.C. 7477

REVISION: 11-4-65  
 Changed sewer grade to conform  
 to existing surface over sewer  
 0100. to 1402.96.  
 Approved: *Bernard A. Voloshin*  
 Reg. C.E. No. 10653

LOMITA BLDG. DIST. NO. 12

- NOTES:
- PROVIDE STAKES ON THE PROPERTY LINE OR PROPERTY LINES PRODUCED AT RIGHT ANGLES TO THE SEWER LINE AT THE CENTER LINE OF EACH MANHOLE.
  - NO REPRESENTATIVE OF THE COUNTY ENGINEER WILL SURVEY OR LAY OUT ANY PORTION OF THE WORK.
  - THE PRIVATE ENGINEER SHALL FURNISH THE COUNTY ENGINEER WITH GRADE SHEETS AND STATIONING FOR ALL HOUSE LATERALS AND "Y" BRANCHES AND SHALL PROVIDE STAKES FOR THEM AT THEIR PROPER LOCATIONS WITH STATIONING PLAINLY MARKED. ALL HOUSE LATERALS SHALL BE CONSTRUCTED IN A STRAIGHT ALIGNMENT AT RIGHT ANGLES FROM THE MAIN LINE SEWER EXCEPT AS SHOWN ON THE PLANS. HOUSE LATERALS FROM CHIMNEYS SHALL NOT HAVE AN ANGLE OF LESS THAN 45° WITH THE MAIN LINE SEWER. ANY CHANGE IN ALIGNMENT SHALL BE REQUESTED IN WRITING BY THE PRIVATE ENGINEER.
  - THE PRIVATE ENGINEER SHALL FURNISH THE HOUSE LATERAL DEPTH AT THE PROPERTY LINE BELOW THE TOP OF CURB ELEVATION FOR EACH HOUSE LATERAL ON THE GRADE SHEET.
  - NO REVISIONS SHALL BE MADE IN THESE PLANS WITHOUT THE APPROVAL OF THE COUNTY ENGINEER.
  - THE CONTRACTOR SHALL NOTIFY THE CONSTRUCTION DIVISION BY TELEPHONE, MADISON 9-4742, EXT. 81551, AT LEAST TWENTY-FOUR HOURS BEFORE STARTING ANY WORK UNDER THIS CONTRACT.
  - MANHOLES SHALL BE BRICK SEWER STRUCTURES PER S. 2.1. M.C.G.S. CONCRETE MANHOLES PER S. 6.5 OR S. 4 MAY BE USED 18" OR 24" ASSESSMENT LOCATIONS APPROVED BY THE COUNTY ENGINEER.
  - USE STANDARD MANHOLE FRAMES AND COVERS, S-15, EXCEPT AS NOTED.
  - MANHOLE TOPS IN UNIMPROVED RIGHTS-OF-WAY TO BE SIX INCHES ABOVE FINISHED GRADE.
  - USE EXTRA STRENGTH PIPE. ALL PIPE IS STANDARD DEPTH EXCEPT AS NOTED.
  - USE MECHANICAL COMPRESSION JOINTS FOR ALL V.C.P. JOINTS PER SPECS. SECS. 36, 46 & 49.
  - IF A POWER POLE IS WITHIN THREE FEET OF THE SEWER, THE SEWER SHALL BE ENCASED, PER S-23, TWO FEET ON EACH SIDE FROM THE POINT OF INTERFERENCE.
  - IF DURING THE COURSE OF CONSTRUCTION IT IS DETERMINED THAT THERE IS LESS THAN FOUR FEET OF COVER OVER THE TOP OF A MAIN LINE OR HOUSE LATERAL V.C.P. SEWER WHICH IS NOT INDICATED ON THE PLANS, THE PIPE SHALL BE ENCASED PER S-23, UNLESS OTHERWISE APPROVED BY THE COUNTY ENGINEER.
  - HOUSE LATERALS TO BE CONSTRUCTED WITH INVERTS AT PROPERTY LINE A FEET BELOW CURB GRADE EXCEPT AS NOTED.
  - RESURFACE ALL TRENCHES WITHIN PAVED AREAS TO MEET L.A. COUNTY ROAD DEPT. OR CALIFORNIA STATE HIGHWAY DEPARTMENT SPECIFICATIONS IN ACCORDANCE WITH PERMITS.
  - FOR ALLOWABLE LEAKAGE TEST USE FORMULA NO. 2, SPEC. S, SEC. 54.
  - ALL STATE AND LOCAL TRENCH SAFETY ORDERS WILL BE STRICTLY ENFORCED.

NO CONNECTIONS FOR THE DISPOSAL OF INDUSTRIAL WASTES SHALL BE MADE TO SEWERS SHOWN ON THESE DRAWINGS WITHOUT WRITTEN PERMISSION FROM THE CHIEF ENGINEER AND GENERAL MANAGER OF THE COUNTY SANITATION DISTRICTS.

APPROVED: *Joe P. D. Wright 10/14/65*  
 Industrial Waste Division

COLLECT CHARGES  
 AS INDICATED  
*L. Curtis 10/26/65*

PROFILE, ALIGNMENT AND GRADE OF  
**SANITARY SEWERS** PAGE 1  
 TO BE CONSTRUCTED IN  
**EASEMENT** 37684  
 40 NORMANDIE AVE.

PRIVATE CONTRACT NO. 7477  
 W.S. 28  
 1 SHEET, 2 PAGES  
 SCALE: VERT. 1" = 4'  
 HORIZ. 1" = 40' September, 1965  
 PREPARED IN THE OFFICES OF  
**E. L. PEARSON & ASSOCIATES**  
 By *Thomas C. Clark*  
 REG. C. E. NO. 9757

FOR LEGEND SEE PLAN NO. S-1

NOTE:  
 GRADES TO WHICH THIS IMPROVEMENT IS TO BE CONSTRUCTED ARE SHOWN ON PLANS AND PROFILES. GRADE POINTS FOR TOP OF CURBS, CENTER LINE OF STREETS, OR CENTER LINE OF ALLEYS ARE SHOWN BY CIRCLES ON PROFILES. AT ALL POINTS BETWEEN DESIGNATED POINTS THE GRADE SHALL BE ESTABLISHED SO AS TO CONFORM TO A STRAIGHT LINE DRAWN BETWEEN SAID DESIGNATED POINTS. ELEVATIONS ARE IN FEET ABOVE U.S.C. & G.S. MEAN LEVEL DATUM OF 1929.

THIS DRAWING AND THE DATA HEREON ARE HEREBY MADE A PART OF THE SPECIFICATIONS. ANY CHANGES MADE IN THE OFFICE OF THE COUNTY ENGINEER AND SHALL BE PROSECUTED ONLY IN THE PRESENCE OF THE COUNTY ENGINEER.

WHOSE WORK CAN BE STARTED, THE CONTRACTOR MUST OBTAIN A PERMIT TO OCCUPY IN COUNTY STREETS FROM THE L.A. COUNTY ROAD DEPT., DISTRICT OFFICE NO. 10, AND PAY A FEE TO THE COUNTY ENGINEER, ROOM 300, COUNTY ENGINEERING BUILDING, THE WEST SECOND STREET OF ~~LOS ANGELES~~ ~~CITY~~ ~~INDUSTRIAL~~ ~~WASTES~~ ~~DIVISION~~ ~~OFFICE~~ ~~ENGINEER~~ TO COVER THE COST OF CONSTRUCTION INSPECTION AND RECORD PLANS.

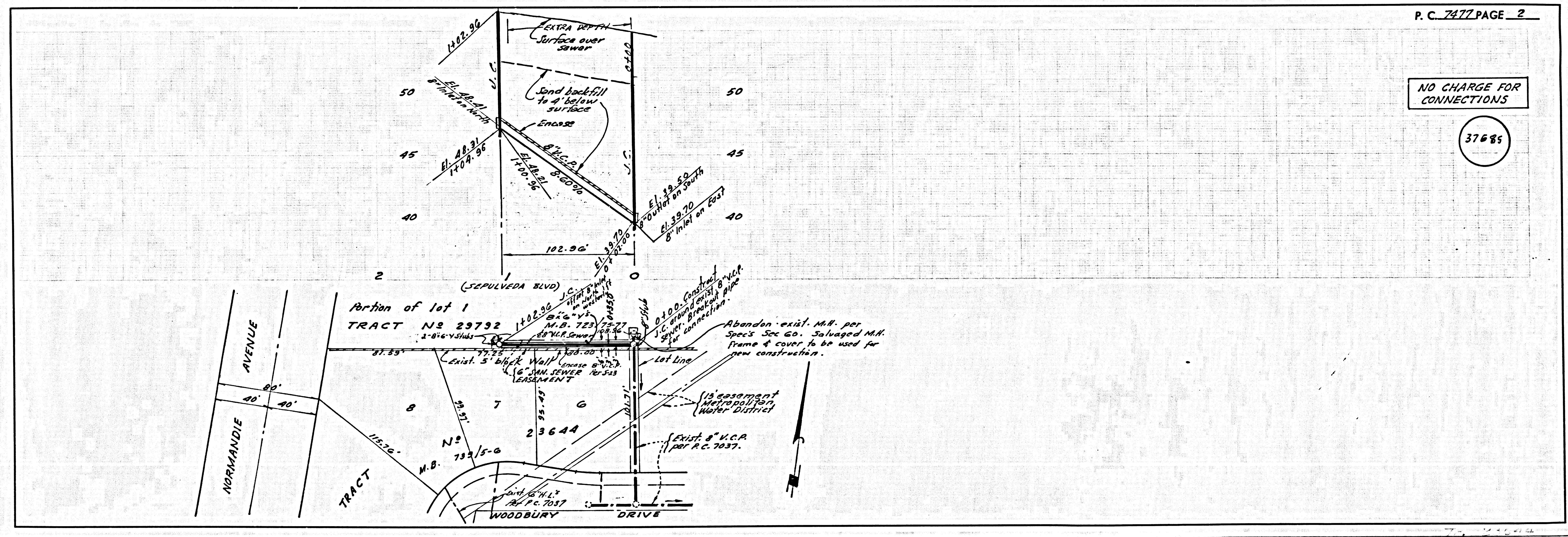
APPROVAL OF THIS PLAN BY THE COUNTY OF LOS ANGELES DOES NOT CONSTITUTE A REPRESENTATION AS TO THE ACCURACY OF THE LOCATION OF OR THE EXISTENCE OR NON-EXISTENCE OF ANY UNDERGROUND UTILITY PIPE, OR STRUCTURE WITHIN THE LIMITS OF THIS PROJECT. THIS NOTE APPLIES TO ALL PAGES.

IF WORK IS TO BE DONE IN A STATE HIGHWAY, A PERMIT MUST BE OBTAINED FROM THE STATE OF CALIFORNIA, DIVISION OF HIGHWAYS, 120 SOUTH SPRING STREET, LOS ANGELES, CALIFORNIA.

COUNTY OF LOS ANGELES, CALIFORNIA  
 JOHN A. LAMBIE, COUNTY ENGINEER J. D. PARKHURST, CHIEF ENGINEER  
 CO. 544, 001, 10, 24

APPROVED BY *W. S. Key* ASSISTANT SANITATION ENGINEER  
 SUBMITTED BY *Jack C. Pearson* REGIONAL ENGINEER  
 CHECKED BY *Bernard A. Voloshin* REG. C.E. NO. 10653

J.N. 036646



NO CHARGE FOR CONNECTIONS

37685

P. C. 7477 PAGE 2