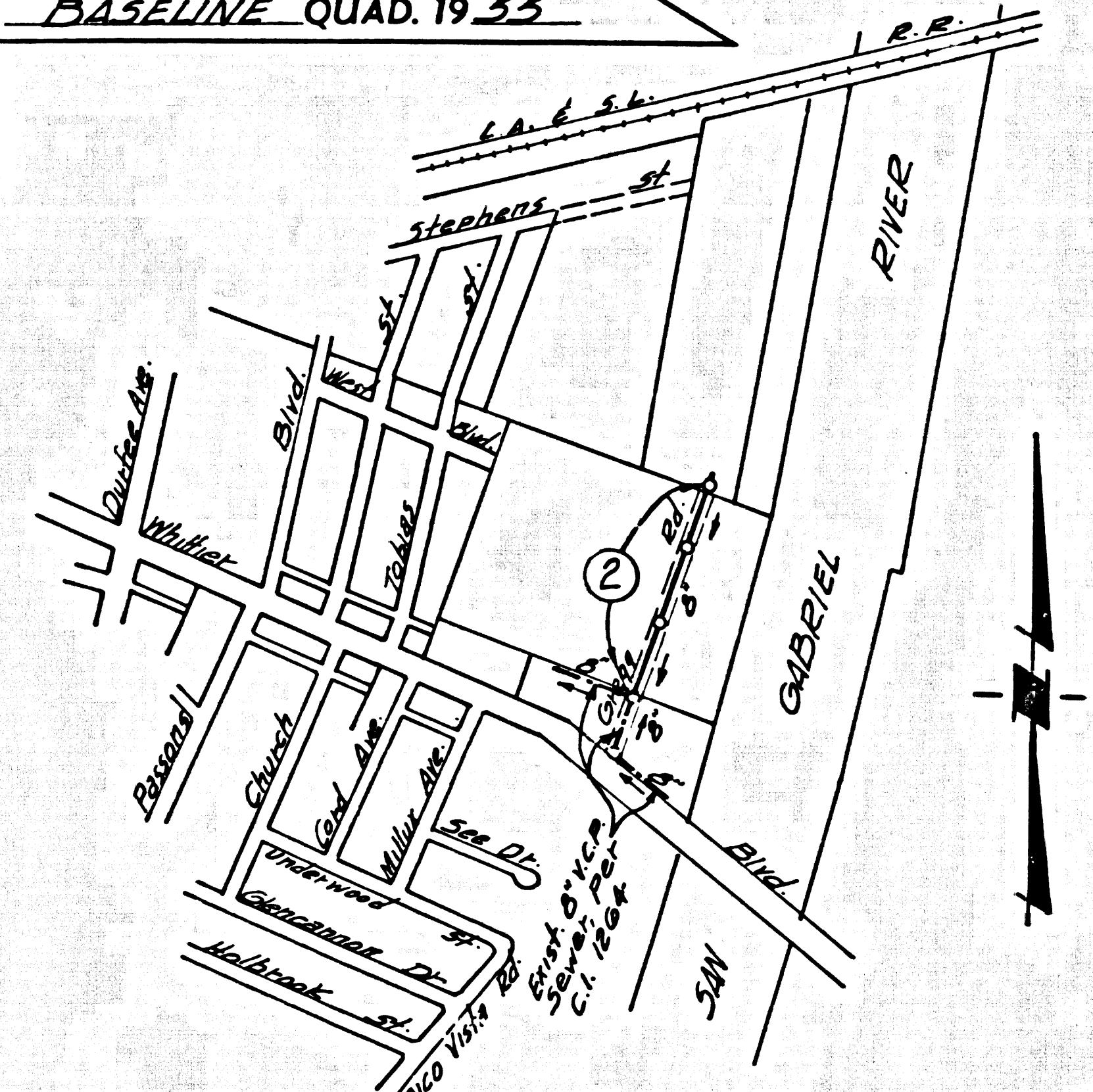
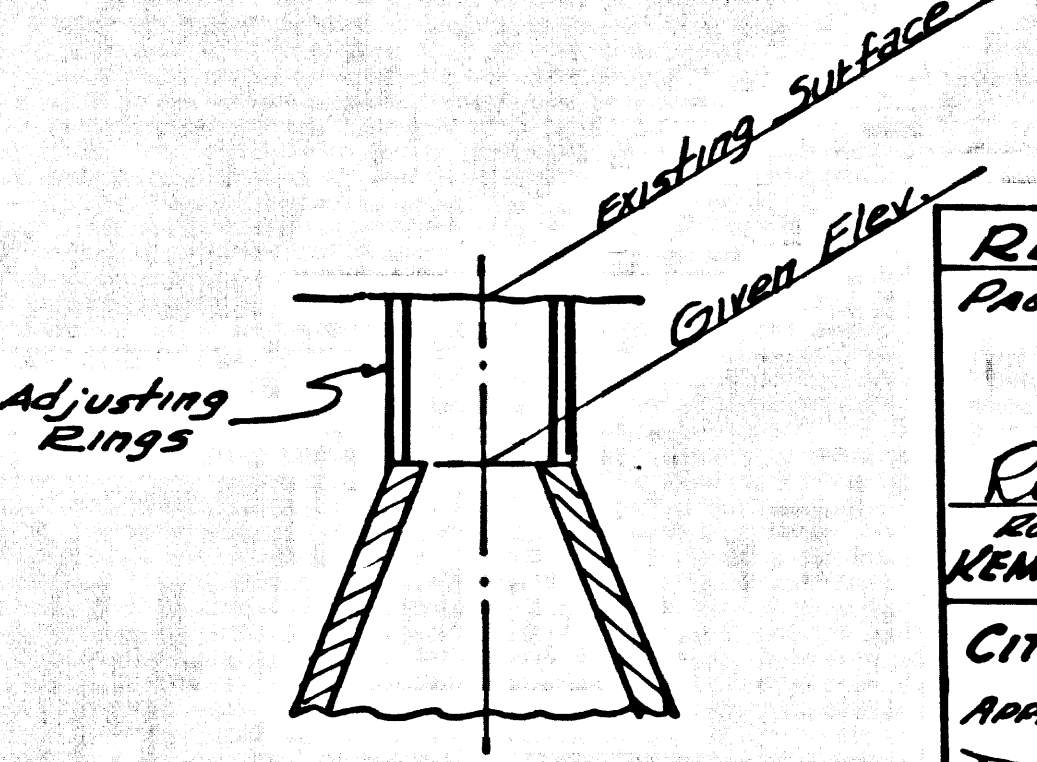


B.M. 57 2862 ELE' 170.660
 L. B.N. N. CB. Whittier Blvd. NE. E. Side
 (Pico Palace Sales) (City of Pico Rivera)
 N. 56 Whittier Blvd. CB. to Street
 Street Light N. 63 Foundation
BASELINE QUAD. 19 55



INDEX MAP
 (GREGG ROAD)
 P.C. 7479
 SCALE: 1"=600'

PRIVATE ENGINEERS NOTICE TO CONTRACTORS
 The existence and approximate location of underground utilities or structures shown on this plan was determined by a search of the available public records. To the best of our knowledge there are no existing underground utilities or structures except as shown on this map.
 The Contractor is required to take due precautionary measures to protect the utilities or structures shown and any other utilities or structures at the site. It shall be the Contractors responsibility to notify the owners of the utilities or structures concerned before starting work.



REVISION NO. 1
 Date: 11-29-1965
 By: Robert R. J. Jones
 Checked: Robert R. J. Jones
 City of Pico Rivera
 Approved: [Signature]
 Date: [Blank]

ISSUE NO CONNECTION PERMITS WITHOUT APPROVAL OF THE DIRECTOR OF PUBLIC WORKS.

PICO RIVERA BLDG. DIST. NO. 11.01

- NOTES:
1. PROVIDE STAKES ON THE PROPERTY LINE OR PROPERTY LINES PRODUCED AT RIGHT ANGLES TO THE SEWER LINE AT THE CENTER LINE OF EACH MANHOLE.
 2. NO REPRESENTATIVE OF THE CITY ENGINEER WILL SERVE OR LAY OUT ANY PORTION OF THE WORK.
 3. THE PRIVATE ENGINEER SHALL FURNISH THE CITY ENGINEER WITH GRADE SHEETS AND STATIONING FOR ALL HOUSE LATERALS AND "T" BRANCHES AND SHALL PROVIDE STAKES FOR THEM AT THEIR PROPER LOCATIONS WITH STATIONING PLAINLY MARKED. ALL HOUSE LATERALS SHALL BE CONSTRUCTED IN A STRAIGHT ALIGNMENT AT RIGHT ANGLES FROM THE MAIN LINE SEWER EXCEPT AS SHOWN ON THE PLANS. HOUSE LATERALS FROM CHIMNEYS SHALL NOT HAVE AN ANGLE OF LESS THAN 45° WITH THE MAIN LINE SEWER. ANY CHANGE IN ALIGNMENT SHALL BE REQUESTED IN WRITING BY THE PRIVATE ENGINEER.
 4. THE PRIVATE ENGINEER SHALL FURNISH THE HOUSE LATERAL DEPTH AT THE PROPERTY LINE BELOW THE TOP OF CURB ELEVATION FOR EACH HOUSE LATERAL ON THE GRADE SHEET.
 5. NO REVISIONS SHALL BE MADE IN THESE PLANS WITHOUT THE APPROVAL OF THE CITY ENGINEER.
 6. THE CONTRACTOR SHALL NOTIFY THE CONSTRUCTION DIVISION BY TELEPHONE, AM 5-6787, EXT. 551, AT LEAST TWENTY-FOUR HOURS BEFORE STARTING ANY WORK UNDER THIS CONTRACT.
 7. MANHOLES SHALL BE BRICK SEWER STRUCTURES PER S-2, PRECAST CONCRETE MANHOLES PER S-3 OR S-4 MAY BE USED AS AN ALTERNATE IN LOCATIONS APPROVED BY THE CITY ENGINEER.
 8. USE STANDARD MANHOLE FRAMES AND COVERS, S-1A.
 9. ~~MANHOLES SHALL BE CONSTRUCTED TO THE SAME DEPTH AS THE EXISTING SEWER.~~
 10. USE EXTRA STRENGTH PIPE. ALL PIPE IS STANDARD DEPTH.
 11. USE MECHANICAL COMPRESSION JOINTS FOR ALL V.C.P. JOINTS PER SPEC'S, SECS. 3A, 4B & 6.
 12. IF A POWER POLE IS WITHIN THREE FEET OF THE SEWER, THE SEWER SHALL BE ENCASED, PER S-23, TWO FEET ON EACH SIDE FROM THE POINT OF INTERFERENCE.
 13. IF DURING THE COURSE OF CONSTRUCTION IT IS DETERMINED THAT THERE IS LESS THAN FOUR FEET OF COVER OVER THE TOP OF A MAIN LINE OR HOUSE LATERAL V.C.P. SEWER WHICH IS NOT INDICATED ON THE PLANS, THE PIPE SHALL BE ENCASED PER S-23, UNLESS OTHERWISE APPROVED BY THE CITY ENGINEER.
 14. HOUSE LATERALS TO BE CONSTRUCTED WITH 1/8" RISE PER FT. TO FUTURE R/W LINE.
 15. RESURFACE ALL TRENCHES WITHIN PAVED AREAS TO MEET L.A. COUNTY ROAD DEPT. OR CALIFORNIA STATE HIGHWAY REQUIREMENTS IN ACCORDANCE WITH PERMITS.
 16. FOR ALLOWABLE LEAKAGE TEST USE FORMULA NO. 2, SPEC'S, SEC. 5A.
 17. ALL STATE AND LOCAL TRENCH SAFETY ORDERS WILL BE STRICTLY ENFORCED.
 18. **All C.P. Shall Be Class 150 or Higher with T-type Joints or approved.**
 19. Normal M.H. Top to be at given elevation extend M.H. to surface with adjusting rings. (See Detail to left.)
 20. Use Caution When Trenching 30' or not to damage Exist Trees, The trees are to remain.

COLLECT CHARGES AS INDICATED
 [Signature]

NO CONNECTIONS FOR THE DISPOSAL OF INDUSTRIAL WASTES SHALL BE MADE TO SEWERS SHOWN ON THESE DRAWINGS WITHOUT WRITTEN PERMISSION FROM THE CHIEF ENGINEER AND GENERAL MANAGER OF THE COUNTY SANITATION DISTRICTS.
 APPROVED: [Signature]
 Industrial Waste Division

PROFILE, ALIGNMENT AND GRADE OF
SANITARY SEWERS PAGE 1

CONSTRUCTED IN
GREGG ROAD
 (PRIVATE STREET)

PRIVATE CONTRACT NO. 7479

W.S. 36-37
 SHEET 2 PAGES
 SCALE: HORIZ. 1"=40' VERT. 1"=4'
 DATE: OCTOBER, 1965

PREPARED IN THE OFFICES OF
KEMMERER ENGR. CO. INC.
 145 N. PAINTER AVE. WHITTIER
 BY: Robert R. J. Jones
 REG. C. E. NO. 11345

FOR LEGEND SEE PLAN NO. S-1

NOTE:
 GRADES TO WHICH THIS IMPROVEMENT IS TO BE CONSTRUCTED ARE SHOWN ON PLANS AND PROFILE. GRADE POINTS FOR TOP OF CURBS, CENTER LINE OF STREETS, OR CENTER LINE OF ALLEYS ARE SHOWN BY CIRCLES ON PROFILE. AT ALL POINTS BETWEEN DESIGNATED POINTS THE GRADE SHALL BE ESTABLISHED SO AS TO COMPLY TO A STRAIGHT LINE GRADE BETWEEN SAID DESIGNATED POINTS. ELEVATIONS ARE IN FEET ABOVE U.S.C. & G.S. SEA LEVEL DATUM OF 1929.
 THE DRAWINGS AND DATA HEREON ARE MADE A PART OF THE SPECIFICATIONS. WORK SHALL BE CONSTRUCTED ACCORDING TO STANDARD SPECIFICATIONS DATED 12-22-62, ON FILE IN THE OFFICE OF THE CITY ENGINEER AND SHALL BE PROSECUTED ONLY IN THE PRESENCE OF THE CITY ENGINEER.
 BEFORE WORK CAN BE STARTED, THE CONTRACTOR MUST OBTAIN A PERMIT TO EXCAVATE IN CITY STREETS FROM THE CITY OF PICO RIVERA, 601 S. PICO BLVD. AND MAKE A DEPOSIT, SUFFICIENT TO COVER THE COST OF CONSTRUCTION INSPECTION AND RECORD PLANS.
 APPROVAL OF THIS PLAN BY THE CITY OF PICO RIVERA DOES NOT CONSTITUTE A REPRESENTATION AS TO THE ACCURACY OF THE LOCATION OR OF THE EXISTENCE OR NON-EXISTENCE OF ANY UNDERGROUND UTILITIES OR STRUCTURE WITHIN THE LIMITS OF THE PROJECT. THIS NOTE APPLIES TO ALL PAGES.
 IF WORK IS TO BE DONE IN A STATE HIGHWAY, A PERMIT MUST BE OBTAINED FROM THE STATE OF CALIFORNIA, DIVISION OF HIGHWAYS, 126 SOUTH SPRING STREET, LOS ANGELES, CALIFORNIA.

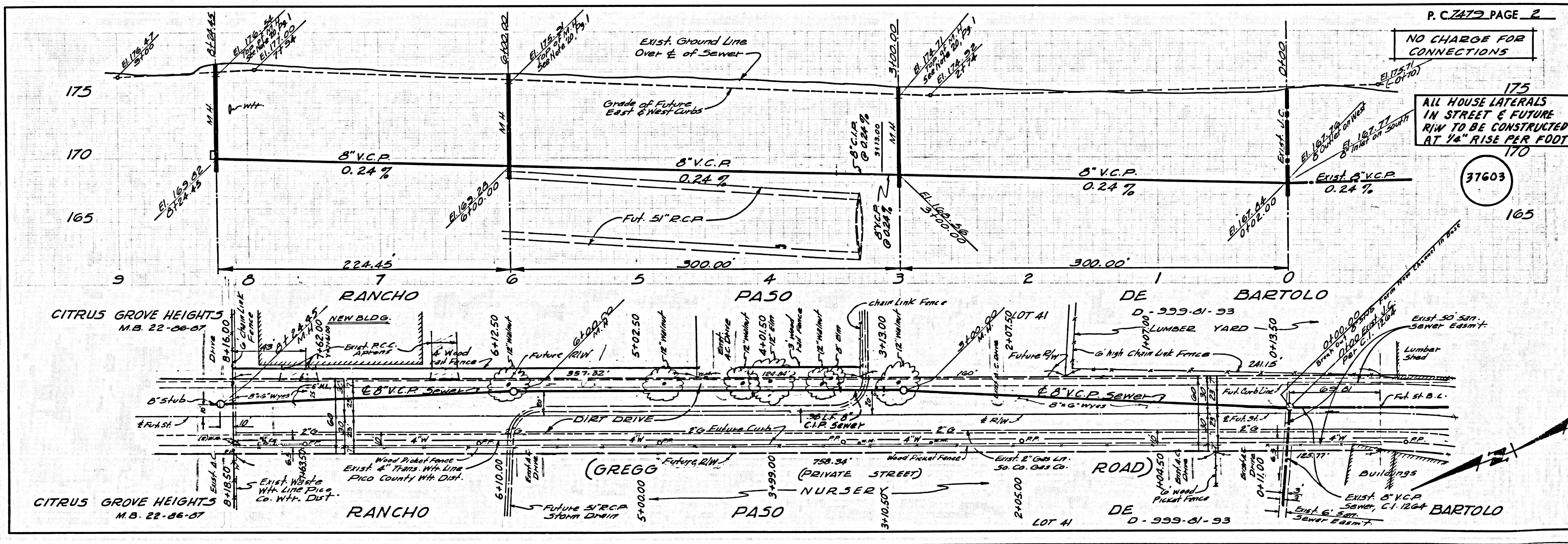
CITY OF PICO RIVERA, CALIFORNIA
 JOHN A. LAMBIE, CITY ENGINEER
 APPROVED BY: [Signature]
 ASSISTANT SANITATION ENGINEER

J. D. PARKHURST, CHIEF ENGINEER
 APPROVED BY: [Signature]
 OFFICE ENGINEER

SUBMITTED BY: [Signature]
 LOS ANGELES REGIONAL ENGINEER

CHECKED BY: [Signature] 10-24-65
 REG. C. E. NO. 2456

APPROVED BY: [Signature] 10-27-65
 CITY OF PICO RIVERA
 DEPT. OF PUBLIC WORKS

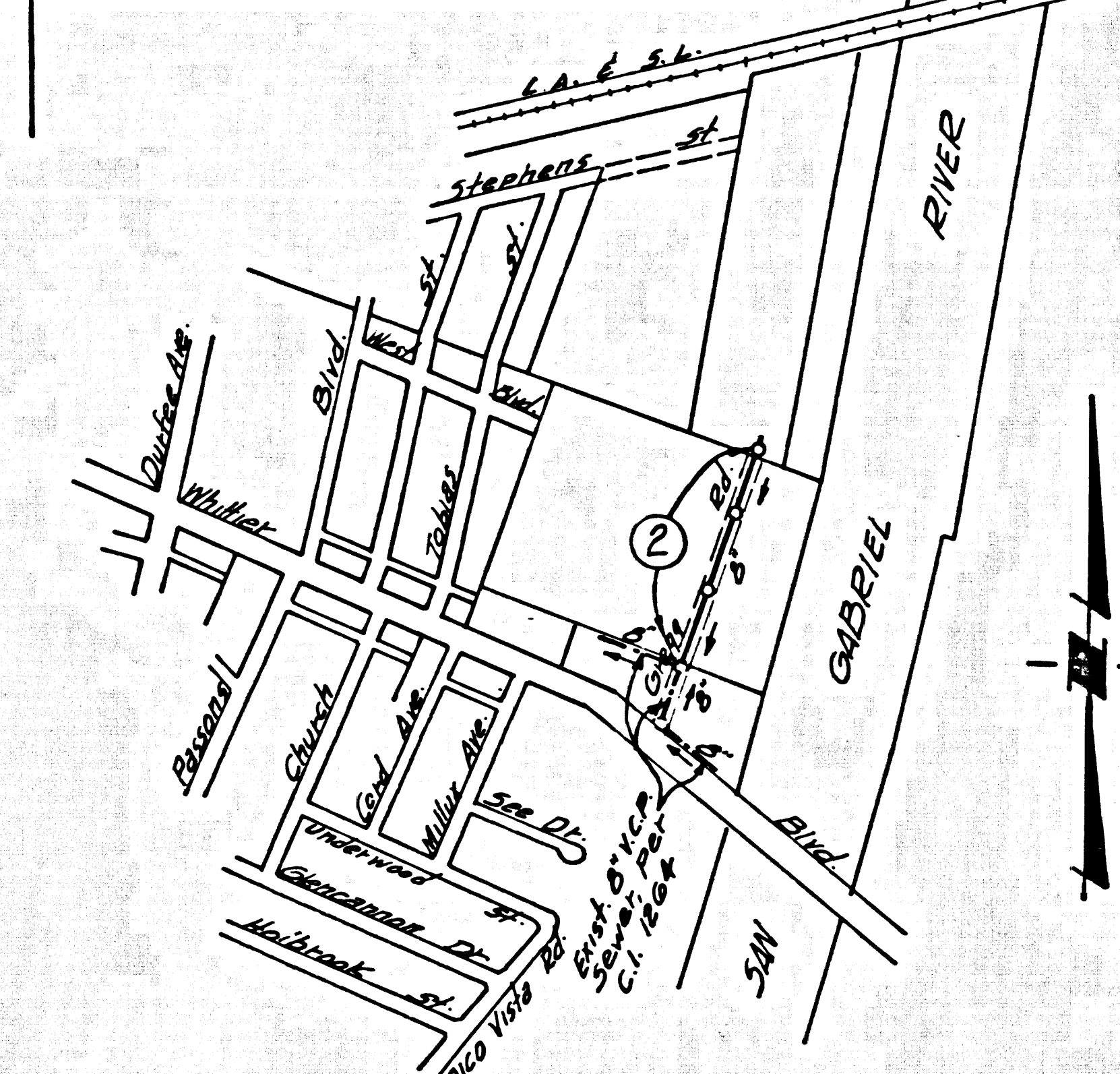


NO CHARGE FOR CONNECTIONS

ALL HOUSE LATERALS IN STREET & FUTURE R/W TO BE CONSTRUCTED AT 1/8" RISE PER FOOT

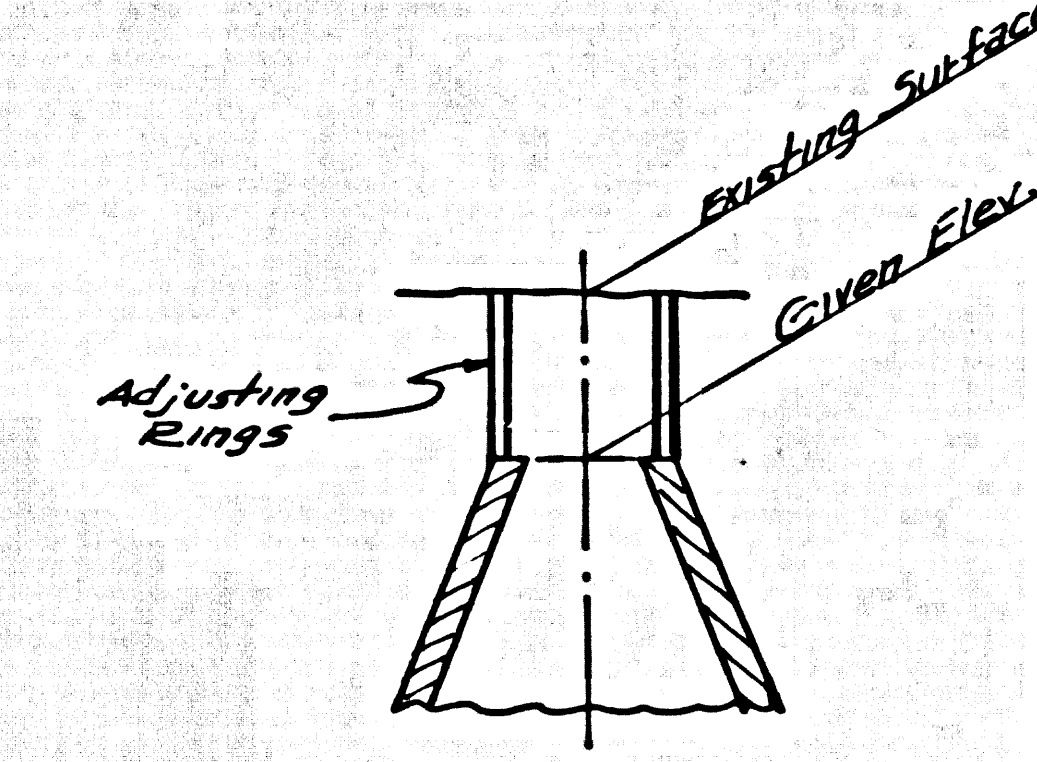
37603

B.M. 57 2862 ELEV. 170.666
 1. B.N. N. Co. Whittier Blvd. No. E. Side
 Pico Palace Sales) Bldg. 17 3561 30 ft.
 N. 56. Whittier Blvd. Co. 18 Around
 Street Light 17 35.5 Foundation
BASELINE QUAD. 19 33



INDEX MAP
 (GREGG ROAD)
 P.C. 7479
 SCALE: 1"=600'

PRIVATE ENGINEERS NOTICE TO CONTRACTORS
 The existence and approximate location of underground utilities or structures shown on this plan was determined by a search of the available Public records. To the best of our knowledge there are no existing underground utilities or structures except as shown on this plan.
 The Contractor is required to take all precautionary measures to protect the utilities or structures shown and any other utilities or structures at the site. It shall be the Contractor's responsibility to notify the owners of the utilities or structures concerned before starting work.



REVISION No. 1
 Page 2 of 3 moved
 3" W.P.
 11-29-1965
 Robert R. Flores
 Robert R. Flores & Co. Inc.
 KENNERER ENGR. CO. INC.
 CITY OF PICO RIVERA
 Approved 12-2-66
 R. R. Flores

ISSUE NO CONNECTION PERMITS WITHOUT APPROVAL OF THE DIRECTOR OF PUBLIC WORKS.

PICO RIVERA BLDG. DIST. NO. 11.01

- NOTES:**
1. PROVIDE STAKES ON THE PROPERTY LINE OR PROPERTY LINES PRODUCE AT RIGHT ANGLES TO THE SEWER LINE AT THE CENTER LINE OF EACH MANHOLE.
 2. NO REPRESENTATIVE OF THE CITY ENGINEER WILL SURVEY OR LAY OUT ANY PORTION OF THE WORK.
 3. THE PRIVATE ENGINEER SHALL FURNISH THE CITY ENGINEER WITH GRADE SHEETS AND STATIONING FOR ALL HOUSE LATERALS AND 12" BRANCHES AND SHALL PROVIDE STAKES FOR THEM AT THEIR PROPER LOCATIONS WITH STATIONING PLAINLY MARKED.
 4. ALL HOUSE LATERALS SHALL BE CONSTRUCTED AT A STRAIGHT ALIGNMENT AT RIGHT ANGLES FROM THE MAIN LINE SEWER EXCEPT AS SHOWN ON THE PLAN. HOUSE LATERALS FROM CHIMNEYS SHALL NOT HAVE AN ANGLE OF LESS THAN 45° WITH THE MAIN LINE SEWER. ANY CHANGE IN ALIGNMENT SHALL BE REQUESTED IN WRITING BY THE PRIVATE ENGINEER.
 5. THE PRIVATE ENGINEER SHALL FURNISH THE HOUSE LATERAL DEPTH AT THE PROPERTY LINE BELOW THE TOP OF CURB ELEVATION FOR EACH HOUSE LATERAL ON THE GRADE SHEET.
 6. NO REVISIONS SHALL BE MADE IN THESE PLANS WITHOUT THE APPROVAL OF THE CITY ENGINEER.
 7. THE CONTRACTOR SHALL NOTIFY THE CONSTRUCTION DIVISION BY TELEPHONE, 24 HOURS, AT LEAST TWENTY-FOUR HOURS BEFORE STARTING ANY WORK UNDER THIS CONTRACT.
 8. USE STANDARD MANHOLE FRAMES AND COVERS, S.I.S.
 9. USE STANDARD MANHOLE FRAMES AND COVERS, S.I.S.
 10. USE EXTRA STRENGTH PIPE. ALL PIPE IS STANDARD DEPTH.
 11. USE MECHANICAL COMPRESSION JOINTS FOR ALL V.C.P. JOINTS PER SPEC'S, SECS. 36, 40 & 41.
 12. IF A POWER POLE IS WITHIN THREE FEET OF THE SEWER, THE SEWER SHALL BE ENCASED, PER S-25, TWO FEET ON EACH SIDE FROM THE POINT OF INTERFERENCE.
 13. IF DURING THE COURSE OF CONSTRUCTION IT IS DETERMINED THAT THERE IS LESS THAN FOUR FEET OF COVER OVER THE TOP OF A MAIN LINE OR HOUSE LATERAL V.C.P. SEWER WHICH IS NOT INDICATED ON THE PLANS, THE PIPE SHALL BE ENCASED PER S-25, UNLESS OTHERWISE APPROVED BY THE CITY ENGINEER.
 14. HOUSE LATERALS TO BE CONSTRUCTED WITH 1/4" RISE PER FT. TO FUTURE R/W LINE.
 15. RESURFACE ALL TRENCHES WITHIN PAVED AREAS TO MEET L.A. COUNTY ROAD DEPT. OR CALIFORNIA STATE HIGHWAY REQUIREMENTS IN ACCORDANCE WITH PERMITS.
 16. FOR ALLOWABLE LEAKAGE TEST USE FORMULA NO. 2, SPEC'S, SEC. 34.
 17. ALL STATE AND LOCAL TRENCH SAFETY ORDERS WILL BE STRICTLY ENFORCED.
 18. ALL C.P. SHALL BE CLASS 150 OR BETTER WITH TYPED JOINTS OR APPROVED.
 19. Nominal M.H. Top to be at given elevation extend M.H. to surface with adjusting rings. (See Detail 8 Left.)
 20. Use caution when trenching so as not to damage Erect Trees, The trees are to remain.

COLLECT CHARGES AS INDICATED
 J. H. W. ...

NO CONNECTIONS FOR THE DISPOSAL OF INDUSTRIAL WASTES SHALL BE MADE TO SEWERS SHOWN ON THESE DRAWINGS WITHOUT WRITTEN PERMISSION FROM THE CHIEF ENGINEER AND GENERAL MANAGER OF THE COUNTY SANITATION DISTRICTS.
 APPROVED: R. A. ...
 Industrial Waste Division

PROFILE, ALIGNMENT AND GRADE OF
SANITARY SEWERS PAGE 1

CONSTRUCTED IN
GREGG ROAD
 (PRIVATE STREET)

PRIVATE CONTRACT NO. 7479

W.S. 56-37
 1 SHEET, 2 PAGES
 SCALE: 1"=40' OCTOBER, 1965

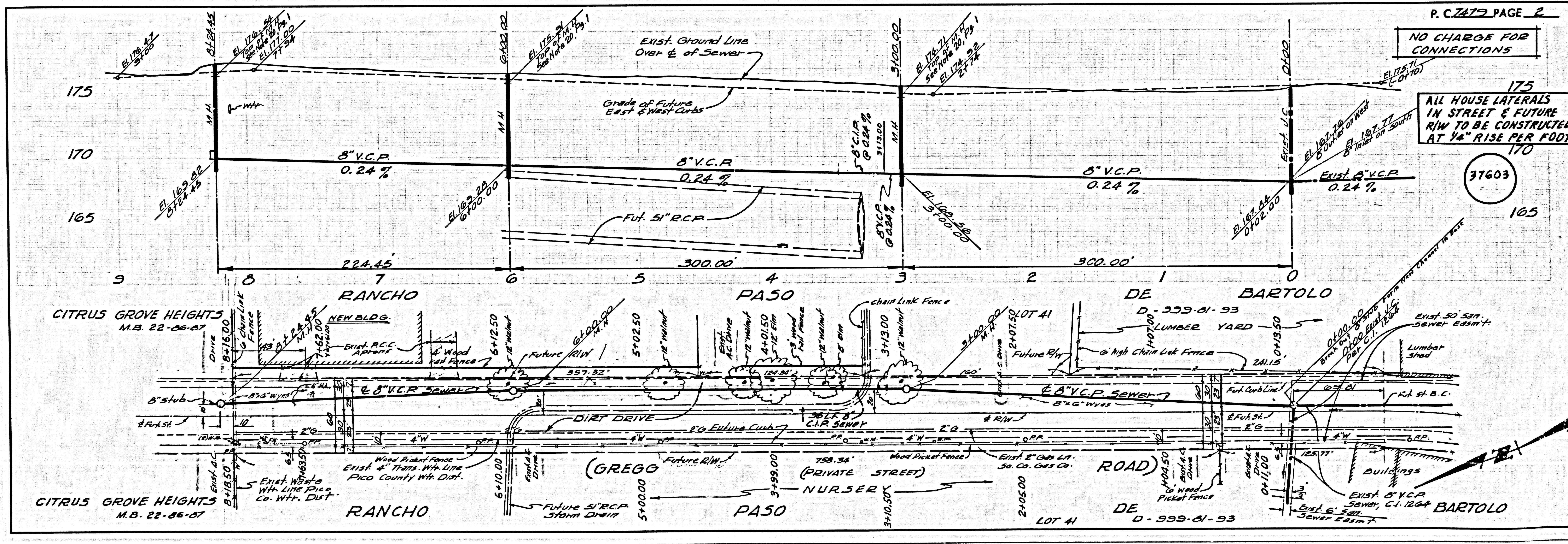
PREPARED IN THE OFFICES OF
KENNERER ENGR. CO. INC.
 143 N. PAINTER AVE. WHITTIER
 Robert R. Flores
 REG. C. E. NO. 11382

FOR LEGEND SEE PLAN NO. S-1
 NOTES:
 GRADES TO WHICH THIS IMPROVEMENT IS TO BE CONSTRUCTED ARE SHOWN ON PLANS AND PROFILES. GRADE POINTS FOR TOP OF CURBS, CENTER LINE OF STREETS, OR CENTER LINE OF ALLEYS ARE SHOWN BY CIRCLES ON PROFILES AT ALL POINTS BETWEEN DESIGNATED POINTS THE GRADE SHALL BE ESTABLISHED SO AS TO CONFORM TO A STRAIGHT LINE BETWEEN SAID DESIGNATED POINTS.
 ELEVATIONS ARE IN FEET ABOVE U.S.C. & G.S. SEA LEVEL DATUM OF 1929.
 THE DRAWING AND THE DATA HEREON ARE HEREBY MADE A PART OF THE SPECIFICATIONS.
 WORK SHALL BE CONSTRUCTED ACCORDING TO STANDARD SPECIFICATIONS DATED JANUARY 22, 1962, ON FILE IN THE OFFICE OF THE CITY ENGINEER AND SHALL BE PROCEEDED ONLY IN THE PRESENCE OF THE CITY ENGINEER.
 BEFORE WORK CAN BE STARTED, THE CONTRACTOR MUST OBTAIN A PERMIT TO EXCAVATE IN CITY STREETS FROM THE CITY OF PICO RIVERA, 10015 PASADENA BLVD., AND MAKE A DEPOSIT, SUFFICIENT TO COVER THE COST OF CONSTRUCTION INSPECTION AND RECORD PLANS.
 APPROVAL OF THIS PLAN BY THE CITY OF PICO RIVERA DOES NOT CONSTITUTE A REPRESENTATION AS TO THE ACCURACY OF THE LOCATION OR OF THE EXISTENCE OR NON-EXISTENCE OF ANY UNDERGROUND UTILITY PIPE, OR STRUCTURE WITHIN THE LIMITS OF THIS PROJECT. THIS NOTE APPLIES TO ALL PAGES.
 IF WORK IS TO BE DONE IN A STATE HIGHWAY, A PERMIT MUST BE OBTAINED FROM THE STATE OF CALIFORNIA, DIVISION OF HIGHWAYS, 120 SOUTH SPRING STREET, LOS ANGELES, CALIFORNIA.

CITY OF PICO RIVERA, CALIFORNIA
 JOHN A. LAMBIE, CITY ENGINEER
 APPROVED BY: [Signature]
 ASSISTANT SANITATION ENGINEER

SUBMITTED BY: [Signature]
 L.S. CROSBY, JUNIOR
 L.S. CROSBY & ASSOCIATES
 CHECKED BY: [Signature] 10-29-65
 REG. C.E. NO. 2456

APPROVED BY: [Signature] 10-27-65
 CITY OF PICO RIVERA
 DEPT. OF PUBLIC WORKS



P.C. 7479 PAGE 2
 NO CHARGE FOR CONNECTIONS

ALL HOUSE LATERALS IN STREET & FUTURE R/W TO BE CONSTRUCTED AT 1/4" RISE PER FOOT

37603