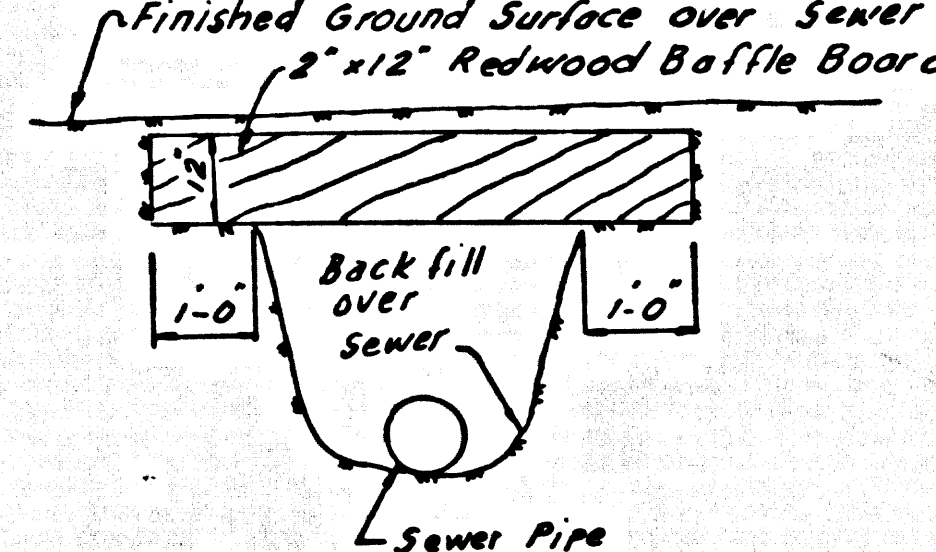


B.M. SY4392-A Reset ELEV. 931.686
 R.D. B.M. Tag in S. Ch. Crest Road ± 2'
 E. C.B. opening ± 40' S. E. Crest Road
 ± 3' 81' E. Ch. Hawthorne Blvd.
 PALOS VERDES QUAD. 19 60

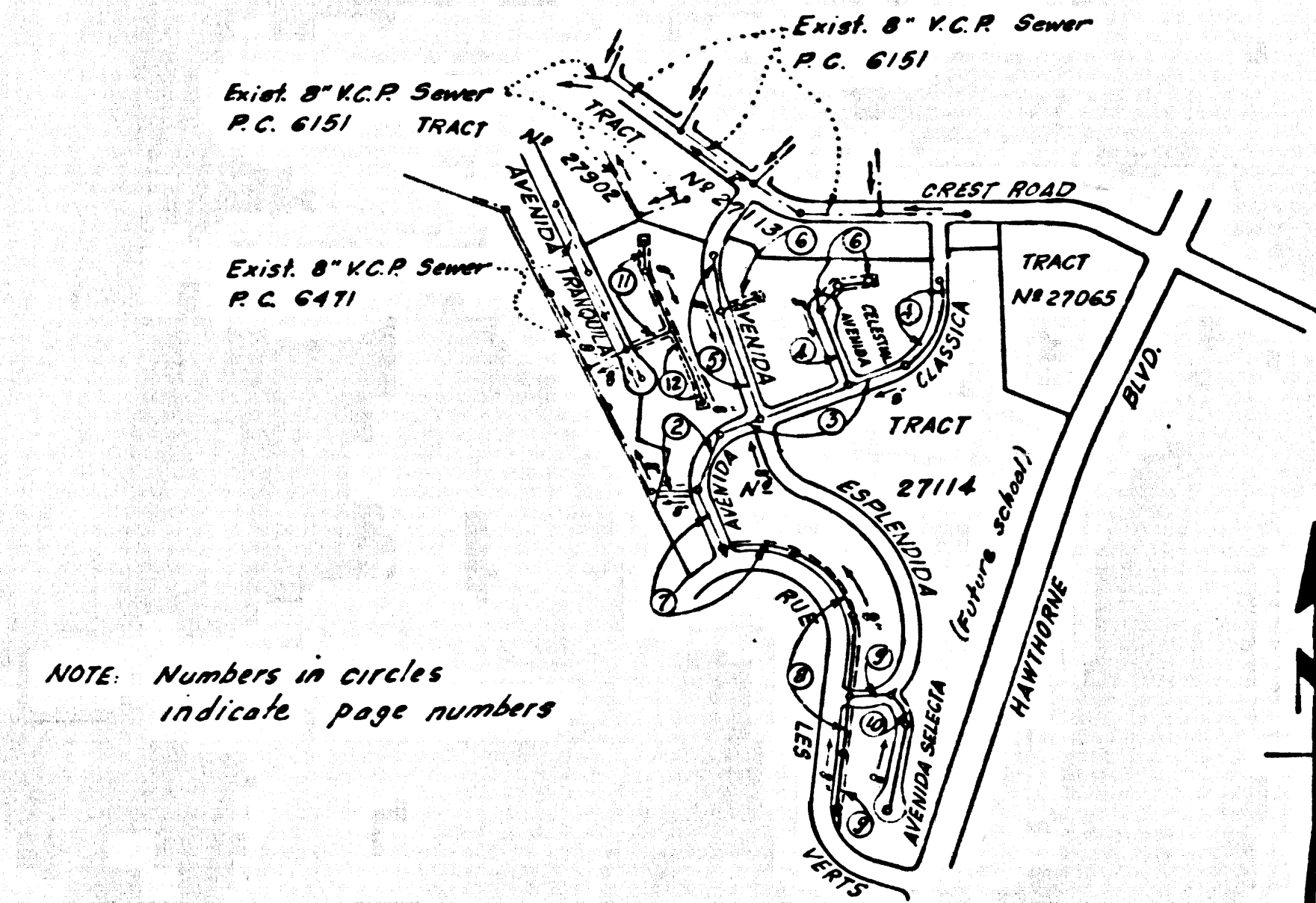
2" x 12" REDWOOD BAFFLE BOARD DETAIL



1. Each end of baffle board will extend one foot into undisturbed ground.
2. Baffles will be so spaced that the top of the lower baffle shall be level with the bottom of the upper.
3. The upper layer of backfill to be 1 foot min. of top soil. Top soil shall be tamped in place and planted with outland weed seed and adequately watered until growth is restored.

REVISION: June 1966
 Additional M.L. for Lot 79
 at sta. 4+25.00 Page 3
 Approved: *Edward J. Valdes*
 Office of County Engineer

REVISION: MARCH 1966
 RAISED GRADES IN CELESTIAL AVENIDA
 PAGE 4, AND EASEMENTS ON PAGE 4 & GB
 By *John A. Lambie*
 Approved: *Edward J. Valdes*
 Office of County Engineer



INDEX MAP
 TRACT No 27114
 P.C. No 7482
 SCALE: 1"=600'

**DOUBLE SCALE
 LOMITA BLDG. DIST. NO. 12**

PROFILE ALIGNMENT AND GRADE OF
SANITARY SEWERS PAGE 1
 TO BE CONSTRUCTED IN

TRACT No 27114

PRIVATE CONTRACT NO. 7482

W.S. 27

6 SHEETS, 12 PAGES

38229

SCALE: VERT. 1"=4' HORIZ. 1"=40'

DATE: MARCH 1965

PREPARED IN THE OFFICES OF
 DEVELOPMENT ENGINEERING
 1001 P. Street, Los Angeles, California

By *John R. Pano*
 REG. C. E. NO. 3882

FOR LEGEND SEE PLAN NO. S-1

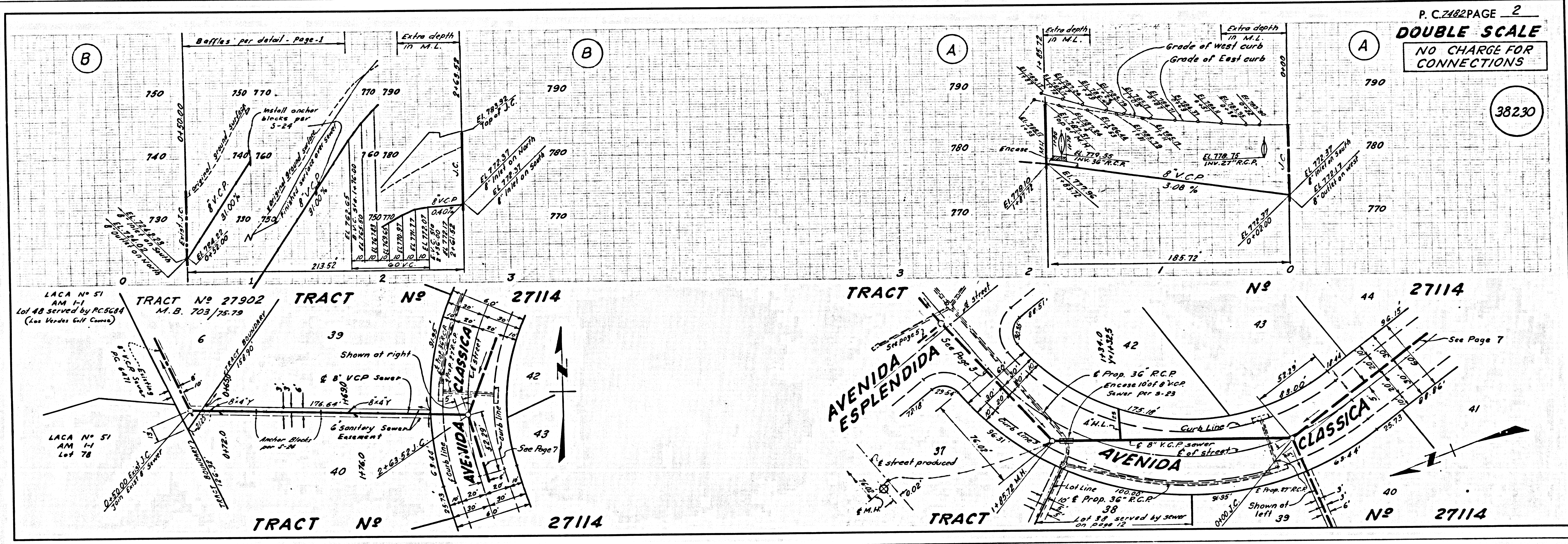
- NOTES:
1. PROVIDE STAKES ON THE PROPERTY LINE OR PROPERTY LINES PRODUCED AT RIGHT ANGLES TO THE SEWER LINE AT THE CENTER LINE OF EACH MANHOLE.
 2. NO REPRESENTATIVE OF THE COUNTY ENGINEER WILL SURVEY OR LAY OUT ANY PORTION OF THE WORK.
 3. THE PRIVATE ENGINEER SHALL FURNISH THE COUNTY ENGINEER WITH GRADE SHEETS AND STATIONING FOR ALL HOUSE LATERALS AND Y BRANCHES AND SHALL PROVIDE STAKES FOR THEM AT THEIR PROPER LOCATIONS WITH STATIONING PLAINLY MARKED. ALL HOUSE LATERALS SHALL BE CONSTRUCTED IN A STRAIGHT ALIGNMENT AT RIGHT ANGLES FROM THE MAIN LINE SEWER EXCEPT AS SHOWN ON THE PLANS. HOUSE LATERALS FROM CHIMNEYS SHALL NOT HAVE AN ANGLE OF LESS THAN 45° WITH THE MAIN LINE SEWER. ANY CHANGE IN ALIGNMENT SHALL BE REQUESTED IN WRITING BY THE PRIVATE ENGINEER.
 4. THE PRIVATE ENGINEER SHALL FURNISH THE HOUSE LATERAL DEPTH AT THE PROPERTY LINE BELOW THE TOP OF CURB ELEVATION FOR EACH HOUSE LATERAL ON THE GRADE SHEET.
 5. NO REVISIONS SHALL BE MADE IN THESE PLANS WITHOUT THE APPROVAL OF THE COUNTY ENGINEER.
 6. THE CONTRACTOR SHALL NOTIFY THE CONSTRUCTION DIVISION BY TELEPHONE, MADISON 9-4747, EXT. 8151, AT LEAST TWENTY-FOUR HOURS BEFORE STARTING ANY WORK UNDER THIS CONTRACT.
 7. MANHOLES SHALL BE BRICK SEWER STRUCTURES PER S-3 PRECAST CONCRETE MANHOLES PER S-5 OR S-6 MAY BE USED AS AN ALTERNATE IN LOCATIONS APPROVED BY THE COUNTY ENGINEER.
 8. USE STANDARD MANHOLE FRAMES AND COVERS, S-16, EXCEPT AS NOTED.
 9. MANHOLE TOPS IN UNIMPROVED RIGHTS-OF-WAY TO BE SIX INCHES ABOVE FINISHED GRADE.
 10. USE EXTRA STRENGTH PIPE. ALL PIPE IS STANDARD DEPTH EXCEPT AS NOTED.
 11. USE GUMBIT JOINTS OR MECHANICAL COMPRESSION JOINTS FOR ALL V.C.P. JOINTS PER SPECS. SECS. 34 & 44 & 49.
 12. WHERE EVER GROUND WATER IS ENCOUNTERED DURING THE CONSTRUCTION OF THE SEWERS, THE V.C.P. JOINTS SHALL BE OF JOINT COMPOUND PER SPECS. SECS. 33 & 48, OR MECHANICAL COMPRESSION JOINTS PER SPECS. SEC. 34.
 13. IF A POWER POLE IS WITHIN THREE FEET OF THE SEWERS, THE SEWERS SHALL BE ENCASED PER S-23 TWO FEET ON EACH SIDE FROM THE POINT OF INTERFERENCE.
 14. IF DURING THE COURSE OF CONSTRUCTION IT IS DETERMINED THAT THERE IS LESS THAN FOUR FEET OF COVER OVER THE TOP OF A MAIN LINE OR HOUSE LATERAL V.C.P. SEWER WHICH IS NOT INDICATED ON THE PLANS, THE PIPE SHALL BE ENCASED PER S-23 UNLESS OTHERWISE APPROVED BY THE COUNTY ENGINEER.
 15. HOUSE LATERALS TO BE CONSTRUCTED WITH INVERTS AT PROPERTY LINE... E... FEET BELOW CURB GRADE EXCEPT AS NOTED.
 16. REINFORCE ALL TRENCHES WITHIN PAVED AREAS TO MEET L.A. COUNTY ROAD DEPT. OR CALIFORNIA STATE HIGHWAY REQUIREMENTS IN ACCORDANCE WITH PERMITS.
 17. FOR ALLOWABLE LEAKAGE TEST USE FORMULA NO. 1, SPECS. SEC. 34.
 18. ALL STATE AND LOCAL TRENCH SAFETY ORDERS WILL BE RIGIDLY ENFORCED.
 19. CONSTRUCTION IN FILLED AREAS
 (A) IN ACCEPTABLE CERTIFICATION OF COMPACTION TEST RESULTS SHALL BE SUBMITTED TO THE CONSTRUCTION DIVISION. COMPACTION TESTS ARE TO BE MADE IN ACCORDANCE WITH ASTM STANDARD METHOD OR TEST D-1557-61T.
 (B) NO CONSTRUCTION IS PERMITTED IN FILLED AREAS WHERE THE RELATIVE DENSITY OF COMPACTION IS LESS THAN 80%.
 (C) IF THE RELATIVE DENSITY OF COMPACTION IS LESS THAN 80%, ALL MAIN LINE AND HOUSE LATERALS SHALL BE ENCASED PER S-23 OR HAVE A SPECIAL BASE COURSE PER S-21.
 (D) IF THE RELATIVE DENSITY OF COMPACTION IS 80% OR GREATER THE SPECIAL PROVISIONS (A)(C) ARE NOT REQUIRED.
 20. WHERE STATIONS ARE SHOWN AT THE END OF HOUSE LATERALS THE LOCATION OF SUCH HOUSE LATERALS SHALL NOT BE MOVED ABOVE THE STATION INDICATED.
 21. ALL HOUSE LATERAL SHALL BE 4" V.C.P. EXCEPT WHERE OTHERWISE NOTED ON PLANS.

GRADES TO WHICH THE IMPROVEMENT IS TO BE CONSTRUCTED ARE SHOWN ON PLANS AND PROFILES. GRADE POINTS FOR TOP OF CURB, CENTER LINE OF STREETS OR CENTER LINE OF ALLEYS ARE SHOWN BY CIRCLES ON PROFILES. AT ALL POINTS BETWEEN DESIGNATED POINTS THE GRADE SHALL BE ESTABLISHED SO AS TO CONFORM TO A STRAIGHT LINE DRAWN BETWEEN SAID DESIGNATED POINTS. ELEVATIONS ARE IN FEET ABOVE U.S.C. & G.S. SEA LEVEL DATUM OF 1929.
 THIS DRAWING AND THE DATA HEREON ARE HEREBY MADE A PART OF THE SPECIFICATIONS.
 BEFORE WORK CAN BE STARTED, THE CONTRACTOR MUST OBTAIN A PERMIT TO EXCAVATE IN COUNTY STREETS FROM THE L.A. COUNTY ROAD DEPT., DISTRICT OFFICE NO. 7, AND PAY A FEE TO THE COUNTY ENGINEER, ROOM 300, COUNTY ENGINEERING BUILDING, THE WEST SECOND STREET AT PALOS VERDES OFFICIALS PARKWAY REGIONAL OFFICE, SUFFICIENT TO COVER THE COST OF CONSTRUCTION INSPECTION AND RECORD PLANS.
 APPROVAL OF THIS PLAN BY THE COUNTY OF LOS ANGELES DOES NOT CONSTITUTE A REPRESENTATION AS TO THE ACCURACY OF THE LOCATION OR THE EXISTENCE OR NON-EXISTENCE OF ANY UNDERGROUND UTILITY PIPE, OR STRUCTURE WITHIN THE LIMITS OF THIS PROJECT. THIS NOTE APPLIES TO ALL PAGES.
 IF WORK IS TO BE DONE IN A STATE HIGHWAY, A PERMIT MUST BE OBTAINED FROM THE STATE OF CALIFORNIA, DIVISION OF HIGHWAYS, 120 SOUTH SPRING STREET, LOS ANGELES, CALIFORNIA.

COUNTY OF LOS ANGELES, CALIFORNIA
 JOHN A. LAMBE, COUNTY ENGINEER
 J. D. PARKHURST, CHIEF ENGINEER
 CO. SAN. DIST. NO. 12
 APPROVED BY *John R. Pano*
 ASSISTANT SANITATION ENGINEER
 APPROVED BY *Edward J. Valdes*
 OFFICE ENGINEER
 SUBMITTED BY *John R. Pano*
 REGIONAL ENGINEER
 CHECKED BY *Edward J. Valdes*
 REG. C.E. NO. 10653

COLLECT CHARGES
 AS INDICATED
Edward J. Valdes 12-13-65

J. N. 0366-48

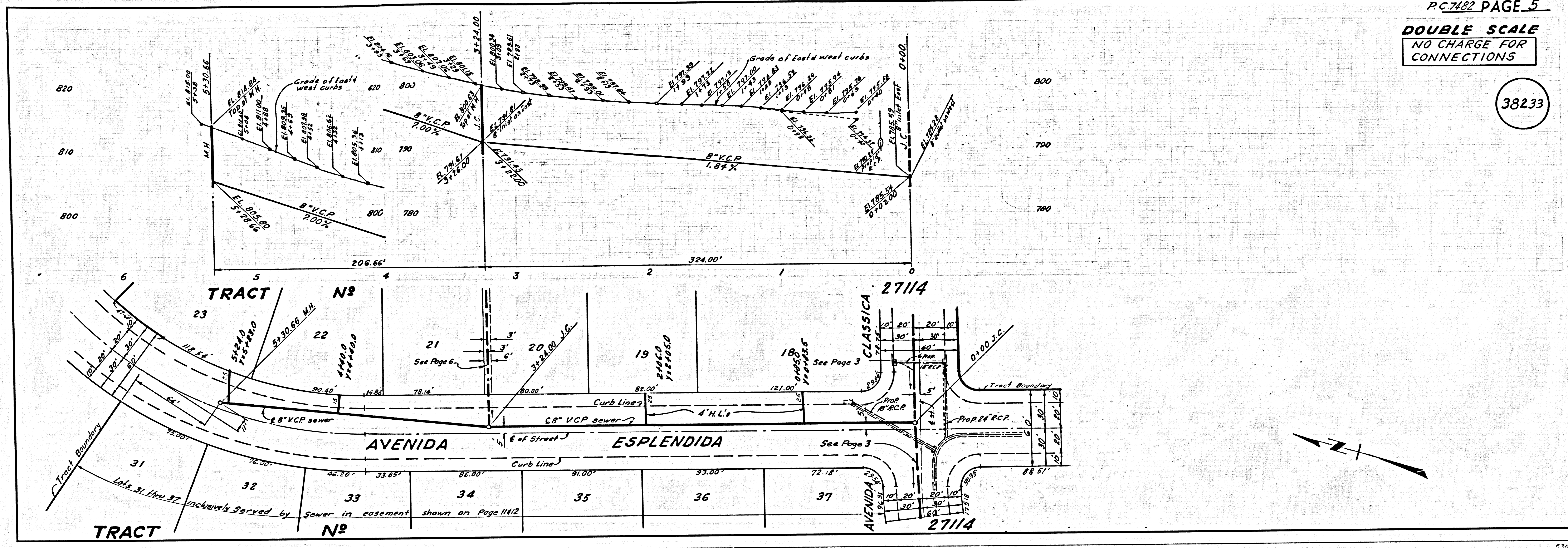


P. C. 7482 PAGE 2
DOUBLE SCALE
 NO CHARGE FOR CONNECTIONS

38230

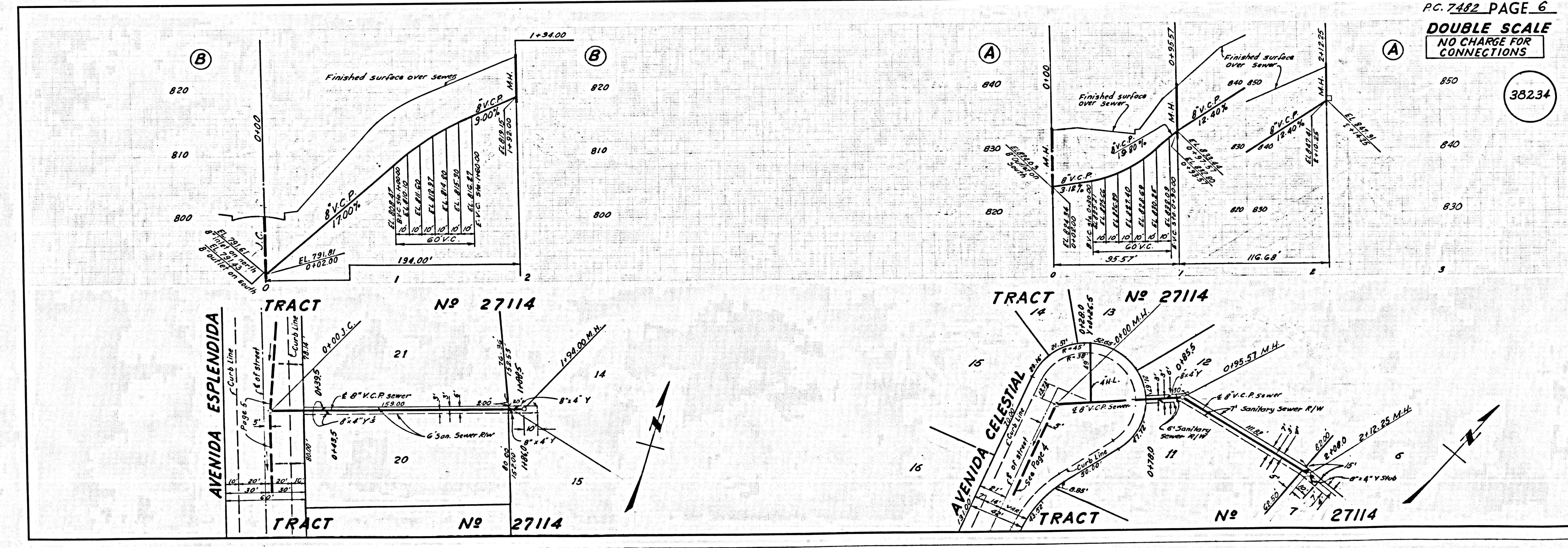
DOUBLE SCALE
NO CHARGE FOR
CONNECTIONS

38233



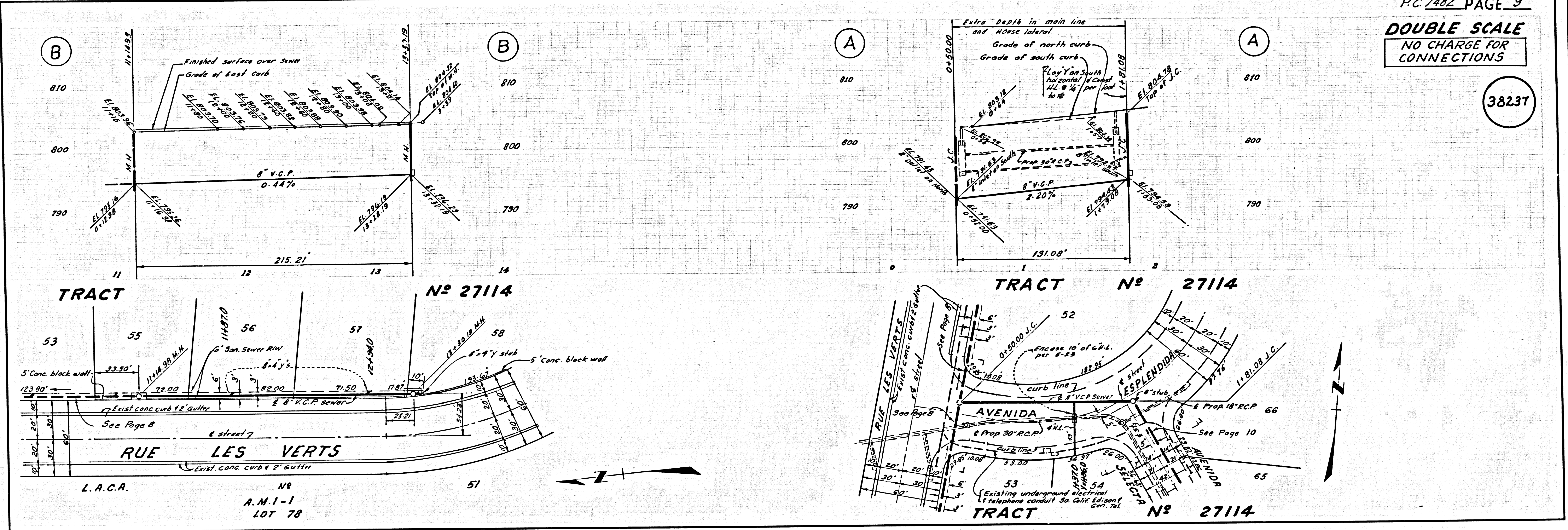
DOUBLE SCALE
NO CHARGE FOR
CONNECTIONS

38234



DOUBLE SCALE
NO CHARGE FOR
CONNECTIONS

38237



DOUBLE SCALE
NO CHARGE FOR
CONNECTIONS

38238

