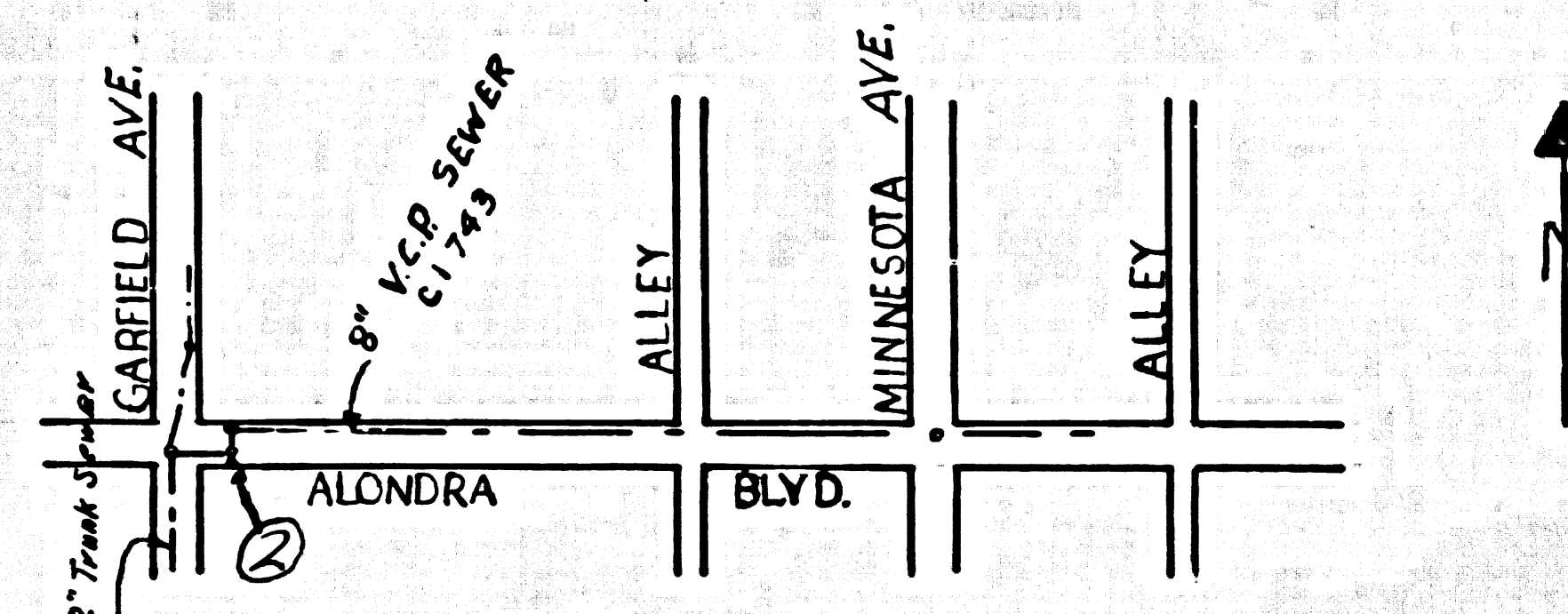


B.M. SY 808A ELEV. 66712  
 CUT SPIKE IN CONCRETE PAVEMENT  
 AT CENTER LINE INTERSECTION  
 ALONDRA BLVD + GARFIELD AVE.  
 BELLFLOWER QUAD. 1960 ADJUSTMENT



INDEX MAP  
 ALONDRA BLVD.  
 P.C. 7485  
 SCALE 1" = 200'

Revision #1  
 Move M.H. from  
 Sta. 1+20.00 to  
 Sta. 1+16.00  
 Approved:  
*[Signature]*  
 CE 10/22

PARAMOUNT BLDG. DIST. NO. 4.04

- NOTES:
1. PROVIDE STAKES ON THE PROPERTY LINE OR PROPERTY LINES PRODUCED AT RIGHT ANGLES TO THE SEWER LINE AT THE CENTER LINE OF EACH MANHOLE.
  2. NO REPRESENTATIVE OF THE CITY ENGINEER WILL SURVEY OR LAY OUT ANY PORTION OF THE WORK.
  3. THE PRIVATE ENGINEER SHALL FURNISH THE CITY ENGINEER WITH GRADE SHEETS AND STATIONING FOR ALL HOUSE LATERALS AND "T" BRANCHES AND SHALL PROVIDE STAKES FOR THEM AT THEIR PROPER LOCATIONS WITH STATIONING PLAINLY MARKED. ALL HOUSE LATERALS SHALL BE CONSTRUCTED IN A STRAIGHT ALIGNMENT AT RIGHT ANGLES FROM THE MAIN LINE SEWER EXCEPT AS SHOWN ON THE PLANS. HOUSE LATERALS FROM CHIMNEYS SHALL NOT HAVE AN ANGLE OF LESS THAN 45° WITH THE MAIN LINE SEWER. ANY CHANGE IN ALIGNMENT SHALL BE REQUESTED IN WRITING BY THE PRIVATE ENGINEER.
  4. THE PRIVATE ENGINEER SHALL FURNISH THE HOUSE LATERAL DEPTH AT THE PROPERTY LINE BELOW THE TOP OF CURB ELEVATION FOR EACH HOUSE LATERAL ON THE GRADE SHEET.
  5. NO REVISIONS SHALL BE MADE IN THESE PLANS WITHOUT THE APPROVAL OF THE CITY ENGINEER.
  6. THE CONTRACTOR SHALL NOTIFY THE CONSTRUCTION DIVISION BY TELEPHONE, MADISON 9-007, EXT. 81581, AT LEAST TWENTY-FOUR HOURS BEFORE STARTING ANY WORK UNDER THIS CONTRACT.
  7. MANHOLES SHALL BE BRICK SEWER STRUCTURES PER S-3. PRECAST CONCRETE MANHOLES PER S-25, TWO FEET ON EACH SIDE FROM THE POINT OF INTERFERENCE.
  8. USE STANDARD MANHOLE FRAMES AND COVERS, S-18, EXCEPT AS NOTED.
  9. MANHOLE TOPS IN UNIMPROVED RIGHT-OF-WAY TO BE SIX INCHES ABOVE FINISHED GRADE.
  10. USE EXTRA STRENGTH PIPE, ALL PIPE IS 36" EXCEPT AS NOTED.
  11. USE MECHANICAL COMPRESSION JOINTS FOR ALL V.C.P. JOINTS PER SPEC. S, SECS. 36, 46 & 47.
  12. IF A POWER POLE IS WITHIN THREE FEET OF THE SEWER, THE SEWER SHALL BE ENCASED, PER S-25, TWO FEET ON EACH SIDE FROM THE POINT OF INTERFERENCE.
  13. IF DURING THE COURSE OF CONSTRUCTION IT IS DETERMINED THAT THERE IS LESS THAN FOUR FEET OF COVER OVER THE TOP OF A MAIN LINE OR HOUSE LATERAL V.C.P. SEWER WHICH IS NOT INDICATED ON THE PLANS, THE PIPE SHALL BE ENCASED PER S-25, UNLESS OTHERWISE APPROVED BY THE COUNTY ENGINEER.
  14. HOUSE LATERALS TO BE CONSTRUCTED WITH INVERTS AT PROPERTY LINE 4 FEET BELOW CURB GRADE EXCEPT AS NOTED.
  15. RESURFACE ALL TRENCHES WITHIN PAVED AREAS TO MEET L.A. COUNTY ROAD DEPT. OR CALIFORNIA STATE HIGHWAY REQUIREMENTS IN ACCORDANCE WITH PERMITS.
  16. FOR ALLOWABLE LEAKAGE TEST USE FORMULA NO. 2, SPEC. S, SEC. 54.
  17. ALL STATE AND LOCAL TRENCH SAFETY ORDERS WILL BE STRICTLY ENFORCED.

NO CONNECTIONS FOR THE DISPOSAL OF INDUSTRIAL WASTES SHALL BE MADE TO SEWERS SHOWN ON THESE DRAWINGS WITHOUT WRITTEN PERMISSION FROM THE CHIEF ENGINEER AND GENERAL MANAGER OF THE COUNTY SANITATION DISTRICTS.

COLLECT CHARGES AS INDICATED  
*[Signature]*

Approved: *[Signature]*  
 Industrial Waste Division

PROFILE, ALIGNMENT AND GRADE OF P.C. 7485  
 SANITARY SEWERS PAGE 1

TO BE CONSTRUCTED IN  
 ALONDRA BLVD.

PRIVATE CONTRACT NO. 7485

w.s. 32  
 1 SHEET 2 PAGES  
 SCALE: HORIZ. 1" = 40' VERT. 1" = 4'  
 OCT 13, 1965  
 PREPARED IN THE OFFICES OF

37557

By: *[Signature]*  
 REG. C. E. NO. 10169

FOR LEGEND SEE PLAN NO. S-1

NOTE:  
 GRADES TO WHICH THIS IMPROVEMENT IS TO BE CONSTRUCTED ARE SHOWN ON PLANS AND PROFILES. GRADE POINTS FOR TOP OF CURBS, CENTER LINE OF STREETS, OR CENTER LINE OF ALLEYS ARE SHOWN BY CIRCLES ON PROFILES. AT ALL POINTS BETWEEN DESIGNATED POINTS THE GRADE SHALL BE ESTABLISHED SO AS TO CONFORM TO A STRAIGHT LINE DRAWN BETWEEN SAID DESIGNATED POINTS. ELEVATIONS ARE IN FEET ABOVE U.S.C. & G.S. MEAN SEA LEVEL DATUM OF 1929.  
 THIS DRAWING AND THE DATA HEREON ARE HEREBY MADE A PART OF THE SPECIFICATIONS.  
 WORK SHALL BE CONSTRUCTED ACCORDING TO STANDARD SPECIFICATIONS DATED JULY 25, 1962, ON FILE IN THE OFFICE OF THE CITY ENGINEER AND SHALL BE PROSECUTED ONLY IN THE PRESENCE OF THE CITY ENGINEER.  
 BEFORE WORK CAN BE STARTED, THE CONTRACTOR MUST OBTAIN A PERMIT TO EXCAVATE IN COUNTY STREETS FROM THE L.A. COUNTY ROAD DEPT., DISTRICT OFFICE NO. 10, AND MAKE A DEPOSIT WITH THE CITY OF PARAMOUNT, 1692 O. COLORADO, IN SUPPORT OF COVER THE COST OF CONSTRUCTION INSPECTION AND RECORD PLANS.  
 APPROVAL OF THIS PLAN BY THE CITY OF PARAMOUNT DOES NOT CONSTITUTE A REPRESENTATION AS TO THE ACCURACY OF THE LOCATION OF OR THE EXISTENCE OR NON-EXISTENCE OF ANY UNDERGROUND UTILITY PIPE, OR STRUCTURE WITHIN THE LIMITS OF THIS PROJECT. THIS NOTE APPLIES TO ALL PAGES.  
 IF WORK IS TO BE DONE IN A STATE HIGHWAY, A PERMIT MUST BE OBTAINED FROM THE STATE OF CALIFORNIA, DIVISION OF HIGHWAYS, 120 SOUTH SPRING STREET, LOS ANGELES, CALIFORNIA.

CITY OF PARAMOUNT, CALIFORNIA  
 JOHN A. LAMBIE, CITY ENGINEER J. D. PARKHURST, CHIEF ENGINEER  
 CO. SAN. DIST. NO. 4

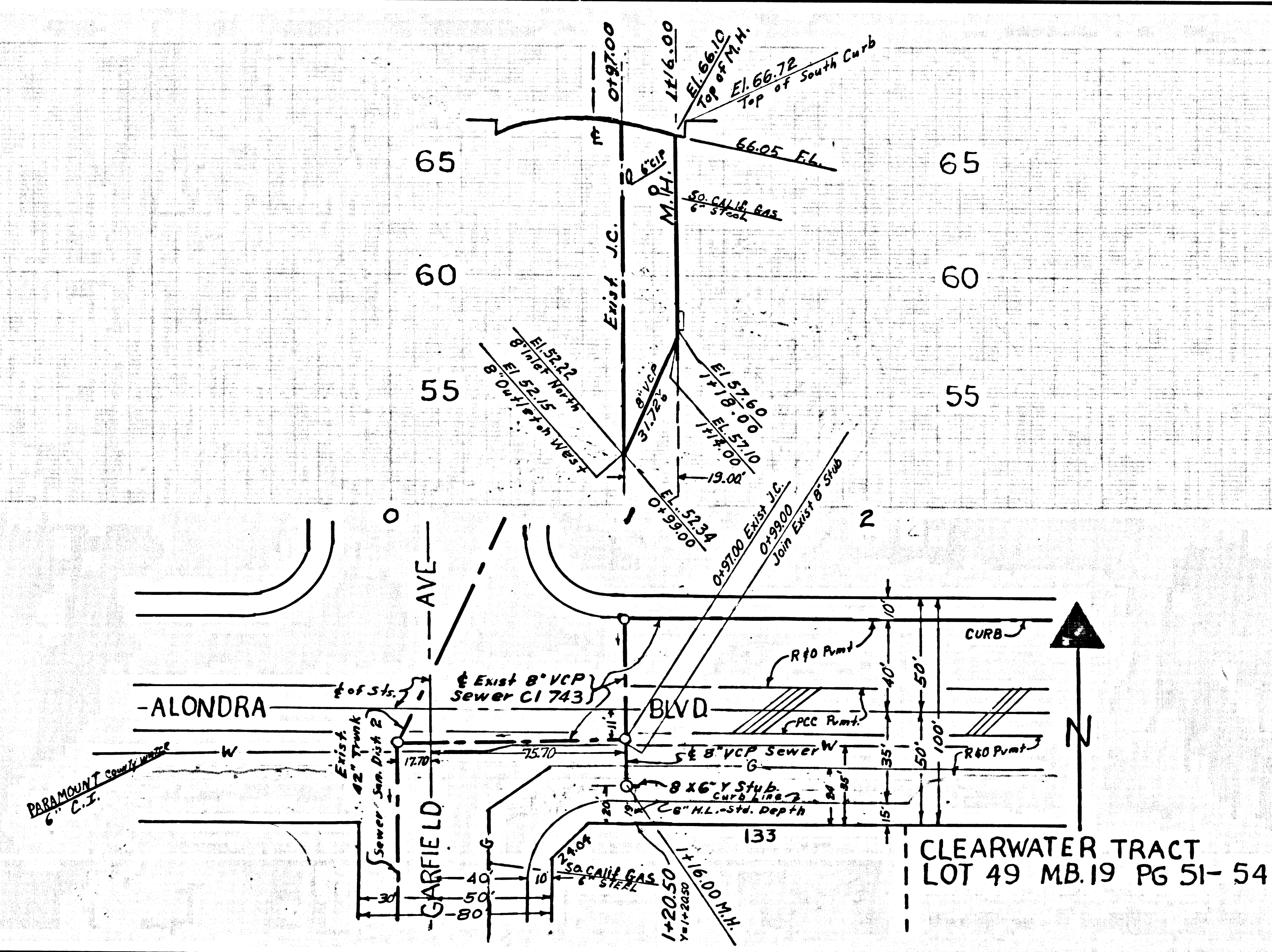
APPROVED BY: *[Signature]* ASSISTANT SANITATION ENGINEER  
 APPROVED BY: *[Signature]* OFFICE ENGINEER

SUBMITTED BY: *[Signature]* REG. C. E. NO. 3871  
 CHECKED BY: *[Signature]* 10-26-65  
 REG. C. E. NO. 7505

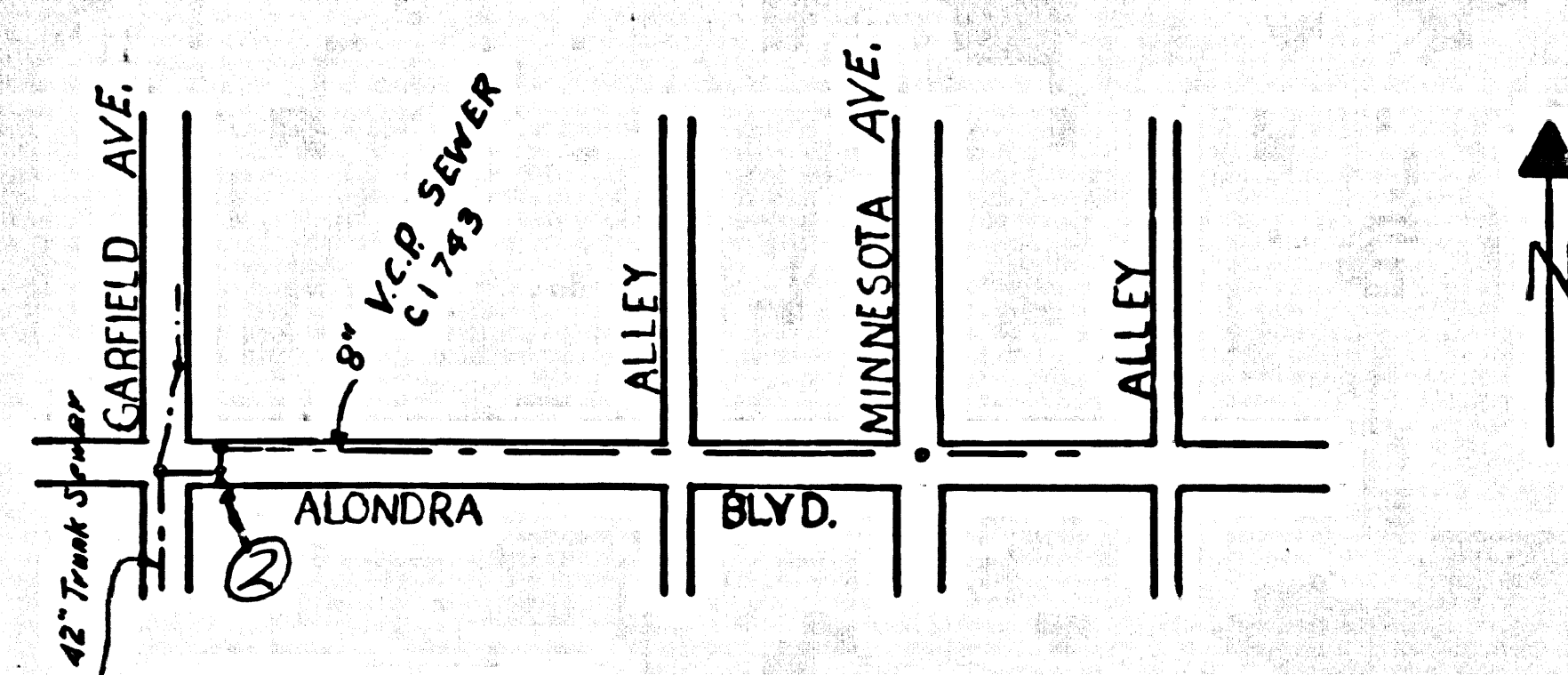
P. C. 7485 PAGE 2

NO CHARGE FOR CONNECTION

37558



B.M. SY 808A ELEV. 66.712  
 CUT SPIKE IN CONCRETE PAVEMENT  
 AT CENTER LINE INTERSECTION  
 ALONDRA BLVD + GARFIELD AVE.  
 BELFLOWER QUAD. 1960 ADJUSTMENT



Revision #1  
 Move M.H. from  
 Sta. 1+20.00 to  
 Sta. 1+16.00  
 Approved:  
*[Signature]*  
 C.E. 10112

PARAMOUNT BLDG. DIST. NO. 4.04

- NOTES:
1. PROVIDE STAKES ON THE PROPERTY LINE OR PROPERTY LINES PRODUCED AT RIGHT ANGLES TO THE SEWER LINE AT THE CENTER LINE OF EACH MANHOLE.
  2. NO REPRESENTATIVE OF THE CITY ENGINEER WILL SURVEY OR LAY OUT ANY PORTION OF THE WORK.
  3. THE PRIVATE ENGINEER SHALL FURNISH THE CITY ENGINEER WITH GRADE SHEETS AND STATIONING FOR ALL HOUSE LATERALS AND TRENCHES AND SHALL PROVIDE STAKES FOR THEM AT THEIR PROPER LOCATIONS WITH STATIONING PLAINLY MARKED. ALL HOUSE LATERALS SHALL BE CONSTRUCTED IN A STRAIGHT ALIGNMENT AT RIGHT ANGLES FROM THE MAIN LINE SEWER EXCEPT AS SHOWN ON THE PLANS. HOUSE LATERALS FROM CHIMNEYS SHALL NOT HAVE AN ANGLE OF LESS THAN 45° WITH THE MAIN LINE SEWER. ANY CHANGE IN ALIGNMENT SHALL BE REQUESTED IN WRITING BY THE PRIVATE ENGINEER.
  4. THE PRIVATE ENGINEER SHALL FURNISH THE HOUSE LATERAL DEPTH AT THE PROPERTY LINE BELOW THE TOP OF CURB ELEVATION FOR EACH HOUSE LATERAL ON THE GRADE SHEET.
  5. NO REVISIONS SHALL BE MADE IN THESE PLANS WITHOUT THE APPROVAL OF THE CITY ENGINEER.
  6. THE CONTRACTOR SHALL NOTIFY THE CONSTRUCTION DIVISION BY TELEPHONE, MADISON 9-4707, EXT. 81551, AT LEAST TWENTY-FOUR HOURS BEFORE STARTING ANY WORK UNDER THIS CONTRACT.
  7. MANHOLES SHALL BE BRICK SEWER STRUCTURES PER S. 3. PRECAST CONCRETE MANHOLES PER S-3 OR S-4 MAY BE USED AS AN ALTERNATE IN LOCATIONS APPROVED BY THE CITY ENGINEER.
  8. USE STANDARD MANHOLE FRAMES AND COVERS, S. 15, EXCEPT AS NOTED.
  9. MANHOLE TOPS IN UNIMPROVED RIGHTS-OF-WAY TO BE SIX INCHES ABOVE FINISHED GRADE.
  10. USE EXTRA STRENGTH PIPE, ALL PIPE IS EXTRA DEPTH EXCEPT AS NOTED.
  11. USE MECHANICAL COMPRESSION JOINTS FOR ALL V.C.P. JOINTS, SECS. 36, 40 & 48.
  12. IF A POWER POLE IS WITHIN THREE FEET OF THE SEWER, THE SEWER SHALL BE ENCASED, PER S. 23, TWO FEET ON EACH SIDE FROM THE POINT OF INTERFERENCE.
  13. IF DURING THE COURSE OF CONSTRUCTION IT IS DETERMINED THAT THERE IS LESS THAN FOUR FEET OF COVER OVER THE TOP OF A MAIN LINE OR HOUSE LATERAL V.C.P. SEWER WHICH IS NOT INDICATED ON THE PLANS, THE PIPE SHALL BE ENCASED PER S. 23, UNLESS OTHERWISE APPROVED BY THE COUNTY ENGINEER.
  14. HOUSE LATERALS TO BE CONSTRUCTED WITH INVERTS AT PROPERTY LINE 5 FEET BELOW CURB GRADE EXCEPT AS NOTED.
  15. RESURFACE ALL TRENCHES WITHIN PAVED AREAS TO MEET L.A. COUNTY ROAD DEPT. OR CALIFORNIA STATE HIGHWAY REQUIREMENTS IN ACCORDANCE WITH PERMITS.
  16. FOR ALLOWABLE LEAKAGE TEST USE FORMULA NO. 3, SPEC. 1, SEC. 34.
  17. ALL STATE AND LOCAL TRENCH SAFETY ORDERS WILL BE STRICTLY ENFORCED.

NO CONNECTIONS FOR THE DISPOSAL OF INDUSTRIAL WASTES SHALL BE MADE TO SEWERS SHOWN ON THESE DRAWINGS WITHOUT WRITTEN PERMISSION FROM THE CHIEF ENGINEER AND GENERAL MANAGER OF THE COUNTY SANITATION DISTRICTS.

COLLECT CHARGES AS INDICATED  
*[Signature]*

Approved: *[Signature]*  
 Industrial Waste Division

PROFILE, ALIGNMENT AND GRADE OF P.C. 7485  
 SANITARY SEWERS PAGE 1

ALONDRA BLVD.

PRIVATE CONTRACT NO. 7485

W.S. 32  
 1 SHEET 2 PAGES

SCALE: HORIZ. 1" = 100' VERT. 1" = 4'

OCT 13, 1965

37557

*[Signature]*  
 REG. C. E. NO. 20169

FOR LEGEND SEE PLAN NO. S-1

NOTE:  
 GRADES TO WHICH THIS IMPROVEMENT IS TO BE CONSTRUCTED ARE SHOWN ON PLANS AND PROFILES. GRADE POINTS FOR TOP OF CURBS, CENTER LINE OF STREETS, OR CENTER LINE OF ALLEYS ARE SHOWN BY CIRCLES ON PROFILES. AT ALL POINTS BETWEEN DESIGNATED POINTS THE GRADE SHALL BE ESTABLISHED SO AS TO CONFORM TO A STRAIGHT LINE DRAWN BETWEEN SAID DESIGNATED POINTS. ELEVATIONS ARE IN FEET ABOVE U.S.C. & G.S. SEA LEVEL DATUM OF 1929.  
 THIS DRAWING AND THE DATA HEREON ARE HEREBY MADE A PART OF THE SPECIFICATIONS.  
 WORK SHALL BE CONSTRUCTED ACCORDING TO STANDARD SPECIFICATIONS DATED JULY 22, 1962, ON FILE IN THE OFFICE OF THE CITY ENGINEER AND SHALL BE PROSECUTED ONLY IN THE PRESENCE OF THE CITY ENGINEER.  
 BEFORE WORK CAN BE STARTED, THE CONTRACTOR MUST OBTAIN A PERMIT TO OCCUPY COUNTY STREETS FROM THE L.A. COUNTY ROAD DEPT. DISTRICT OFFICE NO. 16-250 AND MAKE A DEPOSIT WITH THE CITY OF PARAMOUNT 16-250 COL. C.R.O. NO. 16-250 IN ACCORDANCE WITH THE CITY OF PARAMOUNT SPECIFICATIONS TO COVER THE COST OF CONSTRUCTION INSPECTION AND RECORD PLANS.  
 APPROVAL OF THIS PLAN BY THE CITY OF PARAMOUNT DOES NOT CONSTITUTE A REPRESENTATION AS TO THE ACCURACY OF THE LOCATION OF OR THE EXISTENCE OR NON-EXISTENCE OF ANY UNDERGROUND UTILITY PIPE, OR STRUCTURE WITHIN THE LIMITS OF THIS PROJECT. THIS NOTE APPLIES TO ALL PAGES.  
 ALL WORK IS TO BE DONE IN A STATE HIGHWAY. A PERMIT MUST BE OBTAINED FROM THE STATE OF CALIFORNIA, DIVISION OF HIGHWAYS, 180 SOUTH BRINLEY STREET, LOS ANGELES, CALIFORNIA.

CITY OF PARAMOUNT, CALIFORNIA  
 JOHN A. LAMBIE, CITY ENGINEER I. D. PARKHURST, CHIEF ENGINEER  
 CO. SAN. DIST. NO. 4.04

APPROVED BY: *[Signature]* ASSISTANT SANITATION ENGINEER  
 APPROVED BY: *[Signature]* OFFICE ENGINEER

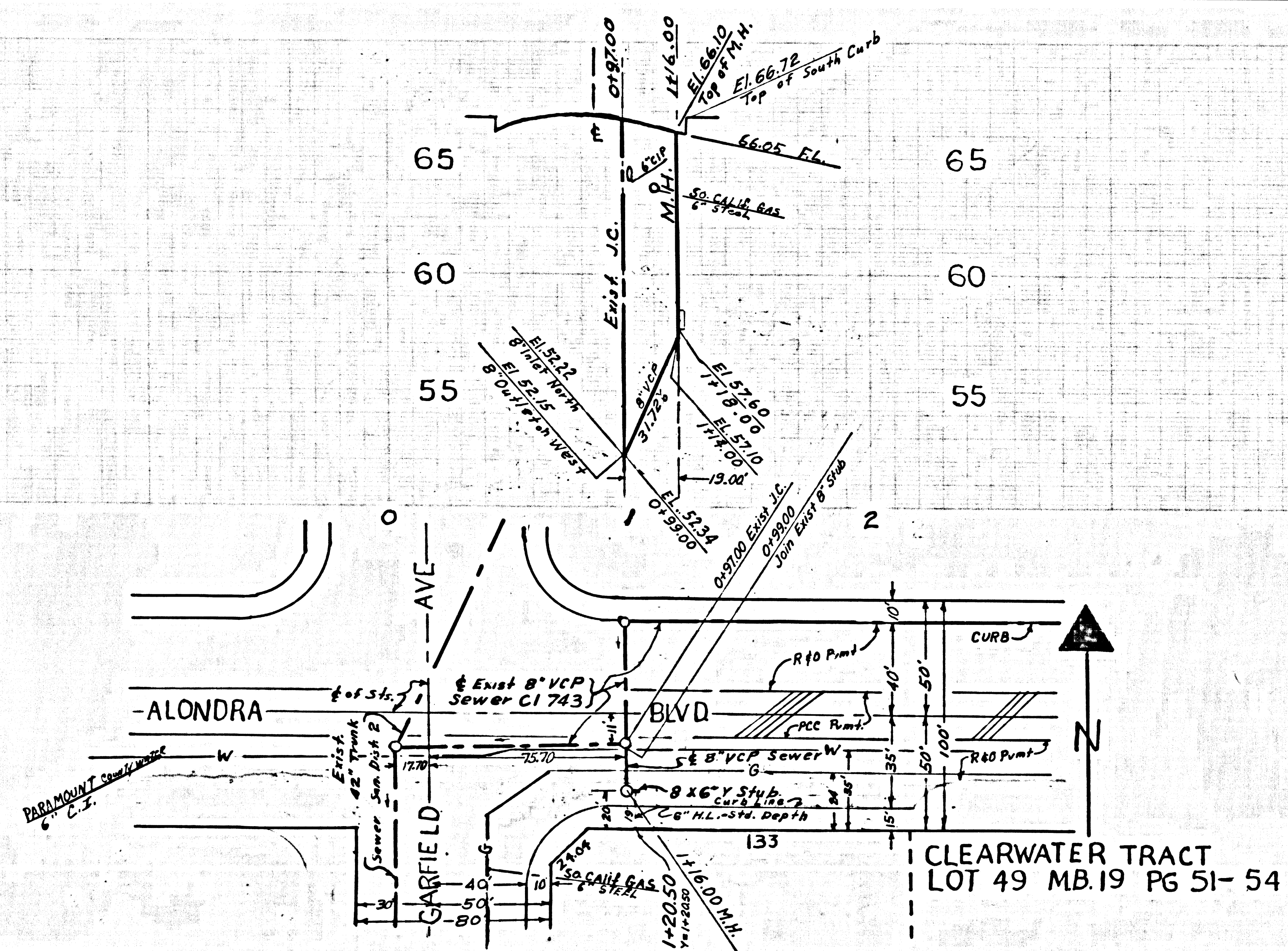
SUBMITTED BY: *[Signature]*  
 LOS ANGELES ARCHITECTURAL ENGINEER, REG. 3871

CHECKED BY: *[Signature]*  
 REG. C.E. NO. 20169

P. C. 7485 PAGE 2

NO CHARGE FOR CONNECTION

37558



CLEARWATER TRACT  
 LOT 49 MB. 19 PG 51-54