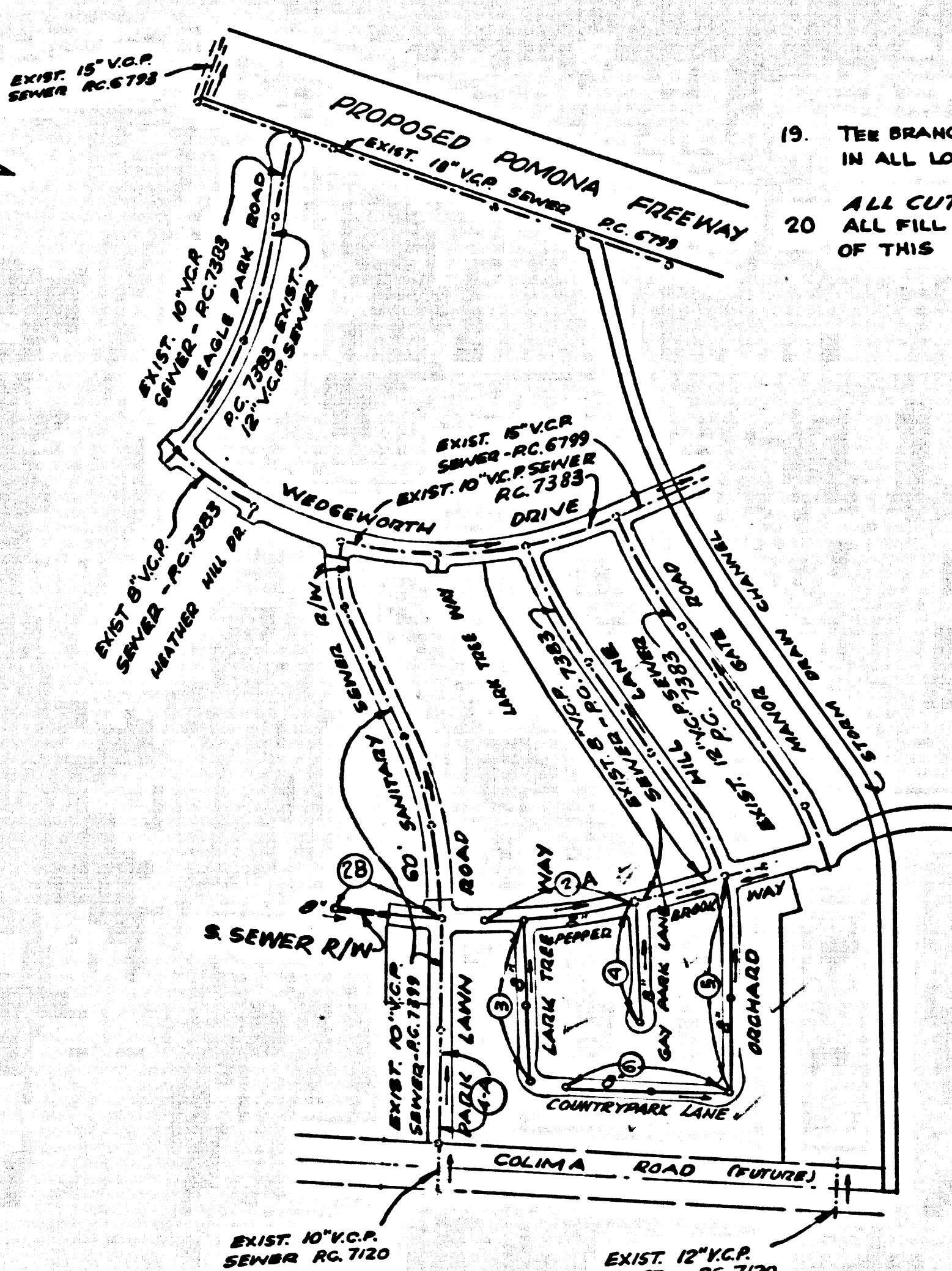


B.M. B.G. 1730 ELEV. 418.512
 LET (MND. B.M.) ON NORTH SIDE OF
 CONC. WALK TO HOUSE NO. 1344
 INNINGFRONT ROAD 50' EAST OF S. AND
 340' NORTH OF S. BONITA VISTA LANE.
 OTTERBEIN QUAD. 1965.



- 19. THE BRANCHES MAY BE USED INSTEAD OF WYE BRANCHES IN ALL LOCATIONS, EXCEPT AS NOTED.
- 20. ALL CUTS TO BE MADE AND ALL FILL TO BE IN PLACE PRIOR TO THE CONSTRUCTION OF THIS PROJECT.

REVISED BY: HOPEN, HEDLUND & DARBY INC.
 Approved: *[Signature]* DATE 7-19-67
 R.C.E. 14075

REVISION: CHANGED R/W WIDTH OF PEPPER BROOK WAY FROM 60' TO 66', 58' & 54' AND LARK TREE WAY, COUNTRY PARK LANE, ORCHARD HILL LANE AND GAY PARK LANE FROM 54' TO 58', H.L.'S CHANGED FROM 6" VCP TO 4" VCP EXCEPT AS NOTED.

APPROVED: COUNTY OF LOS ANGELES
 BY: *[Signature]* DATE 8-14-67
 R.C.E. 10443

REVISED BY: HOPEN, HEDLUND & DARBY INC.
 Approved: *[Signature]* DATE 6-16-67
 R.C.E. 14075

REVISION: 1. ADD MAIN LINE SEWER ON PEPPER BROOK WAY FROM STA. 0+55.00 TO STA. 3+24.94 PAGE 2B. CHANGE LOT NUMBERS AND GLENGATE DRIVE CHANGED TO COUNTRY PARK LANE.

APPROVED: COUNTY OF LOS ANGELES
 BY: *[Signature]* DATE 6-27-67
 R.C.E. 10443

LA PUENTE BLDG. DIST. NO. 2

- NOTES:
1. PROVIDE STAKES ON THE PROPERTY LINE OR PROPERTY LINES PRODUCED AT RIGHT ANGLES TO THE SEWER LINE AT THE CENTER LINE OF EACH MANHOLE.
 2. NO REPRESENTATIVE OF THE COUNTY ENGINEER WILL SURVEY OR LAY OUT ANY PORTION OF THE WORK.
 3. THE PRIVATE ENGINEER SHALL FURNISH THE COUNTY ENGINEER WITH GRADIN SHEETS AND STATIONING FOR ALL HOUSE LATERALS AND "T" BRANCHES AND SHALL PROVIDE STAKES FOR THEM AT THEIR PROPER LOCATIONS WITH STATIONING PLAINLY MARKED. ALL HOUSE LATERALS SHALL BE CONSTRUCTED IN A STRAIGHT ALIGNMENT AT RIGHT ANGLES FROM THE MAIN LINE SEWER EXCEPT AS SHOWN ON THE PLANS. HOUSE LATERALS FROM CHIMNEYS SHALL NOT HAVE AN ANGLE OF LESS THAN 45° WITH THE MAIN LINE SEWER. ANY CHANGE IN ALIGNMENT SHALL BE REQUESTED IN WRITING BY THE PRIVATE ENGINEER.
 4. THE PRIVATE ENGINEER SHALL FURNISH THE HOUSE LATERAL DEPTH AT THE PROPERTY LINE BELOW THE TOP OF CURB ELEVATION FOR EACH HOUSE LATERAL ON THE GRADE SHEET.
 5. NO REVISIONS SHALL BE MADE IN THESE PLANS WITHOUT THE APPROVAL OF THE COUNTY ENGINEER.
 6. THE CONTRACTOR SHALL NOTIFY THE CONSTRUCTION DIVISION BY TELEPHONE, MADISON 9-4747, EXT. 81557, AT LEAST TWENTY-FOUR HOURS BEFORE STARTING ANY WORK UNDER THIS CONTRACT.
 7. ALL STRUCTURES SHALL BE EITHER BRICK MANHOLES PER S-8 OR PRECAST CONCRETE MANHOLES PER S-5 OR S-6 EXCEPT AS NOTED.
 8. USE STANDARD MANHOLE FRAMES AND COVERS, S-15, 2000#-AS-HOBBY.
 9. MANHOLE TOPS IN UNIMPROVED RIGHTS-OF-WAY TO BE SIX INCHES ABOVE FINISHED GRADE.
 10. USE EXTRA STRENGTH PIPE. ALL PIPE IS STANDARD DEPTH EXCEPT AS NOTED.
 11. USE MECHANICAL COMPRESSION JOINTS FOR ALL V.C.P. JOINTS PER SPEC., SECS. 34, 48 & 49.
 12. IF A POWER POLE IS WITHIN THREE FEET OF THE SEWER, THE SEWER SHALL BE ENCASED, PER S-23, TWO FEET ON BOTH SIDES FROM THE POINT OF INTERFERENCE.
 13. IF DURING THE COURSE OF CONSTRUCTION IT IS DETERMINED THAT THERE IS LESS THAN FOUR FEET OF COVER OVER THE TOP OF A MAIN LINE OR HOUSE LATERAL V.C.P. SEWER WHICH IS NOT INDICATED ON THE PLANS, THE PIPE SHALL BE ENCASED PER S-23, UNLESS OTHERWISE APPROVED BY THE COUNTY ENGINEER.
 14. HOUSE LATERALS TO BE CONSTRUCTED WITH INVERTS AT PROPERTY LINE 4 FEET BELOW CURB GRADE EXCEPT AS NOTED.
 15. REINFORCE ALL TRENCHES WITHIN PAVED AREAS TO MEET L.A. COUNTY ROAD DEPT. OR CALIFORNIA STATE HIGHWAY REQUIREMENTS IN ACCORDANCE WITH PERMITS.
 16. FOR ALLOWABLE LEAKAGE TEST USE FORMULA NO. 2, SPEC. 5, SEC. 54.
 17. ALL STATE AND LOCAL TRENCH SAFETY ORDERS WILL BE STRICTLY ENFORCED.
 18. FIGURES IN CIRCLES AT ENDS OF HOUSE LATERALS INDICATE HOUSE LATERALS SHALL BE CONSTRUCTED WITH 1/4" RISE PER FT. TO PROPERTY LINE.

Lots 39, 40 & 70 served by house laterals constructed under Private Contract No. 7383, and Lots 1-3 and 7-12 served by house laterals constructed under Private Contract No. 7389.

ISSUE NO HOUSE CONNECTION PERMITS UNTIL P.C. 7383 HAS BEEN ACCEPTED

COLLECT CHARGES AS INDICATED
 D. R. Olson 5-2-66

INDU CONNECTIONS FOR THE DISPOSAL OF INDUSTRIAL WASTES SHALL BE MADE TO SEWERS SHOWN ON THESE DRAWINGS WITHOUT WRITTEN PERMISSION FROM THE CHIEF ENGINEER AND GENERAL MANAGER OF THE COUNTY SANITATION DISTRICTS.

PROFILE, ALIGNMENT AND GRADE OF
 SANITARY SEWERS PAGE 1
 CONSTRUCTED IN

TRACT N° 27716 40203

PRIVATE CONTRACT NO. 7493

W.S. 38
 5 SHEETS, 6 PAGES
 SCALE: VERT. 1" = 4' HORIZ. 1" = 40'
 OCTOBER 1965
 PREPARED IN THE OFFICES OF

HOPEN, HEDLUND & DARBY INC.
 By: *[Signature]*
 REG. C. E. NO. 14075

FOR LEGEND SEE PLAN NO. S-1

NOTES:
 GRADES TO WHICH THE IMPROVEMENT IS TO BE CONSTRUCTED ARE SHOWN ON PLANS AND PROFILES. GRADE POINTS FOR TOP OF CURBS, CENTER LINE OF STREETS, OR CENTER LINE OF ALLEYS ARE SHOWN BY CIRCLES ON PROFILES. AT ALL POINTS BETWEEN DESIGNATED POINTS THE GRADE SHALL BE ESTABLISHED SO AS TO COMFORM TO A STRAIGHT LINE DRAWN BETWEEN SAID DESIGNATED POINTS. ELEVATIONS ARE IN FEET ABOVE U.S.C. & G.S. MEAN LEVEL DATUM OF 1929.

THE DRAWING AND THE DATA HEREON ARE HEREBY MADE A PART OF THE SPECIFICATIONS. NO OTHER SPECIFICATIONS OR CONDITIONS SHALL BE CONSIDERED UNLESS SPECIFICALLY REFERRED TO IN THE DRAWING. THE CONTRACTOR SHALL BE RESPONSIBLE FOR OBTAINING ALL NECESSARY PERMITS FROM THE COUNTY ENGINEER AND SHALL BE PROSECUTED ONLY IN THE PRESENCE OF THE COUNTY ENGINEER.

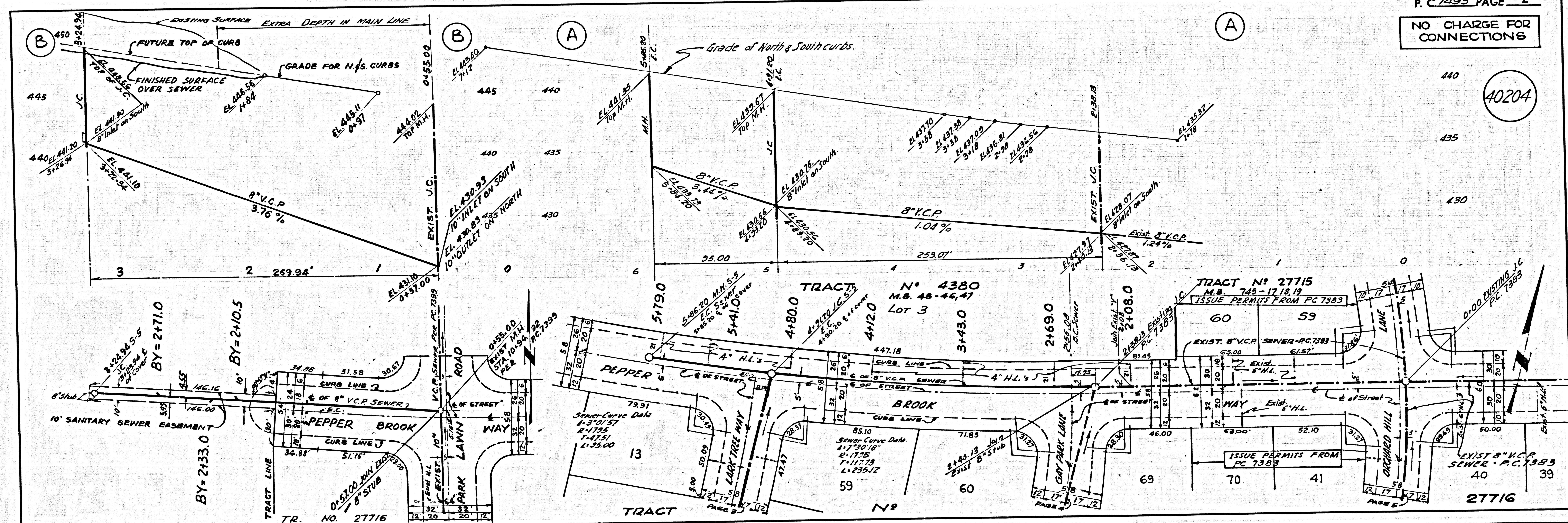
NO WORK SHALL BE STARTED UNTIL THE CONTRACTOR HAS OBTAINED A PERMIT TO EXCAVATE IN COUNTY STREETS FROM THE L.A. COUNTY ROAD DEPT., DISTRICT OFFICE NO. 1, AND PAY A FEE TO THE COUNTY ENGINEER, ROOM 330, COUNTY ENGINEERING BUILDING, 125 WEST SECOND STREET ON THE COUNTY OF LOS ANGELES REGIONAL OFFICE. PERMIT TO COVER THE COST OF THE PROJECT. THIS NOTE APPLIES TO ALL PAGES.

APPROVAL OF THE PLAN BY THE COUNTY OF LOS ANGELES DOES NOT CONSTITUTE A REPRESENTATION AS TO THE ACCURACY OF THE LOCATION OR THE EXISTENCE OR NON-EXISTENCE OF ANY UNDERGROUND UTILITY PIPE, OR STRUCTURE WITHIN THE LIMITS OF THIS PROJECT. IF WORK IS TO BE DONE IN A STATE HIGHWAY, A PERMIT MUST BE OBTAINED FROM THE STATE OF CALIFORNIA, DIVISION OF HIGHWAYS, 1200 SOUTH SPRING STREET, LOS ANGELES, CALIFORNIA.

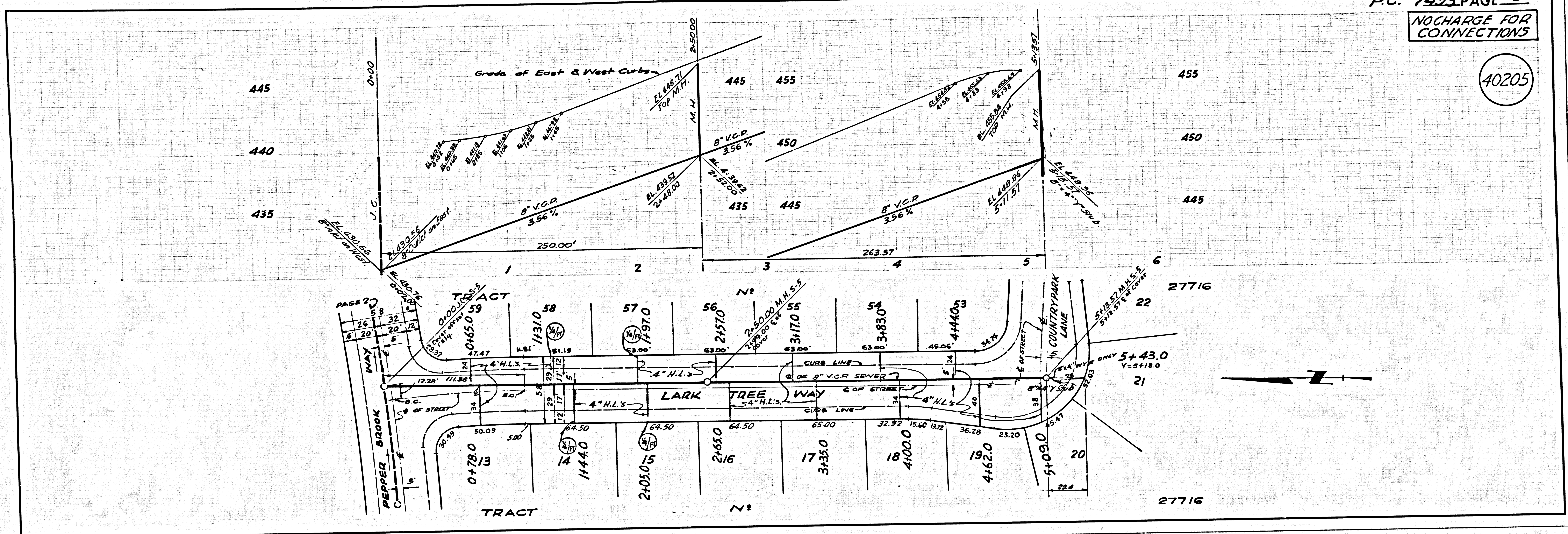
COUNTY OF LOS ANGELES, CALIFORNIA
 JOHN A. LAMBE, COUNTY ENGINEER J. D. PARKHURST, CHIEF ENGINEER
 CO. SAN. DIST. NO. 2
 APPROVED BY: *[Signature]* APPROVED BY: *[Signature]*
 ASSISTING SANITATION ENGINEER CHIEF ENGINEER

SUBMITTED BY: *[Signature]*
 SANITATION ENGINEER
 CHECKED BY: *[Signature]* 5-16-66
 REG. C. E. NO. 10443

J. N. 0366.55



40205



40206

