

B.M. ELEV. 833.570
 L.A.C.E.P. 26170, Pg. 30 Standard Traverse
 Monument P.C. 21 (738) E of 10th Street
 St. 738' East of the West City Boundary
 of Los Angeles 1950 Adj.
 QUAD. 19

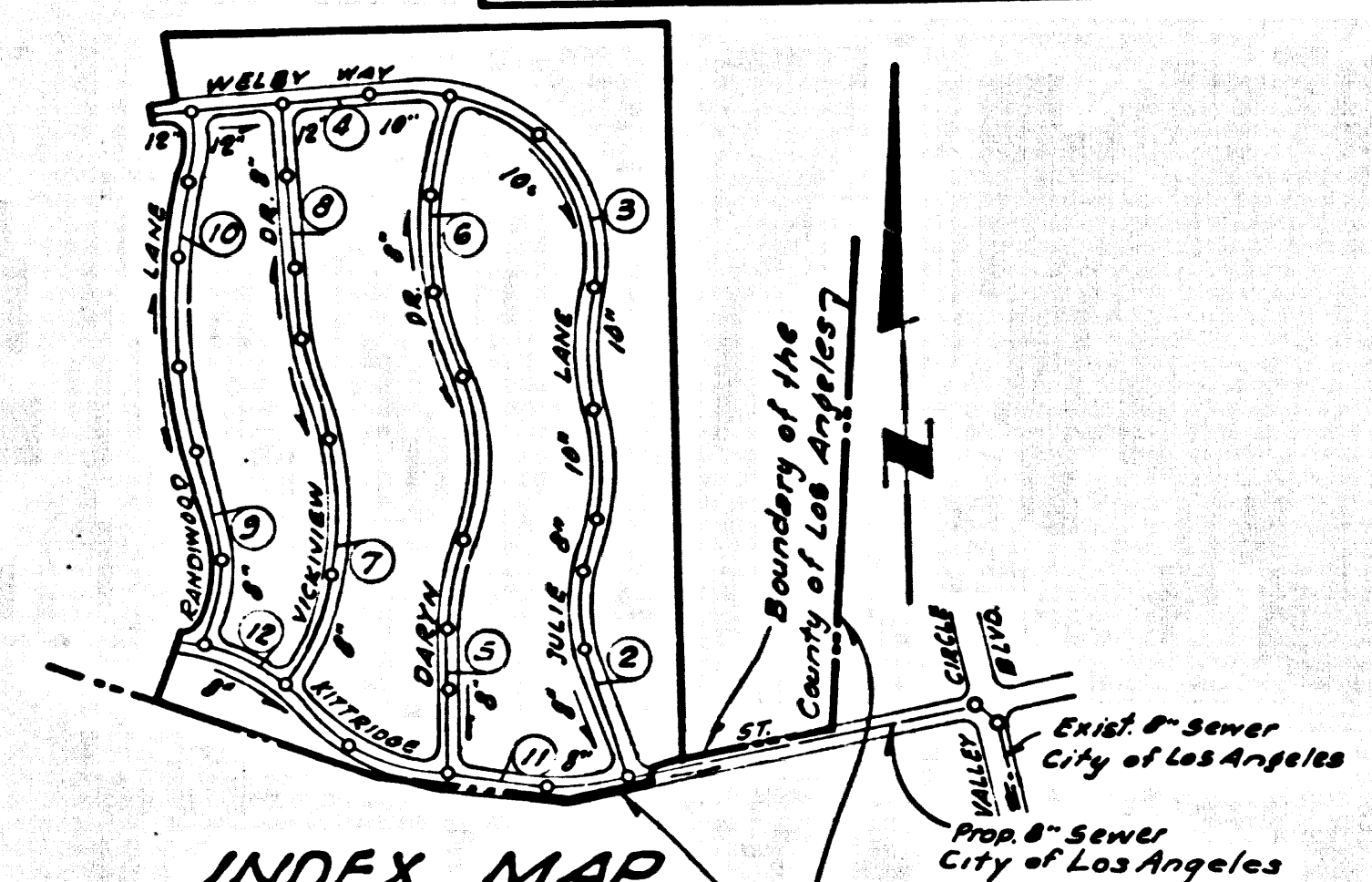
REVISION 3-10-66
 All pages Delete 4 lots on Randwood Lane and
 renumber lots from 42 on
 Page 3 Change 8" V.C.P. to 10" V.C.P. between
 Sta. 1540.00 & 1812.00
 Page 4 a) Change 8" V.C.P. to 10" V.C.P. between
 Sta. 1812.00 & 2117.50
 b) Change 8" V.C.P. to 12" V.C.P. between
 Sta. 2117.50 & 2713.00
 Pages 6, 7, 10 Change 18" pipe & grades at lower reach
 to agree with new pipe size.

Approved *Edward J. Valachi*
 OFFICE OF COUNTY ENGINEER
 Approved *Richard J. King*
 ASSISTANT SANITATION ENGINEER
 L.A.S. VIRGENES MUNICIPAL
 WATER DISTRICT
 Approved *Walter Campbell*
 REG. C. E. NO. 11535 8/1/66

REVISION 1 12-31-65
 PAGE 3 - CHANGE 8" V.C.P. TO 10"
 V.C.P. BETWEEN STA.
 8+57.16 AND 13+00.00
 APPROVED *Edward J. Valachi*
 OFFICE OF COUNTY ENGINEER

**NO CONSTRUCTION TO BE ALLOWED
 ON PAGE 2 (STA. 0+00 TO 0+20) AND ON
 PAGE 11 (STA. 0+00 TO 1+50) UNTIL PLANS
 ARE APPROVED BY THE CITY OF LOS
 ANGELES.**

**ALLOW NO CONNECTIONS UNTIL
 OUTLET SEWERS ARE CONSTRUCTED**



INDEX MAP
 TRACT No. 23762
 P.C. 7494
 Scale: 1" = 600'
 Note: Numbers in circles indicate
 Page Number.

CITY OF LOS ANGELES
 SUBMITTED April 5, 1966
 BY *Richard J. King*
 DIVISION OF DISTRICT ENGINEER
Edward J. Valachi
 ASSISTANT COUNTY ENGINEER (DESIGN)
 APPROVED *Walter Campbell* 12-23-65
 CITY ENGINEER

**DOUBLE SCALE
 CALABASAS BLDG. DIST. NO. 91**

- NOTES:
- PROVIDE STAKES ON THE PROPERTY LINE OR PROPERTY LINES PRODUCED AT RIGHT ANGLES TO THE SEWER LINE AT THE CENTER LINE OF EACH MANHOLE.
 - NO REPRESENTATIVE OF THE COUNTY ENGINEER WILL SURVEY OR LAY OUT ANY PORTION OF THE WORK.
 - THE PRIVATE ENGINEER SHALL FURNISH THE COUNTY ENGINEER WITH GRADE SHEETS AND STATIONING FOR ALL HOUSE LATERALS AND "T" BRANCHES AND SHALL PROVIDE STAKES FOR THEM AT THEIR PROPER LOCATIONS WITH STATIONING PLAINLY MARKED. ALL HOUSE LATERALS SHALL BE CONSTRUCTED IN A STRAIGHT ALIGNMENT AT RIGHT ANGLES FROM THE MAIN LINE SEWER EXCEPT AS SHOWN ON THE PLANS. HOUSE LATERALS FROM CHIMNEYS SHALL NOT HAVE AN ANGLE OF LESS THAN 45° WITH THE MAIN LINE SEWER. ANY CHANGE IN ALIGNMENT SHALL BE REQUESTED IN WRITING BY THE PRIVATE ENGINEER.
 - THE PRIVATE ENGINEER SHALL FURNISH THE HOUSE LATERAL DEPTH AT THE PROPERTY LINE BELOW THE TOP OF CURB ELEVATION FOR EACH HOUSE LATERAL ON THE GRADE SHEET.
 - NO REVISIONS SHALL BE MADE IN THESE PLANS WITHOUT THE APPROVAL OF THE COUNTY ENGINEER.
 - THE CONTRACTOR SHALL NOTIFY THE CONSTRUCTION DIVISION BY TELEPHONE, MAINSON 5-4247, EXT. 81381, AT LEAST TWENTY-FOUR HOURS BEFORE STARTING ANY WORK UNDER THIS CONTRACT.
 - MANHOLES SHALL BE BRICK SEWER STRUCTURES PER S.S. RECAST CONCRETE MANHOLES PER S-3 OR S-4 MAY BE USED AS AN ALTERNATE IN LOCATIONS APPROVED BY THE COUNTY ENGINEER.
 - USE STANDARD MANHOLE FRAMES AND COVERS, S-15, EXCEPT AS NOTED.
 - MANHOLE TOPS IN UNIMPROVED RIGHTS-OF-WAY TO BE SIX INCHES ABOVE FINISHED GRADE.
 - USE EXTRA STRENGTH PIPE. ALL PIPE IS STANDARD DEPTH EXCEPT AS NOTED.
 - USE MECHANICAL COMPRESSION JOINTS FOR ALL V.C.P. JOINTS PER SPEC., SECT. 36, 46 & 49.
 - IF A POWER POLE IS WITHIN THREE FEET OF THE SEWER, THE SEWER SHALL BE ENCASED, PER S-23, TWO FEET ON EACH SIDE FROM THE POINT OF INTERFERENCE.
 - IF DURING THE COURSE OF CONSTRUCTION IT IS DETERMINED THAT THERE IS LESS THAN FOUR FEET OF COVER OVER THE TOP OF A MAIN LINE OR HOUSE LATERAL V.C.P. SEWER WHICH IS NOT INDICATED ON THE PLANS, THE PIPE SHALL BE ENCASED PER S-23, UNLESS OTHERWISE APPROVED BY THE COUNTY ENGINEER.
 - HOUSE LATERALS TO BE CONSTRUCTED WITH INVERTS AT PROPERTY LINE 6 FEET BELOW CURB GRADE EXCEPT AS NOTED.
 - REUSEFARE ALL TRENCHES WITHIN PAVED AREAS TO MEET L.A. COUNTY ROAD DEPT. OR CALIFORNIA STATE HIGHWAY REQUIREMENTS IN ACCORDANCE WITH PERMITS.
 - FOR ALLOWABLE LEAKAGE TEST USE FORMULA NO. 2, SPEC. 1, SEC. 54.
 - ALL STATE AND LOCAL TRENCH SAFETY ORDERS WILL BE STRICTLY ENFORCED.
 - CONSTRUCTION IN FILLED AREAS:
 a. AN ACCEPTABLE CERTIFICATION OF CONSTRUCTION TESTS RESULTS SHALL BE SUBMITTED TO THE CONSTRUCTION DIVISION. CONNECTION TESTS ARE TO BE MADE IN ACCORDANCE WITH A.S.T.M. STANDARD METHOD OF TEST D-690-48T.
 b. NO CONSTRUCTION IS PERMITTED IN THE FILLED AREAS WHERE THE RELATIVE DENSITY OF CONSTRUCTION IS LESS THAN 80%.
 c. IF THE RELATIVE DENSITY OF CONSTRUCTION IS LESS THAN 80% ALL MAIN LINE AND HOUSE LATERALS SHALL BE ENCASED PER S-23 OR HAVE A SPECIAL BASE COURSE PER S-21 CASE III SPECIAL MANHOLE BASES PER S-16 ARE REQUIRED.
 d. IF THE RELATIVE DENSITY OF CONSTRUCTION IS 80% OR GREATER THE SPECIAL PROVISIONS IN C ARE NOT REQUIRED.

**COLLECT CHARGES
 AS INDICATED**
L. Linton 12/23/65

PROFILE, ALIGNMENT AND GRADE OF
SANITARY SEWERS PAGE 1
 TO BE CONSTRUCTED IN

**TRACT No. 23762
 PRIVATE CONTRACT NO. 7494**

W.S. 60
 G SHEETS, 12 PAGES
 SCALE: HORIZ. 1" = 80' VERT. 1" = 8'
 NOVEMBER 1, 1965
 PREPARED IN THE OFFICES OF

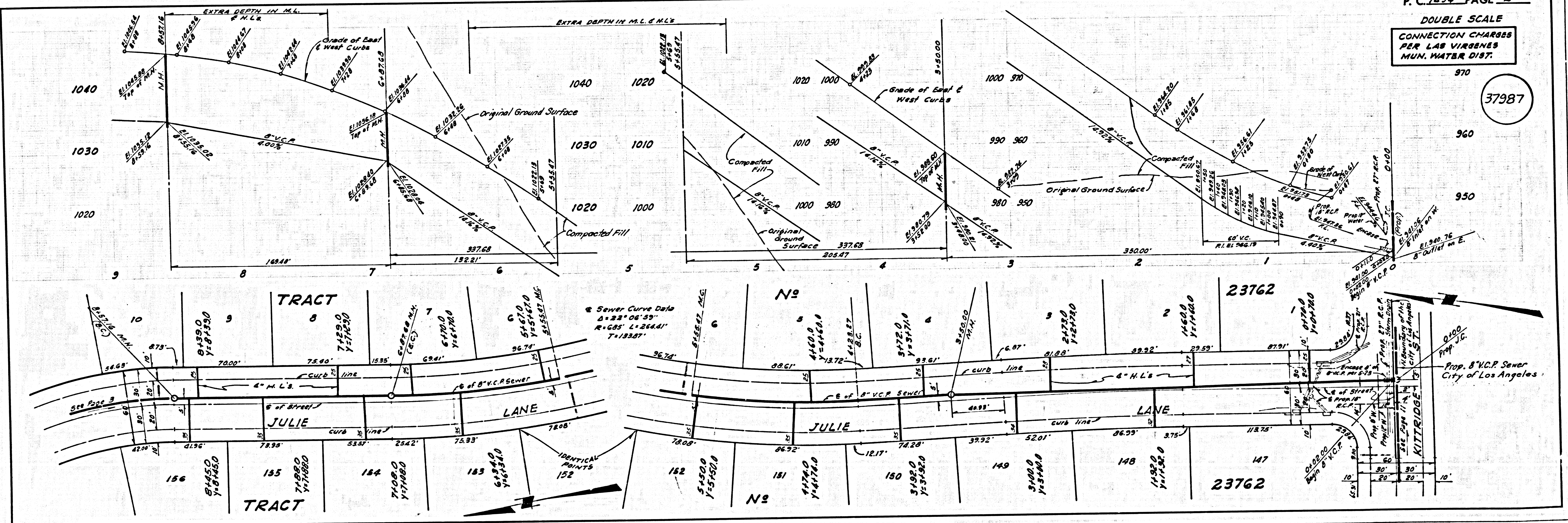
MCINTIRE & QUIROS INC.
Walter Campbell
 REG. C. E. NO. 11535

FOR LEGEND SEE PLAN NO. S-1

NOTE:
 GRADES TO WHICH THIS IMPROVEMENT IS TO BE CONSTRUCTED ARE SHOWN ON PLANS AND PROFILES. GRADE POINTS FOR TOP OF CURBS, CENTER LINE OF STREETS, OR CENTER LINE OF ALLEYS ARE SHOWN BY CIRCLES ON PROFILES. AT ALL POINTS BETWEEN DESIGNATED POINTS THE GRADE SHALL BE ESTABLISHED SO AS TO CONFORM TO A STRAIGHT LINE DRAWN BETWEEN SAID DESIGNATED POINTS. ELEVATIONS ARE IN FEET ABOVE U.S.C. & G.S. SEA LEVEL DATUM OF 1929.
 THIS DRAWING AND THE DATA HEREON ARE HEREBY MADE A PART OF THE SPECIFICATIONS FOR THE CONSTRUCTION OF THE SEWERAGE SYSTEM. THE CONTRACTOR SHALL BE RESPONSIBLE FOR OBTAINING ALL NECESSARY PERMITS AND FOR THE COST OF THE SAME.
 CONSTRUCTION INSPECTION AND RECORD PLANS:
 APPROVAL OF THIS PLAN BY THE COUNTY OF LOS ANGELES DOES NOT CONSTITUTE A REPRESENTATION AS TO THE ACCURACY OF THE LOCATION OF OR THE EXISTENCE OR NON-EXISTENCE OF ANY UNDERGROUND UTILITY PIPE, OR STRUCTURE WITHIN THE LIMITS OF THIS PROJECT. THIS NOTE APPLIES TO ALL PAGES.
 IF WORK IS TO BE DONE IN A STATE HIGHWAY, A PERMIT MUST BE OBTAINED FROM THE STATE OF CALIFORNIA, DIVISION OF HIGHWAYS, 126 SOUTH BRIDGE STREET, LOS ANGELES, CALIFORNIA.

COUNTY OF LOS ANGELES, CALIFORNIA
 JOHN A. LAMBIE, COUNTY ENGINEER
 L.A.S. VIRGENES MUNICIPAL WATER DISTRICT
 APPROVED BY *Richard J. King* ASSISTANT SANITATION ENGINEER
 APPROVED BY *Walter Campbell* GENERAL INSTR. CHIEF ENGINEER
 SUBMITTED BY *Walter Campbell* REGIONAL ENGINEER
 CHECKED BY *Edward J. Valachi* 12-23-65
 REG. C. E. NO. 11535

J.N. 0366.56

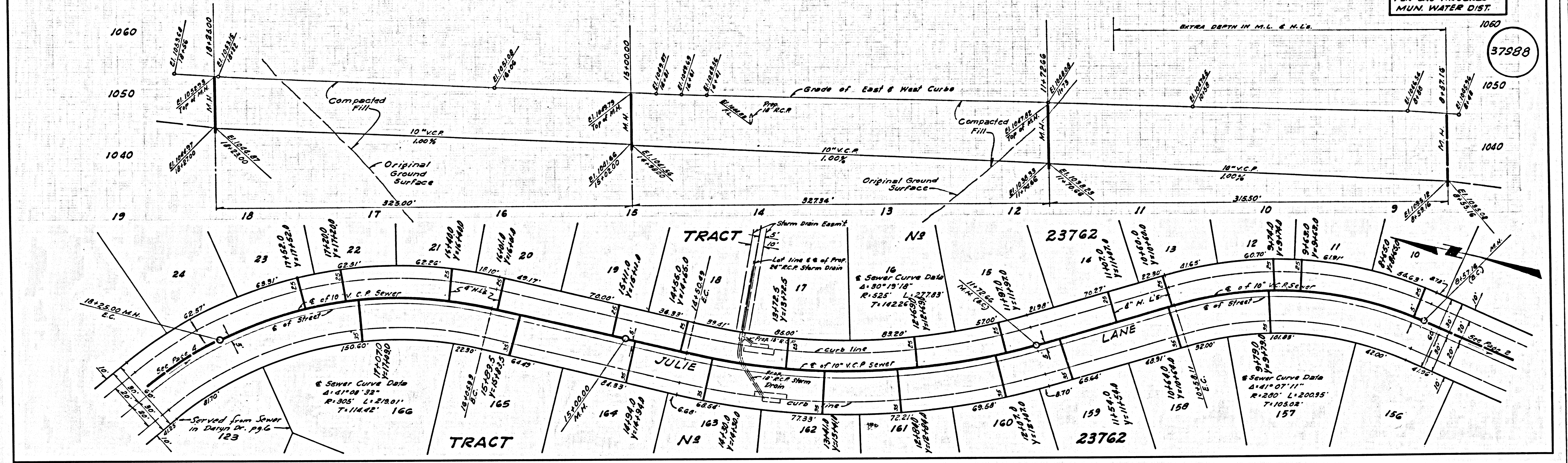


**P. C. 7494 PAGE 2
 DOUBLE SCALE
 CONNECTION CHARGES
 PER L.A.S. VIRGENES
 MUN. WATER DIST.**

37987

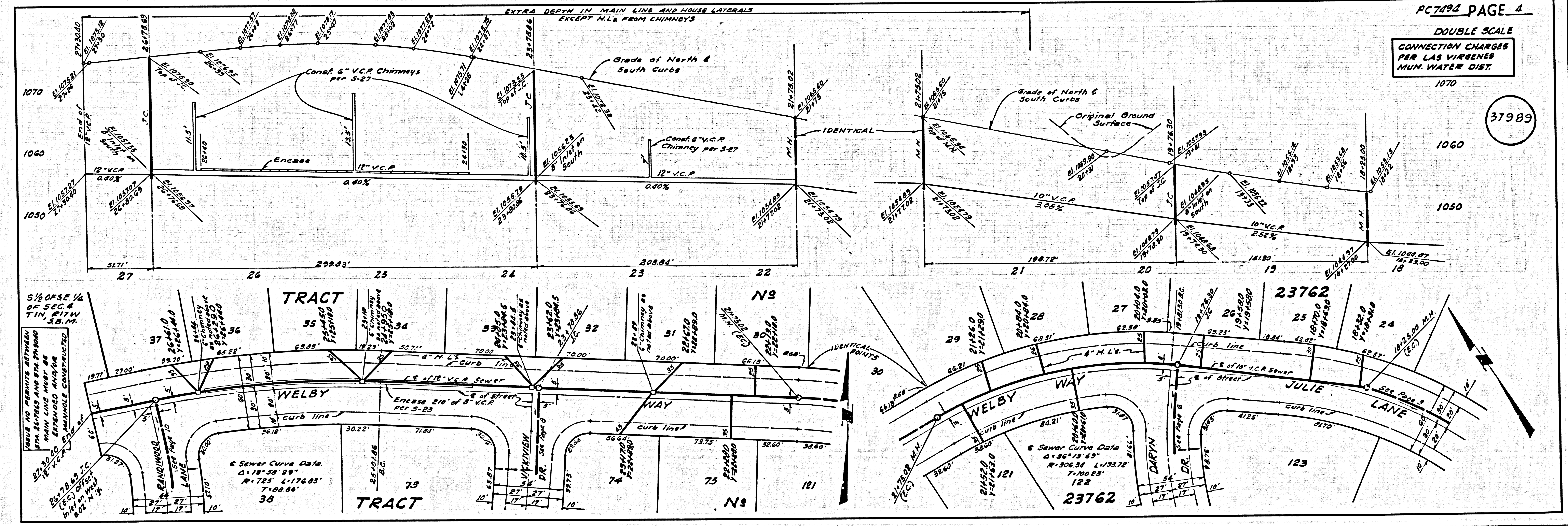
CONNECTION CHARGES
PER LAS VIRGENES
MUN. WATER DIST.

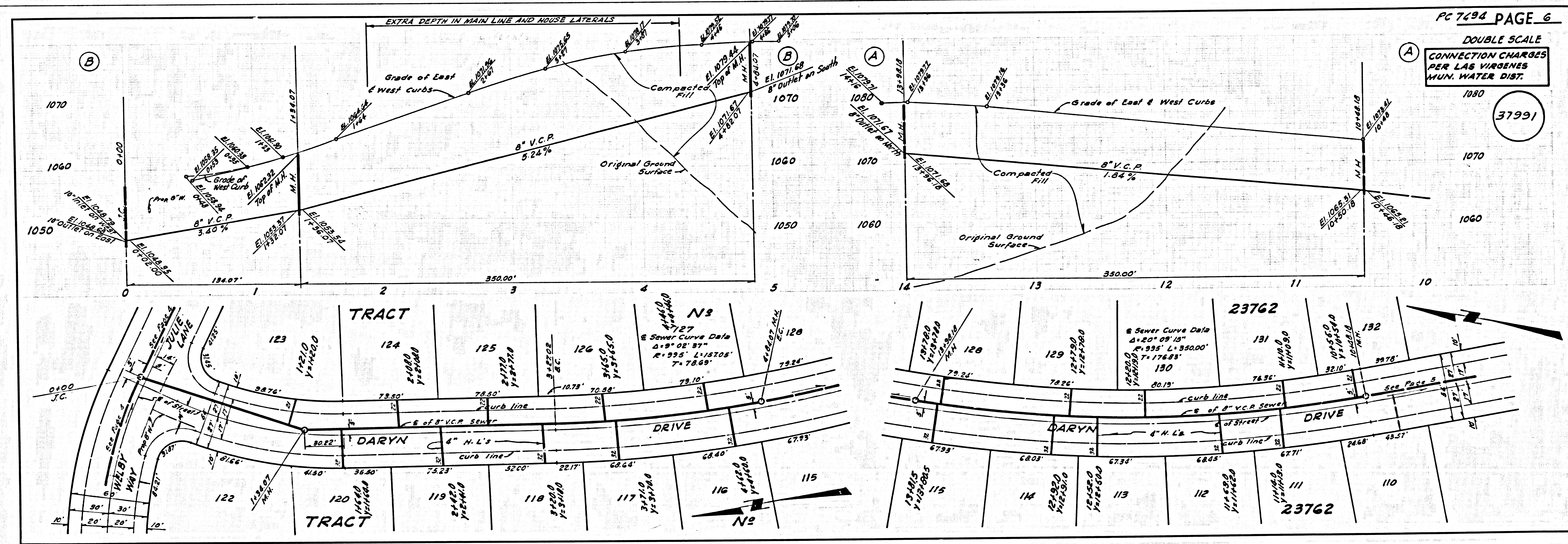
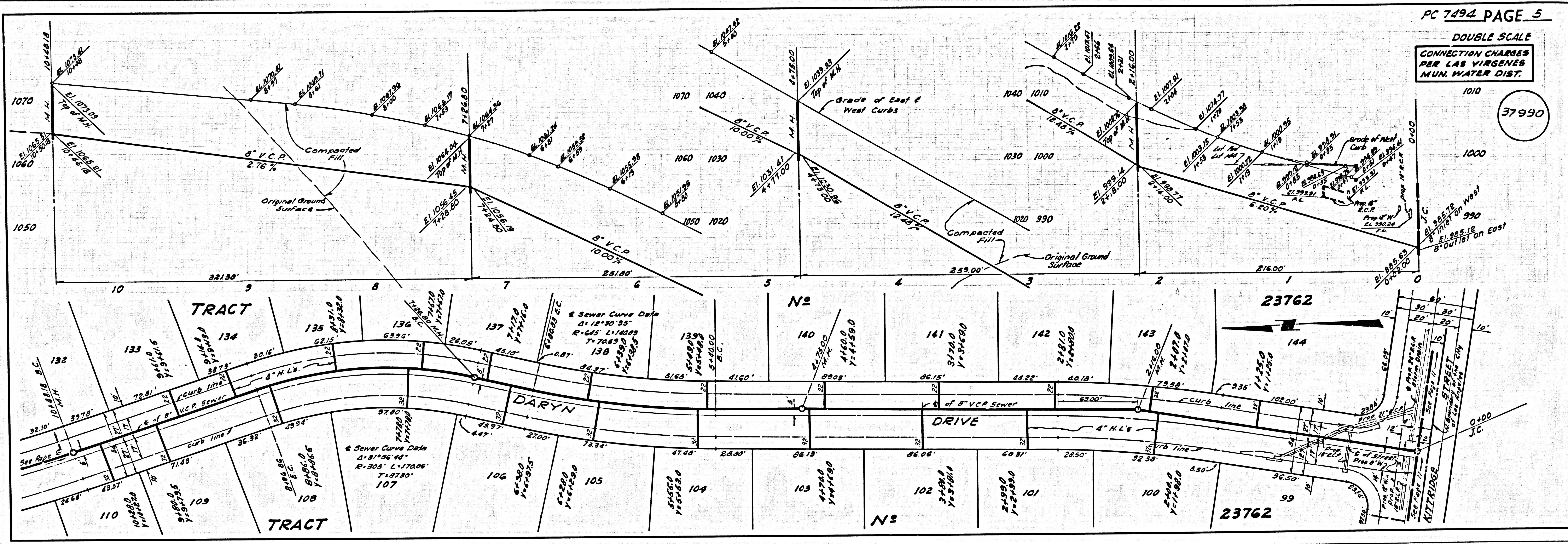
37988

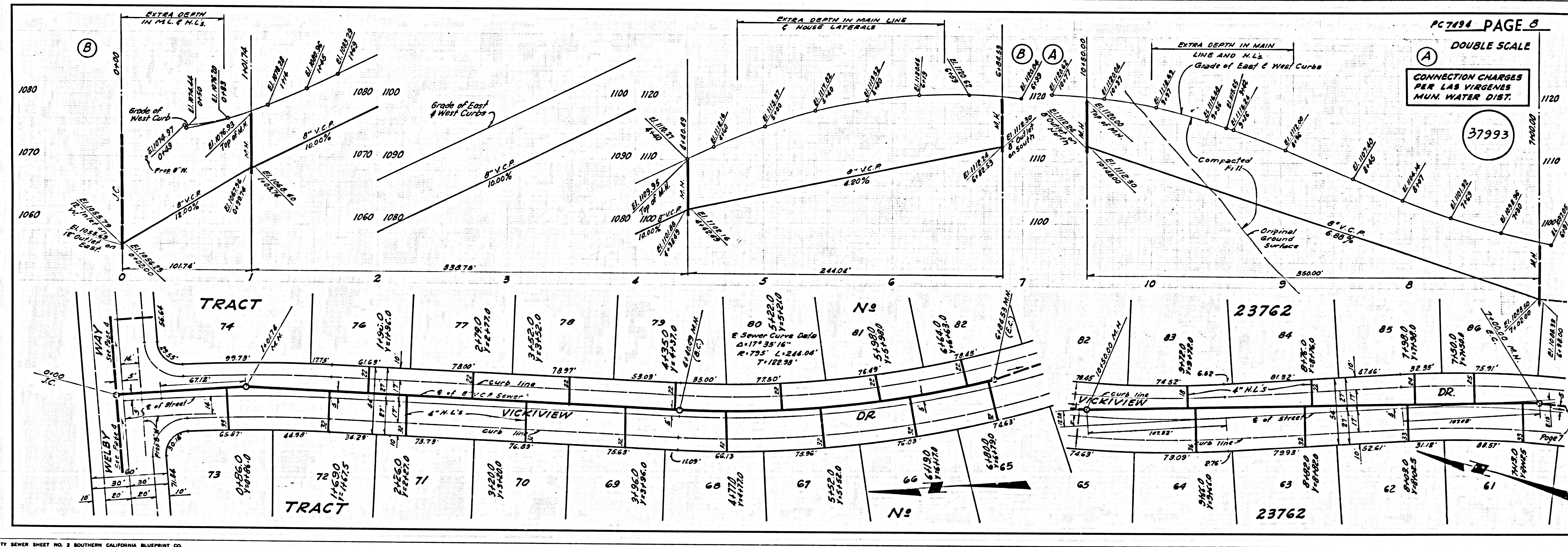
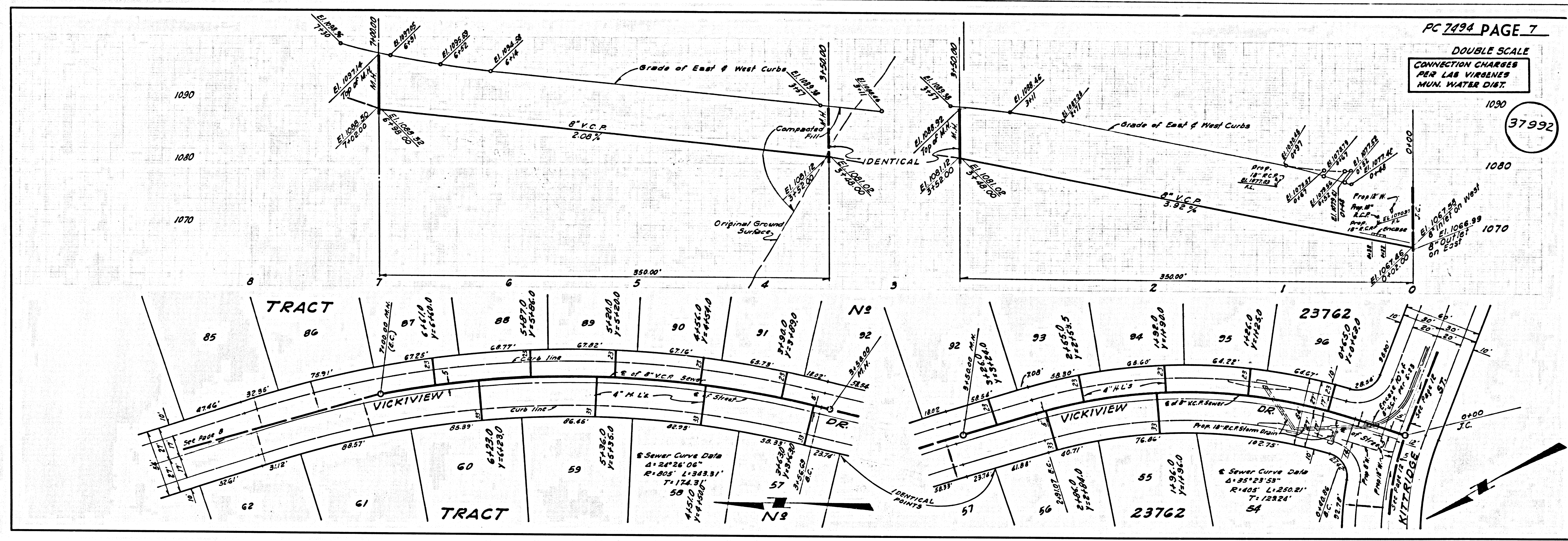


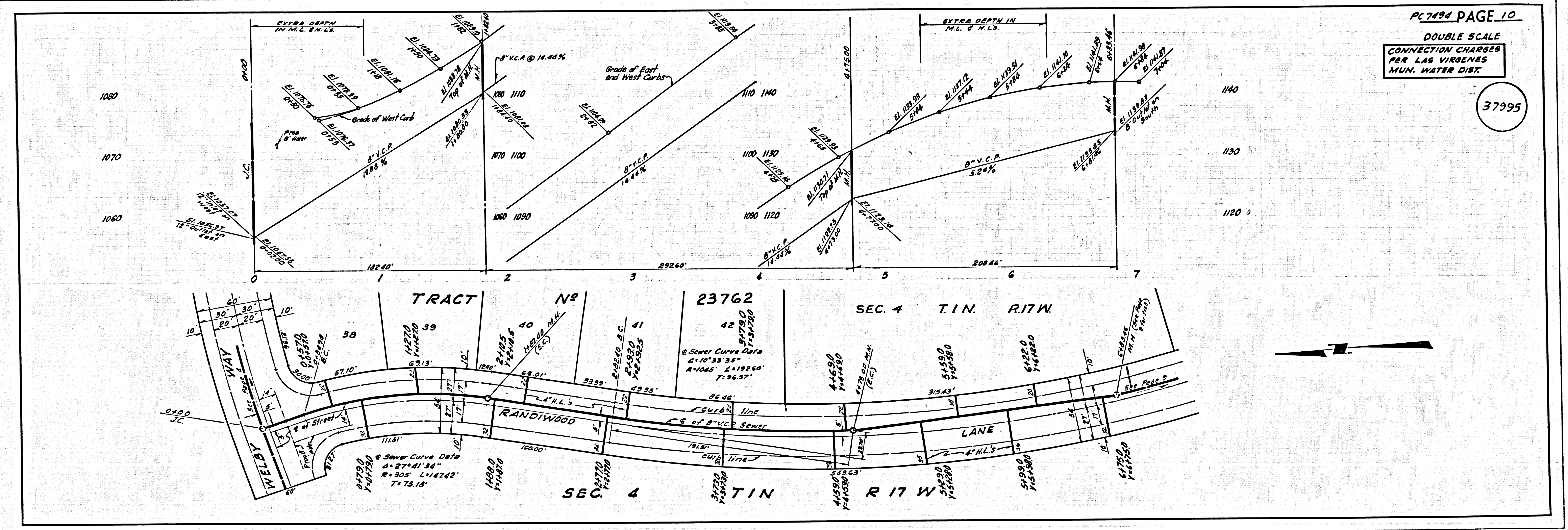
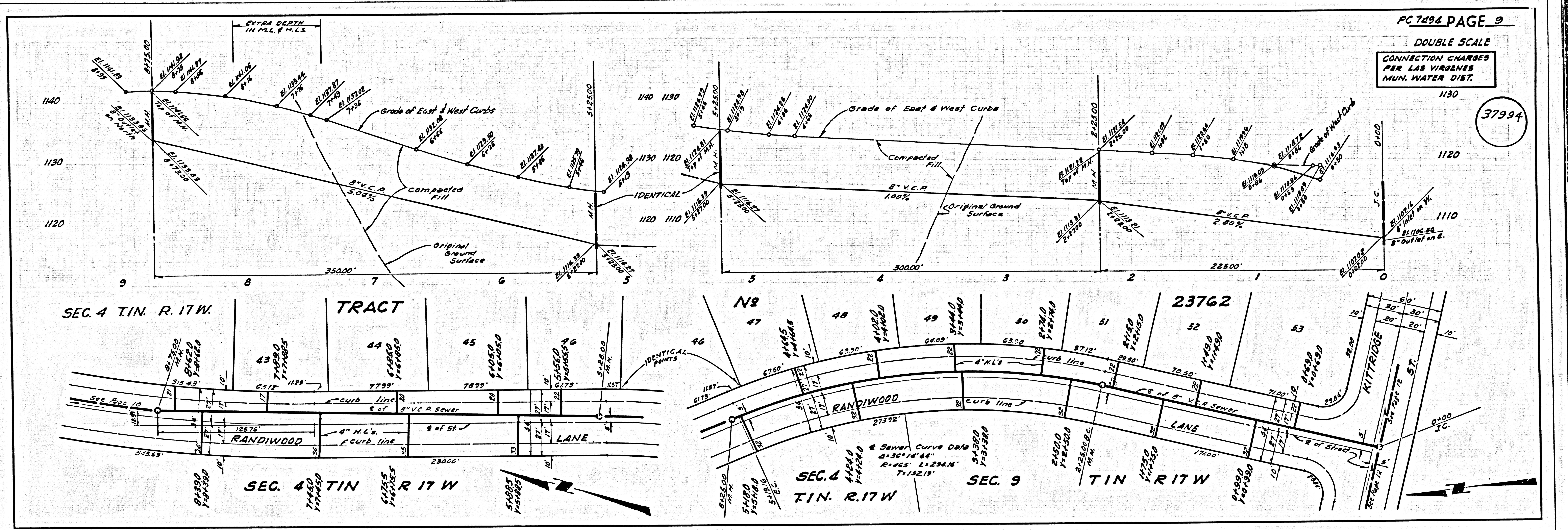
CONNECTION CHARGES
PER LAS VIRGENES
MUN. WATER DIST.

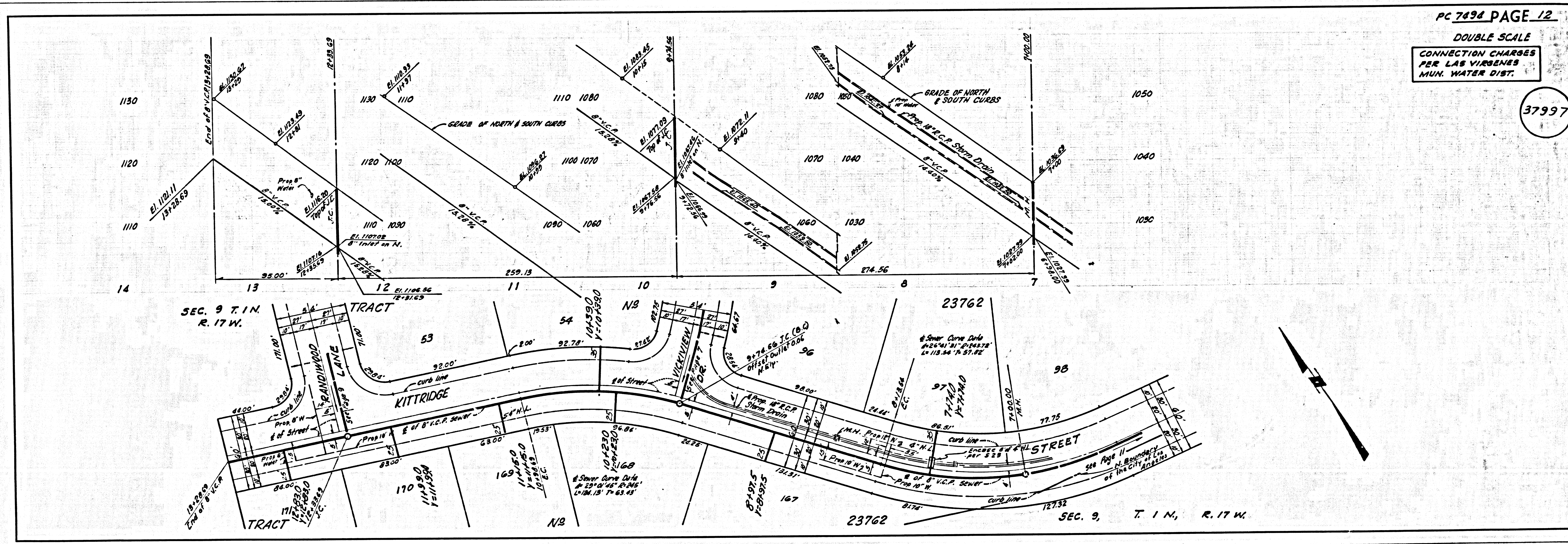
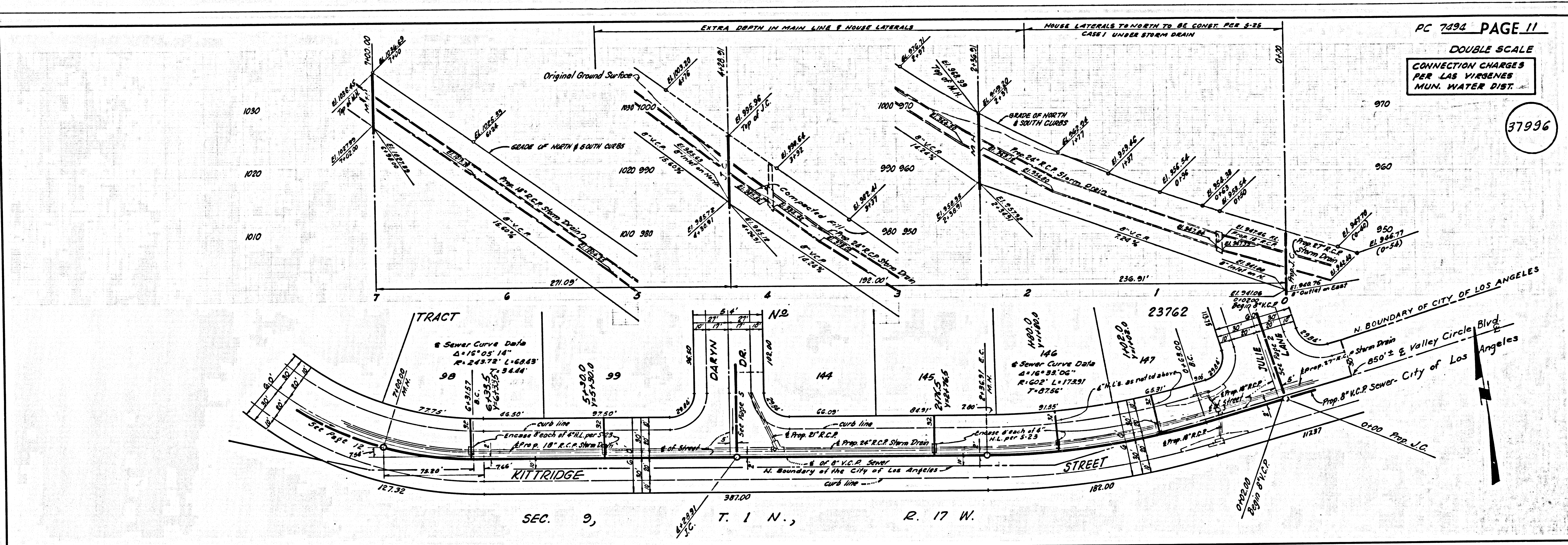
37989











B.M. ELEV. 933.570
 L.A.C.E.R. 26170 Pt. 30 Standard Township
 Monument 3-C-21 (1932) & of Vanowen
 St. 758' East of the West City Boundary
 of Los Angeles 1950 Adj.
 QUAD. 19

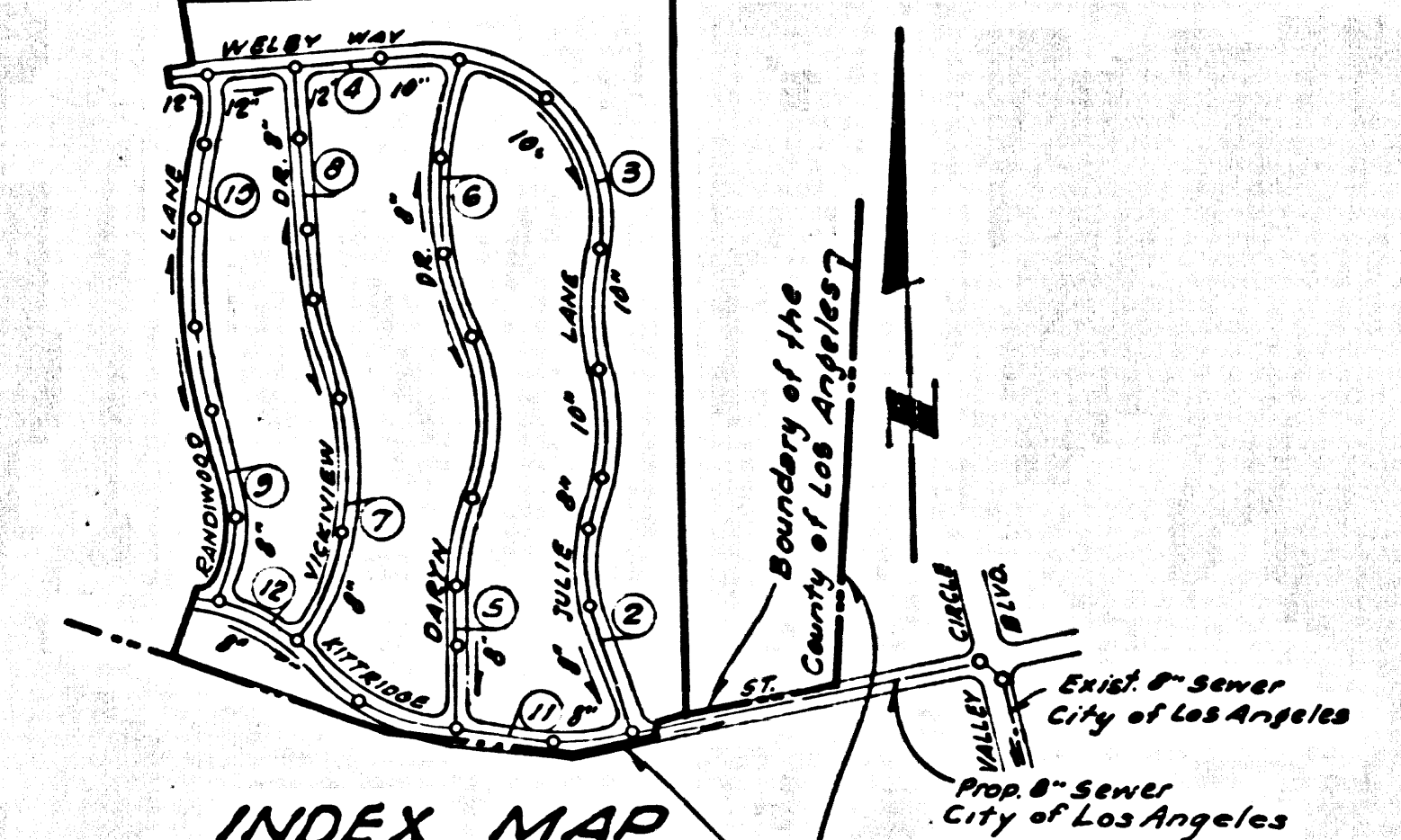
REVISION 3-10-66
 All pages Delete 4 lots on Randwood Lane and
 renumber lots from 42 on
 Page 3 Change 8" V.C.P. to 10" V.C.P. between
 Sta. 14+00.00 & 14+25.00
 Page 4 a) Change 8" V.C.P. to 10" V.C.P. between
 Sta. 14+25.00 & 21+75.02
 b) Change 8" V.C.P. to 12" V.C.P. between
 Sta. 21+75.02 & 27+30.00
 Pages 6, 8, 10 Change inlet elevs. & grades on lower reach
 to agree with new pipe size.

Approved *Edward J. Valachi*
 OFFICE OF COUNTY ENGINEER
 Approved *Richard E. King*
 ASSISTANT SANITATION ENGINEER
 LAS VIRGENES MUNICIPAL
 WATER DISTRICT
 Approved *Richard E. Campbell*
 REG. C.E. NO. 14287

REVISION 12-31-65
 PAGE 3 - CHANGE 8" V.C.P. TO 10"
 V.C.P. BETWEEN STA'S
 8+57.16 AND 15+00.00
 APPROVED *Edward J. Valachi*
 OFFICE OF COUNTY ENGINEER

NO CONSTRUCTION TO BE ALLOWED
 ON PAGE 2 (STA. 0+00 TO 0+20) AND ON
 PAGE 11 (STA. 0+00 TO 4+50) UNTIL PLANS
 ARE APPROVED BY THE CITY OF LOS
 ANGELES.

ALLOW NO CONNECTIONS UNTIL
 OUTLET SEWERS ARE CONSTRUCTED



INDEX MAP
 TRACT No. 23762
 P.C. 7494
 Scale: 1" = 400'
 Note: Numbers in circles indicate
 Page Number.

CITY OF LOS ANGELES
 SUBMITTED *April 5, 1966*
 BY *Richard E. King*
 DIVISION OF DISTRICT ENGINEER
 APPROVED *Manuel J. ...* 1966
 CITY ENGINEER

DOUBLE SCALE
 CALABASAS BLDG. DIST. NO. 91

PROFILE, ALIGNMENT AND GRADE OF
 SANITARY SEWERS PAGE 1
 TO BE CONSTRUCTED IN

TRACT No. 23762
 PRIVATE CONTRACT NO. 7494

W.S. 60
 6 SHEETS, 12 PAGES
 SCALE: HORIZ. 1" = 40' VERT. 1" = 4'
 NOVEMBER, 1965
 PREPARED IN THE OFFICES OF
 MCINTIRE & QUIROS INC.
 REG. C.E. NO. 14287

- NOTES
- PROVIDE STAKES ON THE PROPERTY LINE OR PROPERTY LINES PRODUCED AT RIGHT ANGLES TO THE SEWER LINE AT THE CENTER LINE OF EACH MANHOLE.
 - NO REPRESENTATIVE OF THE COUNTY ENGINEER WILL SURVEY OR LAY OUT ANY PORTION OF THE WORK.
 - THE PRIVATE ENGINEER SHALL FURNISH THE COUNTY ENGINEER WITH GRADE SHEETS AND STATIONING FOR ALL HOUSE LATERALS AND "T" BRANCHES AND SHALL PROVIDE STAKES FOR THEM AT THEIR PROPER LOCATIONS WITH STATIONING PLAINLY MARKED. ALL HOUSE LATERALS SHALL BE CONSTRUCTED IN A STRAIGHT ALIGNMENT AT RIGHT ANGLES FROM THE MAIN LINE SEWER EXCEPT AS SHOWN ON THE PLANS. HOUSE LATERALS FROM CHIMNEYS SHALL NOT HAVE AN ANGLE OF LESS THAN 45° WITH THE MAIN LINE SEWER. ANY CHANGE IN ALIGNMENT SHALL BE REQUESTED IN WRITING BY THE PRIVATE ENGINEER.
 - THE PRIVATE ENGINEER SHALL FURNISH THE HOUSE LATERAL DEPTH AT THE PROPERTY LINE BELOW THE TOP OF CURB ELEVATION FOR EACH HOUSE LATERAL ON THE GRADE SHEET.
 - NO REVISIONS SHALL BE MADE IN THESE PLANS WITHOUT THE APPROVAL OF THE COUNTY ENGINEER.
 - THE CONTRACTOR SHALL NOTIFY THE CONSTRUCTION DIVISION BY TELEPHONE, MADISON 9-040, EXT. 8153, AT LEAST TWENTY-FOUR HOURS BEFORE STARTING ANY WORK UNDER THIS CONTRACT.
 - MANHOLES SHALL BE SIX INCH SEWER STRUCTURES PER S.3. PRECAST CONCRETE MANHOLES PER S-3 OR S-4 MAY BE USED AS AN ALTERNATE IN LOCATIONS APPROVED BY THE COUNTY ENGINEER.
 - USE STANDARD MANHOLE FRAMES AND COVERS, S-15, EXCEPT AS NOTED.
 - MANHOLE TOPS IN UNIMPROVED RIGHTS-OF-WAY TO BE SIX INCHES ABOVE FINISHED GRADE.
 - USE EXTRA STRENGTH PIPE. ALL PIPE IS STANDARD DEPTH EXCEPT AS NOTED.
 - USE MECHANICAL COMPRESSION JOINTS FOR ALL V.C.P. JOINTS PER SPEC. S.E.C. 36, 48 & 49.
 - IF A POWER POLE IS WITHIN THREE FEET OF THE SEWER, THE SEWER SHALL BE ENCASED, PER S-28, TWO FEET ON EACH SIDE FROM THE POINT OF INTERFERENCE.
 - IF DURING THE COURSE OF CONSTRUCTION IT IS DETERMINED THAT THERE IS LESS THAN FOUR FEET OF COVER OVER THE TOP OF A MAIN LINE OR HOUSE LATERAL V.C.P. SEWER WHICH IS NOT INDICATED ON THE PLANS, THE PIPE SHALL BE ENCASED PER S-23, UNLESS OTHERWISE APPROVED BY THE COUNTY ENGINEER.
 - HOUSE LATERALS TO BE CONSTRUCTED WITH INVERTS AT PROPERTY LINE 6 FEET BELOW CURB GRADE EXCEPT AS NOTED.
 - RESURFACE ALL TRENCHES WITHIN PAVED AREAS TO MEET L.A. COUNTY ROAD DEPT. OR CALIFORNIA STATE HIGHWAY REQUIREMENTS IN ACCORDANCE WITH PERMITS.
 - FOR ALLOWABLE LEAKAGE TEST USE FORMULA NO. 2, SPEC. S.E.C. 54.
 - ALL STATE AND LOCAL TRENCH SAFETY ORDERS WILL BE STRICTLY ENFORCED.
 - CONSTRUCTION IN FILLED AREAS:
 - ANY ACCEPTABLE DETERMINATION OF COMPACTION TESTS RESULTS SHALL BE SUBMITTED TO THE CONSTRUCTION DIVISION. COMPACTION TESTS ARE TO BE MADE IN ACCORDANCE WITH A.S.T.M. STANDARD METHOD OF TEST D-690-48T.
 - NO CONSTRUCTION IS PERMITTED IN THE FILLED AREAS WHERE THE RELATIVE DENSITY OF COMPACTION IS LESS THAN 90%.
 - IF THE RELATIVE DENSITY OF COMPACTION IS LESS THAN 90% ALL MAIN LINE AND HOUSE LATERALS SHALL BE ENCASED PER S-23 OR HAVE A SPECIAL BASE COURSE PER S-21. CASE III SPECIAL MANHOLE BASES PER S-18 ARE REQUIRED.
 - IF THE RELATIVE DENSITY OF COMPACTION IS 90% OR GREATER THE SPECIAL PROVISIONS IN C ARE NOT REQUIRED.

GRADES TO WHICH THE IMPROVEMENT IS TO BE CONSTRUCTED ARE SHOWN ON PLANS AND PROFILES. GRADE POINTS FOR TOP OF CURBS, CENTER LINE OF STREETS, OR CENTER LINE OF ALLEYS ARE SHOWN BY CIRCLES ON PROFILES. AT ALL POINTS BETWEEN DESIGNATED POINTS THE GRADE SHALL BE ESTABLISHED SO AS TO CONFORM TO A STRAIGHT LINE DRAWN BETWEEN SAID DESIGNATED POINTS. ELEVATIONS ARE IN FEET ABOVE U.S.C. & G.S. SEA LEVEL DATUM OF 1929.

THIS DRAWING AND THE DATA HEREON ARE HEREBY MADE A PART OF THE IMPROVEMENTS. THE CONTRACTOR SHALL BE RESPONSIBLE FOR THE ACCURACY OF THE COUNTY ENGINEER AND SHALL BE PROTECTED ONLY IN THE PRESENCE OF THE COUNTY ENGINEER.

CONTRACTOR SHALL BE RESPONSIBLE FOR OBTAINING A PERMIT TO EXCAVATE IN COUNTY STREETS FROM THE L.A. COUNTY ENGINEER. BEFORE WORK CAN BE STARTED, THE CONTRACTOR MUST OBTAIN A PERMIT TO EXCAVATE IN COUNTY STREETS FROM THE L.A. COUNTY ENGINEER, DISTRICT OFFICE NO. 10, 1200 SOUTH SPRING STREET, LOS ANGELES, CALIFORNIA. REGIONAL OFFICE, SUPERVISOR TO COVER THE COST OF THE SECOND STREET OR PALM STREET (SANTA ANITA AVENUE) PROJECT.

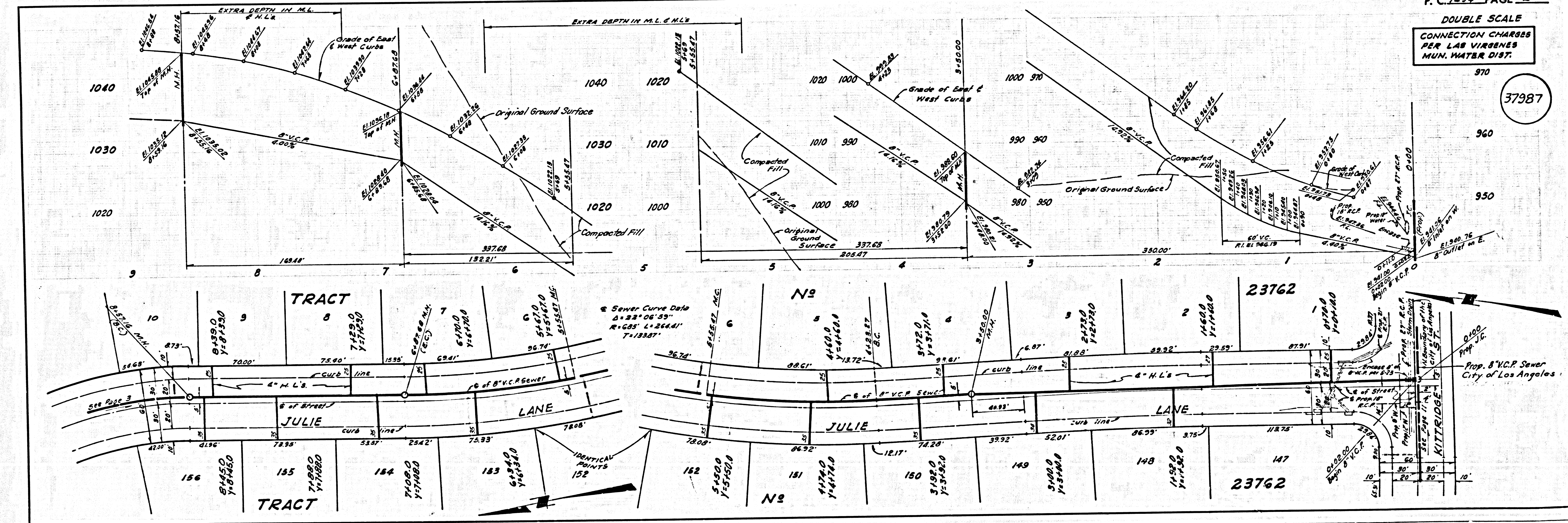
CONSTRUCTION INSPECTION AND RECORD PLANS DOES NOT CONSTITUTE A REPRESENTATION AS TO THE ACCURACY OF THE PROJECT. APPROVAL OF THIS PLAN BY THE COUNTY OF LOS ANGELES DOES NOT CONSTITUTE A REPRESENTATION AS TO THE ACCURACY OF THE LOCATION OF OR THE EXISTENCE OR NON-EXISTENCE OF ANY UNDERGROUND UTILITY PIPE, OR STRUCTURE WITHIN THE LIMITS OF THE PROJECT. THIS NOTE APPLIES TO ALL PROJECTS OF THE COUNTY OF LOS ANGELES, DIVISION OF HIGHWAY.

IF WORK IS TO BE DONE IN A STATE HIGHWAY, A PERMIT MUST BE OBTAINED FROM THE STATE OF CALIFORNIA, DIVISION OF HIGHWAY, 120 SOUTH SPRING STREET, LOS ANGELES, CALIFORNIA.

COUNTY OF LOS ANGELES, CALIFORNIA
 JOHN A. LAMBIE, COUNTY ENGINEER
 APPROVED BY *Richard E. King*
 ASSISTANT SANITATION ENGINEER
 SUBMITTED BY *Richard E. King*
 REGIONAL ENGINEER
 CHECKED BY *Edward J. Valachi* 12-23-65
 REG. C.E. NO. 14287

COLLECT CHARGES
 AS INDICATED
Richard E. King 12/23/65

J.N. 0366.56



P.C. 7494 PAGE 2
 DOUBLE SCALE
 CONNECTION CHARGES
 PER LAS VIRGENES
 MUN. WATER DIST.
 37987

